

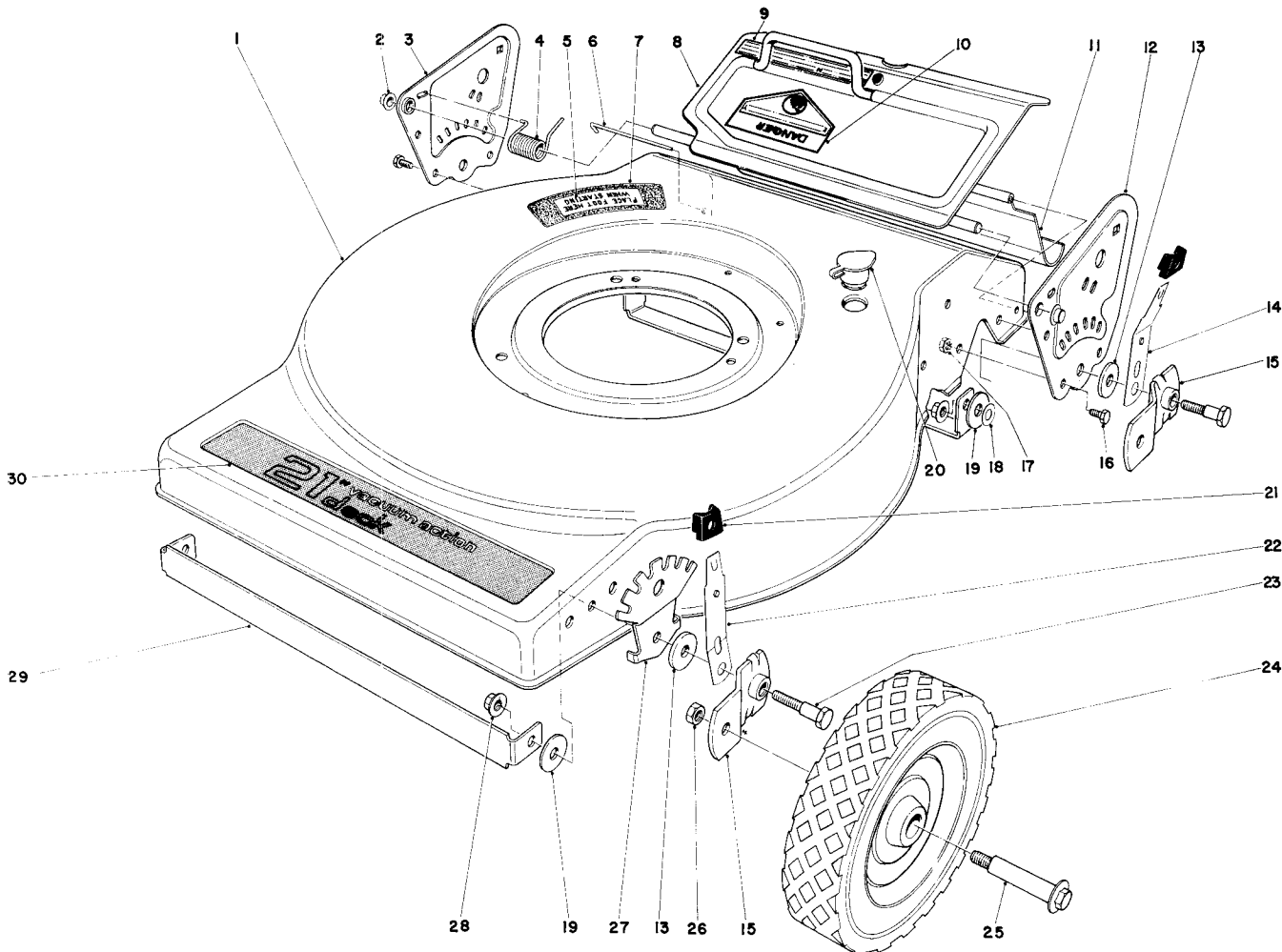
1980



21" H.P. MODEL NO. 16880-0000001 & UP
 21" S.P. MODEL NO. 16890-0000001 & UP

PARTS CATALOG

21" H.P. & S.P. TORO STANDARD
 FINGERTIP START REAR BAGGER

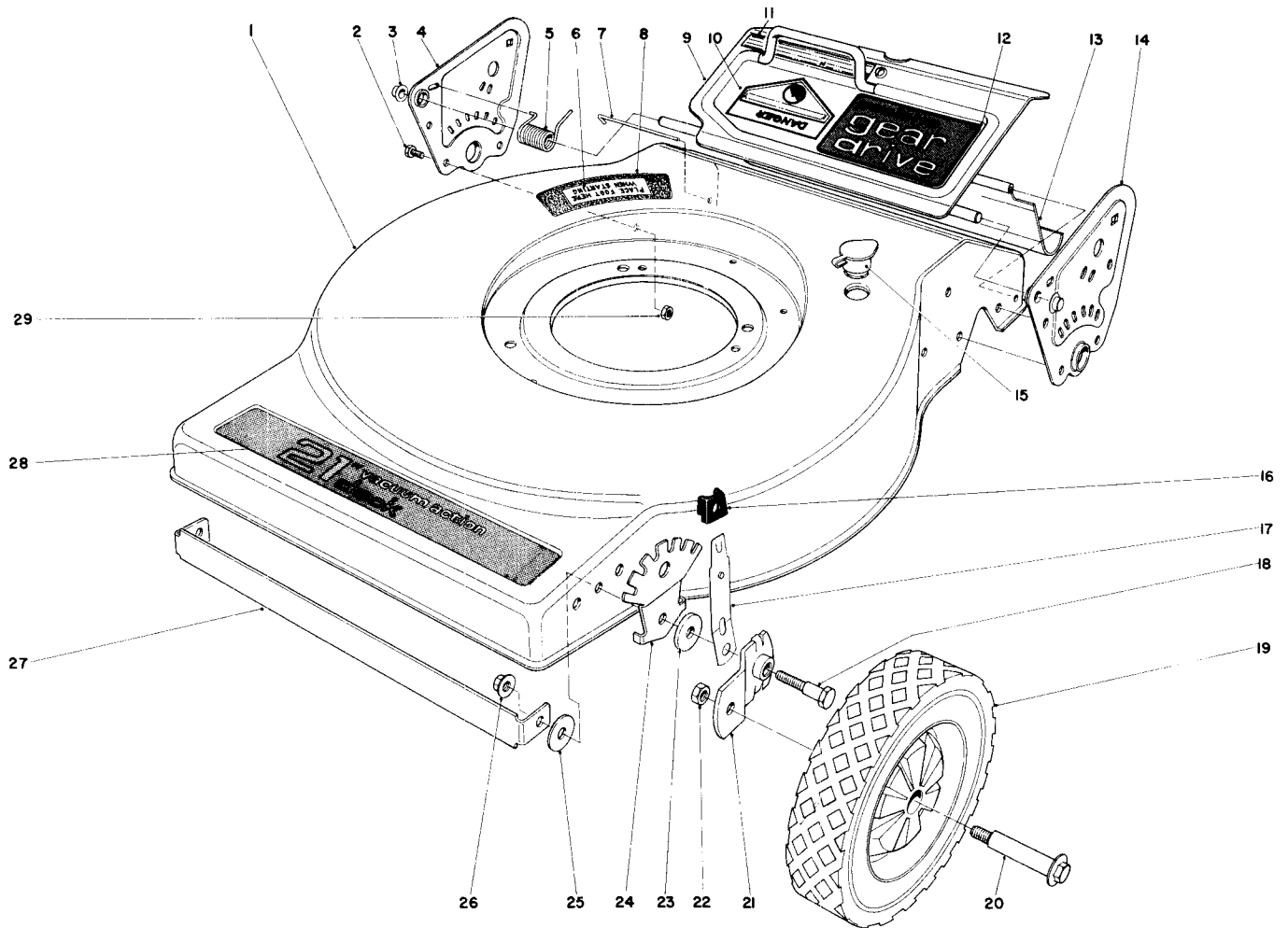


MOWER HOUSING (MODEL NO. 16880)

Ref. No.	Part No.	Description	No. Used
1	8-7799	Housing	1
2	3290-320	Retainer Push On	2
3	37-4380	Side Plate R. H.	1
4	37-9420	Torsion Spring	1
5	36-2820	Decal – Step Pad	1
6	33-3204	Shield Rod	1
7	37-0030	Step Pad	1
8	38-0700	Door Handle	1
9	39-9090	Decal – Door Caution	1
10	39-5770	Decal – Danger	1
11	36-6330	Rear Safety Shield	1
12	37-4390	Side Plate L. H.	1
13	33-0390	Pivot Washer	4
14	37-4830	Spring Arm	2
15	24-7710	Pivot Arm "A"	2
*	23-9120	Pivot Arm "B"	2

Ref. No.	Part No.	Description	No. Used
16	321-2	Capscrew	6
17	32152-4	Locknut	6
18	3256-23	Washer	2
19	5-1350	Washer	4
20	6-4500	Washout Plug	1
21	25-7740	Knob Arm	4
22	25-8000	Spring Arm	2
23	36-6670	Pivot Screw	4
24	12-2620	Wheel & Tire Assembly	4
25	3-2652	Wheel Bolt	4
26	32146-6	Locknut	4
27	36-6780	Quadrant	2
28	32128-30	Locknut Flange	4
29	36-6830	Support Deck	2
30	39-9060	Decal – Deck	1

*Not Illustrated

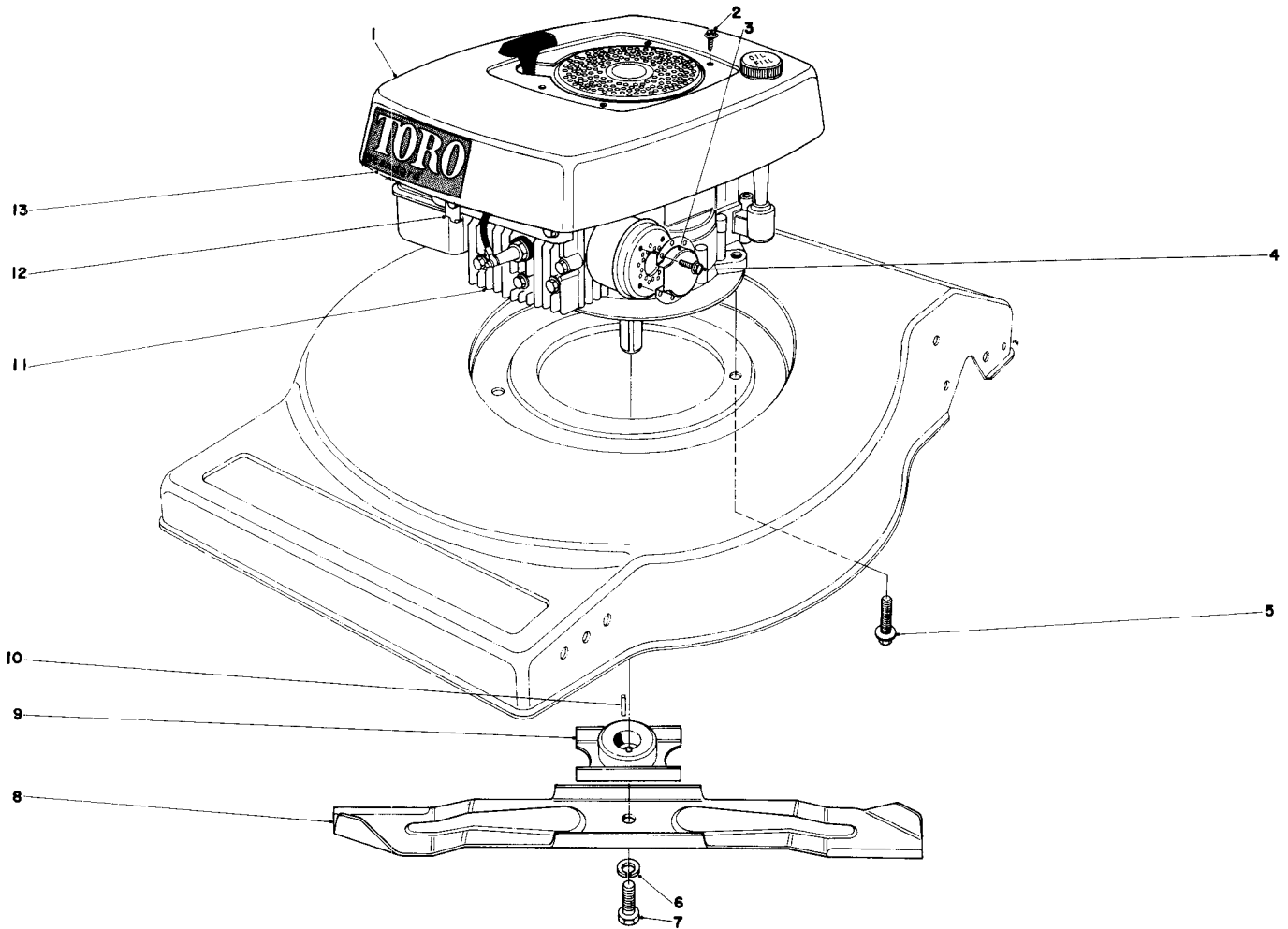


MOWER HOUSING (MODEL NO. 16890)

Ref. No.	Part No.	Description	No. Used
1	8-7789	Housing	1
2	321-2	Capscrew	6
3	3290-320	Retainer Push On	2
4	37-1450	Side Plate R. H.	1
5	37-9420	Torsion Spring	1
6	36-2820	Decal — Step Pad	1
7	33-3204	Rod Shield	1
8	37-0030	Step Pad	1
9	38-0700	Rear Door	1
10	39-5770	Decal — Danger	1
11	39-9090	Decal — Caution	1
12	39-9100	Decal — Door	1
13	36-6330	Rear Safety Shield	1
14	37-1440	Side Plate L. H.	1
15	6-4500	Washout Plug	1
16	25-7740	Knob Arm	2

Ref. No.	Part No.	Description	No. Used
17	25-8000	Spring Arm	2
18	36-6670	Pivot Screw	2
19	27-6200	Wheel & Tire Assembly	2
20	27-6230	Wheel Bolt	2
21	24-7710	Pivot Arm "A"	1
*	23-9120	Pivot Arm "B"	1
22	32146-6	Locknut	2
23	33-0390	Pivot Washer	2
24	36-6780	Quadrant	2
25	5-1350	Washer	2
26	32128-30	Flange Locknut	2
27	36-6830	Support Deck	1
28	39-9060	Decal — Deck	1
29	32152-4	Locknut	6
*	8-6949	Loose Parts Bag	1

*Not Illustrated

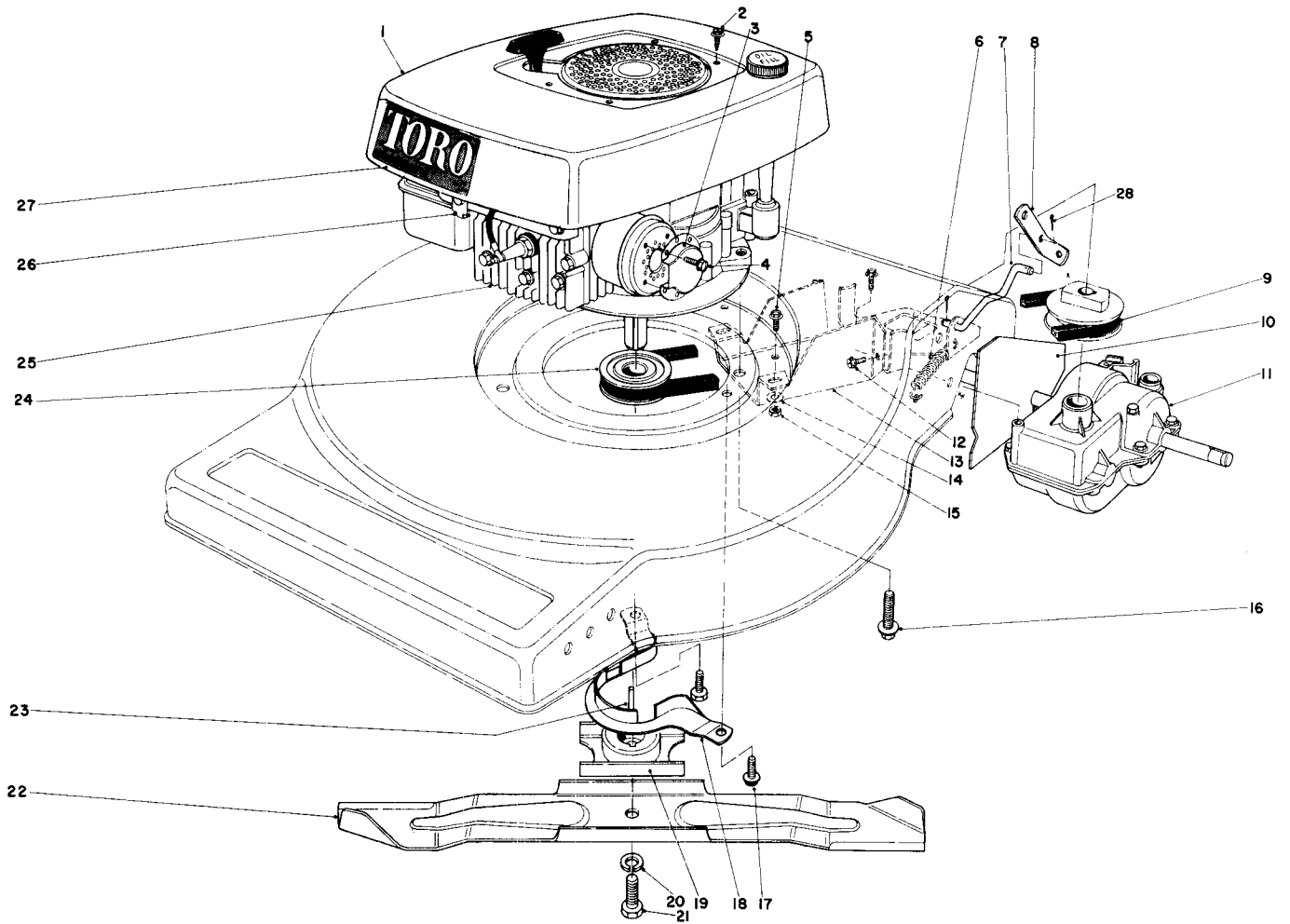


ENGINE ASSEMBLY (MODEL NO. 16880)

Ref. No.	Part No.	Description	No. Used
1	28-6772	Shroud	1
2	32104-94	Screw	4
3	2210-184	Muffler Deflector	1
4	2210-173	Screw	2
5	11-0590	Capscrew Hex Hd. Thd. Forming	3
6	3253-22	Lockwasher	1
7	3-5246	Screw Special	1

Ref. No.	Part No.	Description	No. Used
8	26-0880	Blade	1
9	20-2750	Blade Retainer	1
10	7-0036	Square Key	1
11	221-599	Engine	1
12	38-7580	Control Bracket	1
13	39-9050	Decal – Shroud	1
*	8-6989	Loose Parts Bag	1

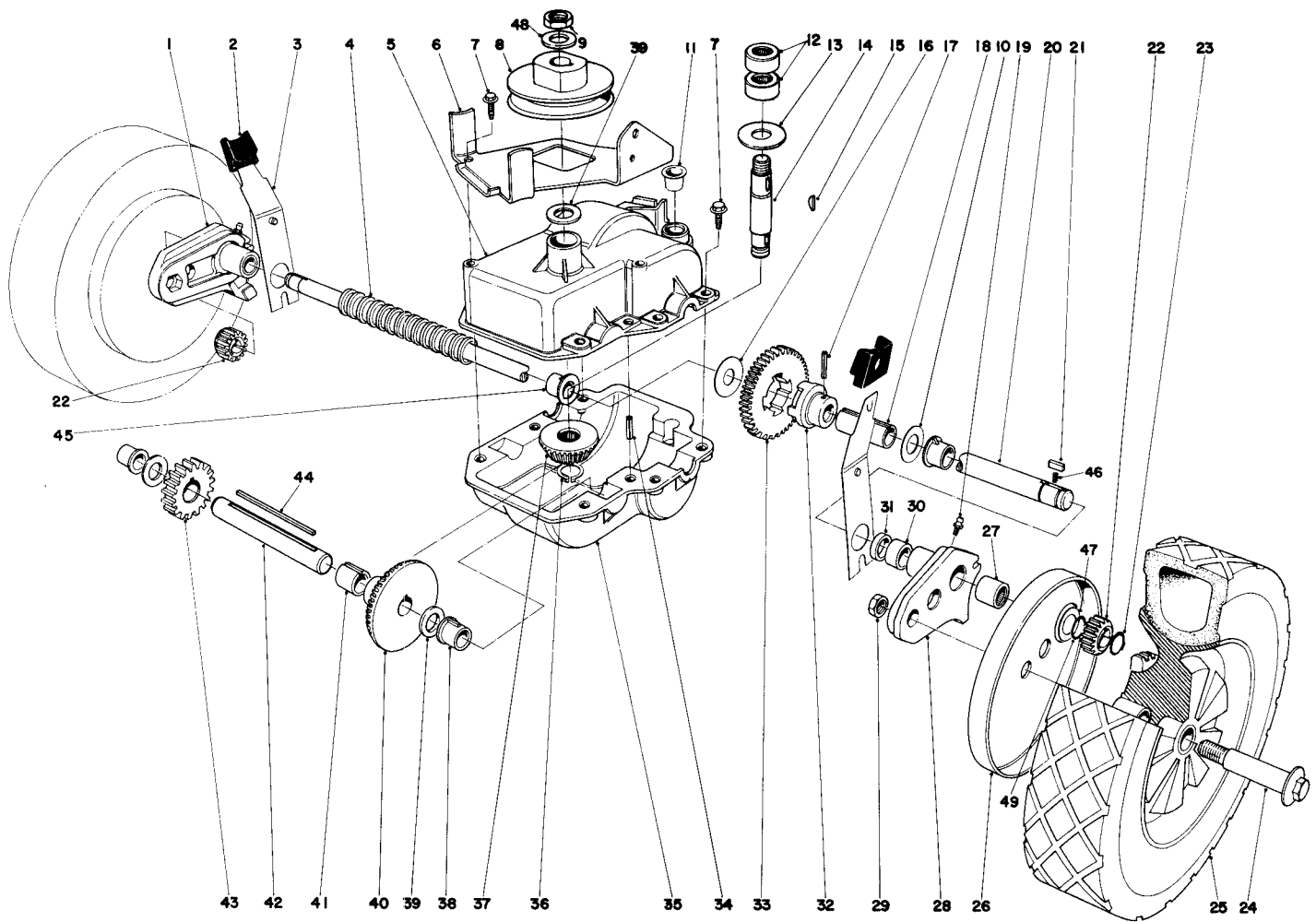
*Not Illustrated



ENGINE ASSEMBLY (MODEL NO. 16890)

Ref. No.	Part No.	Description	No. Used
1	28-6772	Shroud	1
2	32104-94	Screw	4
3	2210-184	Muffler Deflector	1
4	2210-173	Screw	2
5	3290-321	Hex Hd. Screw	2
6	23-7750	Idler Spring	1
7	38-9160	Link Clutch	1
8	38-9140	Bracket Clutch Pivot	1
9	38-0480	V-Belt	1
10	38-7740	Grass Shield	1
11	8-7819	Gear Case Assembly Complete	1
12	32104-76	Self Tapping Screw	2
13	38-0510	Belt Cover	1
14	3256-14	Washer	2

Ref. No.	Part No.	Description	No. Used
15	32146-18	Locknut	2
16	11-0590	Capscrew Hex Hd. Thd. Forming	3
17	11-9760	Screw	2
18	39-1840	Belt Guide	1
19	20-2750	Blade Retainer	1
20	3253-22	Lockwasher	1
21	3-5246	Special Screw	1
22	26-0880	Blade	1
23	27-8590	Key Square	1
24	21-5580	Pulley Driver	1
25	221-599	Engine	1
26	38-7580	Control Bracket	1
27	39-9050	Decal - Shroud	1
28	3272-5	Cotter Pin	2

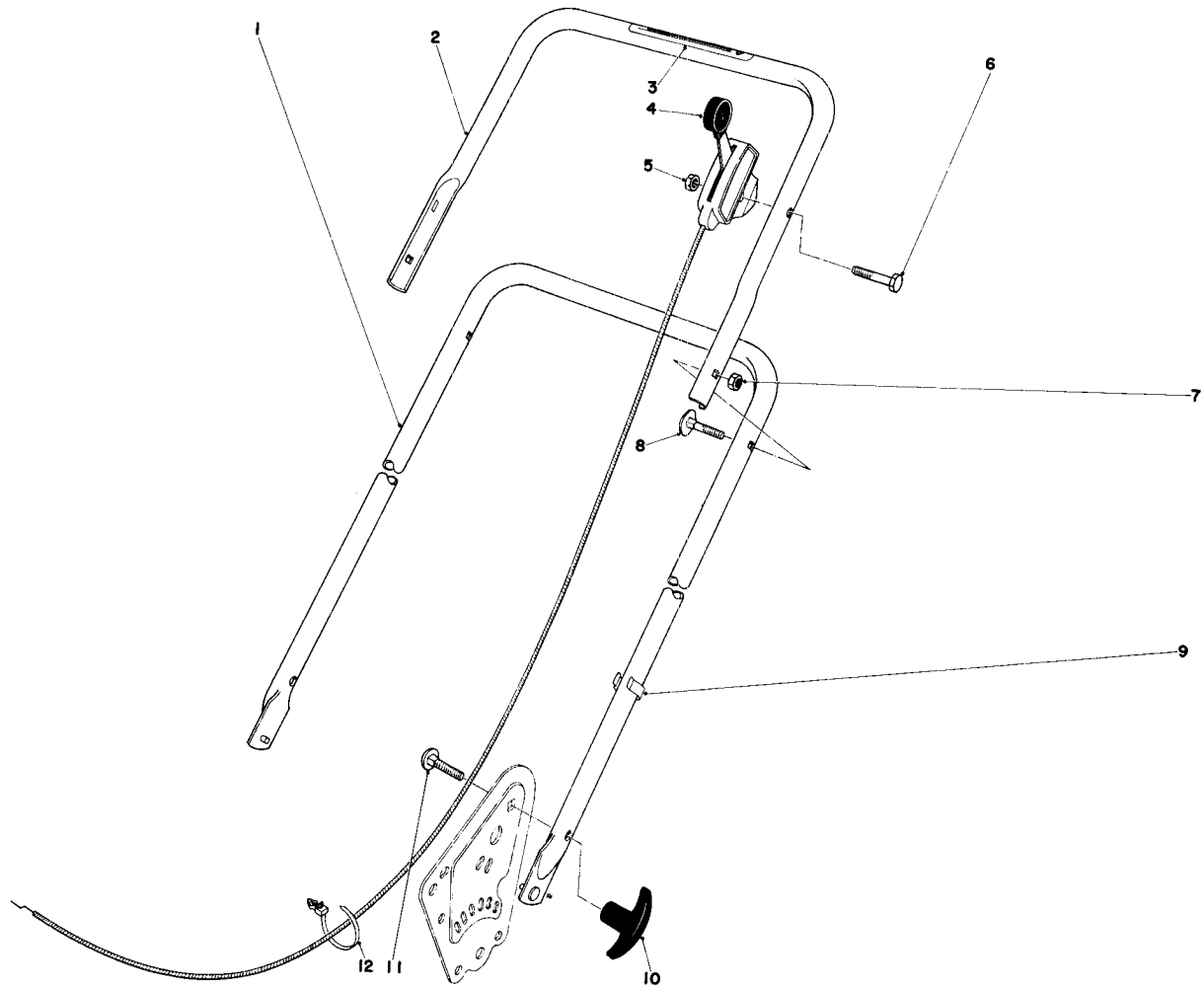


GEAR CASE ASSEMBLY (MODEL NO. 16890)

Ref. No.	Part No.	Description	No. Used
1	29-9590	Pivot Arm R.H. (Incl. Ref. #19, 27 & 30-31)	1
2	25-7740	Knob Arm	2
3	37-4820	Spring Arm	2
4	37-9281	Cover Drive Shaft	1
5	39-7280	Case Upper	1
6	37-4460	Bracket – Belt Guide	1
7	11-9760	Hex Hd. Screw Thd. Forming	8
8	39-6740	Pulley	1
9	32146-6	Locknut	1
10	36-4780	Thrust Washer	1
11	12-0510	Caplug	1
12	252-97	Bearing	2
13	256-196	Thrust Washer	1
14		Input Shaft	1
15	3257-1	Key – Woodruff	2
16	29-9690	Washer	1
17	32121-95	Coil Pin	1
18	36-9120	Spacer – Output Shaft	1
19	302-18	Grease Fitting	2
20	39-9750	Output Shaft	1
21	39-9680	Key – Rectangular	2
22	39-9160	Pinion Gear	2
23	32151-61	Retaining Ring	2
24	27-6230	Wheel Bolt	2
25	36-7790	Wheel & Tire Assembly	2
26	36-5630	Wheel Cover	2

Ref. No.	Part No.	Description	No. Used
27	252-96	Needle Bearing	2
28	29-9640	Pivot Arm L.H. (Incl. Ref. #19, 27 & 30-31)	1
29	32146-6	Locknut	2
30	256-110	Bushing	2
31	253-140	Seal	2
32	36-6280	Adapter – Drive	1
33	29-9270	Gear	1
34	32121-100	Roll Pin	1
35	29-9410	Lower Case	1
36	32151-57	Retaining Ring	1
37		Pinion Bevel	1
38	29-9350	Bushing Short Shaft	2
39	36-4790	Thrust Washer	3
40	39-6670	Gear – Bevel	1
41	37-4760	Spacer – Short Shaft	1
42	39-6680	Short Shaft	1
43	39-6630	Gear	1
44	39-7840	Key – Square	1
45	29-9310	Bushing	2
46	39-9650	Spring	2
47	252-73	Washer	4
48	3256-45	Washer	1
49	32151-11	Grip Ring	2
*	8-7819	Gear Case Assembly (Incl. Ref. #5-18, 20 & 32-45)	1
*	8-6799	Input Shaft & Pinion Assembly (Incl. Ref. #14 & 37)	1

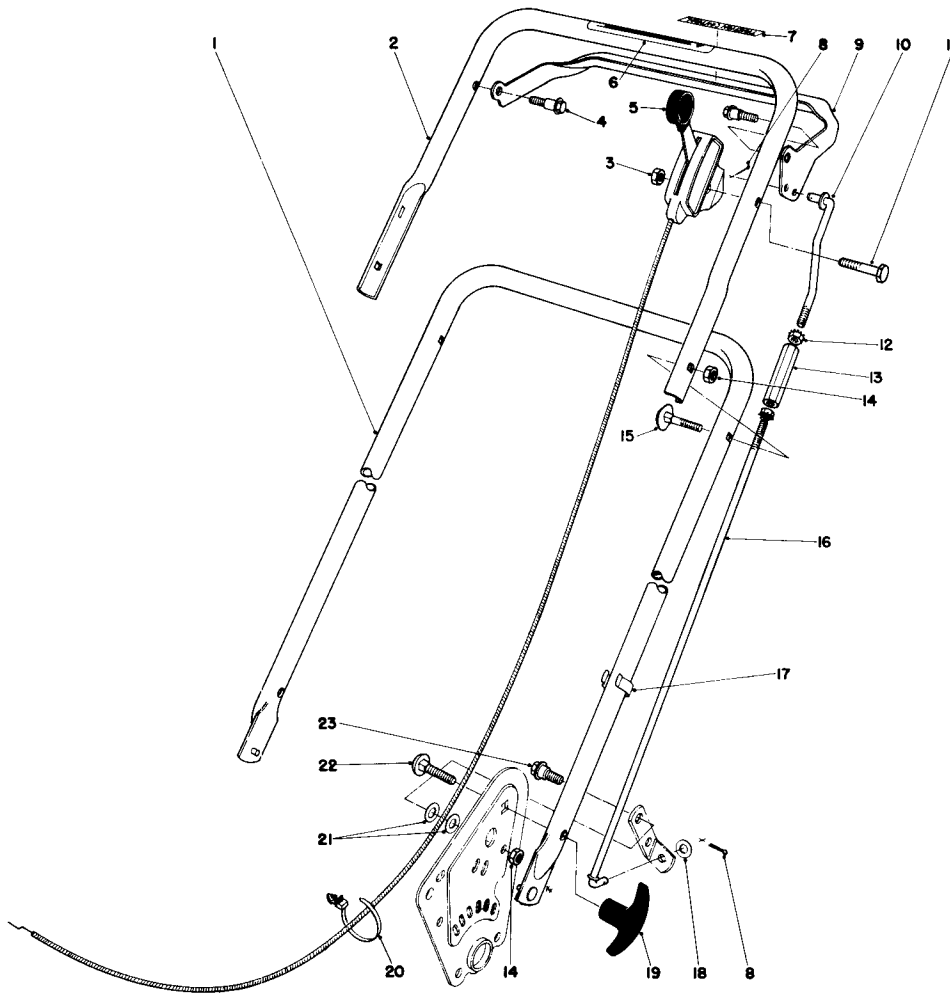
*Not Illustrated



HANDLE ASSEMBLY (MODEL NO. 16880)

Ref. No.	Part No.	Description	No. Used
1	38-0810	Lower Handle	1
2	38-0620	Upper Handle	1
3	29-6290	Decal – Danger	1
4	33-2536	Throttle Control	1
5	32146-17	Locknut	1
6	321-10	Capscrew	1

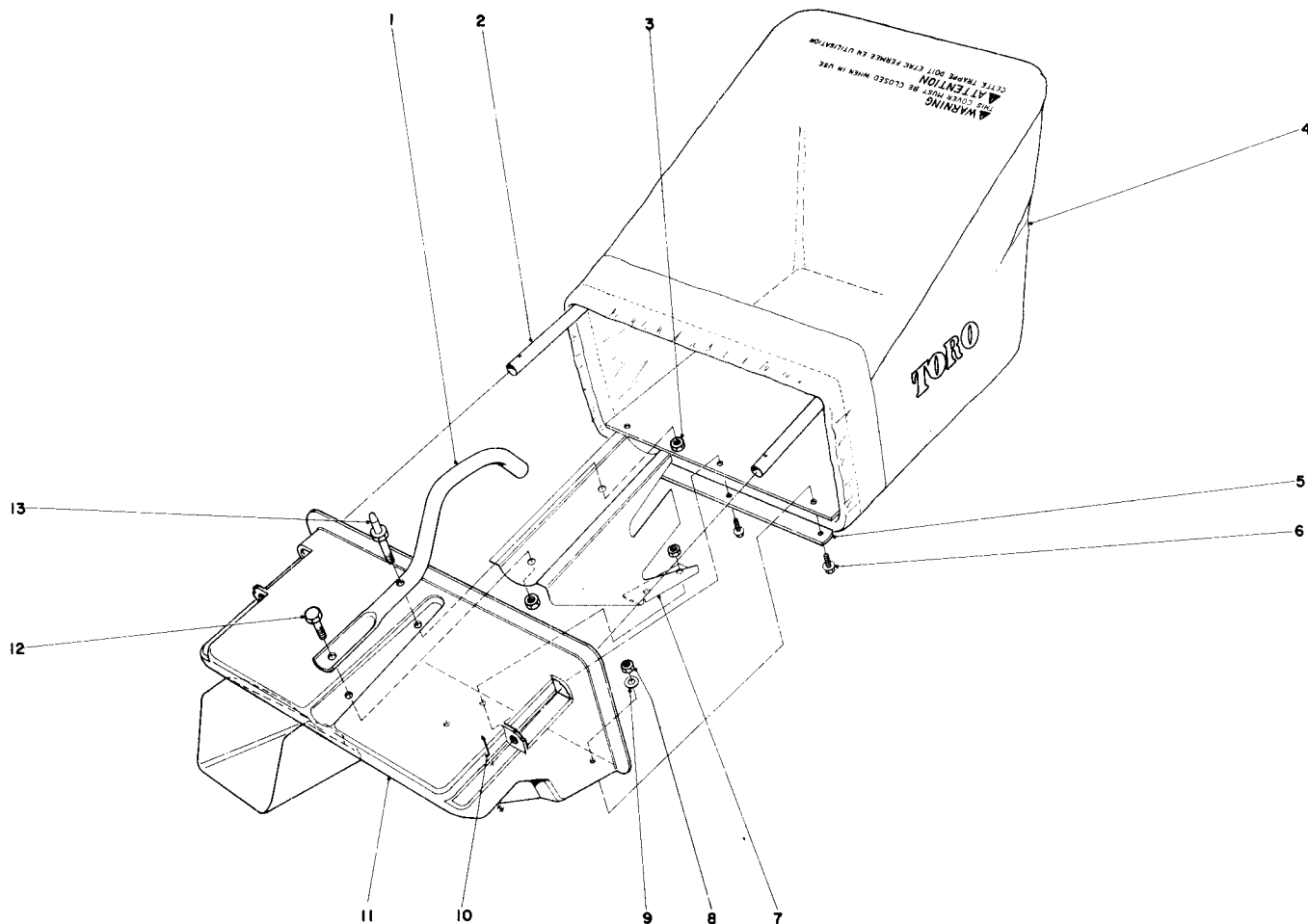
Ref. No.	Part No.	Description	No. Used
7	32146-5	Locknut	2
8	6-6330	Handle Screw	2
9	218-466	Clip	1
10	233-41	Handle Knob	2
11	3230-4	Carriage Bolt	2
12	3290-410	Push Mount Tie	1



HANDLE ASSEMBLY (MODEL NO. 16890)

Ref. No.	Part No.	Description	No. Used
1	38-0810	Lower Handle	1
2	38-0620	Upper Handle	1
3	32146-17	Locknut	1
4	26-5620	Shoulder Bolt	2
5	33-2536	Throttle Control	1
6	29-6290	Danger – Decal	1
7	38-5150	Decal -- Traction Control	1
8	3272-6	Cotter Pin	2
9	37-4480	Squeeze Lever	1
10	38-9150	Link Control Rod	1
11	321-10	Capscrew	1
12	32149-1	Nut	2

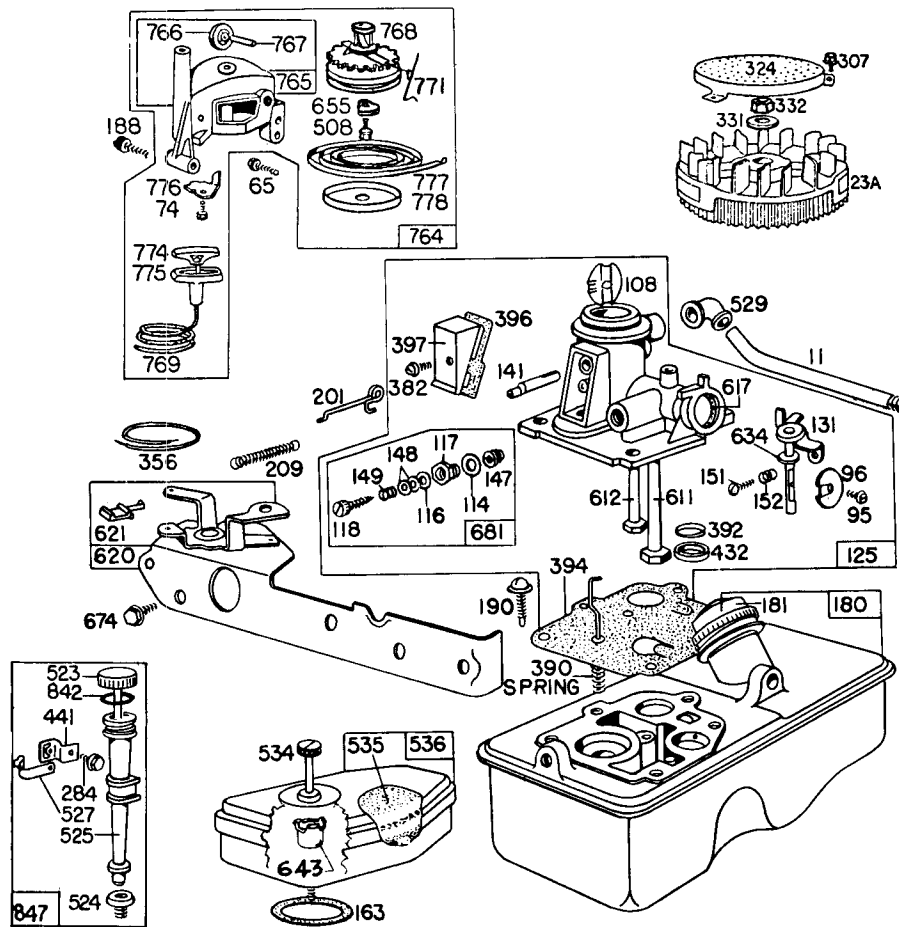
Ref. No.	Part No.	Description	No. Used
13	3-6481	Sleeve Control Rod	1
14	32146-5	Locknut	3
15	6-6330	Handle Screw	2
16	22-6030	Control Rod	1
17	218-466	Clip	1
18	3256-22	Washer	1
19	233-41	Handle Knob	2
20	3290-410	Push Mount Tie	1
21	3256-2	Washer	2
22	3230-4	Carriage Bolt	2
23	19-1470	Shoulder Screw	1



GRASS CATCHER ASSEMBLY (MODEL NO. 16880 & 16890)

Ref. No.	Part No.	Description	No. Used
1	38-0520	Handle Bag	1
2	37-9990	Bag Frame	1
3	32146-5	Locknut	2
4	8-7939	Grass Bag	1
5	38-4690	Bag Retainer	1
6	3290-321	Hex Hd. Screw	4
7	38-1120	Baffle -- Bag Shell	1

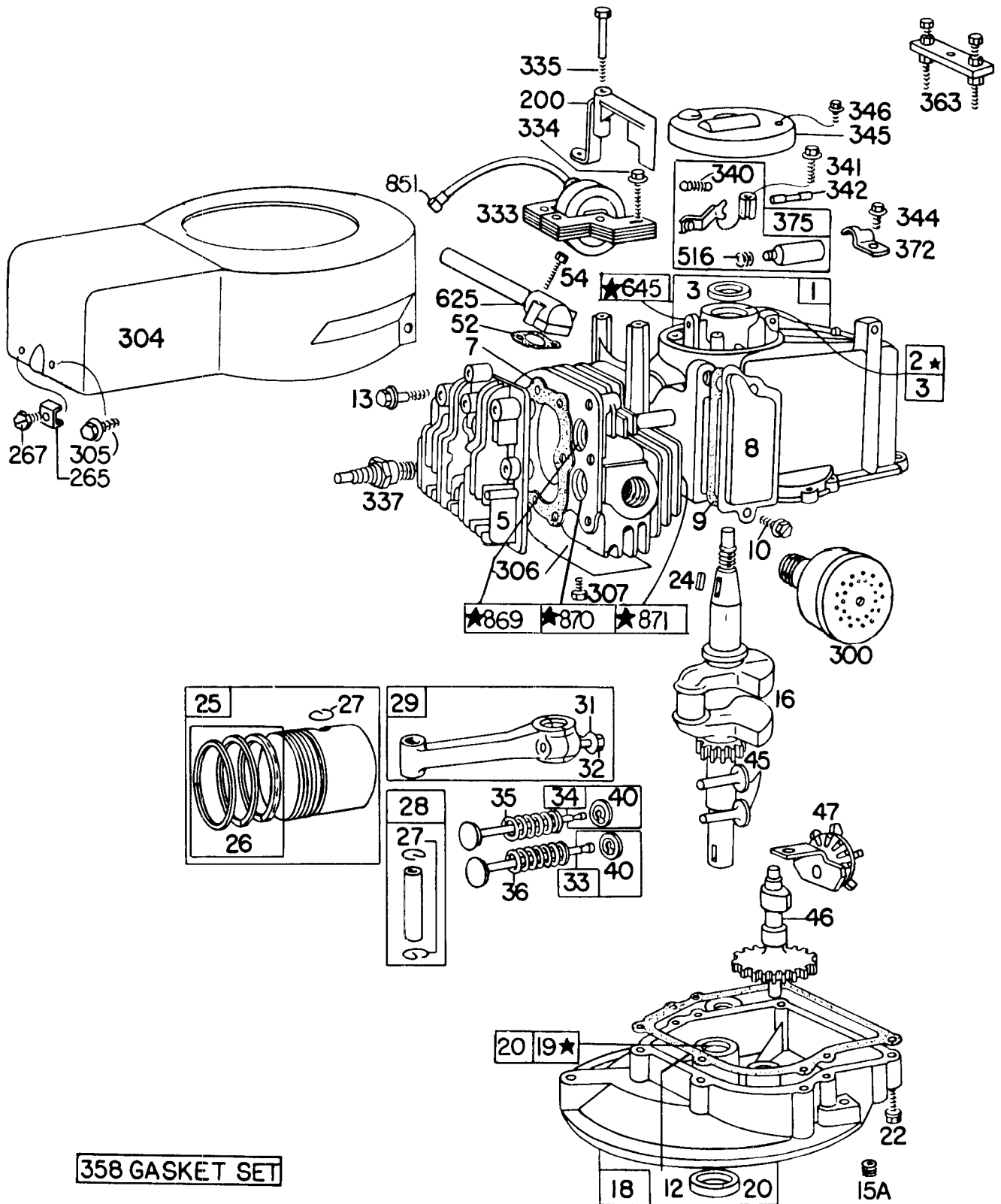
Ref. No.	Part No.	Description	No. Used
8	32146-18	Locknut	4
9	3256-14	Washer	2
10	3272-6	Cotter Pin	2
11	38-1231	Bag Shell	1
12	322-3	Capscrew	1
13	38-0530	Stud Handle	1



CARBURETOR ASSEMBLY BRIGGS & STRATTON MODEL NO. 92908-2055-01

Ref. No.	Part No.	Description	No. Used	Ref. No.	Part No.	Description	No. Used
11	230802	Tube - Breather	1	441	222530	Bracket - Oil Fill Tube	1
23A	299982	Flywheel - Magneto	1	508	93158	Screw - Sem	1
65	93587	Screw - Vertical Pull Starter Mtg.	1	523	391838	Cap With Dipstick - Oil Filler	
74	93490	Screw - Sem	1	Note: For Complete Oil Fill Cap With Dipstick & Oil Filler Tube Assembly - Order Part No. 392055.			
95	93499	Screw - Throttle Valve Mtg. Sem	1	524	68838	Seal - Filler Tube	1
96	211237	Valve - Throttle	1	525	280131	Tube - Oil Filler	1
108	298819	Valve - Choke	1	527	222548	Clamp - Oil Filler Tube	1
114	66594	Gasket - Needle Valve Nut	1	529	67838	Grommet - Breather	1
116	65978	Packing - Needle Valve	1	534	93374	Screw - Air Cleaner	1
117	230590	Nut - Needle Valve	1	535	270579	Element Air Cleaner	1
118	23433	Nut - Needle	1	536	390055	Cleaner Assembly - Air	1
125	390065	Carburetor Assembly	1	611	297219	Pipe - Fuel (Long)	1
131	299977	Shaft & Lever - Throttle	1	612	296811	Pipe - Fuel (Short)	1
141	68908	Shaft - Choke	1	617	270344	Seal - Fuel Intake Tube	1
147	230591	Seat - Needle Valve	1	620	299974	Plate - Carburetor Control	
148	22235	Washer - Needle Valve	2	Uses: 222984 Control Bracket			
149	26336	Spring - Needle Valve	1	621	297472	Switch - Stop	1
151	93524	Screw - Rd. Hd. - 5-40 x 1/2	1	634	270167	Washer - Throttle Shaft (Felt)	1
152	260746	Spring - Throttle Adj.	1	643	221321	Cup - Air Cleaner	1
163	270816	Gasket - Air Cleaner Mounting	1	655	222057	Anchor - Spring	1
180	391694	Tank Assembly - Fuel	1	674	93447	Screw - Tank To Bracket	1
181	298425	Cap - Fuel Tank	1	681	299060	Needle Valve Kit	1
188	93585	Screw - Fuel Tank and Starter Mtg.	1	764	391486	Starter Assembly - Vertical Pull	1
190	93440	Screw - Fuel Tank Mtg.	1	765	299947	Housing - Vertical Pull Starter	1
201	261027	Link - Governor	1	766	280022	Pulley - Rope (Small)	1
209	261034	Spring - Governor (For 2800 to 3000 RPM)	1	767	231048	Pin - Small Rope Pulley (7/16" Long)	1
284	93572	Screw - Clamp Mtg.	1	768	299948	Pulley & Gear Assembly - Starter	1
307	93490	Screw - Cylinder Shield & Rotating Screen Mounting Sem	1	769	66734	Rope - Vertical Pull Starter	1
324	222063	Screen - Rotating	1	771	299961	Clip - Vertical Pull Starter	1
331	220865	Washer - Flywheel	1	774	280121	Insert - Starter Handle	1
332	92284	Nut - Flywheel	1	775	280036	Grip - Starter Rope	1
356	298479	Wire - Ground	1	776	222049	Guide - Rope	1
382	93545	Screw - Choke Link Cover	1	777	390066	Spring - Vertical Pull Starter	1
390	261015	Spring - Diaphragm	1	778	280021	Cover - Vertical Pull Starter Pulley	1
392	260455	Spring - Fuel Pump Diaphragm	1	842	270920	Seal - Oil Filler Cap	1
394	391681	Diaphragm - Carburetor	1	847	392055	Tube Assembly - Oil Fill	1
396	270571	Gasket - Choke Link Cover	1				
397	211678	Cover - Choke Link	1				
432	221377	Cap - Spring	1				

BRIGGS & STRATTON ENGINE MODEL NO. 92908-2055-01



358 GASKET SET

***NOTE-SPECIAL TOOLS REQUIRED FOR INSTALLING
SEE REPAIR INSTRUCTION MANUAL**

BRIGGS & STRATTON ENGINE MODEL NO. 92908-2055-01

Ref. No.	Part No.	Description	No. Used	Ref. No.	Part No.	Description	No. Used
1	298988	Cylinder Assembly	1	46	210453	Gear -- Cam	1
2	293708	Bushing -- Cylinder Note: Requires Special Tools For Installation	1	47	294652	Oil Slinger Gear & Bracket	1
3	299819	Seal -- Oil	1	52	270345	Gasket -- Intake Elbow	1
5	211479	Head -- Cylinder	1	54	93485	Screw -- Intake Elbow Mtg.	1
7	270341	Gasket -- Cylinder Head	1	200	68388	Blade -- Governor	1
8	298383	Breather -- Valve Chamber	1	265	22372	Clamp -- Casing	1
9	270239	Gasket -- Valve Cover	1	267	93469	Screw -- Clamp Mtg.	1
10	93394	Screw -- Breather	1	300	391435	Muffler -- Exhaust	1
12	*270833	Gasket -- Crankcase -- .015" Thick (Standard)	1	304	390279	Housing -- Blower	1
	*270895	Gasket -- Crankcase -- .005" Thick	1	305	93559	Screw -- Blower Housing Mounting Sem	1
	*270896	Gasket -- Crankcase -- .009" Thick	1	306	221805	Shield -- Cylinder	1
13	93111	Screw -- Cylinder Head (1-15/16" Long)	1	307	93490	Screw -- Cylinder Shield & Rotating Screen Mtg. Sem	1
15A	93418	Plug -- Oil Drain (Socket Head)	1	333	298502	Armature -- Magneto	1
16	261417	Crankshaft	1	334	93381	Screw -- Armature Mtg. Sem	1
18	390810	Sump -- Oil	1	335	93435	Screw -- Armature & Governor Blade Mounting Sem	1
19	293709	Bushing -- Oil Sump Note: Requires Special Tools For Installation	1	337	293918	Plug -- Spark (W/Gasket) (Resistor Type) 1-1/2" High Spark Plugs Use Ignition Cable Terminal No. 221798	1
20	391483	Seal -- Oil	1	340	26018	Spring -- Breaker Arm	1
22	93032	Screw -- Sump Mtg. Sem	1	341	93381	Screw -- Breaker Arm Mounting Sem	1
24	61760	Key -- Flywheel	1	342	65704	Plunger -- Breaker Point	1
25	298904	Piston Assy. -- Standard	1	344	93042	Screw -- Condenser Clamp Mounting Sem	1
	298905	Piston Assy. -- .010" O.S.	1	345	220366	Cover -- Breaker Point & Condenser	1
	298906	Piston Assy. -- .020" O.S.	1	346	93705	Screw -- Dust Cover Mounting	1
	298907	Piston Assy. -- .030" O.S.	1	358	298989	Gasket Set	1
		PISTON RING SETS: Note: For Chrome Piston Ring Set - Standard Size - Order Part No. 299742.	1	363	19069	Puller -- Flywheel (Optional Accessory)	1
26	298982	Ring Set -- Standard Piston	1	372	220477	Clamp -- Condenser	1
	298983	Ring Set -- .010" O.S. Piston	1	375	294628	Breaker Points & Condenser Set Note: 299061 Ignition Kit Includes: 294628 Point Set 65704 Plunger 61760 Key -- Flywheel	1
	298984	Ring Set -- .020" O.S. Piston	1	516	260374	Spring -- Connector	1
	298985	Ring Set -- .030" O.S. Piston	1	625	298775	Tube -- Fuel Intake	1
27	26026	Lock -- Piston Pin	1	645	23513	Bushing -- Plunger	1
28	298909	Pin Assembly -- Piston -- Std.	1	851	221798	Terminal -- Ignition Cable	1
	298908	Pin Assembly -- Piston -- .005" O.S.	1	869	210879	Seat -- Intake Valve (Std.) Note: For Installation & Options See Repair Manual.	1
29	294201	Rod Assembly -- Connecting Note: For Connecting Rod W/.020" Undersize Crankpin Bore -- Order No. 296079.	1	870	211291	Seat -- Exhaust Valve (Std.) Note: For Installation & Options See Repair Manual	1
31	220756	Lock -- Conn. Rod Screw	1	871	63709	Guide -- Exhaust Valve	1
32	92296	Screw -- Connecting Rod	1				
33	296676	Valve -- Exhaust	1				
34	296677	Valve -- Intake	1				
35	290552	Spring -- Intake Valve	1				
36	26478	Spring -- Exhaust Valve	1				
40	93312	Retainer -- Valve Spring	1				
45	230173	Tappet -- Valve	1				

IDENTIFICATION AND ORDERING

MODEL AND SERIAL NUMBERS

The Mower has two identification numbers: a model number and a serial number. The two numbers are stamped on a decal which is located on the mower housing between the rear wheels. In any correspondence concerning the mower, supply model and serial numbers to assure that correct information and replacement parts are obtained.

To order replacement parts from an Authorized TORO Service Dealer, supply the following information:

1. Model and serial numbers of the mower.
2. Part number, description, and quantity of part(s) desired.

Note: Do not order by reference number if a parts catalog is being used; use the PART NUMBER.

The Toro Promise

A ONE YEAR LIMITED WARRANTY

The Toro Company promises to repair any TORO Product if defective in materials or workmanship. The following time periods from the date of purchase apply:

Residential Product 1 Year
Residential Products Used Commercially 45 Days

The costs of parts and labor are included, but the customer pays the transportation costs. Just return any residential product to an Authorized TORO Service Dealer or TORO Distributor.

Should you feel your TORO Product is defective and wish to rely on The Toro Promise, the following procedure is recommended:

1. Contact any Authorized TORO Service Dealer, TORO Master Service Dealer, or TORO Distributor (the Yellow Pages of your telephone directory is a good reference source).
2. He will either instruct you to return the product to him or recommend another Authorized TORO Service outlet which might be more convenient.
3. Bring the product along with your original sales slip, or other evidence of purchase date, to the service dealer.
4. The servicing dealer will inspect the unit, advise you whether the product is defective and, if so, make all repairs necessary to correct the defect without extra charge to you.

If for any reason you are dissatisfied with the dealer's analysis of the defect or the service performed, you may contact us.

Write:
TORO Consumer Service Department
8111 Lyndale Avenue South
Minneapolis, Minnesota 55420

The above remedy of product defects through repair by an Authorized TORO Service Dealer is the purchaser's sole remedy for any defect.

THERE IS NO OTHER EXPRESS WARRANTY. ALL IMPLIED WARRANTIES OF MERCHANTABILITY AND

FITNESS FOR USE ARE LIMITED TO THE DURATION OF THE EXPRESS WARRANTY.

Some states do not allow limitations on how long an implied warranty lasts, so the above limitation may not apply to you.

This warranty applies only to parts or components which are defective and does not cover repairs necessary due to normal wear, misuse, accidents, or lack of proper maintenance. Regular, routine maintenance of the unit to keep it in proper operating condition is the responsibility of the owner.

All warranty repairs reimbursable under The Toro Promise must be performed by an Authorized TORO Service Dealer using Toro approved replacement parts.

Repairs or attempted repairs by anyone other than an Authorized TORO Service Account are not reimbursable under The Toro Promise. In addition, these unauthorized repair attempts may result in additional malfunctions, the correction of which is not covered by warranty.

THE TORO COMPANY IS NOT LIABLE FOR INDIRECT, INCIDENTAL OR CONSEQUENTIAL DAMAGES IN CONNECTION WITH THE USE OF THE PRODUCT INCLUDING ANY COST OR EXPENSE OF PROVIDING SUBSTITUTE EQUIPMENT OR SERVICE DURING PERIODS OF MALFUNCTION OR NON-USE.

Some states do not allow the exclusion or limitation of incidental or consequential damages, so the above limitation or exclusion may not apply to you.

This warranty gives you specific legal rights, and you may also have other rights which vary from state to state.

COUNTRIES OTHER THAN THE UNITED STATES OR CANADA

Customers who have purchased TORO products exported from the United States or Canada should contact their TORO Distributor (Dealer) to obtain guarantee policies for your country, province or state. If for any reason you are dissatisfied with your Distributor's service or have difficulty obtaining guarantee information, contact

the TORO importer. If all other remedies fail, you may contact us at The Toro Company.

International Group
Service Department
One Corporate Center
7401 Metro Boulevard
Minneapolis, Minnesota 55435 U.S.A.