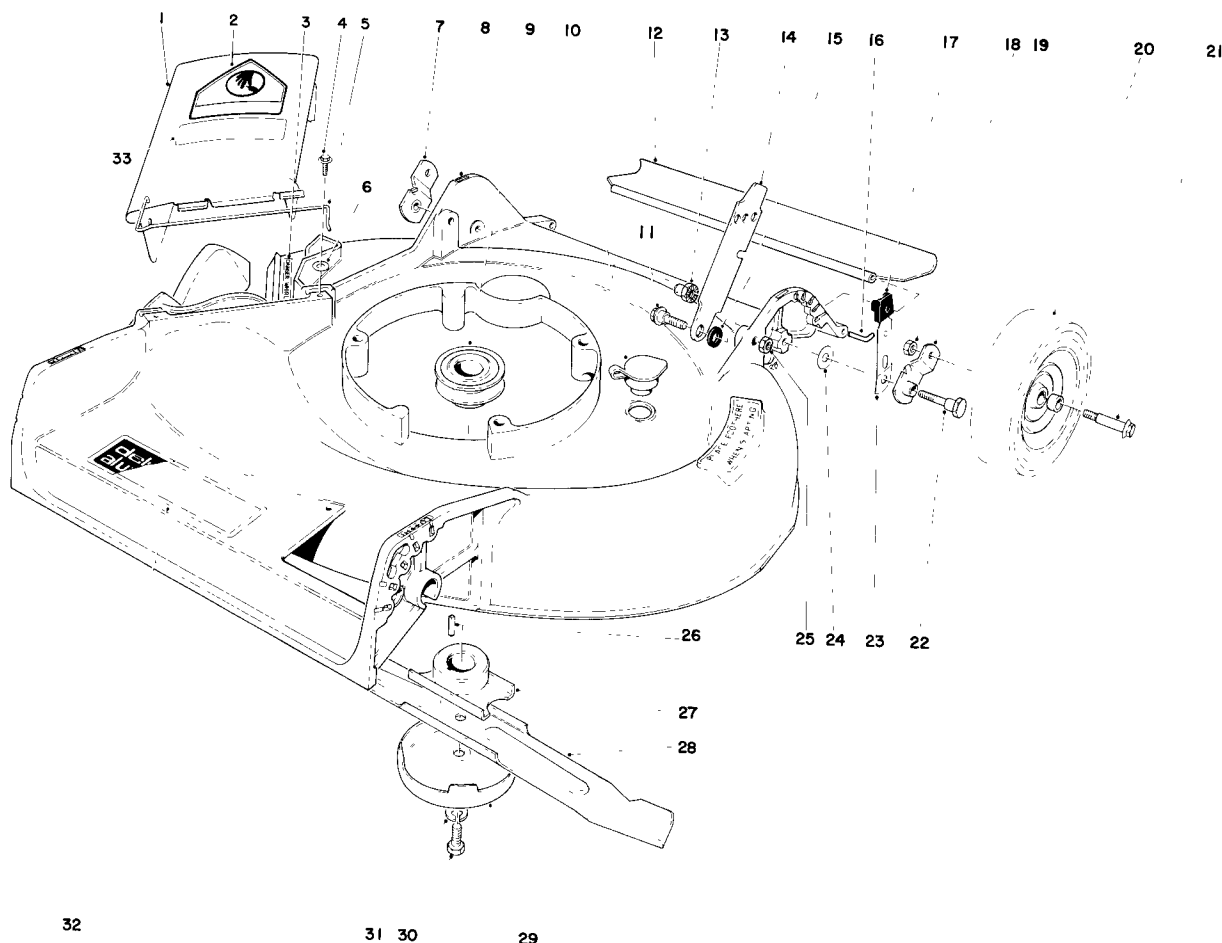




1980

FORM NO. 3311-561

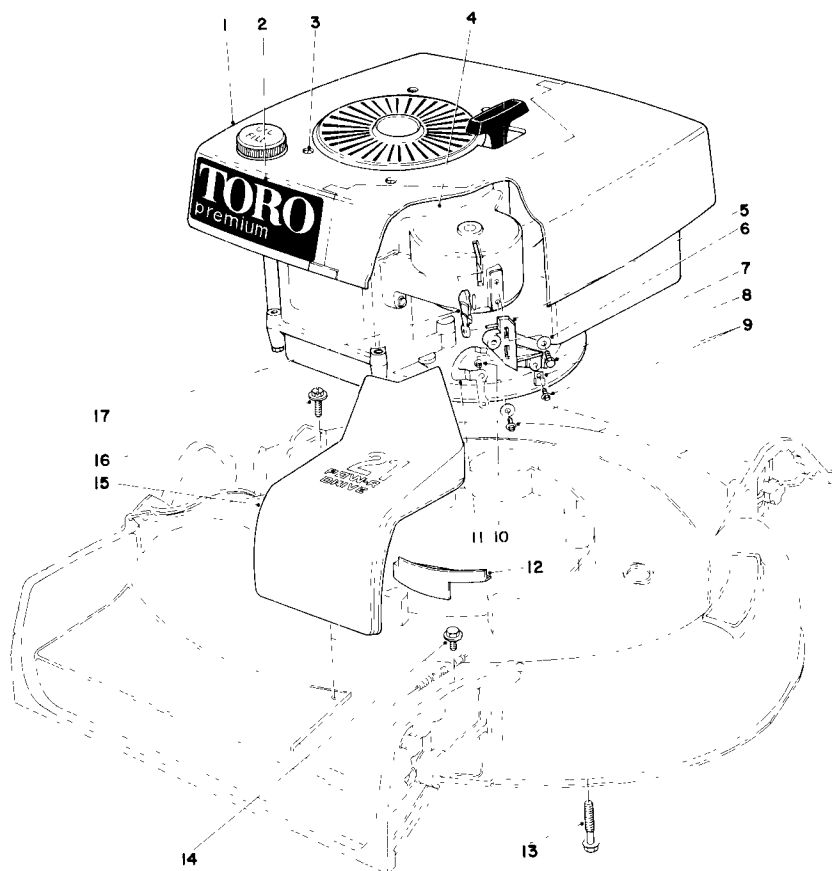
21" S.P. MODEL NO. 16320-0000001 &amp; UP

**PARTS  
CATALOG****21" S.P. FINGERTIP START  
SIDE DISCHARGE****HOUSING ASSEMBLY**

Ref. No.	Part No.	Description	No. Used
1	27-7810	Deflector Cover Assembly (Incl. Ref. #2 & 5)	1
2	39-5770	Decal - Danger	1
3	22-7350	Decal - Danger	1
4	12-3270	Screw - Special	2
5	20-2640	Hinge Spring	1
6	3256-1	Washer	2
7	20-2130	Pivot Arm "B"	1
8	8-7629	Housing	1
9	21-5580	Pulley - Driver	1
10	6-4500	Plug - Washout	1
11	27-7210	Shoulder Screw	2
12	22-4950	Rear Safety Shield	1
13	12-2080	Handle Pivot Nut	2
14	5-2446	Handle Latch	2
15	27-6510	Spacer - Handle Latch	2
16	33-3201	Rod Shield	1
17	25-7740	Knob Arm	2
18	32146-6	Nut	2

\*Not Illustrated

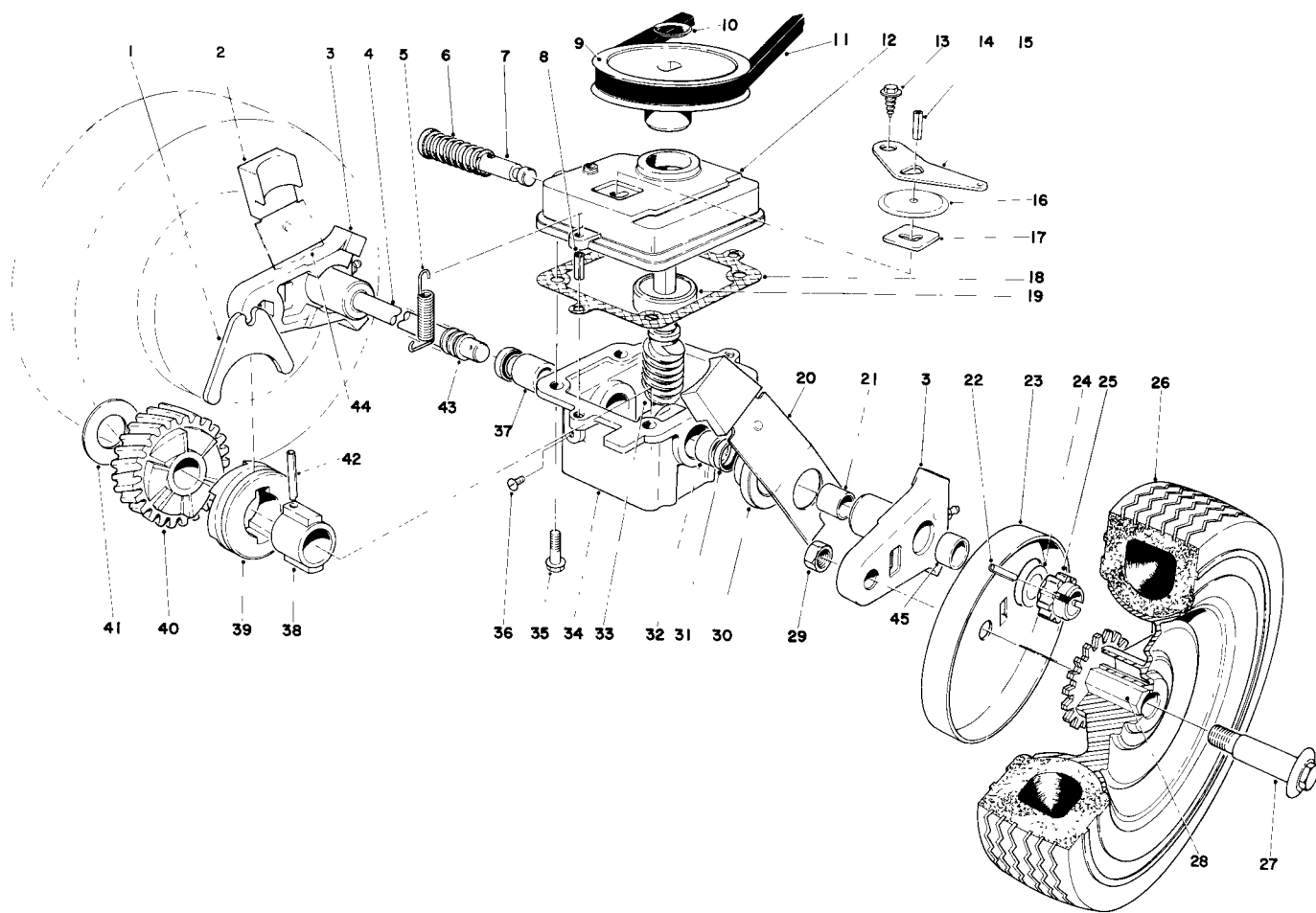
Ref. No.	Part No.	Description	No. Used
19	20-2140	Pivot Arm "A"	1
20	17-4120	Wheel & Tire Assembly	2
21	3-2652	Wheel Bolt	2
22	3-0655	Pivot Screw	2
23	25-8000	Spring Arm	2
24	5-4460	Pivot Washer	2
25	32146-5	Nut	2
26	27-6300	Key Square	1
27	20-2750	Blade Retainer	1
28	20-2720	Blade	1
29	8-4240	Cup Anti Scalp	1
30	3-5246	Screw Special	1
31	3253-22	Lockwasher	1
32	40-2210	Decal - Deluxe Aluminum	1
33	20-4330	Decal - Caution	1
*	8-7379	Loose Parts	1
*	25-9150	Decal - Replacement Serial Plate	1



## ENGINE ASSEMBLY

Ref. No.	Part No.	Description	No. Used
1	37-9830	Shroud	1
2	40-2570	Decal — Toro	1
3	32104-94	Screw	4
4	221-609	Engine	1
5	27-9280	Block — Cable & Pivot	1
6	3256-14	Washer	3
7	32144-19	Screw	2
8	2412-63	Casing Clamp	1
9	32104-76	Screw	2

Ref. No.	Part No.	Description	No. Used
10	25-0520	Bushing Cam Interlock	1
11	25-8150	Cam Interlock	1
12	27-7470	Cap Housing	1
13	11-0580	Screw	3
14	32144-11	Hex Hd. Thread Forming Screw	1
15	28-4730	Cover — Belt Drive	1
16	12-5450	Screw Special	2
17	25-0350	Lever Interlock	1

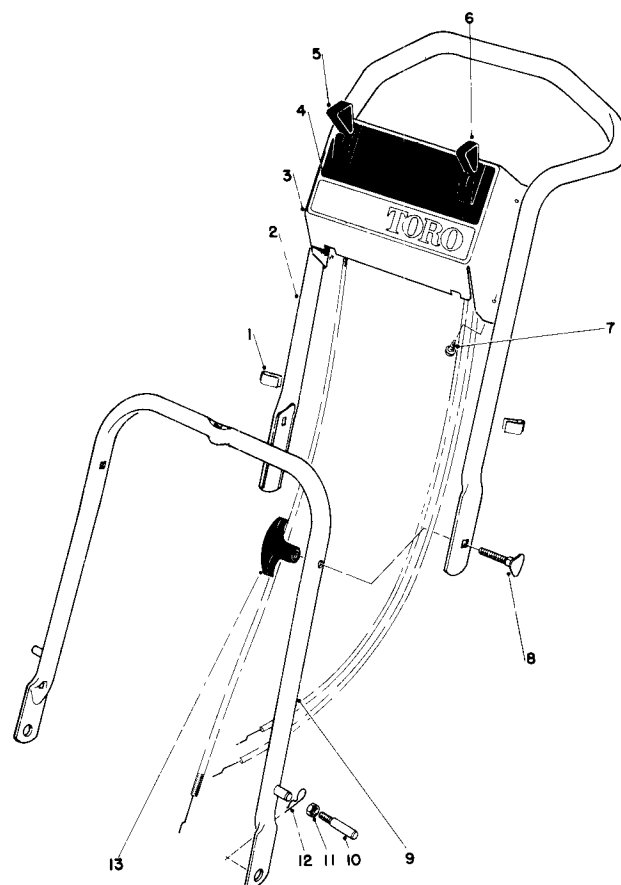


## GEAR BOX ASSEMBLY

Ref. No.	Part No.	Description	No. Used
1	5-3247	Shifter Fork	1
2	25-7740	Knob Arm	2
3	38-2220	Pivot Arm (Incl. Ref. #21 & 45)	2
4	37-9440	Drive Shaft	1
5	17-4490	Spring – Belt Tension	1
6	3-0731	Spring	1
7	5-3248	Shifter Rod	1
8	32121-1	Roll Pin	2
9	20-2780	Pulley	1
10	3290-346	Push On Retainer	1
11	5-4505	V-Belt	1
12	39-1100	Gear Case Cover	1
13	32140-64	Self Tapping Screw	1
14	32121-23	Roll Pin	1
15	5-3252	Shifter Arm	1
16	3-2615	Transmission Dust Cover	1
17	3-0681	Latch Plate	1
18	36-1000	Gasket – Gear Case	1
19	251-284	Ball Bearing	1
20	25-7930	Spring Arm Assembly L.H.	1
21	256-206	Bushing	2
22	32121-98	Spiral Pin	2
23	18-9820	Wheel Cover	2
24	18-9810	Thrust Washer	2
25	18-9690	Pinion Gear	2

Ref. No.	Part No.	Description	No. Used
26	11-9470	Wheel & Tire Assembly (Incl. Ref. #28)	2
27	3-2652	Wheel Bolt	2
28	11-9530	Wheel Bushing	2
29	32146-6	Nut	2
30	3-2646	End Cap	2
31	253-140	Oil Seal	2
32	256-110	Bushing	1
33	8-5679	Worm Shaft & Gear (Incl. Ref. #40)	1
34	8-0479	Gear Case (Incl. Ref. #31, 32 & 37)	1
35	11-9760	Screw	4
36	28-1550	Screw Nylon	1
37	256-263	Bushing	1
38	3-0721	Sleeve	1
39	19-5660	Clutch Jaw	1
40		Helical Gear	1
41	3-0724	Thrust Washer	1
42	32121-98	Spiral Pin	1
43	24-7920	Cover Drive Shaft	1
44	25-7920	Spring Arm Assembly R.H.	1
45	256-1	Bushing	2
*	8-6889	Gear Case Assembly Complete	1

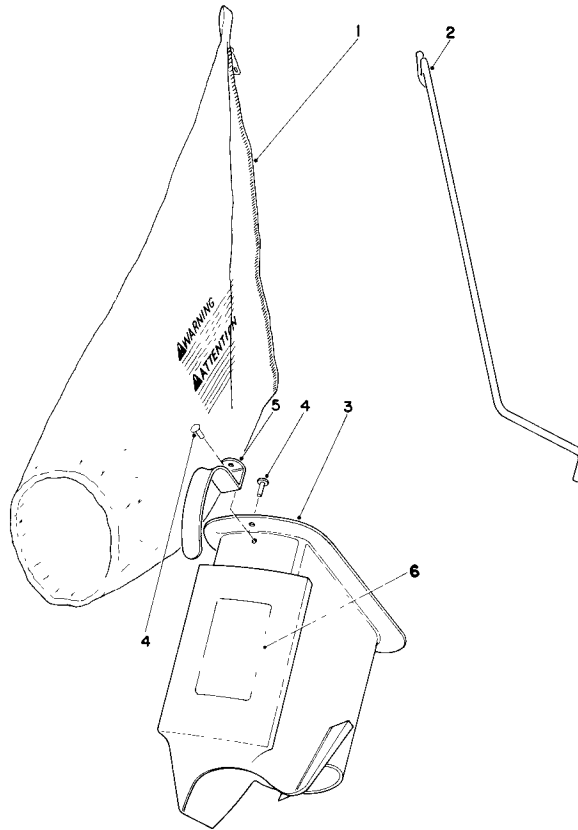
\*Not Illustrated.



## HANDLE ASSEMBLY

Ref. No.	Part No.	Description	No. Used
1	218-465	Clip	4
2	26-0540	Upper Handle	1
3	39-6610	Control Plate	1
4	39-6590	Decal — Control Plate	1
5	39-5870	Throttle Control	1
6	39-5880	Traction Control	1
7	32104-76	Screw Self Tapping	4

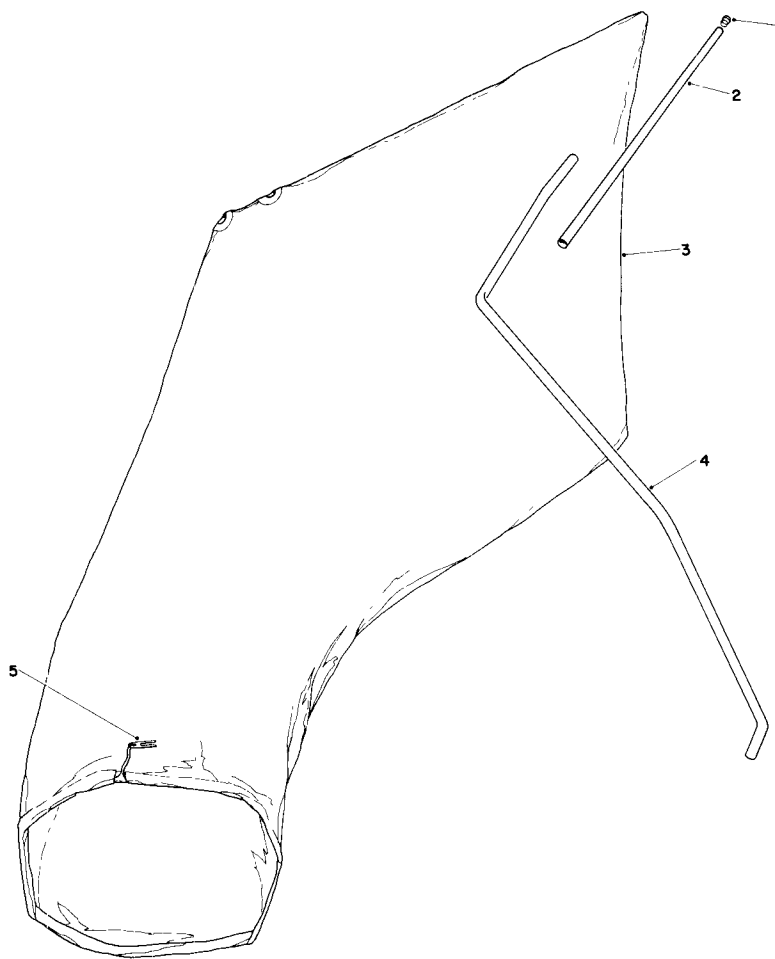
Ref. No.	Part No.	Description	No. Used
8	6-6330	Handle Screw	2
9	38-2620	Lower Handle	1
10	17-9380	Handle Pin	2
11	32146-8	Locknut	2
12	3290-255	Hair Pin Cotter	2
13	233-41	Handle — Knob	2



### BAGGING KIT NO. 36-8380 (Optional)

Ref. No.	Part No.	Description	No. Used
1	6-0929	Grass Bag	1
2	20-4590	Bag Rod	1
3	6-1089	Grass Chute (Incl. Ref. #4 & 5)	1

Ref. No.	Part No.	Description	No. Used
4	3295-26	Rivet	2
5	20-4650	Handle Chute	1
6	36-5230	Bag Chute Decal	1

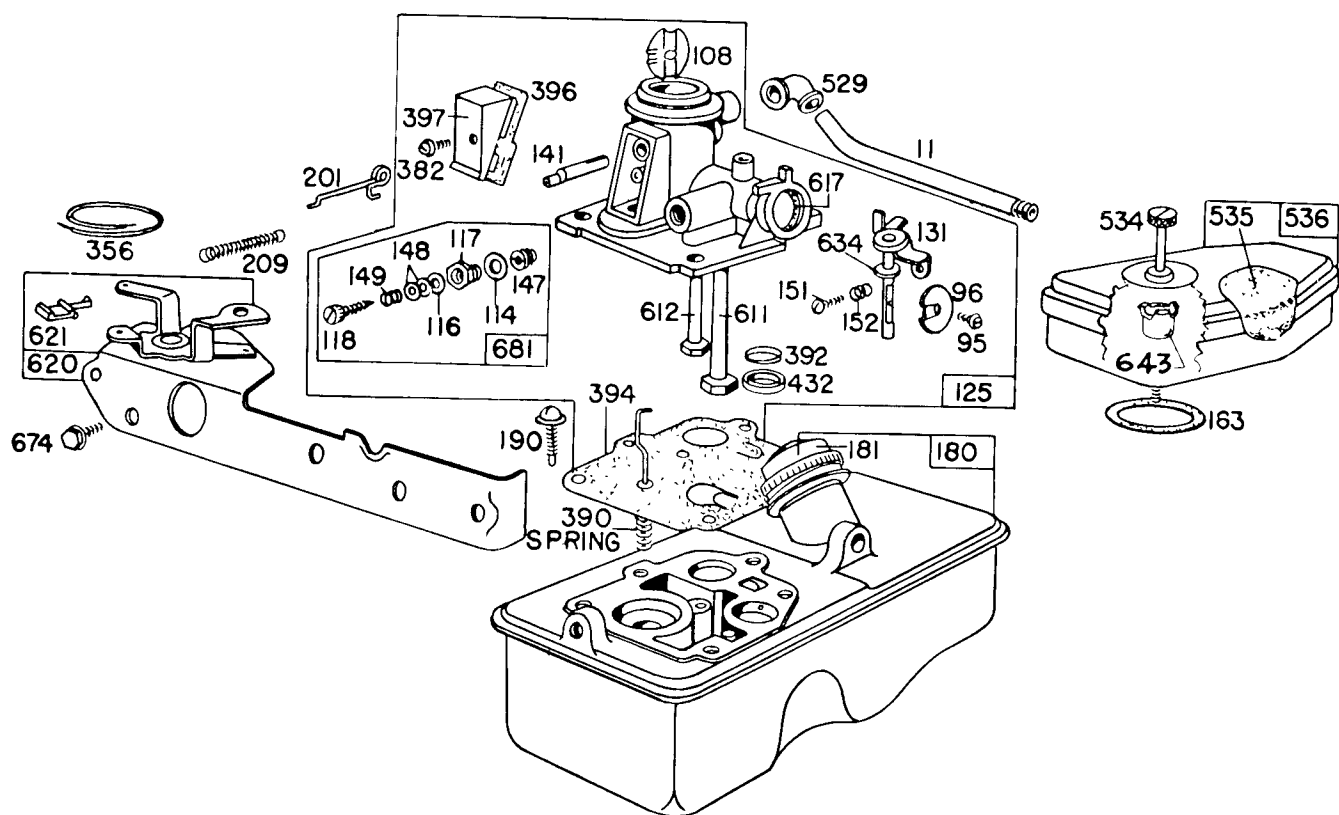


## GIANT BAGGING KIT NO. 29-9750 (Optional)

Ref. No.	Part No.	Description	No. Used
1	2410-29	Cap	1
2	29-7000	Tube 28"	1
*	11-0650	Tube 25"	1

Ref. No.	Part No.	Description	No. Used
3	8-4719	Bag (Incl. Ref. #5)	1
4	22-4820	Hanger Rod	1
5	3-2781	Bag Cord Fasteners	1

\*Not Illustrated

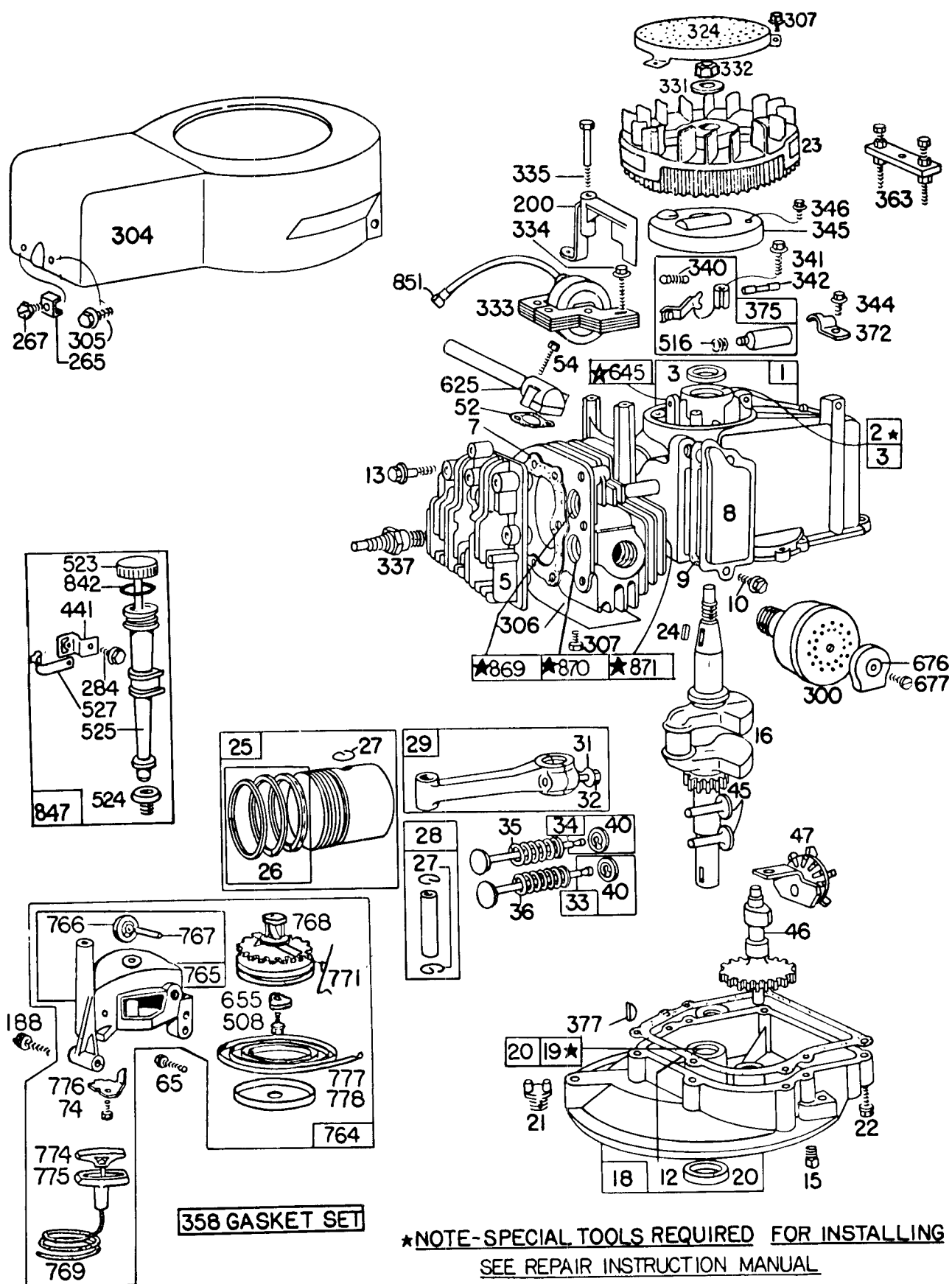


## ENGINE BRIGGS & STRATTON MODEL 92908-2052-01

Ref. No.	Part No.	Description	No. Used
11	230802	Tube — Breather	1
95	93499	Screw — Throttle Valve Mtg. Sem	1
96	211237	Valve — Throttle	1
108	298819	Valve — Choke	1
114	66594	Gasket — Needle Valve Nut	1
116	65978	Packing — Needle Valve	1
117	230590	Nut — Needle Valve	1
118	23433	Valve — Needle	1
125	390065	Carburetor Assembly	1
131	299977	Shaft and Lever — Throttle	1
141	68908	Shaft — Choke	1
147	230591	Seat — Needle Valve	1
148	22235	Washer — Needle Valve	2
149	26336	Spring — Needle Valve	1
151	93524	Screw — Rd. Hd. — 5-40 x 1/2	1
152	260746	Spring — Throttle Adj.	1
163	270816	Gasket — Air Cleaner Mtg.	1
180	391694	Tank Assy. — Fuel used on type Nos. 0500 and up	1
181	298425	Cap — Fuel Tank	1
190	93440	Screw — Fuel Tank Mtg.	1
201	261027	Link — Governor	1

Ref. No.	Part No.	Description	No. Used
209	261419	Spring — Governor	1
356	298479	Wire — Ground	1
382	93545	Screw — Choke Link Cover	1
390	261015	Spring — Diaphragm	1
392	260455	Spring — Fuel Pump Diaphragm	1
394	391681	Diaphragm — Carburetor	1
396	270571	Gasket — Choke Link Cover	1
397	211678	Cover — Choke Link	1
432	221377	Cap — Spring	1
529	67838	Grommet — Breather	1
534	93374	Screw — Air Cleaner	1
535	270579	Element — Air Cleaner	1
536	390055	Cleaner Assembly — Air	1
611	297219	Pipe — Fuel (long)	1
612	296811	Pipe — Fuel (short)	1
617	270344	Seal — Fuel Intake Tube	1
620	299974	Plate — Carburetor Control	1
621	297472	Switch — Stop	1
634	270167	Washer — Throttle Shaft (Felt)	1
643	221321	Cup — Air Cleaner	1
674	93447	Screw — Tank to Bracket	1
681	299060	Needle Valve Kit	1

# ENGINE BRIGGS & STRATTON MODEL 92908-2052-01





# ENGINE BRIGGS & STRATTON MODEL 92908-2052-01

Ref. No.	Part No.	Description	No. Used
1	298988	Cylinder Assembly	1
2	293708	Bushing — Cylinder <b>Note:</b> Requires special tools for installation.	1
3	299819	Seal — Oil	1
5	211479	Head — Cylinder	1
7	*270341	Gasket — Cylinder Head	1
8	298383	Breather — Valve Chamber	1
9	*270239	Gasket — Valve Cover	1
10	93394	Screw — Breather	1
12	*270833	Gasket — Crankcase — .015" thick (Standard)	1
	*270895	Gasket — Crankcase — .005" thick	1
	*270896	Gasket — Crankcase — .009" thick	1
13	93111	Screw — Cylinder Head (1-15/16" long)	1
15	91084	Plug — Oil Drain (Square Head)	1
16	261293	Crankshaft	1
18	390810	Sump — Oil	1
19	293709	Bushing — Oil Sump <b>Note:</b> Requires special tools for installation.	1
20	291841	Seal — Oil	1
21	66768	Plug — Oil Filler (Used on Type -01 only)	1
22	93032	Screw — Sump Mtg. Sem	1
23	299982	Flywheel — Magneto	1
24	61760	Key — Flywheel	1
25	298904	Piston Assy. — Standard	1
	298905	Piston Assy. — .010" O.S.	1
	298906	Piston Assy. — .020" O.S.	1
	298907	Piston Assy. — .030" O.S.	1
		<b>PISTON RING SETS</b> <b>Note:</b> For Chrome Piston Ring Set — standard size — order Part No. 299742	1
26	298982	Ring Set — Standard Piston	1
	298983	Ring Set — .010" O.S. Piston	1
	298984	Ring Set — .020" O.S. Piston	1
	298985	Ring Set — .030" O.S. Piston	1
27	26026	Lock — Piston Pin	1
28	298909	Pin Assy. — Piston — Standard	1
	298908	Pin Assy. — Piston — .005" O.S.	1
29	294201	Rod Assy. — Connecting <b>Note:</b> For Connecting Rod with .020" undersize Crankpin Bore — order No. 296079	1
31	220756	Lock — Conn. Rod Screw	1
32	92296	Screw — Connecting Rod	1
33	296676	Valve — Exhaust	1
34	296677	Valve — Intake	1
35	260552	Spring — Intake Valve	1
36	26478	Spring — Exhaust Valve	1
40	93312	Retainer — Valve Spring used with valves with groove in stem	1
45	230173	Tappet — Valve	1
46	210453	Gear — Cam	1
47	294652	Oil Slinger Gear and Bracket	1
52	*270345	Gasket — Intake Elbow	1
54	93485	Screw — Intake Elbow Mtg.	1
65	93587	Screw — Vertical Pull Starter Mtg.	1
74	93490	Screw — Sem	1
188	93585	Screw — Fuel Tank and Starter Mtg.	1
200	68388	Blade — Governor	1
265	22372	Clamp — Casing	1
267	93469	Screw — Clamp Mtg.	1

Ref. No.	Part No.	Description	No. Used
284	93572	Screw — Clamp Mtg.	1
300	391435	Muffler — Exhaust	1
304	299983	Housing — Blower	1
305	93559	Screw — Blower Housing Mtg. Sem	1
306	221805	Shield — Cylinder	1
307	93490	Screw — Cylinder Shield and Rotating Screen Mtg. Sem	1
324	222063	Screen — Rotating	1
331	220865	Washer — Flywheel	1
332	92284	Nut — Flywheel	1
333	298502	Armature — Magneto	1
334	93381	Screw — Armature Mtg. Sem	1
335	93435	Screw — Armature and Governor Blade Mtg. Sem	1
337	293918	Plug — Spark (with gasket) (Resistor Type) 1-1/2" high <b>Note:</b> Spark Plugs use Ignition Cable Terminal No. 221798	1
340	26018	Spring — Breaker Arm	1
341	93381	Screw — Breaker Arm Mtg. Sem	1
342	65704	Plunger — Breaker Point	1
344	93042	Screw — Condenser Clamp Mtg. Sem	1
345	220366	Cover — Breaker Point and Condenser	1
346	93705	Screw — Dust Cover Mtg.	1
358	298989	Gasket Set	1
363	19069	Puller — Flywheel (Optional Accessory)	1
372	220477	Clamp — Condenser	1
375	294628	Breaker Points and Condenser Set <b>Note:</b> 299061 Ignition Kit Includes: 294628 Point Set, 65704 Plunger, 61760 Key — Flywheel	1
377	93065	Key — Woodruff No. 6	1
441	222530	Bracket — Oil Fill Tube	1
508	93158	Screw — Sem	1
516	260374	Spring — Connector (Condenser Post)	1
523	391838	Cap with Dipstick — Oil Filler	1
524	68838	Seal — Filler Tube	1
525	280131	Tube — Oil Filler	1
527	222548	Clamp — Oil Filler Tube	1
625	298775	Tube — Fuel Intake	1
645	23513	Bushing — Plunger	1
655	222057	Anchor — Spring	1
676	222522	Deflector — Muffler	1
677	93705	Screw — Muffler Deflector	1
764	392064	Starter Assy. — Vertical Pull	1
765	392138	Housing — Vertical Pull Starter	1
766	280022	Pulley — Rope (small)	1
767	231048	Pin — Small Rope Pulley (7/16" long)	1
768	299948	Pulley and Gear Assy. — Starter	1
769	66734	Rope — Vertical Pull Starter	1
771	299961	Clip — Vertical Pull Starter	1
774	280121	Insert — Starter Handle	1
775	280036	Grip — Starter Rope	1
776	222049	Guide — Rope	1
777	390066	Spring — Vertical Pull Starter	1
778	280021	Cover — Vertical Pull Starter Pulley	1
842	270920	Seal — Oil Filler Cap	1
847	392055	Tube Assy. — Oil Fill (Used on Type -02 only)	1
851	221798	Terminal — Ignition Cable	1
869	210879	Seat — Intake Valve (Standard)	1
870	211291	Seat — Exhaust Valve (Standard)	1
871	63709	Guide — Exhaust Valve	1

\*Included in Gasket Set — Part No. 298989.

# The Toro Promise

## A ONE YEAR LIMITED WARRANTY

*The Toro Company promises to repair any TORO Product if defective in materials or workmanship. The following time periods from the date of purchase apply:*

Residential Product . . . . . 1 Year  
Residential Products Used Commercially . . . 45 Days

*The costs of parts and labor are included, but the customer pays the transportation costs. Just return any residential product to an Authorized TORO Service Dealer or TORO Distributor.*

Should you feel your TORO Product is defective and wish to rely on The Toro Promise, the following procedure is recommended:

1. Contact any Authorized TORO Service Dealer, TORO Master Service Dealer, or TORO Distributor (the Yellow Pages of your telephone directory is a good reference source).
2. He will either instruct you to return the product to him or recommend another Authorized TORO Service outlet which might be more convenient.
3. Bring the product along with your original sales slip, or other evidence of purchase date, to the service dealer.
4. The servicing dealer will inspect the unit, advise you whether the product is defective and, if so, make all repairs necessary to correct the defect without extra charge to you.

If for any reason you are dissatisfied with the dealer's analysis of the defect or the service performed, you may contact us.

Write:

TORO Consumer Service Department  
8111 Lyndale Avenue South  
Minneapolis, Minnesota 55420

The above remedy of product defects through repair by an Authorized TORO Service Dealer is the purchaser's sole remedy for any defect.

**THERE IS NO OTHER EXPRESS WARRANTY. ALL IMPLIED WARRANTIES OF MERCHANTABILITY AND FITNESS FOR USE ARE LIMITED TO THE DURATION OF THE EXPRESS WARRANTY.**

Some states do not allow limitations on how long an implied warranty lasts, so the above limitation may not apply to you.

This warranty applies only to parts or components which are defective and does not cover repairs necessary due to normal wear, misuse, accidents, or lack of proper maintenance. Regular, routine maintenance of the unit to keep it in proper operating condition is the responsibility of the owner.

All warranty repairs reimbursable under The Toro Promise must be performed by an Authorized TORO Service Dealer using Toro approved replacement parts.

Repairs or attempted repairs by anyone other than an Authorized TORO Service Account are not reimbursable under The Toro Promise. In addition, these unauthorized repair attempts may result in additional malfunctions, the correction of which is not covered by warranty.

**THE TORO COMPANY IS NOT LIABLE FOR INDIRECT, INCIDENTAL OR CONSEQUENTIAL DAMAGES IN CONNECTION WITH THE USE OF THE PRODUCT INCLUDING ANY COST OR EXPENSE OF PROVIDING SUBSTITUTE EQUIPMENT OR SERVICE DURING PERIODS OF MALFUNCTION OR NON-USE.**

Some states do not allow the exclusion or limitation of incidental or consequential damages, so the above limitation or exclusion may not apply to you.

This warranty gives you specific legal rights, and you may also have other rights which vary from state to state.

### COUNTRIES OTHER THAN THE UNITED STATES OR CANADA

Customers who have purchased TORO products exported from the United States or Canada should contact their TORO Distributor (Dealer) to obtain guarantee policies for your country, province or state. If for any reason you are dissatisfied with your Distributor's service or have difficulty obtaining guarantee information, contact

the TORO importer. If all other remedies fail, you may contact us at The Toro Company.

International Group  
Service Department  
One Corporate Center  
7401 Metro Boulevard  
Minneapolis, Minnesota 55435 U.S.A.

## PRODUCT CHANGES

In an effort to make improvements available to TORO owners as quickly as possible, minor changes are incorporated into Toro's products from time to time that do not become immediately shown in the Parts Catalog. If such a change apparently has been made in your unit, which is not reflected in your manual, see your TORO Distributor or his Authorized TORO Service Dealer for information and part numbers.

## IDENTIFICATION AND ORDERING

## Model and Serial Numbers

The Mower has two identification numbers: a model number and a serial number. The two numbers are stamped on a decal which is located on the mower housing between the rear wheels. In any correspondence concerning the mower, supply model and serial numbers to assure that correct information and replacement parts are obtained.

**To order replacement parts from an Authorized TORO Service Dealer, supply the following information:**

1. Model and serial numbers of the mower.
2. Part number, description, and quantity of part(s) desired.

**Note:** Do not order by reference number if a parts catalog is being used; use the PART NUMBER.

***Keep Your TORO All Toro***  ***Insist on Genuine Toro Parts***

## MAINTENANCE RECORD

[illegible]

## MAINTENANCE RECORD

[illegible]