



## Boot and Tube Kit

Z Master<sup>®</sup> 200 Series with 62in Mower

Model No. 78495

### Parts Catalog

---

#### Ordering Replacement Parts

To order replacement parts, please supply: the part number, the quantity, and the description of each part desired.

#### Understanding Reference Numbers

Each identified part in an illustration has a reference number. The reference number for a part also appears in the parts list, along with other information about the part.

This catalog uses two special reference number formats, one to indicate parts in a service assembly and another to indicate the quantity of a given part in an illustration.

#### Service Assembly Reference Numbers

Parts in service assemblies have reference numbers in the form **a:b**. The **a** represents the reference number of the entire service assembly and the **b** represents a sequential number unique to each part within the service assembly.

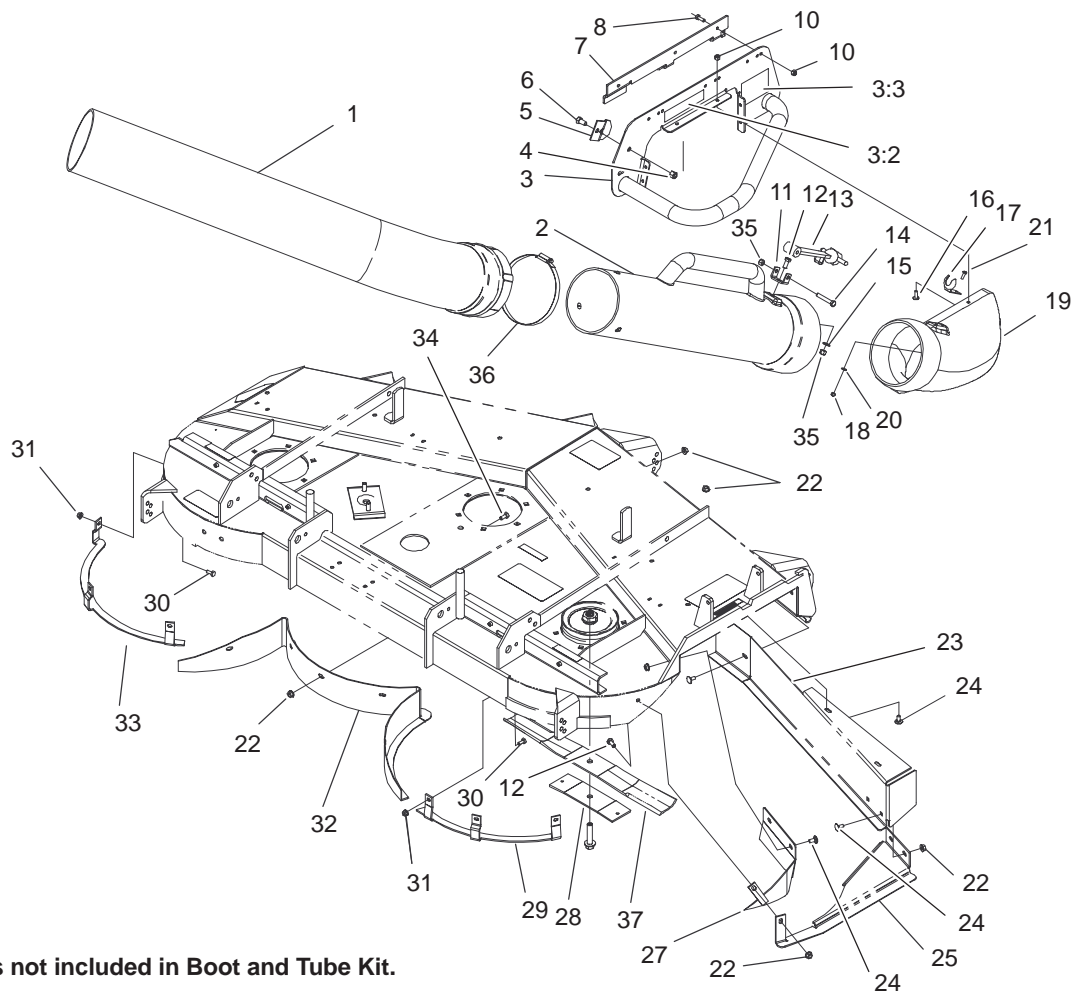
For example, a wheel assembly might be identified by reference number **6**, the tire by **6:1**, the valve by **6:2**, and the wheel by **6:3**. When you order the assembly identified by reference number **6**, you receive all parts identified by reference numbers **6:1**, **6:2**, and **6:3**. However, you may also order any part individually.

Reference numbers of this type appear in illustrations and in part lists.

#### Reference Numbers Indicating Quantity

In an illustration, if a reference number indicates more than one part, the reference number has the form **nX y**. The **n** represents the quantity of the part, the **X** is the multiplication symbol, and the **y** represents the reference number.

For example, in an illustration, the reference number **2X 37** means that two of the parts identified by reference number **37** are indicated.



Item 37 is not included in Boot and Tube Kit.

Sheet No.: 2

## Boot Assembly

Ref. No.	Part No.	Qty.	Description
1	105-8159	1	Tube-Elbow
2	105-8160	1	Tube-Straight
3	106-3340	1	Plate-Mounting
3:2	104-8569	1	Decal-Warning, Deflector
3:3	106-3339	1	Decal-Warning, Counter Weight
4	3296-39	1	Nut-Lock, NI
5	104-8575	1	Bracket-Clamp
6	323-4	1	Screw-HH
7	104-8573-03	1	Bracket-Mounting
8	321-4	3	Screw-HH
10	3296-42	9	Nut-Lock, NI
11	105-9707	1	Bracket-Anchor
12	322-3	2	Screw-HH
13	105-8155	1	Holddown-Hood
14	322-10	1	Screw-HH
15	3256-23	1	Washer-Flat
16	9114604	6	Screw-Head, Truss
17	105-9709	1	Bracket-Hood
18	3296-2	2	Nut-Lock
19	105-5531	1	Boot
20	3256-14	2	Washer-Flat
21	3290-500	2	Screw-PPH
22	32128-25	13	Nut-Flange
23	105-5535-01	1	Baffle-Front

Ref. No.	Part No.	Qty.	Description
24	3230-18	7	Screw-CARR
25	105-9731-01	1	Baffle-Cross
27	105-8234-01	1	Rear Baffle ASM
28	105-6198-03	3	Stiffener-Blade
29	105-5884-01	1	Plate-Shelf, Right Rear
30	321-3	6	Screw-HH
31	32128-32	6	Nut-HHF
32	105-8230-01	1	Bottom Baffle ASM
33	105-5883-01	1	Plate-Shelf, Left Rear
34	322-2	5	Screw-HH
35	3296-29	2	Nut-Lock, NI
36	106-3318	1	Clamp-Hose
37	77-6710-03	1	Blade-Bagging