



Muffler Kit 100 Series Z Master

Part No. 105-3634

Part No. 105-3635

Part No. 105-3636

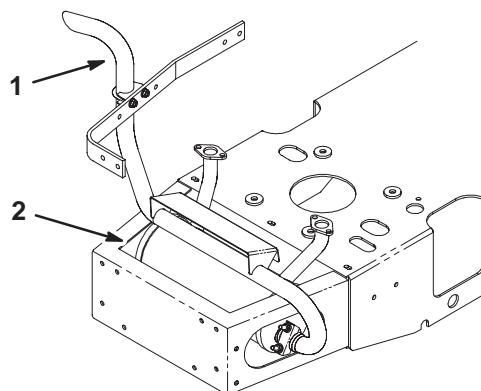
Form No. 3327-879

Installation Instructions

Important Your machine **must** have a tailpipe extension installed. See figure 1. If this tailpipe extension is not installed, contact an Authorized Service Dealer.

For a **domestic** machine, the tailpipe extension is in an Exhaust Kit, part number 105-9361.

For an **international** machine, the tailpipe extension is in an Exhaust Kit, part number 105-9371.



m-5842

Figure 1

1. Tailpipe extension

2. Muffler

Loose Parts

Note: Use the chart below to identify parts for assembly.

Description	Qty.	Use
Muffler	1	Installing the muffler
Gasket	2	



Warning



Components around engine will be hot if the machine has been running. Touching hot components can cause burns.

- Do not touch engine components when hot.
- Allow engine to cool before performing maintenance.

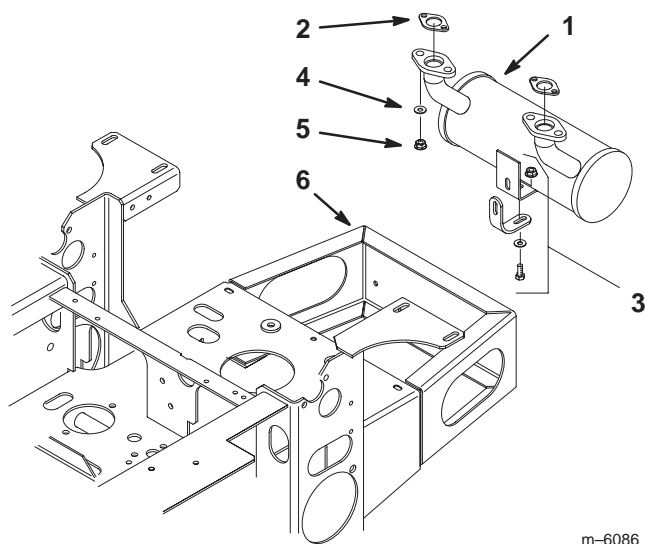
Installing the Muffler

1. Disengage the PTO and set the parking brake.
2. Stop the engine, remove the key, and wait for all moving parts to stop before leaving the operating position.
3. Allow the traction unit to **cool completely**.
4. Remove the tailpipe extension from the muffler (Fig. 1).

Note: The muffler must have the tailpipe extension. If needed, contact an Authorized Service Dealer to order the tailpipe extension (Fig. 1).

5. Remove the four nuts and lock washers securing the muffler to the studs on the engine. Save lock washers, nuts and lower support hardware (Fig. 2).
6. Remove the muffler from the lower support bracket (Fig. 2).
7. Remove the old muffler and gaskets from the engine, ensuring that you clean all pieces of the gaskets off of the engine exhaust manifold.
8. Slide the new gaskets over the studs on the engine (Fig. 2).
9. Install the new muffler on the studs on the engine, securing it tightly using the lock washers and nuts removed in step 5 (Fig. 2).
10. Install the tailpipe extension onto the muffler (Fig. 1).

Note: Make sure the tailpipe extension is **installed onto the muffler**.



m-6086

Figure 2

- | | |
|---|----------------|
| 1. Muffler | 4. Lock Washer |
| 2. Muffler Gaskets | 5. Nut |
| 3. Muffler Lower Support Bracket and Hardware | 6. Rear Bumper |