



44" Two Stage Snowthrower

5xi Garden Tractor

Model No. 79366-23000001 and Up

Parts Catalog

Ordering Replacement Parts

To order replacement parts, please supply: the part number, the quantity, and the description of each part desired.

Understanding Reference Numbers

Each identified part in an illustration has a reference number. The reference number for a part also appears in the parts list, along with other information about the part.

This catalog uses two special reference number formats, one to indicate parts in a service assembly and another to indicate the quantity of a given part in an illustration.

Service Assembly Reference Numbers

Parts in service assemblies have reference numbers in the form **a:b**. The **a** represents the reference number of the entire service assembly and the **b** represents a sequential number unique to each part within the service assembly.

For example, a wheel assembly might be identified by reference number **6**, the tire by **6:1**, the valve by **6:2**, and the wheel by **6:3**. When you order the assembly identified by reference number **6**, you receive all parts identified by reference numbers **6:1**, **6:2**, and **6:3**. However, you may also order any part individually.

Reference numbers of this type appear in illustrations and in part lists.

Reference Numbers Indicating Quantity

In an illustration, if a reference number indicates more than one part, the reference number has the form **nX y**. The **n** represents the quantity of the part, the **X** is the multiplication symbol, and the **y** represents the reference number.

For example, in an illustration, the reference number **2X 37** means that two of the parts identified by reference number **37** are indicated.

Contents

Description	Page	Description	Page
Discharge Chute Assembly	3	Crank Assembly	7
Jack Shaft Assembly	4	Mounting Assembly	8
Worm Gear Assembly	5	Maintenance	9-11
Pulley Box Assembly	6		

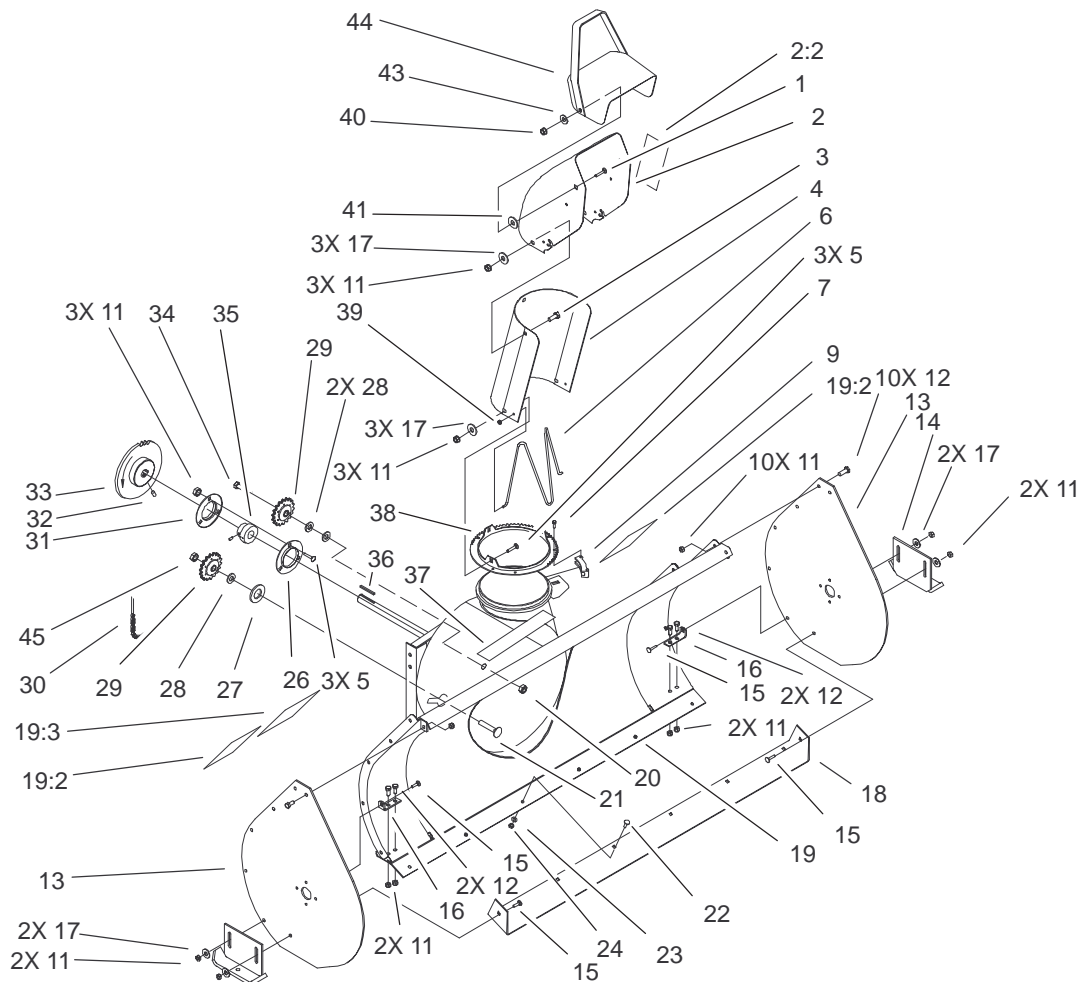
Accessories

Description	Model / Part No.	Description	Model / Part No.
-------------	------------------	-------------	------------------

Part Description Abbreviations

Part descriptions in this catalog may include the following abbreviations.

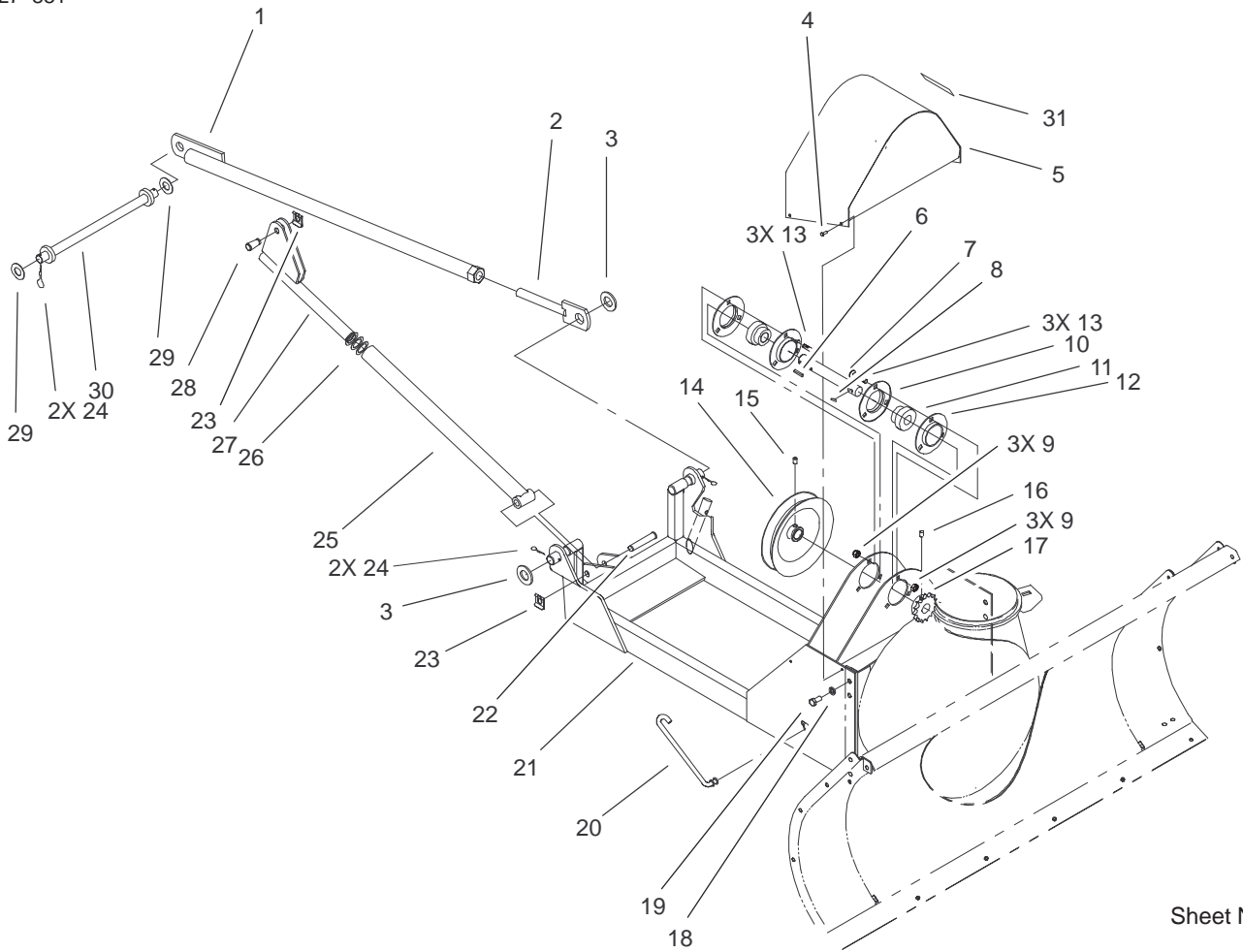
Abbreviation	Meaning	Abbreviation	Meaning
AR	as required	HYD	hydraulic
ASM	assembly	INC	incorporated
CARR	carriage	LH	left hand
DEG	degrees	NI	nylon insert
FH	flat head	PPH	Phillips pan head
GA	gauge	PTH	Phillips truss head
HF	hex flange	PTO	power take off
HH	hex head	RH	right hand
HHF	hex head flange	SFH	slotted fillister head
HLH	hex lag head	SHH	slotted hex head
HJ	hex jam	SQH	square head
HOC	height-of-cut	SHWH	slotted hex washer head
HS	hex socket	SPH	slotted pan head
HSBH	hex socket button head	SRH	slotted round head
HSFH	hex socket flat head	STD	standard
HSH	hex socket head	TAP	self tapping
HWH	hex washer head	TTH	Torx truss head
HWHTF	hex washer head thread forming	WH	wing head



Sheet No.:2

Discharge Chute Assembly

Ref. No.	Part No.	Qty.	Description	Ref. No.	Part No.	Qty.	Description
1	3231-2	2	Screw-CARR	24	3296-42	6	Nut-Lock NI
2	94-1832	1	Chute	26	110568	1	Flange
2:2	94-8079	1	Decal-Danger	27	3256-28	1	Washer-Flat
3	322-2	3	Screw-HH	28	3256-26	3	Washer-Flat
4	26-1110-01	1	Extender-Chute, Upper	29	93-1614	2	Idler Sprocket
5	3230-1	6	Screw-CARR	30	98-3098	1	Chain-Drive
6	12-2040	1	Wire-Chute	31	119020	1	Flange-Relube Zerk
7	27-0220	6	Screw-Special	32	909546	2	Screw-SQH Set
9	25-5450	3	Retainer-Chute	33	95-3867	1	Sprocket-38 Tooth
11	3296-29	27	Nut-Lock	34	325-7	1	Screw-HH
12	322-3	14	Screw-HH	35	110569	1	Bearing & Collar
13	57-3510-01	2	Plate-Side	36	6366	1	Key
14	78-0800-01	2	Support-Skid	37	106-5839	1	Decal-Attachment
15	3230-2	4	Screw-CARR	38	25-5290-01	1	Ring-Chute, Swivel
16	99-2304-01	2	Bracket-Blade Support	39	3290-326	2	Nut-Push
17	3256-23	10	Washer-Flat	40	3296-39	2	Nut-Lock, NI
18	99-2303-01	1	Blade-Scraper	41	20-4320	2	Washer-Rubber
19	100-8027	1	Auger Housing ASM	43	3290-340	2	Washer-Belleville
19:2	63-2380	2	Decal-Danger	44	11-7120-01	1	Deflector
19:3	92-8652	1	Decal-Warning	45	3296-23	1	Nut-Lock, NI
20	3218-5	1	Nut-Jam				
21	3233-4	1	Screw-CARR				
22	3229-25	6	Screw-CARR				
23	3256-22	6	Washer-Flat				

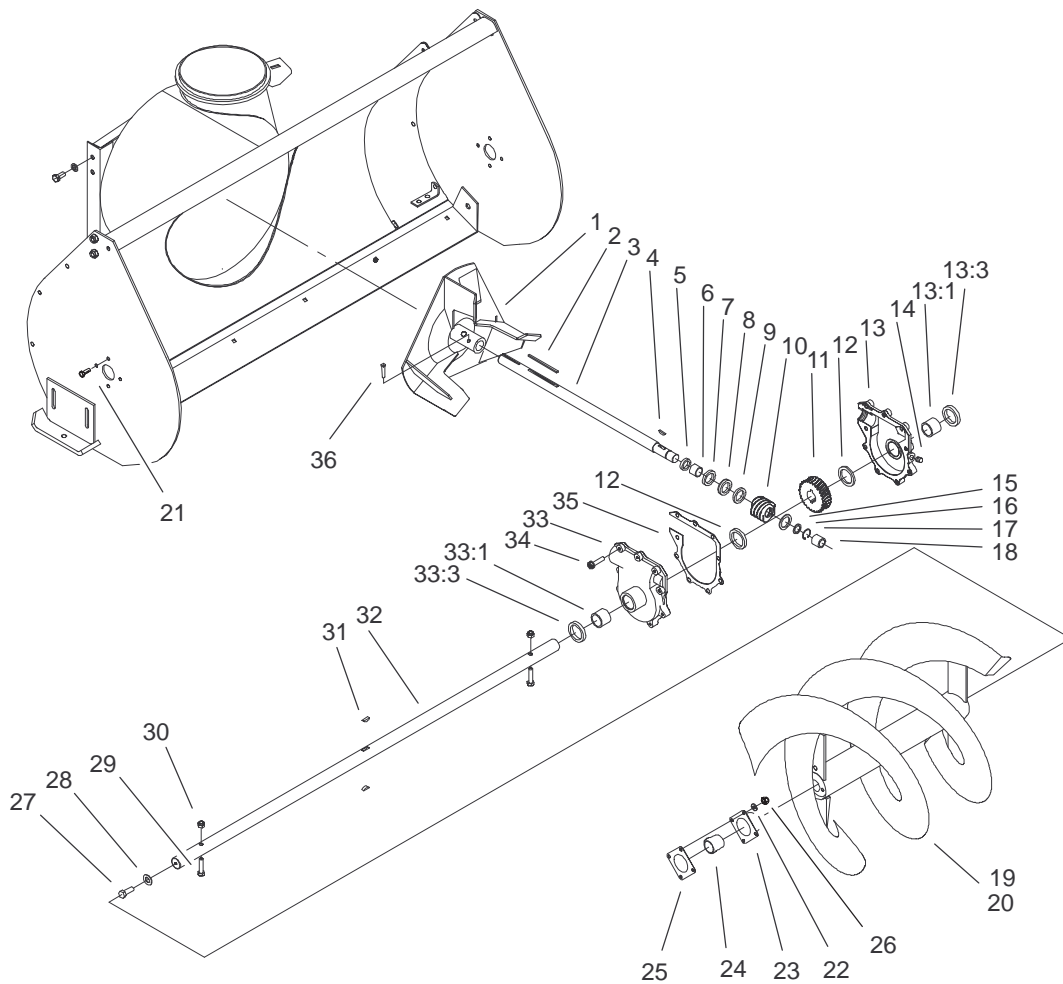


Sheet No.:3

Jack Shaft Assembly

Ref. No.	Part No.	Qty.	Description
1	95-3999-01	2	Brace ASM
2	95-4023-01	2	Adjuster ASM
3	3256-29	2	Washer-Flat
4	32144-1	4	Screw-Taptite
5	95-3859-01	1	Pulley Cover ASM
6	6366	1	Key
7	95-3836	1	Shaft - Jack
8	937221	1	Key-Hi Pro
9	3296-29	6	Nut-Lock
10	119020	2	Flange-Relube Zerk
11	110569	2	Bearing & Collar
12	110568	2	Flange
13	3230-1	6	Screw-CARR
14	94-7841	1	Pulley-Drive
15	3242-2	2	Screw-SQH
16	3241-5	2	Screw-Set
17	117338	1	Sprocket-15t
18	3253-5	6	Washer-Lock
19	323-4	6	Screw-HH
20	99-6455	1	Link-Spring Tension
21	95-3848-01	1	Frame ASM
22	98-1640	1	Pin-Clevis
23	95-4064	2	Clip-Pin
24	9335064	4	Pin-Hair
25	100-5022-01	1	Rod-Lift
26	3256-62	5	Washer-Flat

Ref. No.	Part No.	Qty.	Description
27	94-7671-01	1	Yoke
28	98-1639	1	Pin-Clevis
29	3256-28	2	Washer-Flat
30	95-3993-01	1	Link ASM
31	98-8705	1	Decal-Important



Sheet No.:4

Worm Gear Assembly

Ref. No.	Part No.	Qty.	Description	Ref. No.	Part No.	Qty.	Description
1	19-8890-01	1	Impeller	24	20-0980	2	Bearing
2	6-8590	1	Key	25	20-1000	2	Bearing-Flange, Rear
3	19-8540	1	Shaft-Impeller	26	3296-42	8	Nut-Lock NI
4	3257-23	1	Key-Woodruff	27	3235-22	2	Screw-HH
5	237-87	1	Ring-Quad	28	2844	2	Washer
6	20-3210	1	Bushing-Special	29	322-14	2	Screw-HH
7	252-78	1	Bearing-Thrust	30	3296-29	2	Nut-Lock
8	252-76	1	Bearing-Thrust	31	3257-33	2	Key-Woodruff
9	252-77	1	Thrust-Washer	32	57-3500	1	Shaft-Auger
10	5-7170	1	Gear	33	37-8850	1	RH Gear Case/Bushing ASM
11	5-7180	1	Gear-Worm 21t	33:1	256-237	1	Bushing
12	252-71	2	Bearing-Thrust	33:3	7-0045	1	Seal-Oil
13	37-8860	1	LH Gear Case/Bushing ASM	34	32144-41	8	Screw-Taptite
13:1	256-237	1	Bushing	35	92-9839	1	Gasket-Gear Box
13:3	7-0045	1	Seal-Oil	36	3242-6	2	Screw-Set, SQH
14	281-1	1	Plug-Pipe, SQH				
15	3-8664	1	Washer-Thrust				
16	5210	1	Washer-Shim				
17	32120-72	1	Ring-Snap				
18	256-32	1	Bushing				
19	57-3300-01	1	Auger, RH				
*20	57-3370-01	1	Auger, LH				
21	321-4	8	Screw-HH				
22	3256-22	8	Washer-Flat				
23	20-0990	2	Bearing-Flange, Front				

* Not illustrated

