



52in Side Discharge Mower

XT Series Garden Tractor

Model No. 78294-230000001 and Up

Parts Catalog

Ordering Replacement Parts

To order replacement parts, please supply: the part number, the quantity, and the description of each part desired.

Understanding Reference Numbers

Each identified part in an illustration has a reference number. The reference number for a part also appears in the parts list, along with other information about the part.

This catalog uses two special reference number formats, one to indicate parts in a service assembly and another to indicate the quantity of a given part in an illustration.

Service Assembly Reference Numbers

Parts in service assemblies have reference numbers in the form **a:b**. The **a** represents the reference number of the entire service assembly and the **b** represents a sequential number unique to each part within the service assembly.

For example, a wheel assembly might be identified by reference number **6**, the tire by **6:1**, the valve by **6:2**, and the wheel by **6:3**. When you order the assembly identified by reference number **6**, you receive all parts identified by reference numbers **6:1**, **6:2**, and **6:3**. However, you may also order any part individually.

Reference numbers of this type appear in illustrations and in part lists.

Reference Numbers Indicating Quantity

In an illustration, if a reference number indicates more than one part, the reference number has the form **nX y**. The **n** represents the quantity of the part, the **X** is the multiplication symbol, and the **y** represents the reference number.

For example, in an illustration, the reference number **2X 37** means that two of the parts identified by reference number **37** are indicated.

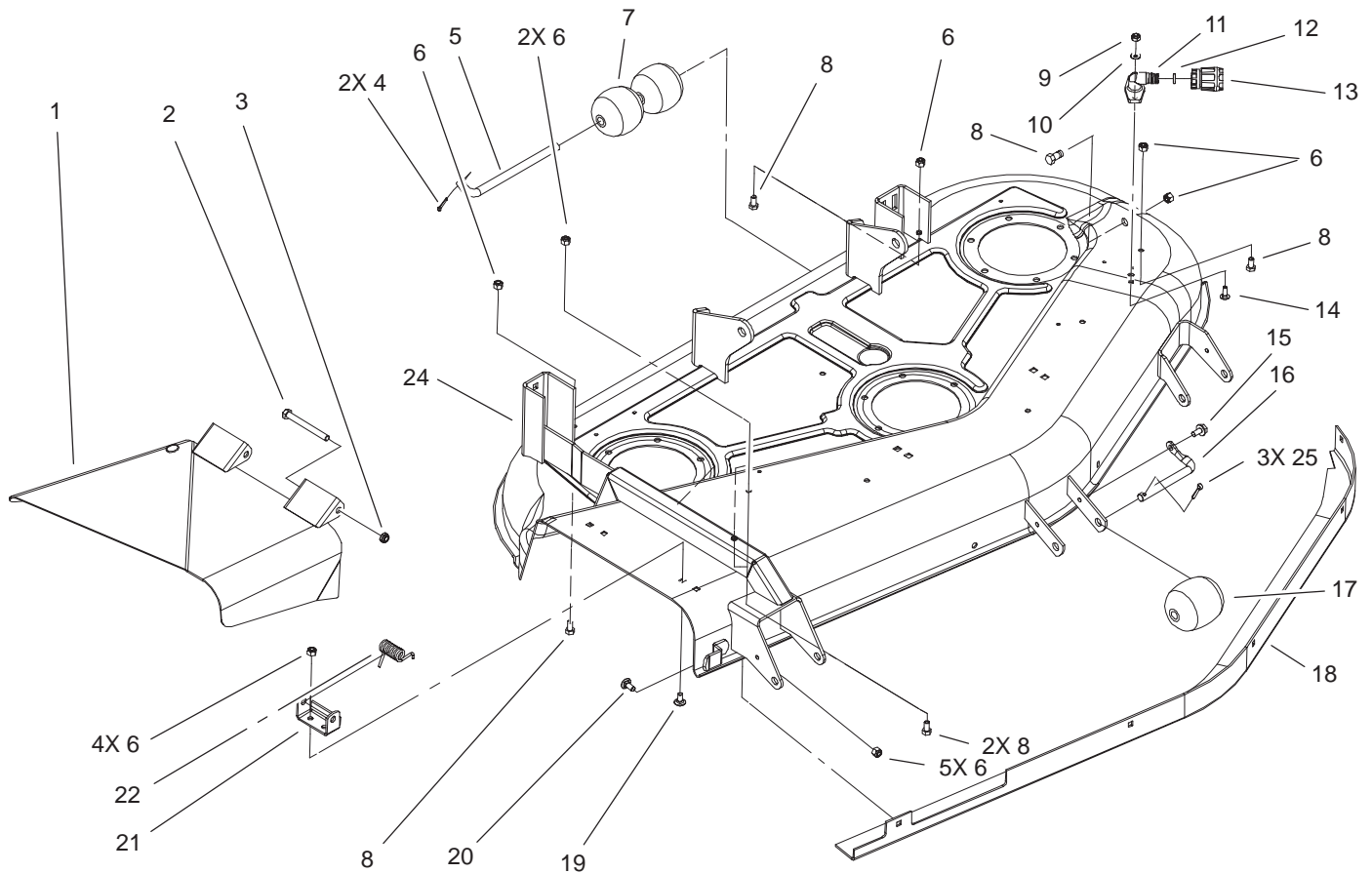
Contents

Description	Page	Description	Page
Roller and Baffle Assembly	3	Pulley Box Assembly	6
Spindle and Blade Assembly	4	Decal Assembly	7
Deck Suspension Assembly	5		

Part Description Abbreviations

Part descriptions in this catalog may include the following abbreviations.

Abbreviation	Meaning	Abbreviation	Meaning
AR	as required	HYD	hydraulic
ASM	assembly	INC	incorporated
CARR	carriage	LH	left hand
DEG	degrees	NI	nylon insert
FH	flat head	PPH	Phillips pan head
GA	gauge	PTH	Phillips truss head
HF	hex flange	PTO	power take off
HH	hex head	RH	right hand
HHF	hex head flange	SFH	slotted fillister head
HLH	hex lag head	SHH	slotted hex head
HJ	hex jam	SQH	square head
HOC	height-of-cut	SHWH	slotted hex washer head
HS	hex socket	SPH	slotted pan head
HSBH	hex socket button head	SRH	slotted round head
HSFH	hex socket flat head	STD	standard
HSH	hex socket head	TAP	self tapping
HWH	hex washer head	TTH	Torx truss head
HWHTF	hex washer head thread forming	WH	wing head

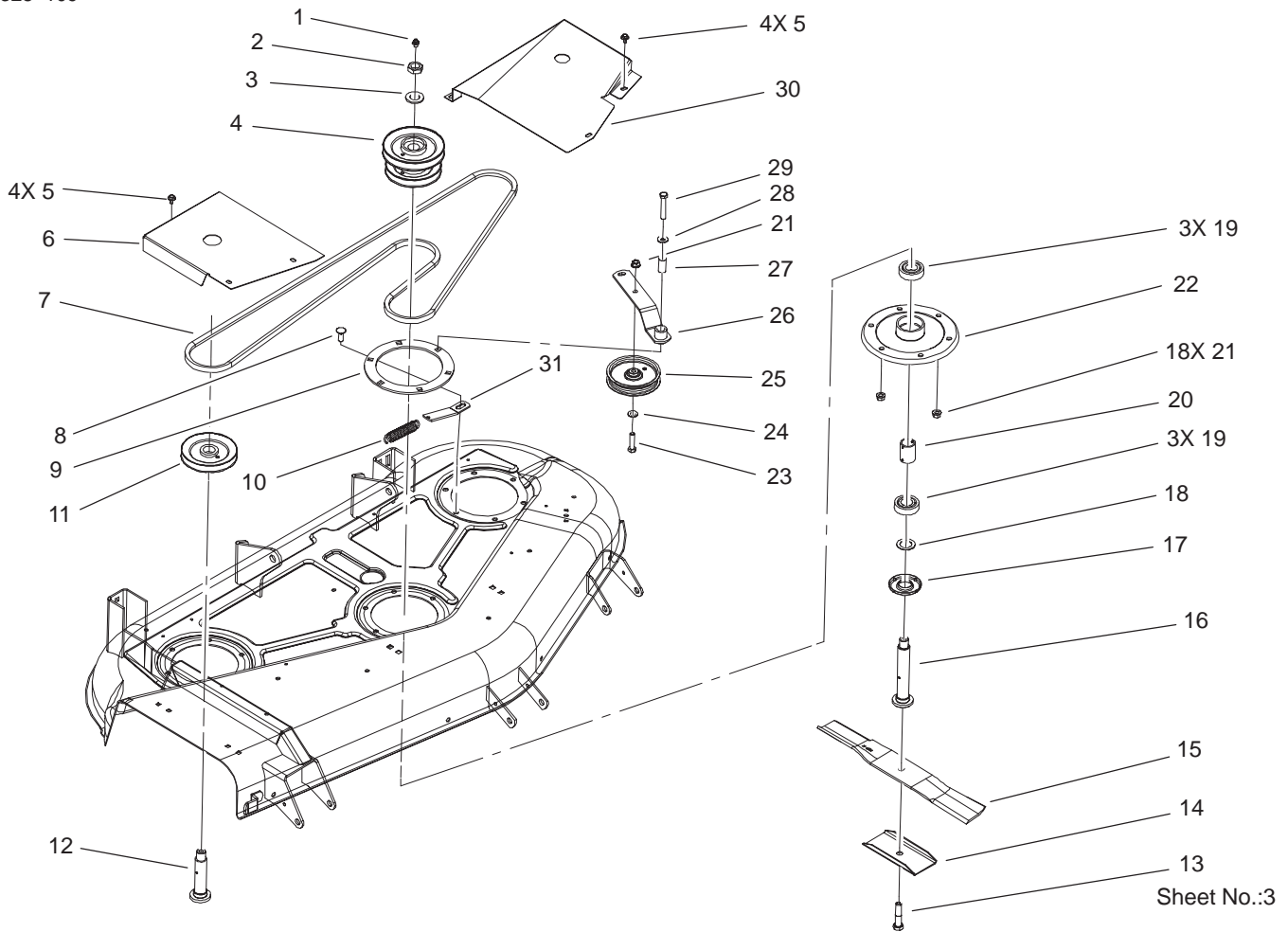


Sheet No.:2

Roller and Baffle Assembly

Ref. No.	Part No.	Qty.	Description
1	94-1580	1	Deflector ASM
1:1	92-7108	1	Decal-Danger
1:2	93-1122	1	Decal-Danger
2	3211-15	2	Screw-HH
3	3296-5	2	Nut-Lock, NI
4	3272-11	2	Pin-Cotter
5	40-0340	2	Shaft-Roller, Rear
6	3296-29	15	Nut-Lock, NI
7	29-4820	4	Roller
8	322-2	6	Screw-HH
15	32144-14	3	Screw-HWH
16	110847-03	3	Shaft-Roller
17	94-1599	3	Roller
18	67-2150-01	1	Baffle
19	3230-18	4	Screw-CARR
20	3230-1	5	Bolt-CARR
21	29-5590-03	2	Bracket-Pivot
22	40-6230	2	Spring
24	106-5802	1	52in Deck/Decal ASM
24:2	92-7109	1	Decal-Caution
24:3	92-7108	2	Decal-Danger
24:4	3296-16	2	Nut-Lock, NI
24:5	3256-1	2	Washer-Flat
24:6	95-2747	1	Fitting-Washout
24:7	46-6290	1	O-Ring
24:8	3229-1	2	Screw-CARR

Ref. No.	Part No.	Qty.	Description
24:9	95-3270	1	Connector-Hose
25	3272-21	3	Pin-Cotter

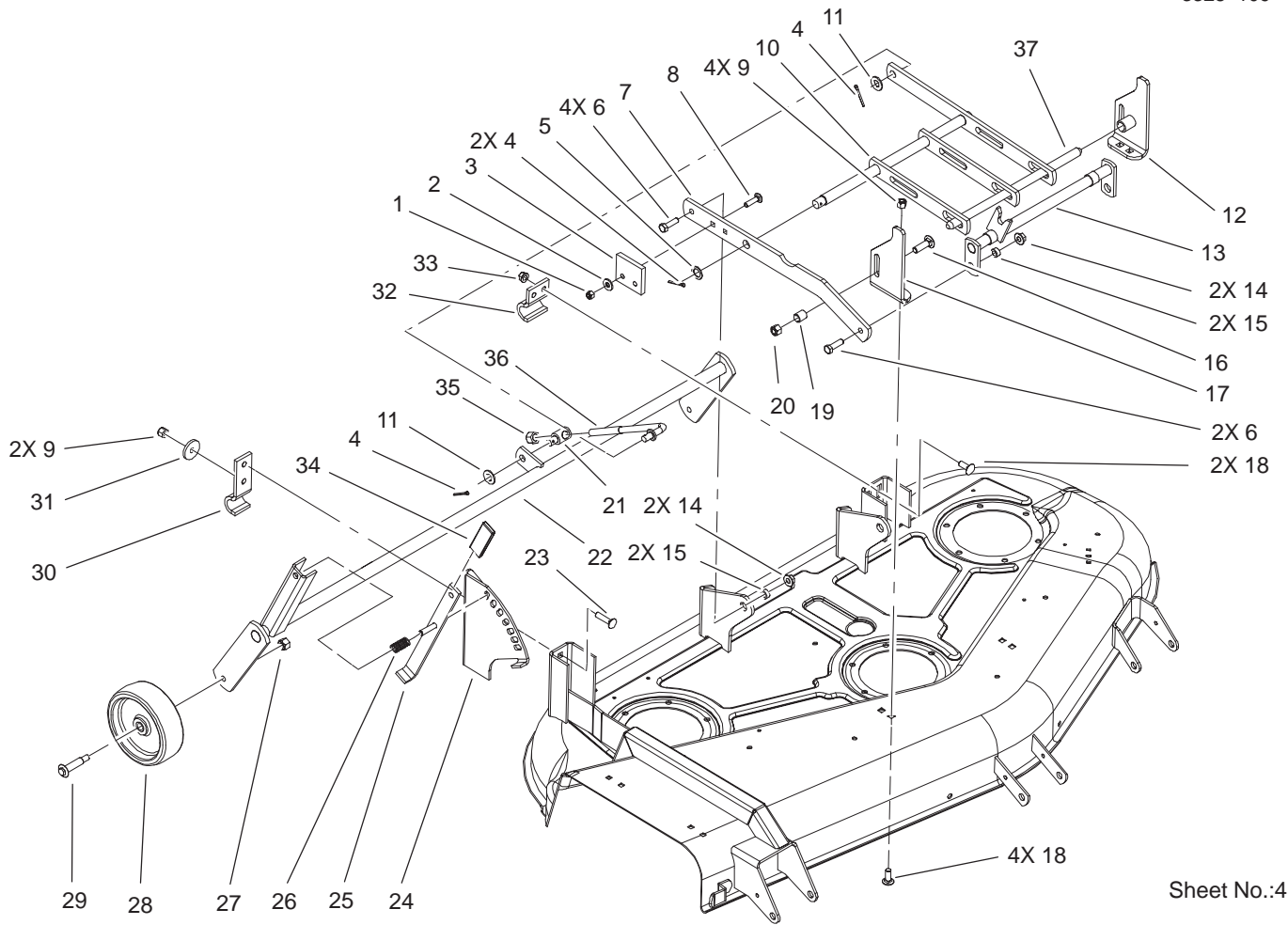


Sheet No.:3

Spindle and Blade Assembly

Ref. No.	Part No.	Qty.	Description
1	302-2	3	Fitting-Grease
2	3220-7	3	Nut-Jam
3	3256-28	3	Washer-Flat
4	106-1793	1	Pulley-Double,52"
5	46-8560	8	Screw-Hhfff
6	106-5607-01	1	Cover-Belt,RH
7	94-2501	1	V-Belt
8	3231-22	17	Screw-CARR
9	27-7680-03	3	Ring-Deck Support
10	51-3650	1	Spring-Extension
11	79-0620	2	Pulley
12	79-1900	2	Shaft-Spindle
13	44-2200	3	Screw-Blade
14	92-9820	3	Stiffener-Blade
15	27-0990	3	Blade
16	79-1910	1	Shaft-Spindle
17	79-1920	3	Shield-Bearing
18	120860	3	Washer-Wheel
19	113514	6	Bearing - Ball
20	79-1890	3	Spacer-Bearing
21	32128-21	19	Nut-HF
22	79-2480-03	3	Housing-Spindle
23	323-8	1	Screw-HH
24	3256-24	1	Washer-Flat
25	93-1622	1	Pulley-Idler
26	55-7640-03	1	Idler Arm ASM

Ref. No.	Part No.	Qty.	Description
27	51-3640	1	Sleeve
28	3256-3	1	Washer-Flat
29	323-11	1	Screw-HH
30	98-1619-01	1	Cover ASM-LH
31	55-7650	1	Plate-Spring

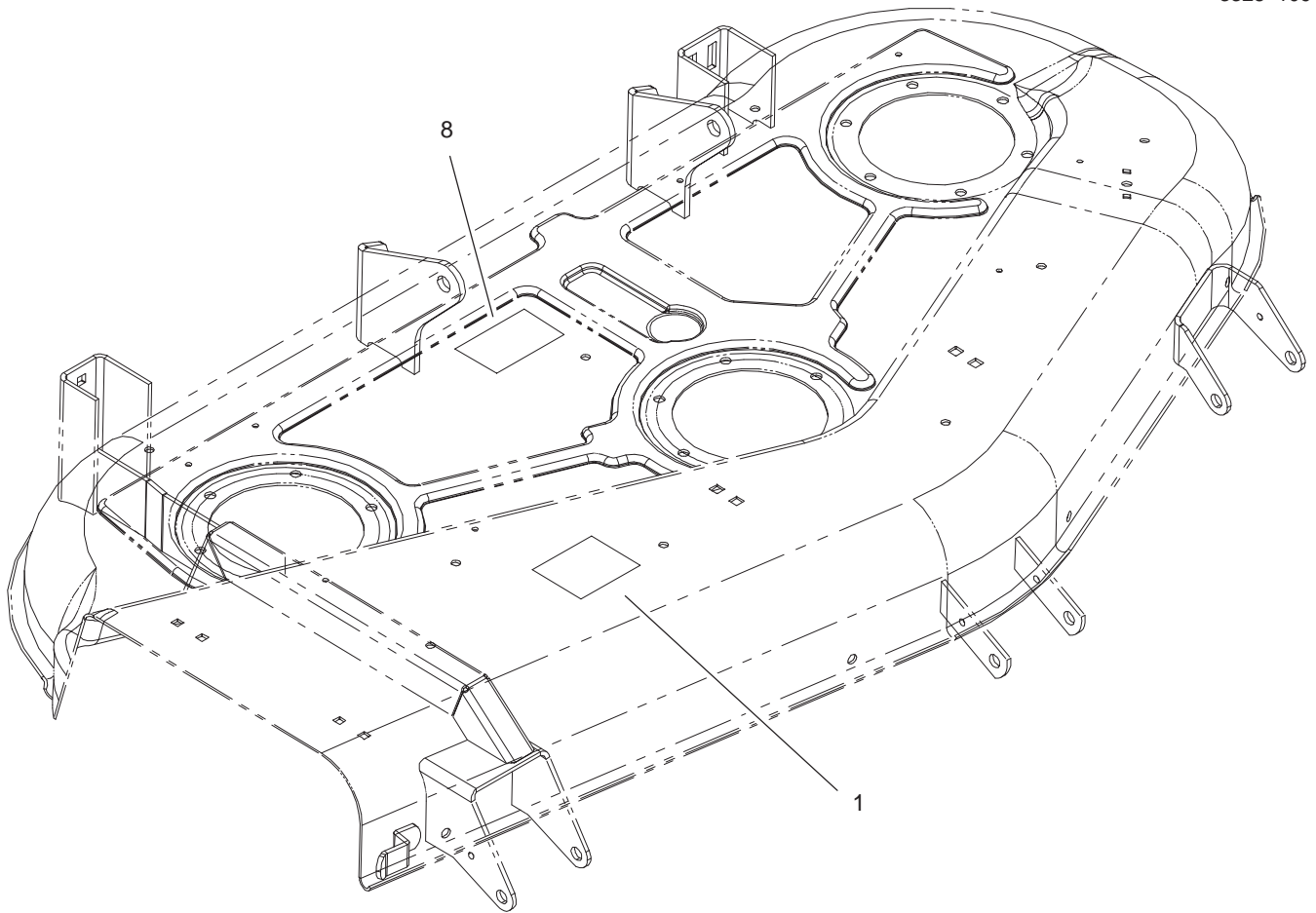


Sheet No.:4

Deck Suspension Assembly

Ref. No.	Part No.	Qty.	Description
1	3296-29	4	Nut-Lock, NI
2	3256-3	4	Washer-Flat
3	102322	2	Bumper
4	3272-12	4	Pin-Cotter
5	3256-69	2	Washer-Flat
6	323-7	4	Screw-HH
7	106-5641-03	2	Bar-Draft
8	3230-3	4	Screw-CARR
9	3296-39	6	Nut-Lock, NI
10	92-0981-03	1	Bar-Leveler
11	3256-26	2	Washer-Flat
12	106-1764-03	1	Bracket ASM-Front Deck, LH
13	106-5644-03	1	Hitch ASM
14	102809	4	Locknut-Flange
15	114127	4	Spacer
16	3232-3	2	Screw-CARR
17	106-1765-03	1	Bracket ASM-Front Deck, RH
18	3231-2	6	Screw-CARR
19	9793604	2	Spacer
20	3296-48	2	Nut-Lock, NI
21	94-7802	1	Trunnion
22	106-1774-01	1	Whl Supp ASM
23	3231-4	2	Screw-CARR
24	106-1798-01	1	Quadrant-52 In. Deck

Ref. No.	Part No.	Qty.	Description
25	94-7965-01	1	Lever-HOC
26	101853	1	Spring-Compression
27	32146-2	2	Nut-Lock, Nyl-Patch
28	95-4102	2	Wheel
29	92-1057	2	Bolt-Shoulder
30	110837-03	1	Bracket-Pivot
31	98-3479	1	Washer-Support
32	94-7543-03	1	Clamp
33	32128-40	2	Nut-Flange
34	102597	1	Grip
35	3296-23	1	Nut-Lock, NI
36	106-1789	1	Rod-Adjusting
37	102570-03	1	Shaft-Front
38	111655	1	Decal-HOC



Sheet No.:6

Decal Assembly

Ref. No.	Part No.	Qty.	Description
1	106-5801	1	Decal-Belt Routing (PTO)
8	98-3480	1	Decal-Belt Routing

Ref. No.	Part No.	Qty.	Description

