



416 XT

Garden Tractor

Model No. 72200-230000001 and Up

Parts Catalog

Ordering Replacement Parts

To order replacement parts, please supply: the part number, the quantity, and the description of each part desired.

Understanding Reference Numbers

Each identified part in an illustration has a reference number. The reference number for a part also appears in the parts list, along with other information about the part.

This catalog uses two special reference number formats, one to indicate parts in a service assembly and another to indicate the quantity of a given part in an illustration.

Service Assembly Reference Numbers

Parts in service assemblies have reference numbers in the form **a:b**. The **a** represents the reference number of the entire service assembly and the **b** represents a sequential number unique to each part within the service assembly.

For example, a wheel assembly might be identified by reference number **6**, the tire by **6:1**, the valve by **6:2**, and the wheel by **6:3**. When you order the assembly identified by reference number **6**, you receive all parts identified by reference numbers **6:1**, **6:2**, and **6:3**. However, you may also order any part individually.

Reference numbers of this type appear in illustrations and in part lists.

Reference Numbers Indicating Quantity

In an illustration, if a reference number indicates more than one part, the reference number has the form **nX y**. The **n** represents the quantity of the part, the **X** is the multiplication symbol, and the **y** represents the reference number.

For example, in an illustration, the reference number **2X 37** means that two of the parts identified by reference number **37** are indicated.

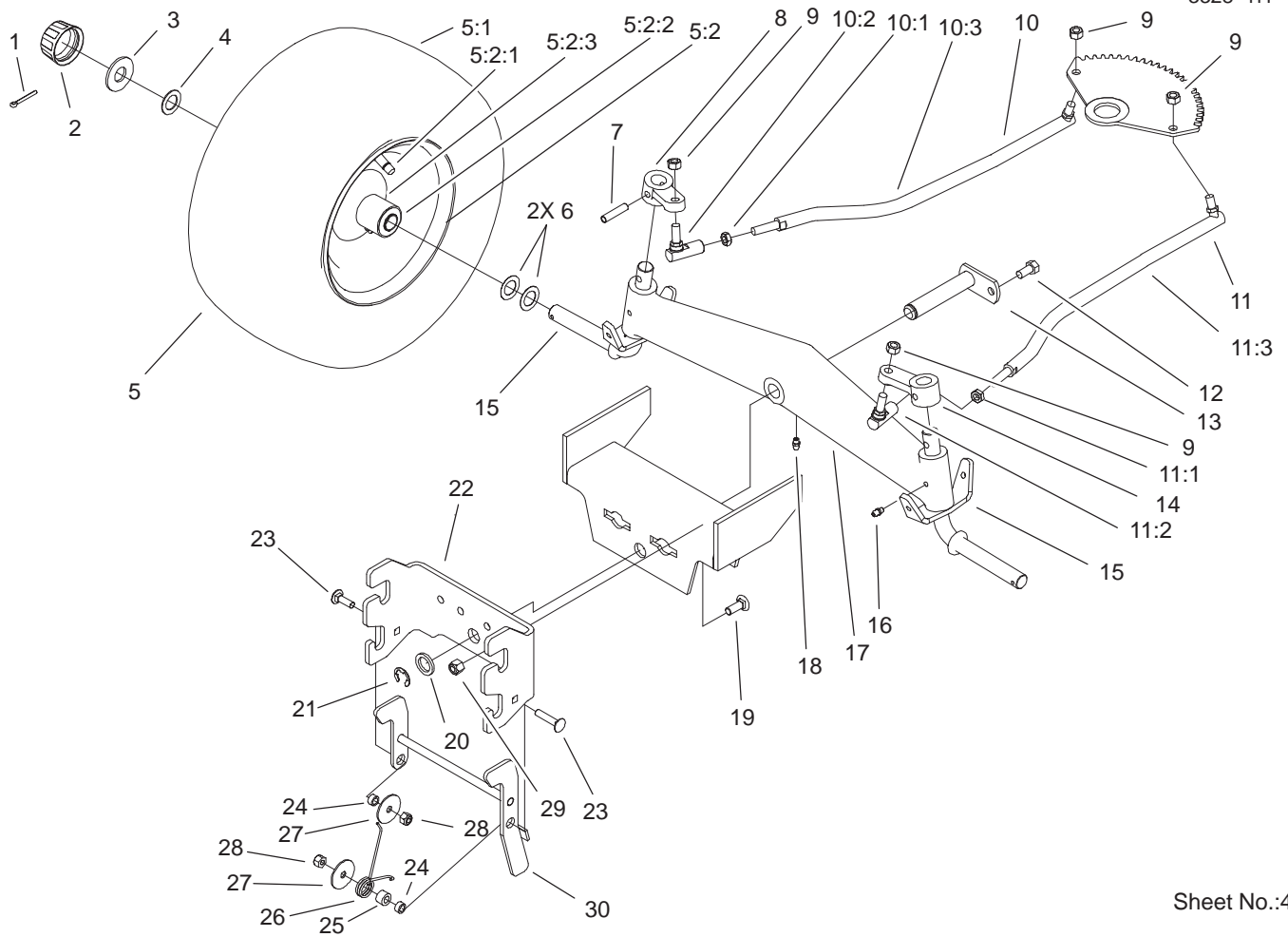
Contents

Description	Page	Description	Page
Hood and Grill Assembly	3	Rear Wheel Assembly	21
Hydro Drive Assembly	4	Housing and Fan Assembly	22
Front Axle and Front Hitch Assembly	5	Differential Gear Assembly	23
Single Cylinder Engine, Muffler and PTO Assembly	6	Brake Assembly	24
Battery Assembly	7	Cylinder Block Assembly	25
Fuel Tank Assembly	8	Electrical Schematic	26
Lower Steering Wheel and Tilt Assembly	9	Group 1—Crankshaft Assembly	27
Steering Wheel and Tilt Assembly	10	Group 2—Crankcase Assembly	28
Hoodstand and Firewall Assembly	11	Group 3—Oil Pan/Lubrication Assembly	29
Manual Lift Lever Assembly	12	Group 4—Head/Valve/Breather Assembly	30
Electric Lift Assembly	13	Group 5—Ignition/Electrical Assembly	31
Brake Assembly	14	Group 6—Blower Housing Assembly	32
Hydro Control Assembly	15	Group 7—Starter Assembly	33
Frame Assembly	16	Group 8—Fuel System Assembly	34
Hydro Transaxle Assembly	17	Group 8—Fuel System Assembly (continued) ...	35
Fender and Footrest Assembly	18	Group 9—Engine Control Assembly	36
Seat Assembly	19	Group 10—Air Intake/Filtration Assembly	37
Dash Assembly	20	Group 11—Exhaust Assembly	38

Part Description Abbreviations

Part descriptions in this catalog may include the following abbreviations.

Abbreviation	Meaning	Abbreviation	Meaning
AR	as required	HYD	hydraulic
ASM	assembly	INC	incorporated
CARR	carriage	LH	left hand
DEG	degrees	NI	nylon insert
FH	flat head	PPH	Phillips pan head
GA	gauge	PTH	Phillips truss head
HF	hex flange	PTO	power take off
HH	hex head	RH	right hand
HHF	hex head flange	SFH	slotted fillister head
HLH	hex lag head	SHH	slotted hex head
HJ	hex jam	SQH	square head
HOC	height-of-cut	SHWH	slotted hex washer head
HS	hex socket	SPH	slotted pan head
HSBH	hex socket button head	SRH	slotted round head
HSFH	hex socket flat head	STD	standard
HSH	hex socket head	TAP	self tapping
HWH	hex washer head	TTH	Torx truss head
HWHTF	hex washer head thread forming	WH	wing head



Sheet No.:4

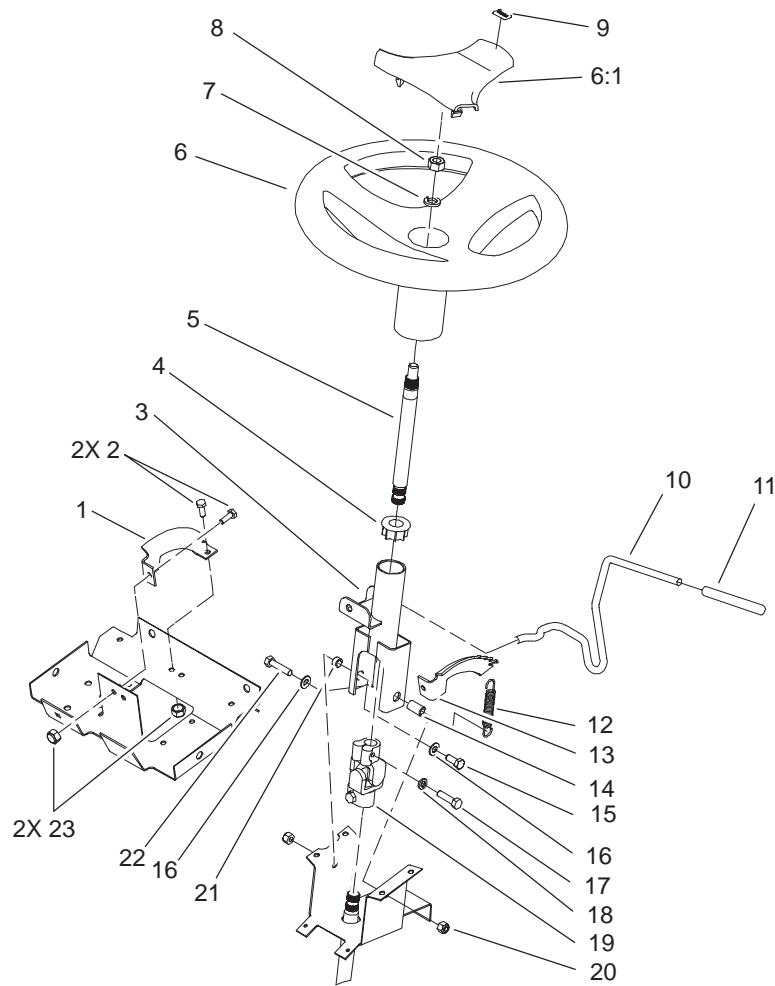
Front Axle and Front Hitch Assembly

Ref. No.	Part No.	Qty.	Description
1	3272-17	2	Pin-Cotter
2	61-9780	2	Cap-Hub
3	28-2480	2	Washer
4	1278	2	Washer
☆5		2	Front Wheel & Tire ASM
5:1	99-2336	1	Tire
5:2	93-9801	1	Wheel ASM
5:2:1	5108	1	Valve
5:2:2	110513	2	Bearing-Wheel
5:2:3	109500	1	Zerk-Grease
*	105293	1	Tube-Inner
6	5210	4	Washer-Shim
7	933270	2	Pin
8	78-1950-03	1	Arm-Front Spindle
9	9150026	4	Nut
10	92-6883	1	Linkage-Steering, RH
10:1	9150854	1	Nut-Jam
10:2	78-2920	1	Ball-Joint
10:3	78-5801	1	Ball Link ASM
11	92-6884	1	Linkage-Steering, LH
11:1	9150854	1	Nut-Jam
11:2	78-2920	1	Ball-Joint
11:3	78-5811	1	Ball Link ASM
12	9267154	1	Screw
13	92-7057-03	1	Pin-Axle

Ref. No.	Part No.	Qty.	Description
14	78-1940-03	1	Arm-Front Spindle
15	78-2601-03	2	Spindle
16	302-5	2	Fitting-Grease
17	78-7960-03	1	Axle-Front
18	302-11	1	Fitting-Lube, 45°
19	3231-25	4	Screw-CARR
20	9202324	1	Washer
21	5618	1	E-Ring
22	106-4044-03	1	Hitch-Front
23	3230-4	2	Screw-CARR
24	92-6998	2	Spacer-Yoke, Right
25	98-4695	1	Spacer
26	106-4048	1	Spring-Torsion
27	3256-68	2	Washer-Flat
28	3296-29	2	Nut-Lock, NI
29	3296-39	4	Nut-Lock, NI
30	106-5637-03	1	Latch ASM

☆ Not serviced separately

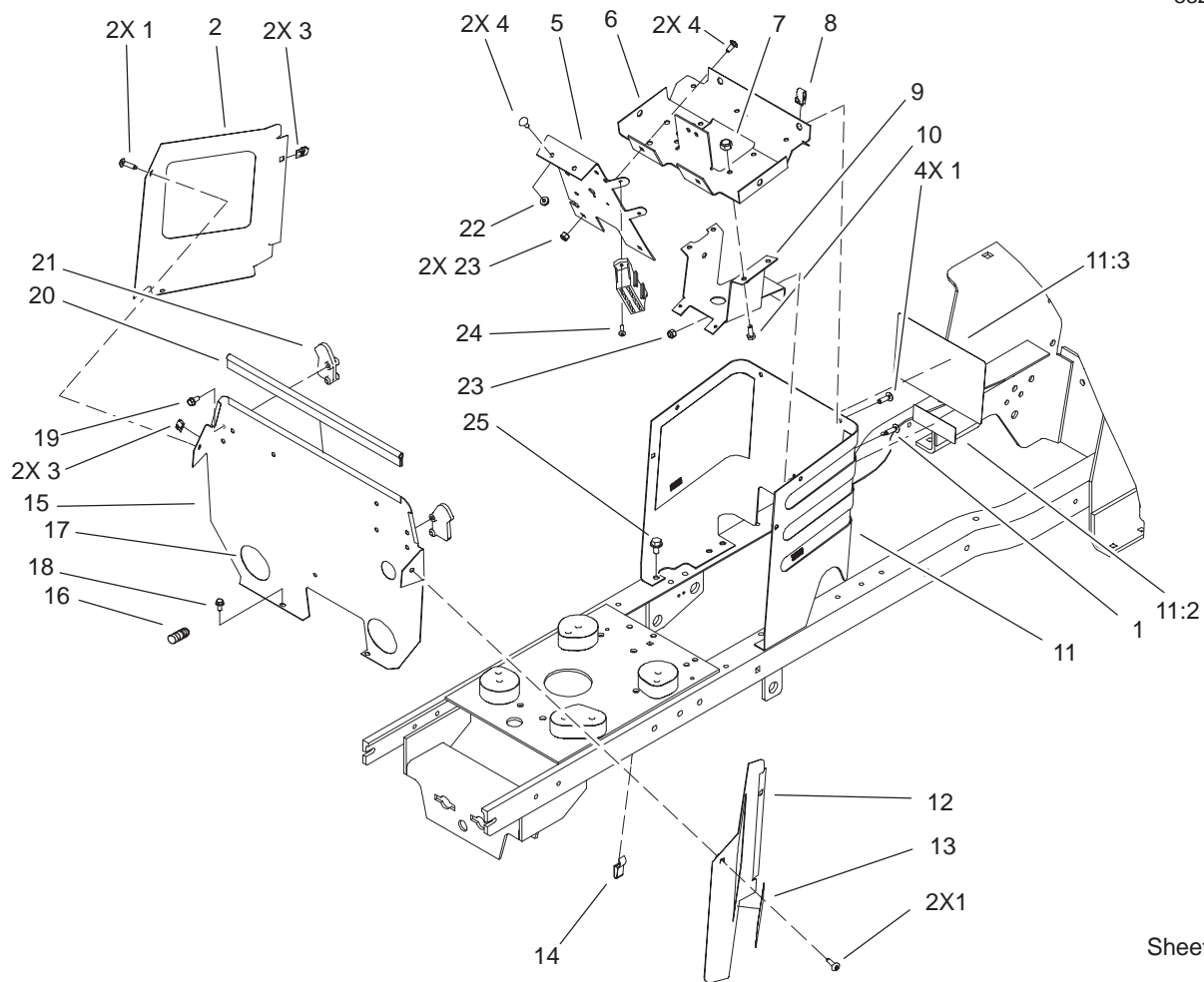
* Not illustrated



Sheet No.:10

Steering Wheel and Tilt Assembly

Ref. No.	Part No.	Qty.	Description	Ref. No.	Part No.	Qty.	Description
1	92-6777-03	1	Bracket - Support Column	22	322-17	1	Screw-HH
2	321-4	4	Screw-HH	23	3296-8	4	Nut-Lock, NI
3	93-1148-03	1	Column				
4	93-1146	1	Bushing-Upper, Steering				
5	94-2874	1	Shaft-Short, Steering				
6	98-1471	1	Wheel-Steering				
6:1	98-1468	1	Cover-Wheel, Steering				
7	3253-7	1	Washer-Lock				
8	3217-9	1	Nut-Hex				
9	98-1459	1	Decal				
10	92-6971	1	Lever - Tilt				
11	92-6798	1	Cap-Rod, Tilt				
12	93-1357	1	Spring - Extension, Steering				
13	92-6776	1	Bracket - Detent				
14	92-6999	1	Spacer-Yoke				
15	322-3	1	Screw-HH				
16	3256-23	2	Washer-Flat				
17	33114-030	2	Screw-HH				
18	3253-4	2	Washer-Lock				
19	92-6717	1	U Joint - Steering				
20	3296-29	2	Nut-Lock, NI				
21	92-6998	1	Spacer-Yoke, Right				

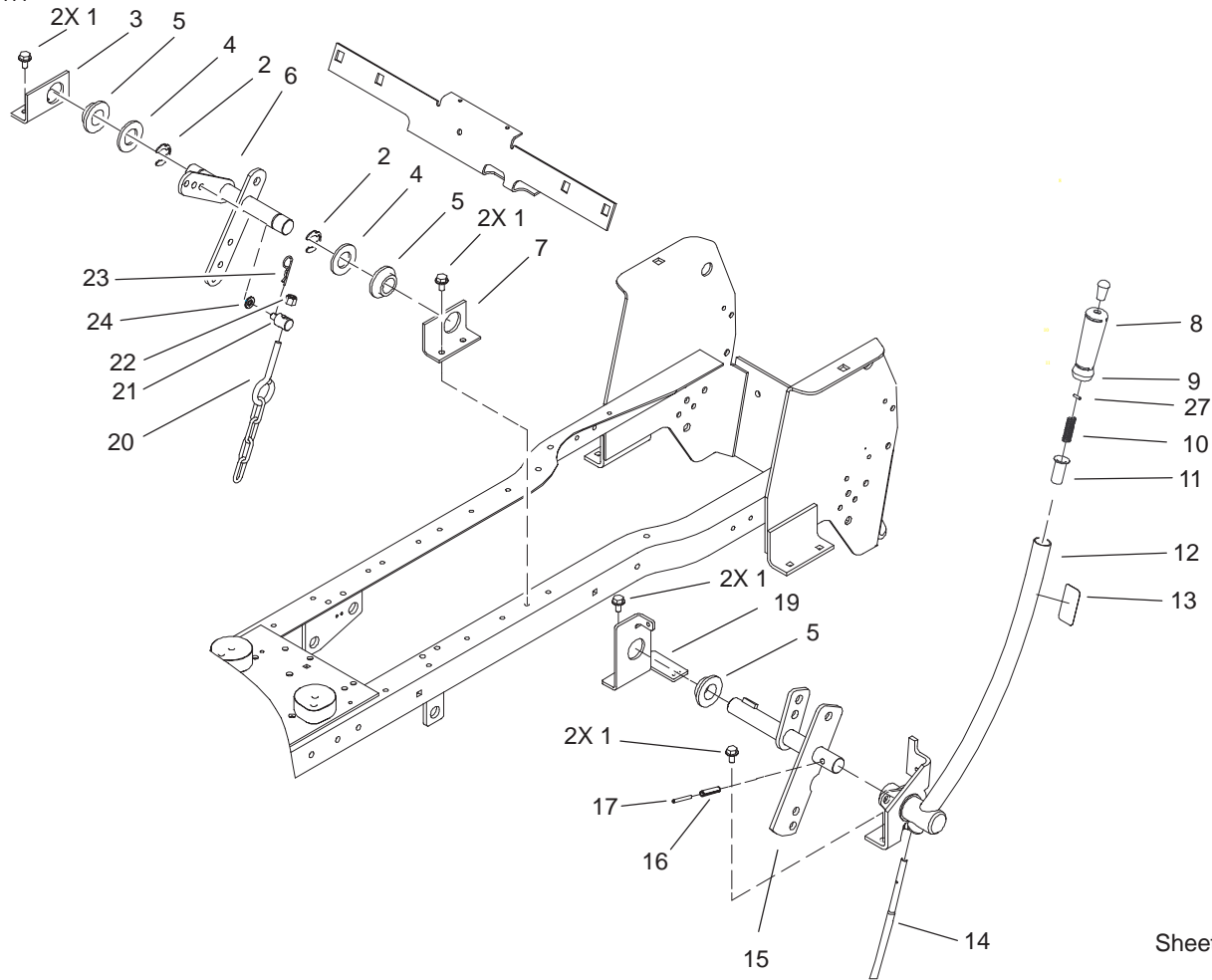


Sheet No.:11

Hoodstand and Firewall Assembly

Ref. No.	Part No.	Qty.	Description
1	92-7020	9	Screw-HH
2	92-6937-03	1	Cover-RH Side
3	92-7006	4	Nut
4	3229-11	4	Screw-CARR
5	106-8246-03	1	Panel-Support, Dash
6	92-6859-03	1	Support - Dash
7	3296-8	4	Nut-Lock, NI
8	107069	4	Clip
9	92-6778-03	1	Bracket-Lower Column
10	321-4	4	Screw-HH
11	106-5576	1	Hoodstand W/Decals ASM
11:2	83-6620	1	Decal - Instruction
11:3	93-0302	1	Decal - Danger
12	92-6936-03	1	Cover-LH Side
13	106-5816	2	Decal-416 Xt
14	212-93	1	Clamp-Casing
15	104-0818-03	1	Firewall
16	106-4146	1	Harness-Wire, 416xt
17	24-7924	2	Cover-Drive Shaft
18	32144-4	2	Screw-HWH
19	46-8093	2	Screw-Plastite
20	93-1131	1	Trim-Seal Firewall
21	92-6960	2	Latch - Hood
22	32149-2	2	Nut

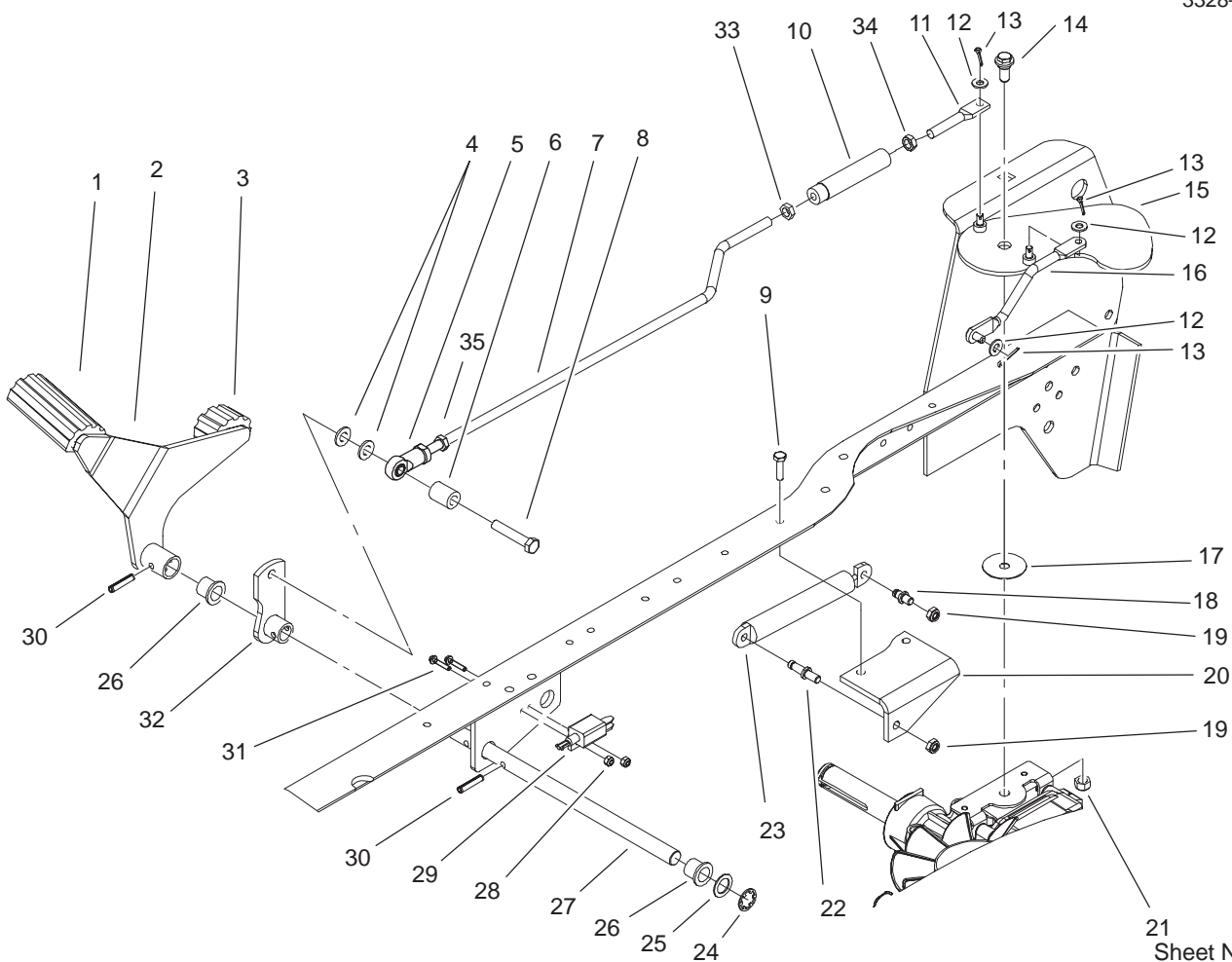
Ref. No.	Part No.	Qty.	Description
23	3296-42	3	Nut-Lock, NI
24	32144-8	2	Screw-HH
25	32144-14	2	Screw-HWH



Manual Lift Lever Assembly

Ref. No.	Part No.	Qty.	Description
1	32144-14	8	Screw-HWH
2	32151-91	2	Ring-Retaining
3	106-5650-03	1	Bracket-Pivot Linkage, RH
4	3256-62	2	Washer-Flat
5	106269	3	Bearing-Flange
6	106-5660-03	1	Lift Lever ASM
7	106-5652-03	1	Bracket-Pivot Linkage, LH
8	92-6711	1	Tip - Rod
9	92-6710	1	Grip-Handle
10	3624	1	Spring-Compression
11	8130	1	Retainer-Spring
12	106-5663-03	1	Lift Lever ASM,
13	112168	1	Decal-Lift
14	92-6977-03	1	Rod - Lift Lever
15	106-5656-03	1	Lift Arm ASM
16	32121-25	1	Pin-Roll
17	32121-103	1	Pin-Spring
19	106-4073-03	1	Bracket-Pivot, Lift
20	106522	1	Chain-Lift
21	79-2790	1	Trunnion
22	3296-39	1	Nut-Lock, NI
23	9335054	1	Pin-Hair
24	3256-24	1	Washer-Flat
27	933148	1	Pin-Spirol

Ref. No.	Part No.	Qty.	Description

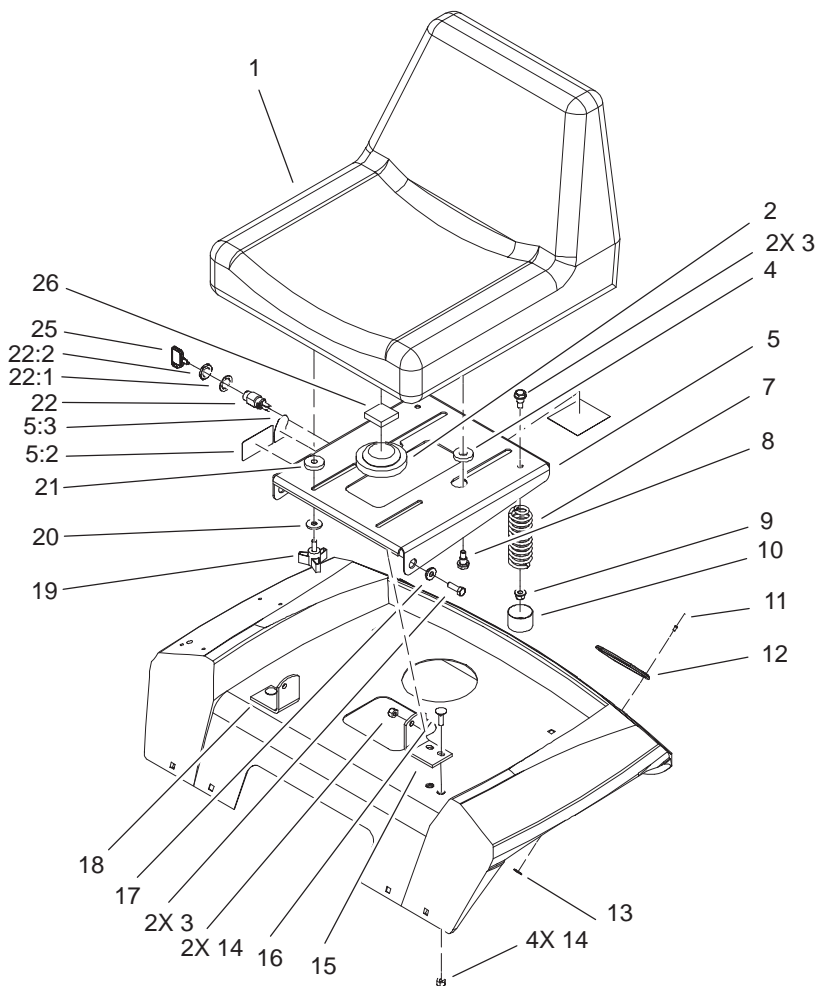


Sheet No.:15

Hydro Control Assembly

Ref. No.	Part No.	Qty.	Description
1	92-6902	1	Pad-Pedal
2	106-5649-03	1	Hydro Pedal ASM,
3	92-6903	1	Pad-Pedal
4	3256-24	2	Washer-Flat
5	92-7008	1	End-Rod, Female
6	106-5620	1	Tube-Interlock
7	106-5613	1	Rod-Hydro
8	323-10	1	Screw-HH
9	32144-70	1	Screw-HH
10	95-1504	1	Turnbuckle
11	106-5690	1	Link-Hydro
12	3256-23	3	Washer-Flat
13	3272-6	3	Pin-Cotter
14	94-7582	1	Bolt - Shoulder
15	106-5579	1	Cruise Plate ASM
16	106-5577	1	Bell Crank Rod ASM
17	94-7575	1	Spacer - Cruise
18	100-6056	1	Arm-Control, Pin Damper
19	3296-20	2	Nut-Lock, NI
20	106-8247-03	1	Bracket-Damper
21	108881	1	Nut
22	100-6057	1	Pin-Damper Bracket
23	100-8732	1	Damper-Gas
24	32151-40	1	Ring-Retaining
25	3256-29	1	Washer-Flat

Ref. No.	Part No.	Qty.	Description
26	256-90	2	Bushing-Flange
27	106-5648	1	Shaft-Pivot, Hydro
28	3296-1	2	Nut-Lock, NI
29	106-4145	1	Switch-Adjustable, Nc
30	32121-69	2	Pin-Spring
31	32105-29	2	Screw-SHWH
32	106-5560-03	1	Hydro Link ASM
33	3220-3	1	Nut-Jam
34	106-8248	1	Nut-Jam, Hex LH
35	3218-3	1	Nut-Jam

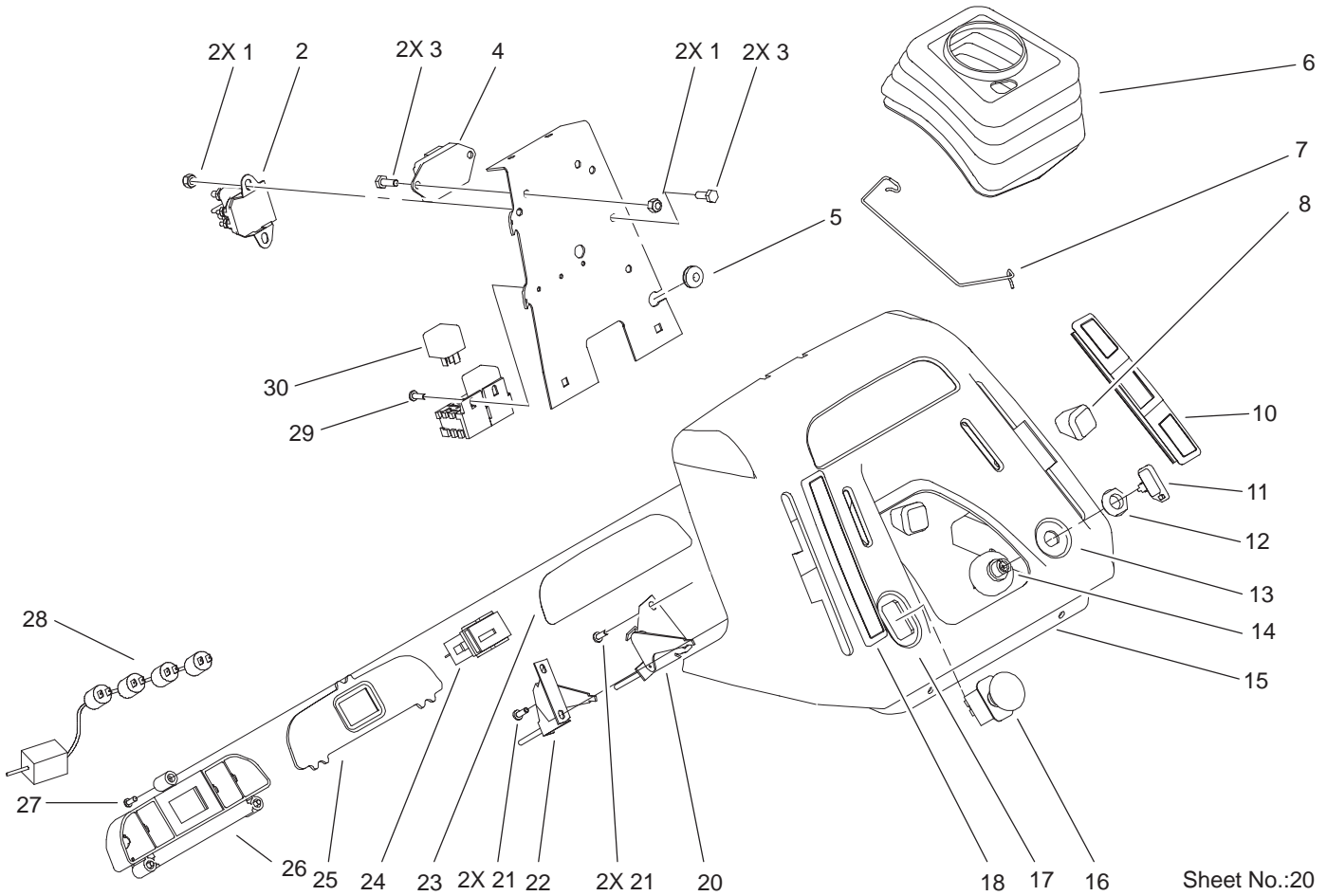


Sheet No.:19

Seat Assembly

Ref. No.	Part No.	Qty.	Description
1	104-2463	1	Seat-High Back
2	100-3524	1	Switch-Seat
3	322-5	4	Screw-HH
4	92-6750	2	Spacer-Nylon
5	104-5027	1	Support Seat ASM
5:2	99-2985	1	Danger-Decal
5:3	99-5339	1	Decal
7	92-7054	2	Spring-Compression
8	92-6986	2	Bolt-Shoulder
9	32128-25	2	Nut-Flange
10	701178	2	Cap-Protector
11	3290-282	4	Rivet-Pop, Steel
12	106557	2	Reflector-Stick On
13	3256-49	4	Washer-Flat
14	3296-29	6	Nut-Lock, NI
15	79-0950-03	1	Bracket-Pivot, RH
16	3230-31	4	Screw-CARR
17	105503	2	Bushing
18	79-0970-03	1	Bracket-Pivot LH
19	700806	2	Knob
20	94-2869	2	Washer
21	109989	2	Spacer-Nylon
22	46-5780	1	Switch-Starter
22:1	3254-5	1	Washer-Tooth
22:2	218-461	1	Nut-HH

Ref. No.	Part No.	Qty.	Description
25	62-7770	1	Key-Ignition
26	104-2488	1	Foam-Switch, Seat

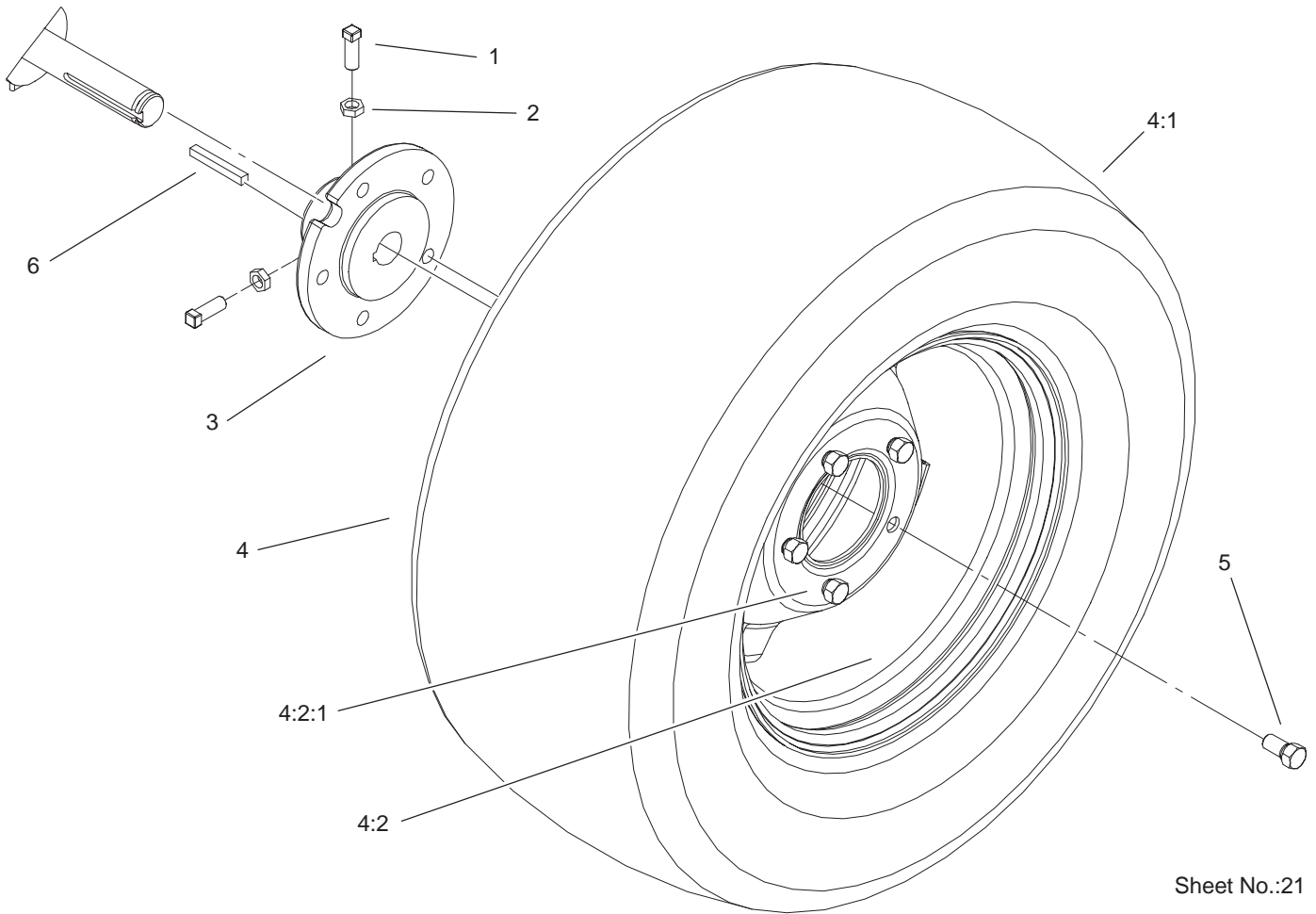


Sheet No.:20

Dash Assembly

Ref. No.	Part No.	Qty.	Description
1	3296-42	4	Nut-Lock, NI
2	106-8245	1	Solenoid
3	321-4	4	Screw-HH
4	99-3701	1	Module-Clutch
5	237-141	1	Grommet-Rubber
6	92-6680	1	Boot-Steering
7	94-2966	1	Clip - Boot
8	66-0120	2	Knob
10	92-6796	1	Cover - Slot RH
11	62-7770	1	Key-Ignition
12	700919	1	Nut
13	92-6721	1	Decal - Throttle, Ignition
14	92-6785	1	Switch-Ignition
15	94-1894	1	Dash
16	93-9998	1	Switch-PTO
17	92-6720	1	Decal - PTO/Choke
18	92-6797	1	Cover - Slot, LH
20	92-6782	1	Control-Throttle
21	32144-32	4	Screw
22	92-6781	1	Control-Choke
23	99-8038	1	Decal - Dash Lens
24	94-4208	1	Hourmeter
25	92-6705	1	Lens - Dash
26	92-6732	1	Housing - Indicator Light

Ref. No.	Part No.	Qty.	Description
27	94-6961	3	Screw
28	99-8066	1	Harness-Lamp
29	32144-8	2	Screw-HH
30	98-7249	2	Relay



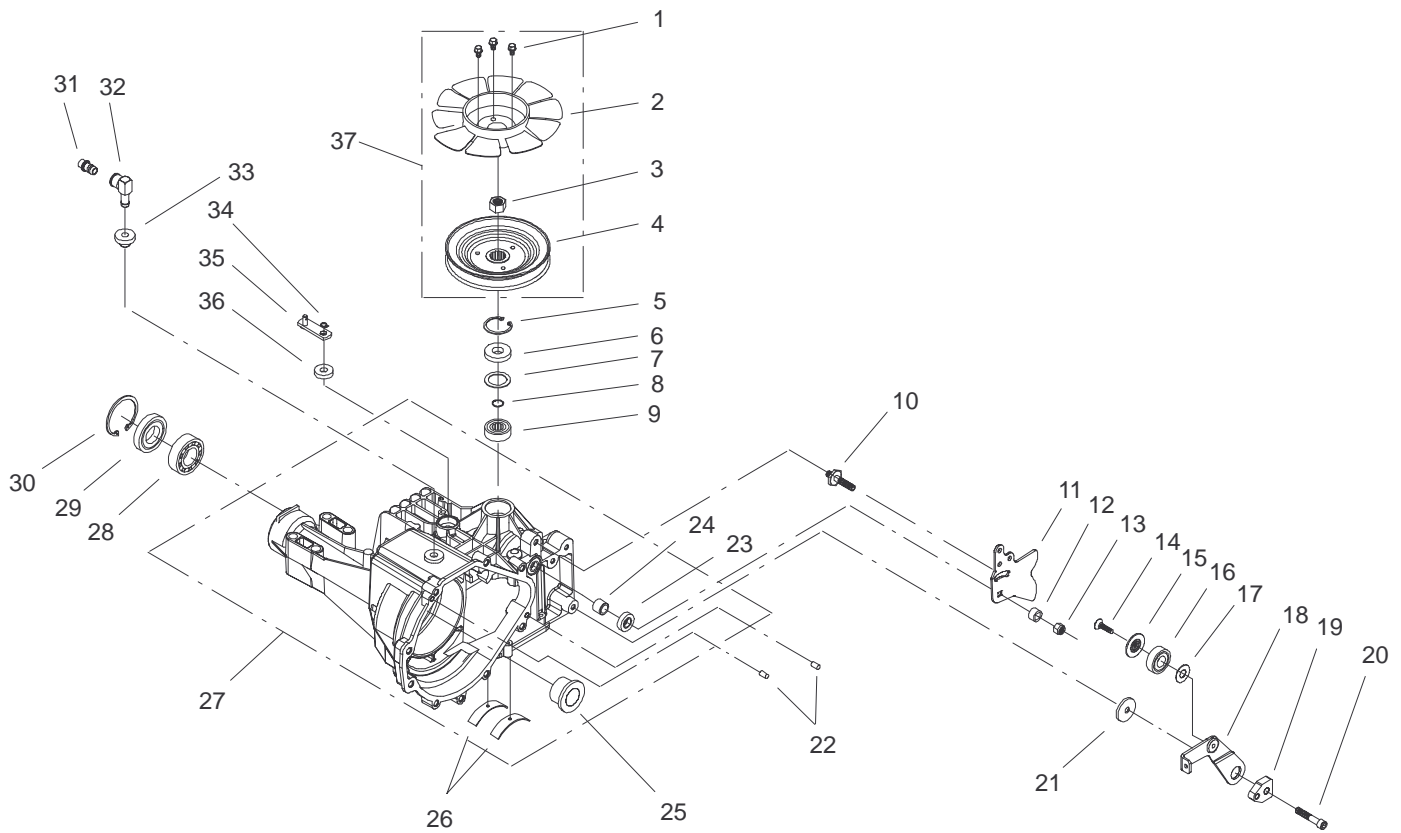
Sheet No.:21

Rear Wheel Assembly

Ref. No.	Part No.	Qty.	Description
1	3243-5	4	Screw-Set
2	3218-3	4	Nut-Jam
3	93-3659-03	2	Hub-Wheel
4		2	Rear Wheel & Tire ASM
4:1	99-2334	1	Tire
4:2	78-1221	1	Wheel
4:2:1	5108	1	Valve
*	7007	1	Tube-Inner
5	83-2720	10	Bolt-Lug
6	5-1336	2	Key-Square

Ref. No.	Part No.	Qty.	Description

* Not illustrated

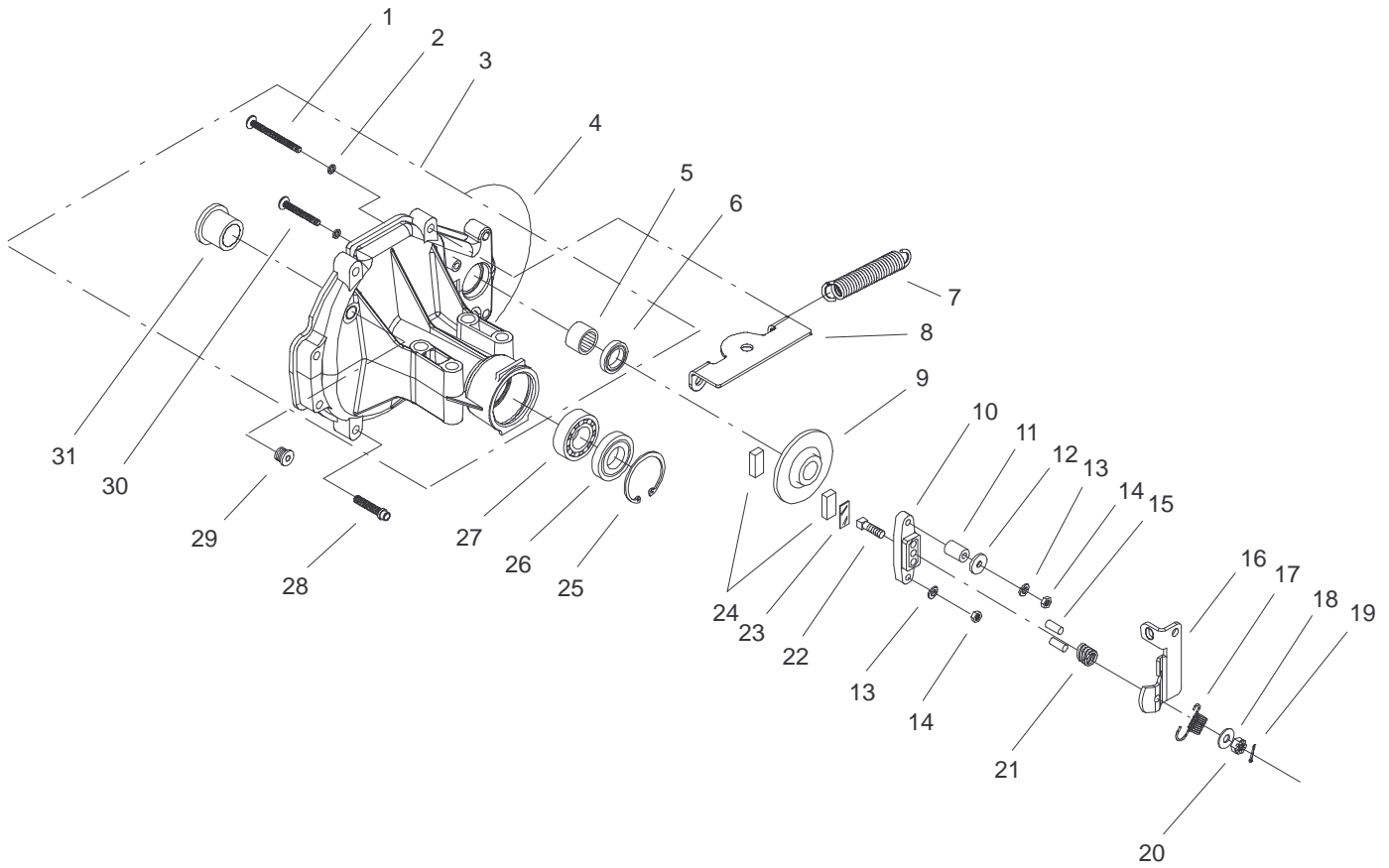


Sheet No.:3

Housing and Fan Assembly

Ref. No.	Part No.	Qty.	Description
1	104-2164	3	Screw
2	104-2162	1	Fan
3	104-2168	1	Nut-Hex
4	104-2161	1	Pulley
5	94-1903	1	Ring - Retaining
6	92-6543	1	Seal - Lip
7	104-2104	1	Spacer
8	94-1902	1	Ring - Wire Retaining
9	94-1904	1	Bearing - Shaft Ball
10	104-2116	1	Stud
11	100-6093	1	Arm-Control
12	104-2163	1	Spacer, Trunnion
13	104-2159	1	Nut-Hex Lock
14	104-2158	1	Screw-Countersunk
15	104-2157	1	Spacer-Locating
16	104-2156	1	Bearing
17	94-1933	1	Washer
18	104-2114	1	Arm-Return
19	104-2119	1	Puck-Adjusting
20	104-2155	1	Screw
21	104-2154	1	Washer
22	104-2170	2	Pin
23	92-6544	1	Seal - Lip
24	104-2113	1	Trunnion Bushing
25	104-2139	2	Bearing-Flange
26	94-1905	2	Bearing - Cradle

Ref. No.	Part No.	Qty.	Description
27	104-2101	1	Main Housing ASM
28	104-2143	2	Bearing-Ball
29	104-2144	2	Seal
30	104-2169	2	Ring-Retaining
31	104-2167	1	Cap ASM-Vent
32	104-2166	1	Fitting
33	104-2165	1	Bushing, Rubber
34	936109	1	Ring - Retaining
35	104-2117	1	Arm-Bypass
36	92-6545	1	Seal - Lip
37	104-2190	1	Kit-Fan/Pulley

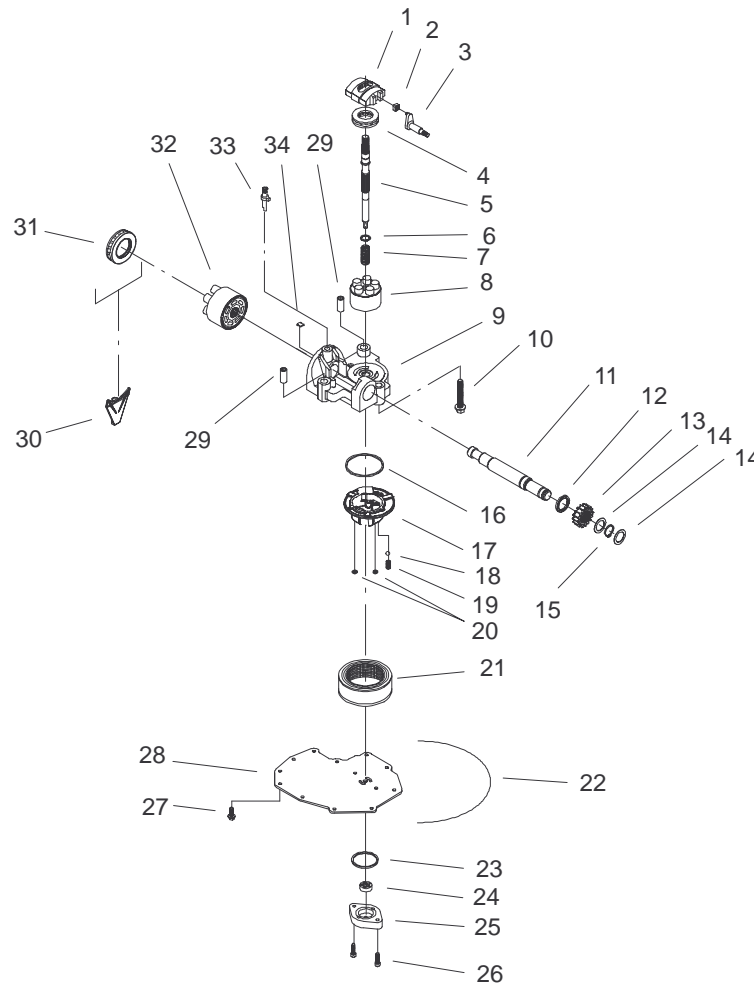


Sheet No.:5

Brake Assembly

Ref. No.	Part No.	Qty.	Description
1	104-2182	1	Bolt
2	104-2191	4	O-Ring
3	104-2102	1	RH Housing ASM
4	104-2147	1	Sealant
5	104-2149	1	Bearing-Needle
6	104-2152	1	Seal-Lip
7	104-2118	1	Spring-Return
8	100-1349	1	Bracket-Bell Crank *B
9	104-2153	1	Disk-Brake
10	104-2173	1	Yoke-Brake
11	104-2180	1	Spacer
12	104-2183	1	Washer
13	104-2177	2	Washer-Lock
14	104-2178	2	Nut
15	104-2176	2	Pin-Brake
16	104-0841	1	Arm-Brake
17	104-2184	1	Spring-Brake Arm
18	104-2146	1	Washer
19	104-2179	1	Pin-Cotter
20	93-3807	1	Nut - Castle
21	104-2188	1	Spring-Brake, Anti Drag
22	104-2174	1	Bolt-SQH
23	104-2181	1	Puck-Plate
24	104-2171	2	Puck-Brake
25	104-2169	2	Ring-Retaining

Ref. No.	Part No.	Qty.	Description
26	104-2144	2	Seal
27	104-2143	2	Bearing-Ball
28	104-2148	9	Screw-TTH
29	104-2189	1	Plug, Straight Thread
30	104-2172	1	Bolt
31	104-2139	2	Bearing-Flange



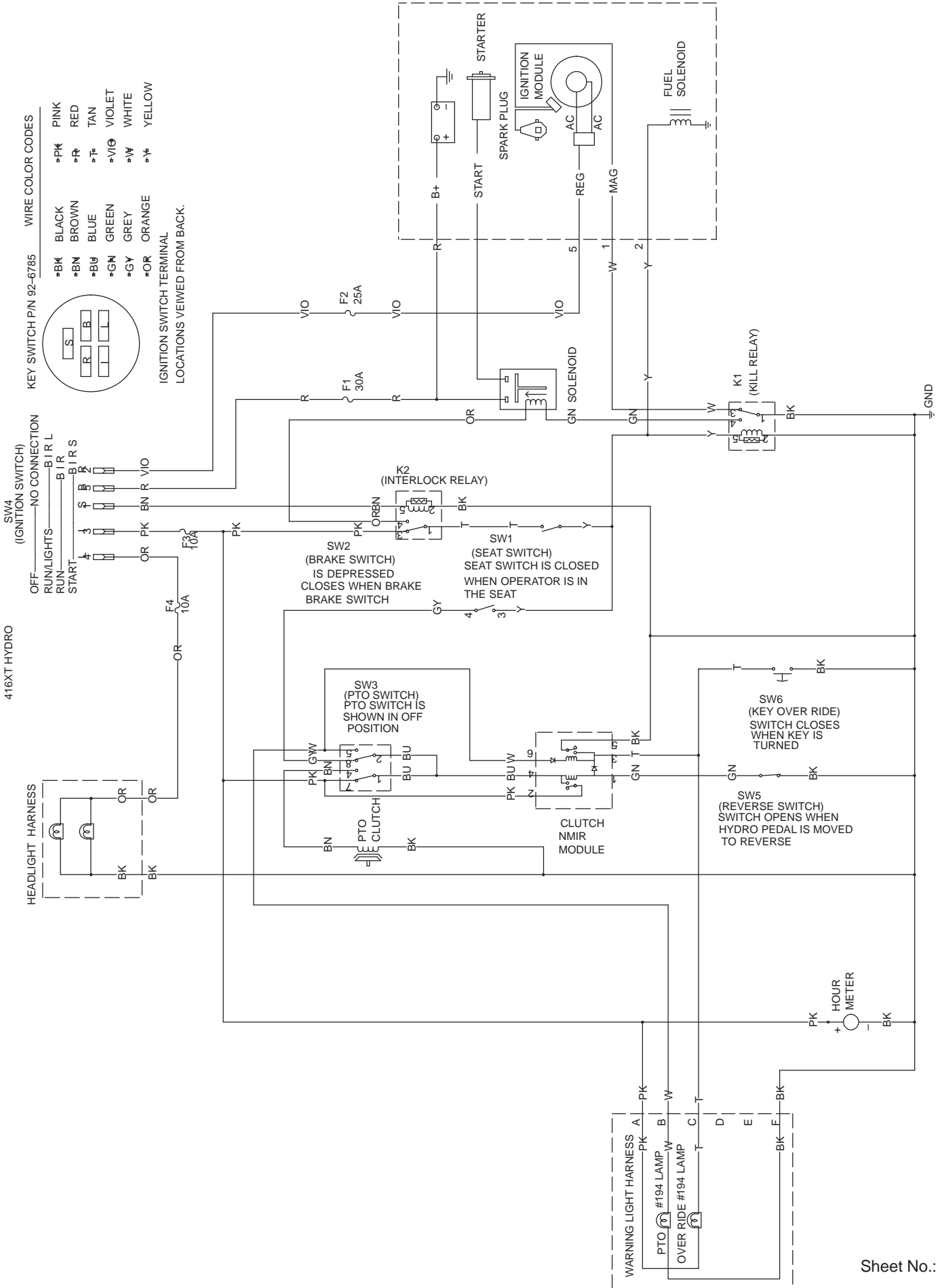
Sheet No.:6

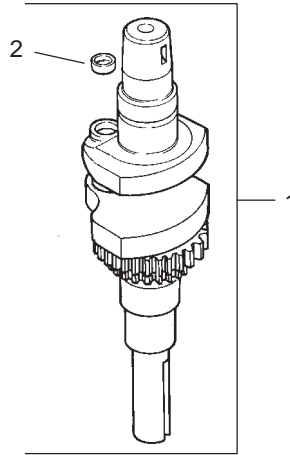
Cylinder Block Assembly

Ref. No.	Part No.	Qty.	Description
1	94-1907	1	Swashplate – Variable
2	94-1910	1	Guide – Slot
3	104-2112	1	Trunnion ASM
4	94-6922	1	Bearing – Thrust
5	104-2105	1	Shaft–Input
6	94-1937	1	Washer – Block Thrust
7	94-1936	1	Spring – Block
8	104-2106	1	Cylinder Block ASM
9	104-2103	1	Kit, Center Section
10	94-6926	3	Bolt
11	104-2107	1	Shaft–Output
12	104-2109	1	Spacer
13	104-2110	1	Gear–Pinion, 16t
14	104-2150	2	Washer
15	104-2151	1	Ring–Retaining
16	104-2185	1	O–Ring
17	104-2156	1	Bearing
18	104-2187	1	Ball
19	104-2186	1	Spring, Relief
20	104-2191	4	O–Ring
21	104-2125	1	Filter
22	104-2147	1	Sealant
23	104-2123	1	O–Ring
24	104-2122	1	Gerotor ASM
25	104-2124	1	Gerotor Cover
26	104-2111	2	Capscrew

Ref. No.	Part No.	Qty.	Description
27	104-2120	11	Screw
28	104-2121	1	Cover–Lower
29	94-1927	2	Pin
30	104-2127	1	Retainer–Motor Bearing
31	94-6923	1	Bearing – Thrust
32	94-1913	1	Cylinder Block ASM
33	94-1914	1	Actuator – Bypass
34	94-6925	1	Plate – Bypass

Electrical Schematic





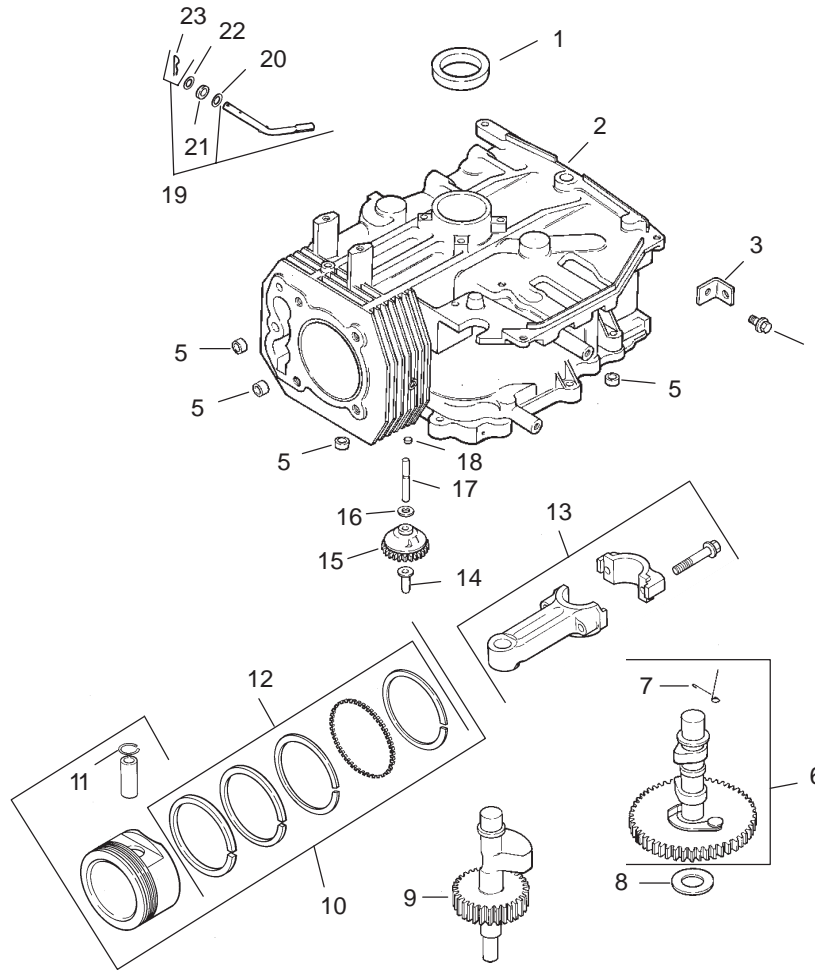
Sheet No.:

Group 1-Crankshaft Assembly

Ref. No.	Part No.	Qty.	Description
1.	12 014 67-S	1	Crankshaft (Includes 2)
2.	25 139 27-S	1	Plug, cup

Ref. No.	Part No.	Qty.	Description

Kohler Engine Model No. CV460S-26518. Obtain Parts from Local Kohler Dealer.



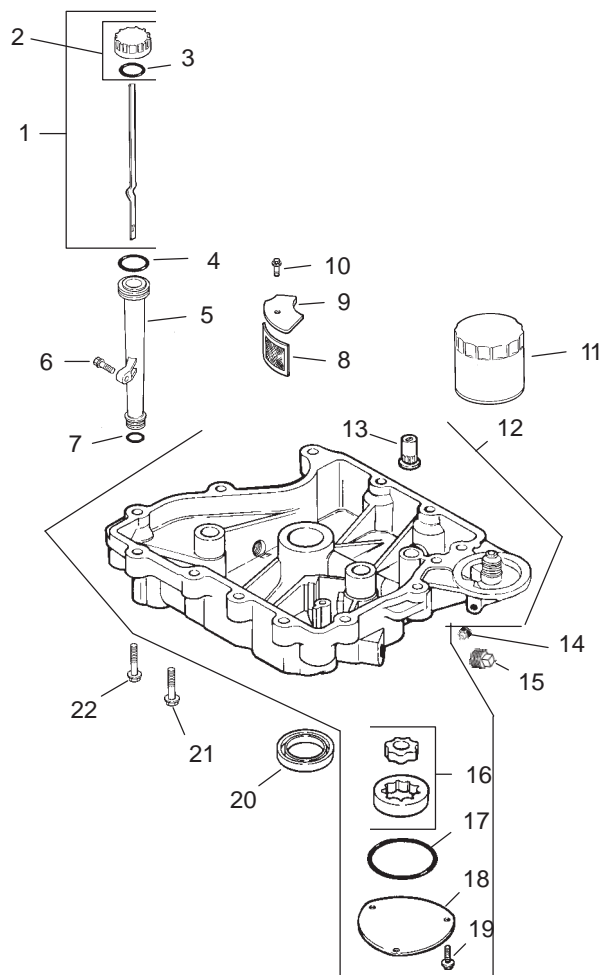
Sheet No.:

Group 2-Crankcase Assembly

Ref. No.	Part No.	Qty.	Description
1	12 032 03-S	1	Seal, front oil
2		1	Crankcase (USE: Short Block or Miniblock)
3	12 445 02-S	1	Strap, lifting
4	M-839025-S	1	Screw, hex. flange M8x1.25x25
5	24 380 13-S	4	Pin, locating
6	12 010 31-S	1	Camshaft assembly (Includes 7)
7	12 089 31-S	1	Spring, actuating
8	12 422 08-S	A/R	Shim, camshaft - blue
	12 422 09-S	A/R	Shim, camshaft - red
	12 422 10-S	1	Shim, camshaft - yellow
	12 422 11-S	A/R	Shim, camshaft - green
	12 422 12-S	A/R	Shim, camshaft - gray
	12 422 13-S	A/R	Shim, camshaft - black
	12 422 07-S	A/R	Shim, camshaft - white
9	12 144 28-S	1	Shaft, balance
10	12 874 01-S	1	Piston w/Ring Set (Std.) (Includes 11, 12)
	12 874 10-S	1	Piston w/Ring Set (.08)
	12 874 02-S	1	Piston w/Ring Set (.25)
	12 874 03-S	1	Piston w/Ring Set (.50)

Ref. No.	Part No.	Qty.	Description
11	12 018 02-S	2	Retainer, piston pin
12	12 108 01-S	1	Ring Set (Std. & .08)
	12 108 02-S	1	Ring Set (.25)
	12 108 03-S	1	Ring Set (.50)
13	12 067 11-S	1	Connecting Rod (Std.)
	12 067 12-S	1	Connecting Rod (.25)
14	12 380 01-S	1	Pin, governor regulating
15	12 043 05-S	1	Gear, governor
16	M-631005-S	1	Washer, plain 6 mm
17	12 144 02-S	1	Shaft, governor gear
18	52 139 09-S	1	Plug, cup
19	12 755 64-S	1	Kit, governor cross shaft w/clip (Includes 23)
20	X-25-102-S	1	Washer, plain 1/4
21	12 032 01-S	1	Seal, governor cross shaft
22	M-631015-S	1	Washer, plain 6 mm
23	12 154 05-S	1	Clip, hitch pin

Kohler Engine Model No. CV460S-26518. Obtain Parts from Local Kohler Dealer.

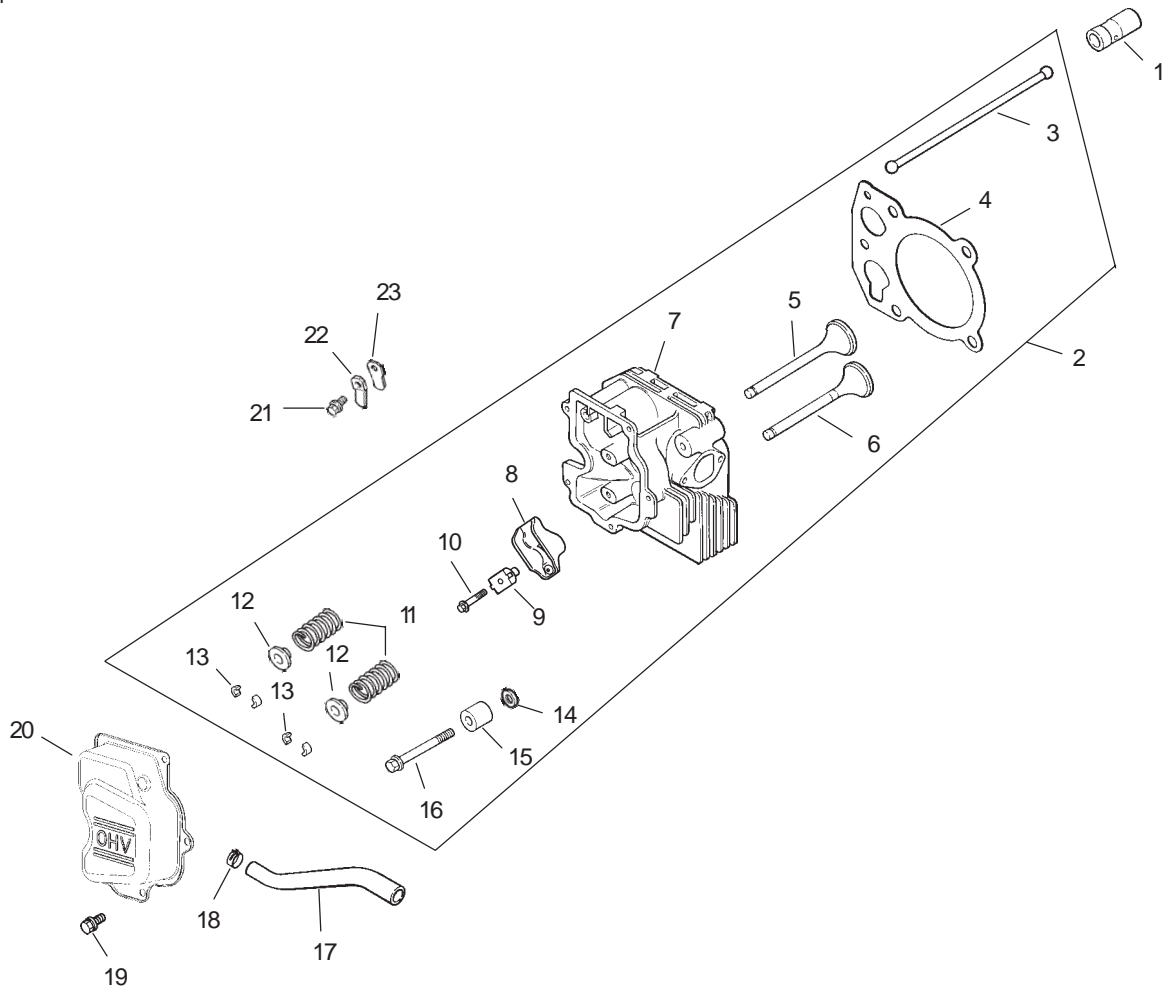


Sheet No.:

Group 3—Oil Pan/Lubrication Assembly

Ref. No.	Part No.	Qty.	Description	Ref. No.	Part No.	Qty.	Description
1	12 038 01-S	1	Dipstick assembly (Includes 2, 3)	18	12 096 34-S	1	Cover, oil pump
2	25 755 13-S	1	Kit, oil fill cap (Includes 3)	19	M-545016-S	3	Screw, hex. flange M5x0.8x16
3	25 153 02-S	1	O-Ring	20	12 032 03-S	1	Seal, oil (P.T.O. end)
4	12 153 02-S	1	O-Ring, upper oil fill tube	21	24 086 16-S	11	Screw, hex. flange M8x1.25x45
5	12 123 04-S	1	Tube, oil fill	22	24 086 17-S	1	Screw, hex. flange M8x1.25x45
6	M-645025-S	1	Screw, hex. flange M6x1.0x25				
7	12 153 01-S	1	O-Ring, lower oil fill tube				
8	25 162 07-S	1	Screen, oil pickup				
9	12 096 03-S	1	Cover, oil pickup screen				
10	M-545016-S	1	Screw, hex. flange M5x0.8x16				
11	12 050 01-S	1	Filter, oil				
12	12 199 50-S	1	Pan assembly, oil (Includes 13, 16-19)				
13	25 462 09-S	1	Valve, oil pressure relief				
14	25 139 52-S	1	Plug, sq. hd. 1/8				
15	25 139 57-S	2	Plug, sq. hd. solid 3/8				
16	12 393 01-S	1	Pump assembly, oil				
17	12 153 06-S	1	O-Ring, oil pump cover				

Kohler Engine Model No. CV460S-26518. Obtain Parts from Local Kohler Dealer.



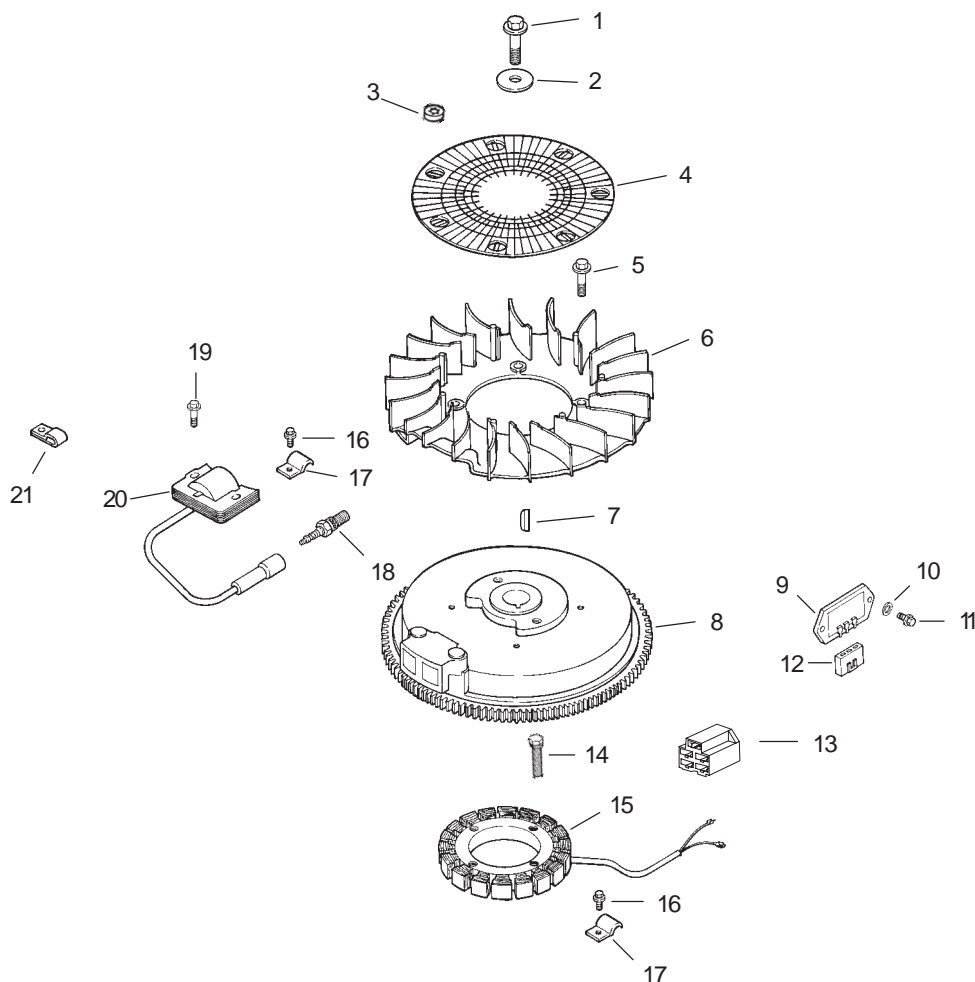
Sheet No.:

Group 4-Head/Valve/Breather Assembly

Ref. No.	Part No.	Qty.	Description
1	25 351 01-S	2	Lifter, valve
2	12 755 97-S	1	Kit, cylinder head (Includes 3-17, carburetor gasket (2), air cleaner base gasket, exhaust manifold gasket)
3	12 411 05-S	2	Rod, push
4	12 041 08-S	1	Gasket, cylinder head
5	12 017 01-S	1	Valve, intake (Std.)
6	12 016 01-S	1	Valve, exhaust (Std.)
7	12 318 50-S	1	Cylinder head
8	25 186 01-S	2	Arm, rocker
9	12 599 03-S	2	Pivot, rocker arm
10	M-640034-S	2	Screw, hex. flange M6x1.0x34
11	12 089 34-S	2	Spring, valve
12	12 173 01-S	2	Cap, valve spring
13	12 755 03-S	2	Kit, retainer
14	12 468 05-S	1	Washer, plain 13/32
15	12 112 13-S	1	Spacer, head bolt exhaust port
16	20 086 02-S	5	Screw, hex. flange M10x1.5x81
17	12 326 18-S	1	Hose, breather
18	25 237 14-S	1	Clamp, hose

Ref. No.	Part No.	Qty.	Description
19	M-645016-S	5	Screw, hex. flange M6x1.0x16
20	12 096 47-S	1	Cover, valve
21	M-545010-S	1	Screw, hex. flange M5x0.8x10
22	12 018 01-S	1	Retainer, breather reed
23	12 402 02-S	1	Reed, breather
			NOT ILLUSTRATED
	12 017 02-S	1	Valve, intake (.25)
	12 016 02-S	1	Valve, exhaust (.25)
	12 041 01-S	2	Gasket, carburetor (2)
	12 041 02-S	1	Gasket, air cleaner base
	12 041 03-S	1	Gasket, exhaust manifold

Kohler Engine Model No. CV460S-26518. Obtain Parts from Local Kohler Dealer.

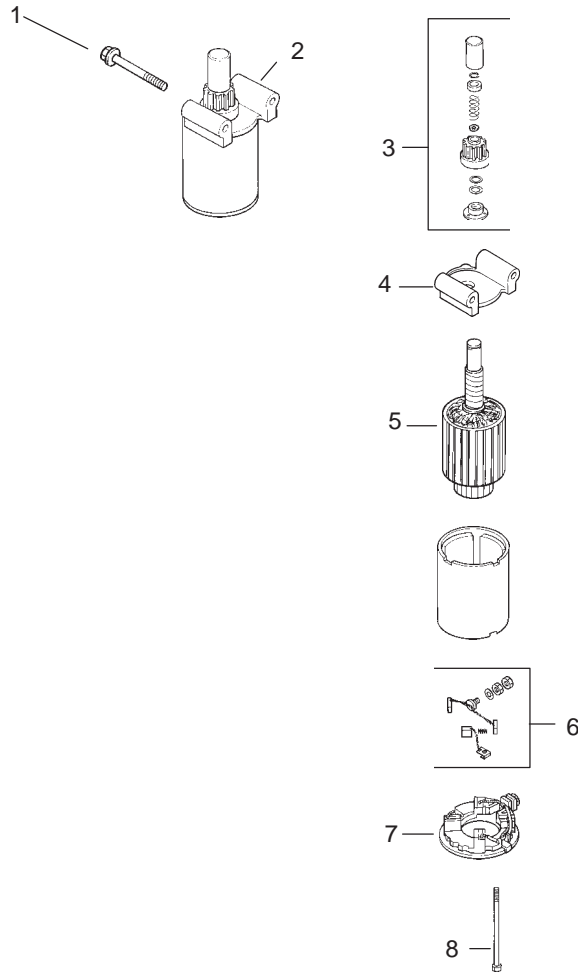


Sheet No.:

Group 5-Ignition/Electrical Assembly

Ref. No.	Part No.	Qty.	Description	Ref. No.	Part No.	Qty.	Description
1	12 086 14-S	1	Screw, hex. flange M10x1.5x46	19	M-545020-S	2	Screw, hex. flange M5x0.8x20
2	12 468 03-S	1	Washer, plain 3/8	20	12 584 04-S	1	Module, ignition
3	24 018 03-S	3	Retainer, grass screen	21	12 154 07-S	2	Clip
4	24 162 03-S	1	Screen, grass				NOT ILLUSTRATED
5	25 086 47-S	4	Bolt, shoulder M6x1.0x16				
6	12 157 06-S	1	Fan	25 452 01-S	2	Terminal	
7	X-42-15-S	1	Key	12 518 01-S	1	Lead, white (19" – 18 gauge – fully insulated push on tab and uninsulated push on tab terminals)	
8	12 025 15-S	1	Flywheel	24 518 12-S	1	Lead, black (6" – 12 gauge – insulated grip barrel eyelet terminals)	
9	41 403 09-S	1	Rectifier-regulator	25 518 05-S	1	Lead, black (5" 14 gauge 14 gauge uninsulated push on tab terminals)	
10	X-22-11-S	2	Washer, lock 1/4				
11	12 086 42-S	2	Screw, hex. flange M6x1.0x16				
12	236602-S	1	Connector rectifier- regulator (3 contact)				
13	48 155 01-S	1	Connector (5 contact)				
14	M-548025-S	2	Screw, hex. cap M5x0.8x25				
15	237878-S	1	Kit, stator (Includes Terminal 25 452 01-S)				
16	M-545010-S	2	Screw, hex. flange M5x0.8x10				
17	X-728-1-S	2	Clip				
18	12 132 02-S	1	Spark Plug				

Kohler Engine Model No. CV460S-26518. Obtain Parts from Local Kohler Dealer.



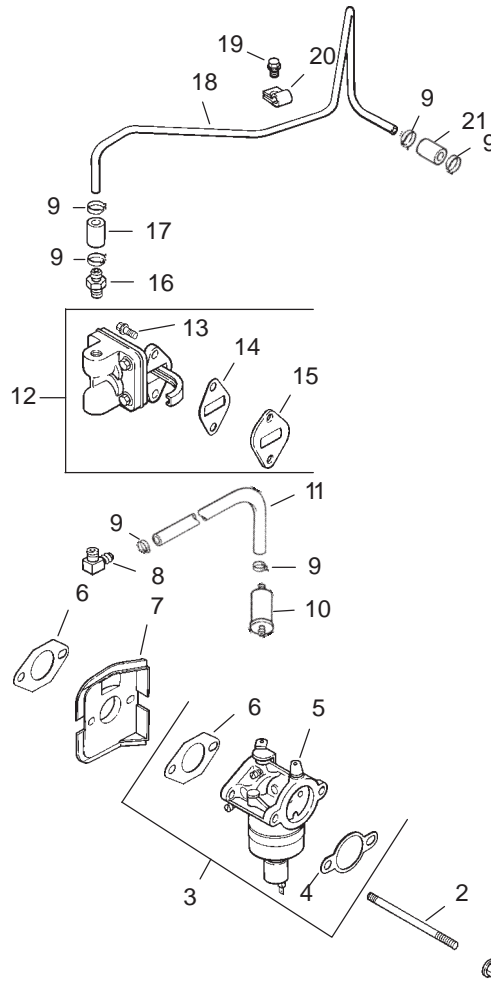
Sheet No.:

Group 7- Starter Assembly

Ref. No.	Part No.	Qty.	Description
1	M-839070-S	2	Screw, hex. flange M8x1.25x70
2	12 098 22-S	1	Starter assembly (Includes 3-8)
3	12 755 53-S	1	Kit, drive
4	12 227 19-S	1	Cap, drive end
5	12 170 05-S	1	Armature
6	12 221 01-S	1	Brush assembly
7	12 227 13-S	1	Commutator, end cap
8	12 211 01-S	2	Bolt, thru

Ref. No.	Part No.	Qty.	Description

Kohler Engine Model No. CV460S-26518. Obtain Parts from Local Kohler Dealer.

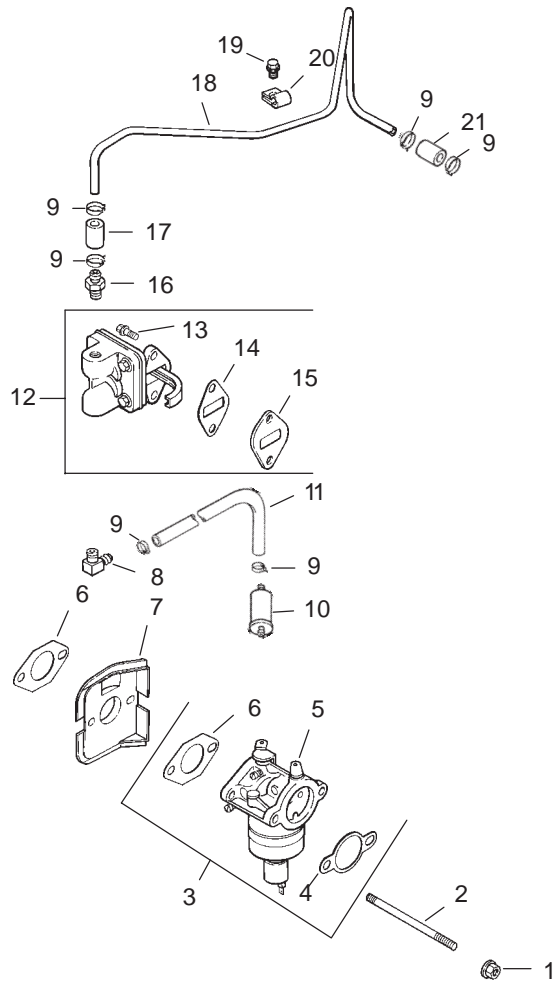


Sheet No.:

Group 8—Fuel System Assembly

Ref. No.	Part No.	Qty.	Description	Ref. No.	Part No.	Qty.	Description
1	M-641060-S	2	Nut, hex. flange M6x1.0	12	12 559 01-S	1	Kit, fuel pump (Includes 13-15)
2	M-629116-S	2	Stud M6x1.0x116 (2)	13	M-645020-S	2	Screw, hex. flange M6x1.0x20
3	12 853 131-S	1	Kit, carburetor w/gaskets (Includes 4, 5, 6 [qty. 1], Terminal 25 452 20-S, & Tie 12 454 03-S)	14	25 041 09-S	2	Gasket, fuel pump
4	12 041 02-S	1	Gasket, air cleaner	15	12 112 05-S	1	Spacer, fuel pump
5	12 053 131	1	Carburetor assembly (For information only not available separately) (Service with kits: 12 757 02-S, 1275703-S, 12 757 33-S, & 12 757 37-S)	16	25 326 03-S	1	Connector, straight hose
6	12 041 01-S	2	Gasket, carburetor	17	12 353 01-S	1	Line, fuel 1-1/4"
7	12 265 06-S	1	Deflector, heat	18	12 123 19-S	1	Line, fuel - metal
8	25 155 02-S	1	Connector, 90(hose	19	M-545010-S	1	Screw, hex. flange M5x0.8x10
9	25 237 14-S	6	Clamp, fuel line	20	12 154 01-S	1	Clamp, fuel line
10	25 050 07-S	1	Filter, fuel	21	41 353 18-S	1	Line fuel 2-1/2"
11	25 353 02-S	1	Line, fuel 3"				NOT ILLUSTRATED
					12 757 02-S	1	Kit, float
					12 757 03-S	1	Kit, carburetor repair
					12 757 33-S	1	Kit, solenoid repair
					12 757 37-S	1	Kit, bowl replacement
					12 518 24-S	1	Lead, red (20 \square - 18 gauge - insulated socket and uninsulated push on tab terminals)

Kohler Engine Model No. CV460S-26518. Obtain Parts from Local Kohler Dealer.

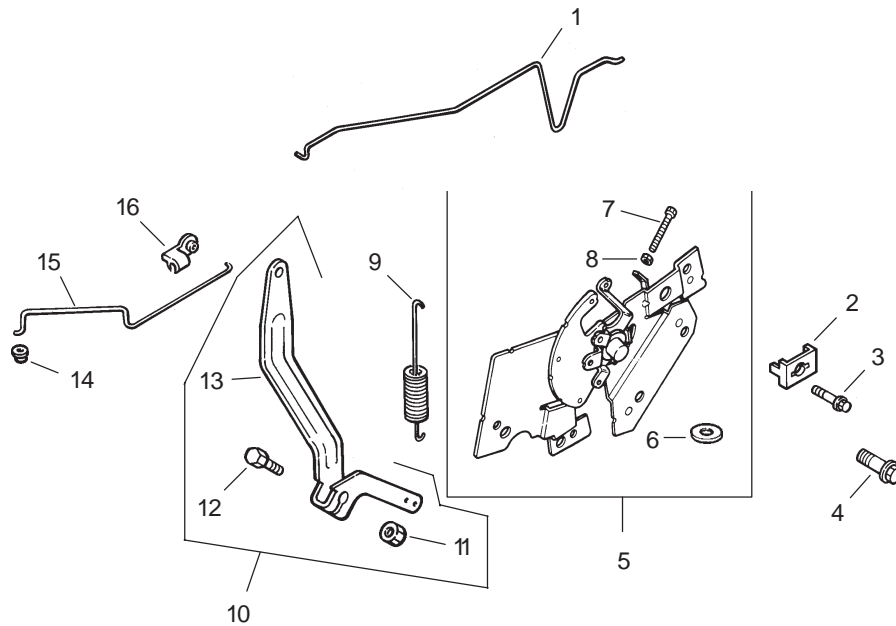


Sheet No.:

Group 8-Fuel System Assembly (continued)

Ref. No.	Part No.	Qty.	Description	Ref. No.	Part No.	Qty.	Description
	12 454 03-S	3	Tie, wire				
*	M-561010-S	1	Screw, thread forming M5x0.8x10				
*	X-22-11-S	1	Washer, lock 1/4 * Used to attach carburetor ground lead to carburetor baffle.				

Kohler Engine Model No. CV460S-26518. Obtain Parts from Local Kohler Dealer.



Sheet No.:

Group 9-Engine Control Assembly

Ref. No.	Part No.	Qty.	Description
1	12 079 11-S	1	Linkage, choke
2	12 237 01-S	2	Clamp, cable
3	M-545016-S	2	Screw, hex. flange M5x0.8x16
4	M-664020-S	2	Screw, lobed socket M6x1.0x20
5	12 536 02-S	1	Control, speed assembly (Includes 6-8)
6	230293-S	1	Spacer, shim (.005)
7	M-401030-S	1	Screw, hex. flange M4x0.7x30
8	M-446030-S	1	Nut, hex. M4x0.7
9	52 089 07-S	1	Spring, governor
10	12 755 83-S	1	Kit, governor lever (Includes 11-13)
11	12 100 07-S	1	Nut, hex. flange M6x1.0
12	52 211 04-S	1	Screw, hex. flange M6x1.0x25
13	12 090 28-S	1	Lever, governor
14	25 158 08-S	1	Bushing, linkage retaining
15	12 079 10-S	1	Linkage, throttle

Ref. No.	Part No.	Qty.	Description
16	25 158 11-S	1	Bushing, linkage retaining

Kohler Engine Model No. CV460S-26518. Obtain Parts from Local Kohler Dealer.

