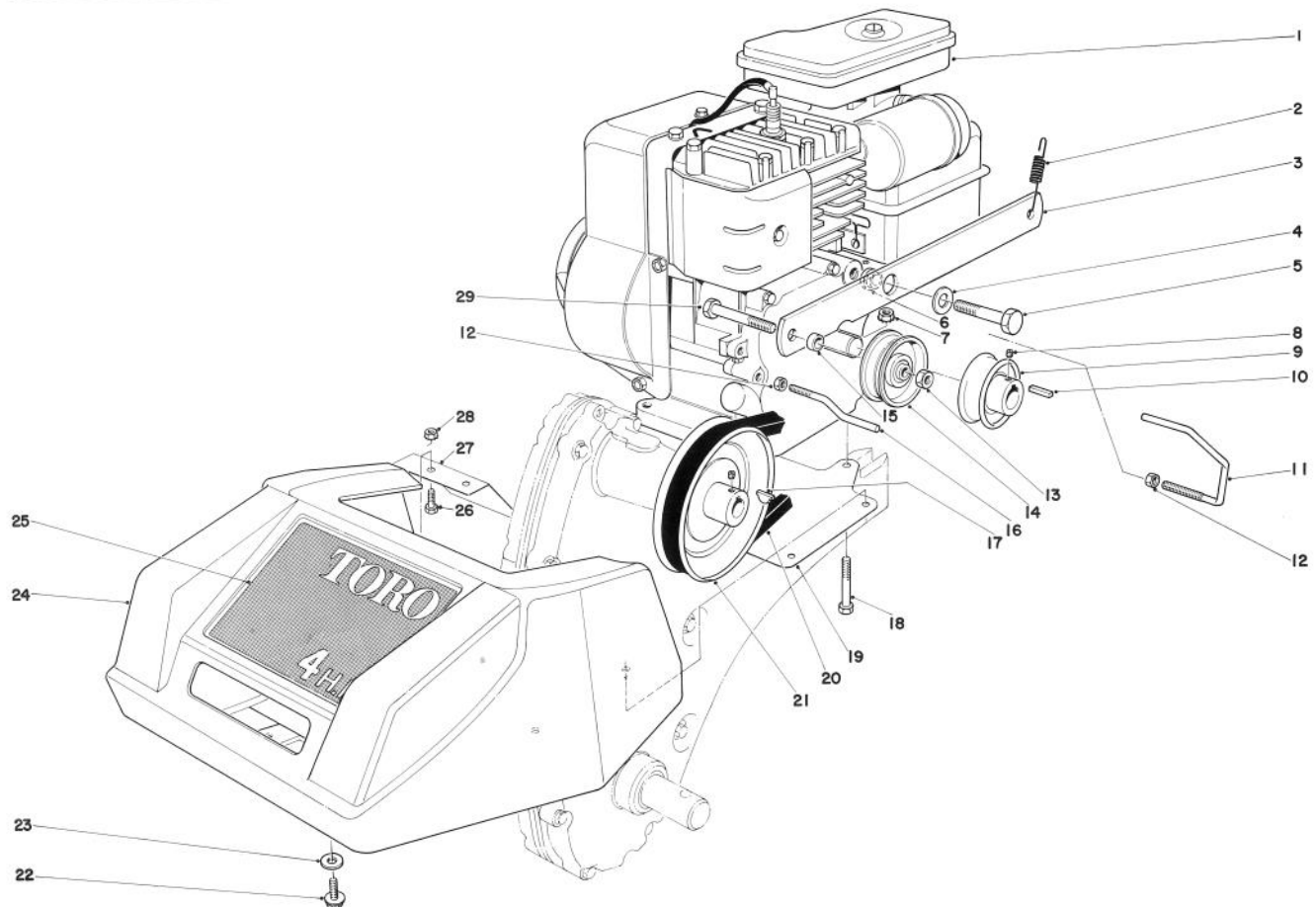
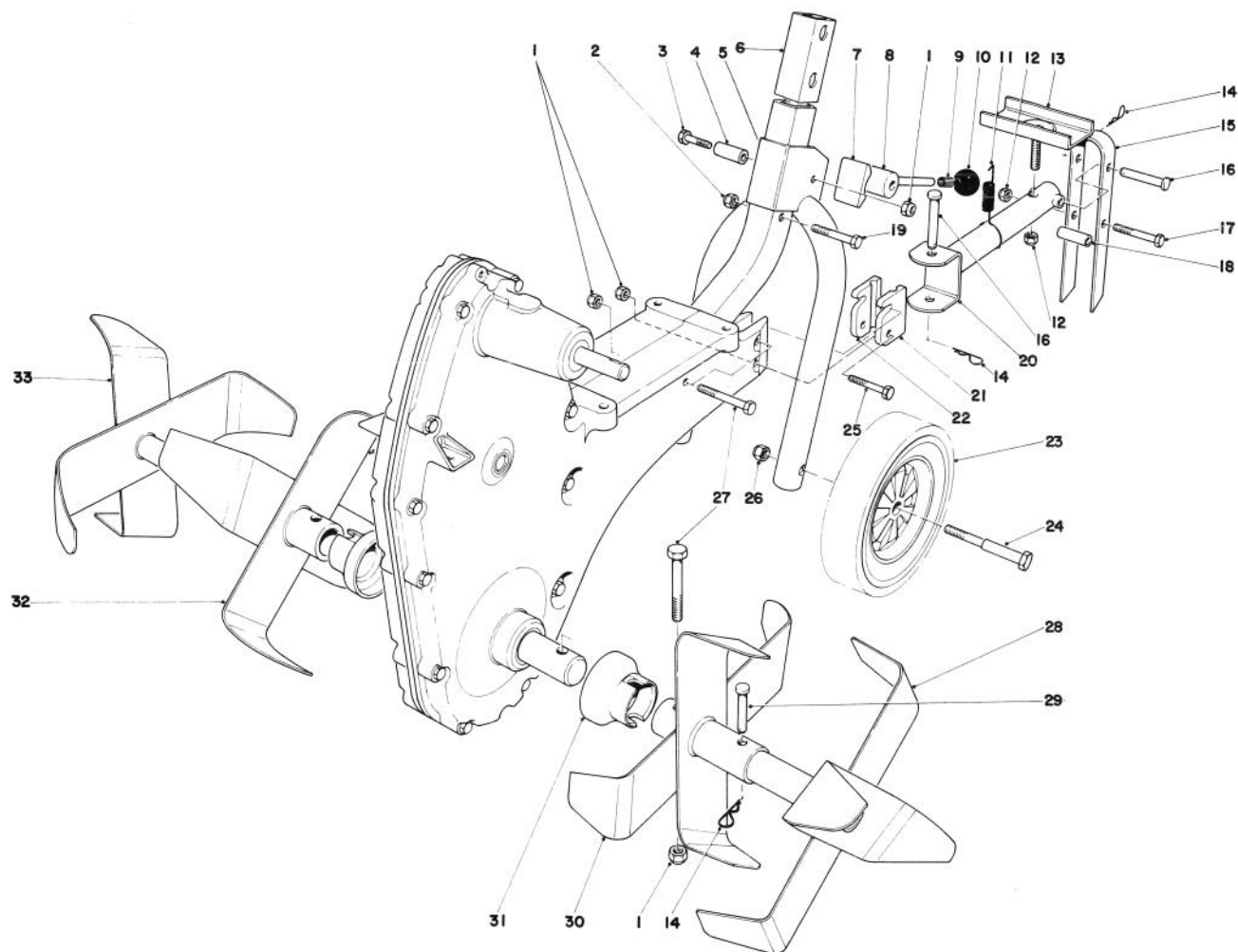



**MODEL NO. 58336 — 0000001
THRU 1000001 & UP**
**PARTS
CATALOG**
4 H.P. TILLER — CHAIN DRIVE

ENGINE AND SHROUD ASSEMBLY

Ref. No.	Part No.	Description	No. Used
1	221-531	Engine	1
2	26-3730	Spring	1
3	28-3030	Idler Arm	1
4	3256-5	Washer	1
5	3213-2	Hex Hd. Capscrew	1
6	29-6850	Spacer Idler Arm	1
7	32149-1	Nut	4
8	3245-32	Set Screw	4
9	28-2970	Driver Pulley	1
10	21-5070	Key Square	1
11	29-6650	Belt Guide	1
12	3217-5	Hex Nut	2
13	32152-2	Locknut	1
14	3-4244	Idler Pulley	1
15	36-3760	Spacer	1

Ref. No.	Part No.	Description	No. Used
16	28-2940	Belt Guide	1
17	3257-30	Hi Pro Key	1
18	322-11	Hex Hd. Capscrew	4
19	36-3750	Mounting Plate Shield	1
20	28-2990	V-Belt	1
21	28-2980	Pulley Driver	1
22	11-9760	Screw	6
23	3256-23	Washer	6
24	28-3050	Shroud	1
25	28-3060	Decal 4 H.P.	1
26	321-2	Capscrew	1
27	29-4400	Shield	1
28	32153-4	Locknut	1
29	323-10	Capscrew	1
*	28-8640	Tube Oil Fill	1

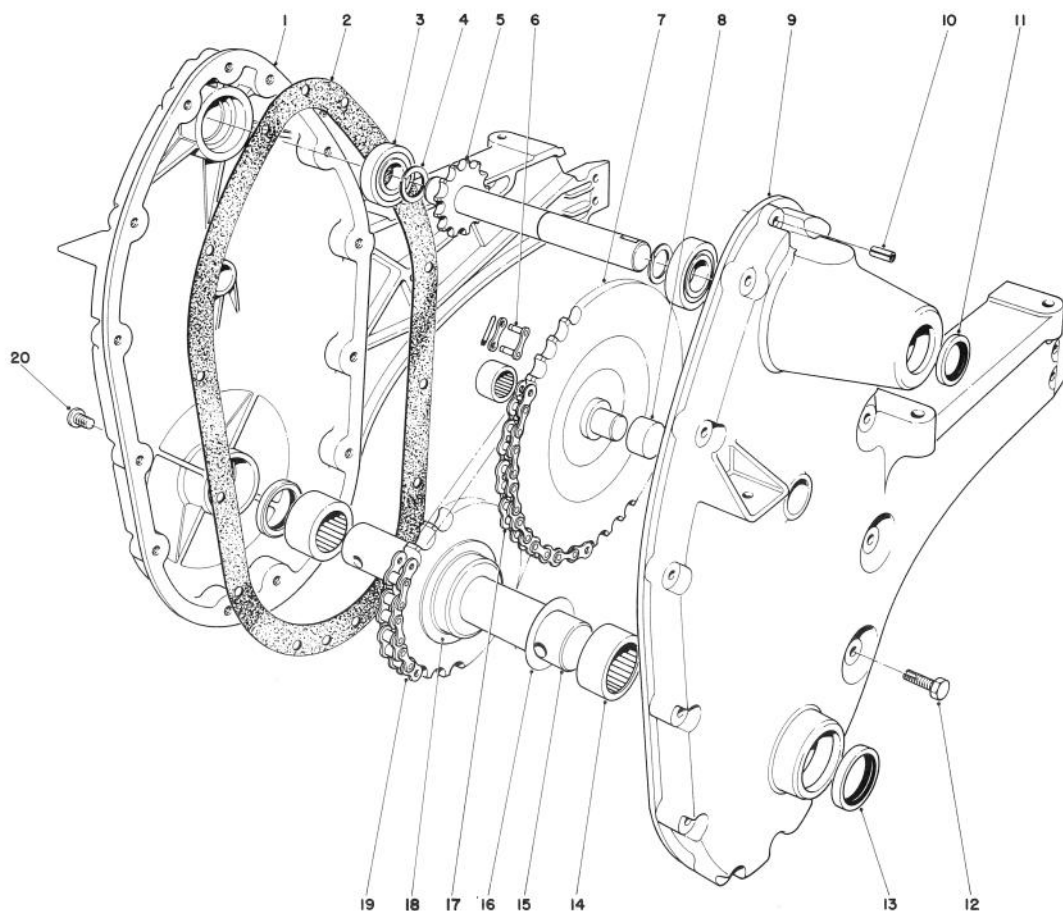
*Not Illustrated



CHAIN CASE AND TINE ASSEMBLY

Ref. No.	Part No.	Description	No. Used
1	32153-3	Locknut	6
2	32153-4	Locknut	1
3	322-11	Capscrew	1
4	36-3920	Spacer Cam	1
5	28-3080	Wheel Support	1
6	28-5370	Lower Handle	1
7	28-3110	Cam Shoe	1
8	36-3900	Cam Lever	1
9	233-44	Tolerance Ring	1
10	233-43	Knob	1
11	28-4870	Spring	1
12	32153-2	Locknut	2
13	28-3230	Drawbar Stop	1
14	3290-250	Hairpin Cotter	4
15	28-3220	Dragbar	1
16	283-52	Clevis Pin	2
17	323-12	Hex. Hd. Capscrew	1

Ref. No.	Part No.	Description	No. Used
18	28-3190	Spacer	1
19	321-9	Hex. Hd. Capscrew	1
20	28-3180	Drawbar	1
21	33-1020	Pivot Block L.H.	1
22	33-1030	Pivot Block R.H.	1
23	27-6200	Wheel & Tire Assembly	2
24	28-3160	Wheel Bolt	2
25	322-9	Capscrew	2
26	32152-2	Locknut	2
27	322-10	Hex. Hd. Capscrew	3
28	28-2900	Outboard Tine L.H.	1
29	283-18	Clevis Pin	2
30	28-2910	Inboard Tine L.H.	1
31	28-2920	Dust Cover	2
32	28-2860	Inboard Tine R.H.	1
33	28-2820	Outboard Tine R.H.	1

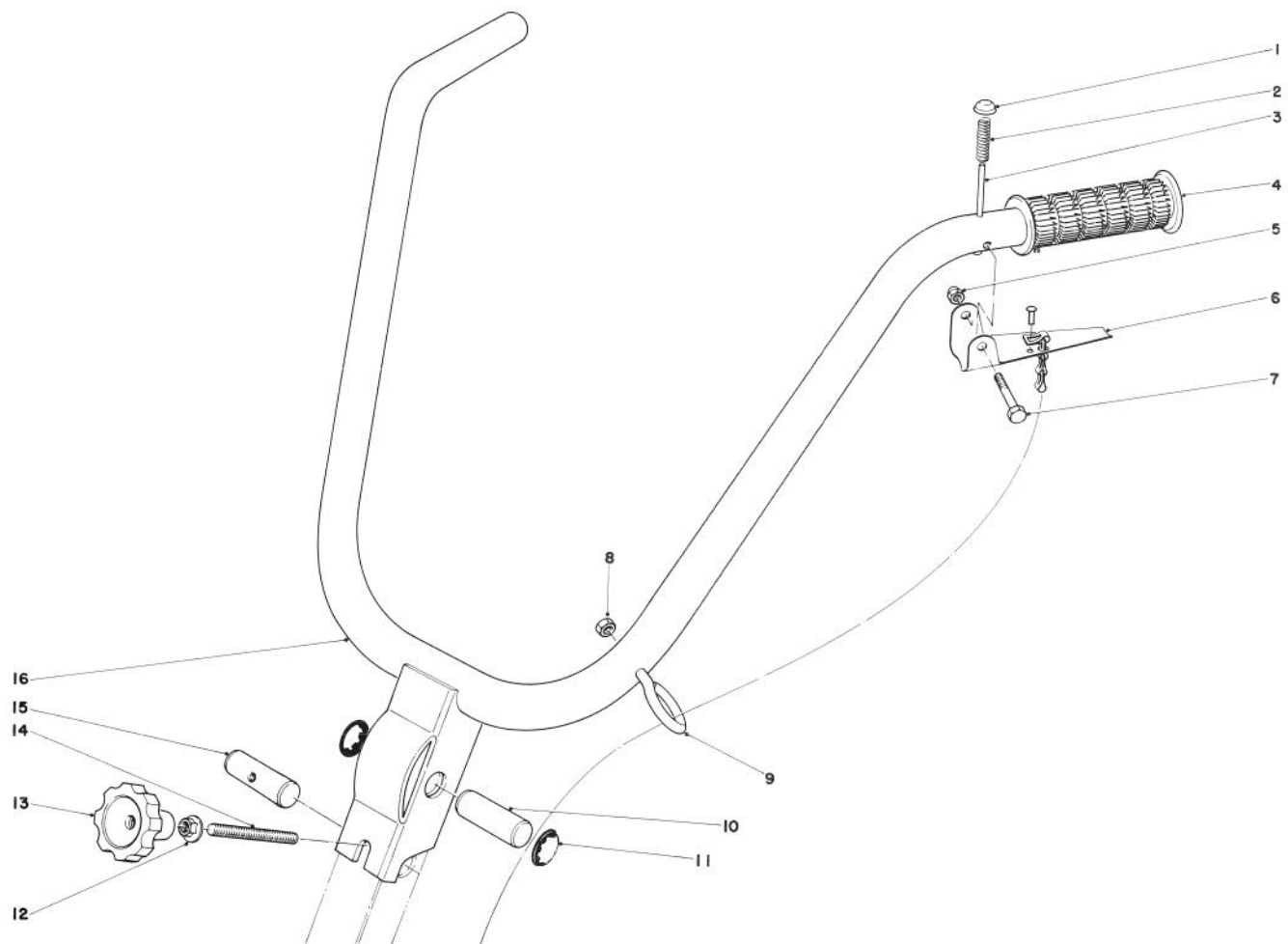


CHAIN CASE ASSEMBLY

Ref. No.	Part No.	Description	No. Used
1	27-9230	Chain Case R.H.	1
2	28-2790	Gasket	1
3	251-270	Ball Bearing	2
4	32120-38	Retaining Ring	2
5	28-2770	Upper Shaft	1
6	2710-31	Connecting Link	1
7	28-2740	Sprocket Cluster	1
8	252-90	Needle Bearing	2
9	27-9240	Chain Case L.H.	1
10	32121-11	Roll Pin	2
11	253-61	Oil Seal	1

Ref. No.	Part No.	Description	No. Used
12	36-3860	Screw Self Tapping	12
13	7-0045	Oil Seal	2
14	252-91	Needle Bearing	2
15	36-4660	Tine Shaft	1
16	256-260	Thrust Washer	1
17	28-2780	Roller Chain	1
18	36-4670	Cup Spacer	1
19	28-2730	Roller Chain	1
20	285-19	Plug	1
*	25-9150	Decal — Replacement Serial Plate	1

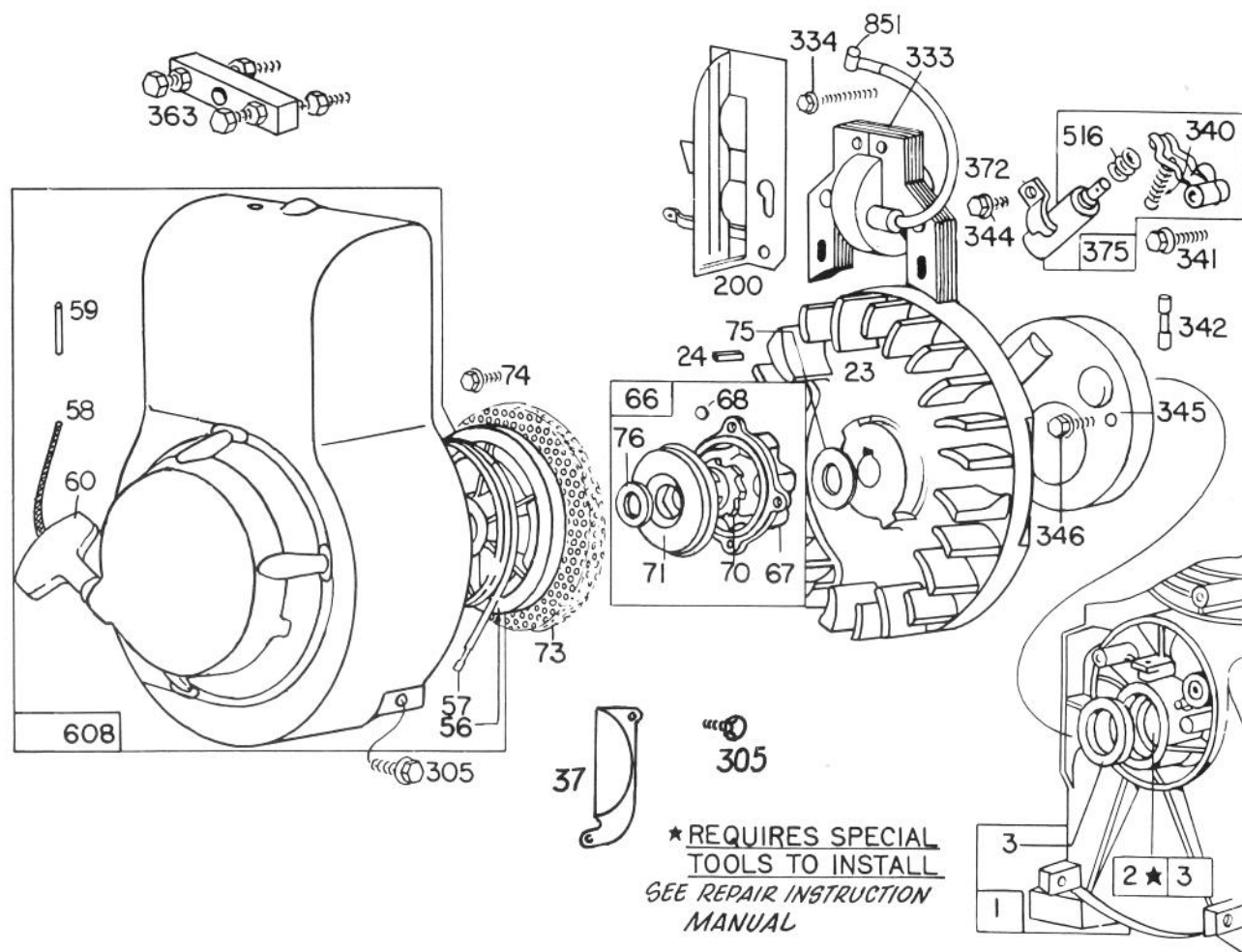
*Not Illustrated



HANDLE ASSEMBLY

Ref. No.	Part No.	Description	No. Used
1	32111-9	Push On Cap	1
2	5-4723	Spring	1
3	26-3640	Lockout Pin	1
4	235-21	Hand Grip	2
5	32111-7	Acorn Nut	1
6	28-4930	Lift Bail & Chain Assembly	1
7	321-9	Hex. Hd. Capscrew	1
8	32153-4	Locknut	1

Ref. No.	Part No.	Description	No. Used
9	36-3690	Eye Bolt	1
10	28-5000	Pivot Pin	1
11	3290-406	Push On	2
12	32128-26	Flange Nut	1
13	19-4050	Hand Knob	1
14	28-5020	Stud	1
15	36-3680	Pin Handle	1
16	36-3670	Handle Bar	1

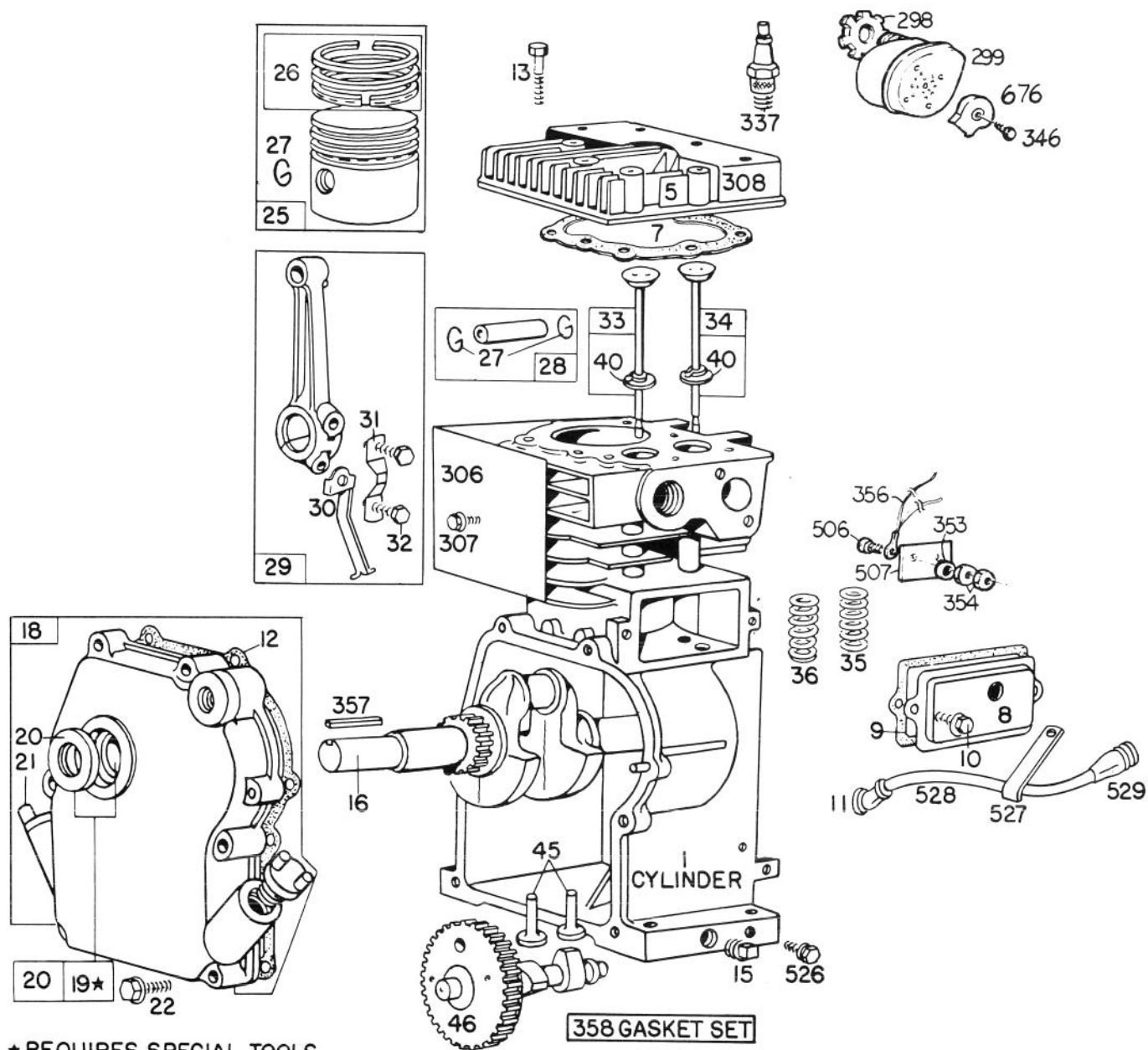


ENGINE BRIGGS & STRATTON MODEL 111202-0131-01

Ref. No.	Part No.	Description	No. Used
1	392857	Cylinder Assembly	1
2	293708	Bushing – Cylinder	1
		Note: Requires special tools for installation.	
3	299819	Seal – Oil	1
23	296884	Flywheel – Magneto	1
24	61760	Key – Flywheel	1
37	222403	Guard – Flywheel	1
56	280117	Pulley – Rewind Starter	1
57	294303	Spring – Rewind Starter	1
58	66694	Rope – Starter – 47-1/8"	1
59	230228	Pin – Starter Grip	1
60	66728	Grip – Starter Rope	1
66	298310	Clutch Assembly – Rewind Starter	1
67	211383	Housing – Starter Clutch	1
68	63770	Ball – Clutch	1
70	298436	Ratchet – Rewind Starter	1
71	221653	Washer – Clutch Retainer	1
73	221661	Screen – Rotating	1
74	93490	Screw – Rotating Screen Mounting	1
75	220865	Washer – Spring	1
76	68238	Washer – Ratchet Sealing	1
200	392913	Blade – Governor	1

Ref. No.	Part No.	Description	No. Used
305	93158	Screw	1
333	298502	Armature – Magneto	1
334	93381	Screw – Armature Mounting Sem	1
340	26018	Spring – Breaker Arm	1
341	93381	Screw	1
342	65704	Plunger – Breaker Point	1
344	93042	Screw – Condenser Clamp Mounting	1
345	220366	Cover – Breaker Point and Condenser	1
346	93705	Screw – Dust Cover Mounting	1
363	19069	Puller – Flywheel (Optional Accessory)	1
372	220477	Clamp – Condenser	1
375	294628	Breaker Points and Condenser Set	1
		Note: 299061 Ignition Kit Includes: 294628 Point Set, 65704 Plunger, 61760 Key – Flywheel	
516	260374	Spring – Connector	1
608	392865	Starter Assembly – Rewind (10 o'clock)	1
851	221798	Terminal – Cable	1

ENGINE BRIGGS & STRATTON MODEL 111202-0131-01

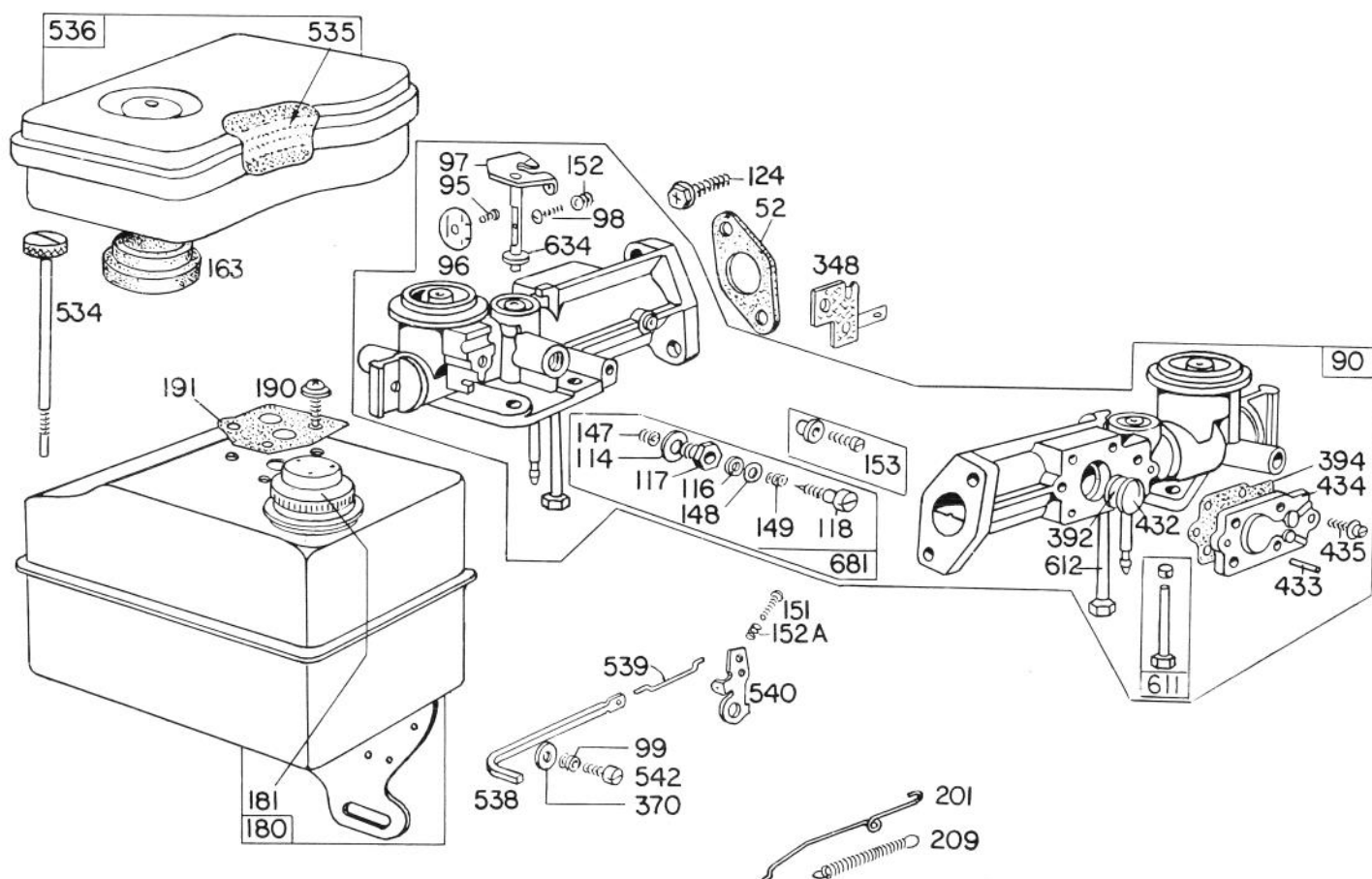


ENGINE BRIGGS & STRATTON MODEL 111202-0131-01

Ref. No.	Part No.	Description	No. Used
1	392857	Cylinder Assembly	1
5	211851	Head — Cylinder	1
7	*270836	Gasket — Cylinder Head	1
8	294178	Breather — Valve Chamber	1
9	*27549	Gasket — Valve Cover	1
10	93394	Screw — Breather Mounting	1
11	66578	Grommet — Breather Tube	1
12	*270833	Gasket — Crankcase — .015" thick (Standard)	1
	*270895	Gasket — Crankcase — .005" thick	1
	*270896	Gasket — Crankcase — .009" thick	1
13	93111	Screw — Cylinder Head (1-15/16" long)	1
15	93448	Plug — Oil Drain (Hex. Socket Head)	1
16	261414	Crankshaft	1
18	392974	Cover Assembly — Crankcase	1
19	293708	Bushing — Crankcase Cover Note: Bushing requires special tools for installation	1
20	299819	Seal — Oil	1
21	66768	Plug — Oil Filler	1
22	93032	Screw — Crankcase Cover Mounting	1
25	391650	Piston Assembly — Std.	1
	391651	Piston Assembly — .010" O.S.	1
	391652	Piston Assembly — .020" O.S.	1
	391653	Piston Assembly — .030" O.S.	1
26	391654	Ring Set — Std. Piston	1
	391656	Ring Set — .010" O.S. Piston	1
	391658	Ring Set — .020" O.S. Piston	1
	391660	Ring Set — .030" O. S. Piston	1
27	26026	Lock — Piston Pin	1

Ref. No.	Part No.	Description	No. Used
28	391649	Pin Assembly — Piston — Standard	1
29	392939	Rod Assembly — Connecting	1
30	220670	Dipper — Connecting Rod	1
31	222390	Lock — Connecting Rod Screw	1
32	93670	Screw — Connecting Rod	1
33	212004	Valve — Exhaust	1
34	261233	Valve — Intake	1
35	260552	Spring — Intake Valve	1
36	26478	Spring — Exhaust Valve	1
40	93312	Retainer — Valve Spring	1
45	261250	Tappet — Valve	1
46	392171	Gear — Cam	1
298	220859	Locknut — Muffler	1
299	392811	Muffler — Exhaust (Lo-Tone)	1
306	222681	Shield — Cylinder	1
307	93042	Screw — Cylinder Shield Mounting	1
308	222679	Cover — Cylinder Head	1
337	293918	Plug — Spark (with gasket) (1-1/2" High — 37-42 M.M.)	1
346	93705	Screw — Dust Cover Mounting	1
353	92791	Washer — Lock	1
354	90576	Nut — Hex.	1
356	392074	Wire — Ground	1
357	91539	Key — Square	1
358	392856	Gasket Set	1
506	90200	Screw — Machine, Fil. Hd.	1
507	66895	Insulator	1
526	93343	Screw — Tank Bracket Mounting	1
527	221279	Clamp — Breather Tube	1
528	230634	Tube — Breather	1
529	67608	Grommet — Breather Tube	1
676	222522	Deflector — Exhaust	1

*Included in Gasket Set — Part No. 392856



ENGINE BRIGGS & STRATTON MODEL 111202-0131-01

Ref. No.	Part No.	Description	No. Used
52	392854	Gasket — Intake Elbow Mounting	2
90	392905	Carburetor Assembly (Manual Choke)	1
95	93499	Screw — Throttle Valve Mounting	1
96	211203	Valve — Throttle	1
97	297961	Shaft and Lever — Throttle	1
98	93524	Screw — Machine, Rd. Hd.	1
99	26157	Spring	1
114	66594	Gasket — Needle Valve Nut	1
116	65978	Packing — Needle Valve	1
117	230590	Nut — Needle Valve	1
118	23433	Valve — Needle	1
124	93357	Screw — Nex. Hd.	1
147	230591	Seat — Needle Valve	1
148	22235	Washer — Needle Valve	1
149	26336	Spring — Needle Valve	1
151	93350	Screw — Machine, Rd. Hd.	1
152	260746	Spring Throttle Adjustment	1
152A	260575	Spring — Speed and Throttle Adjustment	1
153	392922	Screw — Carburetor Cam and Lever	1
163	*27660	Gasket — Air Cleaner Mounting	1
180	296591	Tank Assembly — Fuel (2 quart)	1
181	298425	Cap — Fuel Tank	1

Ref. No.	Part No.	Description	No. Used
190	93341	Screw — Fuel Tank Mounting	1
191	*27911	Gasket — Fuel Tank Mounting	1
201	261372	Link — Governor	1
209	260687	Spring — Air Vane Governor	1
348	296110	Plate Assembly — Stop Switch Insulator	1
370	66432	Washer — Plain	1
392	260455	Spring — Fuel Pump Diaphragm	1
394	270026	Diaphragm	1
432	221377	Cap — Spring	1
433	93265	Pin — Diaphragm Cover	1
434	210959	Cover — Diaphragm	1
435	93141	Screw — Diaphragm Cover	1
534	93322	Screw — Air Cleaner	1
535	27987	Element — Air Cleaner	1
536	297036	Cleaner Assembly — Air	1
538	260683	Rod — Speed Control (square rod)	1
539	260684	Link — Rod	1
540	220678	Lever — Speed Adjuster	1
542	91359	Screw — Machine, Fil. Hd.	1
611	391813	Fuel Pipe and Clip Assembly	1
612	296811	Pipe — Fuel (1-5/8" long) Plastic	1
634	270167	Washer — Throttle Shaft (Felt)	1
681	299060	Needle Valve Kit	1

*Included in Gasket Set — Part No. 392856

The Toro Promise

A ONE YEAR LIMITED WARRANTY

The Toro Company promises to repair any TORO Product if defective in materials or workmanship. The following time periods from the date of purchase apply:

Residential Product 1 Year
Residential Products Used Commercially . . . 45 Days

The costs of parts and labor are included, but the customer pays the transportation costs. Just return any residential product to an Authorized TORO Service Dealer or TORO Distributor.

Should you feel your TORO Product is defective and wish to rely on The Toro Promise, the following procedure is recommended:

1. Contact any Authorized TORO Service Dealer, TORO Master Service Dealer, or TORO Distributor (the Yellow Pages of your telephone directory is a good reference source).
2. He will either instruct you to return the product to him or recommend another Authorized TORO Service outlet which might be more convenient.
3. Bring the product along with your original sales slip, or other evidence of purchase date, to the service dealer.
4. The servicing dealer will inspect the unit, advise you whether the product is defective and, if so, make all repairs necessary to correct the defect without extra charge to you.

If for any reason you are dissatisfied with the dealer's analysis of the defect or the service performed, you may contact us.

Write:

TORO Consumer Service Department
8111 Lyndale Avenue South
Minneapolis, Minnesota 55420

The above remedy of product defects through repair by an Authorized TORO Service Dealer is the purchaser's sole remedy for any defect.

THERE IS NO OTHER EXPRESS WARRANTY. ALL IMPLIED WARRANTIES OF MERCHANTABILITY AND FITNESS FOR USE ARE LIMITED TO THE DURATION OF THE EXPRESS WARRANTY.

Some states do not allow limitations on how long an implied warranty lasts, so the above limitation may not apply to you.

This warranty applies only to parts or components which are defective and does not cover repairs necessary due to normal wear, misuse, accidents, or lack of proper maintenance. Regular, routine maintenance of the unit to keep it in proper operating condition is the responsibility of the owner.

All warranty repairs reimbursable under The Toro Promise must be performed by an Authorized TORO Service Dealer using Toro approved replacement parts.

Repairs or attempted repairs by anyone other than an Authorized TORO Service Account are not reimbursable under The Toro Promise. In addition, these unauthorized repair attempts may result in additional malfunctions, the correction of which is not covered by warranty.

THE TORO COMPANY IS NOT LIABLE FOR INDIRECT, INCIDENTAL OR CONSEQUENTIAL DAMAGES IN CONNECTION WITH THE USE OF THE PRODUCT INCLUDING ANY COST OR EXPENSE OF PROVIDING SUBSTITUTE EQUIPMENT OR SERVICE DURING PERIODS OF MALFUNCTION OR NON-USE.

Some states do not allow the exclusion or limitation of incidental or consequential damages, so the above limitation or exclusion may not apply to you.

This warranty gives you specific legal rights, and you may also have other rights which vary from state to state.

COUNTRIES OTHER THAN THE UNITED STATES OR CANADA

Customers who have purchased TORO products exported from the United States or Canada should contact their TORO Distributor (Dealer) to obtain guarantee policies for your country, province or state. If for any reason you are dissatisfied with your Distributor's service or have difficulty obtaining guarantee information, contact

the TORO importer. If all other remedies fail, you may contact us at The Toro Company.

International Group
Service Department
One Corporate Center
7401 Metro Boulevard
Minneapolis, Minnesota 55435 U.S.A.

PRODUCT CHANGES

In an effort to make improvements available to TORO owners as quickly as possible, minor changes are incorporated into Toro's products from time to time that do not become immediately shown in the Parts Catalog. If such a change apparently has been made in your unit, which is not reflected in your manual, see your TORO Distributor or his Authorized TORO Service Dealer for information and part numbers.

IDENTIFICATION AND ORDERING

Model and Serial Numbers

The Tiller has two identification numbers: a model number and a serial number. The two numbers are stamped on a decal which is located on the left rear side of the chain drive case. In any correspondence concerning the Tiller, supply model and serial numbers to assure that correct information and replacement parts are obtained.

To order replacement parts from an Authorized TORO Service Dealer, supply the following information:

1. Model and serial numbers of the Tiller.
2. Part number, description, and quantity of part(s) desired.

NOTE: Do not order by reference number if a parts catalog is being used; use the PART NUMBER.

MAINTENANCE RECORD

Date	Hours Used	Oil Change	Air Cleaner Service	Check Spark Plug	Preparing For Storage	Comments

MAINTENANCE RECORD

[illegible]

MAINTENANCE RECORD

[illegible]