



Count on it.

Form No. 3462-248 Rev A

Operator's Manual

Triple Bagging System

**Z Master® Professional 7500-D Series Riding
Mower With 60in or 72in TURBO FORCE®
Side Discharge Mower**

Model No. 78560—Serial No. 400000000 and Up



⚠ WARNING

CALIFORNIA Proposition 65 Warning

Use of this product may cause exposure to chemicals known to the State of California to cause cancer, birth defects, or other reproductive harm.

Model No. _____

Serial No. _____

This manual identifies potential hazards and has safety messages identified by the safety-alert symbol (Figure 2), which signals a hazard that may cause serious injury or death if you do not follow the recommended precautions.



Figure 2

Safety-alert symbol

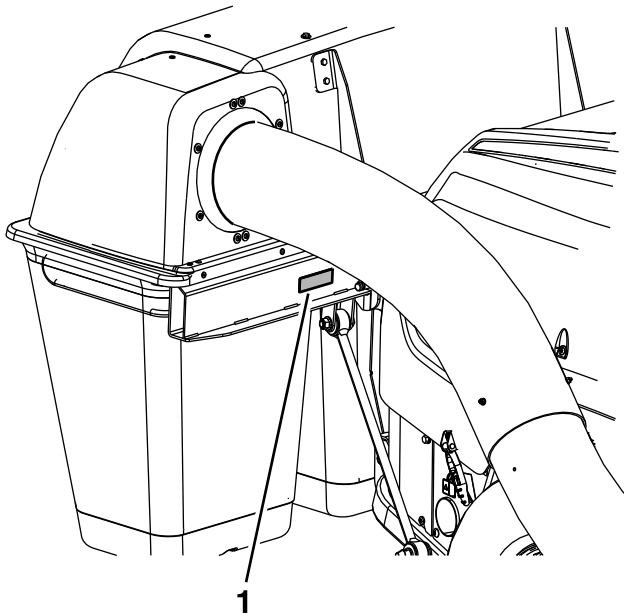
g000502

Introduction

Read this information carefully to learn how to operate and maintain your product properly and to avoid injury and product damage. You are responsible for operating the product properly and safely.

You may contact Toro directly at www.Toro.com for product safety and operation training materials, accessory information, help finding a dealer, or to register your product.

Whenever you need service, genuine Toro parts, or additional information, contact an Authorized Service Dealer or Toro Customer Service and have the model and serial numbers of your product ready. Figure 1 identifies the location of the model and serial numbers on the product. Write the numbers in the space provided.



g241694

Figure 1

1. Model and serial number location

Contents

Safety	3
Safety and Instructional Decals	4
Setup	6
1 Preparing the Machine	6
2 Installing the Weights	8
3 Installing the Blower Assembly	9
4 Installing the Mount Brackets	11
5 Installing the Hood Assembly and Bags	12
6 Installing the Discharge Tubes	13
7 Adjusting the Parking Brake	15
8 Checking the Tire Pressure	15
Operation	15
Positioning the Adjustable Baffle	15
Emptying the Grass Bags	16
Clearing Obstructions from the Bagger System	16
Removing the Collection System for Side Discharge	17
Using the Grass Deflector	19
Transporting the Machine	19
Operating Tips	19
Maintenance	21
Recommended Maintenance Schedule(s)	21
Cleaning the Hood Screen	21
Cleaning the Bagger and Bags	22
Checking the Condition of the Belt	22
Inspecting the Blower Belt	22
Greasing the Idler Arm	22
Inspecting the Bagger Attachment	23
Inspecting the Mower Blades	23
Installing the Mower Blades	23
Storage	23
Troubleshooting	24

Safety

⚠ DANGER

The engine can become hot when operating. Severe burns can occur from contacting hot surfaces.

Allow engines, especially the muffler, to cool before touching.

⚠ DANGER

Debris, such as leaves, grass, or brush can catch fire. A fire in the engine area can cause personal injury and property damage.

- **Keep the engine and muffler area free of debris.**
- **Take care when opening the bagger cover to keep debris from falling onto the engine and muffler area.**
- **Allow the machine to cool before storing it.**
- Become familiar with the safe operation of the equipment, with the operator controls, and safety signs.
- Use extra care with grass catchers or other attachments. These can change the operating characteristics and the stability of the machine.
- Follow the manufacturer's recommendations for adding or removing wheel weights or counterweights to improve stability.
- Do not use a grass catcher on steep slopes. A heavy grass catcher could cause loss of control or overturn the machine.
- Slow down and use extra care on hillsides. Be sure to travel in the recommended direction on hillsides. Turf conditions can affect the stability of the machine. Use extreme caution while operating near drop-offs.
- Keep all movement on slopes slow and gradual. Do not make sudden changes in speed, directions or turning.
- The grass catcher can obstruct the view to the rear. Use extra care when operating in reverse.
- Use care when loading or unloading the machine into a trailer or truck.
- Never operate with the discharge deflector raised, removed or altered, unless using a grass catcher.
- Keep hands and feet away from moving parts. Do not make adjustments with the engine running.
- Stop the machine on level ground, disengage the drives, chock or block the wheels, shut off the engine, and remove the key before leaving

the operator's position for any reason, including emptying the grass catcher or unclogging the chute.

- If you remove the grass catcher, install any discharge deflector or guard that might have been removed to install the grass catcher. Do not

operate the machine without either the entire grass catcher or the grass deflector in place.

- Grass catcher components are subject to wear, damage and deterioration, which could expose moving parts or allow objects to be thrown. Frequently check components and replace with manufacturer's recommended parts, when necessary.

Safety and Instructional Decals



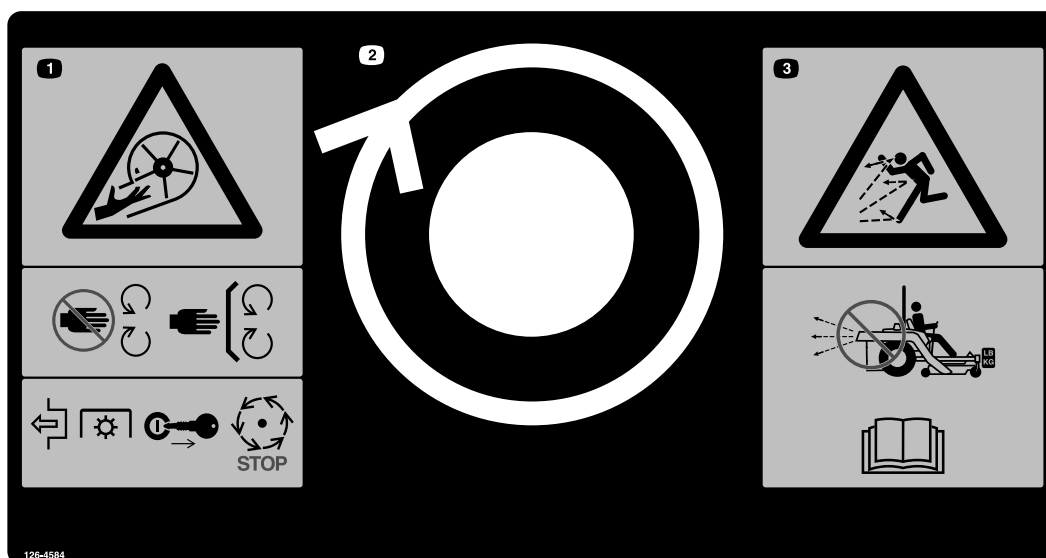
Safety decals and instructions are easily visible to the operator and are located near any area of potential danger. Replace any decal that is damaged or missing.



112-9028

decal112-9028

1. Warning—stay away from moving parts; keep all guards in place.



126-4584

decal126-4584

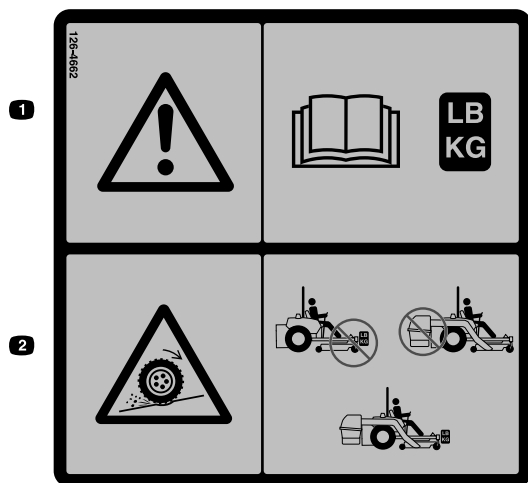
1. Impeller/Rotating blades hazard—keep hands away from moving parts. Keep all safety devices in place and working. Do not reach into the blower unless the rotation indicator has stopped. Disengage the PTO, shut off the engine, remove the key, and wait for all moving parts to stop.
2. Rotation indicator
3. Thrown objects hazard—high-speed discharge can cause injury or death. Do not run the blower without the entire collection system installed and latched. Read the *Operator's Manual*.



decal126-4659

126-4659

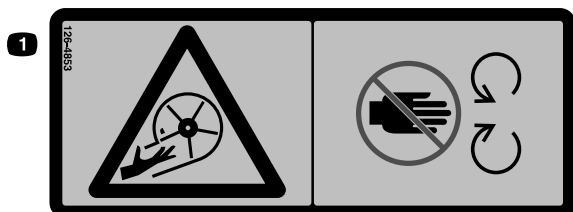
1. Warning—hot pulley; allow to cool.



decal126-4662

126-4662

1. Warning—read the *Operator's Manual* for the correct quantity of counterbalance weight(s).
2. Loss of traction and steering or reduced stability hazard—Ez Vac counterbalance weight(s) installed without the Ez Vac may cause loss of traction and steering control. The Ez Vac installed without the Ez Vac counterbalance weight(s) can cause reduced stability. Install weight(s) only when the Ez Vac is installed.



decal126-4853

126-4853

1. Impeller/Rotating blades hazard—keep hands away from moving parts. Keep all safety devices in place and working. Do not reach into the blower unless the rotation indicator has stopped.

Setup

Loose Parts

Use the chart below to verify that all parts have been shipped.

Procedure	Description	Qty.	Use
1	No parts required	–	Prepare the machine.
2	Weight assembly Bolt (3/8 x 6-1/2 inches) Bracket assembly Caster weight—20.4 kg (45 lb) Caster weight—9.1 kg (20 lb) Clevis pin Hairpin cotter Locknut (3/8 inch) Washer Bolt (3/8 x 8 inches)	2 2 2 2 6 2 2 4 2 2	Install the weights.
3	Blower belt (from Blower and Drive Kit) Knob (from Blower and Drive Kit) Belt cover (from Blower and Drive Kit) Blower assembly (from the Blower and Drive Kit) Spring (from the Blower and Drive Kit)	1 1 1 1 1	Install the blower assembly.
4	Lower mount bracket Bolt (3/8 x 2-1/2 inches) Thick washer Locknut (3/8 inch) Carriage bolt (3/8 x 3 inches)	2 6 5 8 2	Install the mount brackets.
5	Hood assembly Bag Rod-support assembly Thrust washer Bagger pin Flat washer Mount-pin lanyard Locknut (1/2 inch)	1 3 2 4 2 2 2 2	Install the hood assembly and bags.
6	Lower tube assembly Upper tube Hex-washer head bolt (#10 x 3/4 inch) Flat washer Locknut (#10)	1 1 3 3 3	Install the discharge tubes.
7	No parts required	–	Adjust the parking brake.
8	No parts required	–	Check the tire pressure.

Note: Determine the left and right sides of the machine from the normal operating position.

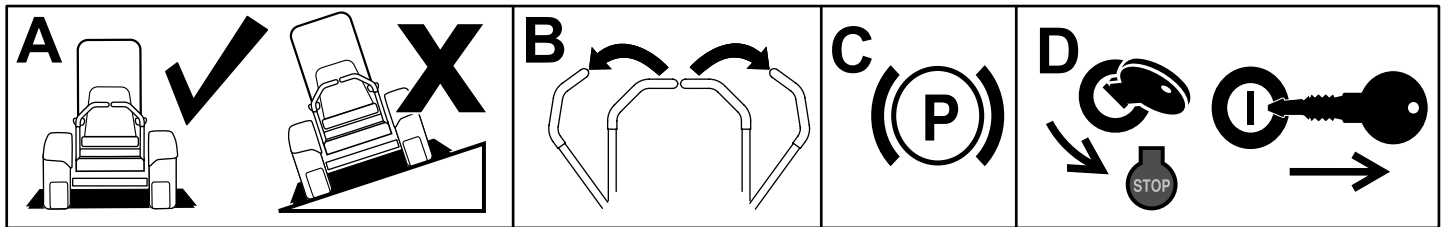
1

Preparing the Machine

No Parts Required

Procedure

1. Park the machine on a level surface.
2. Move the motion-control levers to the NEUTRAL-LOCK position.
3. Engage the parking brake.
4. Shut off the engine and remove the key.



g037289
g037289

Figure 3

2

Installing the Weights

Parts needed for this procedure:

2	Weight assembly
2	Bolt (3/8 x 6-1/2 inches)
2	Bracket assembly
2	Caster weight—20.4 kg (45 lb)
6	Caster weight—9.1 kg (20 lb)
2	Clevis pin
2	Hairpin cotter
4	Locknut (3/8 inch)
2	Washer
2	Bolt (3/8 x 8 inches)

Procedure

1. Insert the bolt (3/8 x 6-1/2 inches) into hole on the bottom side of the bracket and the rear of the removable 20.4 kg (45 lb) caster weight (Figure 4).
Carefully place the weight and bracket assembly onto the caster arm centering the hole of the weight over the caster wheel.
2. Secure the bottom of the bracket to the caster arm using a clevis pin and hairpin cotter (Figure 4).
3. Tighten the knob on the weight assembly until it is clamped securely to the caster arm (Figure 4).
4. Install 3 caster weights (9.1 kg (20 lb) over the weight assembly bolt and stack them securely onto the 20.4 kg (45 lb) caster weight (Figure 4).
5. Secure the rear of the weight assembly with a locknut (3/8 inch) as shown in Figure 4.
6. Install the bolt (3/8 x 8 inches) and washer through the top of the front holes of the weight assembly and secure it using a locknut (3/8 inch) as shown in Figure 4.
7. Repeat this procedure on the other side of the machine.

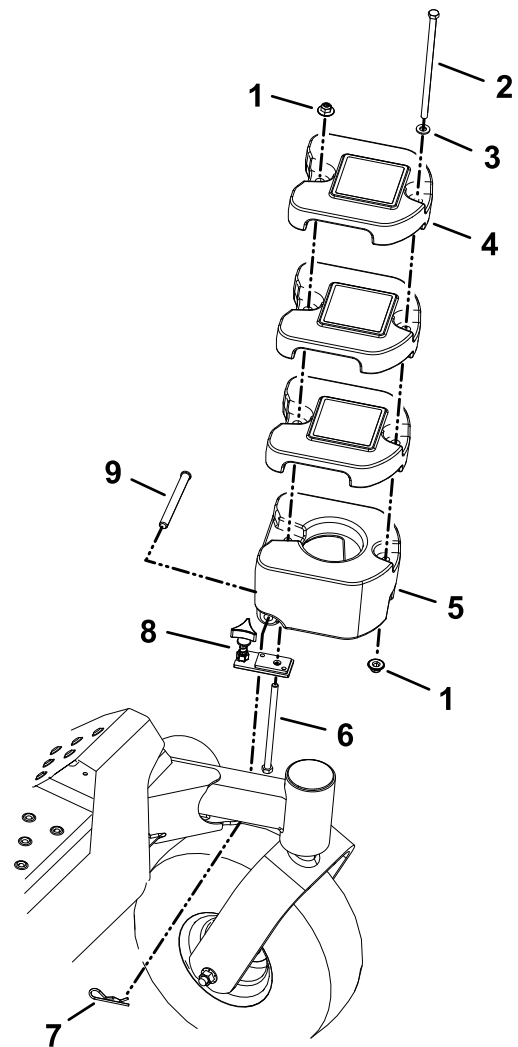


Figure 4

- | | |
|----------------------------------|------------------------------|
| 1. Locknut (3/8 inch) | 6. Bolt (3/8 x 6-1/2 inches) |
| 2. Bolt (3/8 x 8 inches) | 7. Hairpin cotter |
| 3. Washer | 8. Bracket assembly |
| 4. Caster weight—9.1 kg (20 lb) | 9. Clevis pin |
| 5. Caster weight—20.4 kg (45 lb) | |

g260769

3

Installing the Blower Assembly

Parts needed for this procedure:

1	Blower belt (from Blower and Drive Kit)
1	Knob (from Blower and Drive Kit)
1	Belt cover (from Blower and Drive Kit)
1	Blower assembly (from the Blower and Drive Kit)
1	Spring (from the Blower and Drive Kit)

Procedure

⚠ WARNING

An uncovered discharge opening could allow the lawn mower to throw objects toward you or bystanders, resulting in serious injury. Also, contact with the blade could occur.

- Do not operate the machine unless you install a cover plate, a mulch plate, or a grass chute and catcher.
- Ensure that you install the grass deflector when the grass chute and catcher are removed.

1. Remove the side discharge chute from the mower deck (Figure 5).

Note: Save all the hardware and the side discharge chute. Install the side discharge chute when the bagger and blower are removed.

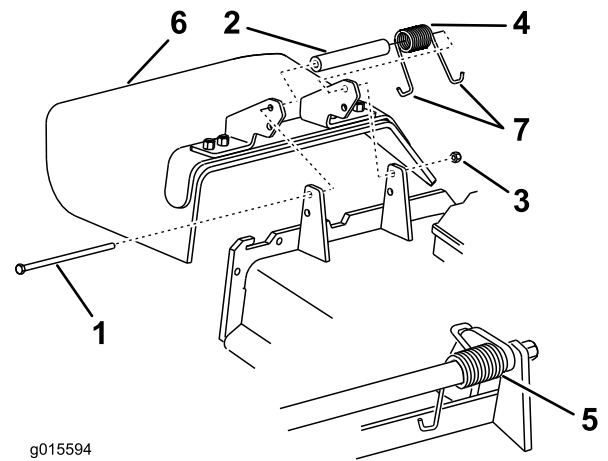


Figure 5

1. Bolt
2. Spacer
3. Locknut
4. Spring
5. Spring installed
6. Grass deflector
7. J-hook end of spring

2. Insert the blower pivot pin into the blower support and rotate the blower assembly inward toward the machine (Figure 6).

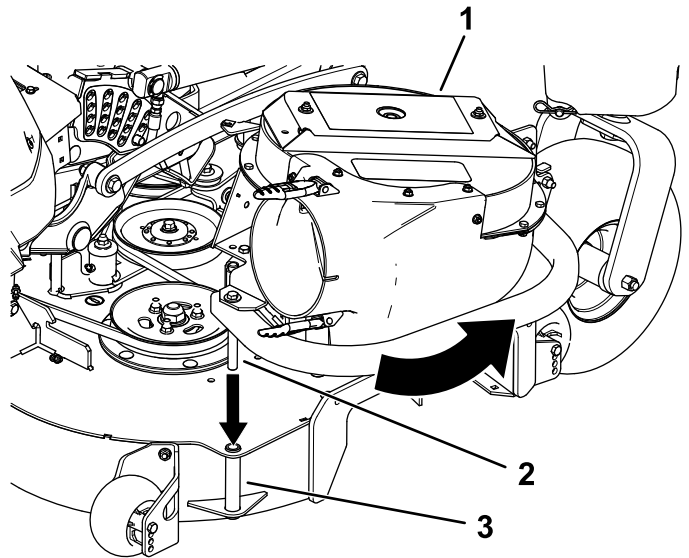
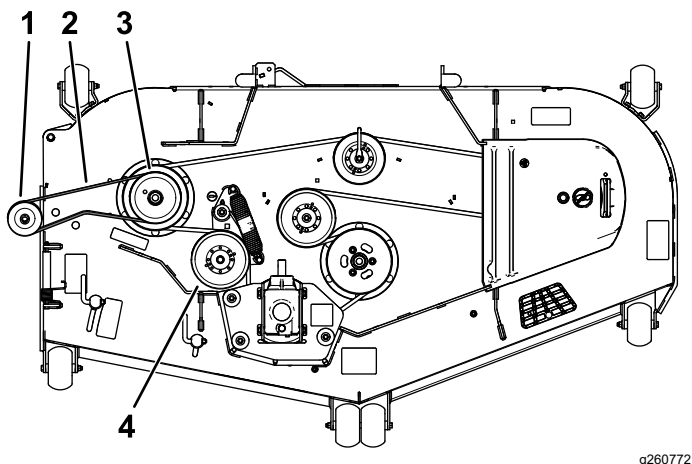


Figure 6

1. Blower assembly
2. Blower pivot pin
3. Blower support

3. Pull the spring-loaded idler back and install the belt over the deck pulley assembly ([Figure 7](#)).

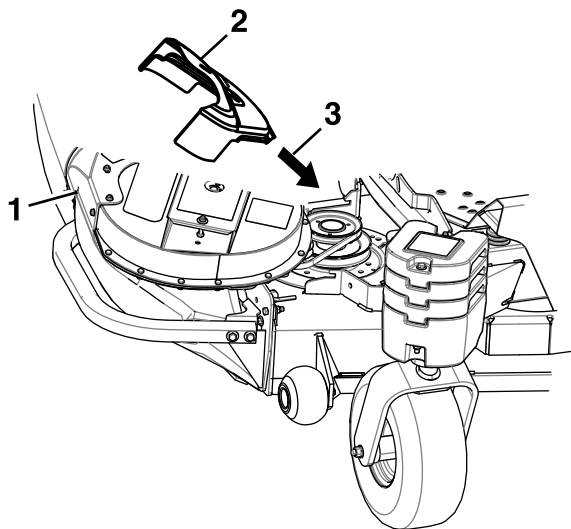


g260772

Figure 7

- | | |
|------------------|------------------------|
| 1. Blower pulley | 3. Deck pulley |
| 2. Blower belt | 4. Spring-loaded idler |

4. Position the belt cover at an angle and slide it under the deck frame ([Figure 8](#)).

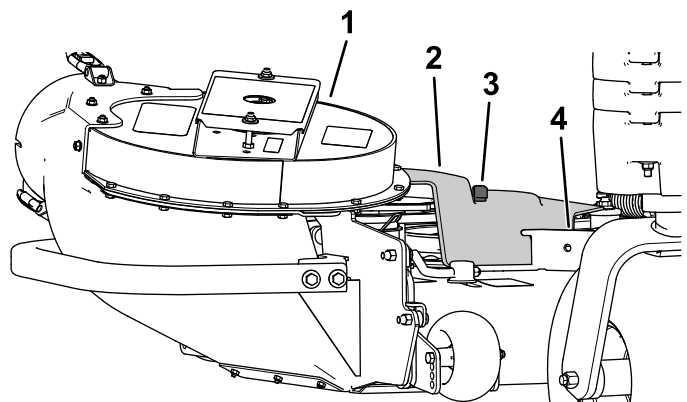


g242180

Figure 8

- | | |
|---------------|----------------|
| 1. Blower | 3. Mower frame |
| 2. Belt cover | |

5. Push down on the rear of the cover and slide it backward under the blower.
6. With the belt cover resting on the deck, slide it forward until it seats under both lips on the deck ([Figure 9](#)).



g260774

Figure 9

- | | |
|---------------|-------------|
| 1. Blower | 3. Knob |
| 2. Belt cover | 4. Deck lip |

7. Secure the belt cover using the knob ([Figure 9](#)).

4

Installing the Mount Brackets

Parts needed for this procedure:

2	Lower mount bracket
6	Bolt (3/8 x 2-1/2 inches)
5	Thick washer
8	Locknut (3/8 inch)
2	Carriage bolt (3/8 x 3 inches)

Procedure

1. Loosely install a lower mount bracket on the left and right side of the rear bumper cross tube (Figure 10).
2. Align the mounting holes and loosely install the brackets using 2 bolts (3/8 x 2-1/2 inches), 2 thick washers, and 2 locknuts (3/8 inch) as shown in Figure 10.

Note: You do not install a thick washer on the left, outer side (Figure 10).

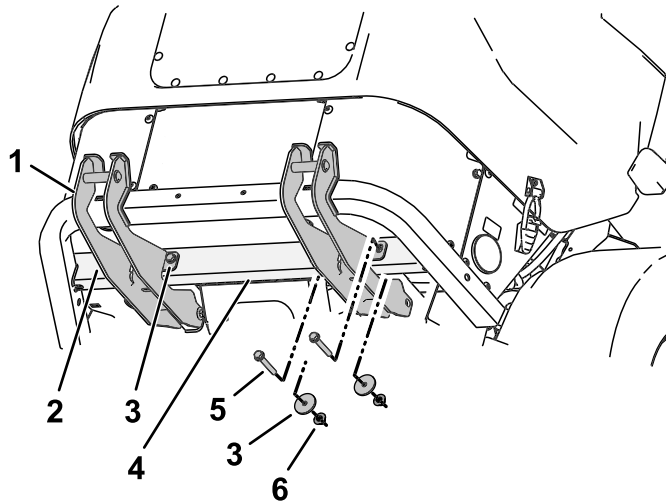


Figure 10

- | | |
|------------------------------|------------------------------|
| 1. Lower mount bracket | 4. Rear bumper cross tube |
| 2. No washer installed here. | 5. Bolt (3/8 x 2-1/2 inches) |
| 3. Thick washer | 6. Locknut (3/8 inch) |

3. Loosely install 1 carriage bolt (3/8 x 3 inches), 1 thick washer, and 1 locknut (3/8 inch) into each lower mount bracket through the front of the rear bumper (Figure 11).

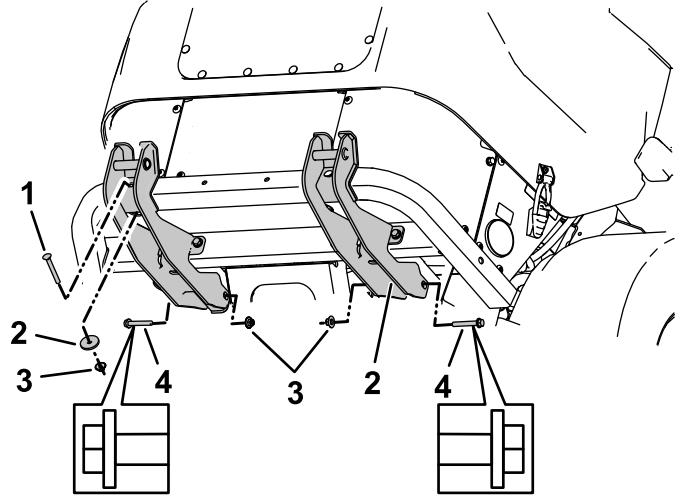


Figure 11

- | | |
|-----------------------------------|------------------------------|
| 1. Carriage bolt (3/8 x 3 inches) | 3. Locknut (3/8 inch) |
| 2. Thick washer | 4. Bolt (3/8 x 2-1/2 inches) |

4. Loosely install 2 bolts (3/8 x 2-1/2 inches) and 2 locknuts (3/8 inch) at the front of the frame brackets (Figure 11).

Note: The head of the bolts should face outward on each bracket (Figure 11).

5. Tighten all the fasteners.

5

Installing the Hood Assembly and Bags

Parts needed for this procedure:

1	Hood assembly
3	Bag
2	Rod-support assembly
4	Thrust washer
2	Bagger pin
2	Flat washer
2	Mount-pin lanyard
2	Locknut (1/2 inch)

Procedure

Note: Use 2 people for this procedure.

1. Position the hood assembly on its back.
2. Pick up the bagger frame legs and hook the notch onto the lower bagger-mount bar (Figure 12).

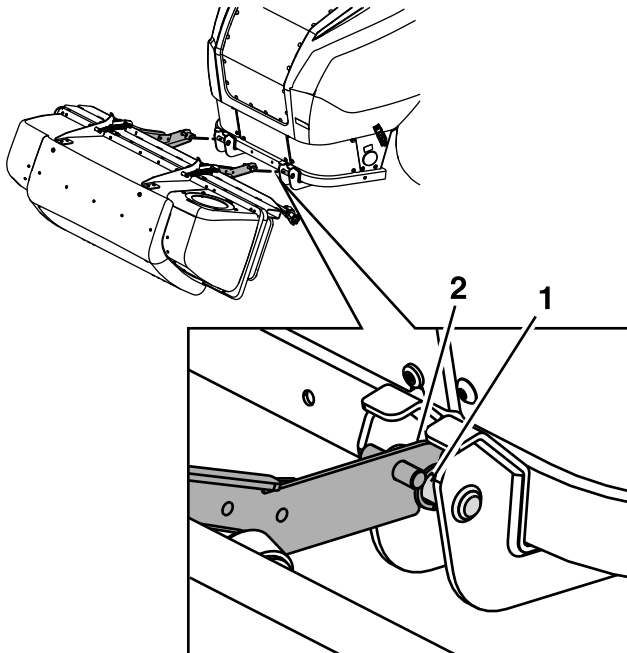


Figure 12

1. Lower bagger-mount bar
2. Frame leg

3. Lift the hopper assembly and pivot it upward toward the rear of the machine.
4. Secure the rod-support assembly to each side of the rear frame using 2 bagger pins, 2 flat washers, 4 thrust washers, 2 mount-pin lanyards, and 2 locknuts (1/2 inch) as shown in Figure 13.

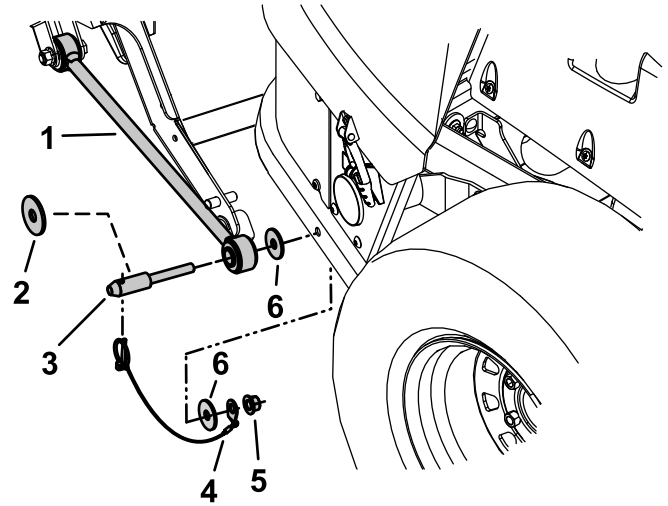


Figure 13

1. Rod-support assembly
2. Flat washer
3. Bagger pin
4. Mount-pin lanyard
5. Locknut (1/2 inch)
6. Thrust washer

5. Raise the hood and install the bag assemblies by sliding the bag frame hooks onto the retaining slots on the hopper frame.
6. Close and latch the hood.

6

Installing the Discharge Tubes

Parts needed for this procedure:

1	Lower tube assembly
1	Upper tube
3	Hex-washer head bolt (#10 x 3/4 inch)
3	Flat washer
3	Locknut (#10)

Procedure

1. Disengage the PTO and set the parking brake.
2. Shut off the engine, remove the key, and wait for all moving parts to stop before leaving the operating position.
3. Lower the machine deck to the lowest height-of-cut position.
4. For 60-inch decks, shorten the upper tube as follows:
 - A. Locate the 3 holes in the upper tube. Measure 16.5 cm (6-1/2 inches) up from the end of the tube and mark the location in all 3 areas (Figure 14).

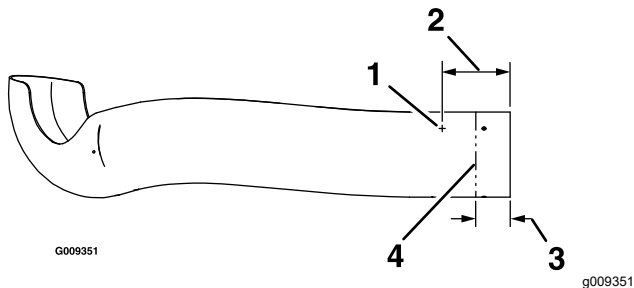


Figure 14

1. New hole location
 2. Measure 16.5 cm (6-1/2 inches).
 3. Measure at 3 locations—76 to 89 mm (3-1/2 inches).
 4. Cut the tube here.
-
- B. Drill 3 holes (4.8 mm or 3/16 inch) as shown in Figure 14.
 - C. Measure at 3 locations—76 to 89 mm (3 to 3-1/2 inches) from the end of the tube, create the marks, and apply masking tape around the tube as a guide (Figure 14).
 - D. Carefully cut the tube and discard the end.

5. Install the lower tube into the upper tube (Figure 15).

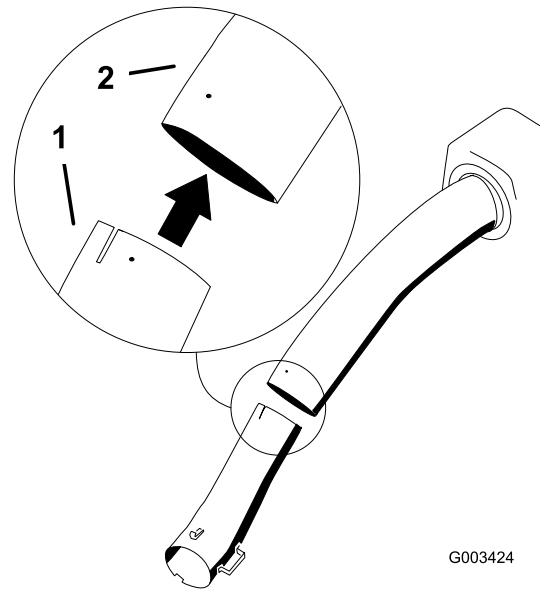


Figure 15

1. Lower tube
2. Upper tube

6. Insert the upper tube into the hopper seal. Push in, then pull out, so that the seal is extended outward.
7. Align the dimple on the upper tube with the end of the hopper seal and center it between the 2 screws (Figure 16).

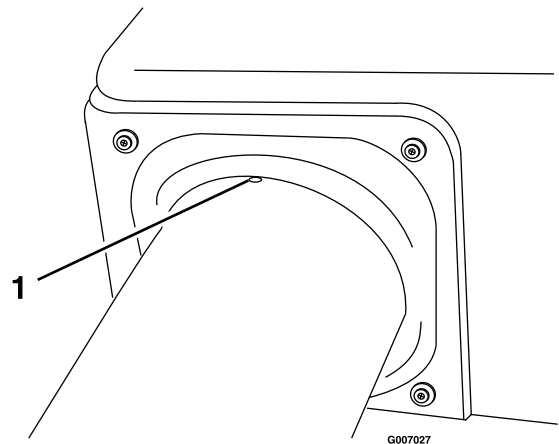
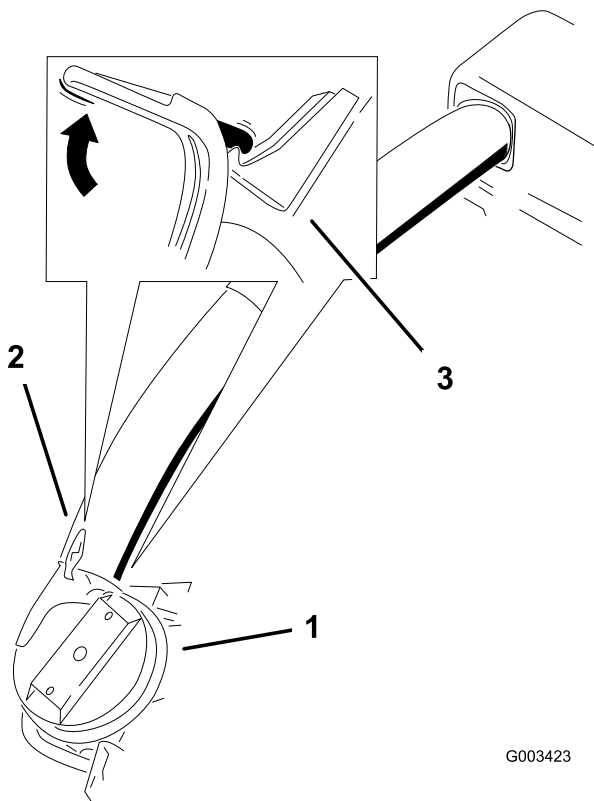


Figure 16

1. Dimple
-
8. Slide the lower tube onto the boot and latch them together (Figure 17).

Note: There is a latch on the top and bottom of the blower housing.



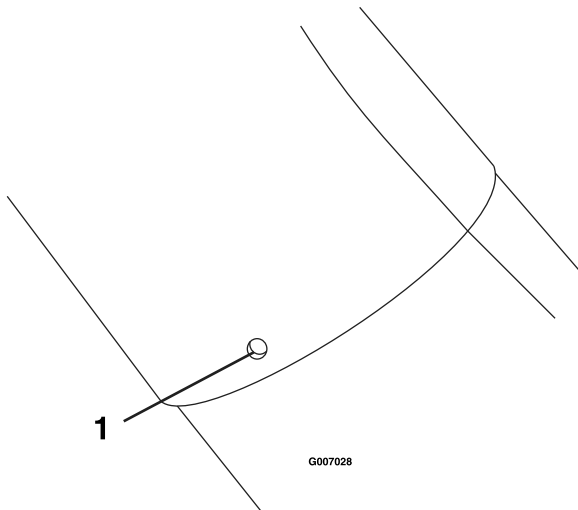
G003423

g003423

Figure 17

1. Blower assembly
2. Lower tube
3. Latch (triple bagger shown)

9. Drill the 5.6 mm (7/32 inch) diameter holes in the lower tube using the upper tube holes as the reference ([Figure 18](#)).



G007028

g007028

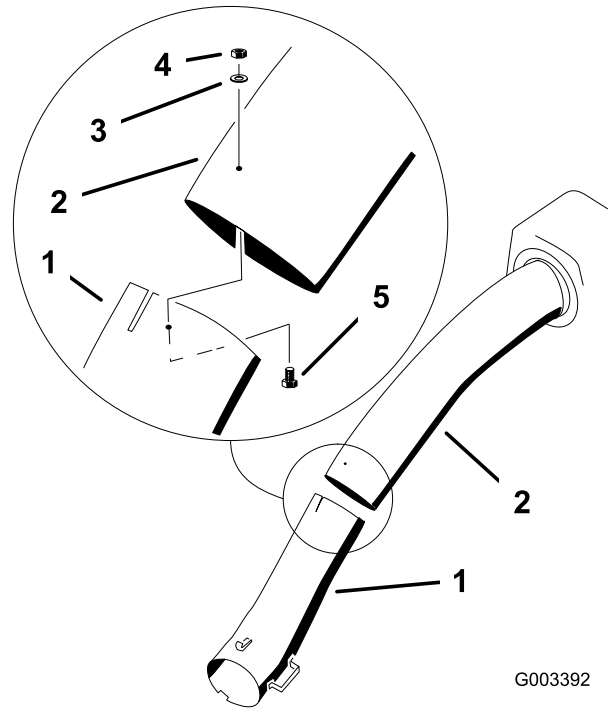
Figure 18

1. Drill the holes here.

10. Remove the tubes from the machine and assemble the upper and lower tubes using 3 hex-washer head bolts (#10 x 3/4 inch), 3 flat

washers, and 3 locknuts (#10) as shown in [Figure 19](#).

Install the bolt head inside the tube to provide minimum obstruction to flow. Ensure that the upper and the lower ends are oriented properly as you assemble the tubes (the parting lines should roughly line up).



G003392

g003392

Figure 19

1. Lower tube
2. Upper tube
3. Flat washer
4. Locknut (#10)
5. Hex-washer head bolt (#10 x 3/4 inch)

11. With the bagger end in first, install the lower tube onto the blower housing and secure it with the latches.

7

Adjusting the Parking Brake

No Parts Required

Procedure

Ensure that the parking brake is adjusted properly; refer to your *Operator's Manual*.

8

Checking the Tire Pressure

No Parts Required

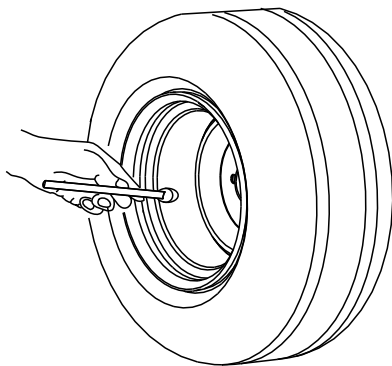
Procedure

Note: Increase the tire pressure due to the additional weight.

Check and increase the air pressure in the front caster wheels and rear tires (Figure 20).

Air pressure in the rear tires: 138 kPa (20 psi)

Air pressure in the front caster wheels: 172 kPa (25 psi)



G001055

Figure 20

g001055

Operation

Note: Determine the left and right sides of the machine from the normal operating position.

Important: Engage the parking brake when you leave the machine unattended.

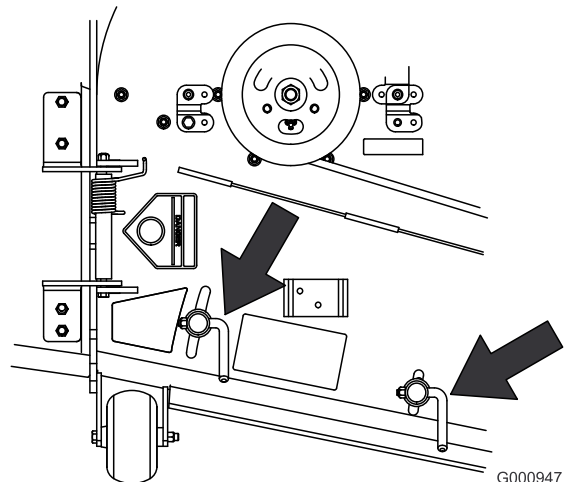
⚠ WARNING

To avoid personal injury, follow these procedures:

- Become familiar with all operating and safety instructions in the *Operator's Manual* for the mower before using this attachment.
- Never remove the discharge tube, bags, bagger top, or the chute while the engine is running.
- Always shut off the engine, wait for all moving parts to stop, and remove the key before clearing an obstruction from the bagging system.
- Never do maintenance or repairs while the engine is running.

Positioning the Adjustable Baffle

Adjust the baffle to position B (middle position) for bagging; refer to the *Operator's Manual* for the machine.



G000947

g000947

Figure 21

Emptying the Grass Bags

Grass bags are heavy when full. Be careful when lifting or handling a grass bag that is full.

1. Park the machine on a level surface.
2. Move the motion-control levers to the NEUTRAL-LOCK position.
3. Engage the parking brake.
4. Shut off the engine and remove the key.
5. Chock the tires if on a slope.
6. Unlatch the bagger latch.
7. Open the bagger hood.
8. Compress the debris into the bags. With both hands, lift up on the bag and unhook it from the bagger bracket.
9. Grab the handle on the bottom of the bag and tip it over to empty the bag (Figure 22).

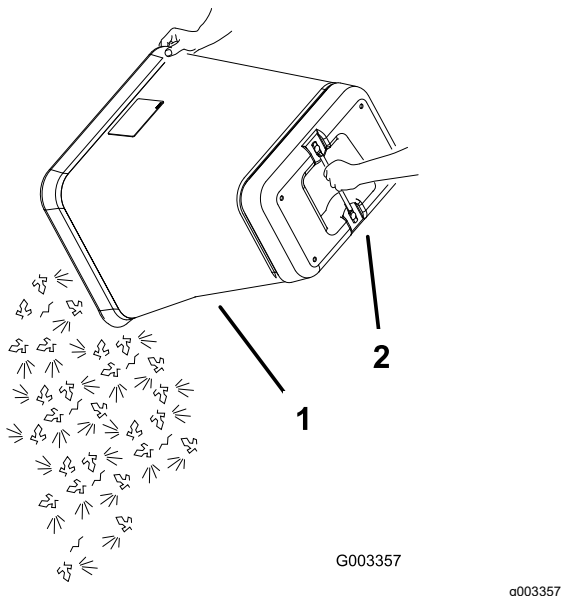


Figure 22

1. Bag
2. Bottom handle

10. Repeat for the other bags.
11. Install the bag tab into the notch in the bagger support frame.

Note: Repeat this step for the other bags.

12. Lower the bagger hood over the bags.
13. Latch the bagger hood.

Clearing Obstructions from the Bagger System

⚠ WARNING

When the bagger is in operation, the blower can be rotating and cut off or injure hands.

- Before adjusting, cleaning, repairing and inspecting the blower, or unclogging the chute, shut off the engine, wait for all moving parts to stop, and remove the key.
- Use a stick, not your hands, to remove an obstruction from the blower and tube.
- Keep your face, hands, feet, and any other part of your body or clothing away from concealed, moving, or rotating parts.

1. Park the machine on a level surface.
 2. Move the motion-control levers to the NEUTRAL-LOCK position.
 3. Engage the parking brake.
 4. Shut off the engine and remove the key.
 5. Empty the bags.
 6. Unlatch the lower tube.
 7. Remove the tubes from the bagger.
 8. Use a stick or similar object, not your hands, to remove and clear the obstruction from the tube assembly.
- Note:** In most cases, the debris can be shaken out of the tubes.
9. If the blower assembly is plugged, unlatch the bagger blower assembly, remove the belt, and swing it open.
 10. Use a stick or similar object, not your hands, to remove and clear the obstruction from the blower assembly.
 11. After you remove the obstruction, install the complete bagger system and resume operation.

Removing the Collection System for Side Discharge

⚠ CAUTION

Failing to remove the front bagger weights and operating the machine without the bagger attachment may cause an unstable condition which could result in a loss of control.

- Always remove the front weights when removing the bagger attachment.
- Never operate the machine without the bagger attachment and the front weights still installed.

1. Park the machine on a level surface.
2. Move the motion-control levers to the NEUTRAL-LOCK position.
3. Engage the parking brake.
4. Shut off the engine and remove the key.
5. Chock the tires and empty the hopper.
6. Remove the discharge tube by releasing the latches at the blower. Slide the tube off the blower outlet and remove the upper end from the hopper (Figure 23).

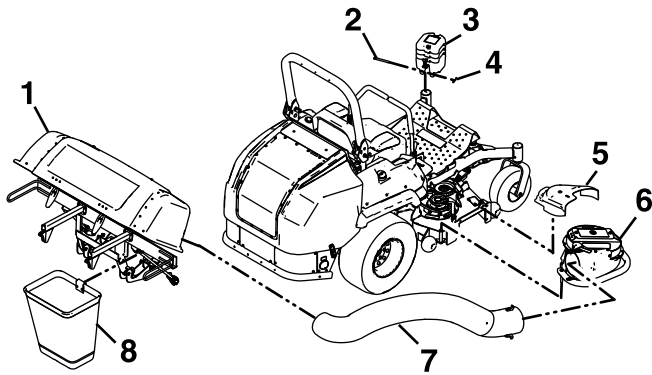


Figure 23

g242330

- | | |
|----------------------|---------------|
| 1. Hopper | 5. Belt cover |
| 2. Clevis pin | 6. Blower |
| 3. Caster arm weight | 7. Tubes |
| 4. Hairpin | 8. Bag |

7. Remove the knob from the belt-cover bracket and take off the belt cover (Figure 24).

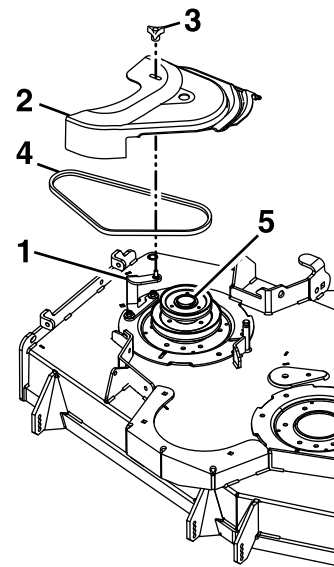


Figure 24

g242158

- | | |
|-----------------------|----------------|
| 1. Belt-cover bracket | 4. Belt |
| 2. Belt cover | 5. Deck sheave |
| 3. Knob | |

⚠ CAUTION

The deck sheave becomes hot. Touching a hot deck sheave can cause severe burns.

Allow the deck sheave to cool completely before removing the belt.

8. Pull the idler-release handle and remove the belt from the upper groove of the deck sheave.
9. Unlatch the front end of the blower, pivot the blower back, and lift it off the deck (Figure 25).

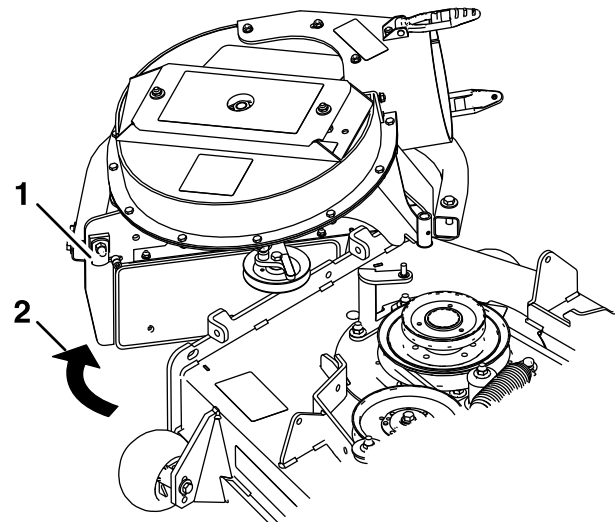


Figure 25

g242410

- | |
|---|
| 1. Blower latch |
| 2. Pivot the blower away from the deck. |

10. Install the discharge deflector using the parts shown in [Figure 26](#).

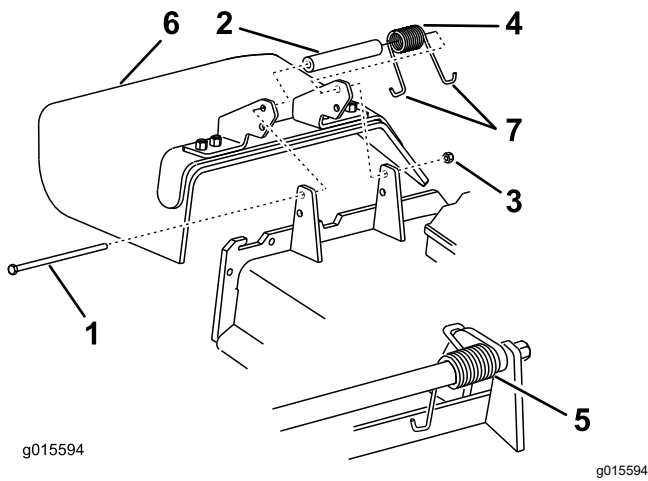


Figure 26

- | | |
|------------|-------------------------|
| 1. Bolt | 5. Spring installed |
| 2. Spacer | 6. Grass deflector |
| 3. Locknut | 7. J-hook end of spring |
| 4. Spring | |

⚠ WARNING

An uncovered discharge opening could allow the lawn mower to throw objects at you or bystanders, resulting in serious injury. Also, contact with the blade could occur.

- **Never operate the lawn mower unless you install a cover plate, a mulch plate, or a grass chute and catcher.**
- **Ensure that the grass deflector is in the down position.**

- E. Remove the bracket assembly and all mounting hardware from the caster arm.
- F. Repeat this procedure on the other side of the machine.

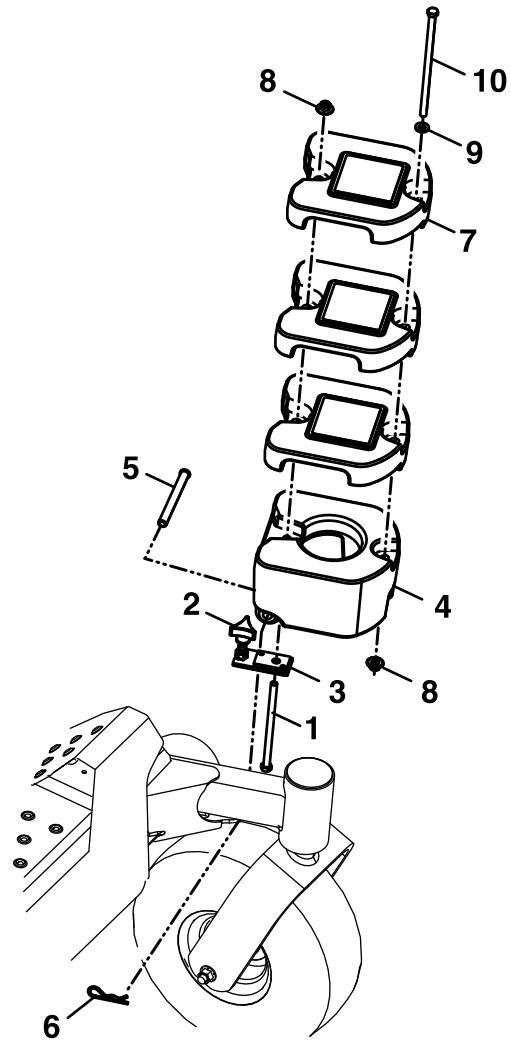


Figure 27

11. Install the plastic belt cover and tighten the knobs.
12. Remove the bags from the hopper assembly by opening the hopper and lifting up the rear of the bag and unhooking the front clip.
13. Remove the hopper assembly.
14. Remove the caster weights as follows:
 - A. Remove the locknut (3/8 inch) from the bottom of the 20.4 kg (45 lb) weight mounted to the caster arm ([Figure 27](#)).
 - B. Remove the bolt (3/8 x 8 inches) and washer ([Figure 27](#)).
 - C. Remove the locknut (3/8 inch) from the top 9.1 kg (20 lb) caster weight ([Figure 27](#)).
 - D. Carefully lift and remove each weight from the caster arms.

- | | |
|----------------------------------|---------------------------------|
| 1. Bolt (3/8 x 6-1/2 inches) | 6. Hairpin cotter |
| 2. Knob | 7. Caster weight—9.1 kg (20 lb) |
| 3. Bracket | 8. Locknut (3/8 inch) |
| 4. Caster weight—20.4 kg (45 lb) | 9. Washer |
| 5. Clevis pin | 10. Bolt (3/8 x 8 inches) |

15. Remove the caster weights by loosening the clamping knobs until you can move the weight relative to the caster arm. Remove the hairpin cotters and clevis pins that secure the weights to the caster arms. Carefully lift the weights off of the caster arms.

Using the Grass Deflector

⚠ DANGER

Without the grass deflector, discharge cover, or complete grass catcher assembly mounted in place, you and others are exposed to blade contact and thrown debris. Contact with rotating mower blade(s) and thrown debris will cause injury or death.

- Always install the grass deflector when removing the bagger and changing to side discharge mode.
- If the grass deflector is ever damaged, replace it immediately. The grass deflector routes material down toward the turf.
- Never put your hands or feet under the mower deck.
- Never try to clear the discharge area or mower blades unless you move the power take-off (PTO) to the OFF position, rotate the ignition key to off and remove the key.
- Never use your hands to clear the discharge area. Use a stick or similar object to clear the discharge area.

Transporting the Machine

Do not leave grass or debris in the bagger while transporting the machine.

⚠ DANGER

Transporting the machine with grass or debris in the bagger can damage the machine.

Do not leave grass or debris in the bagger while transporting the machine.

Operating Tips

Tips for Bagging

Remembering the Size

Remember that the machine is longer and wider with this attachment installed. By turning too sharply in confined places you may damage the attachment.

Trimming

Always trim with the left side of the mower. Do not trim with the right side of the mower because you could damage the bagger chute and discharge tube.

Cutting Height

Do not set the mower cutting height too low because long grass surrounding the mower can prevent air from getting under the mower and entering the bagging system. If enough air does not get under the mower, the bagging system will plug.

Cutting Frequency

Cut the grass often, especially when it grows rapidly. You will have to cut your grass twice if it gets excessively long.

Cutting Technique

For best lawn appearance, be sure to slightly overlap the mower into the previously cut area. This helps reduce the load on the engine and reduces the chance of plugging the chute and discharge tube.

Bagging Speed

Most often you will bag with the mower throttle in the Fast position and drive at a normal ground speed. However, in extremely dry and dusty grass, you may want to slightly reduce the throttle speed and increase the ground speed of the mower. The bagging system may plug if you drive too fast and the engine speed gets too slow. On hills it may be necessary to slow the mower ground speed. This helps maintain the engine speed and bagging efficiency. Mow downhill whenever possible.

⚠ CAUTION

As the bagger fills, extra weight is added to the back of the machine. If you stop and start suddenly on hills, you may lose steering control or the machine may tip.

- Do not start or stop suddenly when going uphill or downhill. Avoid uphill starts.
- If you do stop the machine when going uphill, disengage the blade control. Then back down the hill using a slow speed.
- Avoid sudden turns or rapid speed changes on slopes.
- Do not operate the machine without the bagger attachment and the front weights still installed.

Bagging Long Grass

Excessively long grass is heavy and may not be propelled completely into the grass bags. If this happens, the discharge tube and chute may plug. To avoid plugging the bagging system, mow the grass

at a high height of cut, then lower the mower to your normal cutting height and repeat the bagging process.

Bagging Wet Grass

Always try to cut grass when it is dry because your lawn will have a neat appearance. If you must cut wet grass, use the conventional side discharge feature of the mower. Several hours later, when the clippings are dry, install the complete bagger attachment and vacuum up the grass clippings.

Signs of Plugging

As you are bagging, a small amount of grass clippings normally blow out the front of the mower. An excessive amount of clippings blowing out indicates that the bags are full or the system is plugged.

Maintenance

Recommended Maintenance Schedule(s)

Maintenance Service Interval	Maintenance Procedure
After the first 8 hours	<ul style="list-style-type: none">• Inspect the blower belt.
After the first 10 hours	<ul style="list-style-type: none">• Inspect the bagger.
Before each use or daily	<ul style="list-style-type: none">• Clean the hood screen.• Clean the bagger.
Every 25 hours	<ul style="list-style-type: none">• Inspect the blower belt.• Grease the idler arm.
Every 50 hours	<ul style="list-style-type: none">• Check the condition of the belt.
Before storage	<ul style="list-style-type: none">• Inspect the bagger.

⚠ CAUTION

If you leave the key in the ignition switch, someone could accidentally start the engine and seriously injure you or other bystanders.

Remove the key from the ignition and disconnect the wire from the spark plug before you do any maintenance. Set the wire aside so that it does not accidentally contact the spark plug.

⚠ DANGER

Engines can become hot when they are operating. Severe burns can occur from contacting hot surfaces.

Allow engines, especially the muffler, to cool before touching.

⚠ DANGER

Debris, such as leaves, grass, or brush can catch fire. A fire in the engine area can cause personal injury and property damage.

- Keep the engine and muffler area free of debris accumulation.
- Take care when opening the bagger cover to keep debris from falling onto the engine and muffler area.
- Allow the machine to cool before storing it.

Cleaning the Hood Screen

Service Interval: Before each use or daily

The screens need to be cleaned before each use. In wet grass they will need to be cleaned more often.

1. Park the machine on a level surface.
2. Move the motion-control levers to the NEUTRAL-LOCK position.
3. Engage the parking brake.
4. Shut off the engine and remove the key.
5. Open the bagger hood.

6. Clean the debris from the screen.
7. Close the bagger hood.

Cleaning the Bagger and Bags

Service Interval: Before each use or daily

Clean the bagger daily.

- 1. Wash the inside and outside of the bagger hood, bags, tube, and the underside of the mower deck. Use a mild automotive detergent to remove dirt.
- 2. Remove matted grass from all parts.
- 3. After washing all the parts, let them dry thoroughly.

Note: With all parts installed, start and run the machine for a minute to dry them.

Checking the Condition of the Belt

Service Interval: Every 50 hours

- 1. Park the machine on a level surface.
- 2. Move the motion-control levers to the NEUTRAL-LOCK position.
- 3. Engage the parking brake.
- 4. Shut off the engine and remove the key.
- 5. Inspect the belt for damage or wear. Replace the belt with one of the following:

Deck	Part No.
60-inch deck	103-0866
72-inch deck	103-0867

Inspecting the Blower Belt

Service Interval: After the first 8 hours

Every 25 hours

Check belts for cracks, frayed edges, burn marks or any other damage. Replace damaged belts.

Greasing the Idler Arm

Service Interval: Every 25 hours

Grease the bagger belt idler arm (Figure 28) every 25 hours.

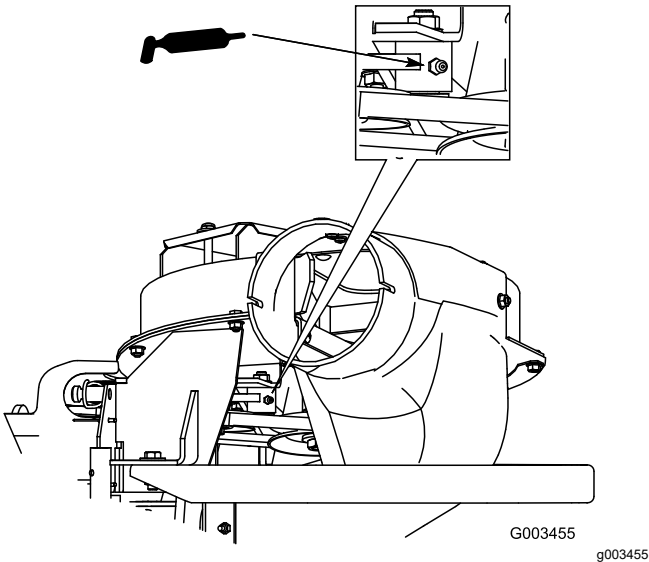


Figure 28

Inspecting the Bagger Attachment

Service Interval: After the first 10 hours

Before storage

1. Check the chute, discharge tube, and the bagger top. Replace these parts if they are cracked or broken.
2. Tighten all nuts, bolts, and screws.
3. Inspect all the fasteners and latches; replace any that are missing or damaged.
4. Inspect the grass bags for deterioration.

⚠ WARNING

You or bystanders could be severely injured by flying debris or thrown objects that may pass through torn, worn, or deteriorated grass bags.

- Check the grass bags for holes, rips, wear, and other deterioration.
- If the bag has deteriorated, install new grass bags supplied by the manufacturer of this bagger attachment.

Inspecting the Mower Blades

1. Inspect the mower blades regularly and whenever a blade strikes a foreign object.
2. If blades are badly worn or damaged, install new blades. Refer to your machine *Operator's Manual* for complete blade maintenance.

Installing the Mower Blades

In most mowing conditions, the standard high-lift blades provide the best bagging performance.

The Toro Atomic blade is recommended for bagging leaves in dry conditions. In dry dusty conditions, the medium lift or low lift blades will reduce dust and dirt blowout while providing effective bagging air flow.

Contact an Authorized Service Dealer for the proper blades for different mowing conditions.

Refer to the machine's *Operator's Manual* for more information on installing blades.

Storage

1. Clean the bagger attachment; refer to [Cleaning the Bagger and Bags \(page 22\)](#).
2. Inspect the bagger attachment for damage; refer to [Inspecting the Bagger Attachment \(page 23\)](#).
3. Ensure that the bags are empty and thoroughly dry.
4. Check the belt for wear or cracks.
5. Store the machine in a clean, dry place, out of direct sunlight. If you must store the machine outside, cover it with a weatherproof cover. This protects the plastic parts and extends the life of the machine.

Troubleshooting

Problem	Possible Cause	Corrective Action
There is abnormal vibration.	<ol style="list-style-type: none"> 1. The cutting blade(s) is/are bent or unbalanced. 2. The blade-mounting bolt is loose. 3. The blower pulley or pulley assembly is loose. 4. The bagger belt is worn. 5. The blower fan blade(s) is/are bent or unbalanced. 	<ol style="list-style-type: none"> 1. Install new cutting blade(s). 2. Tighten the blade-mounting bolt. 3. Tighten the appropriate pulley. 4. Replace the belt. 5. Contact an Authorized Service Dealer.
There is reduced bagging performance.	<ol style="list-style-type: none"> 1. The engine speed is low. 2. The bagger-hood screen is plugged. 3. Loose bagger belt. 4. The blower or tube is plugged. 5. The bags are full. 	<ol style="list-style-type: none"> 1. Always operate the bagger at full throttle. 2. Remove the debris, leaves or grass clippings from the screen. 3. Replace the bagger belt. 4. Locate and remove the plugged debris. 5. Empty the bags.
The blower and tubes plug too frequently.	<ol style="list-style-type: none"> 1. The bags are too full. 2. The engine speed is low. 3. The grass is too wet. 4. The grass is too long. 5. The screen in the hood is plugged. 6. The ground speed is too fast. 7. The bagger belt is worn. 	<ol style="list-style-type: none"> 1. Dump the bags more frequently. 2. Always operate the bagger at full throttle. 3. Cut the grass when it is dry. 4. Cut no more than 51 to 76 mm (2 to 3 inches) or 1/3 of the grass height, which ever is less. 5. Remove the debris, leaves or grass clippings from the screen. 6. Drive slower at full throttle. 7. Replace the belt.
There is debris blowout.	<ol style="list-style-type: none"> 1. The bags are too full. 2. The ground speed is too fast. 3. The mower deck is not leveled. 	<ol style="list-style-type: none"> 1. Dump the bags more frequently. 2. Drive slower at full throttle. 3. See the mower operator's manual for leveling the mower deck.
The blower impeller does not spin freely.	<ol style="list-style-type: none"> 1. The blower is plugged. 2. The impeller is not aligned. 	<ol style="list-style-type: none"> 1. Remove the debris, leaves or grass clippings from the blower impeller. 2. Contact an Authorized Service Dealer.

Notes:

Notes:

Declaration of Incorporation

The Toro Company, 8111 Lyndale Ave. South, Bloomington, MN, USA declares that the following unit(s) conform(s) to the directives listed, when installed in accordance with the accompanying instructions onto certain Toro models as indicated on the relevant Declarations of Conformity.

Model No.	Serial No.	Product Description	Invoice Description	General Description	Directive
78560	400000000 and up and Up	Triple Bagging System, Z Master Professional 7500-D Series Riding Mower with 60in or 72in TURBO FORCE Side Discharge Mower	TRIPLE BAG ASSEMBLY	Bagger	2006/42/EC, 2000/14/EC

Relevant technical documentation has been compiled as required per Part B of Annex VII of 2006/42/EC.

We will undertake to transmit, in response to requests by national authorities, relevant information on this partly completed machinery. The method of transmission shall be electronic transmittal.

This machinery shall not be put into service until incorporated into approved Toro models as indicated on the associated Declaration of Conformity and in accordance with all instructions, whereby it can be declared in conformity with all relevant Directives.

Certified:



John Heckel
Engineering Director
8111 Lyndale Ave. South
Bloomington, MN 55420, USA
March 23, 2023

Authorized Representative:

Marcel Dutrieux
Manager European Product Integrity
Toro Europe NV
Nijverheidsstraat 5
2260 Oevel
Belgium

UK Declaration of Incorporation

The Toro Company, 8111 Lyndale Ave. South, Bloomington, MN, USA declares that the following unit(s) conform(s) to the directives listed, when installed in accordance with the accompanying instructions onto certain Toro models as indicated on the relevant Declarations of Conformity.

Model No.	Serial No.	Product Description	Invoice Description	General Description	Regulation
78560	400000000 and up and Up	Triple Bagging System, Z Master Professional 7500-D Series Riding Mower with 60in or 72in TURBO FORCE Side Discharge Mower	TRIPLE BAG ASSEMBLY	Bagger	S.I. 2008 No. 1597, S.I. 2001 No. 1701

Relevant technical documentation has been compiled as required per Schedule 10 of S.I. 2008 No. 1597.

We will undertake to transmit, in response to requests by national authorities, relevant information on this partly completed machinery. The method of transmission shall be electronic transmittal.

This machinery shall not be put into service until incorporated into approved Toro models as indicated on the associated Declaration of Conformity and in accordance with all instructions, whereby it can be declared in conformity with all relevant Directives.

This declaration has been issued under the sole responsibility of the manufacturer.
The object of the declaration is in conformity with relevant UK legislation.

Authorized Representative:

Marcel Dutrieux
Manager European Product Integrity
Toro U.K. Limited
Spellbrook Lane West
Bishop's Stortford
CM23 4BU
United Kingdom



John Heckel
Engineering Director
8111 Lyndale Ave. South
Bloomington, MN 55420, USA
March 23, 2023