



## Snowthrower Dingo<sup>®</sup> and Dingo TX

Model No. 22456 - 240000001 and up.

### Parts Catalog

---

#### Ordering Replacement Parts

To order replacement parts, please supply: the part number, the quantity, and the description of each part desired.

#### Understanding Reference Numbers

Each identified part in an illustration has a reference number. The reference number for a part also appears in the parts list, along with other information about the part.

This catalog uses two special reference number formats, one to indicate parts in a service assembly and another to indicate the quantity of a given part in an illustration.

#### Service Assembly Reference Numbers

Parts in service assemblies have reference numbers in the form **a:b**. The **a** represents the reference number of the entire service assembly and the **b** represents a sequential number unique to each part within the service assembly.

For example, a wheel assembly might be identified by reference number 6, the tire by **6:1**, the valve by **6:2**, and the wheel by **6:3**. When you order the assembly identified by reference number 6, you receive all parts identified by reference numbers 6:1, 6:2, and 6:3. However, you may also order any part individually. Reference numbers of this type appear in illustrations and in part lists.

#### Reference Numbers Indicating Quantity

In an illustration, if a reference number indicates more than one part, the reference number has the form **nX y**. The **n** represents the quantity of the part, the **X** is the multiplication symbol, and the **y** represents the reference number.

For example, in an illustration, the reference number **2X 37** means that two of the parts identified by reference number 37 are indicated.

## Part Description Abbreviations

Part descriptions in this catalog may include the following abbreviations.

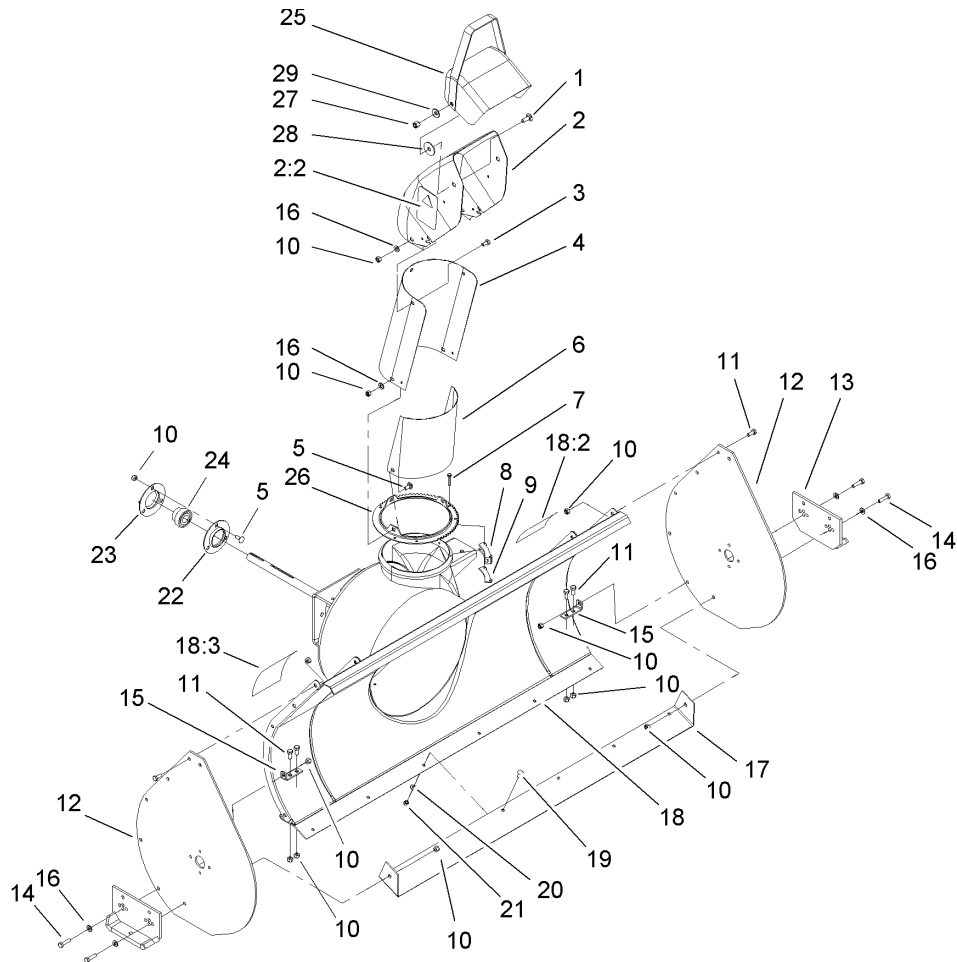
AR. ....	as required	HYD. ....	hydraulic
ASM. ....	assembly	INC. ....	incorporated
CARR. ....	carriage	LH. ....	left hand
DEG. ....	degrees	NI. ....	nylon insert
FH. ....	flat head	PPH. ....	phillips pan head
GA. ....	gauge	PTH. ....	phillips truss head
HF. ....	hex flange	PTO. ....	power take off
HH. ....	hex head	RH. ....	right hand
HHF. ....	hex head flange	SFH. ....	slotted fillister head
HHFTF. ....	hex head flange thread forming	SHH. ....	slotted hex head
HJ. ....	hex jam	SHWH. ....	slotted hex washer head
HLH. ....	hex lag head	SPH. ....	slotted pan head
HOC. ....	height-of-cut	SQH. ....	square head
HS. ....	hex	SRH. ....	slotted round head
HSBH. ....	hex socket button head	STD. ....	standard
HSFH. ....	hex socket flat head	TAP. ....	self tapping
HSH. ....	hex socket head	TTH. ....	torx truss head
HWH. ....	hex washer head	WH. ....	wing head
HWHTF. ....	hex washer head thread forming		

## Footnotes

- ❶ Not illustrated

## Contents

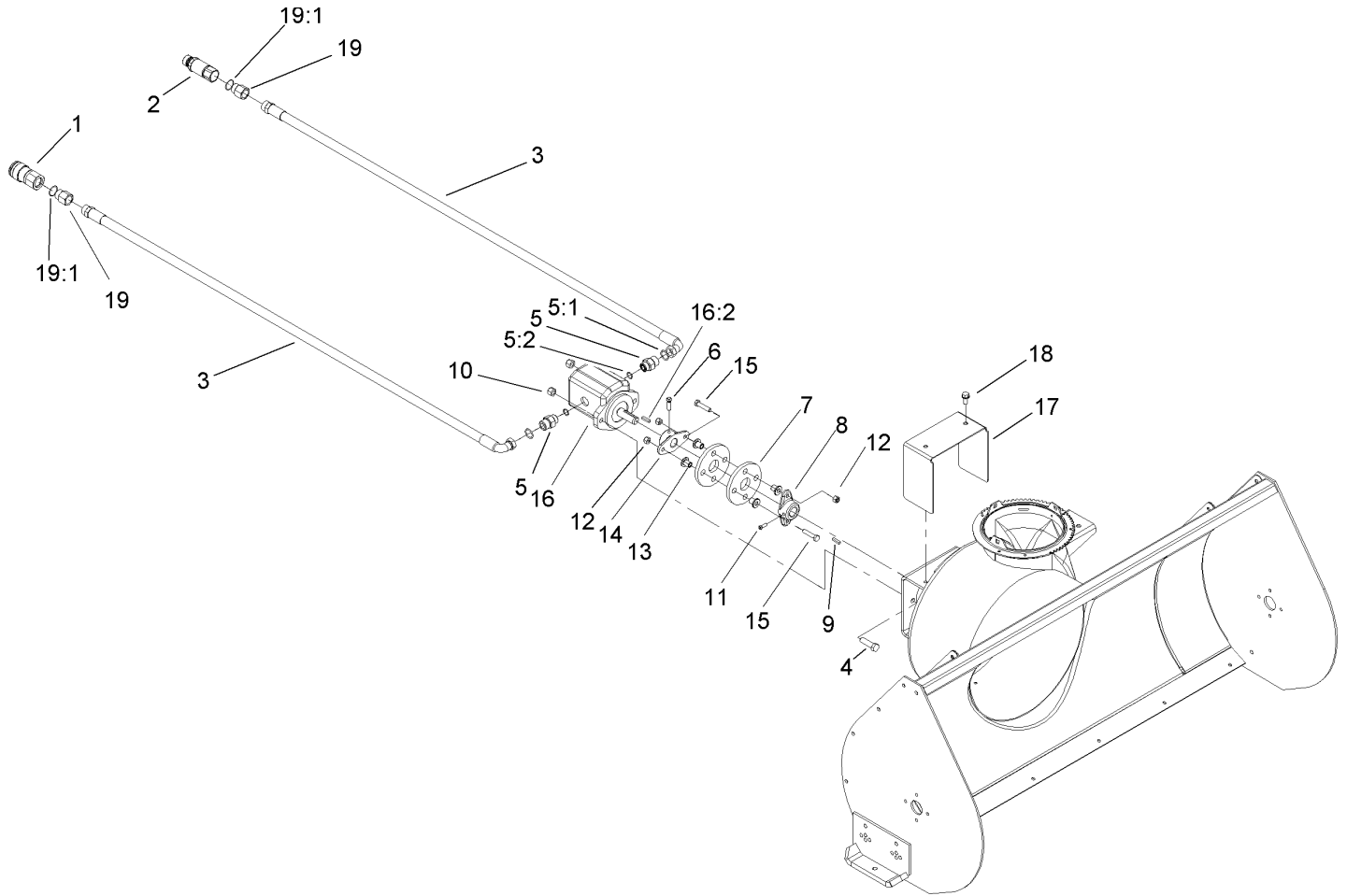
Description	Page
Discharge Chute Assembly	..... 3
Hydraulic Hose and Pump Assembly	..... 4
Auger and Gearcase Assembly	..... 5
Crank and Mounting Assembly	..... 6



## Discharge Chute Assembly

Ref	Part No.	Qty.	Description
1	3231-2	2	Screw-CARR
2	100-4623	1	Discharge Chute ASM
2:2	93-7309	2	Decal-Danger, Discharge
3	322-2	3	Screw-HH
4	26-1110-01	1	Extender-Chute, Upper
5	3230-1	6	Bolt-CARR
6	94-9787-01	1	Shield-Deflector
7	100-4352	6	Screw-HWH
8	25-5450	3	Retainer-Chute
9	100-4605-03	3	Plate-Retainer, Chute
10	3296-29	27	Nut-Lock, NI
11	322-3	10	Screw-HH
12	57-3510-01	2	Plate-Side
13	100-4600-01	2	Skid ASM
14	322-47	4	Screw-HH
15	99-2304-01	2	Bracket-Support, Blade
16	3256-23	10	Washer-Flat
17	99-2303-01	1	Blade-Scraper
18	99-6897	1	Housing ASM
18:2	93-7310	2	Decal-Danger, Auger
18:3	93-7311	1	Decal-Warning
19	3229-25	6	Screw-CARR
20	3256-22	6	Washer-Flat
21	3296-42	6	Nut-Lock, NI

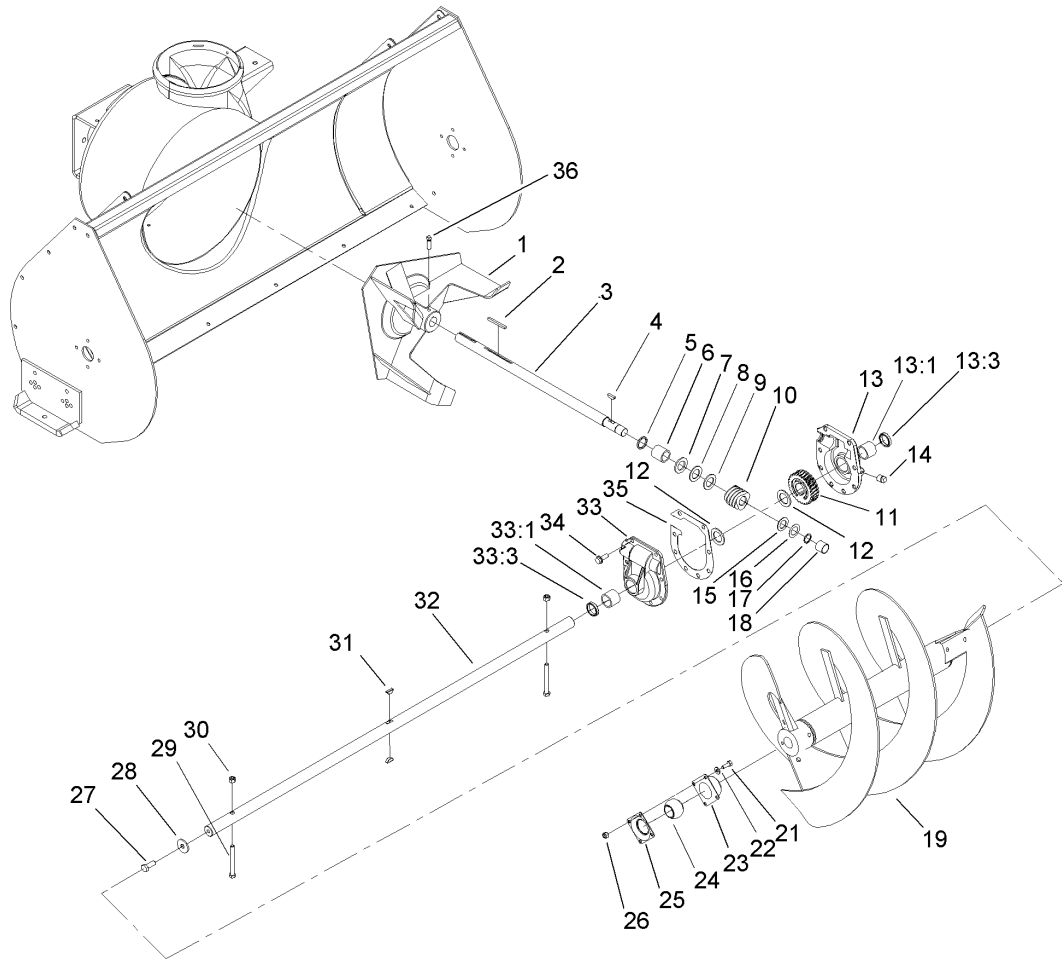
Ref	Part No.	Qty.	Description
22	110568	1	Flange
23	119020	1	Flange-Relube
24	110569	1	Bearing And Collar
25	11-7120-01	1	Deflector
26	25-5290-01	1	Ring-Swivel, Chute
27	3296-39	2	Nut-Lock, NI
28	20-4320	2	Washer-Rubber
29	3290-340	2	Washer-Belleville



## Hydraulic Hose and Pump Assembly

Ref	Part No.	Qty.	Description
1	104-6134	1	Coupler-Face, Flush
1:1	105-8396	1	Seal Kit
2	100-4701	1	Nipple-Connect, Pressure
2:1	100-6120	1	Seal Kit
3	99-6108	2	Hose-Hydraulic
4	324-6	2	Screw-HH
5	340-6	2	Fitting-Hyd, Straight
5:1	237-30	1	O-Ring
5:2	237-80	1	O-Ring
6	3241-5	4	Screw-Set
7	44-2230	2	Coupling-Rubber
8	49-6710	1	Hub-Coupler
9	6366	1	Key
10	3296-48	2	Nut-Lock, NI
11	3242-6	2	Screw-Set, SQH
12	3296-29	4	Nut-Lock, NI
13	71-4411	4	Spacer
14	49-9600	1	Hub-Pump
15	322-7	4	Screw-HH
16	99-4423	1	Motor-Hydraulic
16:1	100-4629	1	Seal Kit
16:2	104-5839	1	Key-Square
17	100-4626-01	1	Shield-Motor
18	32144-70	2	Screw-HH

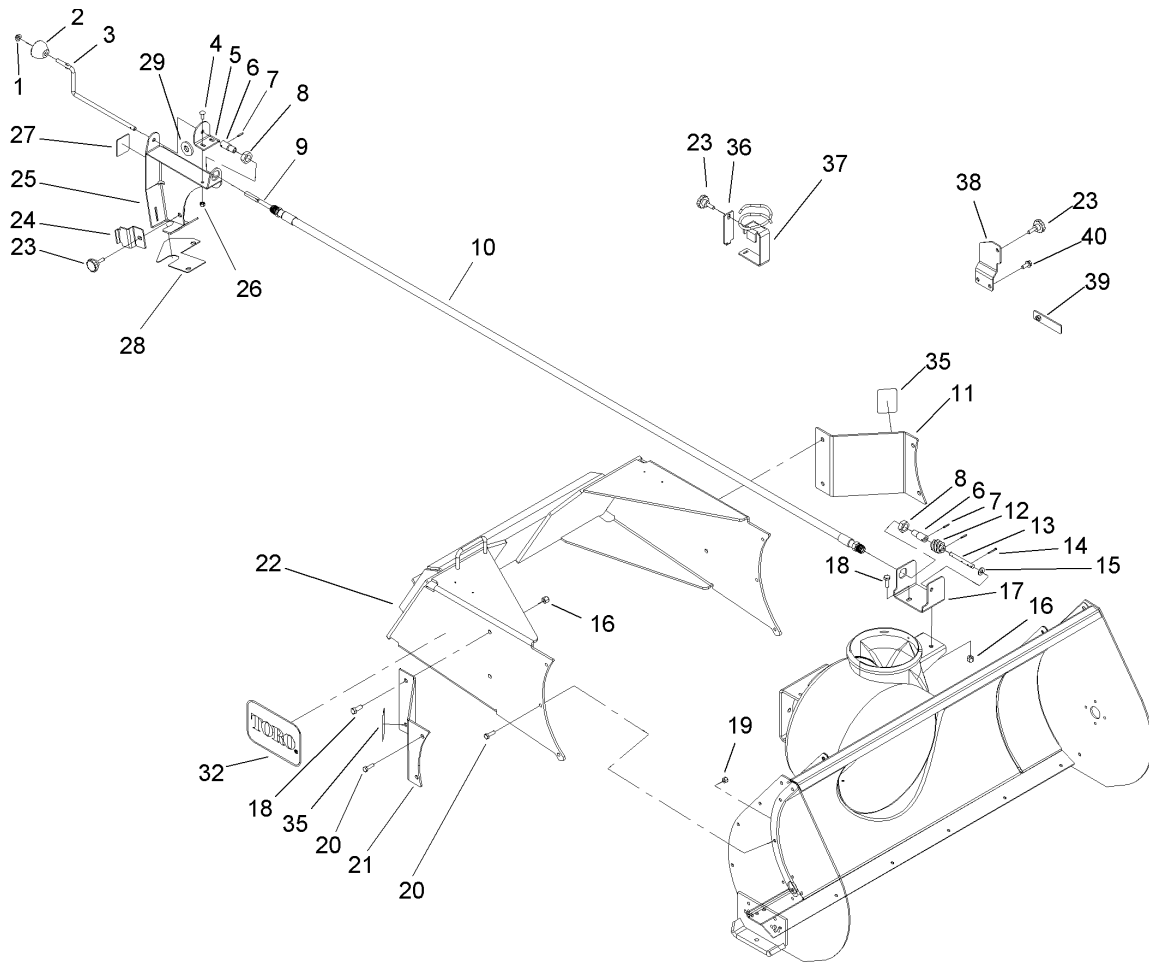
Ref	Part No.	Qty.	Description
19	100-4617	2	Adapter-Hydraulic
19:1	237-80	1	O-Ring



## Auger and Gearcase Assembly

Ref	Part No.	Qty.	Description
1	19-8890-01	1	Impeller
2	6-8590	1	Key
3	19-8540	1	Shaft-Impeller
4	3257-23	1	Key-Woodruff
5	237-87	1	Ring-Quad
6	20-3210	1	Bushing-Special
7	252-78	1	Bearing-Thrust
8	252-76	1	Bearing-Thrust
9	252-77	1	Thrust-Washer
10	5-7170	1	Gear
11	5-7180	1	Gear-Worm 27t
12	252-71	2	Washer-Thrust
13	37-8860	1	LH Gear Case ASM
13:1	256-237	1	Bushing
13:3	7-0045	1	Seal-Oil
14	281-1	1	Plug-Pipe, SQH
15	3-8664	1	Washer-Thrust
16	5210	1	Washer-Shim
17	32120-72	1	Ring-Snap
18	256-32	1	Bushing
19	57-3300-01	1	Auger, RH
20	57-3370-01	1	Auger, LH
21	321-4	8	Screw-HH
22	3256-22	8	Washer-Flat

Ref	Part No.	Qty.	Description
23	20-0990	2	Bearing-Flange, Front
24	20-0980	2	Bearing
25	20-1000	2	Bearing-Flange, Rear
26	3296-42	8	Nut-Lock, NI
27	3235-22	2	Screw-HH Lock
28	2844	2	Washer
29	322-14	2	Screw-HH
30	3296-29	2	Nut-Lock, NI
31	3257-33	2	Key-Woodruff
32	57-3500	1	Shaft-Auger
33	37-8850	1	RH Gear Case ASM
33:1	256-237	1	Bushing
33:3	7-0045	1	Seal-Oil
34	32144-41	8	Screw-Taprite
35	105-1404	1	Gasket-Gear Box
36	3242-6	2	Screw-Set, SQH



## Crank and Mounting Assembly

Ref	Part No.	Qty.	Description
1	3290-320	1	Retainer-Push On
2	61-4890	1	Knob-Chute
3	99-5906	1	Rod-Control, Chute
4	3229-1	2	Screw-CARR
5	99-5904-01	1	Bracket-Rod, Support
6	61-4940	2	Coupler
7	32121-50	3	Pin-Spring
8	353-955	2	Locknut
9	99-4978	1	Shaft-Flexible
10	99-4979	1	Hose ASM
11	100-4603-01	1	Plate-Extension, LH
12	8-8600	1	Gear-Worm, Chute
13	61-4950	1	Shaft-Gear, Worm
14	3272-10	1	Pin-Cotter
15	3256-24	1	Washer-Flat
16	3296-39	6	Nut-Lock, NI
17	99-5319-01	1	Bracket-Gear, Worm
18	323-6	6	Screw-HH
19	3296-29	6	Nut-Lock, NI
20	322-5	10	Screw-HH
21	100-4604-01	1	Plate-Extension, RH
22	99-4424-01	1	Snowthrower Mount ASM
23	99-6137	3	Knob-Control, Chute
24	99-5907-01	1	Bracket-Clamp

Ref	Part No.	Qty.	Description
25	99-5909-01	1	Bracket-Control, Chute
26	3296-42	2	Nut-Lock, NI
27	63-3510	1	Decal-Chute Direction
28	99-6139	1	Foam-Chute, Control
29	83-1040	1	Washer-Flat
32	62-7400	2	Decal
35	100-4627	2	Reflector-Snowthrower
36	100-4612-03	1	Bracket-Retainer, Clamp
37	100-4611-03	1	Hose Retainer ASM
38	100-4620-01	1	Bracket,clamp
39	100-4621-01	1	Retainer Plate ASM
40	32144-70	2	Screw-HH

## NOTES

