



Rear Roller Kit

ProCore® 648 or 648s Aerator

Model No. 09234

Installation Instructions

Installation

Loose Parts

Use the chart below to verify that all parts have been shipped.

Description	Qty.	Use
No parts required	—	Prepare the machine.
Side plate	2	Install the side plate.
Hex-head bolt (3/8 inch)	4	
Nylock nut (3/8 inch)	4	
Roller assembly	1	Install the roller assembly to the roller arms.
Spring washer	2	
Roller arm	2	
Hardened washer	1	
Roller shaft screw	2	
Grease fitting (if not previously assembled)	2	
Roller scraper	1	
Scraper arms	2	
Carriage screw (3/8 inch)	4	
Nylock nut (3/8 inch)	4	Install the roller assembly to the side plate.
Flange bushing	2	
Flat washer	2	
Hex-head bolt (5/8 inch)	2	
Nylock nut (5/8 inch)	2	Install the spring assembly to the spring plate.
Spring assembly	2	
Spring bracket	4	
Nylock nut (3/8 inch)	8	
Carriage bolt (3/8 inch)	8	



Preparing the Machine

1. Park the machine on a level surface.
2. Raise the coring head.
3. Shut off the engine.
4. Engage the parking brake.
5. Remove the key and wait for all moving parts to stop.

Installing the Side Plate

1. Secure the coring head service latch.
2. From the left side of the machine, remove and retain the 2 hex-head bolts (3/8 inch), 2 washers, and 2 flange nuts (3/8 inch) securing the side shield to the corning head. Remove the side shield from the corning head. Repeat on the right side of the machine.

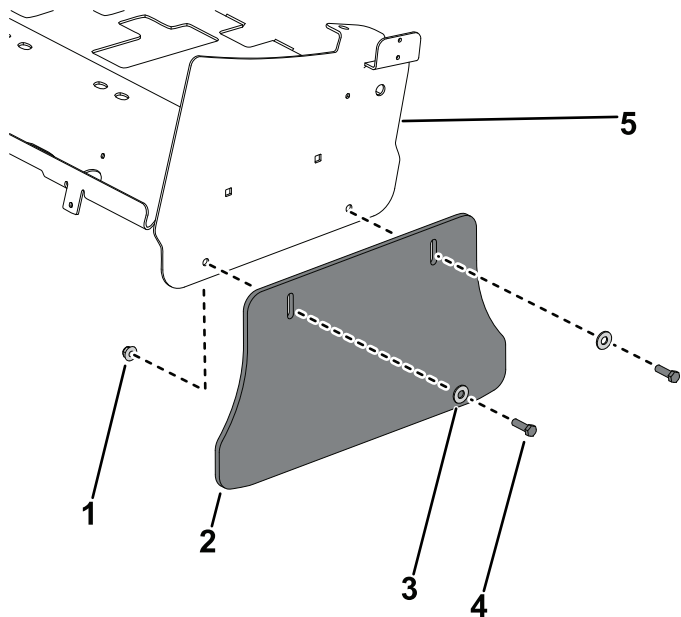


Figure 1

1. Flange nut (3/8 inch)
2. Side shield
3. Washer
4. Hex-head bolt (3/8 inch)
5. Corning head

3. From the left side of the machine, install the side plate to the corning head; secure it with 2 hex-head bolts (3/8 inch) and 2 nylock nuts (3/8 inch). Repeat on the right side of the machine.

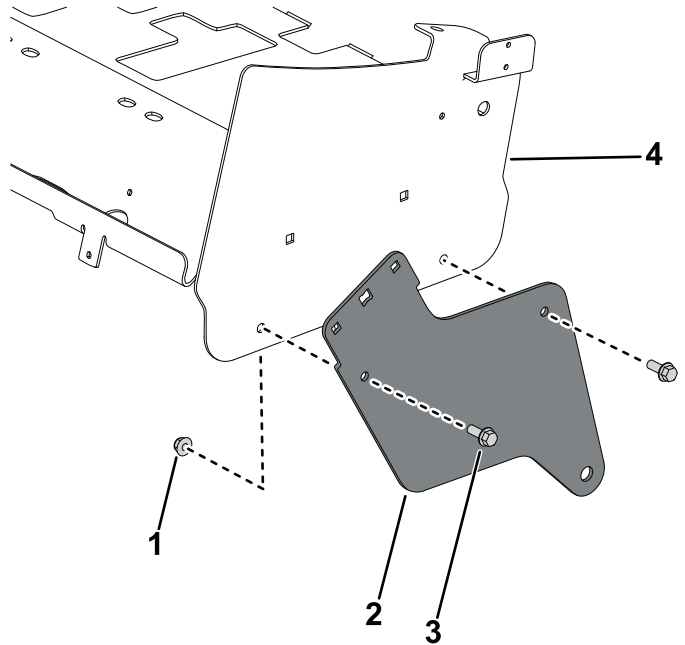


Figure 2

1. Nylock nut (3/8 inch)
2. Side plate
3. Hex-head bolt (3/8 inch)
4. Corning head

g430327

g430339

Installing the Roller Assembly to the Roller Arms

1. Insert the spring washer onto each end of the roller shaft (Figure 3).
2. Insert a roller arm onto each end of the roller shaft (Figure 3).
3. Secure the roller arm to the 2 roller shafts with the hardened washer (right side only) and 2 roller shaft screws. Thread the 2 grease fittings onto the 2 roller shaft screws if not previously assembled (Figure 3).
4. Insert the roller-scraper mounting tabs into the slots in each of the scraper arms (Figure 3).
5. Install the scraper arms to the roller arms (Figure 3).
6. On the left side of the roller arm, secure the scraper arm to the roller arm with 2 carriage screws (3/8 inch) and 2 nylock nuts (3/8 inch) (Figure 3). Repeat on the right roller arm.

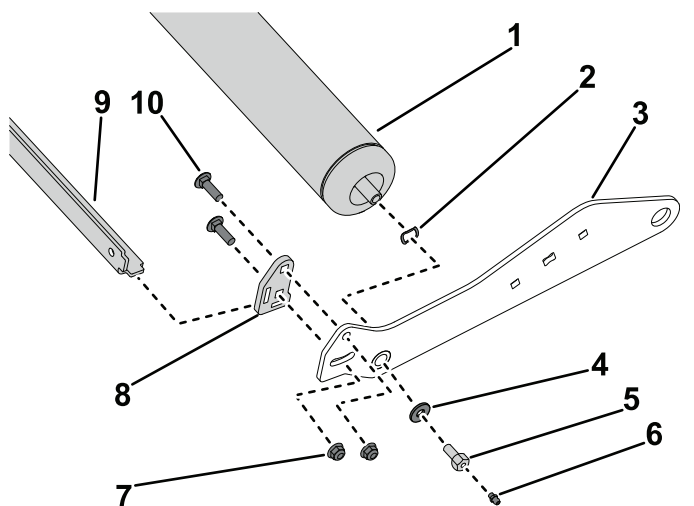


Figure 3

- | | |
|--------------------------------------|------------------------------|
| 1. Roller assembly | 6. Grease fitting |
| 2. Spring washer | 7. Nylock nut (3/8 inch) |
| 3. Roller arm | 8. Scraper arm |
| 4. Hardened washer (right side only) | 9. Carriage screw (3/8 inch) |
| 5. Roller shaft screw | |

Installing the Roller Assembly to the Side Plate

1. Align the 2 roller-arm mounting holes with the 2 side plate mounting holes.
2. Secure the roller assembly to the side plate with the 2 flange bushings, 2 flat washers, 2 hex-head bolts (5/8 inch), and 2 nylock nuts (5/8 inch).

Note: The roller contacts the turf a few inches behind the tines and turf hold downs.

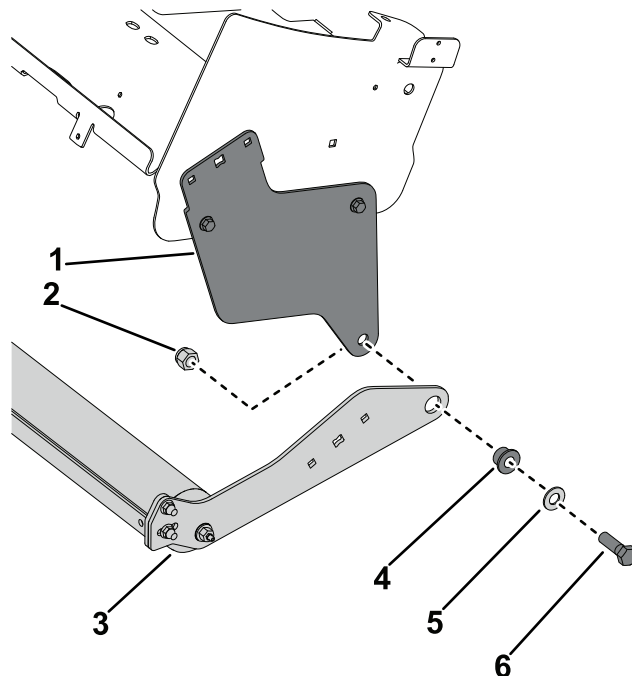


Figure 4

- | | |
|---------------------|-----------------------------|
| 1. Side plate | 4. Flange bushing |
| 2. Nylock nut (5/8) | 5. Flat washer |
| 3. Roller assembly | 6. Hex-head bolt (5/8 inch) |

Installing the Spring Assembly to the Spring Plate

1. From the left side of the machine, secure the spring assembly to the side plate and the roller arm with the 2 spring brackets, 2 carriage bolts (3/8 inch), and 2 nylock nuts (3/8 inch). Repeat on the right side of the machine.

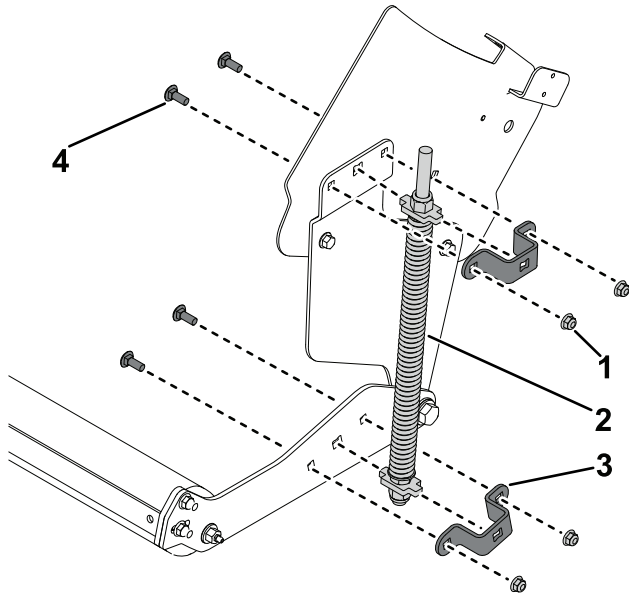
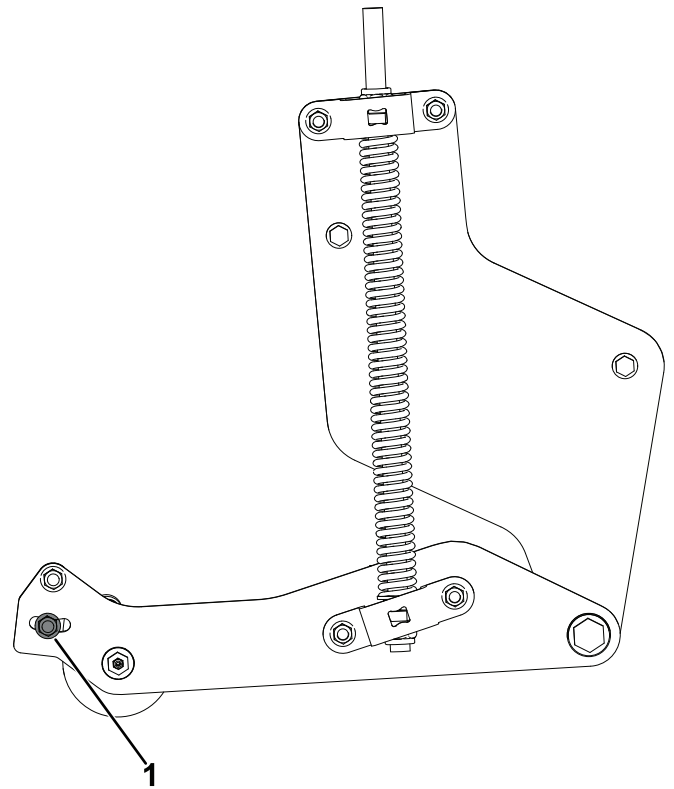


Figure 5

g430380

- | | |
|--------------------------|-----------------------------|
| 1. Nylock nut (3/8 inch) | 3. Spring bracket |
| 2. Spring assembly | 4. Carriage bolt (3/8 inch) |

2. Grease each roller fitting with a number 2 lithium-based grease, approximately 15 ml (1/2 fl oz) per end.
3. Loosen the 2 lower nylock nuts (3/8 inch) securing the scraper arms to the roller arms. Adjust the roller scraper until there is approximately 0.15 cm (0.060 inch) clearance between the roller and the scraper. Tighten the nylock nut.



g430381

Figure 6

1. Scraper adjustment nylock nut

4. Tighten all the fasteners.

Note: The spring is pre-adjusted at the factory, but to ensure proper down-pressure on the roller, verify that the compressed spring length is 38.1 cm (15 inches). Adjust as required.

Shortening the spring adjustment does not increase the operating down pressure. It will raise the transport height and delay the contact with the ground when engaging the coring head.