



Suspension Seat Kit

100 Series and 200 Series Z Master[®]

Part No. 99–8522

Parts Catalog

Ordering Replacement Parts

To order replacement parts, please supply: the part number, the quantity, and the description of each part desired.

Understanding Reference Numbers

Each identified part in an illustration has a reference number. The reference number for a part also appears in the parts list, along with other information about the part.

This catalog uses two special reference number formats, one to indicate parts in a service assembly and another to indicate the quantity of a given part in an illustration.

Service Assembly Reference Numbers

Parts in service assemblies have reference numbers in the form **a:b**. The **a** represents the reference number of the entire service assembly and the **b** represents a sequential number unique to each part within the service assembly.

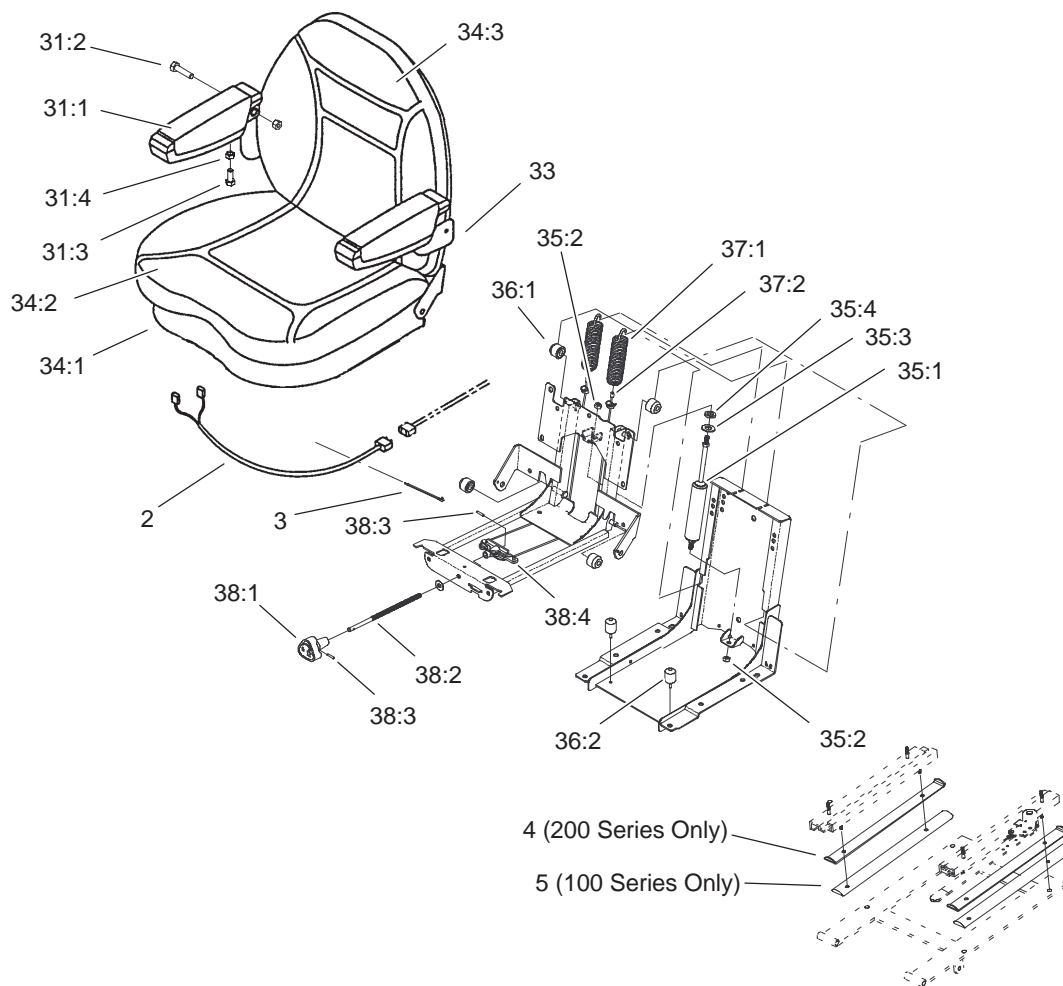
For example, a wheel assembly might be identified by reference number **6**, the tire by **6:1**, the valve by **6:2**, and the wheel by **6:3**. When you order the assembly identified by reference number **6**, you receive all parts identified by reference numbers **6:1**, **6:2**, and **6:3**. However, you may also order any part individually.

Reference numbers of this type appear in illustrations and in part lists.

Reference Numbers Indicating Quantity

In an illustration, if a reference number indicates more than one part, the reference number has the form **nX y**. The **n** represents the quantity of the part, the **X** is the multiplication symbol, and the **y** represents the reference number.

For example, in an illustration, the reference number **2X 37** means that two of the parts identified by reference number **37** are indicated.



Sheet No.: 0
C-3042

Suspension Seat Assembly

Ref. No.	Part No.	Qty.	Description
2	103-1227	1	Harness-Wiring, Seat
3	1-303335	5	Tie-Plastic
4	1-633872-03	2	Stop-Seat
5	1-653282-03	2	Stop/Spacer-Seat
*30	1-643281	1	Switch-Seat
31	1-631842	1	Armrest Pad Kit
☆31:1		1	Pad-Arm
☆31:2		1	Capscrew
☆31:3		1	Capscrew
☆31:4		1	Flange-Locknut
*☆31:5		2	Spacer
*32	1-631843	1	Boot Kit
*☆32:1		1	Boot
*☆32:2		1	Wire-Form, Upper
*☆32:3		2	Wire-Form, Lower
*☆32:4		2	Tie Wrap
33	1-631844	1	Armrest Kit
*☆33:1		2	Capscrew
☆33:2		1	Armrest ASM
*☆33:3		2	Washer
34	1-631845	1	Pan ASM
☆34:1		1	Pan
☆34:2		1	Seat-Gray
☆34:3		1	Back-Gray
*☆34:4		1	Adhesive-Thermoset
*☆34:5		6	Nut-Panel

Ref. No.	Part No.	Qty.	Description
*★34:6	1-631846	10	Staple
35		1	Damper Kit
★35:1		1	Damper
★35:2		2	Locknut-Hex
★35:3		1	Washer
★35:4	1-631847	1	Spacer
36		1	Roller Kit
★36:1		4	Roller
★36:2		2	Bumper
*★36:4		2	Spacer
37	1-631848	1	Spring And Cable Kit
★37:1		2	Spring
★37:2	1-631849	1	Cable ASM
38		1	Knob And Shaft Kit
★38:1		1	Knob-Tension, Adjust
★38:2		1	Shaft-Tension Adjust
★38:3		2	Pin-Spring
★38:4		1	Spring-Hanger

* Not illustrated

☆ Not serviced separately