



Work Light Kit

Workman® 3000 Series

Part No. 93-3903

Form No. 3316-907 Rev A

Installation Instructions

Installation

Note: The vehicle must be equipped with a Wire Harness Kit, Part No. 93-3900, before the Work Light Kit can be installed.

1. Raise the bed and install the safety support on the fully extended lift cylinder rod (if so equipped).
2. Stop the engine, set the parking brake, and remove the key from the ignition switch.
3. Remove the positive (+) battery cable from the battery.
4. Remove the front hood from the vehicle if it is not already removed; refer to the wire harness *Installation Instructions*.
5. Plug the spade terminal of the red wire from the light kit harness into the new fuse block. Affix the fuse decal to the corresponding circuit on the vehicle fuse block decal (Fig. 1).
6. Insert a 15 amp fuse into the fuse block at the location shown on the decal (Fig. 1).

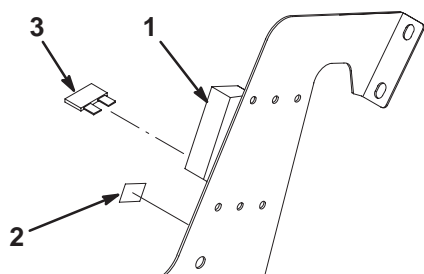


Figure 1

1. Fuse block
2. Fuse decal
3. 15 amp fuse

7. Affix the work light switch decal around 2 of the mounting holes in the switch bracket (Fig. 2).
8. Mount each work light switch in the hole of the switch bracket with a washer and 2 hex nuts (Fig. 2). Position the washer between the top nut and switch bracket.
9. Remove the protective coverings from the terminals of the brown/white and red wires from the wiring harness. Secure the terminals to the front work light switch with 2 screws and washers (Fig. 2).
10. Remove the protective coverings from the terminals of the blue and red wires from the wiring harness. Secure the terminals to the rear work light switch with 2 screws and washers (Fig. 2).

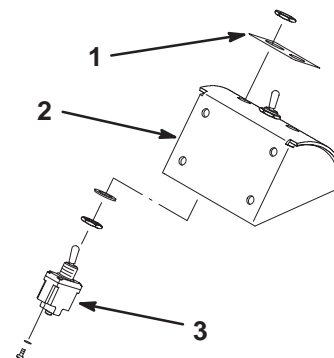


Figure 2

1. Decal
2. Switch bracket
3. Switch

11. Using the locations shown in Figure 3, loosely mount each work light to the work light bracket with a stop tab, 2 Belleville washers, and a nut. Point the outside light forward (Fig. 3).

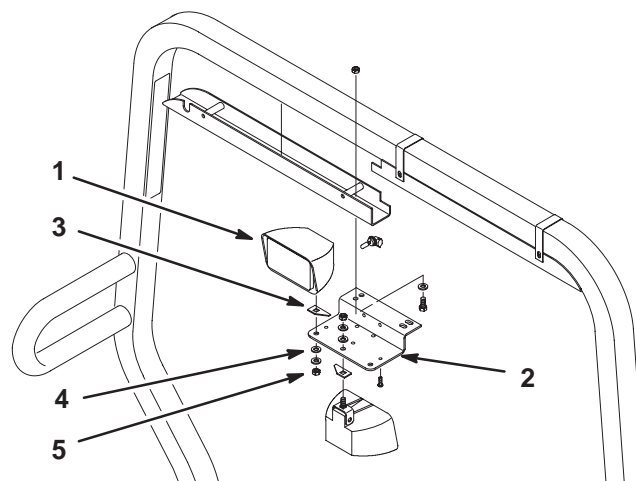


Figure 3

1. Work light
2. Work light bracket
3. Stop tab
4. Belleville washers (2)
5. Nut

Note: If you are mounting a Signal Light Kit, Part No. 93-3901, do so per the instructions supplied with the kit before installing the light channels.

12. Mount the work light bracket to the end holes of the light channels with 2 capscrews (5/16 x 3/4 in.), flat washers, and locknuts (Fig. 3).
13. Plug the ROPS harness connectors into the appropriate light connectors. The brown/white wire is for the front lights; the blue wire is for the rear light.
14. Mount the light channels to the ROPS as instructed in the wire harness *Installation Instructions*.

15. Connect the positive (+) battery cable to the battery.

Operation

To operate the work lights, move the toggle switches to the On position.

Schematic

