



Idler Kit

Groundsmaster® 5900 or 5910 Rotary Mower

Model No. 145-8399

Installation Instructions

Note: Determine the left and right sides of the machine from the normal operating position.

Installation

Loose Parts

Use the chart below to verify that all parts have been shipped.

Procedure	Description	Qty.	Use
1	No parts required	–	Prepare the machine.
2	Template		Drill holes for the idler assembly.
3	Idler pulley Idler arm Idler support Spring Flange locknut (3/8 inch) Bolt (1/2 x 1-3/4 inches) Locknut (1/2 inch) Spacer Grease fitting Bushing Hex flange bolt (3/8 x 1-1/4 inches)	1 1 1 1 1 1 1 1 1 2 2	Install the idler pulley.

1

Preparing the Machine

No Parts Required

Procedure

1. Park the machine on a level surface.
2. Engage the parking brake.
3. Lower the cutting unit.
4. Shut off the engine and remove the key.

2

Drilling Holes for the Idler Assembly

Parts needed for this procedure:

	Template
--	----------

Procedure

1. Open the hood.
2. Remove the tension on the belt and move the belt away from the installation area.
3. Remove the roll pin, bolt, and the existing idler pulley shown in [Figure 1](#).



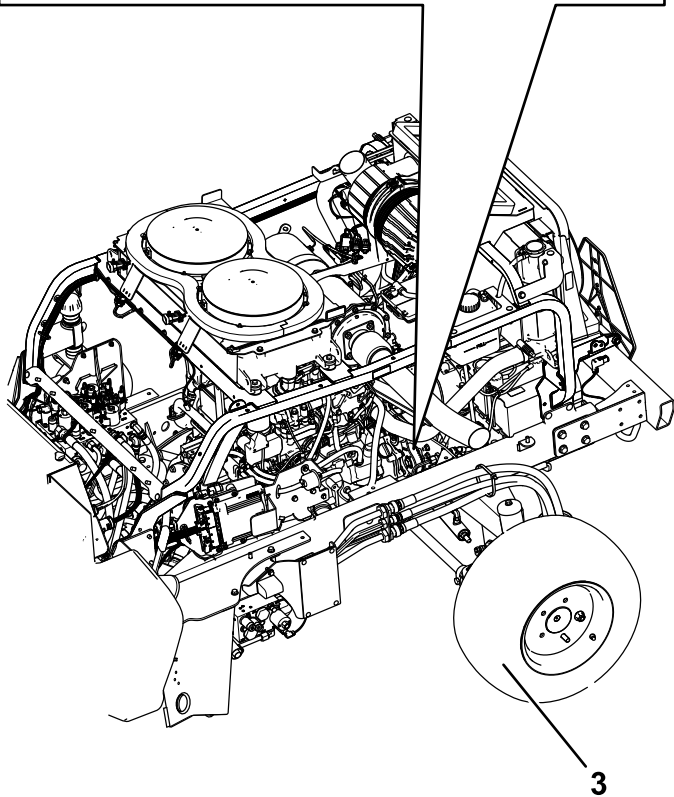
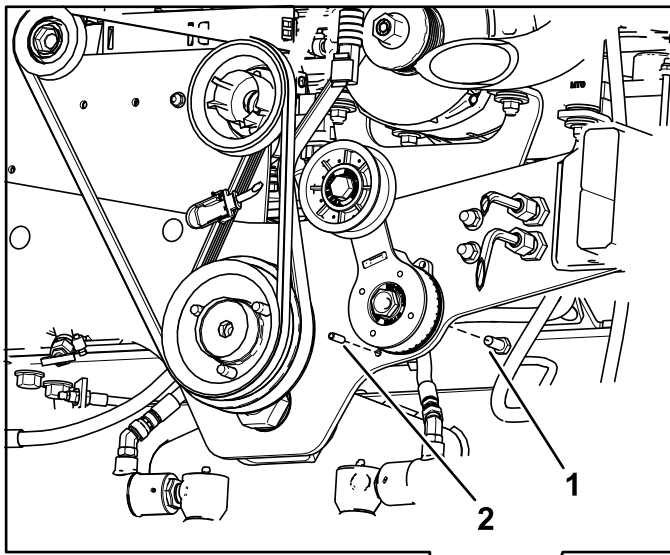
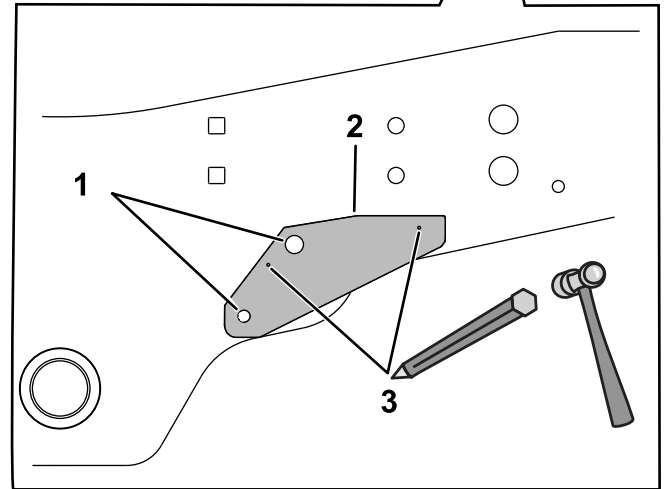
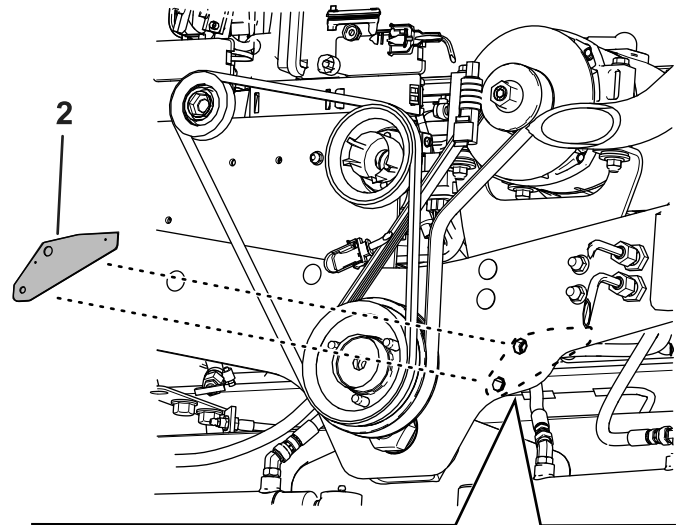


Figure 1

- 1. Bolt
- 2. Roll pin
- 3. Left rear tire

- 4. Align the template to the frame using the holes labeled 1 in Figure [Figure 2](#).
- 5. Punch the location of the holes labeled 3 in [Figure 2](#).



g345928

Figure 2

- 1. Align holes to frame
- 2. Template
- 3. Punch the holes here.

- 6. Remove the template.
- 7. Drill 2 holes (13/32 inch) at the punched locations ([Figure 3](#)).

⚠ WARNING

Using a drill without proper eye protection may allow debris to enter the eye, causing injury.

When drilling, always wear eye protection.

3

Installing the Idler Pulley

Parts needed for this procedure:

1	Idler pulley
1	Idler arm
1	Idler support
1	Spring
1	Flange locknut (3/8 inch)
1	Bolt (1/2 x 1-3/4 inches)
1	Locknut (1/2 inch)
1	Spacer
1	Grease fitting
2	Bushing
2	Hex flange bolt (3/8 x 1-1/4 inches)

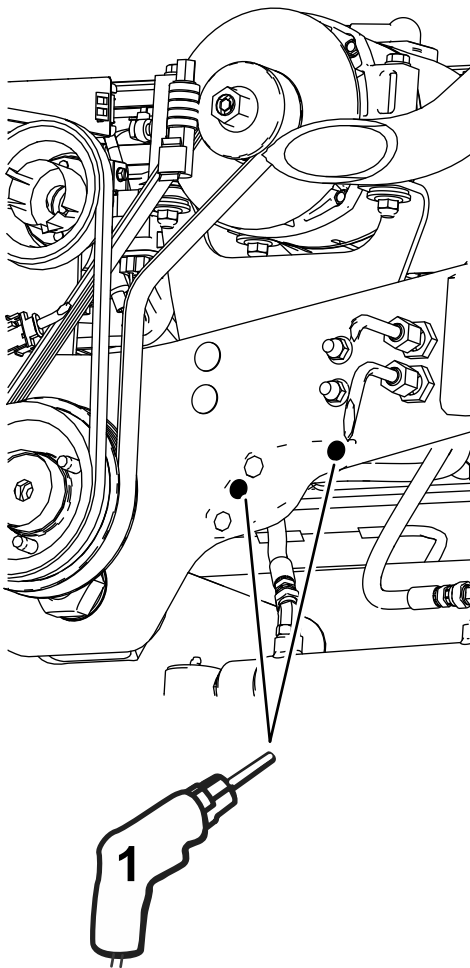


Figure 3

1. Drill holes (13/32 inch)

g345927

Procedure

1. Install the idler pulley to the idler arm with a bolt (1/2 x 1-3/4 inches), spacer, and 1 locknut (1/2 inch); refer to [Figure 4](#).

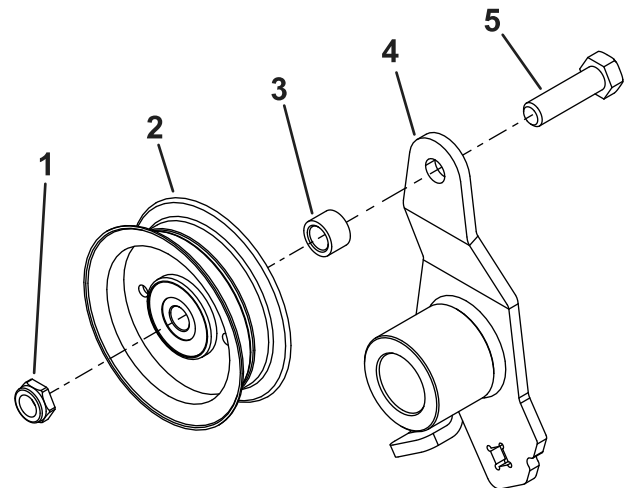


Figure 4

1. Locknut (1/2 inch)
2. Idler pulley
3. Spacer
4. Idler arm
5. Bolt (1/2 x 1-3/4 inches)

g345929

2. Install the grease fitting into the idler support as shown in [Figure 5](#).

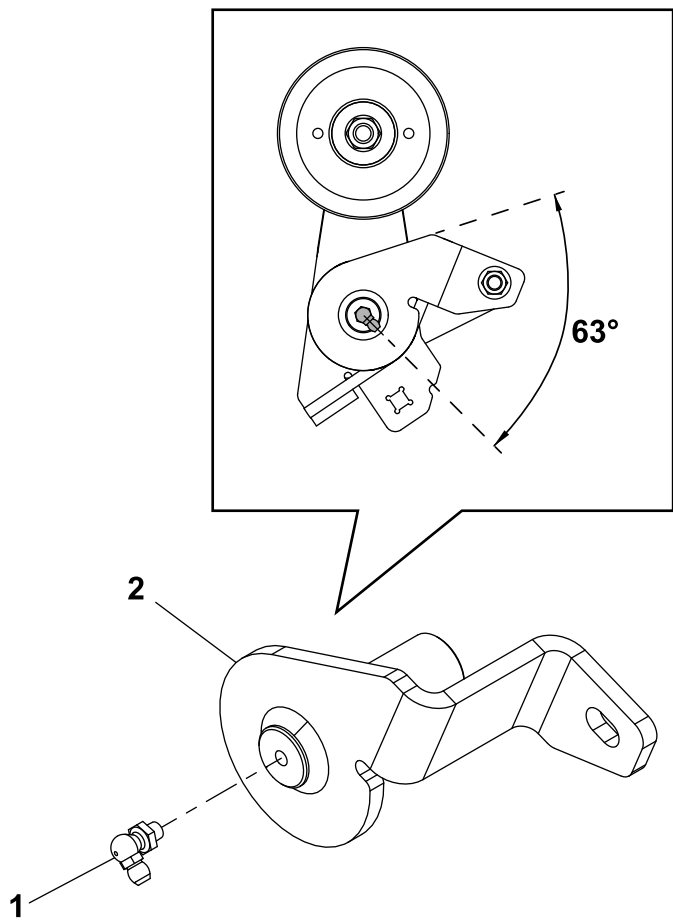


Figure 5

g345858

1. Grease fitting
2. Idler support

3. Install the idler support and idler arm to the frame of the machine with 2 bolts (3/8 x 1-1/4 inches), 2 bushings, a spring, and a nylon locknut (3/8 inch); refer to [Figure 6](#).
4. Install the install the spring ends as shown in [Figure 7](#).

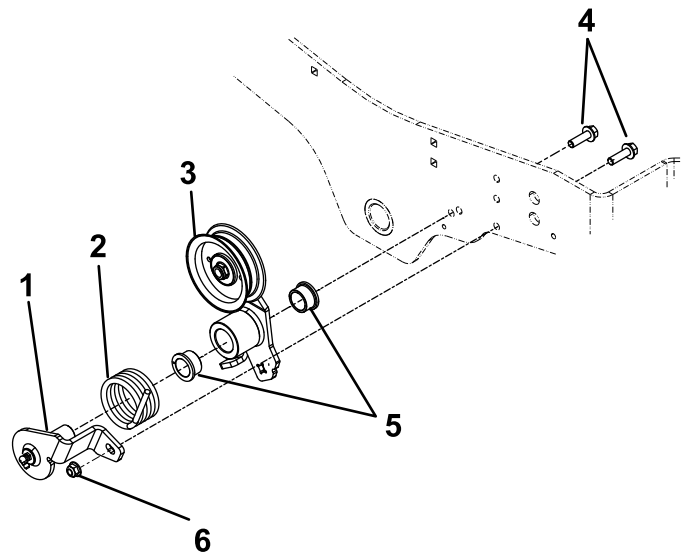


Figure 6

g345860

1. Idler support
 2. Spring
 3. Idler arm
 4. Bolt (3/8 x 1-1/4 inches)
 5. Bushing
 6. Nut (3/8 inch)
5. Using a ratchet (3/8 inch) in the square in the idler arm, rotate the idler arm and install the belt around the idler pulley ([Figure 7](#)).

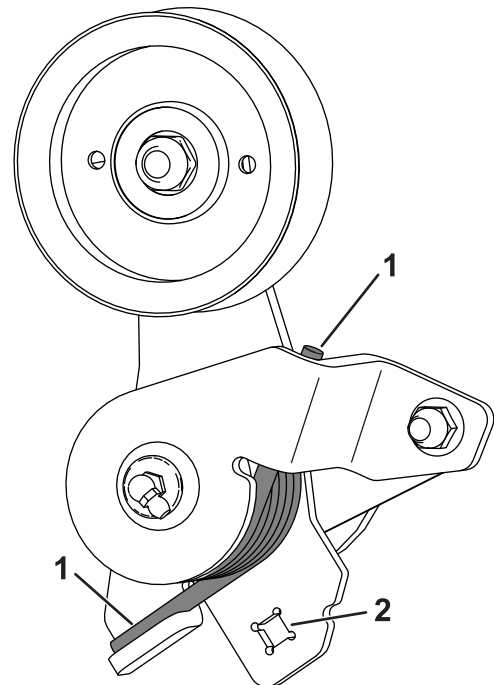


Figure 7

g345930

1. Spring end
2. Square in idler arm

6. Close the hood and secure it with the 2 hood latches.