



## 48in Recycler<sup>®</sup> Retrofit Kit

### Wheel Horse<sup>®</sup> 260 Series Yard Tractors and 300 Series/5xi Garden Tractors

Model No. 79190

## Parts Catalog

---

### Ordering Replacement Parts

To order replacement parts, please supply: the part number, the quantity, and the description of each part desired.

### Understanding Reference Numbers

Each identified part in an illustration has a reference number. The reference number for a part also appears in the parts list, along with other information about the part.

This catalog uses two special reference number formats, one to indicate parts in a service assembly and another to indicate the quantity of a given part in an illustration.

### Service Assembly Reference Numbers

Parts in service assemblies have reference numbers in the form **a:b**. The **a** represents the reference number of the entire service assembly and the **b** represents a sequential number unique to each part within the service assembly.

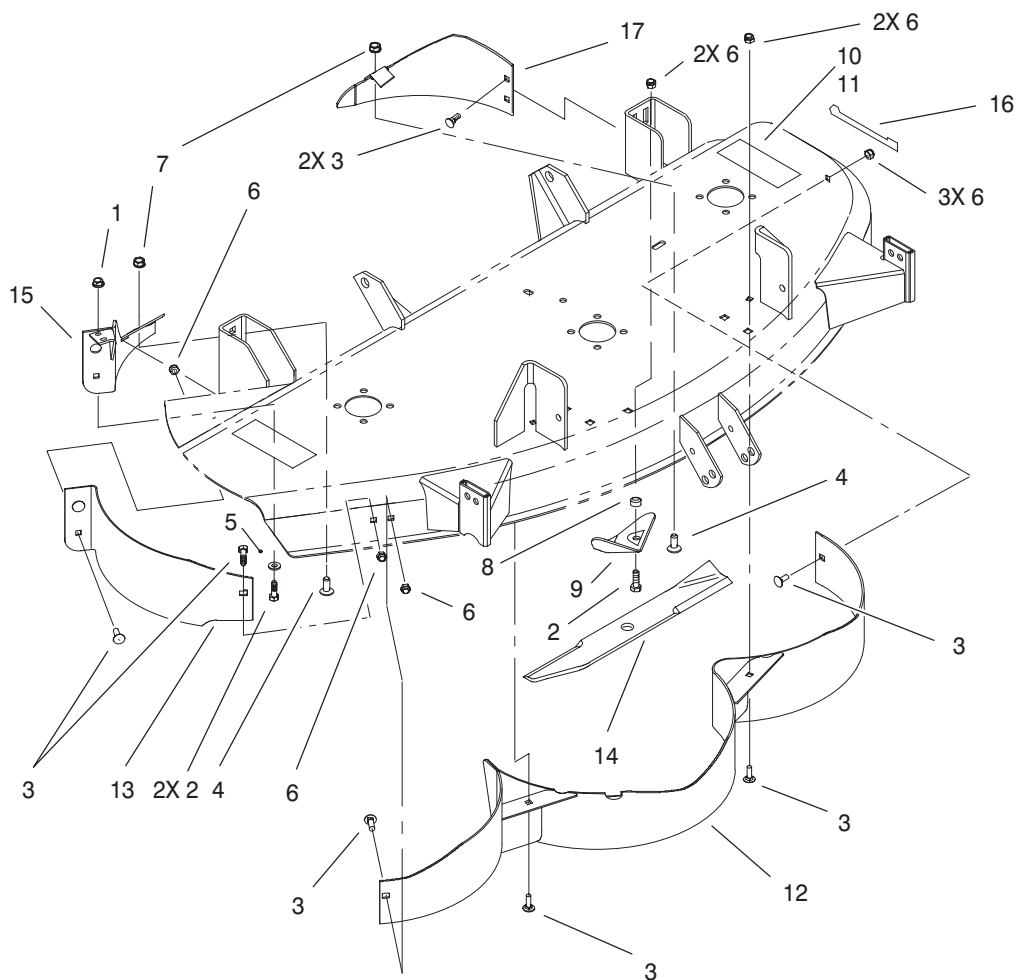
For example, a wheel assembly might be identified by reference number **6**, the tire by **6:1**, the valve by **6:2**, and the wheel by **6:3**. When you order the assembly identified by reference number **6**, you receive all parts identified by reference numbers **6:1**, **6:2**, and **6:3**. However, you may also order any part individually.

Reference numbers of this type appear in illustrations and in part lists.

### Reference Numbers Indicating Quantity

In an illustration, if a reference number indicates more than one part, the reference number has the form **nX y**. The **n** represents the quantity of the part, the **X** is the multiplication symbol, and the **y** represents the reference number.

For example, in an illustration, the reference number **2X 37** means that two of the parts identified by reference number **37** are indicated.



Sheet No.:0

## Baffle & Kicker Assembly

Ref. No.	Part No.	Qty.	Description
1	32128-20	2	Nut-HF
2	322-5	4	Screw-HH
3	3230-23	8	Screw-CARR
4	3231-22	2	Screw-CARR
5	3256-23	2	Washer-Flat
6	3296-29	10	Nut-Lock, NI
7	3296-39	2	Nut-Lock, NI
8	59-4310	2	Spacer
9	84-5760	2	Plate-Kicker
10	92-7108	1	Decal-Danger
11	93-7317	1	Decal-Danger
12	94-9708-03	1	Baffle-Discharge
13	94-9710-03	1	Baffle-Front
14	94-9719	3	Blade
15	94-9759-03	1	RH Rear Baffle ASM
16	94-9761	1	Decal-Recycler
17	94-9765-03	1	LH Rear Baffle ASM

Ref. No.	Part No.	Qty.	Description