



Z150

Z–Master[®] with 52in SFS Side Discharge Mower

Model No. 74178—230000001 and Up

Parts Catalog

Ordering Replacement Parts

To order replacement parts, please supply: the part number, the quantity, and the description of each part desired.

Understanding Reference Numbers

Each identified part in an illustration has a reference number. The reference number for a part also appears in the parts list, along with other information about the part.

This catalog uses two special reference number formats, one to indicate parts in a service assembly and another to indicate the quantity of a given part in an illustration.

Service Assembly Reference Numbers

Parts in service assemblies have reference numbers in the form **a:b**. The **a** represents the reference number of the entire service assembly and the **b** represents a sequential number unique to each part within the service assembly.

For example, a wheel assembly might be identified by reference number **6**, the tire by **6:1**, the valve by **6:2**, and the wheel by **6:3**. When you order the assembly identified by reference number **6**, you receive all parts identified by reference numbers **6:1**, **6:2**, and **6:3**. However, you may also order any part individually.

Reference numbers of this type appear in illustrations and in part lists.

Reference Numbers Indicating Quantity

In an illustration, if a reference number indicates more than one part, the reference number has the form **nX y**. The **n** represents the quantity of the part, the **X** is the multiplication symbol, and the **y** represents the reference number.

For example, in an illustration, the reference number **2X 37** means that two of the parts identified by reference number **37** are indicated.

Contents

Description	Page	Description	Page
Front Frame Assembly	4	Group 2 – Crankcase Assembly (Continued)	
Caster Wheel Assembly No. 1–634662	5	Kohler CV20S–PS65585	24
Front Spring Assembly No. 103–1987	6	Group 3 – Oil Pan/Lubrication Assembly	
Height of Cut Assembly	7	Kohler CV20S–PS65585	25
Main Frame Assembly	8	Group 4 – Head/Valve/Breather Assembly	
Seat Assembly No. 1–633705	9	Kohler CV20S–PS65585	26
Fuel System Assembly	10	Group 5 – Ignition/Charging Assembly	
Parking Brake System Assembly	11	Kohler CV20S–PS65585	28
Motion Control System Assembly	12	Group 6 – Blower Housing Assembly	
Hydraulic System Assembly	13	Kohler CV20S–PS65585	29
Pump, Idler and Belt Assembly	15	Group 7 – Starter Assembly	
Engine and Clutch Assembly	16	Kohler CV20S–PS65585	30
Deck Assembly	17	Group 8 – Fuel System Assembly	
Deck Spindle Assembly	18	Kohler CV20S–PS65585	31
Idler, Pulley/Lift Strut, Chain Assembly	19	Group 9 – Engine Control Assembly	
Electrical System Assembly	20	Kohler CV20S–PS65585	32
Electrical Schematic	21	Group 10 – Air Intake/Filtration Assembly	
Group 1 – Crankshaft Assembly		Kohler CV20S–PS65585	33
Kohler CV20S–PS65585	22	Group 11 – Exhaust Assembly	
Group 2 – Crankcase Assembly		Kohler CV20S–PS65585	34
Kohler CV20S–PS65585	23		

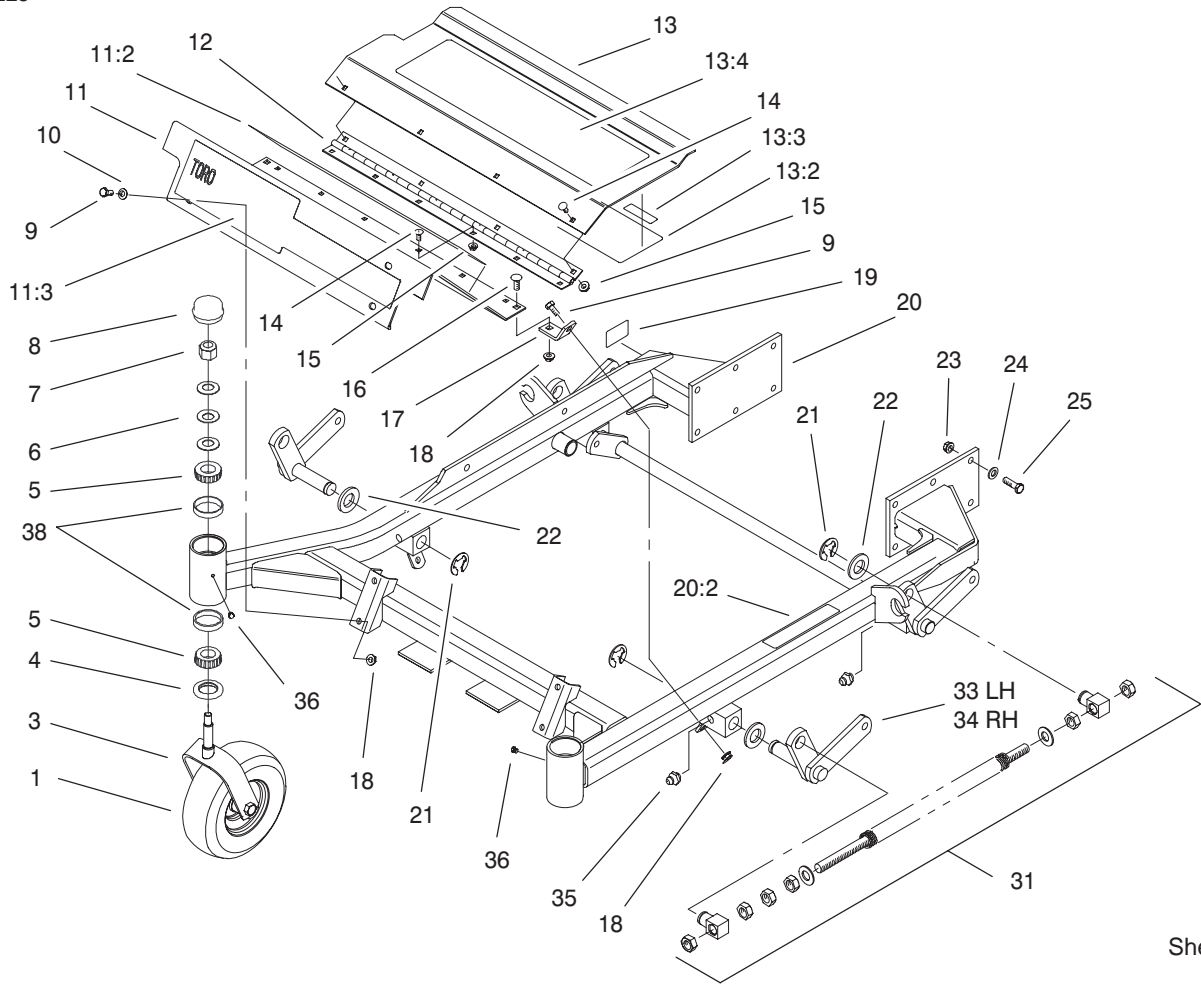
Accessories

Description	Model / Part No.	Description	Model / Part No.
Recycler Kit	59225	Steel Bagger	30107
Bahaia Mulch Kit	59227	Striping Kit	30121
High Sail Blades		High Suspension Seat	99–8522
(3 required for improved bagging)	56–2390	Z–Stand Kit	105–1621
Atomic Blades		Hitch Kit	99–8924
(3 required for improved mulching)	104–1301		

Part Description Abbreviations

Part descriptions in this catalog may include the following abbreviations.

Abbreviation	Meaning	Abbreviation	Meaning
AR	as required	HYD	hydraulic
ASM	assembly	INC	incorporated
CARR	carriage	LH	left hand
DEG	degrees	NI	nylon insert
FH	flat head	PPH	Phillips pan head
GA	gauge	PTH	Phillips truss head
HF	hex flange	PTO	power take off
HH	hex head	RH	right hand
HHF	hex head flange	SFH	slotted fillister head
HLH	hex lag head	SHH	slotted hex head
HJ	hex jam	SQH	square head
HOC	height-of-cut	SHWH	slotted hex washer head
HS	hex socket	SPH	slotted pan head
HSBH	hex socket button head	SRH	slotted round head
HSFH	hex socket flat head	STD	standard
HSH	hex socket head	TAP	self tapping
HWH	hex washer head	TTH	Torx truss head
HWHTF	hex washer head thread forming	WH	wing head

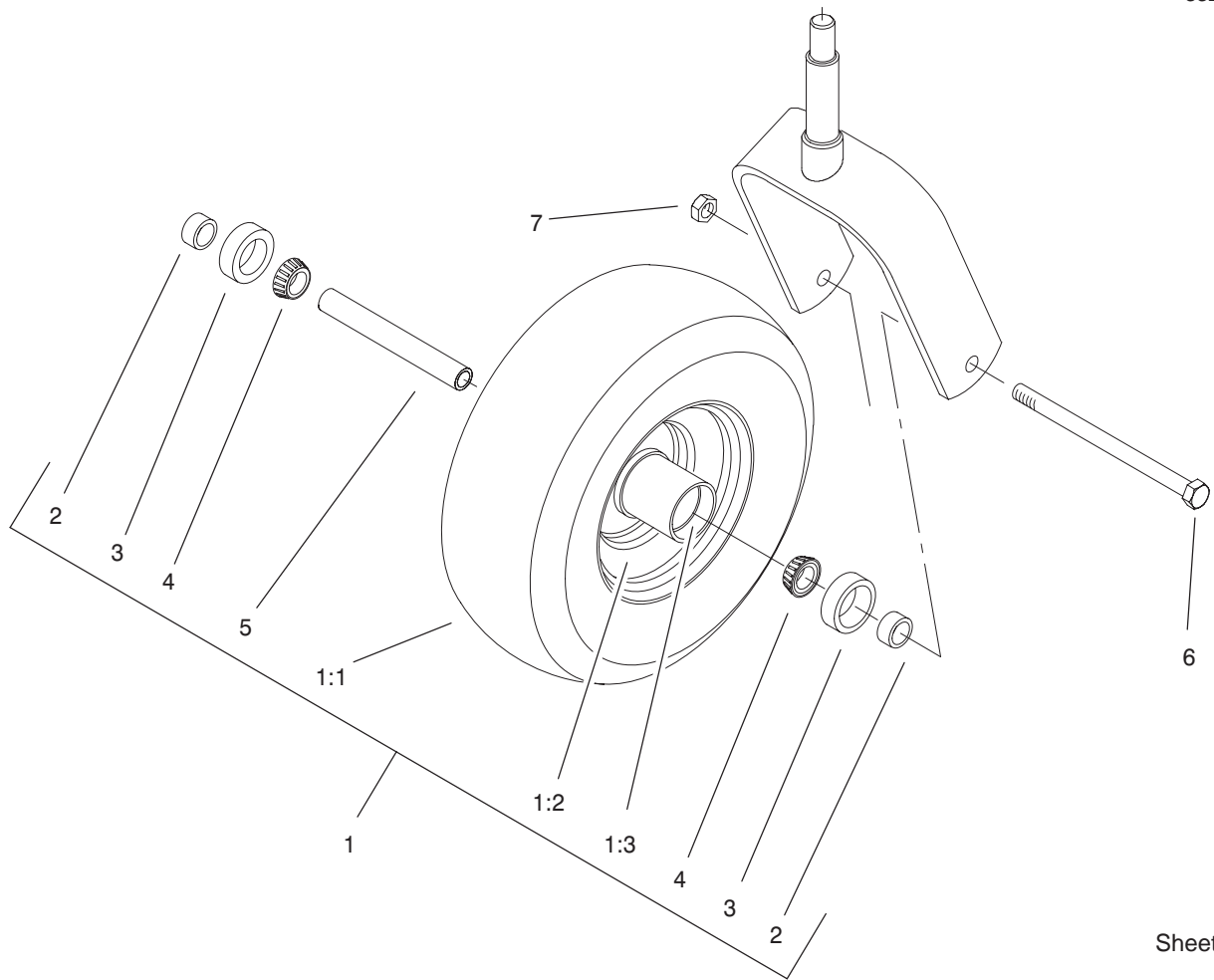


Sheet No.:2

Front Frame Assembly

Ref. No.	Part No.	Qty.	Description
1	1-634662	2	Caster Wheel ASM
3	1-632511-01	2	Caster
4	1-543511	2	Seal-Grease
5	254-94	4	Bearing-Cone, Taper
6	1-633508	6	Washer-Bellville
7	3296-51	2	Nut-Lock, NI
8	1-543513	2	Cap-Grease
9	322-3	6	Screw-HH
10	3256-23	4	Washer-Flat
11	99-3940	1	Floorpan-Front
11:2	1-633553	1	Pad-Antiskid
11:3	1-633737	1	Decal-Z Master
12	1-653049	1	Hinge-Floorpan
13	99-3930	1	Footrest ASM
13:2	99-3924	1	Decal-Service
13:3	98-5954	1	Decal-Missing, Cover
13:4	1-633553	1	Pad-Antiskid
14	3229-10	10	Screw-CARR
15	32128-33	10	Nut-HF
16	3230-1	2	Screw-CARR
17	99-3870-01	2	Bracket-Floorpan
18	32128-20	8	Nut-HF
19	105-2625	1	Decal-Safety STD
20	99-3931	1	Front Frame ASM
20:2	1-633818	1	Decal-Warning
21	32151-103	6	Ring-Snap

Ref. No.	Part No.	Qty.	Description
22	3256-29	6	Washer-Flat
23	3290-357	12	Nut-HHF
24	98-5975	12	Washer-Belleville
25	323-7	12	Screw-HH
31	103-1987	2	Front Spring ASM
33	99-3871-01	1	LH Lift Arm ASM
34	99-3872-01	1	RH Lift Arm ASM
35	302-19	4	Fitting-Grease
36	1-811010	2	Plug
38	254-72	4	Bearing-Cup, Tapered

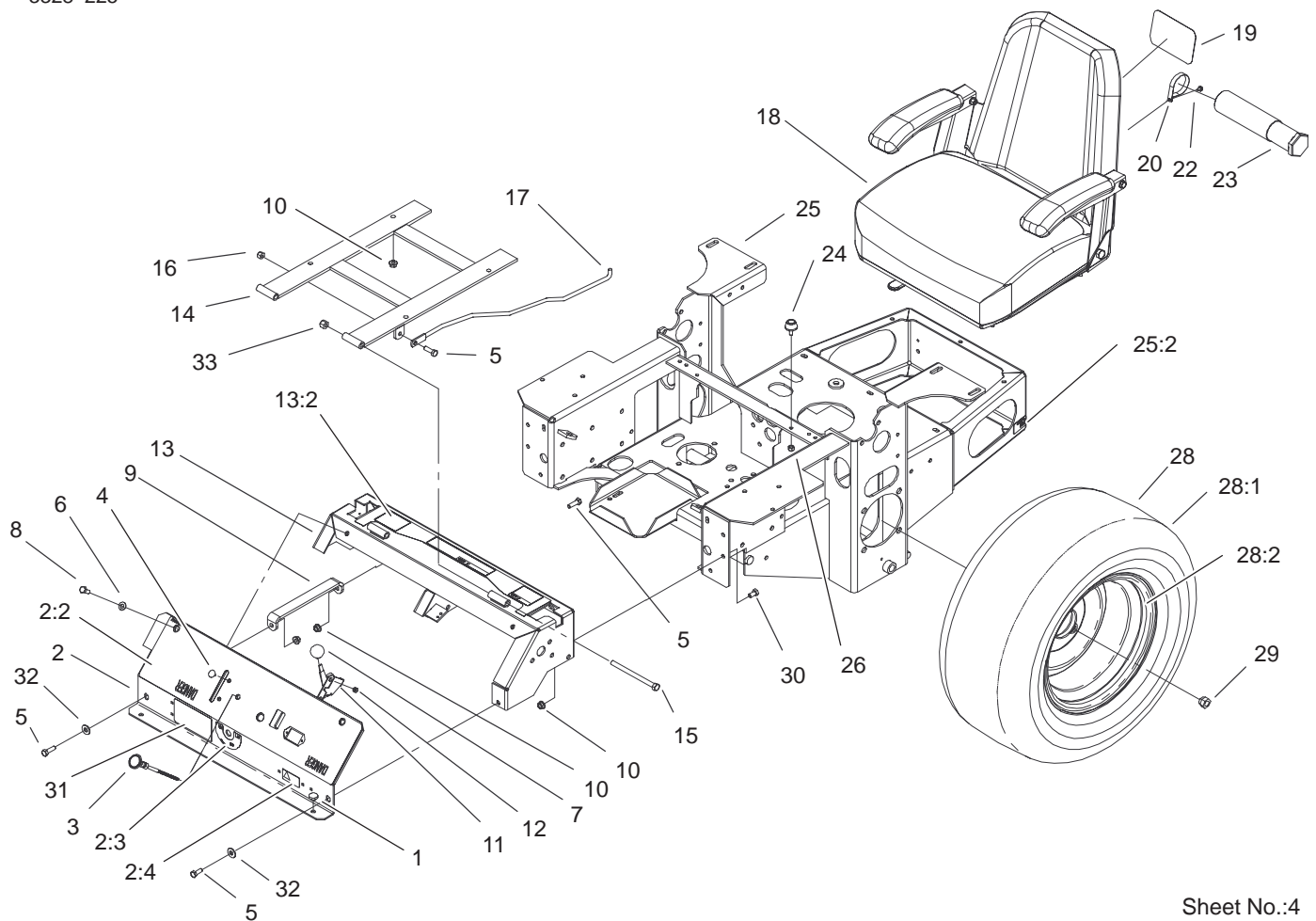


Sheet No.:A1
C-3038

Caster Wheel Assembly No. 1-634662

Ref. No.	Part No.	Qty.	Description
1	1-633582	1	Wheel & Tire ASM
1:1	1-633002	1	Tire
1:2	1-633583	1	Wheel
1:3	1-633584	2	Bearing-Cup
2	1-633581	2	Spacer-Bearing
3	1-633580	2	Seal-Bearing
4	1-633585	2	Bearing-Cone, Taper
5	1-633579	1	Spacer-Caster, Front
6	325-36	1	Screw-HH
7	3296-45	1	Nut-Lock, NI

Ref. No.	Part No.	Qty.	Description

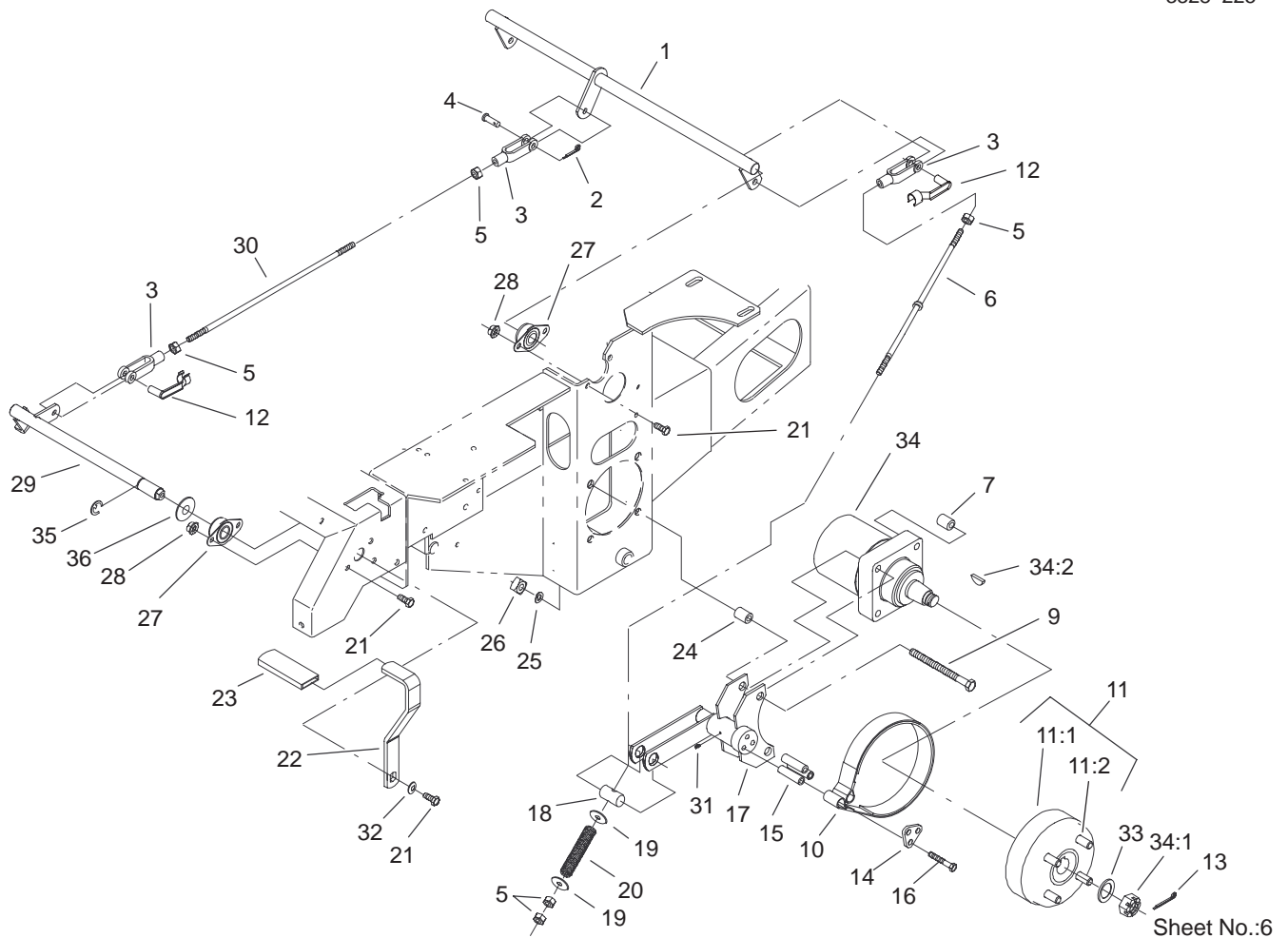


Sheet No.:4

Main Frame Assembly

Ref. No.	Part No.	Qty.	Description
1	1-513658	2	Bumper-Catcher, Grass
2	99-3932	1	Control Panel ASM
2:2	99-3942	1	Decal-Panel, Control
2:3	103-0262	1	Decal-Valve, Fuel
2:4	98-4387	1	Decal-Protection, Ear
3	1-603336	1	Control-Choke
4	1-807513	2	Bolt-CARR
5	322-5	3	Screw-HH
6	3256-23	2	Washer-Flat
7	1-513592	1	Knob-Ball
8	322-3	3	Screw-HH
9	1-653089-03	1	Bracket
10	32128-20	12	Nut-HF
11	1-633696	1	Cable-Throttle
12	3296-2	2	Nut-Lock
13	105-6123	1	Console ASM
13:2	103-1997	1	Decal-Console, Top
14	1-632187-03	1	Frame-Seat
15	323-39	2	Screw-HH
16	3296-29	1	Nut-Lock, NI
17	103-1731	1	Rod-Retainer, Seat
18	1-633705	1	Seat ASM
19	99-4693	1	Decal-Toro
20	2412-120	2	R-Clamp
22	32104-76	2	Screw

Ref. No.	Part No.	Qty.	Description
23	74-0720	1	Tube-Manual
24	1-523420	2	Bumper
25	105-3649	1	Main Frame ASM
25:2	65-2690	2	Decal-Surface, Hot
26	3296-42	2	Nut-Lock, NI
28	1-653159	2	Wheel And Tire ASM
28:1	1-653160	1	Tire
28:2	1-653161	1	Wheel
29	242-50	8	Nut-Lug
30	322-2	6	Screw-HH
31	99-4604	1	Decal-Z150
32	3256-3	2	Washer-Flat
33	3296-39	2	Nut-Lock, NI

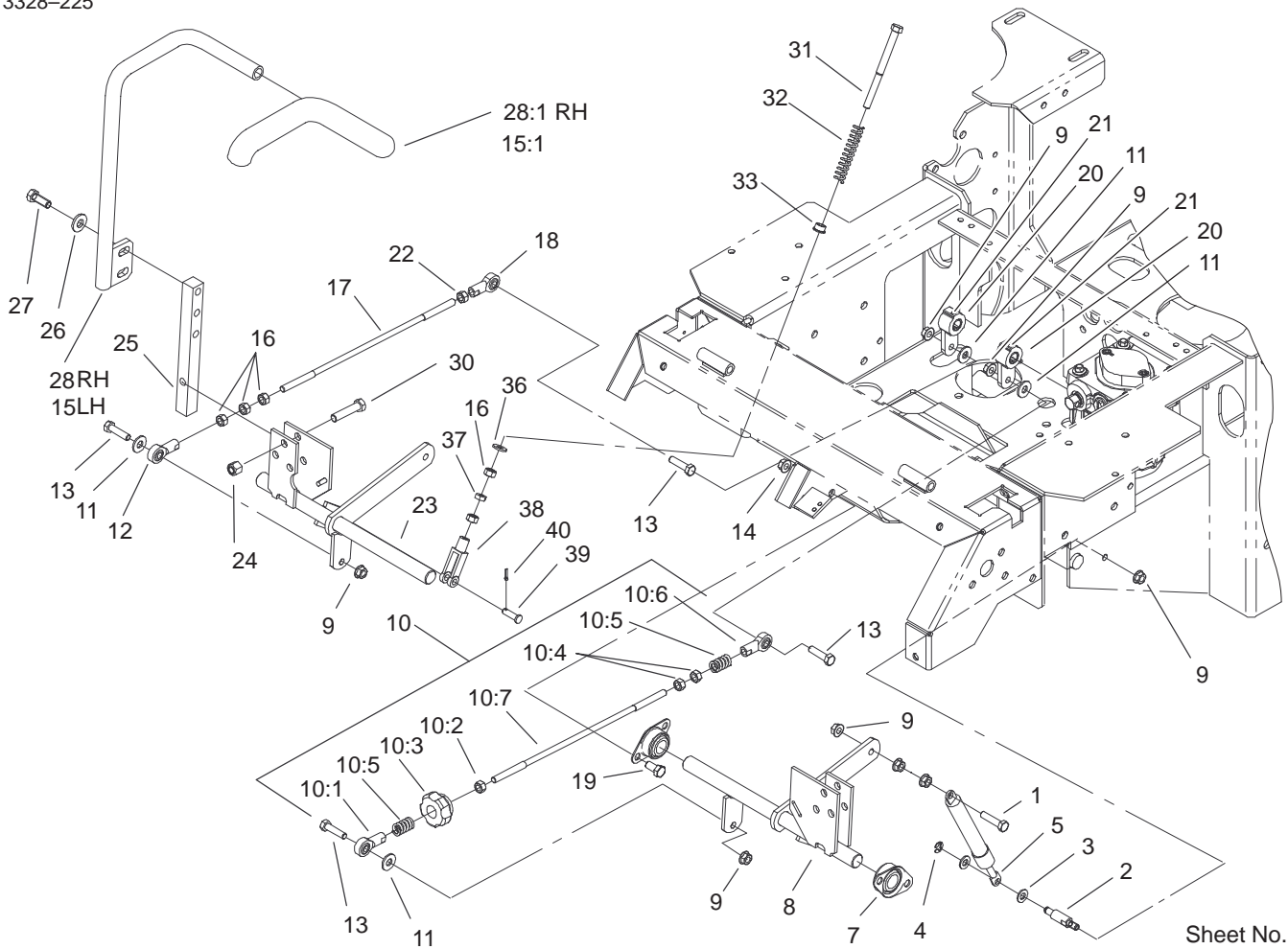


Sheet No.:6

Parking Brake System Assembly

Ref. No.	Part No.	Qty.	Description	Ref. No.	Part No.	Qty.	Description
1	1-652073-03	1	Crank-Brake, Park	26	103-0131	8	Nut-Square
2	3272-10	1	Pin-Cotter	27	1-633102	4	Bearing-Flange, Side
3	1-633131	4	Yoke-Linkage, Brake	28	3290-357	8	Nut-HHF
4	1-808285	1	Pin-Clevis	29	103-3116	1	Shaft-Brake, Parking
5	3219-3	8	Nut-HH	30	1-653061	1	Linkage-Handle, Brake
6	103-0356	2	Rod-Brake	31	1481	2	Fitting-Grease
7	1-653068	4	Spacer-Wheel	32	98-5975	1	Washer-Belleville
9	325-13	8	Screw-HH	33	1-523157	2	Washer-Spacer
10	103-0355	2	Band-Brake	34	1-523328	2	Motor-Wheel
11	103-0590	2	Hub-Wheel	34:1	1-809036	1	Nut-HH
11:1	103-0589	1	Hub-Wheel	34:2	3257-42	1	Key-Woodruff
11:2	1-633926	4	Stud-Wheel	*34:99	103-2748	1	Drive Link Kit
12	103-2399	3	Pin-Spring, Clevis	*34:99	1-000139	1	Bearing Kit
13	1-806800	2	Pin-Cotter	*34:99	1-000099	1	Seal Kit
14	103-0374	2	Retainer-Band, Brake	35	32151-48	1	E-Ring
15	103-0384	6	Spacer	36	3256-28	1	Washer-Flat
16	322-9	6	Screw-HH				
17	103-0352-03	2	Bracket-Brake				
18	1-633144	2	Pin-Trunion				
19	3256-4	4	Washer-Flat				
20	1-633454	2	Spring-Brake				
21	323-4	9	Screw-HH				
22	1-653074-03	1	Handle-Brake, Park				
23	1-633268	1	Grip-Lever, Brake				
24	1-653069	4	Spacer-Wheel				
25	3253-7	8	Washer-Lock				

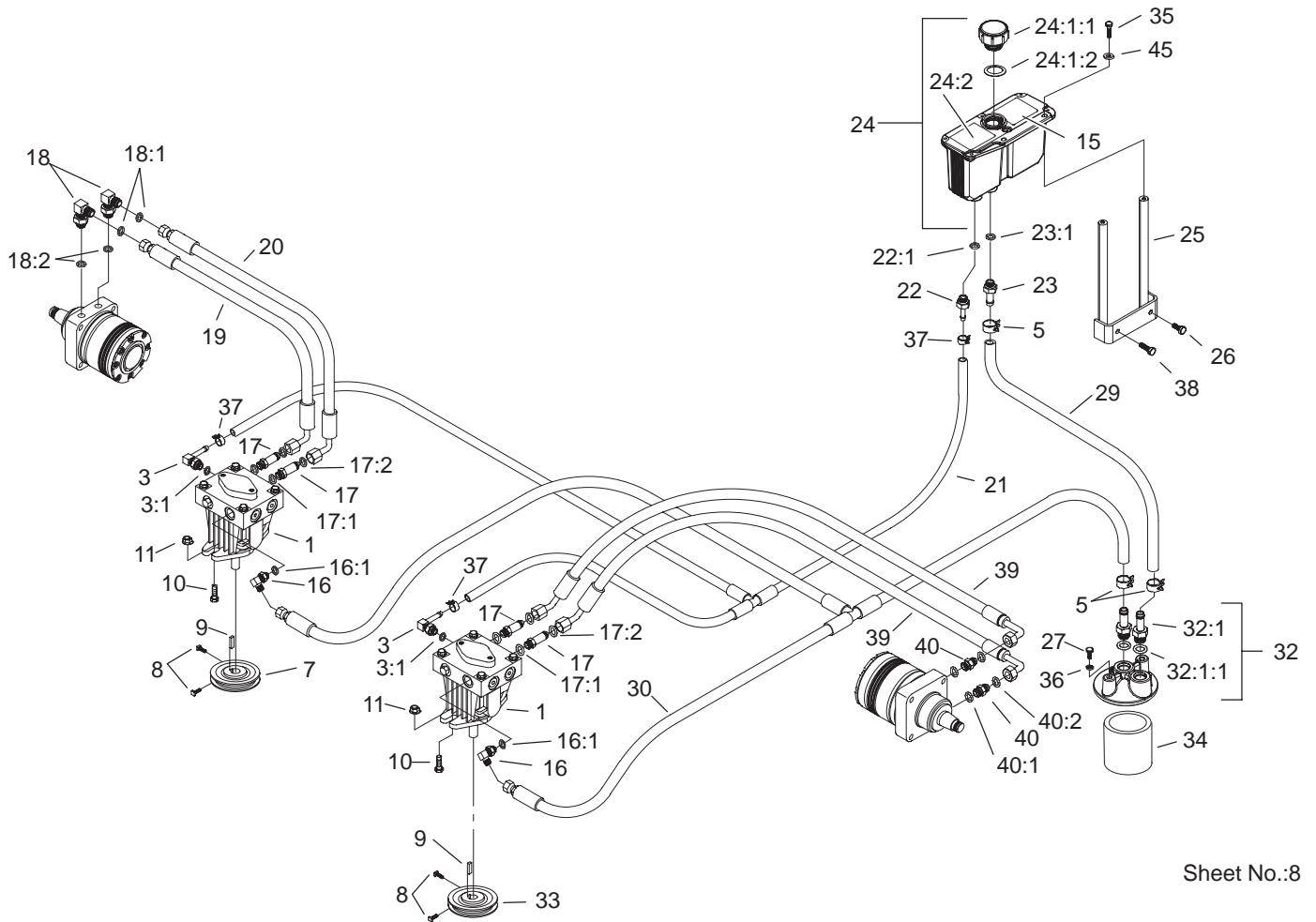
* Not illustrated



Motion Control System Assembly

Ref. No.	Part No.	Qty.	Description
1	1-403180	2	Screw-HH
2	1-653316	2	Pin-Damper
3	3256-23	4	Washer-Flat
4	32120-35	2	E-Ring
5	103-2913	2	Damper-Control, Motion
7	1-633102	4	Bearing-Flange, Side
8	103-2199	1	LH Motion Control ASM
9	32128-20	12	Nut-HF
10	103-3063	1	ASM, Tracking Rod Lhp
10:1	1-543017	1	Balljoint-RH
10:2	3219-2	1	Nut-Hex
10:3	103-3060	1	Knob-Tracking
10:4	1-804524	2	Nut
10:5	1-323245	2	Spring-Compression
10:6	1-633152	1	Balljoint-Thread, LH
10:7	103-3066	1	Link-Rod, Tracking
11	3256-3	4	Washer-Flat
12	1-543017	1	Balljoint-RH
13	322-6	4	Screw-HH
14	3290-357	8	Nut-HHF
15	103-0631	1	LH Lever ASM
15:1	1-633257	1	Grip-Control, Motion
16	3219-2	7	Nut-Hex

Ref. No.	Part No.	Qty.	Description
17	1-653046	1	Linkage-Pump/Lever
18	1-633152	1	Balljoint-Thread, LH
19	323-4	8	Screw-HH
20	1-653092	2	Arm-Control, Pump
21	1-803022	2	Screw-Set
22	1-804524	1	Nut
23	103-2200	1	RH Motion Control ASM
24	3296-39	6	Nut-Lock, NI
25	103-0407	2	Arm-Shaft, Control
26	98-5975	4	Washer-Belleville
27	323-6	4	Screw-HH
28	103-0632	1	RH Lever ASM
28:1	1-633257	1	Grip-Control, Motion
30	323-9	6	Screw-HH
31	1-603737	2	Bolt-Return, Neutral
32	1-603807	2	Spring-Return, Neutral
33	1-603735	2	Bushing-Flanged
36	3256-2	2	Washer-Flat
37	3220-2	2	Nut
38	1-303105	2	Yoke-Adjustable
39	1-808280	2	Pin-Clevis
40	3272-5	2	Pin-Cotter



Sheet No.:8

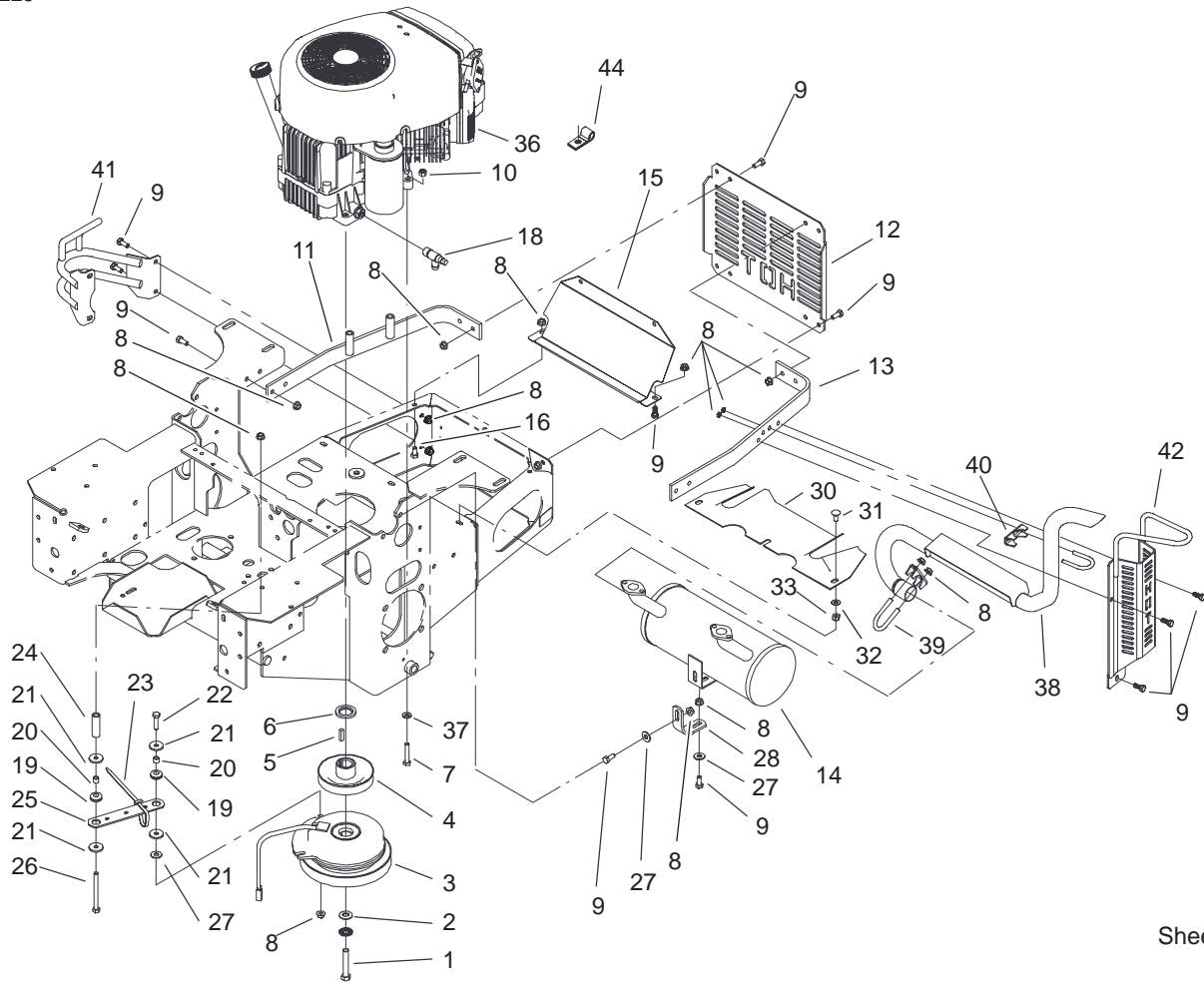
Hydraulic System Assembly

Ref. No.	Part No.	Qty.	Description
1	103-1942	2	Pump-Hydraulic
*1:1	105-6184	1	Seal Overhaul Kit
*1:2	105-6185	1	Plate-Valve
*1:8	103-2664	1	Input Shaft Kit
*1:9	103-2665	1	Thrust Bearing Kit
*1:10	103-2666	1	Cylinder Block Kit
*1:14	106-2053	1	Shock Valve Kit
3	103-1799	2	Elbow-90°
3:1	237-42	1	O-Ring
5	103-1988	3	Clamp-Hose
7	1-653156	2	Sheave
8	1-803050	4	Screw-Set
9	1-807272	2	Key
10	323-7	4	Screw-HH
11	3290-357	4	Nut-HHF
15	103-2644	1	Decal-Exhaust
16	103-1802	2	Elbow-HYD, 90°
16:1	237-42	1	O-Ring
17	103-1940	4	Adapter-HYD, Straight
17:1	237-79	1	O-Ring
17:2	1-603992	1	O-Ring
18	1-633605	2	Fitting-HYD, 90°
18:1	1-603992	1	O-Ring
18:2	237-80	1	O-Ring
19	1-653186	1	Hose-Front
20	1-653187	1	Hose-RH, Rear

Ref. No.	Part No.	Qty.	Description
21	103-2357	1	Hydraulic Hose ASM
22	103-1801	1	Adapter-Straight
22:1	237-42	1	O-Ring
23	103-1912	1	Adapter-Straight
23:1	237-42	1	O-Ring
24	103-1947	1	HYD Reservoir ASM
☆24:1		1	Reservoir-HYD
24:1:1	103-1948	1	Cap-Reservoir, HYD
24:1:2	103-1949	1	Gasket-Cap
24:2	1-523552	1	Decal-Tank, HYD
25	103-3071-03	1	Stand-Reservoir
26	322-3	1	Screw-HH
27	321-3	2	Screw-HH
29	103-3077	1	Hydraulic Hose ASM
30	103-2930	1	Hydraulic Hose ASM
32	103-2889	1	Filter Head ASM
32:1	103-1912	2	Adapter-Straight
32:1:1	237-42	1	O-Ring
33	32128-20	2	Nut-HF
34	1-633750	1	Filter-HYD
34	1-633752	1	Filter-HYD, Winter
35	321-6	2	Screw-HH
36	1-805004	2	Washer-Lock
37	103-1716	3	Clamp-Hose
38	322-5	1	Screw-HH
39	103-1680	2	Hose-LH

* Not illustrated

☆ Not serviced separately



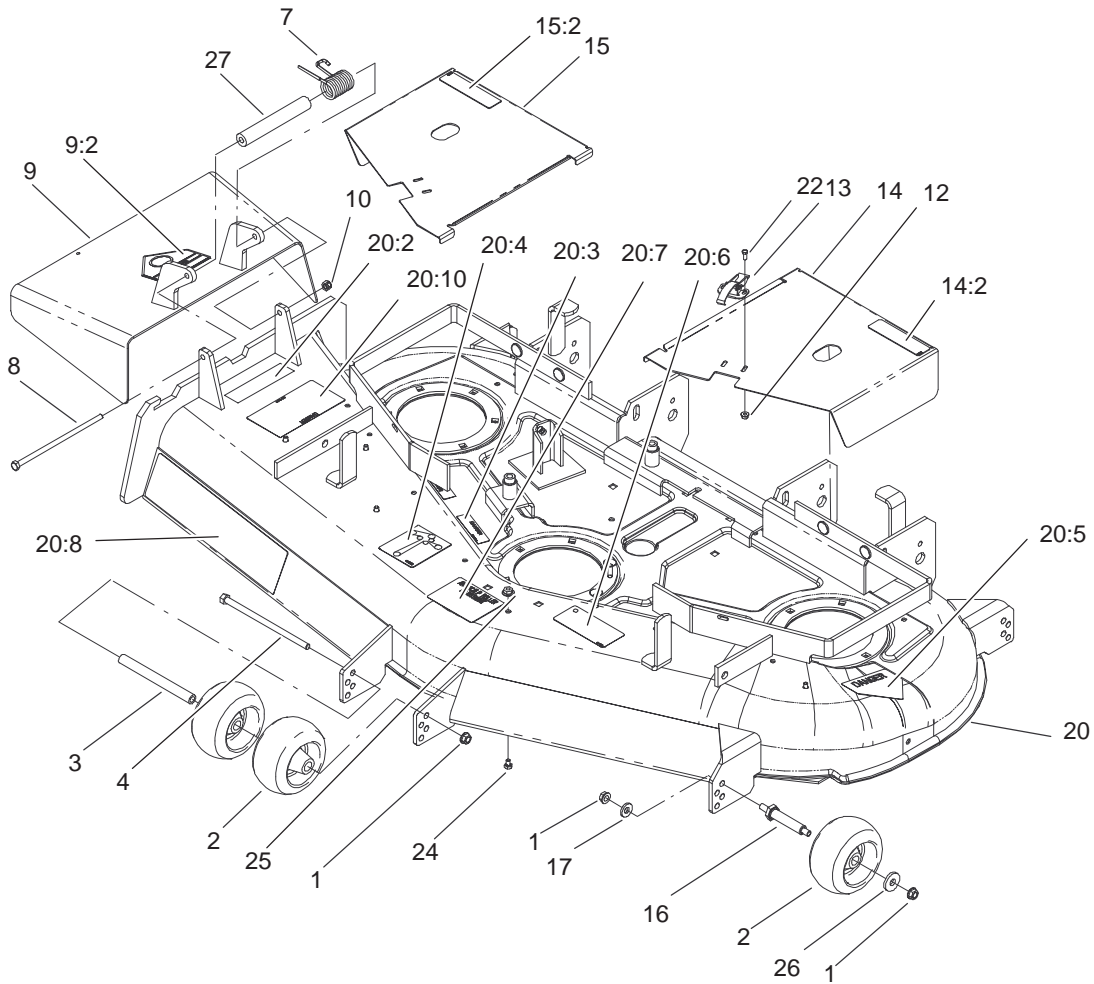
Sheet No.:10

Engine and Clutch Assembly

Ref. No.	Part No.	Qty.	Description
1	3212-10	1	Screw-HH
2	1-603610	2	Washer-Spring
3	103-0690	1	Clutch
4	1-653035	1	Sheave W/Hub
5	1-807259	1	Key
6	103-2308	1	Spacer-Crankshaft
7	322-9	4	Screw-HH
8	32128-20	27	Nut-HF
9	322-3	21	Screw-HH
10	32128-20	4	Nut-HF
11	103-3078-03	1	Strap-Guard, Engine RH
12	1-653095-03	1	Shield-Engine
13	103-2751-03	1	Strap-Guard, Engine LH
14	103-1323	1	Muffler
15	103-2560-03	1	Shield-Heat
16	322-2	4	Screw-HH
18	103-1963	1	Valve-Drain, Oil
19	1-633630	2	Grommet-Brake
20	1-633545	2	Spacer-Grommet
21	1-613235	4	Washer
22	322-6	1	Screw-HH
23	1-303335	2	Tie-Plastic
24	103-2614	1	Spacer
25	1-633543-03	1	Strap-Clutch, Brake

Ref. No.	Part No.	Qty.	Description
26	322-22	1	Screw-HH
27	3256-3	3	Washer-Flat
28	1-653196	1	Bracket-Support, Muffler
30	1-653539-03	1	Shield-Heat
31	3230-1	3	Screw-CARR
32	3256-23	3	Washer-Flat
33	3296-29	3	Nut-Lock, NI
☆36		1	Engine-Kohler Cv20s
37	1-303334	2	Washer-Spring
38	103-2599	1	Tailpipe
39	103-2630	1	Clamp
40	103-2631	1	Clamp
41	103-2564-03	1	RH Exhaust Guard ASM
42	103-2566-03	1	LH Exhaust Guard ASM
44	1-643312	1	Clip-Loom

☆ Not serviced separately



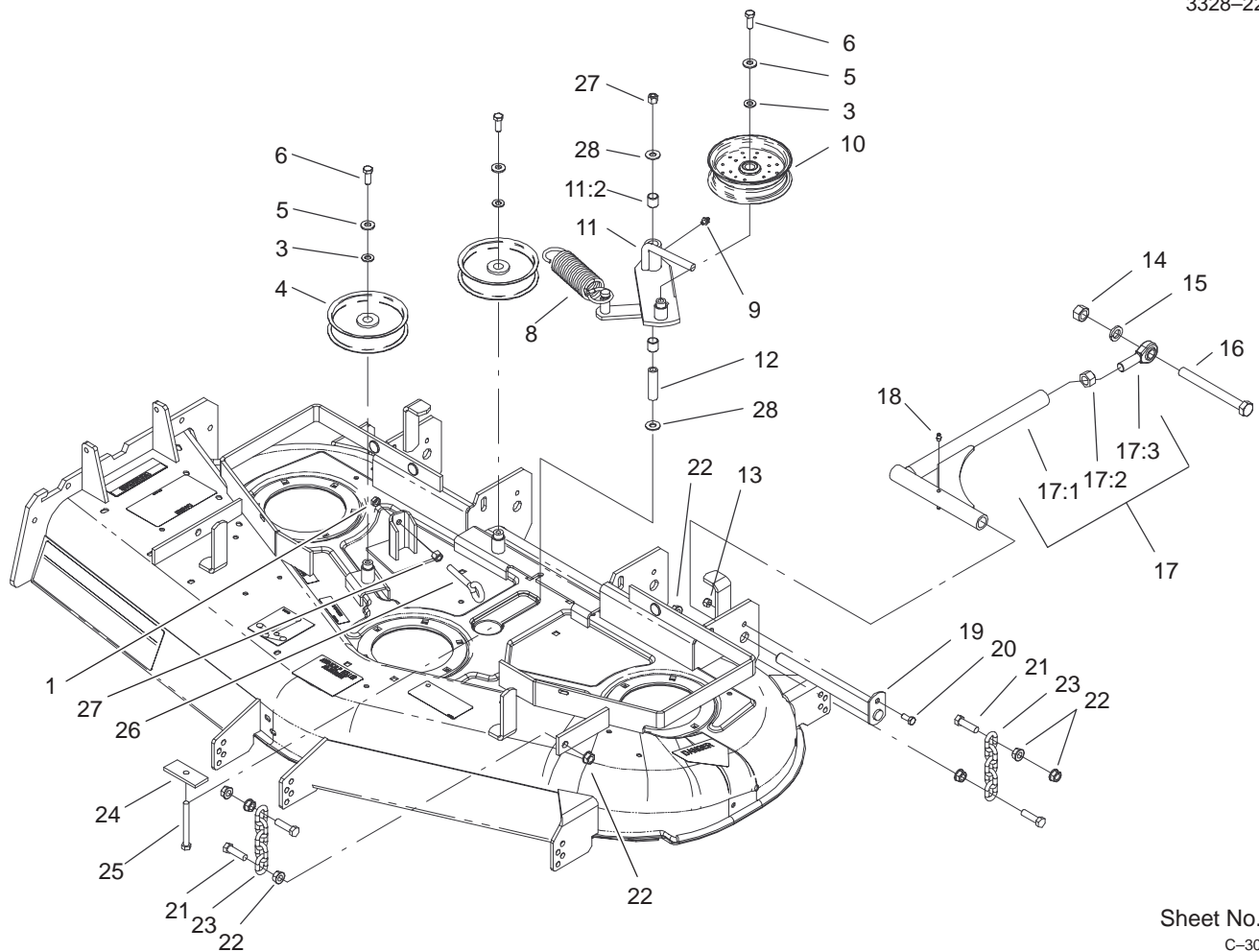
Sheet No.:14

Deck Assembly

Ref. No.	Part No.	Qty.	Description
1	3290-357	9	Nut-HHF
2	68-2730	6	Wheel-Gage
3	98-5967	1	Spacer
4	323-28	1	Screw-HH
7	104-8554	1	Spring-Torsion
8	322-50	1	Screw-HH
9	105-4623	1	Deflector ASM
9:2	93-1122	1	Decal-Danger
10	3296-29	1	Nut-Lock, NI
12	32128-17	4	Nut-Lock, Flange
13	249-21	2	Clamp-Slotted
14	99-3896	1	LH Cover ASM
14:2	67-5360	1	Decal-Danger
15	99-3895	1	RH Cover ASM
15:2	67-5360	1	Decal-Danger
16	99-2842	4	Spacer
17	98-5975	4	Washer-Belleville
20	105-1695	1	Deck ASM
☆20	106-5875	1	Z100/52" Deck ASM W/Decals
20:2	104-8569	1	Decal-Warning
20:3	98-5954	3	Decal-Missing, Cover
20:4	99-3943	1	Decal-Routing, Belt
20:5	43-8480	1	Decal-Danger
20:6	93-7818	1	Decal-Torque, Blade Bolt

Ref. No.	Part No.	Qty.	Description
20:7	98-3798	1	Decal-Wheel, Gage
20:8	98-5953	1	Decal-Sfs
20:10	66-1340	1	Decal-Danger
22	3290-321	4	Screw-HWH
24	321-1	6	Screw-HH
25	32128-33	6	Nut-HF
26	1-373034	4	Washer
27	105-4622	1	Spacer

☆ Not serviced separately

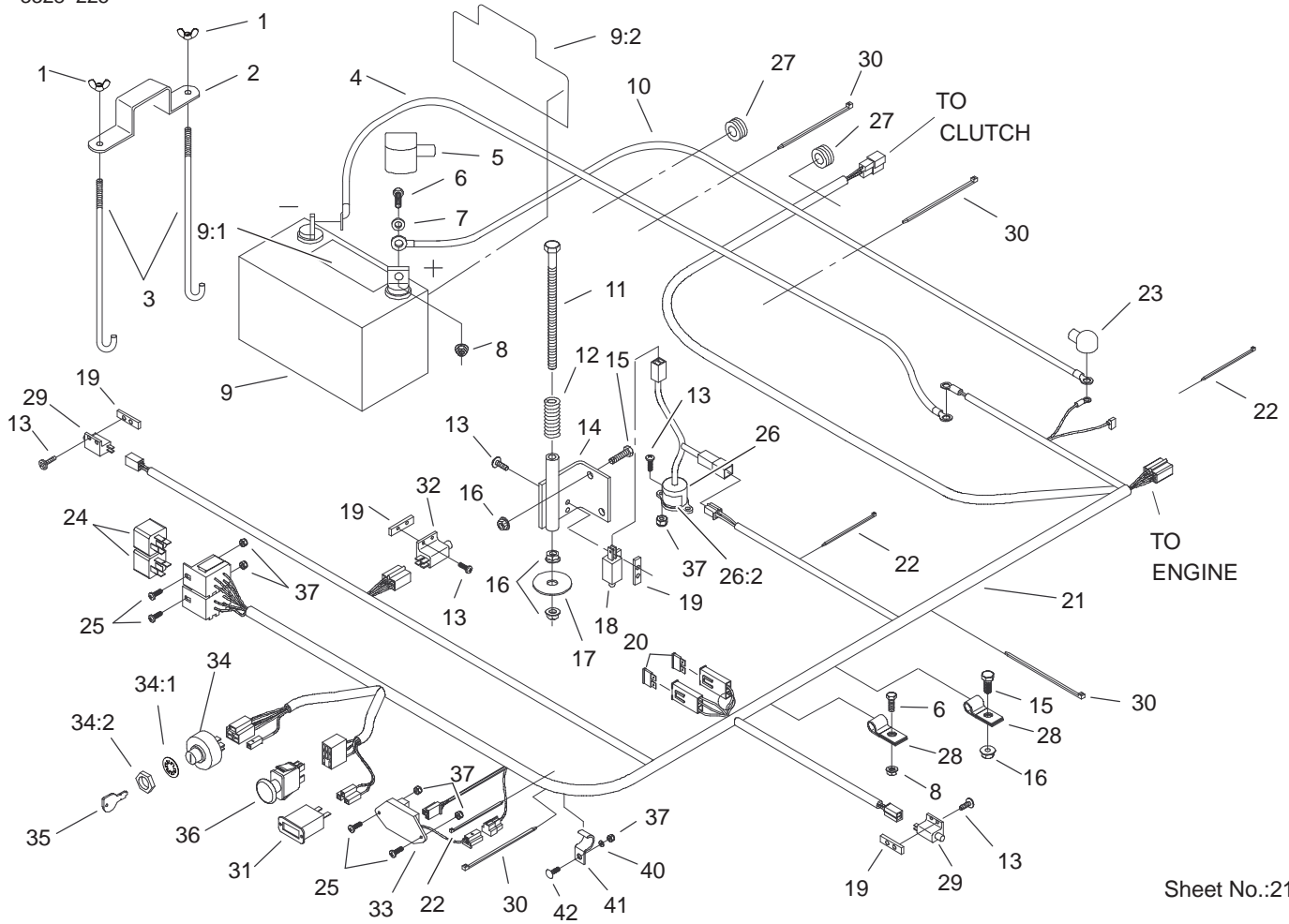


Sheet No.:16

C-3040

Idler, Pulley/Lift Strut, Chain Assembly

Ref. No.	Part No.	Qty.	Description	Ref. No.	Part No.	Qty.	Description
1	3217-7	1	Nut-Hex	25	1-800805	1	Screw-HH
3	3256-24	3	Washer-Flat	26	94-2547	1	Bolt-Eye
4	1-613098	2	Pulley-Idler	27	3296-39	2	Nut-Lock, NI
5	98-5975	3	Washer-Belleville	28	1-809107	2	Washer-Hardened
6	323-6	3	Screw-HH				
8	1-633151	1	Spring-Extension				
9	302-40	1	Fitting-Grease				
10	1-413099	1	Pulley-Idler				
11	99-3879	1	Idler Arm ASM				
11:2	1-513034	2	Sleeve-Bearing				
12	1-603384	1	Bushing-Pivot, Idler				
13	3296-29	2	Nut-Lock, NI				
14	3217-11	2	Nut-Hex				
15	3253-8	2	Washer-Lock				
16	1-800344	2	Screw				
17	103-1081	2	Strut ASM				
17:1	103-1072-01	1	Strut-Deck				
17:2	3219-6	1	Nut-Hex				
17:3	1-633029	1	Balljoint-Spherical				
18	302-19	4	Fitting-Grease				
19	1-632199-01	2	Pin-Strut, Deck				
20	322-3	2	Screw-HH				
21	1-800811	8	Screw-Cap, HH				
22	32128-37	16	Nut-HF				
23	1-633447	4	Chain-Lift, Deck				
24	99-3946-01	1	Plate-Retainer, Bolt				



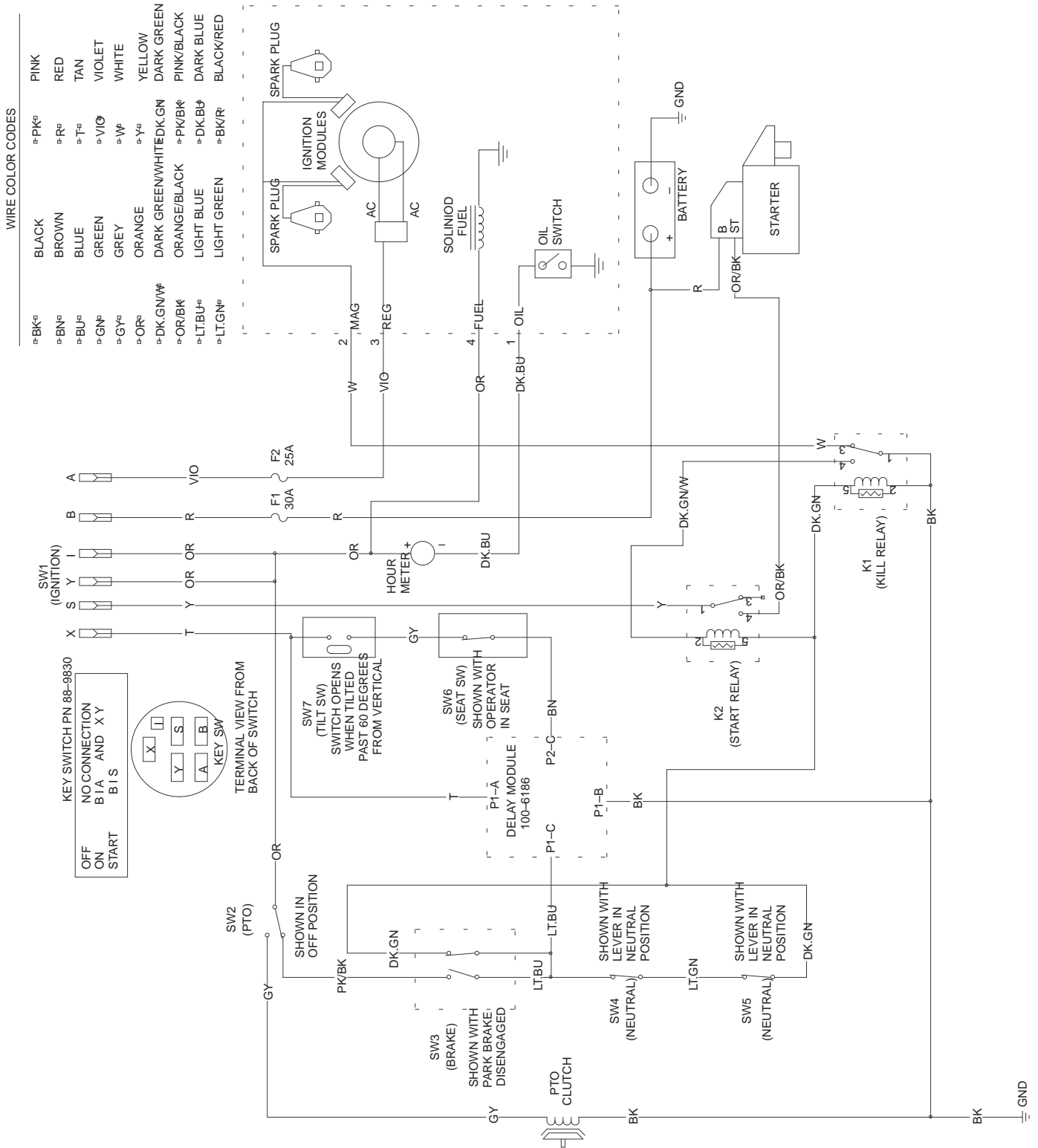
Sheet No.:21

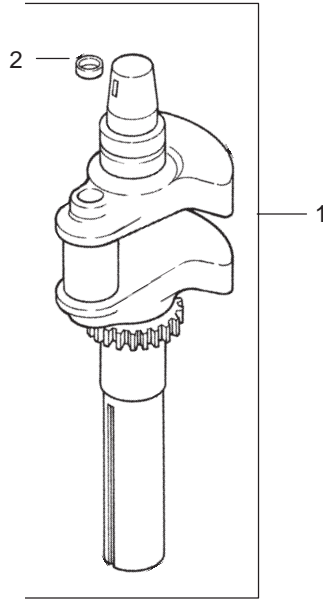
Electrical System Assembly

Ref. No.	Part No.	Qty.	Description
1	1-543792	2	Wingnut
2	1-633652-03	1	Strap-Holddown
3	1-633651	2	Bolt-Holddown
4	103-0705	1	Cable-Ground, Negative
5	1-543391	1	Insulator-Battery
6	321-4	3	Screw-HH
7	3256-2	2	Washer-Flat
8	32128-33	3	Nut-HF
9	105-1692	1	Battery
9:1	104-4163	1	Decal-Battery
9:2	104-4164	1	Decal-Battery
10	1-523281	1	Wire-Starter
11	1-800282	1	Screw-HH
12	1-523415	1	Spring-Switch, Seat
13	3290-500	10	Screw-PPH
14	1-652072-03	1	Bracket-Switch, Seat
15	322-3	3	Screw-HH
16	32128-20	5	Nut-HF
17	1-653036	1	Washer
18	1-513152	1	Switch-Closed, Normally
19	1-633181	4	Plate-Tapped
20	1-816001	2	Fuse-Type, Blade
21	103-0595	1	Harness-Wire
22	1-303287	2	Tie-Plastic

Ref. No.	Part No.	Qty.	Description
23	1-543393	1	Insulator-Solenoid
24	1-643275	2	Relay
25	1-807513	4	Bolt-CARR
26	1-644427	1	Tilt Switch ASM
26:2	1-643401	1	Decal-Switch, Mercury
27	1-543286	2	Grommet
28	1-633396	2	Clip-Loom
29	1-513051	2	Switch-Open, Normally
30	1-303335	4	Tie-Plastic
31	1-513374	1	Meter-Hour
32	1-633111	1	Switch
33	100-6186	1	Module-Delay, Seat
34	88-9830	1	Key Switch ASM
34:1	3254-5	1	Washer-Lock, Internal
34:2	218-461	1	Nut-HH
35	63-8360	2	Key-Ignition
36	1-633673	1	Switch-Delta
37	3296-2	7	Nut-Lock
40	3256-14	1	Washer-Flat
41	103-1193	1	Clip-Half, Loom
42	1-807533	1	Bolt-CARR

Electrical Schematic

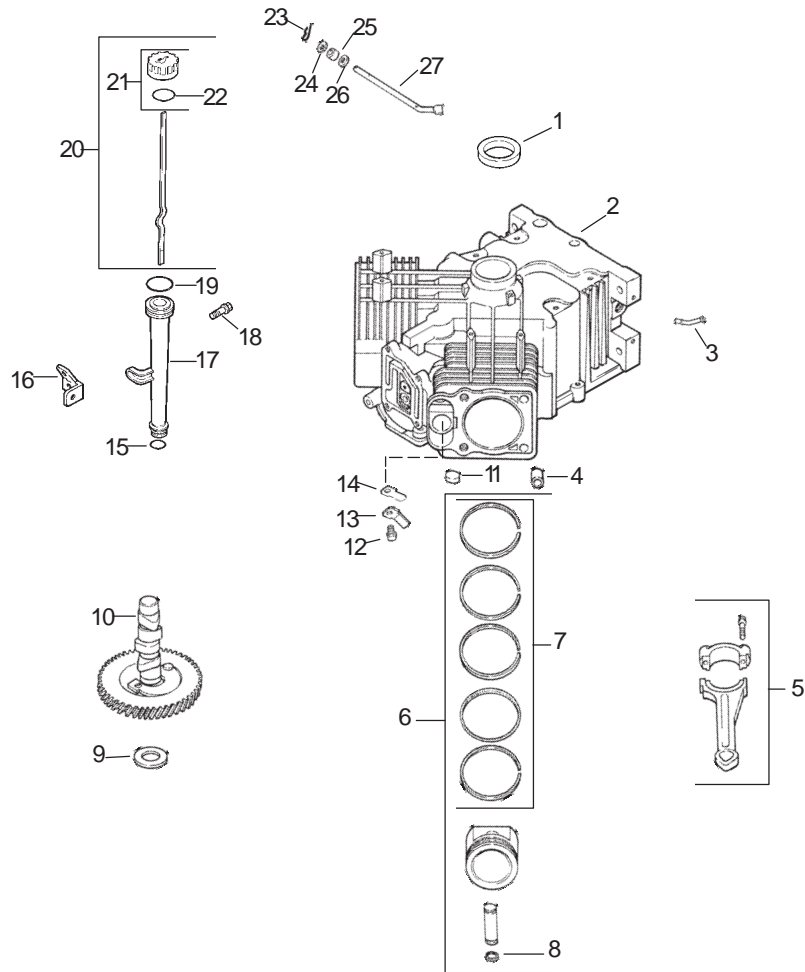




Group 1 – Crankshaft Assembly Kohler CV20S-PS65585

Ref. No.	Part No.	Qty.	Description
1	24 014 32-S	1	Crankshaft (Includes 2)
2	52 139 09-S	1	Plug, cup

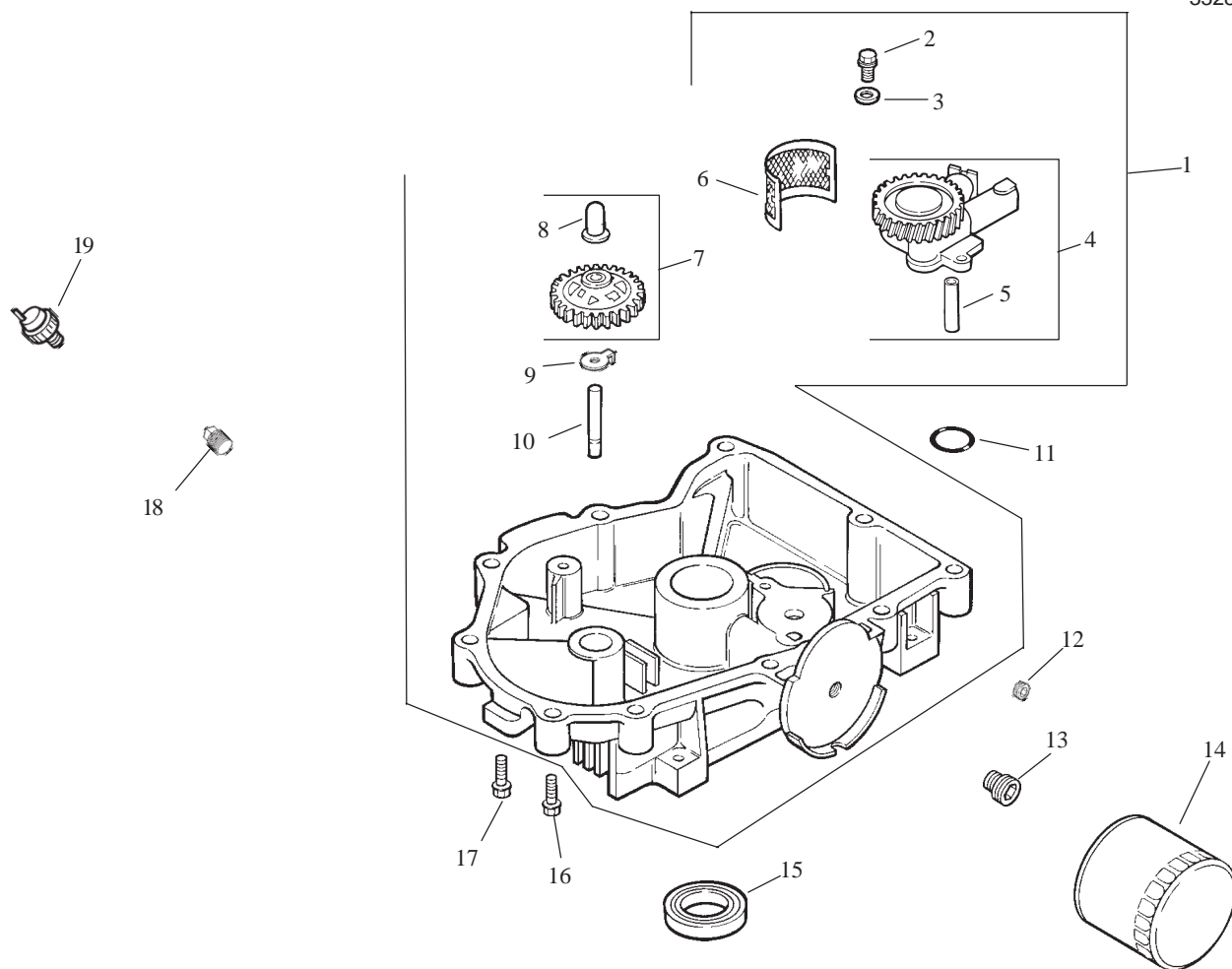
Ref. No.	Part No.	Qty.	Description



Group 2 – Crankcase Assembly Kohler CV20S-PS65585

Ref. No.	Part No.	Qty.	Description	Ref. No.	Part No.	Qty.	Description
1	24 032 01-S	1	Seal, oil front	10	12 422 12-S	1	Shim, camshaft (A.R.)
2	N/A	1	Crankcase (Service with Miniblock 24 782 24)	11	24 012 10-S	1	Camshaft (Includes 11,12)
3	24 294 13-S	1	Fitting	12	52 139 09-S	1	Plug, cup
4	24 380 13-S	6	Pin, dowel locating	13	M-545010-S	2	Screw, hex. flange M5x0.8x10
5	24 067 13-S	2	Connecting Rod (Std.)	14	24 018 04-S	2	Retainer, reed
6	24 067 14-S	2	Connecting Rod (.25)	15	24 402 05-S	2	Reed, breather
7	24 874 17-S	2	Piston w/Ring Set (Std.) (Includes 7,8)	16	12 153 01-S	1	O-Ring, lower oil fill tube
	24 874 18-S	2	Piston w/Ring Set (.25)	17	24 126 19-S	1	Bracket, oil fill tube
	24 874 19-S	2	Piston w/Ring Set (.50)	18	12 123 04-S	1	Tube, oil fill
	24 874 14-S	2	Piston w/Ring Set (.08)	19	M-545016-S	1	Screw, hex. flange M5x0.8x16
8	24 108 11-S	2	Ring Set (Std.)	20	24 038 04-S	1	Dipstick assembly (Includes 21,22)
9	24 108 12-S	2	Ring Set (.25)	21	25 755 13-S	1	Kit, oil fill cap (Includes 22)
	24 108 13-S	2	Ring Set (.50)	22	12 153 03-S	1	O-Ring, dipstick
	24 018 01-S	4	Retainer, piston pin	23	24 018 09-S	1	Ring, retainer
	12 422 09-S	1	Shim, camshaft (A.R.)	24	M-931010-S	1	Washer, plain 9 mm
	12 422 13-S	1	Shim, camshaft (A.R.)				
	12 422 07-S	1	Shim, camshaft (A.R.)				
	12 422 08-S	1	Shim, camshaft (A.R.)				
	12 422 10-S	1	Shim, camshaft				
	12 422 11-S	1	Shim, camshaft (A.R.)				

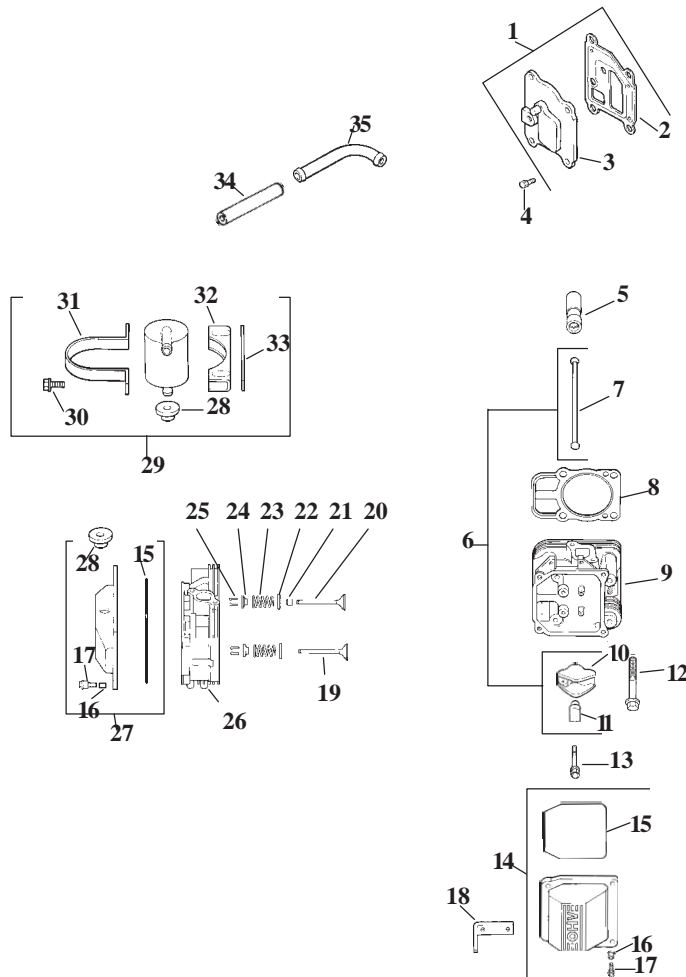
Obtain Parts From Kohler



Group 3 – Oil Pan/Lubrication Assembly Kohler CV20S-PS65585

Ref. No.	Part No.	Qty.	Description	Ref. No.	Part No.	Qty.	Description
1	24 199 07-S	1	Pan, oil assembly (Includes 2-10)	18	25 139 57-S	1	M8x1.25x45 Plug, pipe
2	M-645025-S	2	Screw, hex. flange M6x1.0x25	19	24 099 03-S	1	3/8" .T.F. sq. hd. Switch, pressure
3	M-631005-S	2	Washer, plain 6 mm				
4	24 393 08-S	1	Oil pump assembly (Includes 5)				
5	24 123 05-S	1	Tube, oil pickup				
6	24 162 26-S	1	Screen, oil				
7	24 043 12-S	1	Kit, governor gear w/pin (Includes 8)				
8	12 380 01-S	1	Pin, governor regulating				
9	52 448 02-S	1	Tab, locking				
10	12 144 02-S	1	Shaft, governor gear				
11	24 153 08-S	1	O-Ring				
12	25 139 62-S	1	Plug, hex. ctsk. 3/8"				
13	24 136 01-S	1	Nipple, oil filter				
14	52 050 02-S	1	Filter, oil				
15	52 032 08-S	1	Seal, oil (PTO end)				
16	24 086 17-S	1	Screw, hex. flange M8x1.25x45				
17	24 086 16-S	9	Screw, hex. flange				

Obtain Parts From Kohler

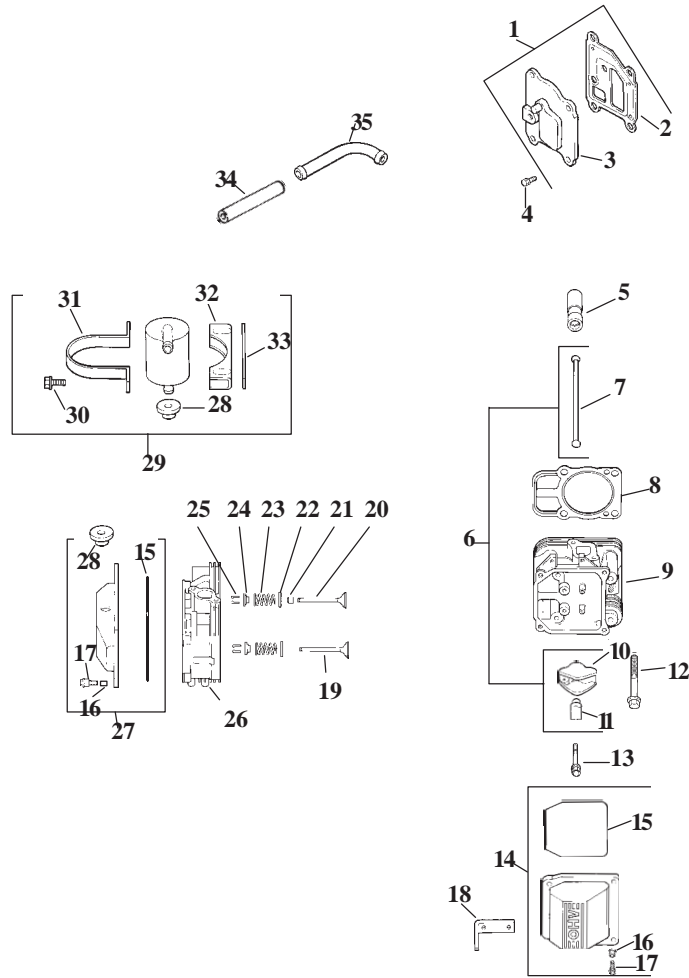


Group 4 – Head/Valve/Breather Assembly Kohler CV20S-PS6585

Ref. No.	Part No.	Qty.	Description
1	24 033 03-S	1	Kit, breather cover w/gasket (Includes 2,3)
2	24 041 23-S	1	Gasket, breather
3	24 096 59-S	1	Cover, breather
4	M-645020-S	4	Screw, hex. flange M6x1.0x20
5	25 351 01-S	4	Lifter, valve
6	24 755 66-S	1	Kit, valve train (Includes 8,11,12)
7	24 411 05-S	4	Rod, push
8	24 041 08-S	2	Gasket, cylinder head
9	24 318 12-S	1	Head assembly, #2 cylinder
10	25 186 01-S	4	Arm, rocker
11	24 599 01-S	4	Pivot, rocker arm
12	12 086 16-S	8	Screw, hex. flange M10x1.5x90
13	M-640034-S	4	Screw, hex. flange M6x1.0x34
14	24 755 75-S	1	Kit, valve cover plain (Includes 15-17)
15	24 153 16-S	1	O-Ring
16	24 112 08-S	4	Spacer
17	M-651030-S	4	Screw, hex. flange

Ref. No.	Part No.	Qty.	Description
18	24 445 01-S	1	M6x1.0x30 Strap, lifting
19	24 016 01-S	2	Valve, exhaust (Std.)
	24 016 02-S	2	Valve, exhaust (.25)
20	24 017 01-S	2	Valve, intake (Std.)
	24 017 02-S	2	Valve, intake (.25)
20	24 032 05-S	2	Seal, valve stem
22	235011-S	4	Retainer, spring
23	24 089 02-S	4	Spring, valve
24	12 173 01-S	4	Cap, valve spring
25	12 755 03-S	4	Kit, retainer
26	24 318 11-S	1	Head assembly, #1 cylinder
27	24 755 76-S	1	Kit, valve cover-breather (Includes 15-17,28)
28	25 313 02-S	1	Grommet, rubber
29	24 755 57-S	1	Kit, breather separator (Includes 30,32-35)
30	M-545016-S	2	Screw, hex. flange M5x0.8x16
31	24 445 02-S	1	Strap, breather
32	24 126 44-S	1	Bracket, breather separator

Obtain Parts From Kohler

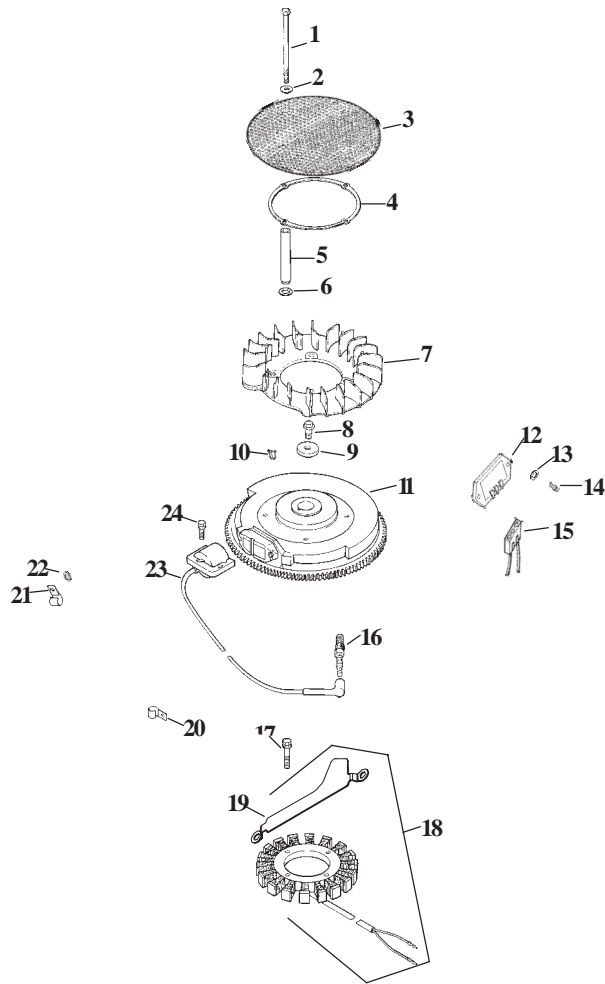


Group 4 – Head/Valve/Breather Assembly (Continued) Kohler CV20S-PS65585

Ref. No.	Part No.	Qty.	Description
33	24 112 12-S	1	Spacer
34	24 294 01-S	1	Fitting
35	24 326 54-S	1	Hose, breather

Ref. No.	Part No.	Qty.	Description

Obtain Parts From Kohler

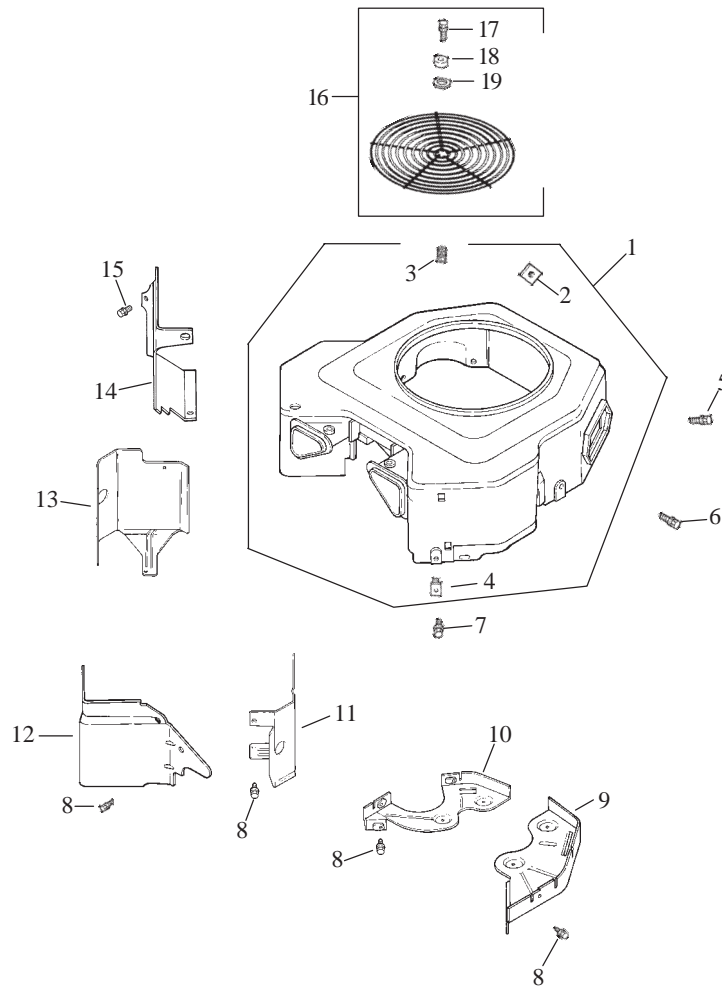


Group 5 – Ignition/Charging Assembly Kohler CV20S-PS65585

Ref. No.	Part No.	Qty.	Description
1	24 755 79-S	1	Kit, chopper screen (Includes 2-7, and 41 037 10-S)
2	M-603100-S	4	Screw, hex. hd. M6x1.0x100
3	X-25-53-S	4	Washer, plain 1/4"
4	24 162 25-S	1	Screen, grass
5	24 141 06-S	1	Ring, support
6	24 112 04-S	4	Spacer, grass screen
7	24 468 11-S	1	Screw, set
8	24 157 03-S	1	Fan
9	12 086 14-S	1	Screw, hex. flange M10x1.5x46
10	12 468 03-S	1	Washer, plain 3/8"
11	X-42-15-S	1	Key
12	24 025 04-S	1	Flywheel
13	25 403 03-S	1	Rectifier-regulator
14	X-25-92-S	2	Washer, plain 3/16"
15	24 086 18-S	2	Screw, phillips hd. 11-16x7/8
16	236602-S	1	Connector (3 contact)
17	12 132 02-S	2	Spark Plug
18	M-548025-S	2	Screw, hex. cap M5x0.8x25

Ref. No.	Part No.	Qty.	Description
19	54 755 09-S	1	Kit, 15 amp stator (Includes 20)
20	24 126 71-S	1	Bracket, stator wire
21	235173-S	1	Clip, cable
22	48 154 02-S	1	Clip, cable
23	X-25-63-S	1	Washer, plain 1/4"
24	24 584 01-S	2	Module, ignition
25	M-545020-S	4	Screw, hex. flange M5x0.8x20
*	X-22-11-S	1	Washer, lock 1/4" (to ground rectifier-regulator)
*			
*	24 176 07-S	1	Harness, wiring
*	24 518 12-S	1	Lead, black (rectifier-regulator 5"-12 gauge - insulated grip barrel eyelets)
*	24 113 18-S	1	Decal, grass screen
*	25 454 03-S	3	Tie, wire

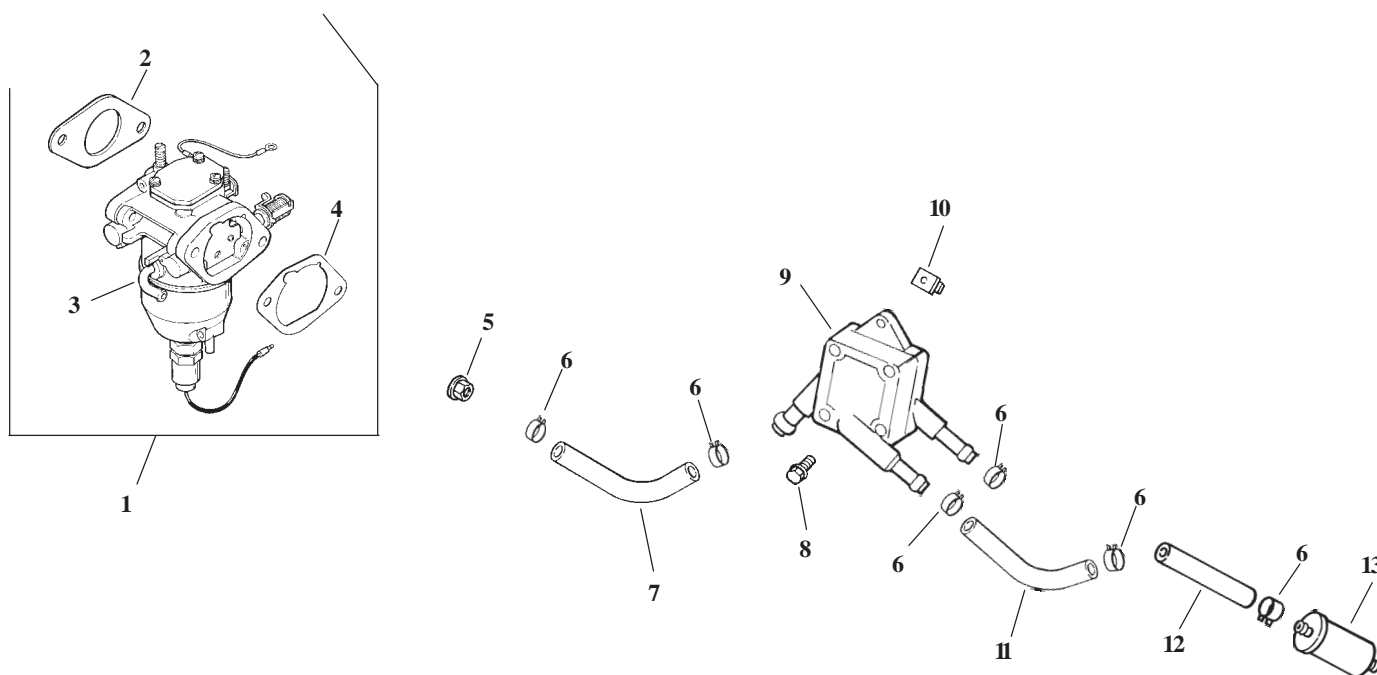
* Not Illustrated
Obtain Parts From Kohler



Group 6 – Blower Housing Assembly Kohler CV20S-PS65585

Ref. No.	Part No.	Qty.	Description	Ref. No.	Part No.	Qty.	Description
1	24 027 119-S	1	Housing, blower (Includes 2-4 & 24 332 01-S)	15	M-545010-S	2	Screw, hex. flange M5x0.8x10
2	24 100 01-S	2	Nut, plastic	16	24 755 94-S	1	Kit, guard (Includes 17-19 & 24 332 01-S)
3	25 086 43-S	1	Screw, set	17	24 086 39-S	3	Screw, pan hd. M5x0.8x15
4	24 100 02-S	2	Nut, plastic	18	24 112 09-S	3	Spacer
7	M-545020-S	4	Screw, hex. flange M5x0.8x20	19	24 468 10-S	3	Washer, plain 1/4"
8	M-545016-S	3	Screw, hex. flange M5x0.8x16		*24 332 01-S	3	Insert, threaded
5	M-551016-S	1	Screw, hex. flange M5x0.8x16		*24 113 95-S	1	Decal, 20 HP
8	M-645016-S	6	Screw, hex. flange M6x1.0x16				
9	24 146 16-S	1	Plate, backing – # 2 side				
10	24 146 20-S	1	Plate, backing – # 1 side				
11	24 063 20-S	1	Baffle, cylinder barrel #2 side				
12	24 063 14-S	1	Baffle, valley – #2 side				
13	24 063 58-S	1	Baffle, cylinder barrel – # 1 side				
14	24 063 23-S	1	Baffle, valley – #1 side				

* Not Illustrated
Obtain Parts From Kohler

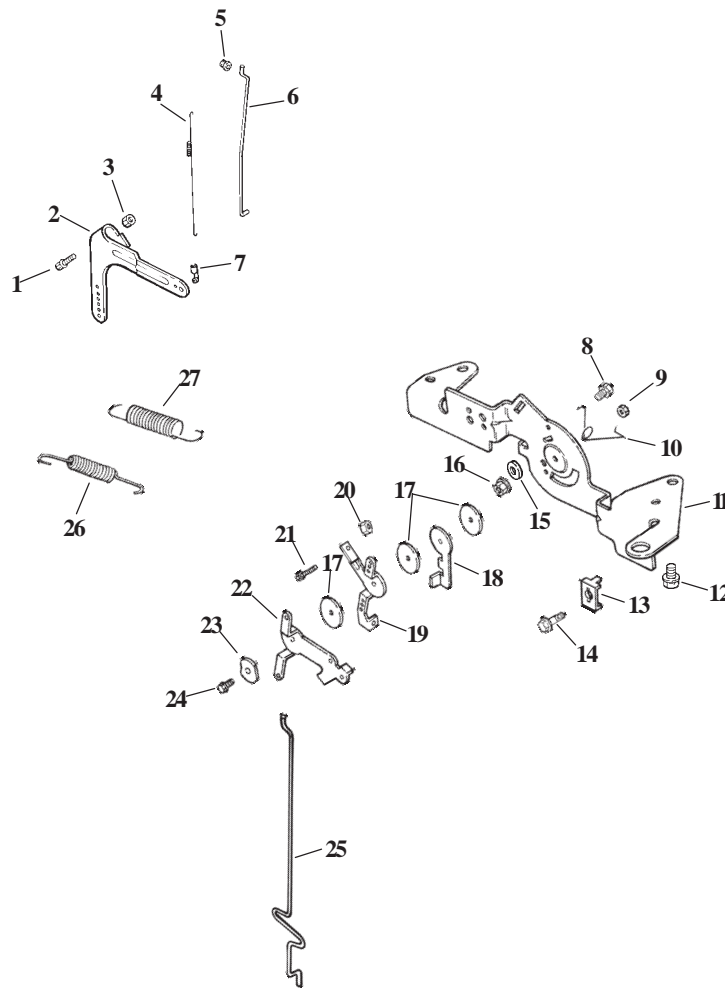


Group 8 – Fuel System Assembly Kohler CV20S-PS65585

Ref. No.	Part No.	Qty.	Description	Ref. No.	Part No.	Qty.	Description
1	24 853 17-S	1	Kit, carburetor w/gaskets (Includes 2-4)	12	25 353 03-S	1	Line, fuel 12-1/3"
2	24 041 15-S	1	Gasket, carburetor	13	24 050 02-S	1	Filter, fuel
3	24 053 17	1	Carburetor assembly (For information only not available separately) (Service with kits 24 757 18-S, 24 757 19-S, 24 757 20-S, & 24 757 22-S)	*	24 757 18-S	1	Kit, overhaul w/gaskets
4	24 041 14-S	1	Gasket, air cleaner base	*	24 757 19-S	1	Kit, choke repair w/gaskets
5	M-641060-S	2	Nut, hex. flange M6x0.8	*	24 757 20-S	1	Kit, gasket w/gaskets
6	X-426-9-S	6	Clamp, hose	*	24 757 22-S	1	Kit, solenoid replacement w/gaskets
7	24 353 33-S	1	Line, fuel				
8	24 086 12-S	2	Screw, hex. cap M6x1.7x18				
9	24 393 16-S	1	Pump, fuel				
10	24 100 01-S	2	Nut, plastic				
11	24 353 03-S	1	Line, fuel 10-5/8"				

* Not Illustrated

Obtain Parts From Kohler

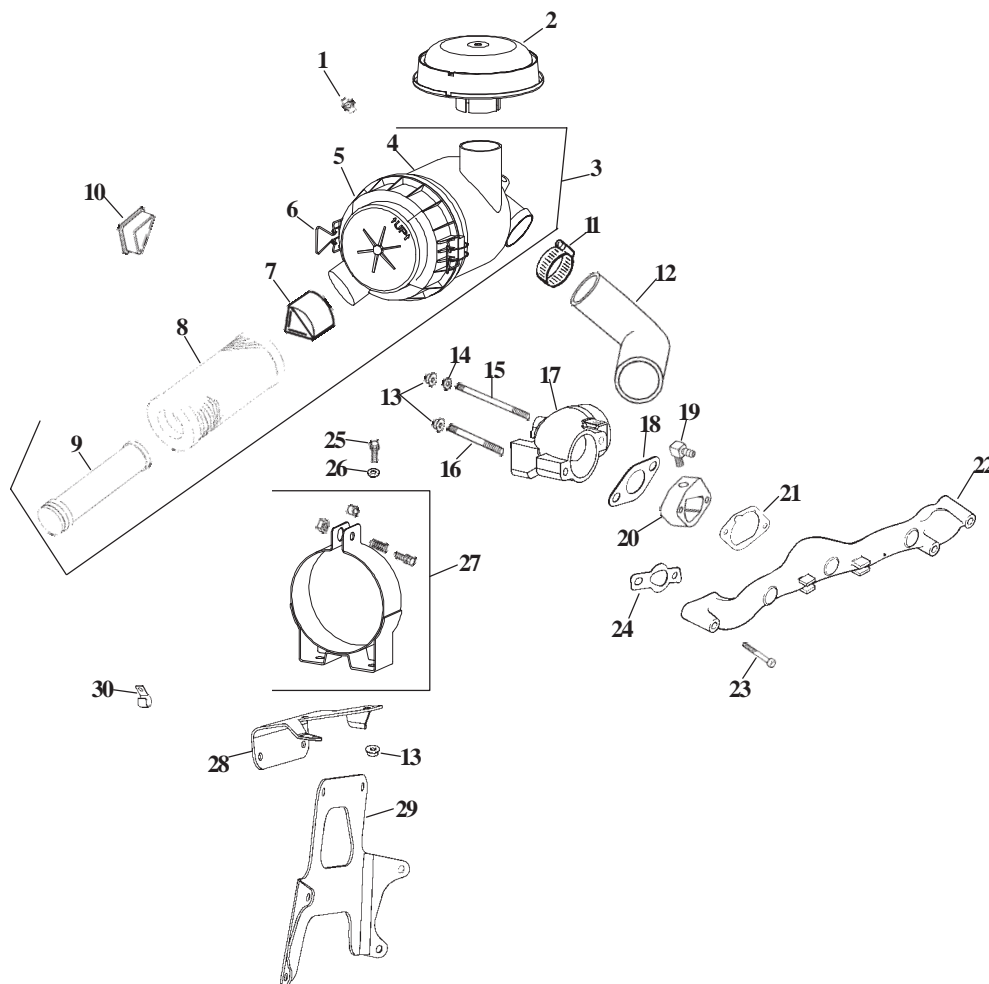


Group 9 – Engine Control Assembly Kohler CV20S-PS65585

Ref. No.	Part No.	Qty.	Description
1	24 211 03-S	1	Bolt, rd. hd. sq. neck M6x1.0x25
2	24 090 33-S	1	Lever, governor
3	M-641060-S	1	Nut, hex. flange M6x1.0
4	24 089 01-S	1	Spring, linkage
5	25 158 08-S	1	Bushing, linkage retaining
6	24 079 04-S	1	Linkage, throttle
7	25 158 11-S	2	Bushing, throttle linkage
11	24 126 59-S	1	Bracket, control
12	M-645016-S	4	Screw, hex. flange M6x1.0x16
13	12 237 01-S	2	Clamp, cable
14	M-545016-S	2	Screw, hex. flange M5x0.8x16
15	24 090 07-S	1	Lever, throttle control
16	X-20-1-S	1	Washer, lock
17	M-541050-S	1	Nut, hex. flange M5x0.8
18	24 468 01-S	3	Washer
19	24 089 46-S	1	Spring, governor
20	M-446030-S	1	Nut, hex. M4x0.7

Ref. No.	Part No.	Qty.	Description
21	24 090 03-S	1	Lever, throttle control
22	M-403025-S	1	Screw, hex. flange
23	24 089 51-S	1	Spring, throttle limiter
24	24 090 05-S	1	Lever, choke
26	41 468 03-S	1	Washer, wave
27	24 079 05-S	1	Linkage, choke

Obtain Parts From Kohler



Group 10 – Air Intake/Filtration Assembly Kohler CV20S-PS65585

Ref. No.	Part No.	Qty.	Description	Ref. No.	Part No.	Qty.	Description
1	25 139 20-S	1	Plug, pipe	17	24 029 43-S	1	Adapter, elbow
2	25 324 02-S	1	Hood, air cleaner	18	24 041 44-S	1	Gasket, air cleaner adapter
3	25 048 07-S	1	Assembly, air cleaner (Includes 4-9)	19	25 155 38-S	1	Connector, hose
4	25 081 01-S	1	Housing, heavy duty air cleaner	20	24 029 44-S	1	Adapter, breather fitting
5	25 096 06-S	1	Cover assembly, plastic air cleaner	21	24 041 14-S	1	Gasket, air cleaner base
6	25 154 05-S	2	Clip	22	24 164 06-S	1	Manifold, intake
7	24 462 07-S	1	Valve, dust ejector	23	25 086 84-S	4	Screw, hex. flange M6x1.0x55
8	25 083 01-S	1	Element, air cleaner primary	24	24 041 01-S	2	Gasket, intake manifold
9	25 083 04-S	1	Element, air cleaner safety	25	M-639016-S	2	Screw, hex. flange M6x1.0x16
10	24 096 17-S	2	Cover, blower housing	26	X-25-73-S	2	Washer, plain 1/4
11	25 237 07-S	2	Clamp, hose	27	25 126 02-S	1	Bracket, air cleaner
12	24 326 53-S	1	Hose, air cleaner	28	24 126 104-S	1	Bracket, air cleaner mounting
13	M-647060-S	4	Nut, hex. lock M6x1.0x60	29	24 126 105-S	1	Bracket, main support
14	25 468 01-S	1	Washer, copper 1/4	30	47 154 01-S	1	Clip, cable
15	24 072 10-S	1	Stud M6x1.0x180		*25 454 04-S	1	Tie, wire
16	M-629140-S	1	Stud, carburetor M6x1.0x40				

* Not Illustrated

Obtain Parts From Kohler

