



Update Kit

Workman® 1100 and Twister™ 1400 Utility Vehicle

Part No. 104-7272

Form No. 3328-286

Installation Instructions

Position the machine on a level surface, stop the engine, remove the key, and disconnect the negative (–) battery terminal.



Caution



If you leave the key in the ignition switch, someone could accidentally start the engine and seriously injure you or other bystanders.

Remove the key from the ignition switch before you do any maintenance.

Replacing the Accelerator Pedal

1. If you have a floor mat, remove it from around the accelerator and brake pedals.
2. Remove the metal plate on the floor surrounding the pedals.
3. Disconnect the accelerator cable and spring from the accelerator pedal.
4. Remove the bolt securing the accelerator pedal pivot rod (front rod) and pull out and discard the rod (Fig. 1).

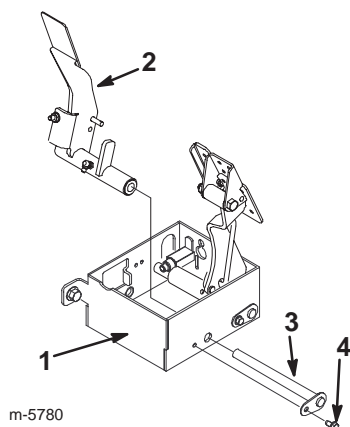
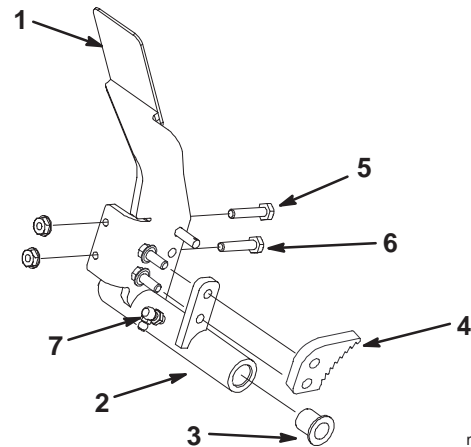


Figure 1

- | | |
|----------------------|--------------------------------|
| 1. Pedal box | 3. Accelerator pedal pivot rod |
| 2. Accelerator pedal | 4. Bolt |

5. Remove the accelerator pedal (Fig. 1).
6. Remove the brake pawl from the old accelerator pedal (Fig. 2).



m-5778

Figure 2

- | | |
|------------------------|--|
| 1. Accelerator pedal | 5. Start switch bolt (Workman 1100 only) |
| 2. Pedal mounting tube | 6. Stop bolt |
| 3. Pivot bushing | 7. Grease fitting |
| 4. Brake pawl | |
7. Install the brake pawl on the new accelerator pedal (Fig. 2). Use red Locktite 272 or equivalent on the bolts.
 8. Measure the height of the stop bolt on the old accelerator pedal (from the back of the pedal to the top of the bolt head) and then remove it and the start switch bolt (Workman 1100 only), discarding the rest of the accelerator pedal assembly (Fig. 2).
 9. Install the stop bolt and nut on the new accelerator pedal, adjusting it to the same height it was set to on the old pedal (Fig. 2), but do not tighten the jam nut.
 10. On Workman 1100 vehicles, loosely install the start switch bolt (Fig. 2), but do not tighten the jam nut.
 11. Install a new grease fitting into the accelerator pedal mounting tube (Fig. 2).
- Note:** Use only low temperature, lithium grease in this fitting (Toro part number 505-101 or equivalent).
12. Install 2 bushings into the ends of the mounting tube of the new accelerator pedal (Fig. 2).

13. Insert the accelerator pedal assembly into the pedal box and secure it into the front position using the new black pivot rod supplied with the kit and the bolt removed previously (Fig. 1).
14. Connect the accelerator cable and spring to the accelerator pedal.

Adjusting the Stop Bolt

1. Press the brake in as far as possible and set the parking brake.
2. Turn out the stop bolt until it contacts the pedal box.
3. Set the jam nut on the stop bolt to secure it.

Checking and Adjusting the Start Switch Bolt (Workman 1100 Vehicles Only)

1. Release the parking brake.
2. Check and/or set the distance between the head of the start switch bolt and the body of the start switch to 5/8 inch (1.6 cm) (Fig. 3).

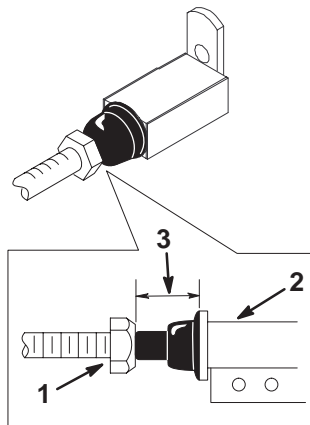


Figure 3

1. Start switch bolt
2. Start switch
3. 5/8 inch (1.6 cm)

Important The engine should not turn over when you are setting the parking brake. If it does, check the start switch bolt adjustment and adjust it as needed by reducing the distance from the bolt to the switch body. **Do not** bottom out the bolt head against the switch body.

Completing the Installation

1. Install the metal plate surrounding the pedals.

2. Install the floor mat if necessary.

Replacing the Steering Pitman Arm Retaining Bolt

1. Remove the existing retaining bolt and washer (located under the dash) and discard them (Fig. 4).
2. Install a new flange-head bolt with blue patch lock and a step washer with the step pointing down into the steering pitman arm (Fig. 4).

Important Never reuse a steering pitman arm retaining bolt once you have removed it.

3. Torque the bolt to 30 ft-lb (41 N·m).

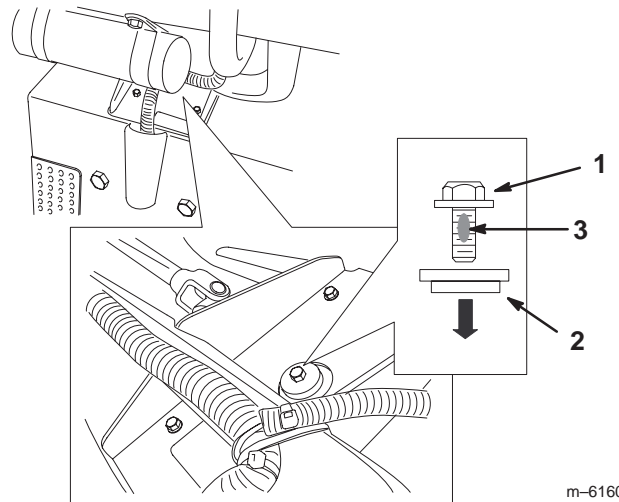


Figure 4

1. Flange-head bolt
2. Step washer
3. Blue patch lock

Checking and Adjusting Neutral

If the vehicle has a neutral position on the shift lever, which controls the neutral in the transaxle, take the following steps to ensure that the neutral shift lever operates the transaxle neutral correctly:

1. Set the shift lever into the Neutral position.
2. Ensure that the neutral bracket is in the neutral position (level) by turning the drive clutch (Fig. 5). The vehicle should not roll back and forth. If it does, manually move the neutral bracket to the neutral position.

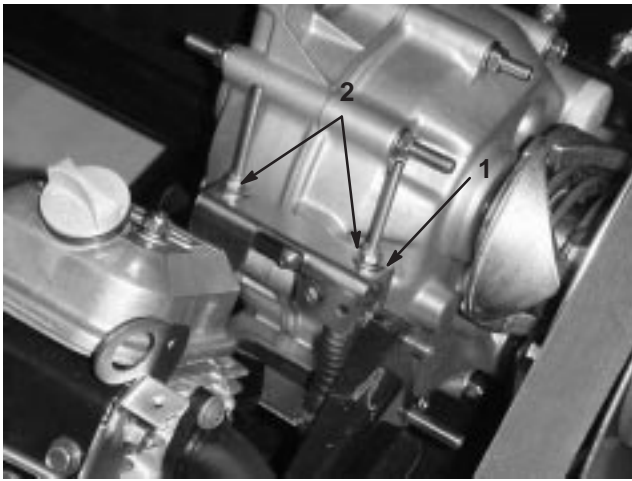


Figure 5

- | | |
|--------------------|-------------|
| 1. Neutral bracket | 2. Locknuts |
|--------------------|-------------|

3. Tighten one of the locknuts (Fig. 5) just enough to take the slack out of the shift cable.

Note: You must hold the threaded shaft below the bracket to tighten the locknut on top.

4. Tighten the other locknut just enough to take the slack out of the other shift cable.
5. Pull up on each shift cable and ensure that there is no gap between the nut/washer and the neutral bracket (Fig. 6). If there is a gap, tighten the nut.

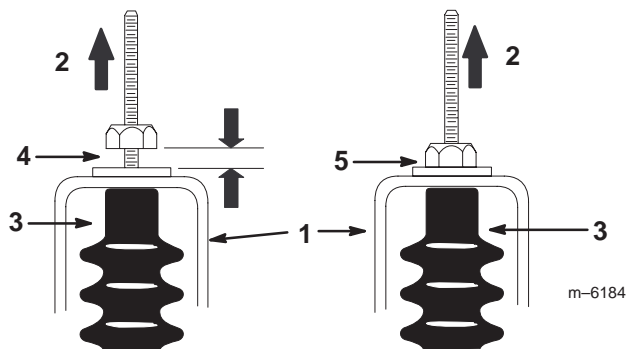


Figure 6

- | | |
|--------------------|--------------------------------|
| 1. Neutral bracket | 4. Wrong, must tighten the nut |
| 2. Pull up | 5. Correct adjustment |
| 3. Cable boot | |

6. Start the engine and shift into Forward, Reverse, and Neutral several times to ensure that the neutral bracket is operating properly.

