



## Update Kit Workman® 2100 Utility Vehicle Part No. 104-7275

Form No. 3328-287

### Installation Instructions

Position the machine on a level surface, stop the engine, remove the key, and disconnect the negative (–) battery terminal.



#### Caution



If you leave the key in the ignition switch, someone could accidentally start the engine and seriously injure you or other bystanders.

Remove the key from the ignition switch before you do any maintenance.

## Replacing the Accelerator Pedal Pivot Rod

1. If you have a floor mat, remove it from around the accelerator and brake pedals.
2. Remove the metal plate on the floor surrounding the pedals.
3. Remove the bolt securing the accelerator pedal pivot rod (front rod) and pull out and discard the rod (Fig. 1).

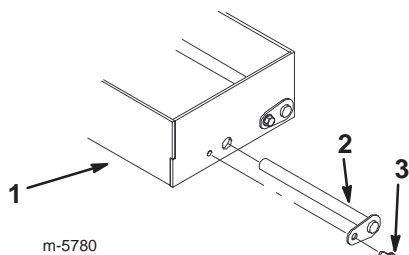


Figure 1

1. Pedal box
2. Accelerator pedal pivot rod
3. Bolt

4. Insert the new black pivot rod supplied with the kit and the bolt removed previously, securing the accelerator pedal (Fig. 1).

**Note:** Use only low temperature, lithium grease on the front of the accelerator pedal (Toro part number 505-101 or equivalent).

5. Install the metal plate surrounding the pedals.
6. Install the floor mat if necessary.

## Replacing the Governor Cable

### Installing the New Governor Cable

1. Drill out the rivet securing the security bracket and remove it (Fig. 2).

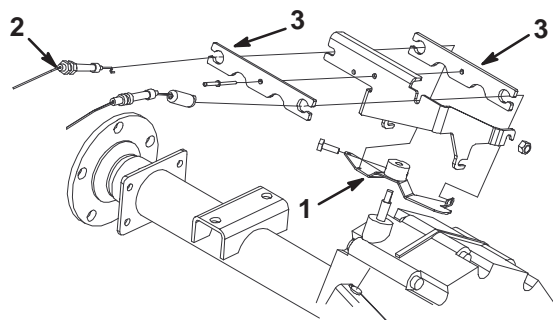
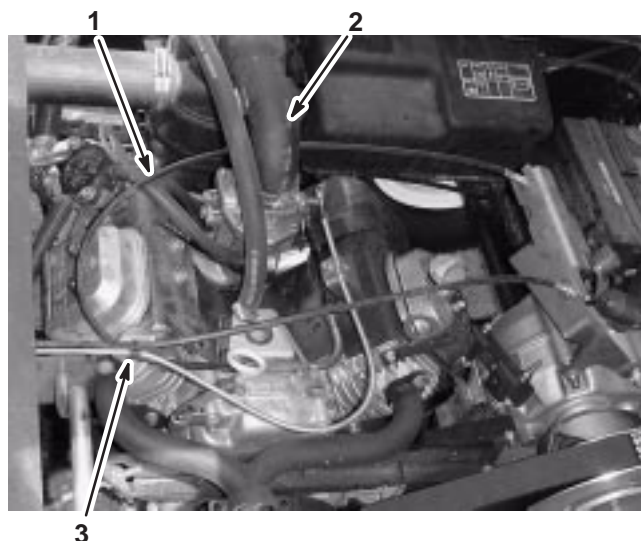


Figure 2

1. Governor bracket
2. Governor cable
3. Security bracket

2. Cut the cable tie securing the governor, throttle, and choke cables to the cable bracket (Fig. 3).
3. Remove and discard the governor cable (cable running from the carburetor to the governor bracket) (Fig. 2).

4. Install the new governor cable, routing it as illustrated in Figures 2 and 3.



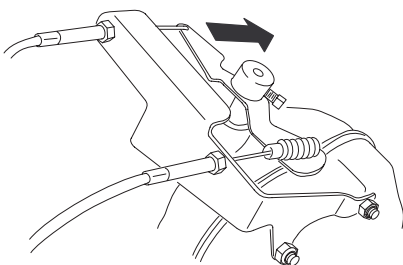
**Figure 3**

1. Governor cable
2. Route the governor cable under the air cleaner and breather hoses.
3. Cable bracket with cables and cable tie attached.

5. Secure the cables to the cable bracket as illustrated in Figure 3 with the new cable tie.

## Adjusting the Governor Cable

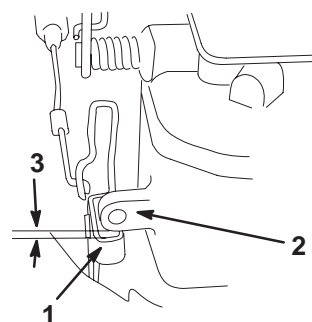
1. Turn the governor bracket clockwise as far as possible and hold it. (Fig. 4).



**Figure 4**

m-6163

2. While holding the governor bracket, ensure that there is 0.01 to 0.15 inch (0.2 to 3.5 mm) gap between the input lever and the high idle stop (Fig. 5). If not, adjust the governor cable.

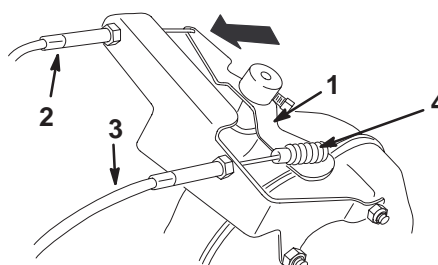


m-6165

**Figure 5**

1. Carburetor input lever
2. Idle stop
3. 0.01 to 0.15 inch (0.2 to 3.5 mm)

3. Turn the governor bracket counterclockwise as far as possible and hold it (Fig. 6).

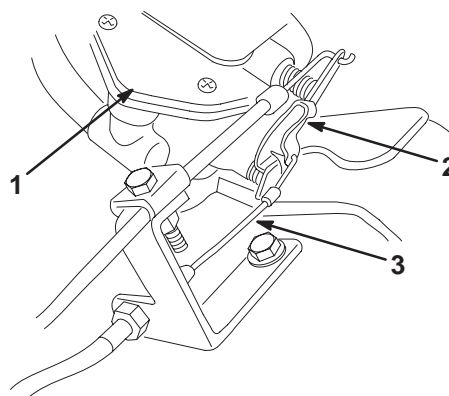


m-6162

**Figure 6**

1. Governor bracket
2. Governor cable
3. Throttle cable
4. Throttle cable spring

4. Check the cable at the carburetor (Fig. 7). There should be slight slack in the cable and it should not be pulling on the carburetor input lever (Fig. 7). If there is no slack in the cable, adjust the governor cable.



m-6164

**Figure 7**

1. Carburetor
2. Carburetor input lever
3. Governor cable with slight slack

5. Still holding the governor bracket counterclockwise, ensure that there is free-play at the throttle cable spring (the cable must not be pulling on the spring) (Fig. 6). If not, adjust the throttle cable.

**Note:** If you adjust the throttle cable, check the ground speed and adjust it as necessary. Refer to the *Service Manual* for instructions.

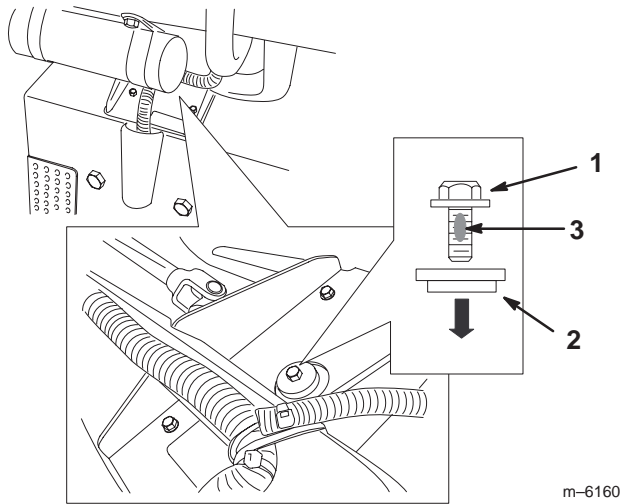
6. Install the security brackets using a new pop rivet (Fig. 2).

## Replacing the Steering Pitman Arm Retaining Bolt

1. Remove the existing retaining bolt and washer (located under the dash) and discard them (Fig. 8).
2. Install a new flange-head bolt with blue patch lock and a step washer with the step pointing down into the steering pitman arm (Fig. 8).

**Important** Never reuse a steering pitman arm retaining bolt once you have removed it.

3. Torque the bolt to 30 ft-lb (41 N·m).



**Figure 8**

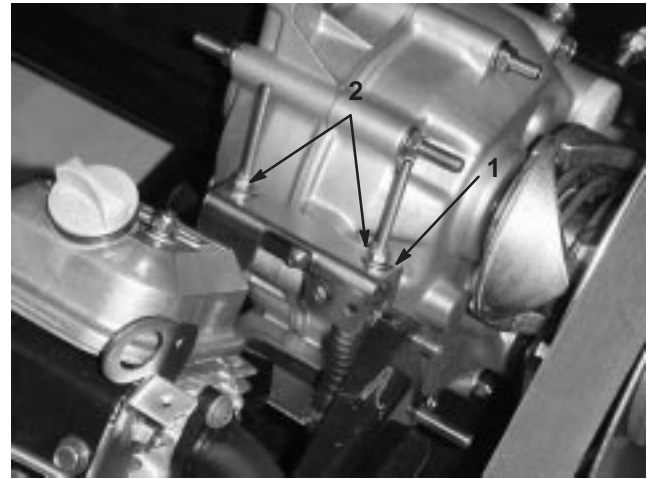
1. Flange-head bolt
2. Step washer
3. Blue patch lock

## Checking and Adjusting Neutral

If the vehicle has a neutral position on the shift lever, which controls the neutral in the transaxle, take the following steps to ensure that the neutral shift lever operates the transaxle neutral correctly:

1. Set the shift lever into the Neutral position.

2. Ensure that the neutral bracket is in the neutral position (level) by turning the drive clutch (Fig. 9). The vehicle should not roll back and forth. If it does, manually move the neutral bracket to the neutral position.



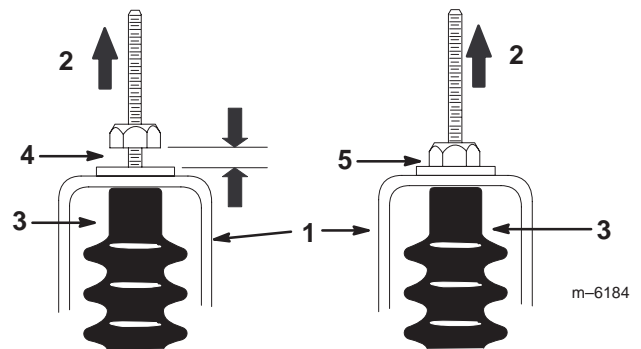
**Figure 9**

1. Neutral bracket
2. Locknuts

3. Tighten one of the locknuts (Fig. 9) just enough to take the slack out of the shift cable.

**Note:** You must hold the threaded shaft below the bracket to tighten the locknut on top.

4. Tighten the other locknut just enough to take the slack out of the other shift cable.
5. Pull up on each shift cable and ensure that there is no gap between the nut/washer and the neutral bracket (Fig. 10). If there is a gap, tighten the nut.



**Figure 10**

1. Neutral bracket
2. Pull up
3. Cable boot
4. Wrong, must tighten the nut
5. Correct adjustment

6. Start the engine and shift into Forward, Reverse, and Neutral several times to ensure that the neutral bracket is operating properly.

