



Count on it.

Form No. 3452-214 Rev C

Parts Catalog

Laser Level Installation Kit Field Pro 6040

Model No. 08865



Ordering Replacement Parts

To order replacement parts, please supply the part number, the quantity, and the description of each part desired.

Understanding Reference Numbers

Each identified part in an illustration has a reference number. The reference number for a part also appears in the parts list, along with other information about the part.

This catalog uses two special reference number formats, one to indicate parts in a service assembly and another to indicate the quantity of a given part in an illustration.

Service Assembly Reference Numbers

Parts in service assemblies have reference numbers in the form a:b. The a represents the reference number of the entire service assembly and the b represents a sequential number unique to each part within the service assembly.

For example, a wheel assembly might be identified by reference number 6, the tire by 6:1, the valve by 6:2, and the wheel by 6:3. When you order the assembly identified by reference number 6, you receive all parts identified by reference numbers 6:1, 6:2, and 6:3. However, you may also order any part individually. Reference numbers of this type appear in illustration and in parts lists.

Reference Numbers Indicating Quantity

In an illustration, if a reference number indicates more than one part, the reference number has the form nX y. The n represents the quantity of the part, the X is the multiplication symbol, and the y represents the reference number.

For example, in an illustration, the reference number 2X 37 means that two of the parts identified by reference number 37 are indicated.

Contents

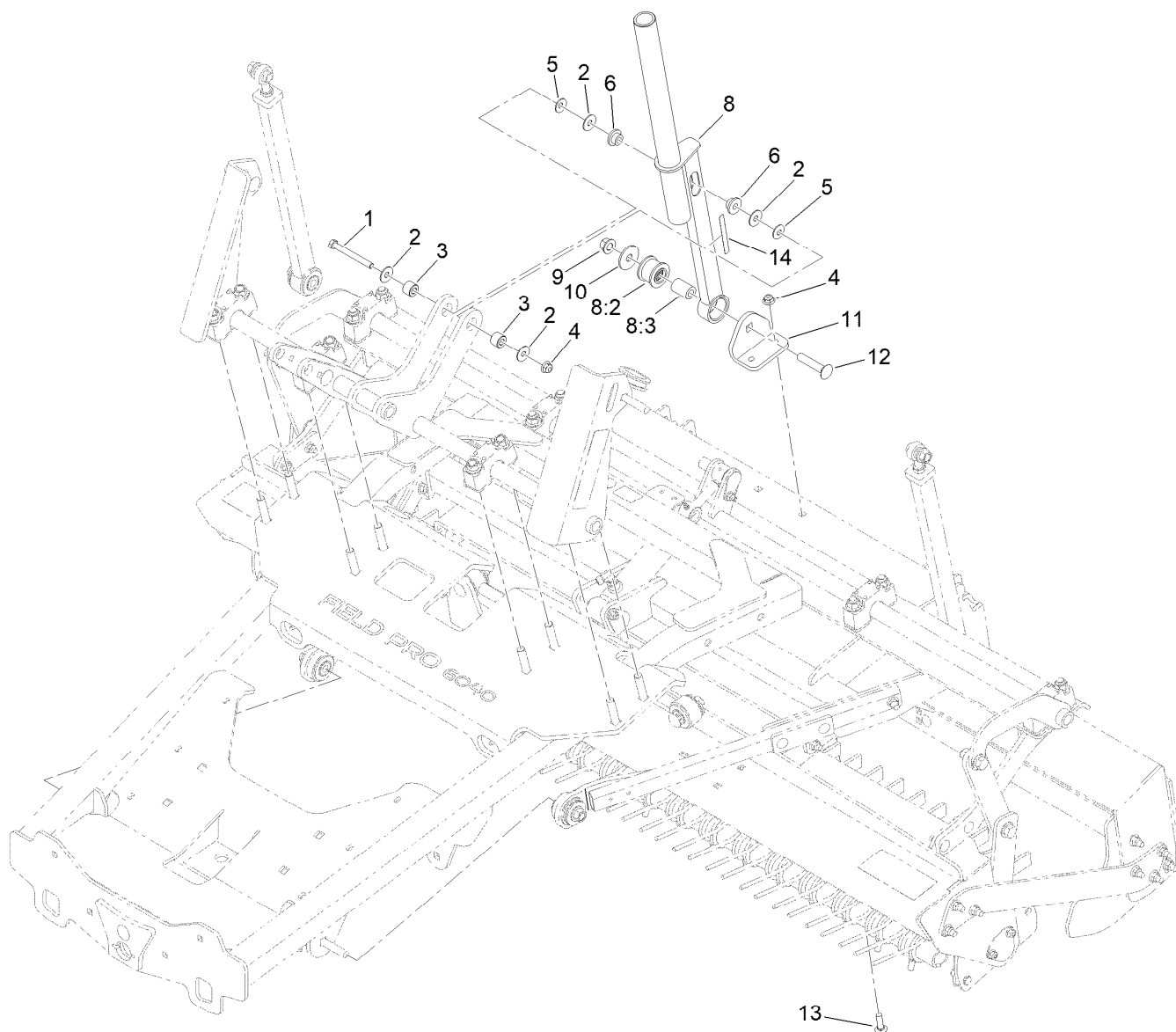
Receiver Mast Assembly..... 4

Hydraulic Assembly 5

Laser Level Control Manifold Assembly No. 144-7599 6

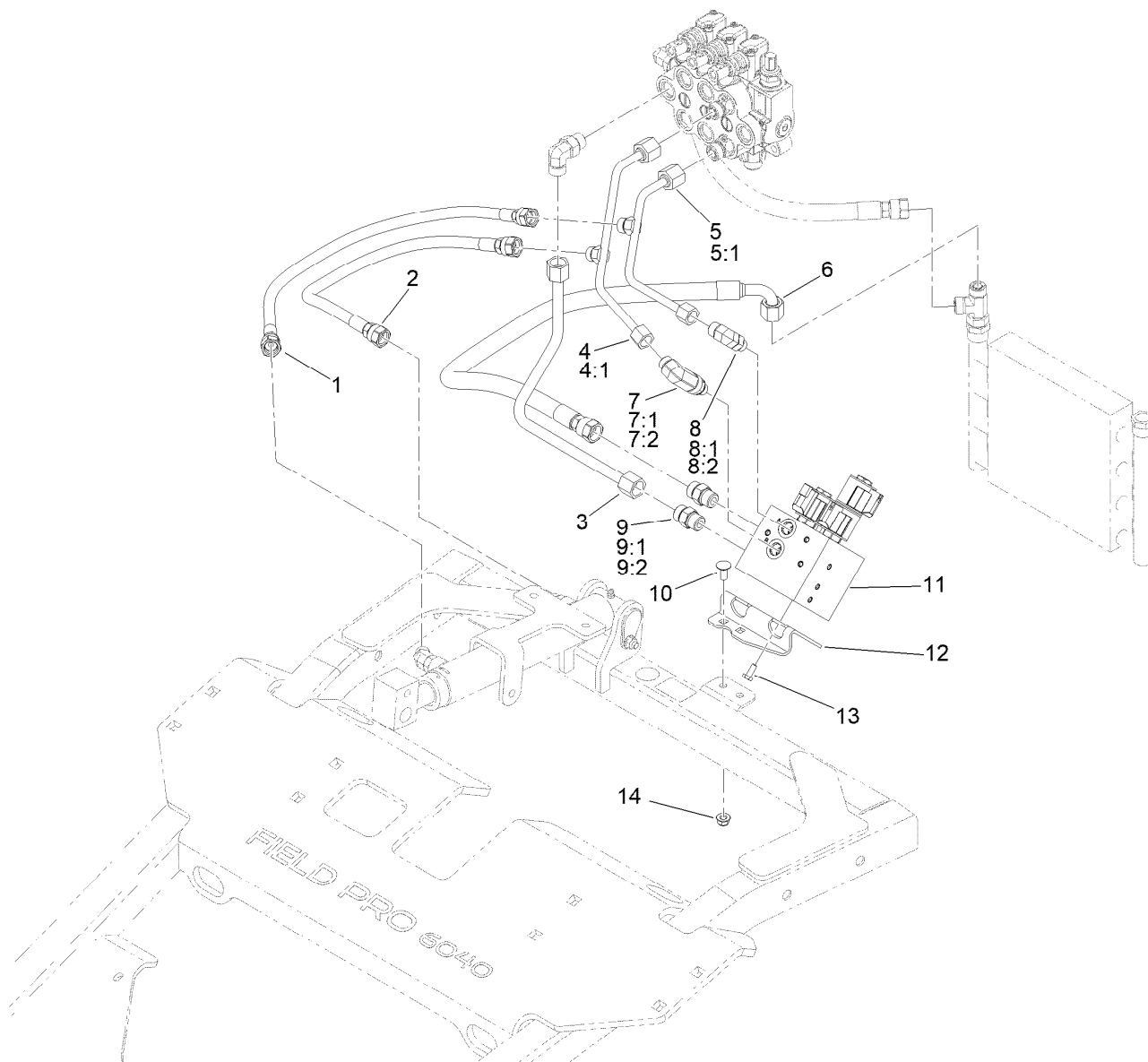
Laser Controller Mount Assembly 7

Operator Presence Assembly 8



Receiver Mast Assembly

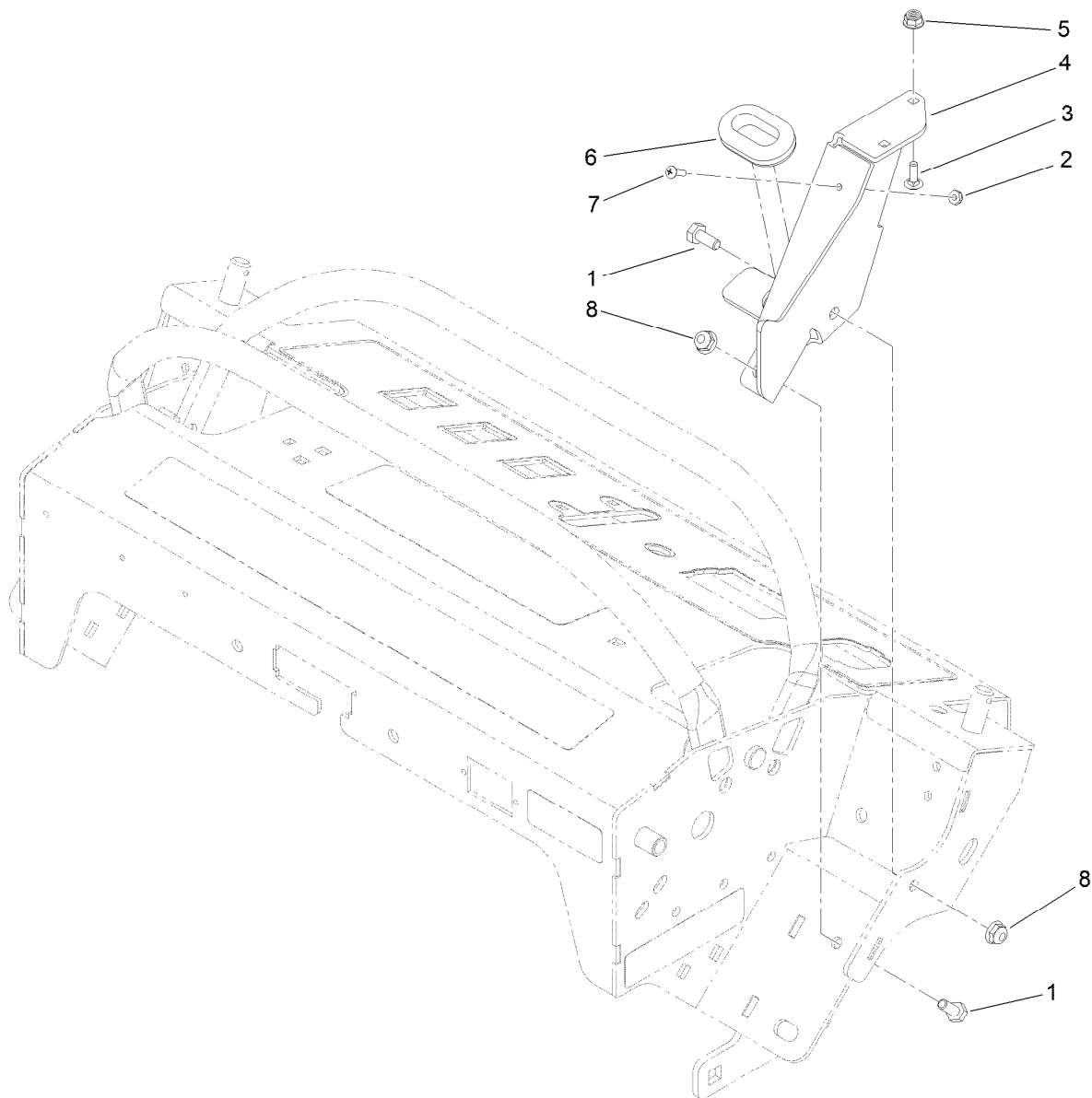
Ref.	Part Number	Qty.	Description
1	323-15	1	Screw-HH
2	119-4150	4	Washer-Flat
3	144-7316	2	Spacer
4	104-8301	3	Nut-HF, NI
5	3290-340	2	Washer-Belleville
6	133-6397	2	Bushing-Delrin
8	147-3304	1	Receiver Mast ASM
8:2	109-5009	1	Bushing-Suspension, Rubber
8:3	109-5010	1	Spacer
9	99-5107	1	Nut-Lock
10	86-1990	1	Washer-Thrust
11	144-7315-03	1	Mount-Support, Mast
12	3233-34	1	Screw-CARR
13	3231-28	2	Screw-CARR
14	133-8061	1	Decal-Warning



Hydraulic Assembly

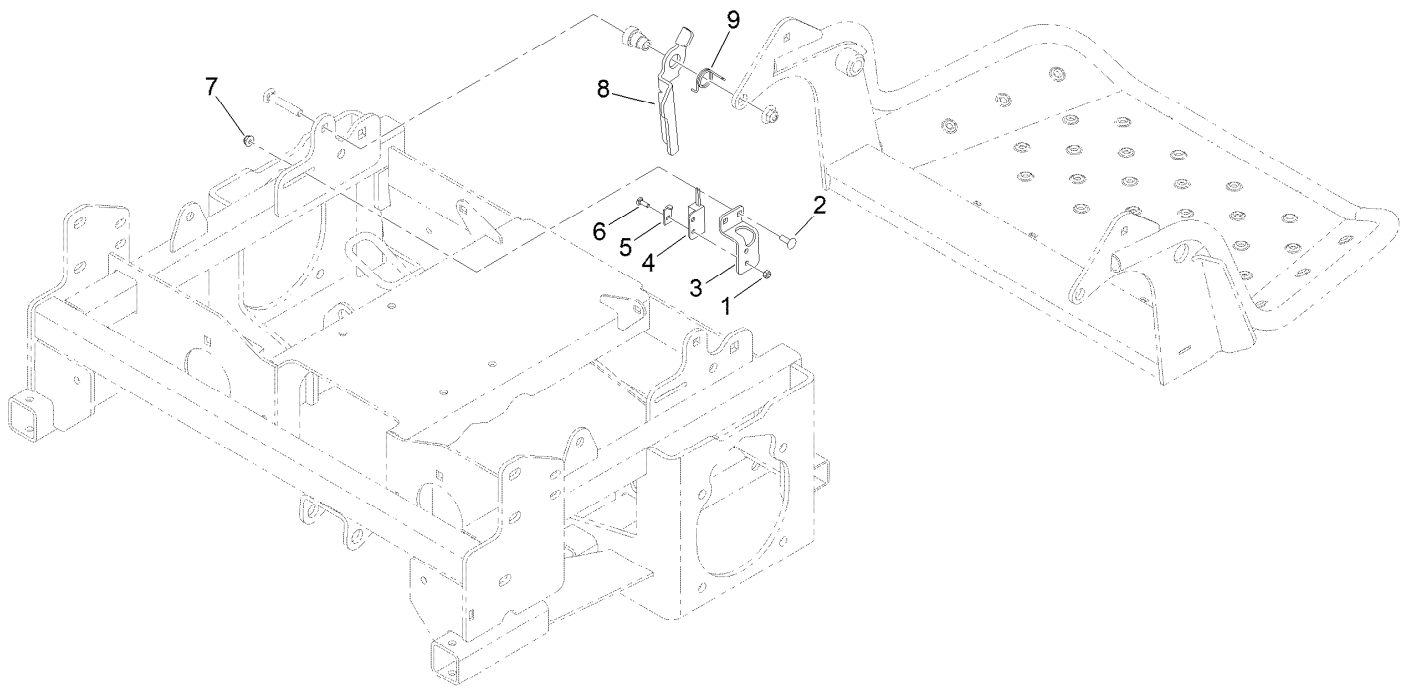
Ref.	Part Number	Qty.	Description
1	144-7277	1	Hydraulic Hose ASM
2	144-7278	1	Hydraulic Hose ASM
3	144-7271	1	Hydraulic Tube ASM
4	144-7273	1	Hydraulic Tube ASM
4:1	237-22	1	O-Ring
5	144-7272	1	Hydraulic Tube ASM
5:1	237-22	1	O-Ring
6	144-7283	1	Hydraulic Hose ASM
7	145-2645	1	Fitting-Elbow 90 Long
7:1	237-22	1	O-Ring
7:2	237-42	1	O-Ring

Ref.	Part Number	Qty.	Description
8	340-77	1	Fitting-Elbow, 90 DEG
8:1	237-22	1	O-Ring
8:2	237-42	1	O-Ring
9	340-4	2	Fitting-Straight
9:1	237-30	1	O-Ring
9:2	237-79	1	O-Ring
10	3230-23	2	Bolt-CARR
11	144-7599	1	Laser Level Control Manifold
12	144-7282-03	1	Bracket-Valve, Laser
13	137-3041	3	Screw-HH
14	104-8300	2	Nut-HF, NI



Laser Controller Mount Assembly

Ref.	Part Number	Qty.	Description
1	321-3	2	Screw-HH
2	3296-9	1	Nut-Hex
3	3229-34	2	Screw-CARR
4	144-7314-03	1	Mount-Controller, Laser
5	138-0719	2	Nut-HF
6	120-3265	1	Grommet
7	3249-3	1	Screw-PRH
8	104-7201	2	Nut-HF, NI



Operator Presence Assembly

Ref.	Part Number	Qty.	Description
1	3296-2	1	Nut-Lock, NI
2	1-807512	2	Bolt-CARR
3	147-3359	1	Bracket-Switch
4	100-1270	1	Switch-Proximity
5	100-4872	1	Plate-Switch, Neutral
6	3229-34	1	Screw-CARR
7	104-7201	2	Nut-HF, NI
8	147-3757-03	1	Bracket-Activator
9	139-1508	1	Spring-Torsion

Notes:

Notes:

Notes:



Count on it.