



84in Rear Discharge Kit

Groundsmaster® 3000

Model No. 93-4555

Parts Catalog

Ordering Replacement Parts

To order replacement parts, please supply: the part number, the quantity, and the description of each part desired.

Understanding Reference Numbers

Each identified part in an illustration has a reference number. The reference number for a part also appears in the parts list, along with other information about the part.

This catalog uses two special reference number formats, one to indicate parts in a service assembly and another to indicate the quantity of a given part in an illustration.

Service Assembly Reference Numbers

Parts in service assemblies have reference numbers in the form **a:b**. The **a** represents the reference number of the entire service assembly and the **b** represents a sequential number unique to each part within the service assembly.

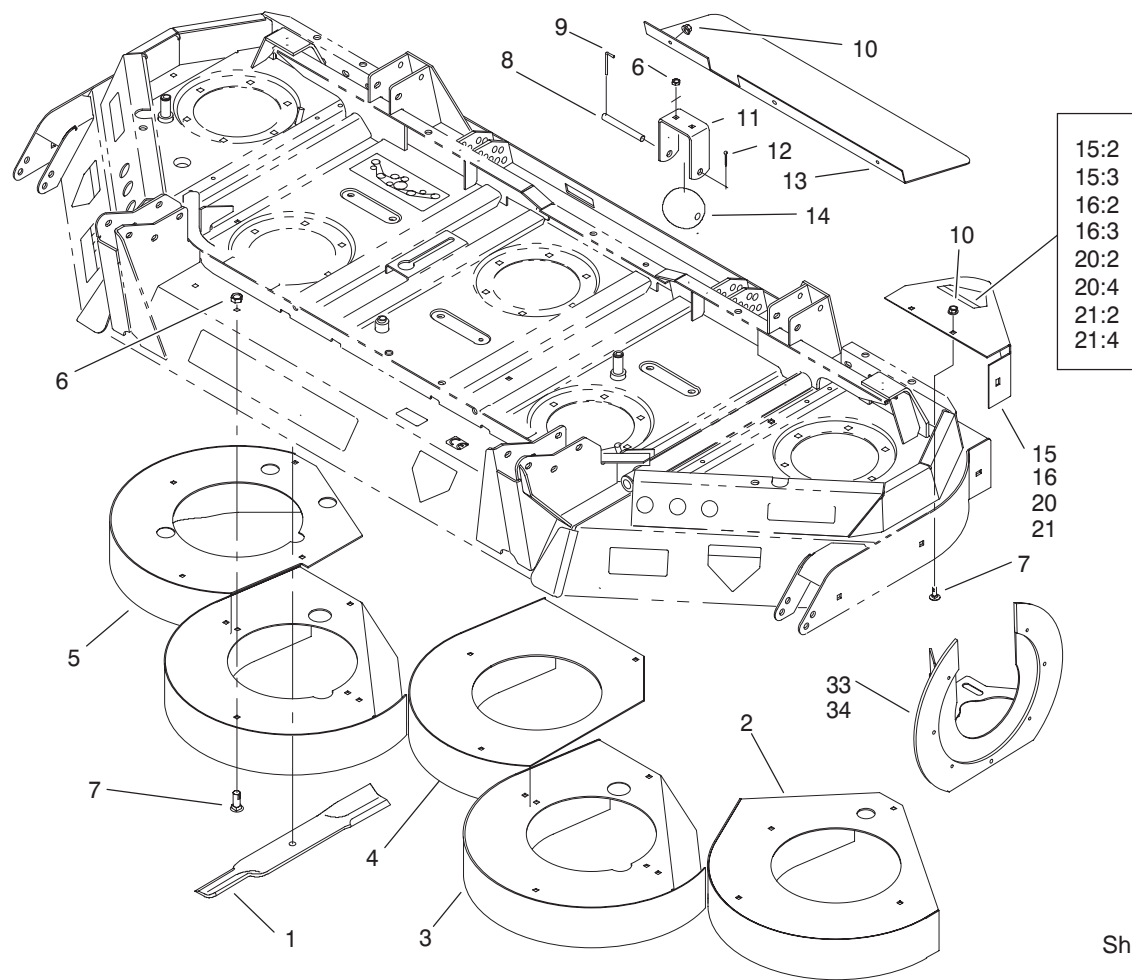
For example, a wheel assembly might be identified by reference number **6**, the tire by **6:1**, the valve by **6:2**, and the wheel by **6:3**. When you order the assembly identified by reference number **6**, you receive all parts identified by reference numbers **6:1**, **6:2**, and **6:3**. However, you may also order any part individually.

Reference numbers of this type appear in illustrations and in part lists.

Reference Numbers Indicating Quantity

In an illustration, if a reference number indicates more than one part, the reference number has the form **nX y**. The **n** represents the quantity of the part, the **X** is the multiplication symbol, and the **y** represents the reference number.

For example, in an illustration, the reference number **2X 37** means that two of the parts identified by reference number **37** are indicated.



Sheet No.:0

Rear Discharge Assembly

Ref. No.	Part No.	Qty.	Description
1	86-0010-03	5	Blade
2	95-6232-01	1	Chamber-LH
3	95-6204-01	2	Chamber-Front
4	95-6205-01	1	Chamber
5	95-6233-01	1	Chamber-RH
6	33024-00	22	Nut-Lock
7	33124-020	28	Screw-CARR
8	57-0680	1	Shaft-Roller
9	57-0690	1	Pin-Special
10	33004-00	6	Nut-HF
11	95-6236-01	1	Bracket-Roller
12	3272-11	1	Pin-Cotter
13	95-6224-01	1	Deflector-Rear
14	29-4820	1	Roller
15	95-6241	1	RH Deflector ASM
15:2	43-8480	1	Decal-Danger
15:3	93-7815	1	Decal-Danger, Int'l
16	95-6242	1	LH Deflector ASM
16:2	43-8480	1	Decal-Danger
16:3	93-7815	1	Decal-Danger, Int'l
20	93-4616	1	LH Deflector ASM
20:2	43-8480	1	Decal-Danger
20:4	93-7815	1	Decal-Danger, Int'l
21	93-4614	1	RH Deflector ASM
21:2	43-8480	1	Decal-Danger
21:4	93-7815	1	Decal-Danger, Int'l

Ref. No.	Part No.	Qty.	Description
33	104-0140	1	LH Shield ASM
34	104-0141	1	RH Shield ASM