



3WD Kit

Reelmaster® 3105-D or Groundsmaster® 3505-D Traction Unit

Model No. 03229

Installation Instructions

Preparing the Machine

1. Park the machine on a level surface.
2. Disengage the PTO (if equipped) and lower the cutting units.
3. Engage the parking brake.
4. Shut off the engine and remove the key.
5. Wait for all movement to stop and allow the machine to cool.



WARNING



Hot hydraulic fluid can cause severe burns.

Allow the hydraulic fluid to cool before performing any maintenance to the hydraulic system.

6. Relieve all pressure from the hydraulic system; refer to the *Service Manual* for your machine.



DANGER



Hydraulic fluid escaping under pressure can penetrate the skin and cause injury.

- Ensure that all hydraulic fluid hoses and lines are in good condition and that all hydraulic connections and fittings are tight before applying pressure to the hydraulic system.
- Keep your body and hands away from pinhole leaks or nozzles that eject high-pressure hydraulic fluid.
- Use cardboard or paper to find hydraulic leaks.
- Safely relieve all pressure in the hydraulic system before performing any work on the hydraulic system.
- Get immediate medical help if fluid is injected into the skin.

7. Remove the hood from the machine; refer to the *Operator's Manual* for your machine.

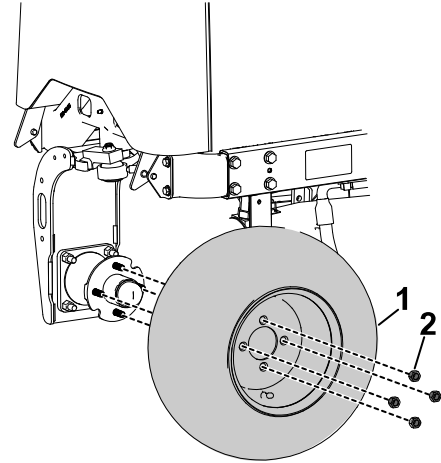


Lifting the Back of the Machine

Lift the back of the machine; refer to the *Operator's Manual* or *Service Manual* for your machine.

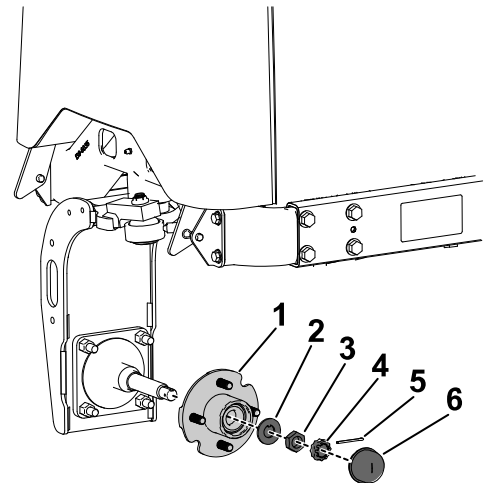
Removing the Rear Wheel and Hub Assembly

1. Remove and discard the 4 lug nuts (2) that secure the wheel (1) to the wheel-hub assembly and remove the wheel from the machine.



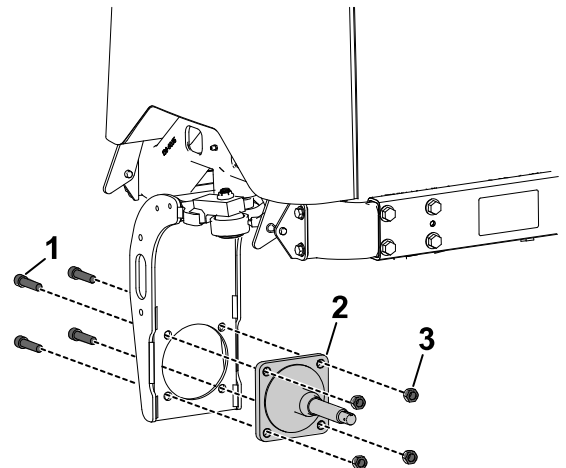
G494218

2. Remove and discard the dust cap (6), cotter pin (5), nut retainer (4), jam nut (3), tab washer (2), and wheel hub (1).



G494230

3. Remove and discard the spindle (2) and corresponding mounting bolts (1) and nuts (3).



G494250

Installing the Hydraulic Motor, Hub, and Rear Wheel

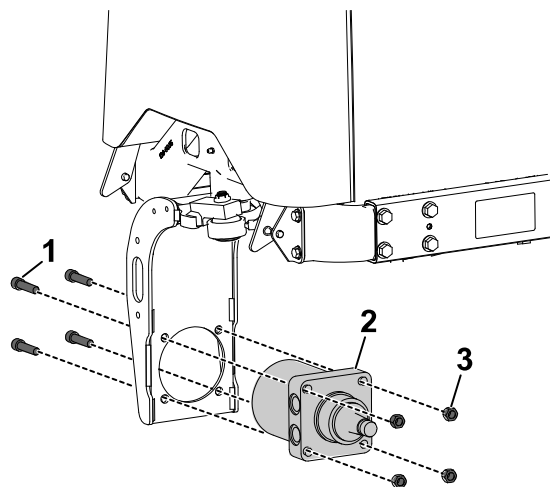
Parts Required

1	Hydraulic-motor assembly
2	Hydraulic fitting
4	Bolt (1/2 x 2-3/4 inches)
4	Locknut (1/2 inch)
1	Wheel-hub assembly
4	Lug nut
1	Locknut (1-1/2 inches)

1. Secure the hydraulic-motor assembly ② to the steering fork with 4 bolts (1/2 x 2-3/4 inches) ① and 4 locknuts (1/2 inch) ③.



2. While holding the bolts with a backing wrench, torque the locknuts to **70 to 84 N·m (52 to 62 ft-lb)**.

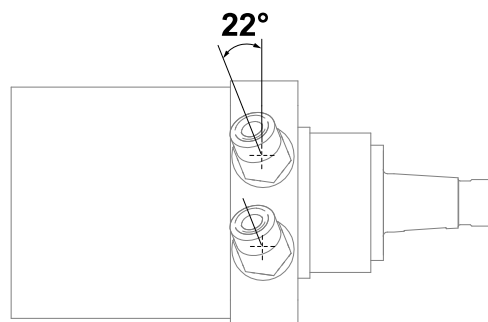


G495906

3. Lubricate the o-rings on the fittings with a light coating of oil.

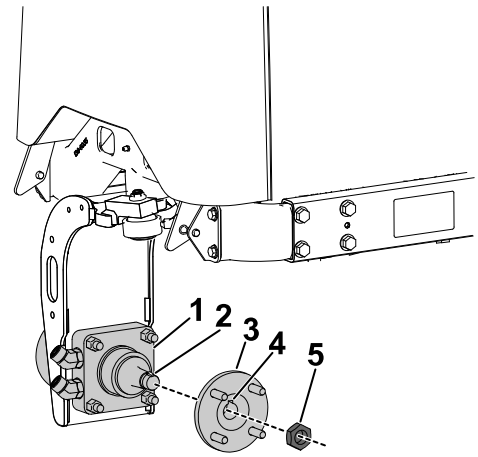


4. Install the 2 hydraulic fittings on the hydraulic-motor assembly. Orient the fittings as shown. Torque the fittings **134 to 164 N·m (99 to 121 ft-lb)**. Use a backing wrench to retain proper orientation of the fittings while torquing them.

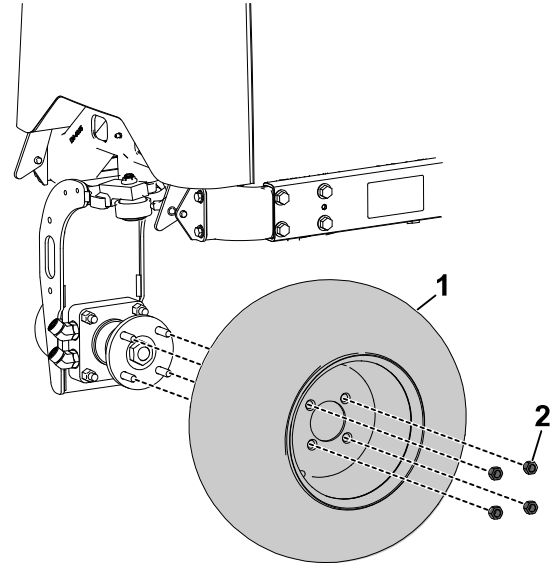


G495907

5. Slide the wheel hub (3) on the hydraulic-motor assembly (1). Ensure that the groove (4) in the hub is aligned with the key (2) on the motor.
6. Install the hub locknut (1-1/2 inches) (5) until it is lightly seated against the hub.



7. Install the previously removed rear wheel assembly (1) to the wheel hub by lightly seating the 4 lug nuts (2) against the wheel.
8. Lower the machine to the ground. Chock on the back tire to prevent the machine from rolling.



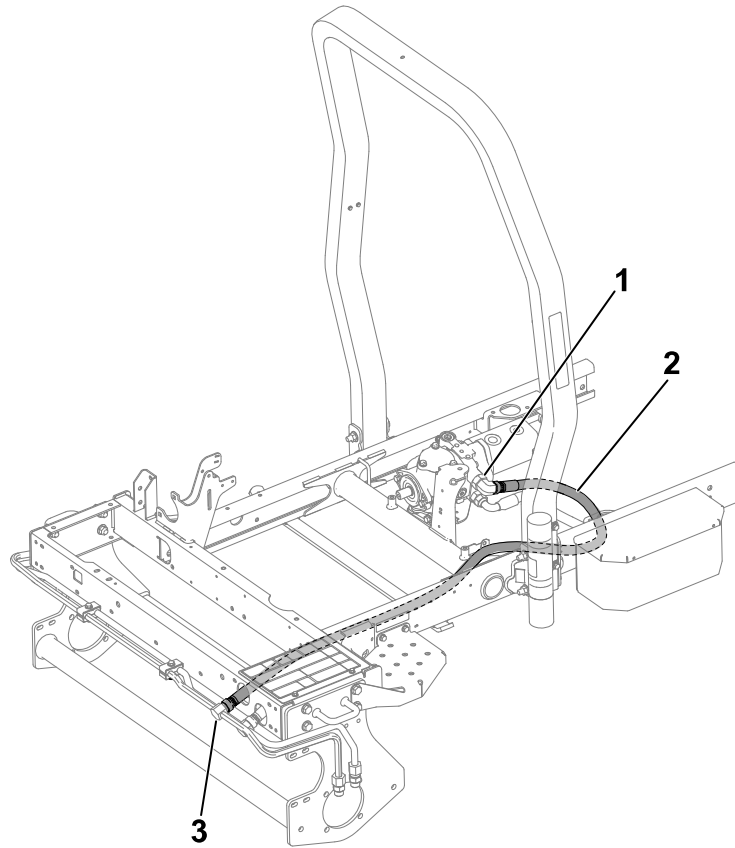
9. Torque the lug nuts in a crossing pattern to **61 to 88 N·m (45 to 65 ft-lb)**.



10. Torque the hub locknut (1-1/2 inches) to **339 to 373 N·m (250 to 275 ft-lb)**.

Removing the Hydraulic Hose

Remove and discard the existing upper hydraulic hose (2) routed between the piston pump (1) and the upper front hydraulic tube (3).



G494354

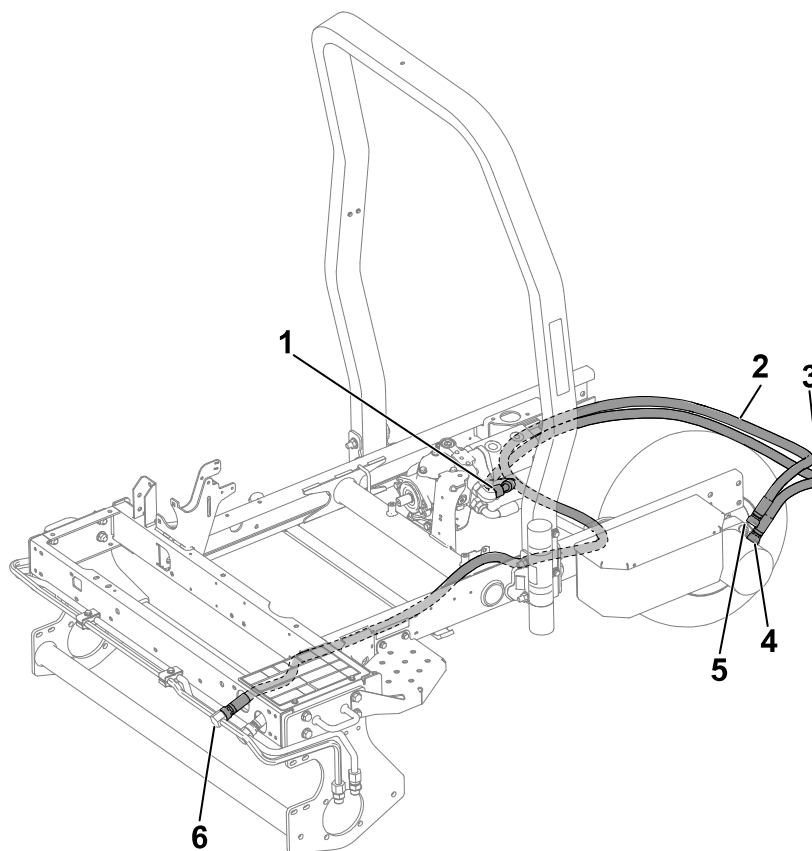
Installing the Hydraulic Hoses

Parts Required

1	Hydraulic hose (70 inches)
1	Hydraulic hose (129 inches)
2	Clamp
1	Clamp case
2	Bolt (5/16 x 2-3/4 inches)
2	Locknut (5/16 inch)
6	Cable tie

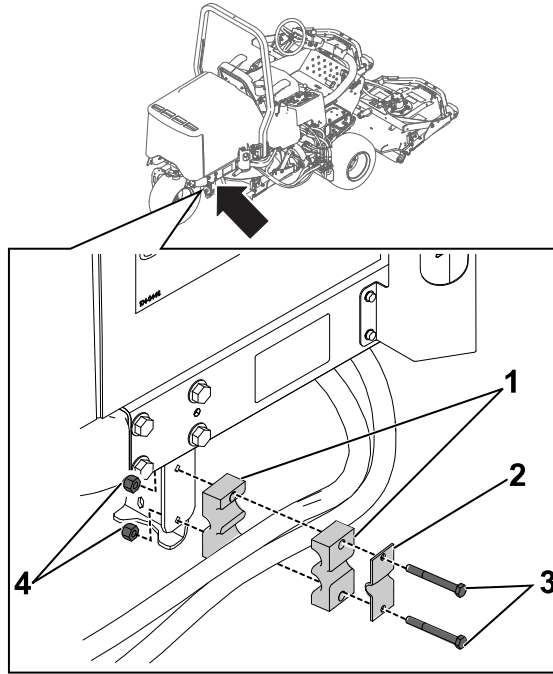
Note: Before installing any hydraulic hoses, ensure that the correct O-rings are in position and lubricated with hydraulic fluid.

1. Connect the straight end of the hydraulic hose (70 inches) ③ to the lower hydraulic fitting ④ on the hydraulic-motor assembly. Route the other end of the hose to the piston pump ① and connect it to the open fitting on the pump.
2. Connect one end of the hydraulic hose (129 inches) ② to the upper fitting ⑤ on the hydraulic-motor assembly. Route the other end of the hose to the upper front hydraulic tube ⑥ and connect it to the open fitting on the tube.



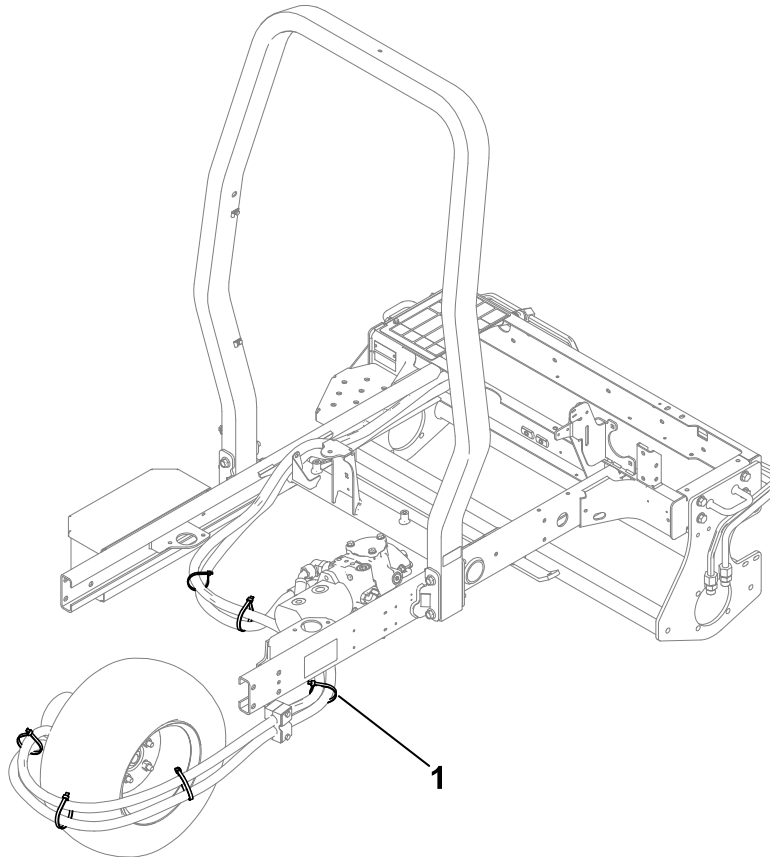
G494581

3. On the rear frame tab on the machine, install the 2 hose clamps (1) and clamp case (2) using 2 bolts (5/16 x 2-3/4 inches) (3) and 2 locknuts (5/16 inch) (4). Ensure that the hydraulic hoses are routed between the hose clamps as shown.



G494604

4. Secure the hydraulic hoses with 6 cables ties (1). Refer to the following figure for the appropriate cable tie locations.



G494633

