



Dislodger Kit Log Splitter Model No. 161-2310

3463-290A

Installation Instructions

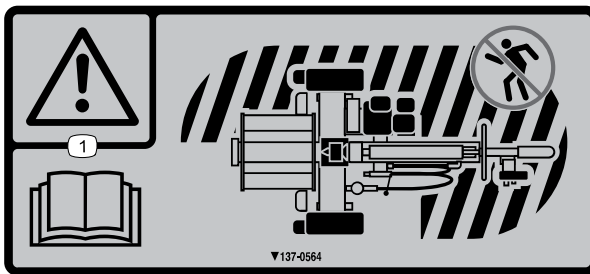
Safety

Safety and Instructional Decals



Safety decals and instructions are easily visible to the operator and are located near any area of potential danger. Replace any decal that is damaged or missing.

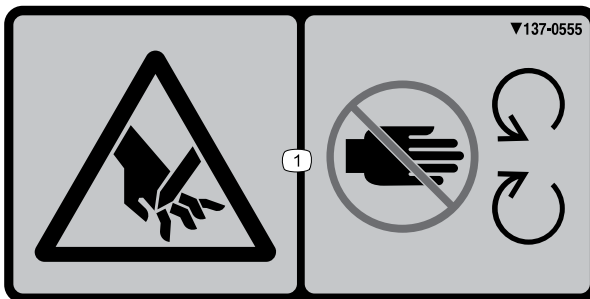
Decal Part: 137-0564



s_dec137-0564

① Warning—read the *Operator's Manual*; keep away from the area shown while in operation.

Decal Part: 137-0555



s_dec137-0555

① Cutting hazard—keep away from moving parts.

Installation

Preparing the Machine

1. Park the machine on a level surface. Chock or block the wheels.
2. Start the engine and extend the wedge out all the way.



3. Shut off the engine.
4. Disconnect the spark-plug wire.

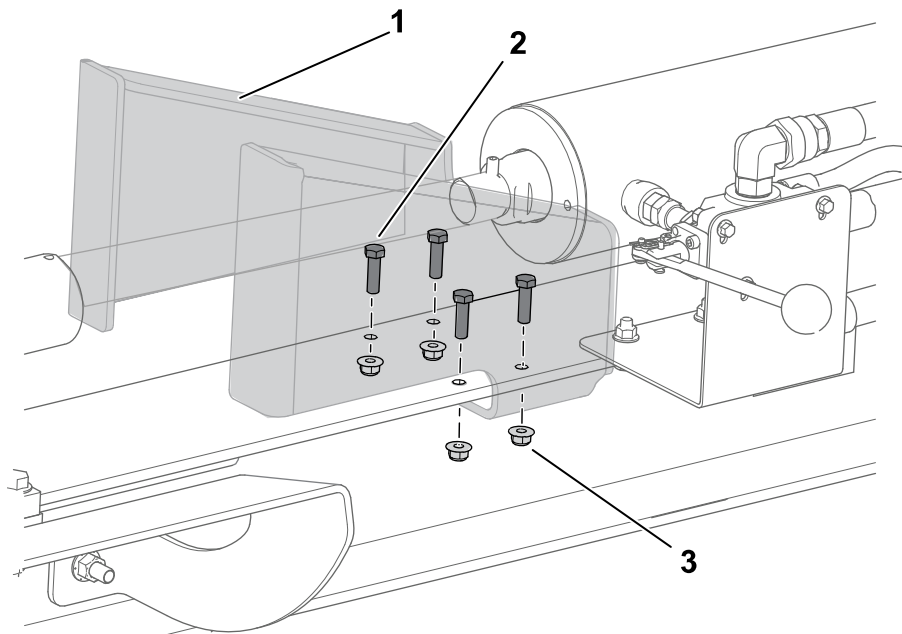
Installing the Kit

Note: Retain all parts unless indicated otherwise.

Parts Required

1	Dislodger bracket
1	Valve bracket
1	Decal 137-0555
1	Decal 137-0564

1. Remove the dislodger bracket.

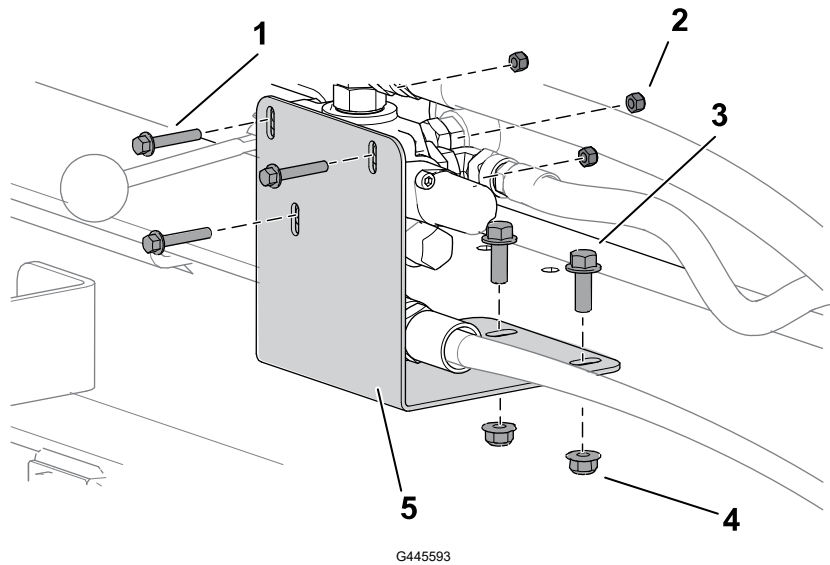


G444930

- ① Dislodger bracket
② Bolt—3/8 x 1-1/4 inch (4)

- ③ Nut—3/8 inch (4)

2. Remove the valve bracket. Discard the nuts (3/8 inch).



① Bolt—1/4 x 1-1/2 inch (3)

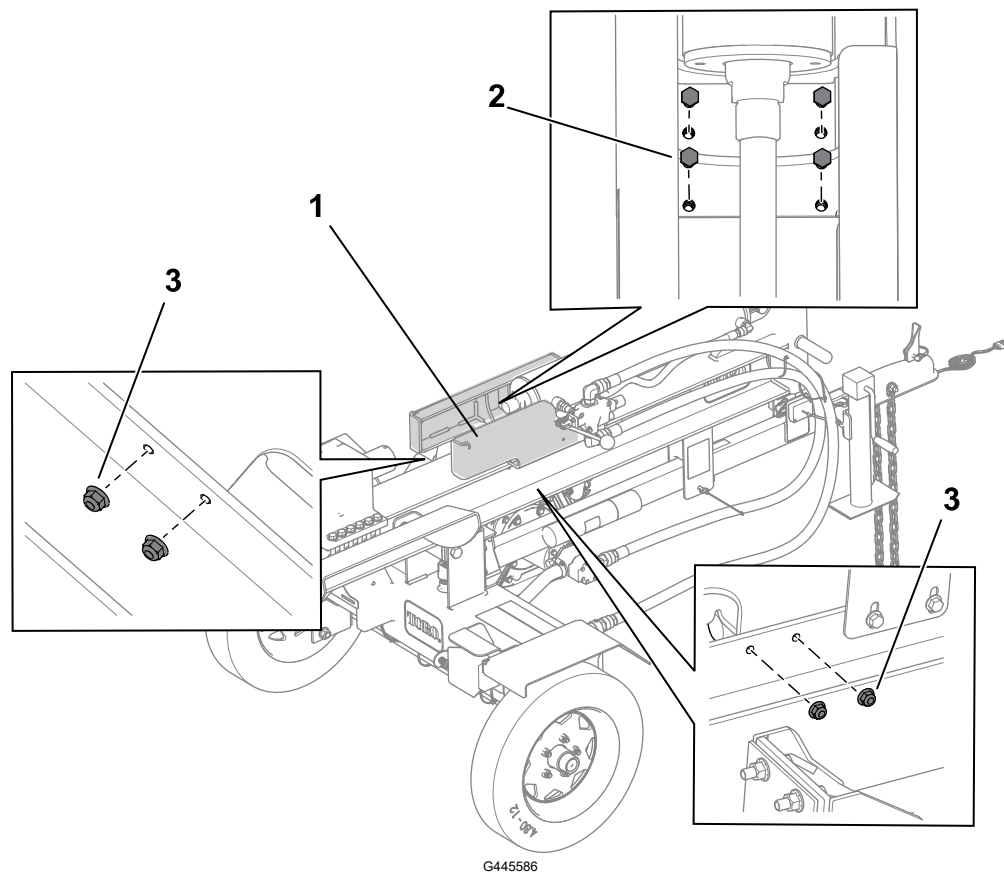
② Nut—1/4 inch (3)

③ Bolt—3/8 x 1 inch (2)

④ Nut—3/8 inch (2)

⑤ Valve bracket

3. Install the new dislodger using the nuts and bolts removed from the original dislodger.

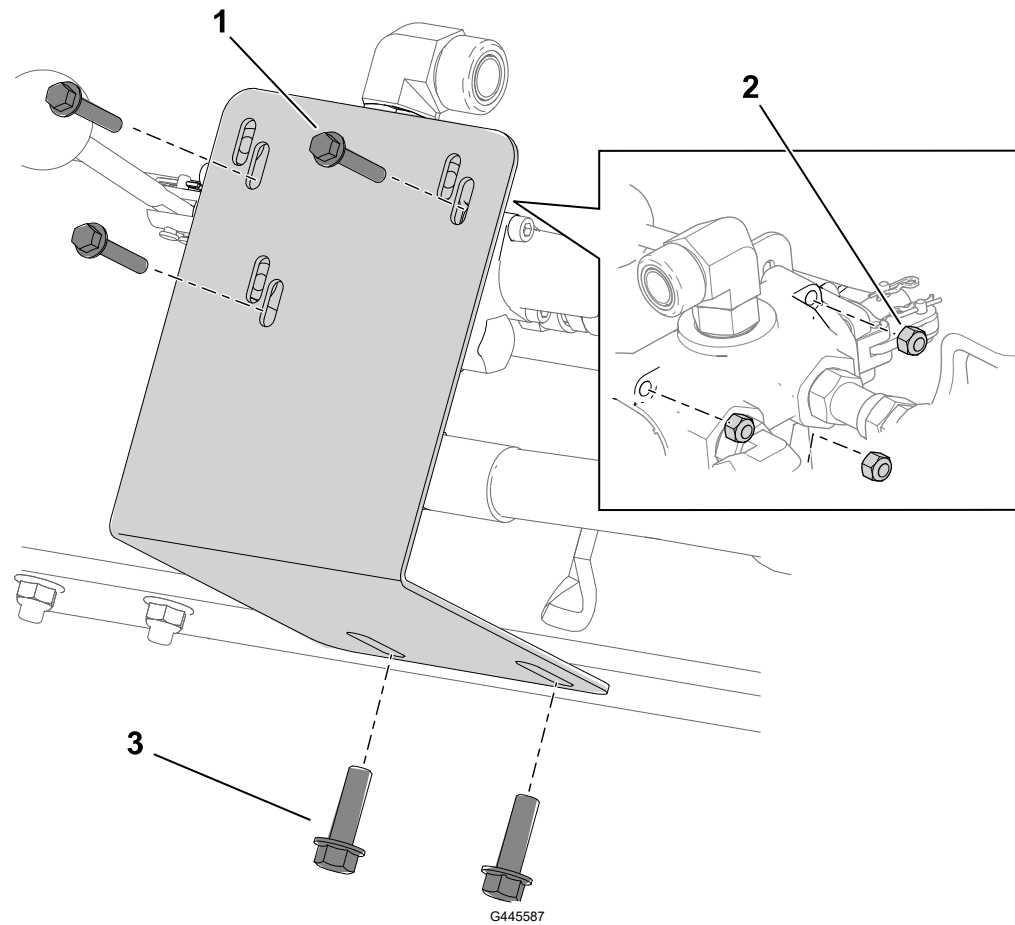


① Dislodger bracket

② Bolt—3/8 x 1-1/4 inch (4)

③ Nut—3/8 inch (4)

4. Install decal 137-0555 on the left side of the dislodger.
5. Install decal 137-0564 on the right side of the dislodger.
6. Install the new valve bracket underneath the top of the central beam using the bolts and nuts removed from the original valve bracket.



① Bolt—1/4 x 1-1/2 inch (3)

② Nut—1/4 inch (3)

③ Bolt—3/8 x 1 inch (2)