



## Full Area Flatbed Side Kit Heavy-Duty Workman® Utility Vehicle

Model No. 07302 - 260000001 and up.

### Parts Catalog

#### Ordering Replacement Parts

To order replacement parts, please supply the part number, the quantity, and the description of each part desired.

#### Understanding Reference Numbers

Each Identified part in an illustration has a reference number. The reference number for a part also appears in the parts list, along with other information about the part.

This catalog uses two special reference number formats, one to indicate parts in a service assembly and another to indicate the quantity of a given part in an illustration.

#### Service Assembly Reference Numbers

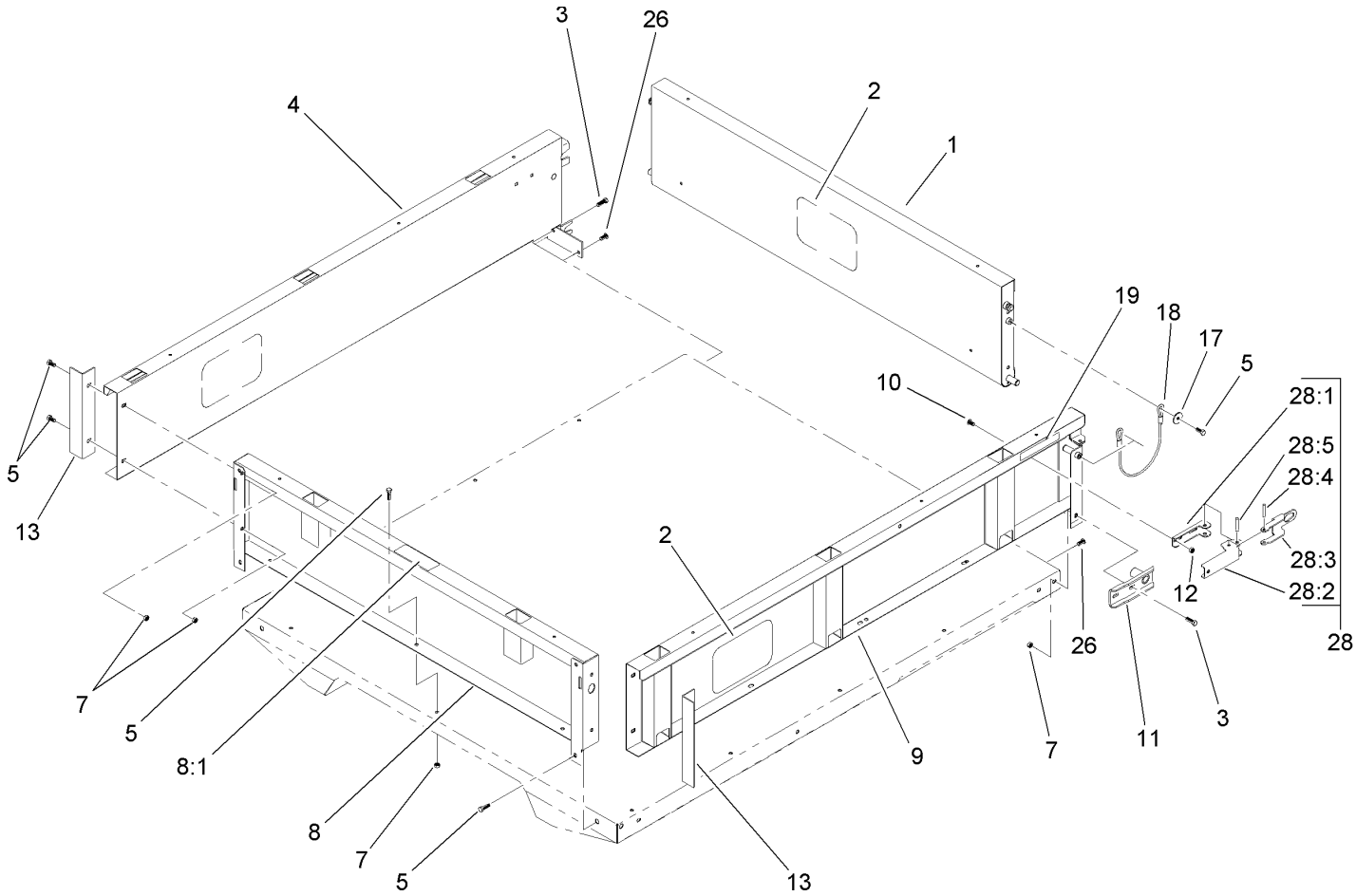
Parts in service assemblies have reference numbers in the form a:b. The a represents the reference number of the entire service assembly and the b represents a sequential number unique to each part within the service assembly.

For example, a wheel assembly might be identified by reference number 6, the tire by 6:1, the valve by 6:2, and the wheel by 6:3. When you order the assembly identified by reference number 6, you receive all parts identified by reference numbers 6:1, 6:2, and 6:3. However, you may also order any part individually. Reference numbers of this type appear in illustrations and in part lists.

#### Reference Numbers Indicating Quantity

In an illustration, if a reference number indicates more than one part, the reference number has the form nX y. The n represents the quantity of the part, the X is the multiplication symbol, and the y represents the reference number.

For example, in an illustration, the reference number 2X 37 means that two of the parts identified by reference number 37 are indicated.



## Full Area Flatbed Side Kit Assembly

Ref	Part No.	Qty.	Description				
1	92-1259-03	1	Tailgate-Rear				
2	105-4222	3	Decal				
3	3234-29	6	Screw-HHF				
4	92-1255-03	1	RH Side Panel ASM				
5	3234-7	21	Screw-HHF				
7	32128-35	23	Nut-HF				
8	92-5982	1	Front Panel ASM				
8:1	93-6689	1	Decal-No Riders				
9	92-1248-03	1	LH Side Panel ASM				
10	3230-15	4	Screw-CARR				
11	92-1265-03	2	Bracket-Pivot				
12	32128-20	4	Nut-HF				
13	92-1320-03	2	Angle-Side				
17	3256-57	4	Washer-Flat				
18	93-9595	2	Lanyard				
19	93-9868	2	Decal-Caution				
26	3230-1	2	Bolt-CARR				
28	99-1123	2	Latch ASM				
28:1	92-1271	1	Pivot-Latch				
28:2	99-1113	1	Handle-Latch				
28:3	99-1112	1	Plate-Retainer				
28:4	32121-78	1	Pin-Roll				
28:5	32121-25	1	Pin-Roll				