



2/3 Area Flatbed Side Kit for Workman® 3000 Series Model No. 07322—2300000001 and Up

Parts Catalog

Ordering Replacement Parts

To order replacement parts, please supply: the part number, the quantity, and the description of each part desired.

Understanding Reference Numbers

Each identified part in an illustration has a reference number. The reference number for a part also appears in the parts list, along with other information about the part.

This catalog uses two special reference number formats, one to indicate parts in a service assembly and another to indicate the quantity of a given part in an illustration.

Service Assembly Reference Numbers

Parts in service assemblies have reference numbers in the form **a:b**. The **a** represents the reference number of the entire service assembly and the **b** represents a sequential number unique to each part within the service assembly.

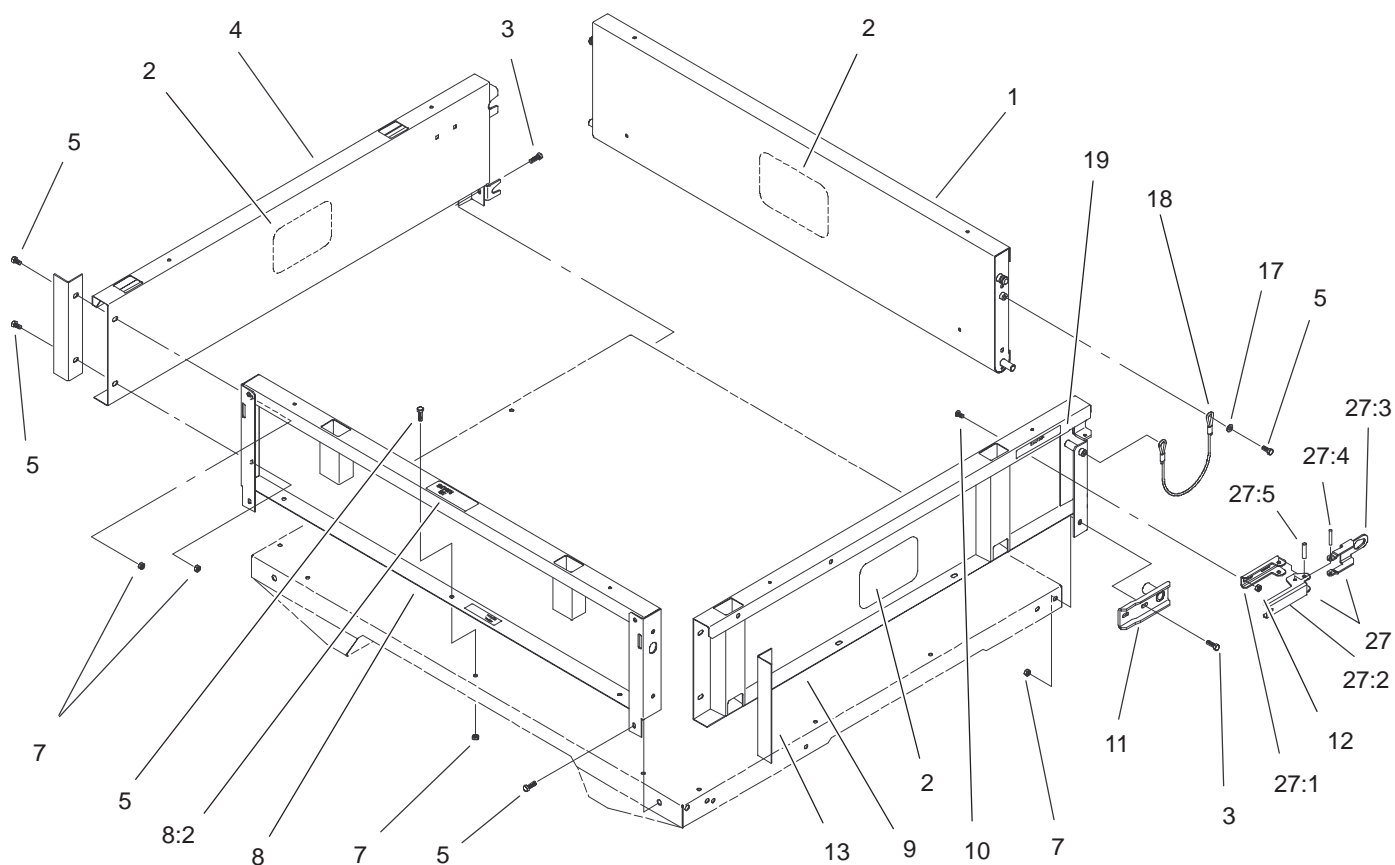
For example, a wheel assembly might be identified by reference number **6**, the tire by **6:1**, the valve by **6:2**, and the wheel by **6:3**. When you order the assembly identified by reference number **6**, you receive all parts identified by reference numbers **6:1**, **6:2**, and **6:3**. However, you may also order any part individually.

Reference numbers of this type appear in illustrations and in part lists.

Reference Numbers Indicating Quantity

In an illustration, if a reference number indicates more than one part, the reference number has the form **nX y**. The **n** represents the quantity of the part, the **X** is the multiplication symbol, and the **y** represents the reference number.

For example, in an illustration, the reference number **2X 37** means that two of the parts identified by reference number **37** are indicated.



Sheet No.:1

2/3 Area Flatbed Side Assembly

Ref. No.	Part No.	Qty.	Description
1	92-1259-03	1	Tailgate-Rear
2	105-4222	3	Decal-Toro Logo
3	3234-29	6	Screw-HHF
4	92-1276-03	1	Panel-Side, RH
5	3234-7	19	Screw-HHF
7	32128-35	19	Nut-HF
8	92-5982	1	Panel-Front
8:2	93-6689	1	Decal-No Riders
9	92-1274-03	1	Panel-Side, LH
10	3230-15	4	Screw-CARR
11	92-1265-03	2	Bracket-Pivot
12	32128-20	4	Nut-HF
13	92-1320-03	2	Angle-Side
17	3256-57	4	Washer-Flat
18	93-9595	2	Lanyard
19	93-9868	2	Decal-Caution
27	99-1123	2	Latch ASM
27:1	92-1271	1	Pivot-Latch
27:2	99-1113	1	Handle-Latch
27:3	99-1112	1	Plate-Retainer
27:4	32121-78	1	Pin-Roll
27:5	32121-25	1	Pin-Roll

Ref. No.	Part No.	Qty.	Description