



LED Flashing Beacon Kit

ProLine H600 Rotary Mower

Model No. 31047

Installation Instructions

Installation

Loose Parts

Use the chart below to verify that all parts have been shipped.

Procedure	Description	Qty.	Use
1	No parts required	–	Prepare for installation.
2	Beacon light Beacon wire harness Beacon rod Electric connector Bolt Small plate Nut Union fitting U-bolt Washer Bolt Belleville washer Washer Nut Support bracket Rubber plug Rocker switch Beacon switch	1 1 1 1 2 1 4 1 1 1 4 1 2 2 2 2 1 1 1	Install the beacon.
3	Wire harness Cable ties	1 8	Install the wire harness.

1

Preparing for Installation

No Parts Required

Procedure

Note: Retain all removed parts for later installation unless otherwise noted.

1. Park the machine on a level surface, lower the attachment, shut off the engine, engage the parking brake, and remove the key.



2. Disconnect the negative (-) battery cable from the battery; refer to the electrical system maintenance section of the traction unit *Operator's Manual*.

2

Installing the Beacon

Parts needed for this procedure:

1	Beacon light
1	Beacon wire harness
1	Beacon rod
1	Electric connector
2	Bolt
1	Small plate
4	Nut
1	Union fitting
1	U-bolt
4	Washer
1	Bolt
2	Belleville washer
2	Washer
2	Nut
2	Support bracket
1	Rubber plug
1	Rocker switch
1	Beacon switch

Procedure

1. Install the support bracket to the right side of the rollbar using the U-bolt, 2 washers, and 2 nuts.

Note: The top surface of the bracket should be approximately 180 mm (7-3/32 inches) from the front of the rollbar.

2. Install the support bracket to the install support bracket with a screw, 2 washers, 2 Belleville washers, and a nut ([Figure 1](#)).

Note: Refer to [Figure 1](#) for the support bracket orientation.

3. Assemble the beacon light with the electric connector, rubber plug, beacon rod, and the union fitting ([Figure 1](#)).
4. Install the beacon-light assembly to the support bracket with 2 bolts, the small plate, 2 washers, and 2 nuts ([Figure 1](#)).

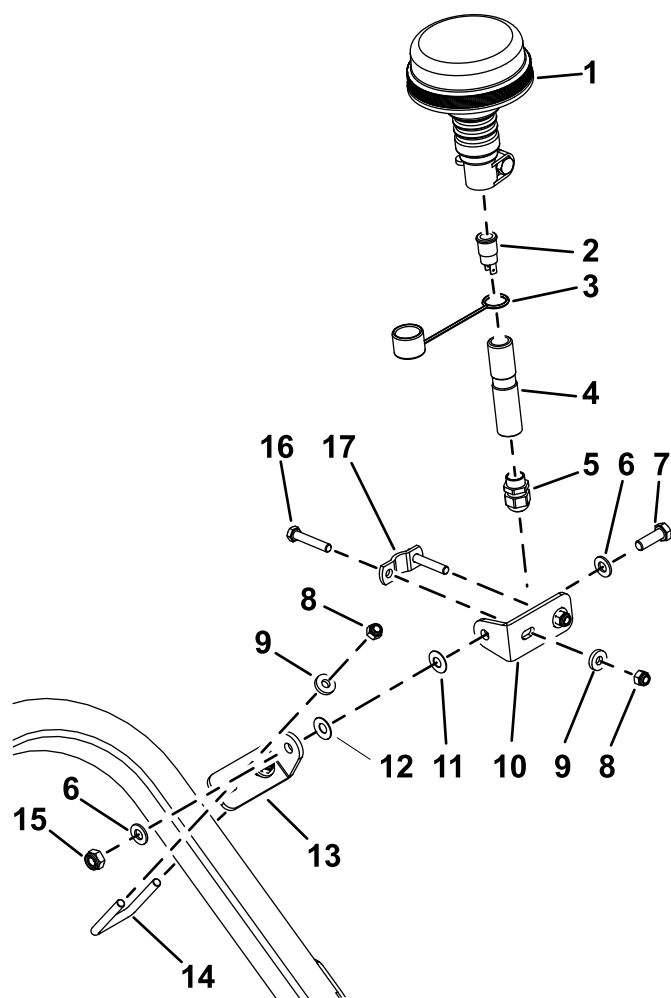
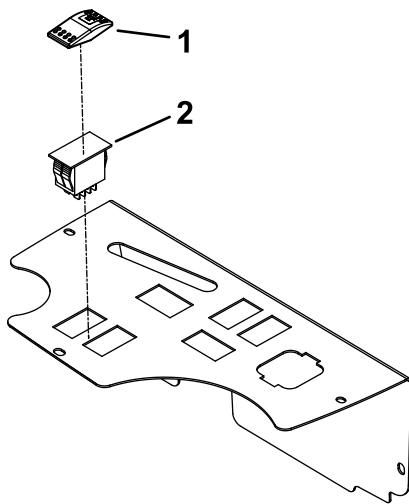


Figure 1

- | | |
|-----------------------|-----------------------|
| 1. Beacon light | 10. Support bracket |
| 2. Electric connector | 11. Washer |
| 3. Rubber plug | 12. Belleville washer |
| 4. Beacon rod | 13. Support bracket |
| 5. Union fitting | 14. U-bolt |
| 6. Washer | 15. Nut |
| 7. Bolt | 16. Bolt |
| 8. Nut | 17. Small plate |
| 9. Washer | |

5. Install the beacon switch and rocker switch (Figure 2).



g466834

Figure 2

1. Rocker switch
2. Beacon switch

3

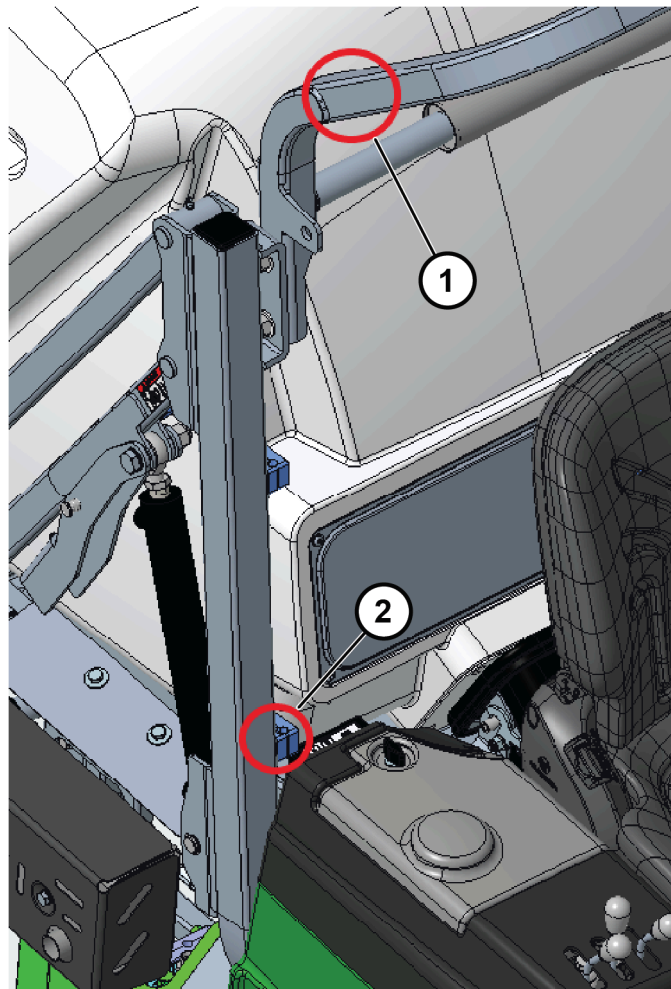
Installing the Wire Harness

Parts needed for this procedure:

1	Wire harness
8	Cable ties

Procedure

1. Route the harness through the union fitting (Figure 1).
2. Route the red and black wire to the 2-pin holder and secure it.
3. Connect 2-pin connector to the electric connector.
4. Secure the wire harness with cable ties shown in the following locations:

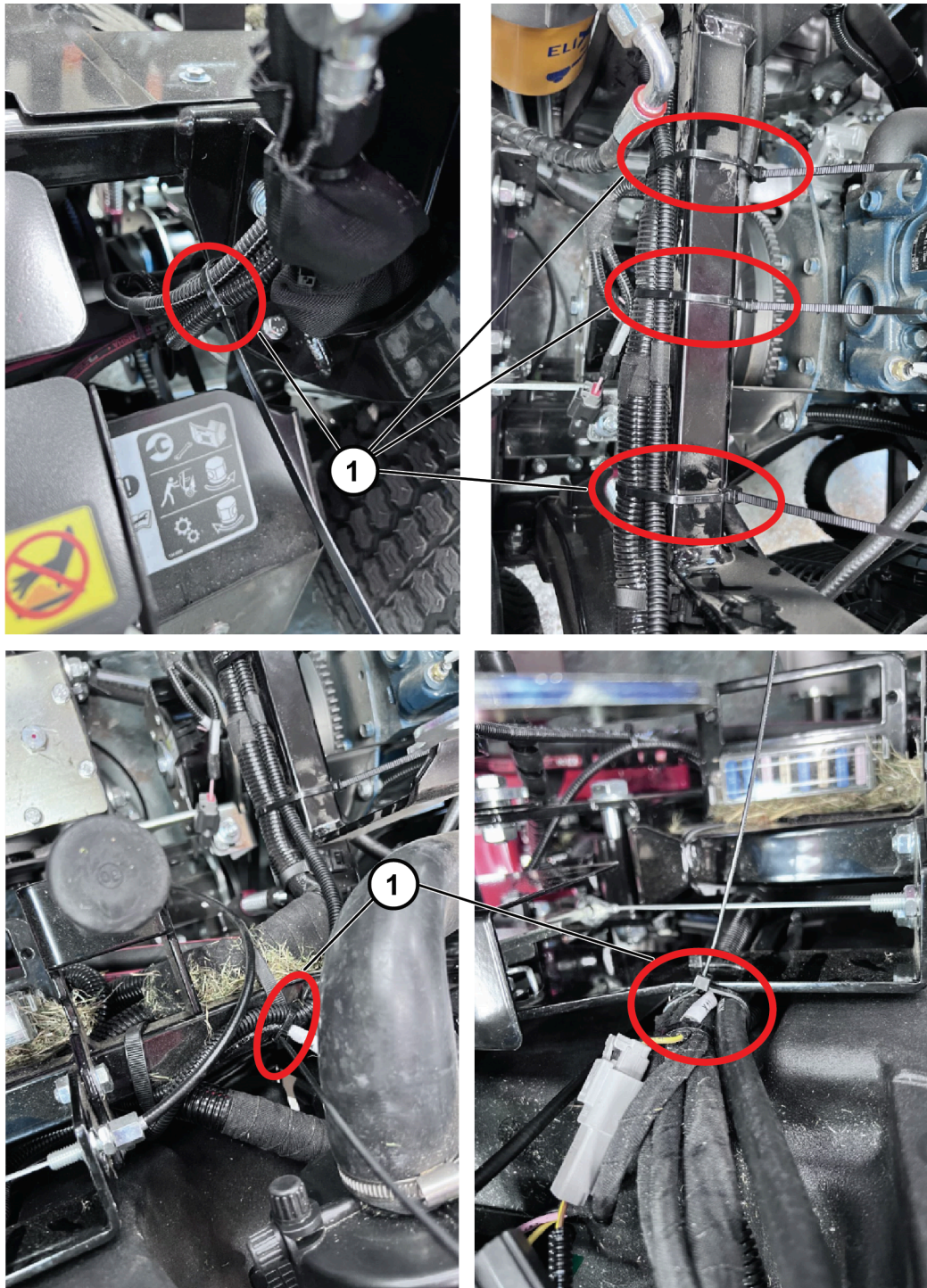


g466349

Figure 3

1. Secure harness to the rollbar

2. Secure harness here

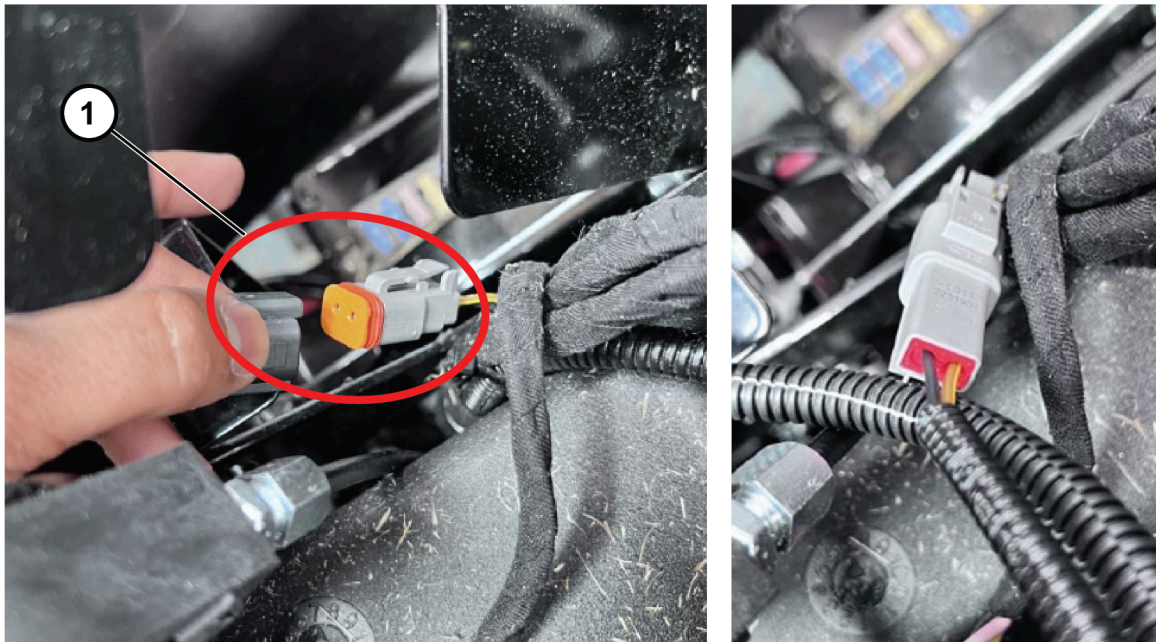


g466350

Figure 4

1. Cable ties

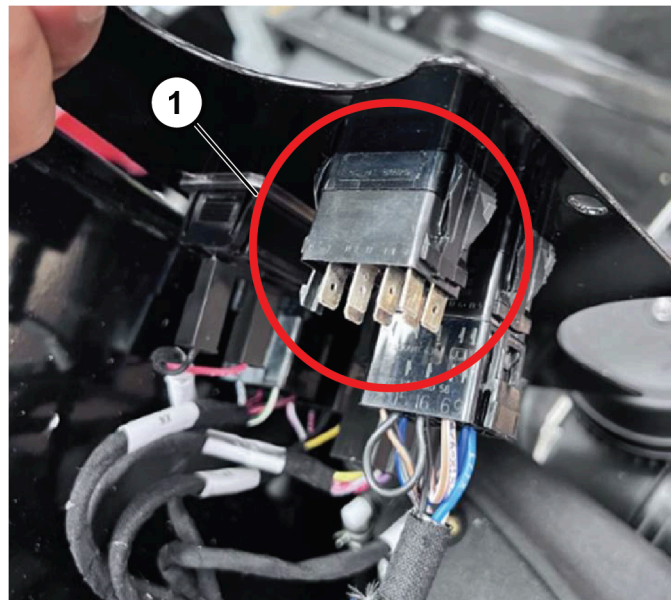
5. Connect the 2-pin connector from the beacon wire harness to the connector on PLH600 machine wire harness.



g466351

Figure 5

1. 2-pin connector
-
6. Loosen the console plate, remove the plug, install the rocker switch, and install the light switch into the console.
 7. Connect 2-pin connector to the light switch and secure the console plate with the previously removed bolts.



g466352

Figure 6

1. Beacon switch installed in the console plate
-
8. Connect the battery; refer to the electrical system maintenance section of the traction unit *Operator's Manual*.

Operation

Controls

Beacon Switch

Press the beacon switch to the ON position to activate the beacon.



g466353

Figure 7

Maintenance

- Replace all worn or damaged parts with genuine Toro parts.
- Periodically check that all lights are working.
- Ensure that the headlights are adjusted correctly.
- Clean the lights daily.

Important: Do not use solvent-based cleaning products.

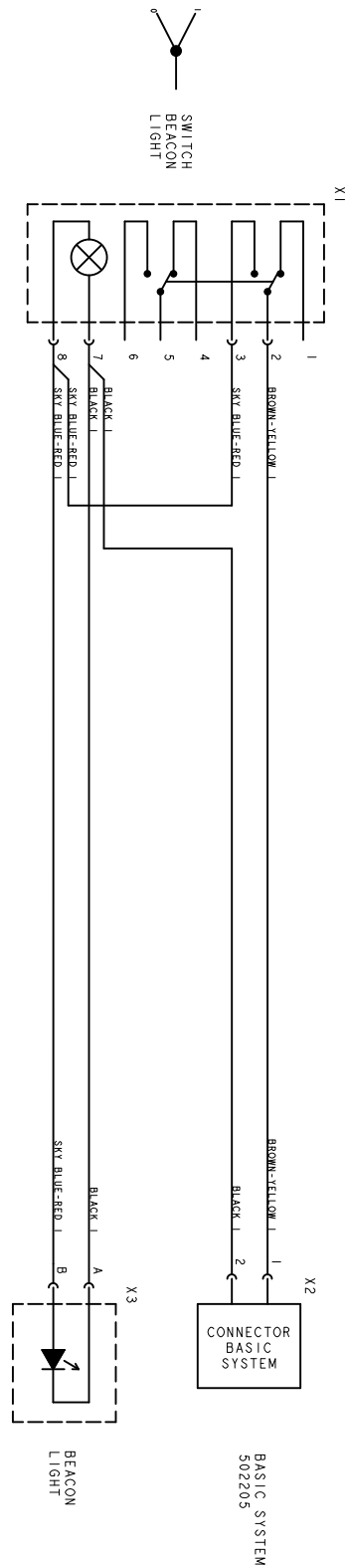


Figure 8

g467531