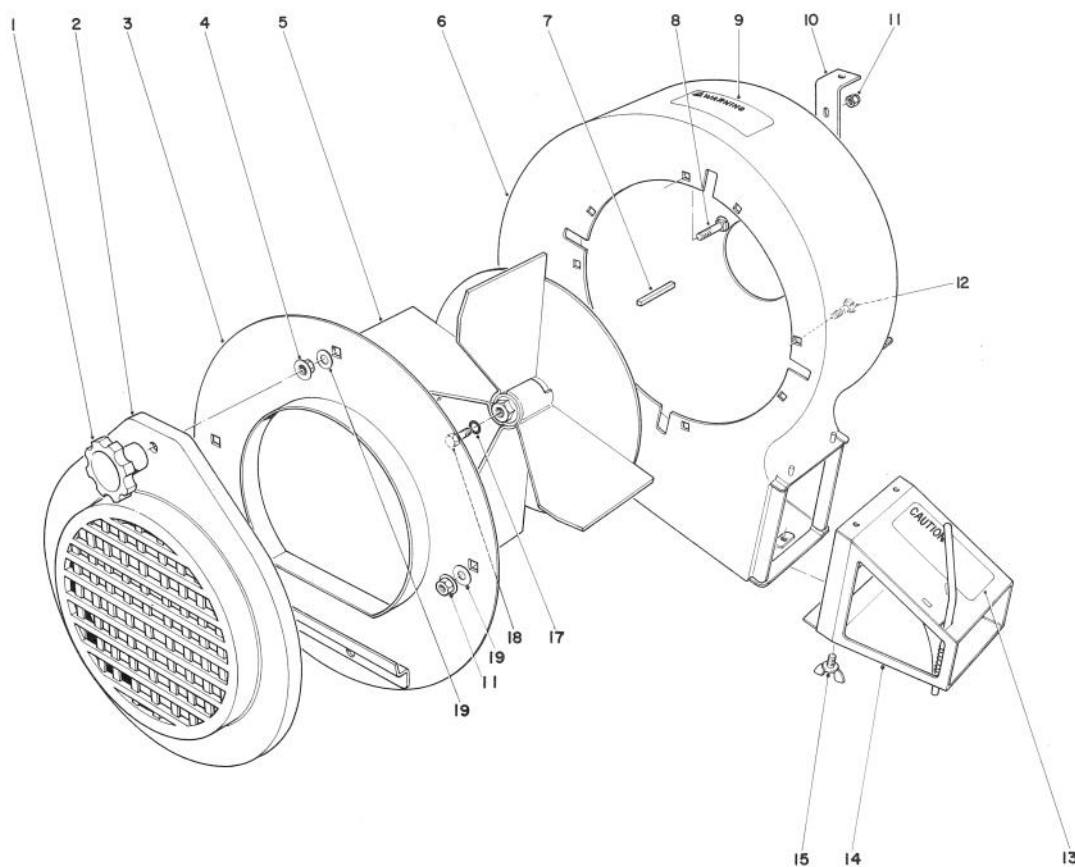


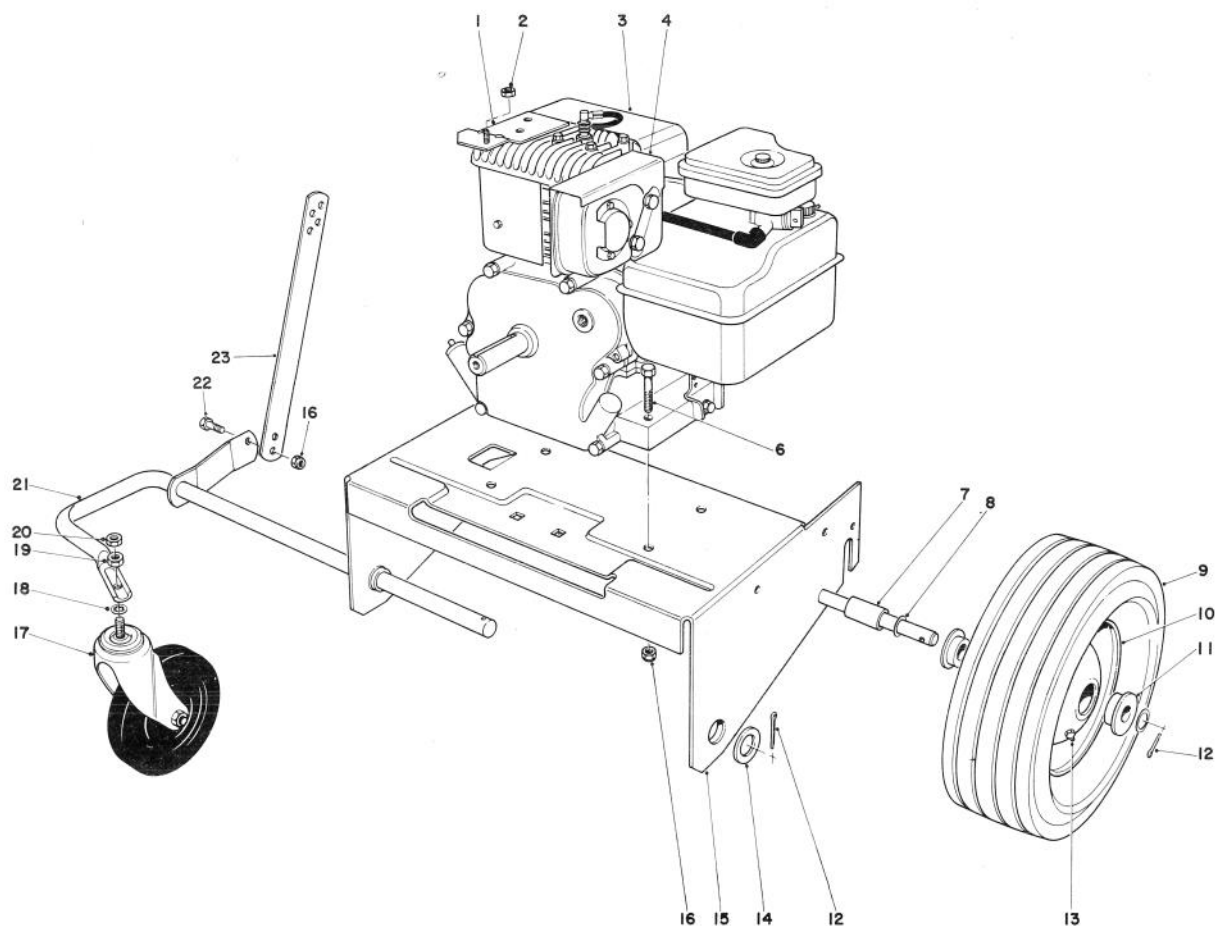


MODEL NO. 62933-1000001 & UP

**PARTS
CATALOG**
5 H.P. BLOWER

BLOWER ASSEMBLY

Ref. No.	Part No.	Description	No. Used
1	19-4050	Knob, Handle Release	1
2	20-5780	Blower Intake	1
3	20-5450	Blower Cover	1
4	32128-13	Flange Nut	1
5	37-9230	Fan	1
6	20-5890	Blower Housing	1
7	7-0036	Key	1
8	3230-3	Carriage Bolt	1
9	37-9260	Decal — Warning	1
10	39-4660	Mounting Bracket	1

Ref. No.	Part No.	Description	No. Used
11	32152-1	Locknut	5
12	3230-19	Carriage Bolt	3
13	20-7900	Decal — Exhaust	1
14	20-6570	Blower, Exhaust (Incl. Ref. #13)	1
15	3288-6	Screw Wing	1
17	3253-4	Lockwasher	1
18	40-6990	Screw — Special	1
19	3256-25	Flat Washer	3

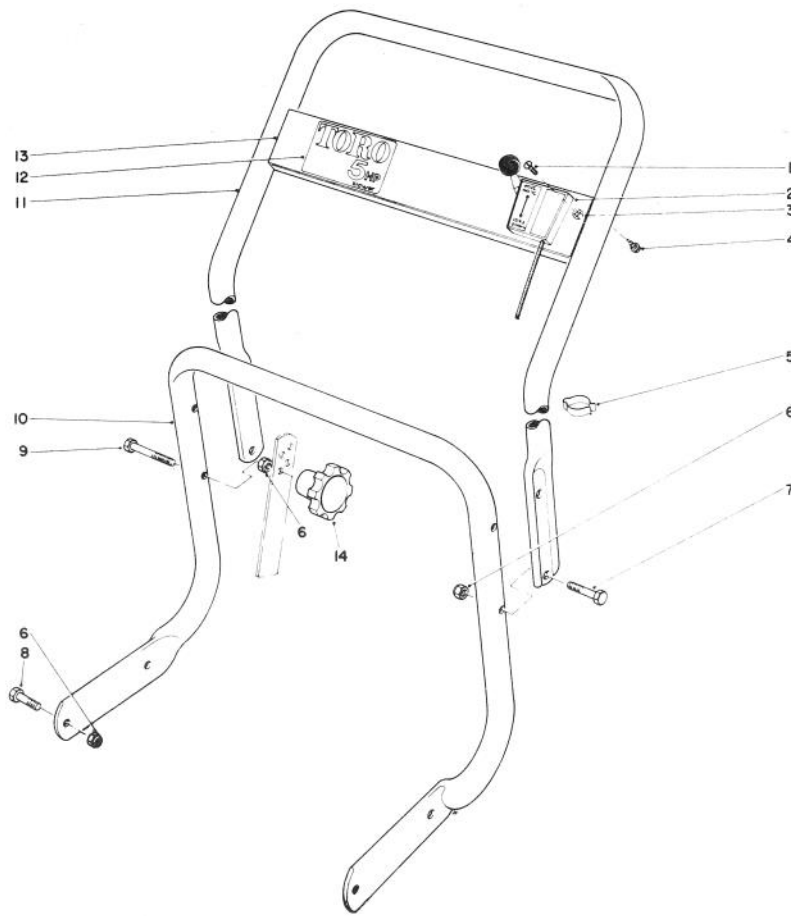


ENGINE AND BASE ASSEMBLY

Ref. No.	Part No.	Description	No. Used
1	39-4680	Mounting Bracket	1
2	3296-47	Locknut	1
3	221-643	Engine	1
4	39-4690	Heat Shield — Muffler	1
6	322-7	Capscrew	4
7	20-5410	Axle Spacer	2
8	7-3590	Washer, Special	4
9	234-22	Tire	2
10	20-3350	Wheel & Tire Assembly (Incl. Ref. #9, 11 & 13)	2
11	256-241	Bushing	4
12	3272-17	Cotter Pin	3

Ref. No.	Part No.	Description	No. Used
13	302-5	Grease Fitting	2
14	3256-29	Plain Washer	1
15	20-5570	Engine Plate	1
16	32152-1	Locknut	5
17	23-3320	Caster Wheel	1
18	3254-4	Lockwasher	1
19	3217-9	Nut	1
20	32152-3	Locknut	1
21	23-3370	Front Wheel Support	1
22	322-3	Capscrew	1
23	37-9460	Bar Height Adjustment	1
*	8-6499	Loose Parts	1

*Not Illustrated

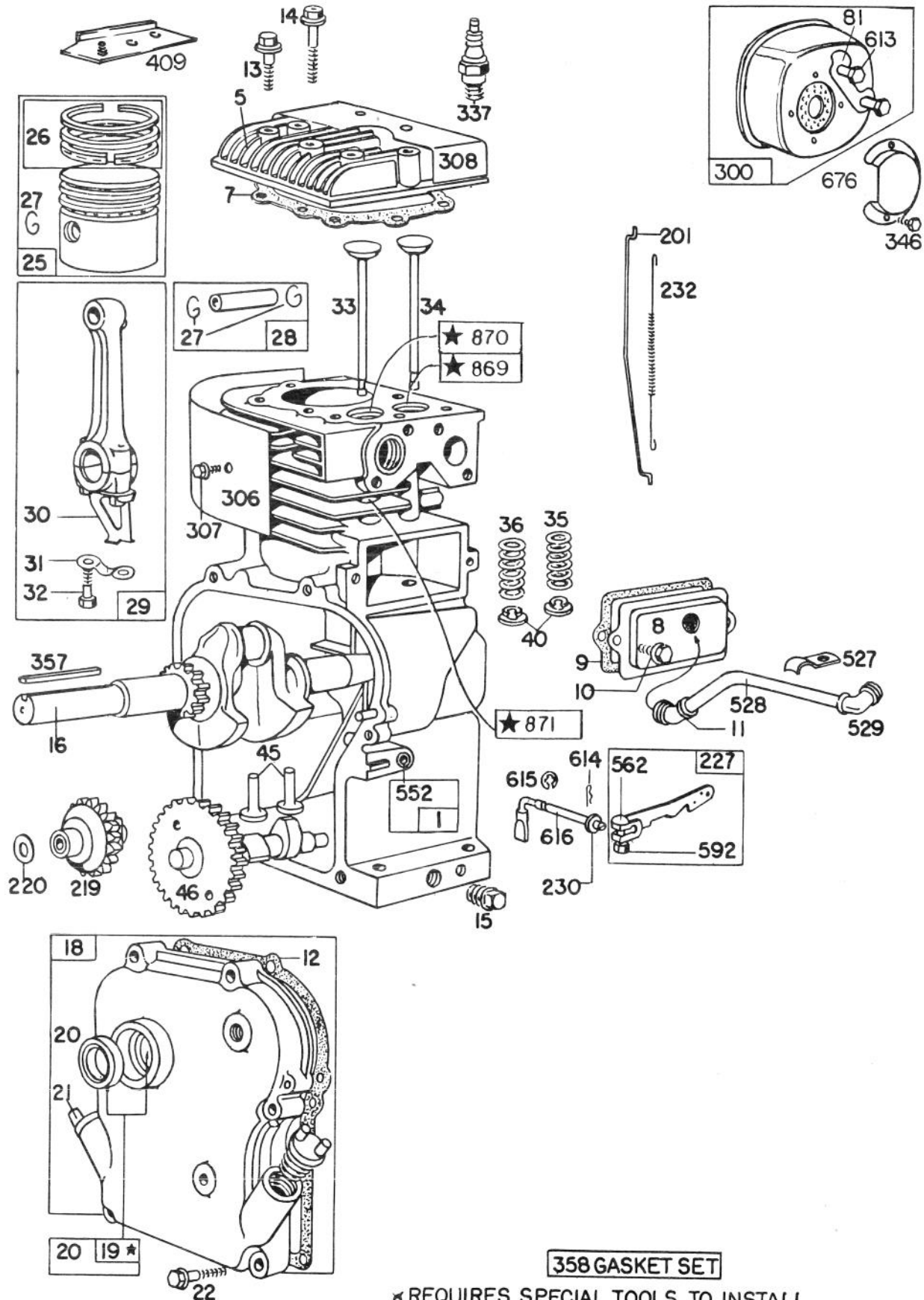


HANDLE ASSEMBLY

Ref. No.	Part No.	Description	No. Used
1	3250-1	Screw	2
2	23-3390	Throttle Control	1
3	3217-25	Nut	2
4	32104-76	Self Tapping Screw	4
5	2412-47	Clip	1
6	32152-1	Locknut	8
7	322-9	Capscrew	3

Ref. No.	Part No.	Description	No. Used
8	322-3	Capscrew	4
9	322-10	Capscrew	1
10	20-5810	Lower Handle	1
11	37-9240	Handle	1
12	20-7230	Decal — Escutcheon Plate	1
13	20-5770	Escutcheon Plate	1
14	19-4050	Knob	1

ENGINE MODEL NO. 130202 TYPE 0600-01 BRIGGS & STRATTON

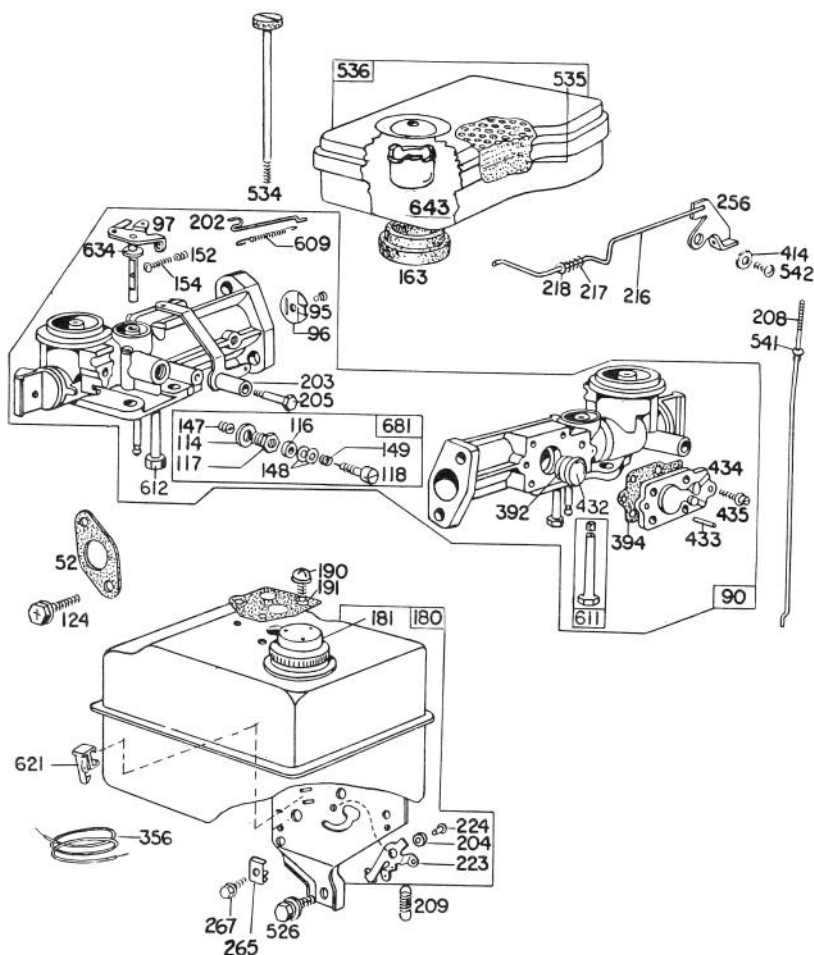


ENGINE MODEL NO. 130202 TYPE 0600-01

BRIGGS & STRATTON

Ref. No.	Part No.	Description	No. Used	Ref. No.	Part No.	Description	No. Used
1	391977	Cylinder Assembly	1	31	221876	Lock — Conn. Rod Screw	1
5	211542	Head — Cylinder	1	32	92296	Screw — Connecting Rod	1
7	*270383	Gasket — Cylinder Head	1	33	211119	Valve — Exhaust	1
8	294178	Breather — Valve Chamber	1	34	261044	Valve — Intake	1
9	*27549	Gasket — Valve Cover	1	35	260552	Spring — Intake Valve	1
10	93394	Screw — Breather Mtg.	1	36	26478	Spring — Exhaust Valve	1
11	66578	Grommet — Breather Tube	1	40	93312	Retainer — Valve Spring	1
12	*270080	Gasket — Crankcase — .015" Thick (Standard)	1	45	260642	Tappet — Valve	1
	*270125	Gasket — Crankcase — .005" Thick	1	46	211117	Gear — Cam	1
	*270126	Gasket — Crankcase — .009" Thick	1	81	222929	Lock — Screw	1
13	93368	Screw — Cylinder Head (2-3/32" Long)	1	201	260661	Link — Governor	1
14	93369	Screw — Cylinder Head (2-15/32" Long)	1	219	391737	Gear — Governor	1
15	91249	Plug — Pipe, 1/4" Std., Square Head	1	220	221551	Washer — Thrust	1
16	260938	Crankshaft	1	227	391966	Lever Assy. — Governor	1
18	297602	Cover Assy. — Crankcase	1	230	222450	Washer — Governor Lever (1/4" I.D.)	1
19	297603	Bushing — Crankcase Cover Note: Requires special tools for installation.	1	232	260478	Spring — Governor Link	1
20	294606	Seal — Oil	1	300	393593	Muffler — Exhaust (Includes Gasket) Uses: 270918 Gasket — Muffler	1
21	66768	Plug — Oil Filler	1	306	221511	Shield — Cylinder	1
22	93032	Screw — Crankcase Cover Mounting	1	307	93042	Screw — Cylinder Shield Mounting	1
		MODEL 130200 SERIES PISTON RING SETS: Note: For Chrome Piston Ring Set — Standard Size — Order Part No. 299742.		308	221512	Cover — Cylinder Head	1
25	298904	Piston Assy. — Standard	1	337	293918	Plug — Spark (with Gasket) 1-1/2" High — 37-42 M.M. (Resistor Type) Note: For Ignition Cable Terminal Order No. 221798.	1
	298905	Piston Assy. — .010" O.S.	1	346	93705	Screw — Dust Cover and Flywheel Guard Mounting	1
	298906	Piston Assy. — .020" O.S.	1	357	91539	Key	1
	298907	Piston Assy. — .030" O.S.	1	358	297615	Gasket Set	1
26	298982	Ring Set — Standard Piston	1	409	391608	Bracket Assy., Mtg. (Furnished by Toro)	1
	298983	Ring Set — .010" O.S. Piston	1	527	221514	Clamp — Breather Tube	1
	298984	Ring Set — .020" O.S. Piston	1	528	230722	Tube — Breather	1
	298985	Ring Set — .030" O.S. Piston	1	529	67838	Grommet — Breather Tube	1
27	26026	Lock — Piston Pin	1	552	231079	Bushing — Governor Crank	1
28	298909	Pin Assy. — Piston — Std.	1	562	92613	Bolt — Governor Lever	1
	298908	Pin Assy. — Piston — .050" O.S.	1	592	231082	Nut — Hex.	1
29	299430	Rod Assy. — Connecting Note: For Connecting Rod with .020" undersize Crankpin Bore — Order No. 390459.	1	613	93935	Screw — Muffler Mtg. 3/8 Dia.	1
30	221890	Dipper — Connecting Rod	1	Note:	93549	Screw — Muffler Mtg. 1/4 Dia.	1
				614	93306	Cotter — Hair Pin	1
				615	93307	Retainer — E-Ring	1
				616	231077	Crank — Governor	1
				676	222327	Deflector — Exhaust	1
				869	211158	Seat — Intake Valve (Std.)	1
				870	211172	Seat — Exhaust Valve (Std.)	1
				871	63709	Guide — Exhaust Valve	1

*Included in Gasket Set — Part No. 297615.

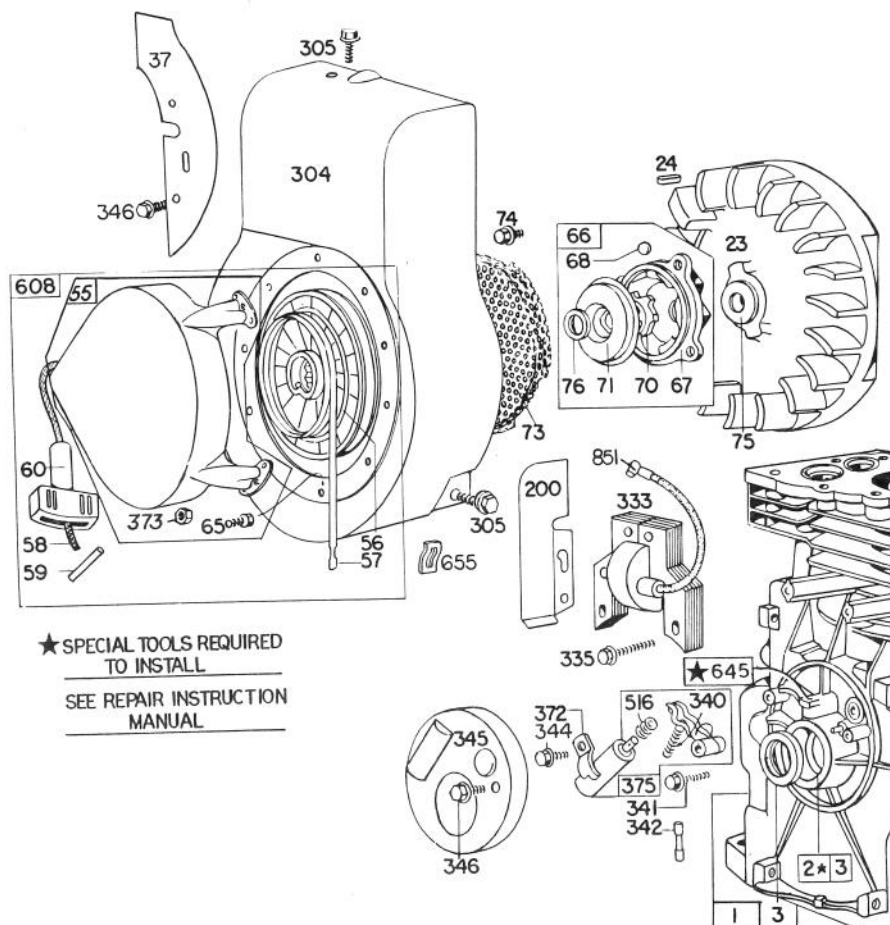


CARBURETOR ASSEMBLY

Ref. No.	Part No.	Description	No. Used
52	*27355	Gasket – Carburetor Mounting	2
90	299576	Carburetor Assembly	1
95	93499	Screw – Throttle Valve to Shaft	1
96	211203	Throttle – Carburetor	1
97	299212	Shaft and Lever – Throttle	1
114	66594	Gasket – Needle Valve Nut	1
116	65978	Packing – Needle Valve	1
117	230590	Nut – Needle Valve	1
118	23433	Valve – Needle	1
124	93357	Screw – Hex. Head	1
147	230591	Seat – Needle Valve	1
148	22235	Washer – Needle Valve	2
149	26336	Spring – Needle Valve	1
152	260575	Spring – Throttle Adjustment	1
154	92634	Screw – Machine, Rd. Hd.	1
163	27660	Gasket – Air Cleaner Mounting	1
180	297600	Tank Assembly – Fuel	1
181	297863	Cap – Fuel Tank	1
190	93341	Screw – Fuel Tank Mounting	1
191	*27911	Gasket – Fuel Tank Mounting	2
202	260678	Link – Throttle	1
203	297718	Crank – Bell	1
204	230844	Bushing – Governor Lever (Flat)	1
205	93838	Screw – Shoulder	1
208	230737	Rod – Control	1
209	260695	Spring – Governor	1
216	299859	Link – Choke (Includes Bell Crank)	1

Ref. No.	Part No.	Description	No. Used
217	260189	Spring – Choke Link	1
218	221198	Washer – Choke Link	1
223	221517	Lever – Governor Control	1
224	93491	Rivet – Governor Control Lever Mounting	1
256	299859	Crank – Bell (Includes Choke Link)	1
265	221535	Clamp – Casing	1
267	93496	Screw	1
356	295413	Wire – Ground	1
392	260455	Spring – Fuel Pump Diaphragm	1
394	270026	Diaphragm	1
414	220982	Washer	1
432	221377	Cap – Spring	1
433	93265	Pin – Diaphragm Cover	1
434	210959	Cover – Diaphragm	1
435	93141	Screw – Diaphragm Cover	1
526	93343	Screw – Tank Bracket Mounting	1
534	93322	Screw – Air Cleaner	1
535	27987	Element – Air Cleaner	1
536	297036	Cleaner Assembly – Air	1
541	22398	Washer	1
542	92265	Screw	1
609	260694	Spring – Throttle Link	1
611	391813	Fuel Pipe & Clip Assy.	1
612	296811	Pipe – Fuel	1
621	297472	Switch – Stop	1
634	270167	Washer, Throttle Shaft (Felt)	1
643	221321	Cup – Air Cleaner	1
681	299060	Needle Valve Kit	1

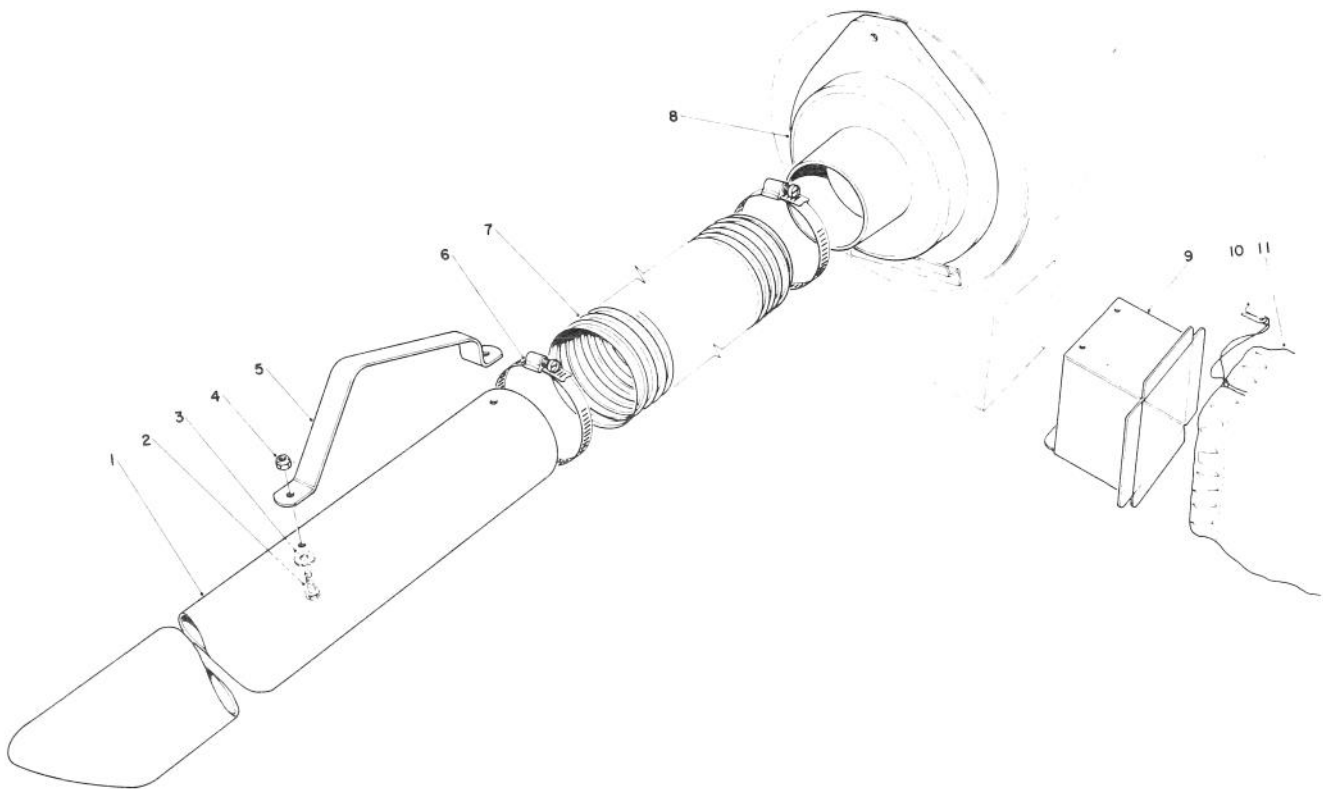
* Included in Gasket Set – Part No. 297615.



REWIND STARTER

Ref. No.	Part No.	Description	No. Used
1	391977	Cylinder Assembly	1
2	297565	Bushing — Cylinder Note: Requires special tools for installation.	1
3	89660	Seal — Oil	1
23	297229	Flywheel — Magneto	1
24	61760	Key — Flywheel	1
37	222443	Guard — Flywheel	1
55	299431	Housing — Rewind Starter	1
56	295871	Pulley — Rewind Starter (Includes 63" long Rope) If longer rope is required, order rope No. 66894 and cut to length.	1
57	294303	Spring — Rewind Starter	1
58	66884	Rope — Rewind Starter — 63" long (For use with Plastic Pulley) If longer rope is required, order rope No. 66894 and cut to length.	1
59	230228	Pin — Starter Grip	1
60	66728	Grip — Starter Rope	1
65	93067	Screw — Stamped Steel Housing Mtg.	1
66	298310	Clutch Assy. — Rewind Starter	1
67	212131	Housing — Starter Clutch	1
68	63770	Ball — Clutch	1
70	298436	Ratchet — Rewind Starter	1
71	221653	Washer — Clutch Retainer	1
73	221923	Screen — Starter Pulley	1
74	93490	Screw	1

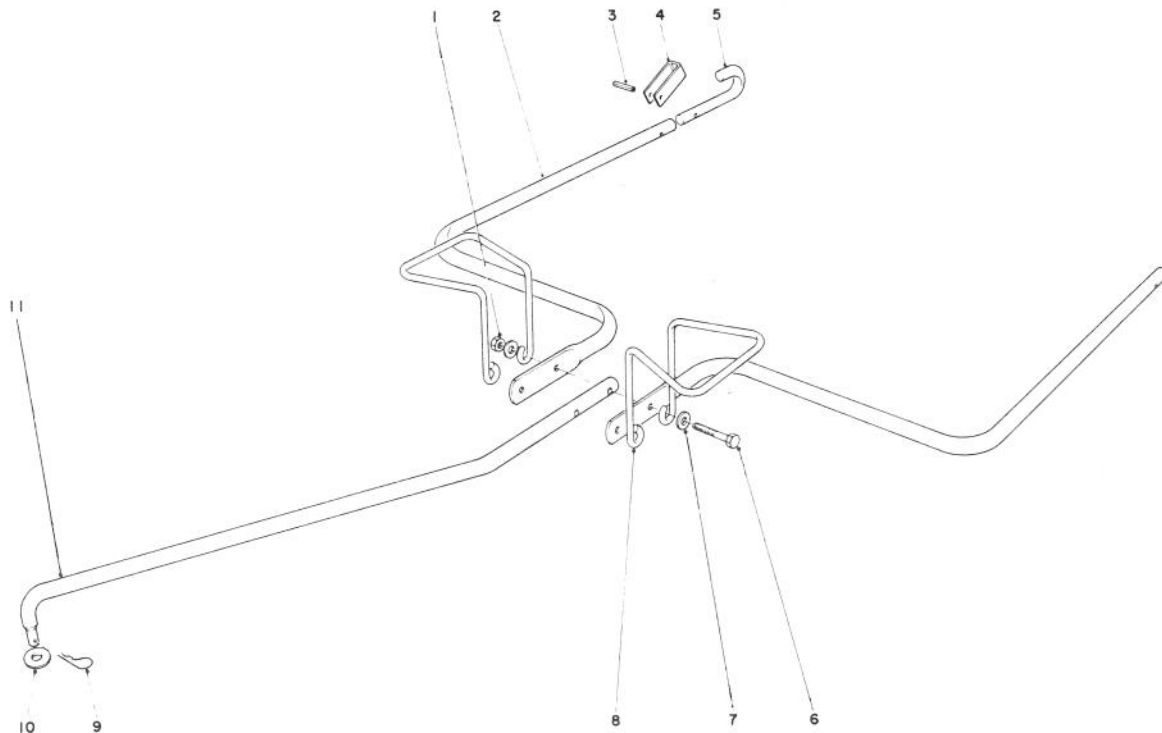
Ref. No.	Part No.	Description	No. Used
75	220865	Washer — Spring	1
76	68238	Washer — Ratchet Sealing	1
200	221480	Guide — Air	1
304	299410	Housing — Blower	1
305	93158	Screw — Blower Housing Mounting	1
333	298316	Armature — Magneto	1
335	93414	Screw — Armature Mtg.	1
340	26018	Spring — Breaker Arm	1
341	93381	Screw — Breaker Arm Mtg.	1
342	65704	Plunger — Breaker Point	1
344	93042	Screw — Condenser Clamp Mounting	1
345	220366	Cover — Breaker Point and Condenser	1
346	93705	Screw — Dust Cover and Flywheel Guard Mounting	1
372	220477	Clamp — Condenser	1
373	92987	Nut — Hex.	1
375	294628	Breaker Points and Condenser Set Note: 299061 Ignition Kit Includes: 294628 Set 65704 Plunger 61760 Key — Flywheel	1
516	260374	Spring — Connector	1
608	390463	Starter Assy. — Rewind	1
645	23513	Bushing — Plunger	1
655	222598	Anchor — Spring	1
851	221798	Cable Terminal — Ignition	1



BLOWER BAGGING KIT MODEL NO. 59084

Ref. No.	Part No.	Description	No. Used
1	20-5750	Nozzle	1
2	321-3	Capscrew	2
3	20-5690	Special Washer	2
4	32149-2	Locknut	2
5	20-6200	Handle	1
6	2412-46	Hose Clamp	2

Ref. No.	Part No.	Description	No. Used
7	20-6650	Hose — Vacuum	1
8	20-5740	Adaptor	1
9	20-7300	Housing	1
10	3-2781	Bag Cord Fastener	1
11	5-8129	Bag	1



HITCH KIT MODEL NO. 59087

Ref. No.	Part No.	Description	No. Used	Ref. No.	Part No.	Description	No. Used
1	32152-4	Lock Nut	2	7	3256-2	Flat Washer	4
2	20-8010	Hitch Arm	2	8	23-5190	Support Bag	2
3	32121-18	Pin Slotted Roll	2	9	3290-250	Hair Pin Cotter	1
4	20-8030	Hitch Lock	2	10	3290-377	Push Nut	1
5	20-8850	Hook Hitch Arm	2	11	23-5360	Hitch Pole	1
6	321-15	Capscrew	2				

The Toro Promise

A ONE YEAR LIMITED WARRANTY

The Toro Company promises to repair any TORO Product if defective in materials or workmanship. The following time periods from the date of purchase apply:

Residential Product 1 Year
Residential Products Used Commercially . . . 45 Days

The costs of parts and labor are included, but the customer pays the transportation costs. Just return any residential product to an Authorized TORO Service Dealer or TORO Distributor.

Should you feel your TORO Product is defective and wish to rely on The Toro Promise, the following procedure is recommended:

1. Contact any Authorized TORO Service Dealer, TORO Master Service Dealer, or TORO Distributor (the Yellow Pages of your telephone directory is a good reference source).
2. He will either instruct you to return the product to him or recommend another Authorized TORO Service outlet which might be more convenient.
3. Bring the product along with your original sales slip, or other evidence of purchase date, to the service dealer.
4. The servicing dealer will inspect the unit, advise you whether the product is defective and, if so, make all repairs necessary to correct the defect without extra charge to you.

If for any reason you are dissatisfied with the dealer's analysis of the defect or the service performed, you may contact us.

Write:

TORO Consumer Service Department
8111 Lyndale Avenue South
Minneapolis, Minnesota 55420

The above remedy of product defects through repair by an Authorized TORO Service Dealer is the purchaser's sole remedy for any defect.

THERE IS NO OTHER EXPRESS WARRANTY. ALL IMPLIED WARRANTIES OF MERCHANTABILITY AND FITNESS FOR USE ARE LIMITED TO THE DURATION OF THE EXPRESS WARRANTY.

Some states do not allow limitations on how long an implied warranty lasts, so the above limitation may not apply to you.

This warranty applies only to parts or components which are defective and does not cover repairs necessary due to normal wear, misuse, accidents, or lack of proper maintenance. Regular, routine maintenance of the unit to keep it in proper operating condition is the responsibility of the owner.

All warranty repairs reimbursable under The Toro Promise must be performed by an Authorized TORO Service Dealer using Toro approved replacement parts.

Repairs or attempted repairs by anyone other than an Authorized TORO Service Account are not reimbursable under The Toro Promise. In addition, these unauthorized repair attempts may result in additional malfunctions, the correction of which is not covered by warranty.

THE TORO COMPANY IS NOT LIABLE FOR INDIRECT, INCIDENTAL OR CONSEQUENTIAL DAMAGES IN CONNECTION WITH THE USE OF THE PRODUCT INCLUDING ANY COST OR EXPENSE OF PROVIDING SUBSTITUTE EQUIPMENT OR SERVICE DURING PERIODS OF MALFUNCTION OR NON-USE.

Some states do not allow the exclusion or limitation of incidental or consequential damages, so the above limitation or exclusion may not apply to you.

This warranty gives you specific legal rights, and you may also have other rights which vary from state to state.

COUNTRIES OTHER THAN THE UNITED STATES OR CANADA

Customers who have purchased TORO products exported from the United States or Canada should contact their TORO Distributor (Dealer) to obtain guarantee policies for your country, province or state. If for any reason you are dissatisfied with your Distributor's service or have difficulty obtaining guarantee information, contact

the TORO importer. If all other remedies fail, you may contact us at The Toro Company.

International Group
Service Department
One Corporate Center
7401 Metro Boulevard
Minneapolis, Minnesota 55435 U.S.A.

PRODUCT CHANGES

In an effort to make improvements available to TORO owners as quickly as possible, minor changes are incorporated into Toro's products from time to time that do not become immediately shown in the Parts Catalog. If such a change apparently has been made in your unit, which is not reflected in your manual, see your TORO distributor or his Authorized TORO Service Dealer for information and part numbers.

IMPORTANT ORDERING INSTRUCTIONS

Model and Serial Numbers

The Blower has two identification numbers: a model number and a serial number. The two numbers are stamped on a decal which is located on left front corner of engine plate. In any correspondence concerning the Blower, supply model and serial numbers to assure that correct information and replacement parts are obtained.

To order replacement parts from an Authorized TORO Service Dealer, supply the following information:

1. Model and serial numbers of the Blower.
2. Part number, description, and quantity of part(s) desired.

NOTE: Do not order by reference number if a parts catalog is being used; use the PART NUMBER.

Keep Your TORO All Toro



Insist on Genuine Toro Parts

MAINTENANCE RECORD

[illegible]

MAINTENANCE RECORD

[illegible]