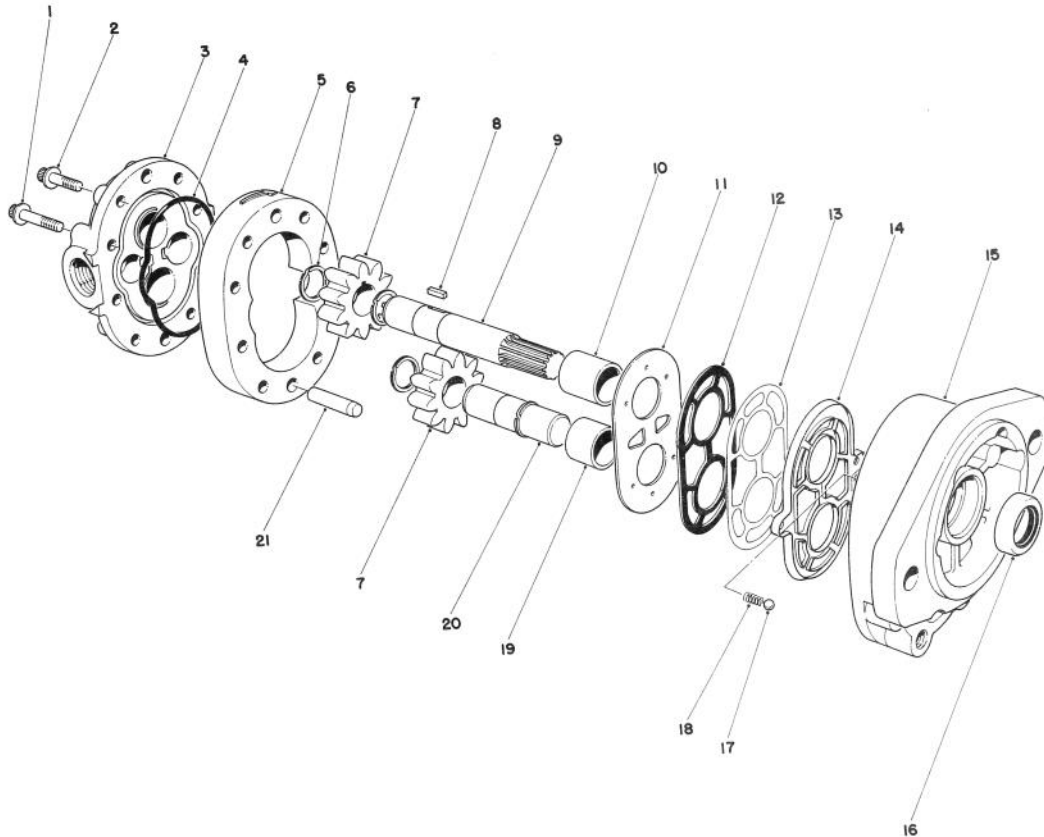



MODEL NO. 42-0220
(REPLACES 29-1330)
PARTS
CATALOG
GEAR PUMP

FOR 1979-80 TURF PRO 84 MODELS 03535, 03537 & 03590



Ref. No.	Part No.	Description	No. Used
1	42-3150	Capscrew — Flanged 12 Point	4
2	42-3140	Capscrew — Flanged 12 Point	4
3	42-3020	Back Plate	1
4	42-3120	O-Ring	1
5	42-3160	Body (Incl. Ref. #21)	1
6		Snap Ring	4
7		Gear	2
8		Key	1
9	42-3100	Drive Gear Assembly (Incl. Ref. #6, 7 & 8)	1
10		Bushing	1
11	42-3070	Diaphragm	1
12	42-3040	Back Up Gasket	1

Ref. No.	Part No.	Description	No. Used
13	42-3060	Protector Gasket	1
14	42-3050	Diaphragm Seal	1
15	42-3030	Front Plate Seal Assembly (Incl. Ref. #10 & 19)	1
16	42-3010	Shaft Seal	1
17	42-3110	Ball	2
18	42-3000	Spring	2
19		Bushing	1
20	42-3090	Idler Gear Assembly (Incl. Ref. #6 & 7)	1
21	42-3130	Dowel Pin	2
*	42-3170	Seal Repair Kit (Incl. Ref. #4, 11, 12, 13, 14, 16, 17 & 18)	1

*Not Illustrated

 COPYRIGHT © ALL RIGHTS RESERVED
The Toro Company — 1980
 MINNEAPOLIS, MN 55420 — U.S.A.

PRICE \$1.00

The Toro Promise

A ONE YEAR LIMITED WARRANTY ON COMMERCIAL PRODUCTS OTHER THAN WALK ROTARY MOWERS, TRIMMERS AND BLOWERS.

The Toro Company promises to repair any TORO Product if defective in materials or workmanship. The following time periods from the date of purchase apply:

Commercial Products	1 Year
Hevi-Duty Walk Rotary Mowers	90 Days
Trimmers and Blowers	90 Days

The costs of parts and labor are included, but the customer pays the transportation costs on walk rotary mowers, trimmers and blowers.

If you feel your TORO product is defective and wish to rely on The Toro Promise, the following procedure is recommended:

1. Contact your Authorized TORO Distributor or Commercial Dealer (the Yellow Pages of your telephone directory is a good reference source).
2. The TORO Distributor or Commercial Dealer will advise you on the arrangements that can be made to inspect and repair your product.
3. The TORO Distributor or Commercial Dealer will inspect the product and advise you whether the product is defective and, if so, make all repairs necessary to correct the defect without an extra charge to you.

If for any reason you are dissatisfied with the distributor's analysis of the defect or the service performed, you may contact us.

Write:

TORO Commercial Products Service Department
8111 Lyndale Avenue South
Minneapolis, Minnesota 55420

The above remedy of product defects through repair by an Authorized TORO Distributor or Commercial Dealer is the purchaser's sole remedy for any defect.

THERE IS NO OTHER EXPRESS WARRANTY. ALL IMPLIED WARRANTIES OF MERCHANTABILITY AND FITNESS FOR USE ARE LIMITED TO THE DURATION OF THE EXPRESS WARRANTY.

Some states do not allow limitations on how long an implied warranty lasts, so the above limitation may not apply to you.

This Warranty applies only to parts or components which are defective and does not cover repairs necessary due to normal wear, misuse, accidents, or lack of proper maintenance. Regular, routine maintenance of the unit to keep it in proper condition is the responsibility of the owner.

All warranty repairs reimbursable under the Toro Promise must be performed by an Authorized TORO Commercial Dealer or Distributor using Toro approved replacement parts.

Repairs or attempted repairs by anyone other than an Authorized TORO Distributor or Commercial Dealer are not reimbursable under the Toro Promise. In addition, these unauthorized repair attempts may result in additional malfunctions, the correction of which is not covered by warranty.

THE TORO COMPANY IS NOT LIABLE FOR INDIRECT, INCIDENTAL OR CONSEQUENTIAL DAMAGES IN CONNECTION WITH THE USE OF THE PRODUCT INCLUDING ANY COST OR EXPENSE OF PROVIDING SUBSTITUTE EQUIPMENT OR SERVICE DURING PERIODS OF MALFUNCTION OR NON-USE.

Some states do not allow the exclusion or limitation of incidental or consequential damages, so the above limitation or exclusion may not apply to you.

This warranty gives you specific legal rights, and you may also have other rights which vary from state to state.

COUNTRIES OTHER THAN THE UNITED STATES OR CANADA

Customers who have purchased TORO products exported from the United States or Canada should contact their TORO Distributor (Dealer) to obtain guarantee policies for your country, province or state. If for any reason you are dissatisfied with your Distributor's service or have difficulty obtaining guarantee information, contact

the TORO importer. If all other remedies fail, you may contact us at The Toro Company.

International Group
Service Department
One Corporate Center
7401 Metro Boulevard
Minneapolis, Minnesota 55435 U.S.A.