



# Deck Bracket Kit

Groundsmaster® 3200 or 3300 Series Traction Unit

Model No. 147-0090

## Installation Instructions

# Installation

## Loose Parts

Use the chart below to verify that all parts have been shipped.

Procedure	Description	Qty.	Use
<b>1</b>	No parts required	–	Prepare the machine.
<b>2</b>	Shoulder bolt Locknut	2 2	Prepare to install the deck channels.
<b>3</b>	Hex-head flange bolt Flange nut Deck channel Hex-head bolt Washer	4 4 2 2 2	Install the deck channels.



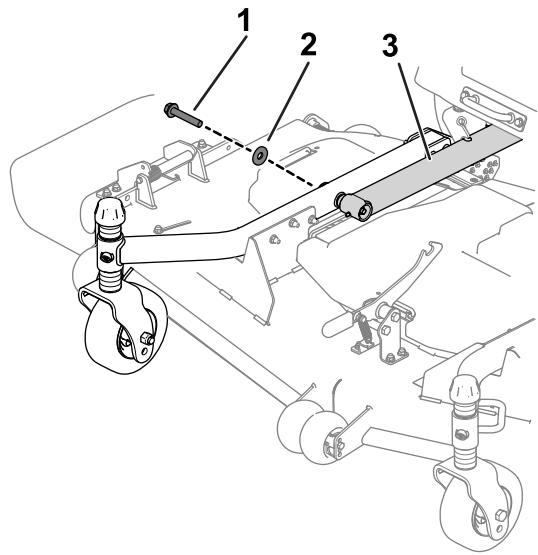
# 1

## Preparing the Machine

No Parts Required

### Procedure

1. Park the machine on a level surface.
2. Engage the parking brake.
3. Lower the attachment.
4. Shut off the engine and remove the key.



g444222

Figure 1

Right lift arm shown

1. Bolt
2. Washer
3. Right lift arm

# 2

## Preparing to Install the Deck Channels

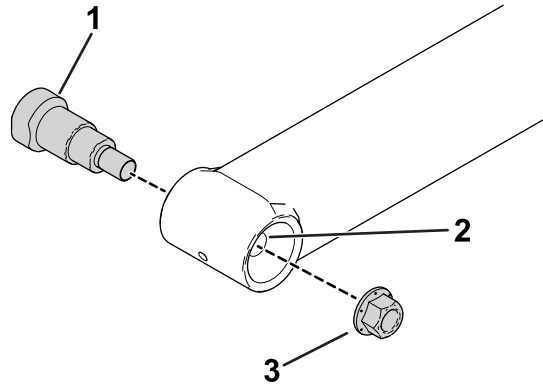
Parts needed for this procedure:

2	Shoulder bolt
2	Locknut

### Procedure

Perform these steps for both lift arms.

1. Disconnect the existing hex-head bolt and washer that connects the deck to the lift arm (Figure 1).



g447389

Figure 2

1. Shoulder bolt
2. Spherical bearing
3. Locknut

4. Loosely install the new shoulder bolt and locknut to the lift arm (Figure 2).
5. Torque the locknut to 114 to 135 N·m (84 to 100 ft-lb).

**Important:** Slowly tighten the locknut to pull the shoulder bolt into the spherical bearing. Avoid binding or damage to the shoulder-bolt threads.

6. Ensure that the deck-hub surface is clean. Remove any debris, dirt, or weld spatter.

# 3

## Installing the Deck Channels

### Parts needed for this procedure:

4	Hex-head flange bolt
4	Flange nut
2	Deck channel
2	Hex-head bolt
2	Washer

### Procedure

Perform these steps for both lift arms.

- Slide the deck channel over the deck tube (Figure 3) and use a clamp to secure the deck channel to the deck tube.

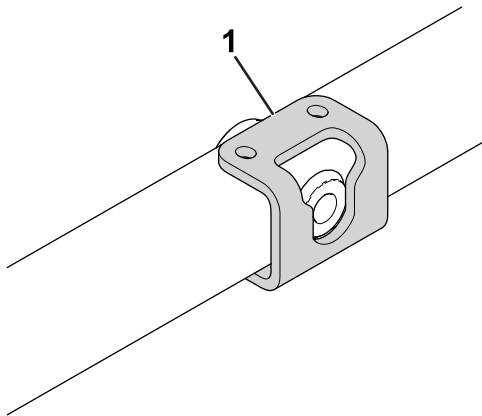


Figure 3

g444223

- Deck channel

- Lower the lift arm so that the lift-arm hub is positioned in the deck channel.
- Loosely assemble the hex-head bolt and washer to ensure that the saddle and hub are centered (Figure 4).

**Important:** Ensure that the “cup” of the washer is toward the lift arm. Do not tighten or torque the bolt.

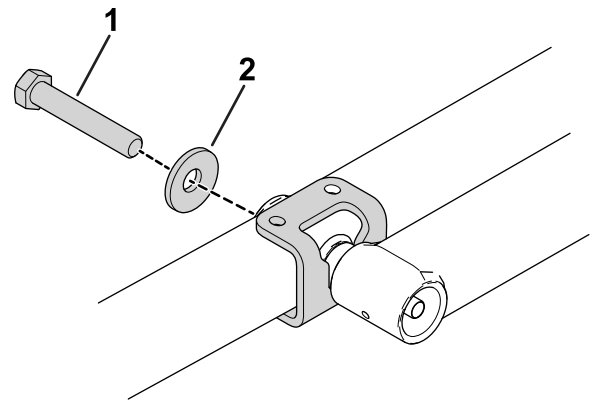


Figure 4

g444224

- Existing large bolt
- Washer

- Mark the 2 bolt-hole locations in the deck tube and use an drill bit (11/32 inch) to drill through the marked deck-tube holes. Drill through bolt sides of the tube (Figure 5).

### ⚠ WARNING

Using a drill without proper eye protection may allow debris to enter the eye, causing injury.

When drilling, always wear eye protection.

**Important:** Ensure that the drill is properly aligned so that you drill only through the deck tube.

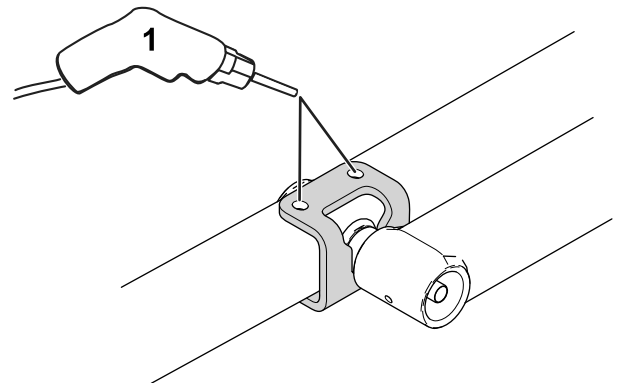
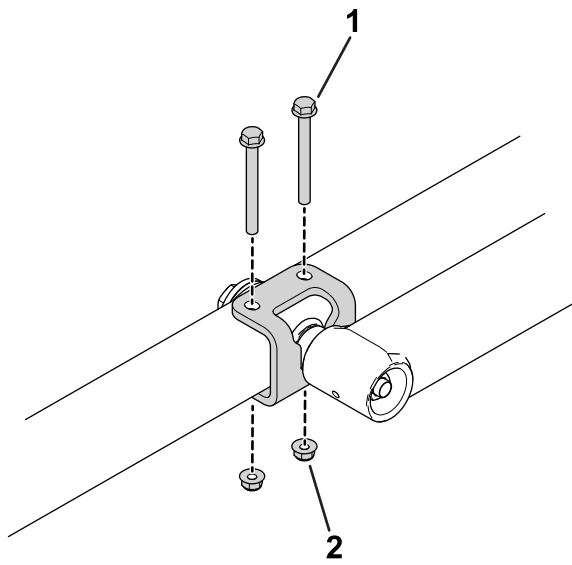


Figure 5

g444225

- Drill holes in the deck tube.

- Use the hex-head flange bolts and flange nuts to secure the deck channel to the deck tube (Figure 6).



g444226

**Figure 6**

1. Hex-head flange bolt      2. Flange nut

- 
6. Torque the hex-head bolt (shown in [Figure 4](#)) to 271 N·m (200 ft-lb).

**Note:** You do not need to use a backup wrench, as the deck channel holds the shoulder-bolt hub and keeps it from rotating.