



## Oil Cooler Kit

### Greensmaster® 3150

Model No. 105–8339

## Parts Catalog

---

### Ordering Replacement Parts

To order replacement parts, please supply: the part number, the quantity, and the description of each part desired.

### Understanding Reference Numbers

Each identified part in an illustration has a reference number. The reference number for a part also appears in the parts list, along with other information about the part.

This catalog uses two special reference number formats, one to indicate parts in a service assembly and another to indicate the quantity of a given part in an illustration.

### Service Assembly Reference Numbers

Parts in service assemblies have reference numbers in the form **a:b**. The **a** represents the reference number of the entire service assembly and the **b** represents a sequential number unique to each part within the service assembly.

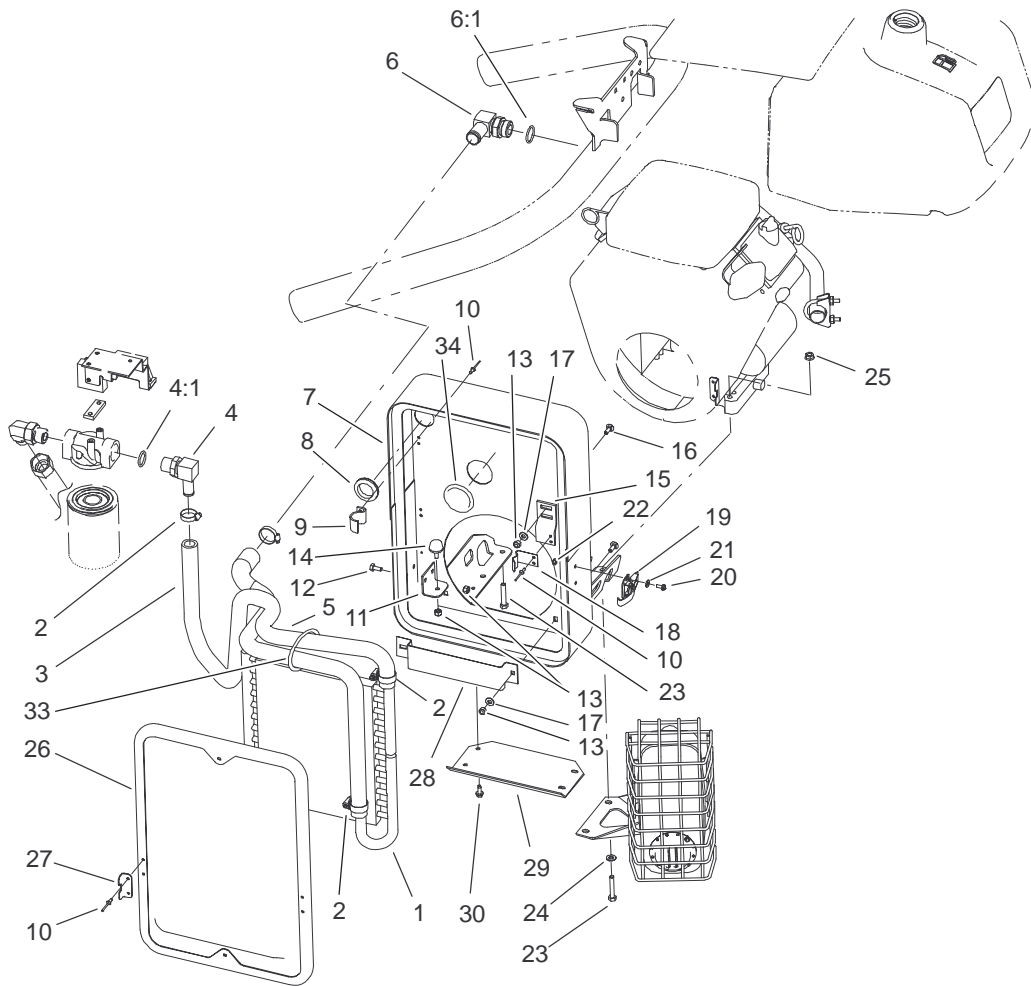
For example, a wheel assembly might be identified by reference number **6**, the tire by **6:1**, the valve by **6:2**, and the wheel by **6:3**. When you order the assembly identified by reference number **6**, you receive all parts identified by reference numbers **6:1**, **6:2**, and **6:3**. However, you may also order any part individually.

Reference numbers of this type appear in illustrations and in part lists.

### Reference Numbers Indicating Quantity

In an illustration, if a reference number indicates more than one part, the reference number has the form **nX y**. The **n** represents the quantity of the part, the **X** is the multiplication symbol, and the **y** represents the reference number.

For example, in an illustration, the reference number **2X 37** means that two of the parts identified by reference number **37** are indicated.



Sheet No.:0

## Oil Cooler Kit Assembly

Ref. No.	Part No.	Qty.	Description
1	104-2070	1	Cooler-Oil
2	2412-129	3	Clamp-Hose
3	106-4634	1	Hose-Molded, In
4	353-987	1	Fitting-HYD, 90°
4:1	237-81	1	O-Ring
5	106-4635	1	Hose-Molded, Out
6	106-4609	1	Fitting-90°, Hose
6:1	237-177	1	O-Ring
7	106-4632-03	1	Support-Cooler, Oil
8	240-3	2	Grommet-Rubber
9	93-2424	2	Bracket-Cooler, Lower
10	3269-15	12	Rivet
11	106-4622	1	Bracket-Support, Cooler
12	321-3	2	Screw-HH
13	3296-42	9	Nut-Lock, NI
14	1-523420	1	Bumper
15	106-4625	2	Bracket-Latch
16	3229-1	6	Screw-CARR
17	3256-22	6	Washer-Flat
18	104-7736	2	Bracket-Cooler, Upper
19	249-21	2	Clamp-Slotted
20	3290-321	4	Screw-HWH
21	3256-14	4	Washer-Flat
22	3296-12	4	Nut-Lock
23	322-9	4	Screw-HH

Ref. No.	Part No.	Qty.	Description
24	3256-23	2	Washer-Flat
25	32128-20	4	Nut-HF
26	100-3172-03	1	Screen ASM
27	106-4633	2	Bracket-Latch
28	106-4636-03	1	Bracket-Baffle
29	106-4637-03	1	Plate-Shield
30	32144-10	4	Screw-HWH
33	3290-379	1	Tie-Cable
34	2410-30	1	Cap-Plastic