



Muffler and Spark Arrestor Kit 200 Series Z Master[®]

Part No. 105–1677

Part No. 105–1678

Part No. 105–1679

Part No. 105–3633

Parts Catalog

Ordering Replacement Parts

To order replacement parts, please supply: the part number, the quantity, and the description of each part desired.

Understanding Reference Numbers

Each identified part in an illustration has a reference number. The reference number for a part also appears in the parts list, along with other information about the part.

This catalog uses two special reference number formats, one to indicate parts in a service assembly and another to indicate the quantity of a given part in an illustration.

Service Assembly Reference Numbers

Parts in service assemblies have reference numbers in the form **a:b**. The **a** represents the reference number of the entire service assembly and the **b** represents a sequential number unique to each part within the service assembly.

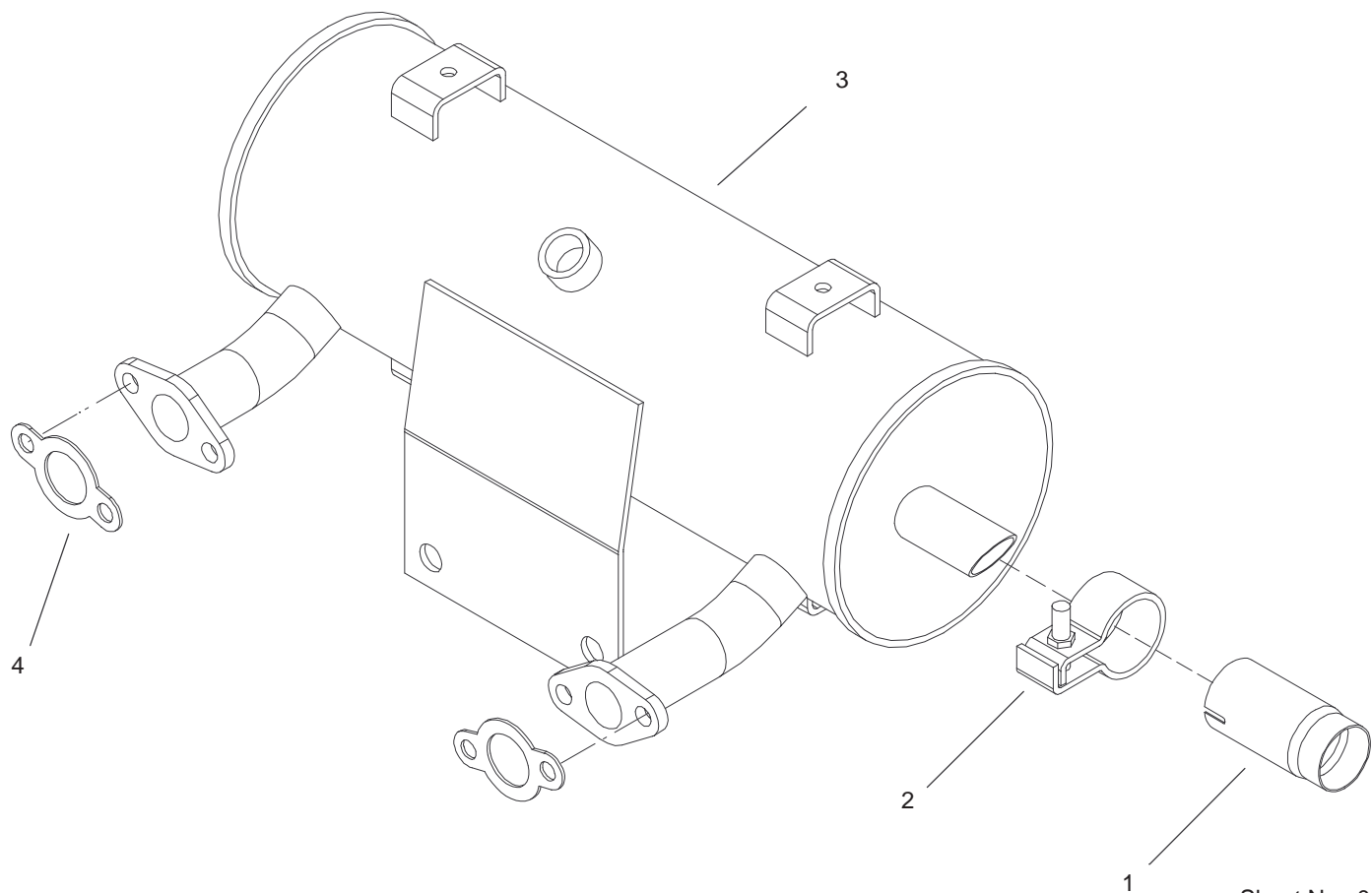
For example, a wheel assembly might be identified by reference number **6**, the tire by **6:1**, the valve by **6:2**, and the wheel by **6:3**. When you order the assembly identified by reference number **6**, you receive all parts identified by reference numbers **6:1**, **6:2**, and **6:3**. However, you may also order any part individually.

Reference numbers of this type appear in illustrations and in part lists.

Reference Numbers Indicating Quantity

In an illustration, if a reference number indicates more than one part, the reference number has the form **nX y**. The **n** represents the quantity of the part, the **X** is the multiplication symbol, and the **y** represents the reference number.

For example, in an illustration, the reference number **2X 37** means that two of the parts identified by reference number **37** are indicated.



Sheet No.: 0

Muffler and Spark Arrester Assembly

Ref. No.	Part No.	Qty.	Description
1	103-1513	1	Arrestor-Spark (only on: 74216, 74241, 74235, 74234, 74240)
1	103-1511	1	Arrestor-Spark (only on: 74236, 74213, 74214)
2	103-1514	1	Clamp-Muffler (only on: 74216, 74241, 74235, 74234, 74240)
2	103-1512	1	Clamp-Muffler (only on: 74236, 74213, 74214)
3	103-1321	1	Muffler (only on: 74216)
3	103-0059	1	Muffler (only on: 74236, 74213, 74214)
3	103-2430	1	Luffler (only on: 74241, 74240)
3	103-0202	1	Muffler (only on: 74235, 74234)
4	103-1564	2	Gasket-Exhaust (only on: 74236, 74213, 74214)
4	1-653313	2	Gasket-Exhaust Manifold (only on: 74235, 74234)

Ref. No.	Part No.	Qty.	Description
4	1-653291	2	Gasket (only on: 74241, 74240)
4	103-1563	2	Gasket-Exhaust (only on: 74216)