



Setup Instructions

For Serial Nos. 416,150,475 & Higher

Loose Parts

Use the chart below to verify that all parts have been shipped. Part numbers not shown are available on the dealer extranet.

Dealer Pack			
Part No.	Description	Qty.	Use
104-8301	Nut-Nyloc 3/8-16 Flg	3	Installing the side bumpers (Non-Wing Deck Rear Discharge Models Only).
3231-7	Bolt-Carriage 3/8-16 x 2 1/4	3	
103-2106	Key, Exmark Logo	1	Fill out the online warranty registration form and place keys into literature pack.
1-603511	Key, Standard	1	

Literature Pack
Manual, Operator's
Manual, Engine Operator's (Non-Exmark Engines)



Raise the Rollover Protection System (ROPS)

1. Pull the knob and rotate 90° to the unlatched position (see Figure 1).

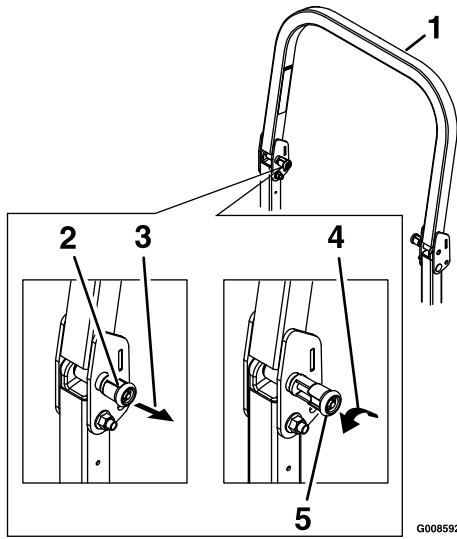


Figure 1

1. Roll bar upper hoop
 2. Knob in "latched" position
 3. Pull knob to unlatch
 4. Rotate 90° to hold unlatched
 5. Knob in "unlatched" position
-
2. Raise and hold the upper hoop of the roll bar in the upright position.
 3. To lock the roll bar in the raised, operate position, rotate the knobs 90° so that the tabs interlock partially. Apply forward pressure to the roll bar hoop and observe that the knobs return to the completely latched position as shown in Figure 1.

Checking Tire Pressure

1. Check the tire pressure in the drive tires.
 - All Models Except Wing Deck Models: 13 psi (90 kPa)
 - Wing Deck Models: 18 psi (124 kPa)
2. Check the tire pressure in the pneumatic front caster tires. Proper inflation is 13 psi (90 kPa).
3. Adjust if necessary.

Note: Semi-pneumatic caster tires Do Not need to be inflated.

Note: "A5" Models Do Not need to be inflated.

Servicing the Battery

⚠ WARNING

CALIFORNIA Proposition 65 Warning

Battery posts, terminals, and related accessories contain lead and lead compounds, chemicals known to the State of California to cause cancer and reproductive harm.
Wash hands after handling.

Important: The machine is shipped with a filled lead acid battery.

⚠ DANGER

Charging or jump starting the battery may produce explosive gases. Battery gases can explode causing serious injury.

- Keep sparks, flames, or cigarettes away from battery.
- Ventilate when charging or using battery in an enclosed space.
- Make sure venting path of battery is always open once battery is filled with acid.
- Always shield eyes and face from battery.

⚠ DANGER

Battery electrolyte contains sulfuric acid, which is poisonous and can cause severe burns. Swallowing electrolyte can be fatal or if it touches skin can cause severe burns.

- Wear safety glasses to shield eyes, and rubber gloves to protect skin and clothing when handling electrolyte.
- Do Not swallow electrolyte.
- In the event of an accident, flush with water and call a doctor immediately.

1. Check the voltage of the battery with a digital voltmeter. Locate the voltage reading of the battery in the table below and charge the battery for the recommended time interval to bring the charge up to a full charge of 12.6 volts or greater.

Important: Make sure the negative battery cable is disconnected and the battery charger used for charging the battery should have an output of 16 volts and 7 amps or less to

avoid damaging the battery (see chart for recommended charger settings). This is especially important on Kohler EFI (Electronic Fuel Injection) units. Failure to do so may damage the ECU (Electronic Control Unit).

Voltage Reading	Percent Charge	Maximum Charger Settings	Charging Interval
12.6 or greater	100%	16 volts/7 amps	No Charging Required
12.4 – 12.6	75–100%	16 volts/7 amps	30 Minutes
12.2 – 12.4	50–75%	16 volts/7 amps	1 Hour
12.0–12.2	25–50%	14.4 volts/4 amps	2 Hours
11.7–12.0	0–25%	14.4 volts/4 amps	3 Hours
11.7 or less	0%	14.4 volts/2 amps	6 Hours or More

⚠ CAUTION

If the ignition is in the “ON” position there is potential for sparks and engagement of components. Sparks could cause an explosion or moving parts could accidentally engage causing personal injury.

Be sure ignition switch is in the “OFF” position before charging the battery.

2. Connect the negative battery cable.

Note: If the positive cable is also disconnected, connect the **positive (red) cable** to the positive battery terminal **first**, then the negative (black) cable to the negative battery terminal. Slip insulator boot over the positive terminal.

Note: If time does not permit charging the battery, or if charging equipment is not available, connect the negative battery cable and run the vehicle continuously for 20 to 30 minutes to sufficiently charge the battery.

Installing the RH Side Bumper (Non-Wing Deck Rear Discharge Models Only)

Mount the side bumpers in the top holes when operating in height of cuts higher than 2 1/2 inches (64 mm) and in the center holes when operating in height of cuts lower than 2 1/2 inches (64 mm).

1. Raise the deck to the 5 1/2 inch (14 cm) height position (also transport position).
2. The RH bumper is zip tied to the unit for shipping. Remove and discard zip ties.

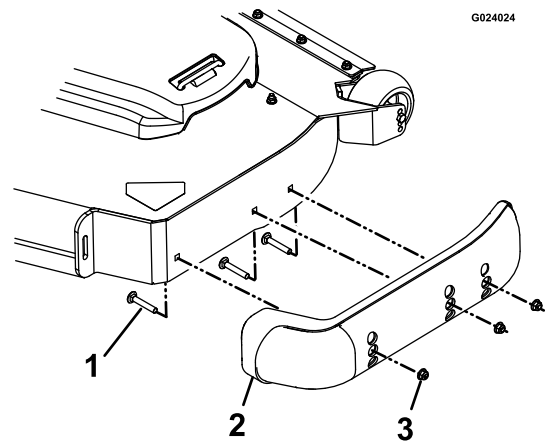


Figure 2

1. Carriage bolt
2. Bumper (center hole mounting shown)
3. Nyloc nut

3. Move each bumper to the desired position and secure with three 3/8–16 x 2 1/4 inch carriage bolts and 3/8 inch nyloc nuts. Torque to 10-12 ft-lb (14-16 N-m).

Positioning the Discharge Deflector (Side Discharge Units)

Loosen the two 3/8 inch nyloc nuts attaching the discharge deflector. Lower the discharge deflector into position. Retighten the nyloc nuts until the deflector is snug but can pivot freely.

Servicing the Engine

The engine is shipped with oil; check oil level and if necessary fill to the appropriate level. Exmark 4-Cycle Premium Engine Oil is recommended; refer to the Engine Owner's manual for an appropriate API rating and viscosity.

Servicing the Hydraulic Oil

The machine is shipped filled with hydraulic oil in the reservoirs.

1. Check hydraulic reservoirs and if necessary fill to the appropriate level with Exmark Premium Hydro Oil.
2. Adjust the seat to the most forward position to access the caps on the LH and RH hydro drives.

3. Remove the cap, wipe the dipstick clean, and re-insert the cap back into the hydro. Loosely tighten the cap.
4. Remove the cap again and check the level of the oil on the dipstick. See Figure 3 for oil levels.

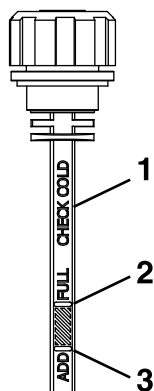


Figure 3

- | | |
|---------------|--------|
| 1. Check cold | 3. Add |
| 2. Full | |

g329524

Note: The oil level on the dipstick will be incorrect if the oil is checked when the unit is hot.

5. If the dipstick oil level is at the “add” mark add Exmark Premium Hydro oil.
6. Replace hydraulic reservoir cap and tighten until snug. **Do Not overtighten.**

Servicing Deck Lift Power Unit Fluid–Wing Deck Model Only

1. The oil level should be slightly above the internal gear pump in the tank (reference Figure 4). If needed, add Exmark Ruby Tran™ oil.

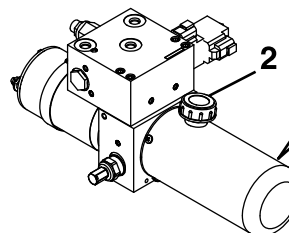
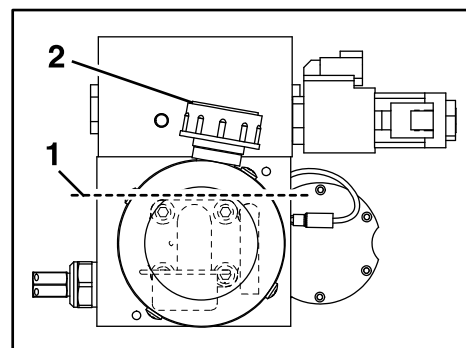


Figure 4

g299037

- | | |
|--------------|-------------|
| 1. Oil level | 2. Fill cap |
|--------------|-------------|

2. Replace hydraulic reservoir cap and tighten until snug. **Do Not overtighten.**

Filling Out the Product Registration

Fill out the online warranty registration form and place keys into literature pack.