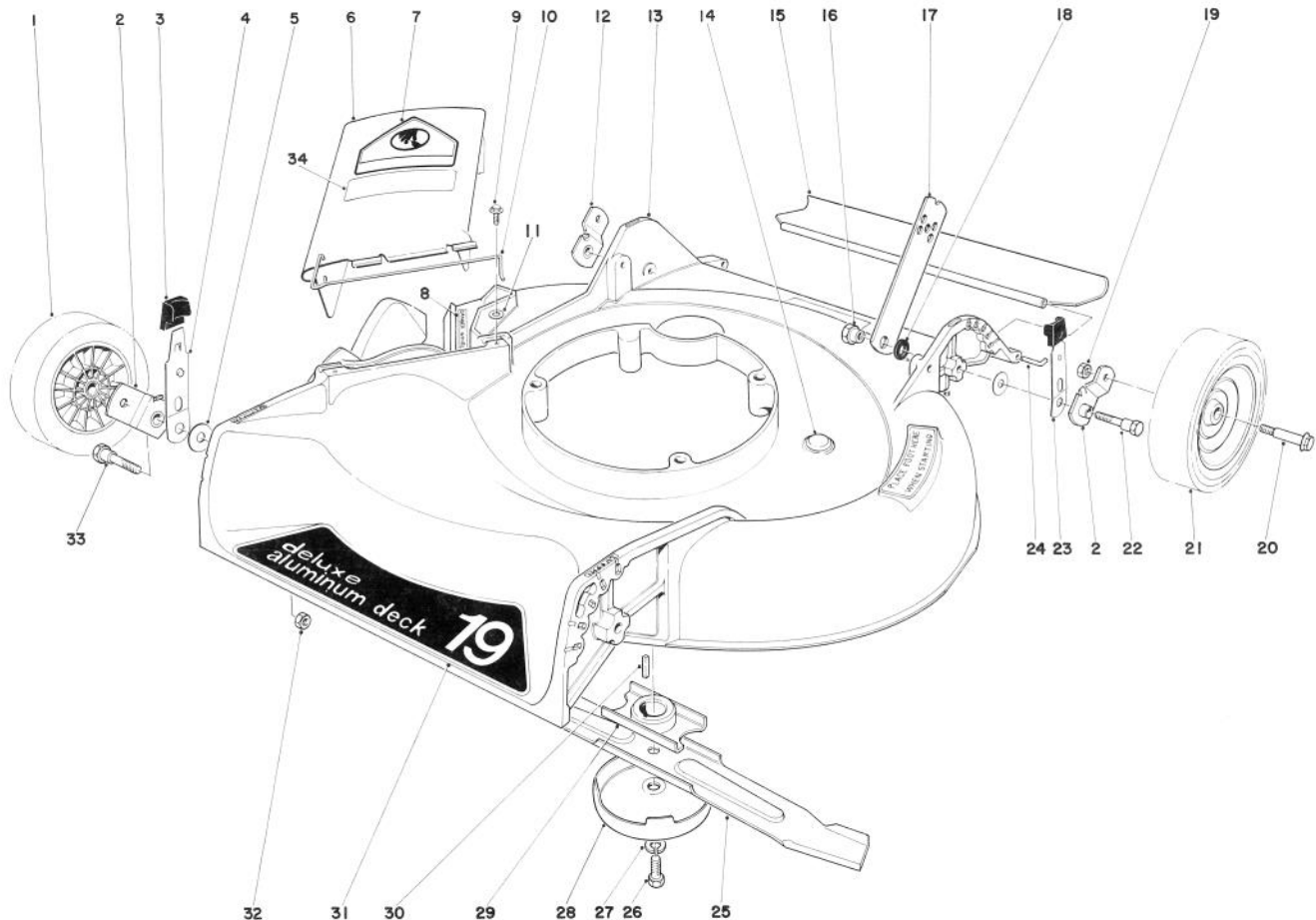


# TORO®

19" H.P. MODEL NO. 16300-1000001 & UP  
21" H.P. MODEL NO. 16310-1000001 & UP

## PARTS CATALOG

### 19" AND 21" H.P. FINGERTIP START SIDE DISCHARGE

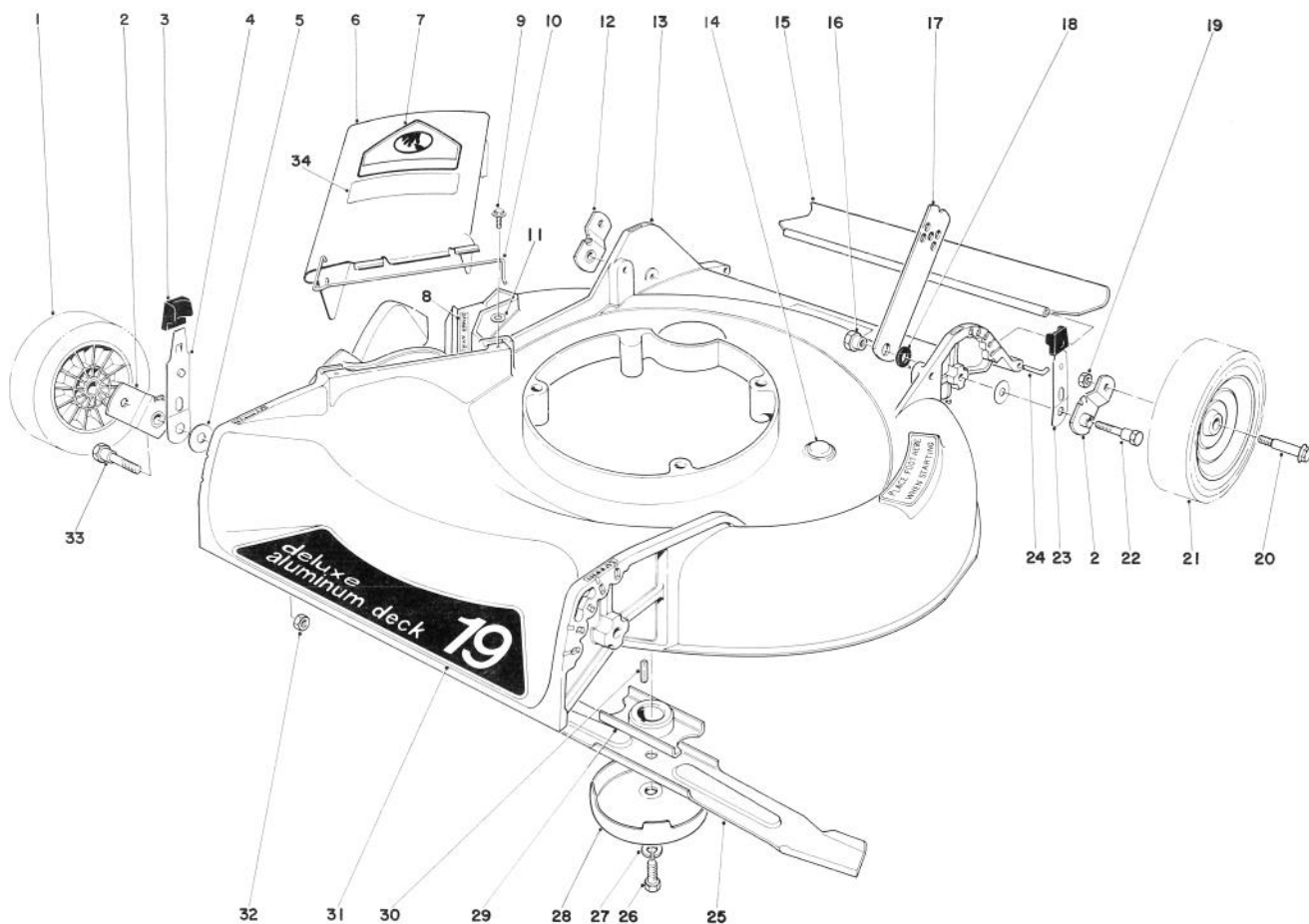


## HOUSING ASSEMBLY

Ref. No.	Part No.	Description	No. Used
1	17-4140	Wheel & Tire Assembly (Model 16300)	2
*	17-4120	Wheel & Tire Assembly (Model 16310)	2
2	20-2140	Pivot Arm "A"	2
3	25-7740	Knob Arm	4
4	25-8000	Spring Arm	2
5	5-4460	Pivot Washer	4
6	27-7810	Deflector - Cover Assembly (Incl. Ref. #7, 10 & 34)	1
7	39-5770	Decal - Danger	1
8	22-7350	Decal - Danger	1
9	12-3270	Screw - Special	2
10	20-2640	Hinge Spring	1
11	3256-22	Washer	2

Ref. No.	Part No.	Description	No. Used
12	20-2130	Pivot Arm "B"	2
13	6-7389	Housing (Model 16300)	1
*	6-7399	Housing (Model 16310)	1
14	2410-54	Plug	1
15	22-4960	Rear Shield (Model 16300)	1
*	22-4950	Rear Shield (Model 16310)	1
16	27-6520	Nut Handle Pivot	2
17	27-7070	Latch - Handle (Model 16300)	2
*	27-7080	Latch - Handle (Model 16310)	2
18	27-6510	Spacer - Handle Latch	2
19	32146-6	Nut	4
20	3-2652	Wheel Bolt	4
21	17-4120	Wheel & Tire Assembly	2

\*Not Illustrated

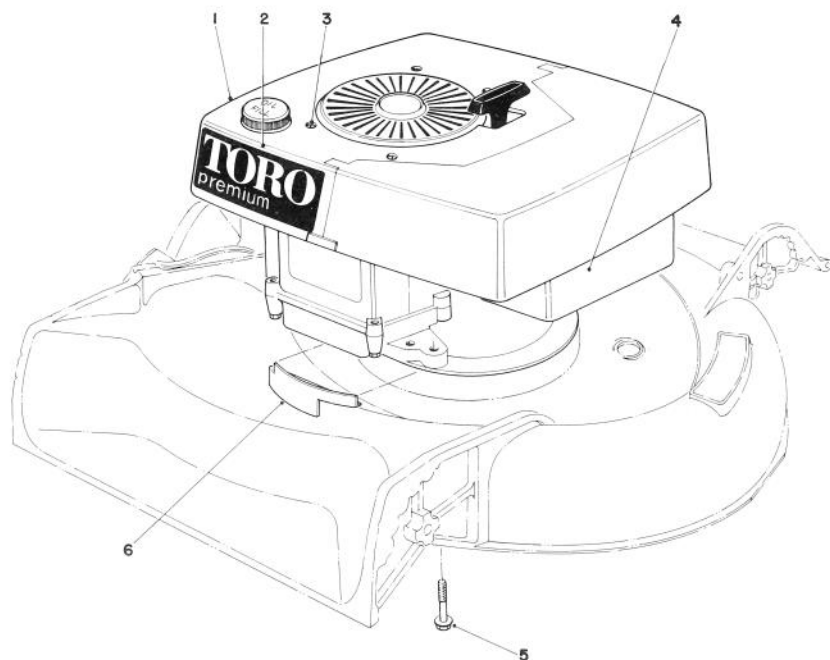


## HOUSING ASSEMBLY (Continued)

Ref. No.	Part No.	Description	No. Used
22	28-8880	Pivot Screw	2
23	27-7240	Spring Arm Assembly (Model 16300)	2
*	25-8000	Spring Arm Assembly (Model 16310)	2
24	33-3200	Rod Shield (Model 16300)	1
*	33-3201	Rod Shield (Model 16310)	1
25	20-2730	Blade (Model 16300)	1
*	20-2720	Blade (Model 16310)	1
26	3-5246	Screw Special	1
27	3253-22	Lockwasher	1

Ref. No.	Part No.	Description	No. Used
28	8-4240	Anti Scalp Cup	1
29	20-2750	Blade Retainer	1
30	27-8590	Square Key	1
31	40-2230	Decal – 19" (Model 16300)	1
*	40-2220	Decal – 21" (Model 16310)	1
32	32146-5	Nut	2
33	25-3440	Pivot Screw	2
34	39-9130	Decal – Caution	1
*	8-9909	Loose Parts	1
*	25-9150	Decal—Replacement Serial Plate	1

\*Not Illustrated

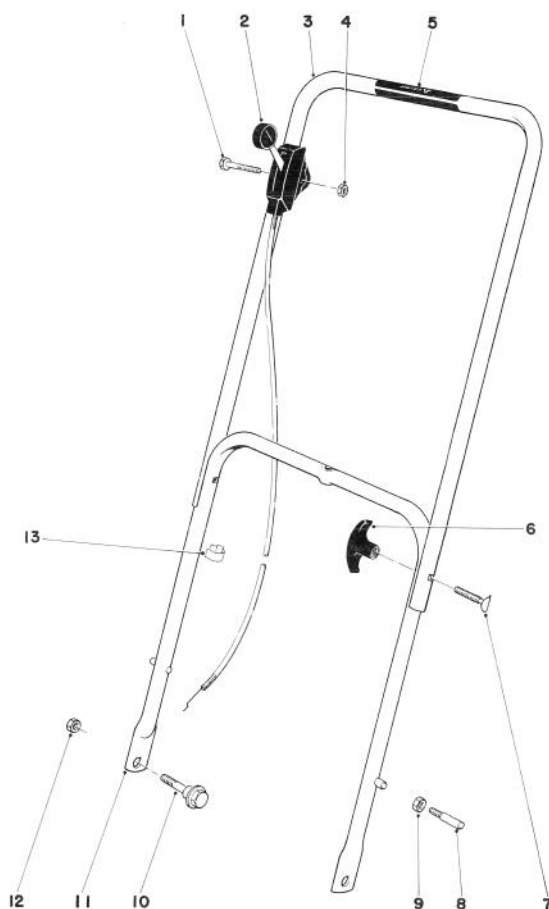


## ENGINE ASSEMBLY

Ref. No.	Part No.	Description	No. Used
1	37-9830	Shroud	1
2	40-2570	Decal — Toro Premium	1
3	32104-94	Screw	4
4	221-607	Engine (Model 16300)	1

Ref. No.	Part No.	Description	No. Used
*	221-608	Engine (Model 16310)	1
5	11-0580	Screw	3
6	27-7470	Cap Housing	1

\*Not Illustrated



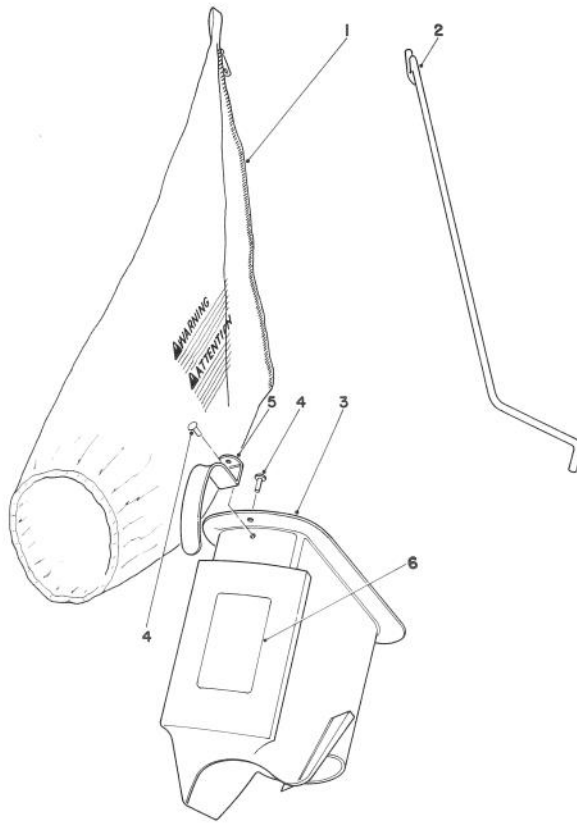
## HANDLE ASSEMBLY

Ref. No.	Part No.	Description	No. Used
1	321-10	Capscrew	1
2	33-2531	Throttle Control	1
3	38-1270	Upper Handle	1
4	32146-17	Locknut	1
5	29-6290	Decal — Danger	1
6	233-41	Handle Knob	2
7	6-6330	Handle Screw	2

Ref. No.	Part No.	Description	No. Used
8†	17-9380	Handle Pin	2
9†	32146-8	Locknut	2
10	27-7210	Shoulder Screw	2
11	38-1290	Lower Handle (Model 16300)	1
*	38-1260	Lower Handle (Model 16310)	1
12	32146-5	Nut	2
13	218-466	Clip	1

\*Not Illustrated

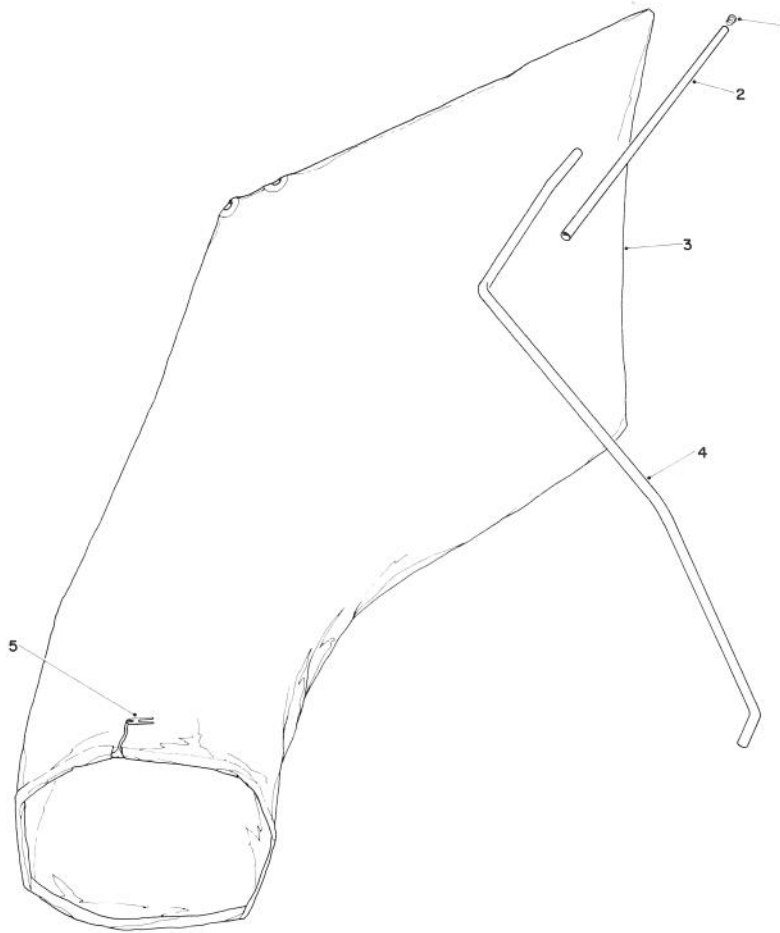
†Service Replacement Parts.



### BAGGING KIT NO. 36-8380 (OPTIONAL)

Ref. No.	Part No.	Description	No. Used
1	6-0929	Grass Bag	1
2	20-4590	Bag Rod	1
3	6-1089	Grass Chute (Incl. Ref. #4 & 5)	1

Ref. No.	Part No.	Description	No. Used
4	3295-26	Rivet	2
5	20-4650	Handle Chute	1
6	36-5230	Decal — Bag Chute	1



## GIANT BAGGING KIT NO. 29-9750 (OPTIONAL)

Ref. No.	Part No.	Description	No. Used
1	2410-29	Cap	1
2	29-7000	Tube 28"	1
*	11-0650	Tube 25"	1

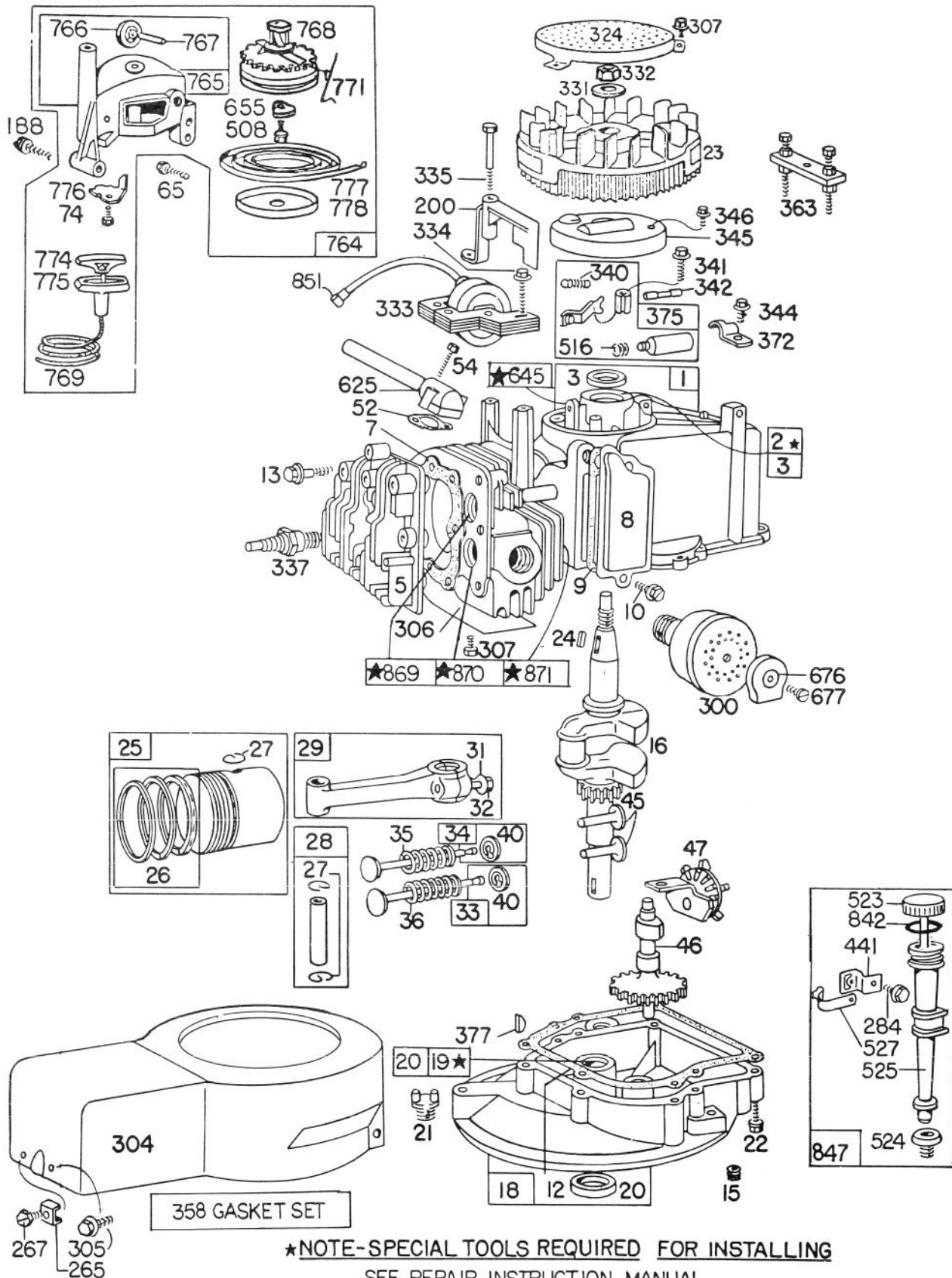
Ref. No.	Part No.	Description	No. Used
3	8-4719	Bag (Incl. Ref. #5)	1
4	22-4820	Hanger Rod	1
5	3-2781	Bag Cord Fasteners	1

\*Not Illustrated



Ref. No.	Part No.	Description	No. Used
190	93440	Screw — Fuel Tank Mtg.	1
201	261027	Link — Governor	1
209	261419	Spring — Governor	1
356	298479	Wire — Ground	1
382	93545	Screw — Choke Link Cover	1
392	261016	Spring — Diaphragm	1
394	299637	Diaphragm — Carburetor	1
396	270571	Gasket — Choke Link Cover	1
397	211678	Cover — Choke Link	1
529	67838	Grommet — Breather	1
534	93374	Screw — Air Cleaner	1
535	270579	Element — Air Cleaner	1
536	390055	Cleaner Assembly — Air	1
617	270344	Seal — Intake Tube	1
620	299974	Plate — Carburetor Control	1
621	297472	Switch — Stop	1
634	270167	Washer — Throttle Shaft (Felt)	1
643	221321	Cup — Air Cleaner	1
674	93447	Screw — Tank to Bracket	1
681	299060	Needle Valve Kit	1

# ENGINE BRIGGS & STRATTON MODEL 92508-1033-01 FOR 19" HAND PROPELLED MODEL 16300





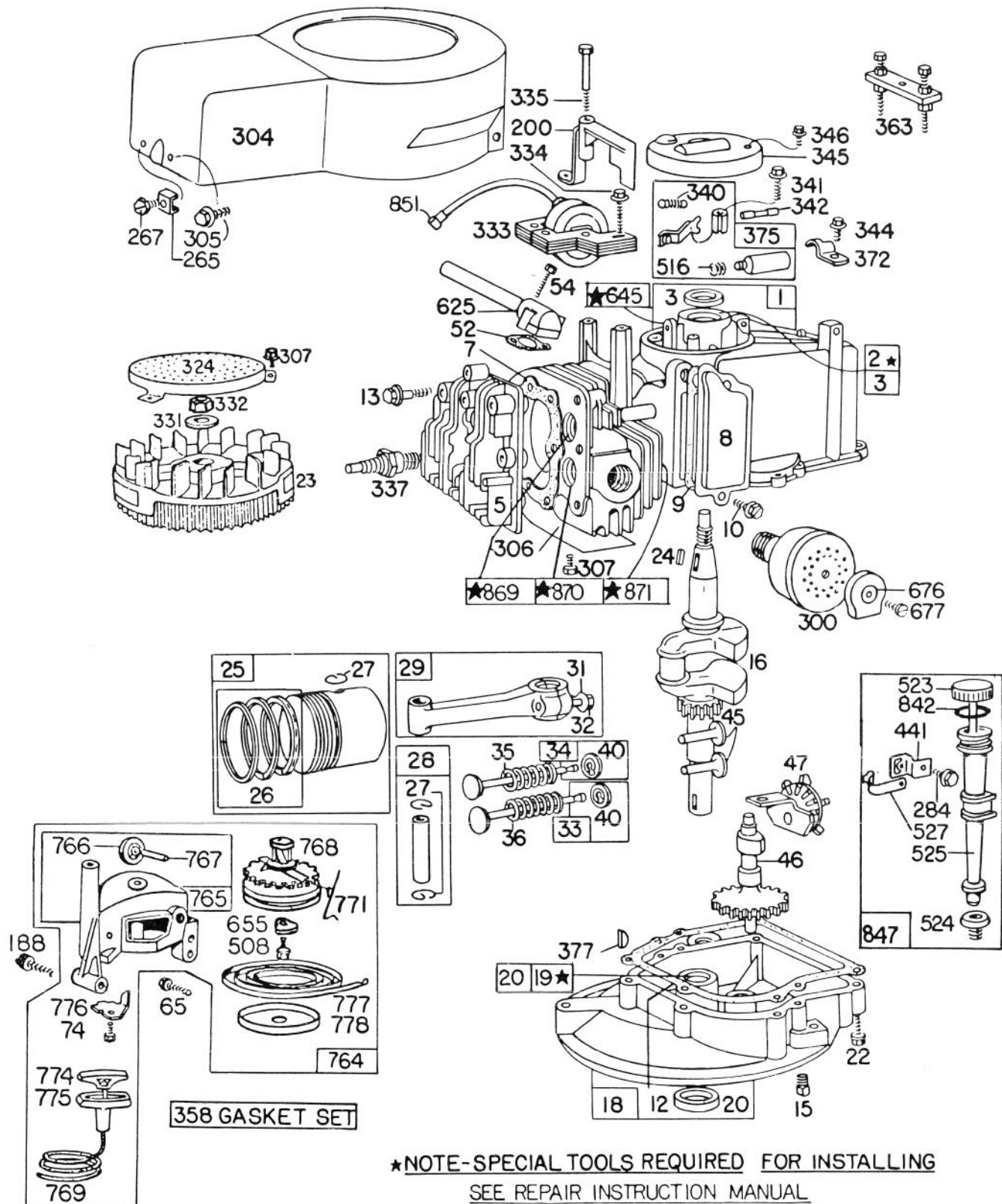
# ENGINE BRIGGS & STRATTON MODEL 92508-1033-01

## FOR 19" HAND PROPELLED MODEL 16300

Ref. No.	Part No.	Description	No. Used	Ref. No.	Part No.	Description	No. Used
1	298988	Cylinder Assembly	1	267	93469	Screw — Clamp Mtg.	1
2	293708	Bushing — Cylinder	1	284	93572	Screw — Clamp Mtg.	1
		<b>Note:</b> Requires special tools for installation.	1	300	391435	Muffler — Exhaust	1
3	299819	Seal — Oil	1	304	390279	Housing — Blower	1
5	211479	Head — Cylinder	1	305	93559	Screw — Blower Housing Mtg.	1
7	270341	Gasket — Cylinder Head	1	306	221805	Shield — Cylinder	1
8	298383	Breather — Valve Chamber	1	307	93490	Screw — Cylinder Shield and Rotating Screen Mtg.	1
9	*270239	Gasket — Valve Cover	1	324	222063	Screw — Rotating	1
10	93394	Screw — Breather and P.T.O. Gear Sump Cover Mtg. (Ref. #86)	1	331	220865	Washer — Flywheel	1
12	*270833	Gasket — Crankcase — .015" thick (Standard)	1	332	92284	Nut — Flywheel	1
	*270895	Gasket — Crankcase — .005" thick	1	333	298502	Armature — Magneto	1
	*270896	Gasket — Crankcase — .009" thick	1	334	93381	Screw — Armature Mtg.	1
13	93111	Screw — Cylinder Head	1	335	93435	Screw — Armature and Governor Blade Mtg.	1
15	93418	Plug — Oil Drain (Socket Head)	1	337	293918	Plug — Spark (with Gasket)	1
16	261293	Crankshaft	1	340	26018	Spring — Breaker Arm	1
18	390810	Sump — Oil	1	341	93381	Screw — Breaker Arm Mtg.	1
19	293709	Bushing — Oil Sump	1	342	65704	Plunger — Breaker Point	1
		<b>Note:</b> Requires special tool for installation.	1	344	93042	Screw — Condenser Clamp Mtg.	1
20	391483	Seal — Oil	1	345	220366	Cover — Breaker Point and Condenser	1
21	66768	Plug — Oil Filler (Used on Type -01 Only)	1	346	93705	Screw — Dust Cover Mtg.	1
22	93032	Screw — Sump Mtg.	1	358	298989	Gasket Set	1
23	299982	Flywheel — Magneto	1	363	19069	Puller — Flywheel (Optional Accessory)	1
24	61760	Key — Flywheel	1	372	220477	Clamp — Condenser	1
25	298904	Piston Assy. — Standard	1	375	294628	Breaker Points and Condenser Set <b>Note:</b> 299061 Ignition Kit Includes: 294628 Point Set, 65704 Plunger, 61760 Key — Flywheel	1
	298905	Piston Assy. — .010" O.S.	1	377	93065	Key — Woodruff No. 6	1
	298906	Piston Assy. — .020" O.S.	1	441	222530	Bracket — Oil Fill Tube	1
	298907	Piston Assy. — .030" O.S.	1	508	93158	Screw	1
		<b>RING SETS:</b>		516	260374	Spring — Connector (Condenser Post)	1
		<b>Note:</b> For Chrome Piston Ring Set — standard size — order Part No. 299742.	1	523	391838	Cap with Dipstick — Oil Filler	1
26	298982	Ring Set — Standard Piston	1	524	68838	Seal — Filler Tube	1
	298983	Ring Set — .010" O.S. Piston	1	525	280131	Tube — Oil Filler	1
	298984	Ring Set — .020" O.S. Piston	1	527	222548	Clamp — Oil Filler Tube	1
	298985	Ring Set — .030" O.S. Piston	1	625	298775	Tube — Fuel Intake	1
27	26026	Lock — Piston Pin	1	645	23513	Bushing — Plunger	1
28	298909	Pin Assy. — Piston — Standard	1	655	222057	Anchor — Spring	1
	298908	Pin Assy. — Piston — .005" O.S.	1	676	222522	Deflector — Muffler	1
29	294201	Rod Assy. — Connecting	1	677	93705	Screw — Muffler Deflector	1
		<b>Note:</b> For Connecting Rod with .020" undersize Crankpin Bore — order No. 296079	1	764	299946	Starter Assy. — Vertical Pull	1
31	220756	Lock — Conn. Rod Screw	1	765	299947	Housing — Vertical Pull Starter	1
32	92296	Screw — Connecting Rod	1	766	280022	Pulley — Rope (small)	1
33	296676	Valve — Exhaust	1	767	231048	Pin — Small Rope Pulley (7/16" long)	1
34	296677	Valve — Intake	1	768	299948	Pulley and Gear Assy.	1
35	260552	Spring — Intake Valve	1	769	66734	Rope — Vertical Pull Starter	1
36	26478	Spring — Exhaust Valve	1	771	299961	Clip — Vertical Pull Starter	1
40	93312	Retainer — Valve Spring	1	774	280121	Insert — Starter Handle	1
45	230173	Tappet — Valve	1	775	280036	Grip — Starter Rope	1
46	210453	Gear — Cam	1	776	222049	Guide — Rope	1
47	294652	Oil Slinger Gear and Bracket	1	777	390066	Spring — Vertical Pull Starter	1
52	*270345	Gasket — Intake Elbow	1	778	280021	Cover — Vertical Pull Starter	1
54	93485	Screw — Intake Elbow Mtg.	1			Cover	1
65	93587	Screw — Vertical Pull Starter Mtg.	1	842	270920	Seal — Oil Filler Cap	1
74	93490	Screw	1	847	392055	Tube Assy. — Oil Fill (Used on Type -02 only)	1
188	93585	Screw — Fuel Tank and Starter Mtg.	1	851	221798	Terminal — Ignition Cable	1
200	68388	Blade — Governor	1	869	210879	Seat — Intake Valve (Standard)	1
265	22372	Clamp — Casing	1	870	211291	Seat — Exhaust Valve (Standard)	1
				871	63709	Guide — Exhaust Valve	1

\*Included in Gasket Set — Part No. 298989.

**ENGINE BRIGGS & STRATTON MODEL 92908-2053-01**  
**ENGINE BRIGGS & STRATTON MODEL 93508-0195-01**  
**FOR 21" HAND PROPELLED MODEL 16310**



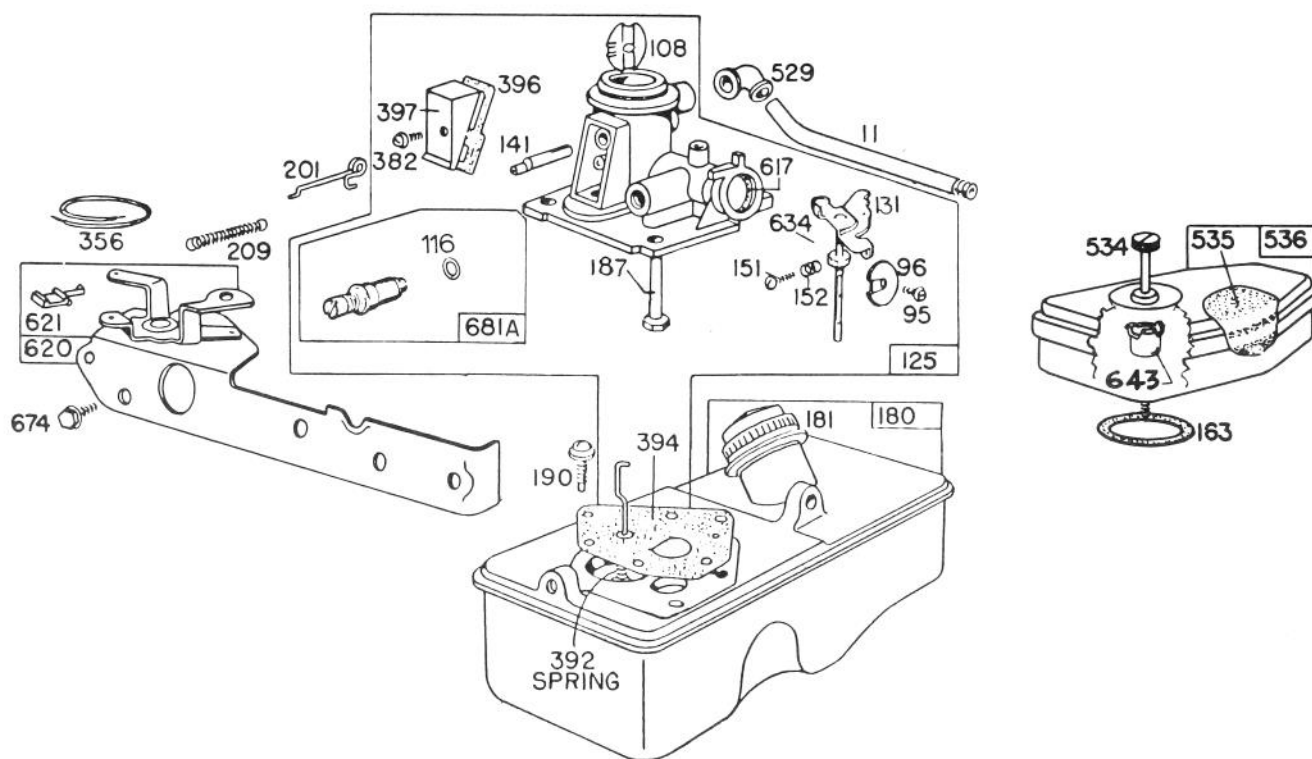
**ENGINE BRIGGS & STRATTON MODEL 92908-2053-01**  
**ENGINE BRIGGS & STRATTON MODEL 93508-0195-01**  
**FOR 21" HAND PROPELLED MODEL 16310**

Ref. No.	Part No.	Description	No. Used	Ref. No.	Part No.	Description	No. Used
1	298988	Cylinder Assembly	1	300	391435	Muffler — Exhaust	1
2	293708	Bushing — Cylinder		304	299983	Housing — Blower	1
		<b>Note:</b> Requires special tools for installation.	1	305	93559	Screw — Blower Housing Mtg.	
3	299819	Seal — Oil	1	306	221805	Shield — Cylinder	1
5	211479	Head — Cylinder	1	307	93490	Screw — Cylinder Shield and Rotating Screen Mtg.	1
7	*270341	Gasket — Cylinder Head	1	324	222063	Screen — Rotating	1
8	298383	Breather — Valve Chamber	1	331	220865	Washer — Flywheel	1
9	*270239	Gasket — Valve Cover	1	332	92284	Nut — Flywheel	1
10	93394	Screw — Breather	1	333	298502	Armature — Magneto	1
12	*270833	Gasket — Crankcase — .015" thick (Standard)	1	334	93381	Screw — Armature Mtg.	1
	*270895	Gasket — Crankcase — .005" thick	1	335	93435	Screw — Armature and Governor Blade Mtg.	1
	*270896	Gasket — Crankcase — .009" thick	1	337	293918	Plug — Spark (with Gasket) (Resistor Type) 1-1/2" high	
13	93111	Screw — Cylinder Head				<b>Note:</b> Spark Plugs use Ignition Cable Terminal No. 221798	1
15	91084	Plug — Oil Drain (Square Head)	1	340	26018	Spring — Breaker Arm	1
16	261293	Crankshaft	1	341	93381	Screw — Breaker Arm Mtg.	1
18	390810	Sump — Oil	1	342	65704	Plunger — Breaker Point	1
19	293709	Bushing — Oil Sump		344	93042	Screw — Condenser Clamp Mtg.	1
		<b>Note:</b> Requires special tools for installation.	1	345	220366	Cover — Breaker Point and Condenser	1
20	291841	Seal — Oil	1	346	93705	Screw — Dust Cover Mtg.	1
22	93032	Screw — Sump Mtg.	1	358	298989	Gasket Set	1
23	299982	Flywheel — Magneto	1	363	19069	Puller — Flywheel (Optional Accessory)	1
24	61760	Key — Flywheel	1	372	220477	Clamp — Condenser	1
25	298904	Piston Assy. — Standard	1	375	294628	Breaker Points and Condenser Set	
	298905	Piston Assy. — .010" O.S.	1			<b>Note:</b> 299061 Ignition Kit Includes: 294628 Point Set, 65704 Plunger, 61760 Key — Flywheel	1
	298906	Piston Assy. — .020" O.S.	1	377	93065	Key — Woodruff No. 6	1
	298907	Piston Assy. — .030" O.S.	1	441	222530	Bracket — Oil Fill Tube	1
		<b>PISTON RING SETS:</b>		508	93158	Screw	1
		<b>Note:</b> For Chrome Piston Ring Set — standard size — order Part No. 299742		516	260374	Spring — Connector (Condenser Post)	1
26	298982	Ring Set — Standard Piston	1	523	391838	Cap with Dipstick — Oil Filler	1
	298983	Ring Set — .010" O.S. Piston	1	524	68838	Seal — Filler Tube	1
	298984	Ring Set — .020" O.S. Piston	1	525	280131	Tube — Oil Filler	1
	298985	Ring Set — .030" O.S. Piston	1	527	222548	Clamp — Oil Filler Tube	1
27	26026	Lock — Piston Pin	1	625	298775	Tube — Fuel Intake	1
28	298909	Pin Assy. — Piston — Standard	1	645	23513	Bushing — Plunger	1
	298908	Pin Assy. — Piston — .005" O.S.	1	655	222057	Anchor — Spring	1
29	294201	Rod Assy. — Connecting		676	222522	Deflector — Muffler	1
		<b>Note:</b> For Connecting Rod with .020" undersize Crankpin Bore — order No. 296079.	1	677	93705	Screw — Muffler Deflector	1
31	220756	Lock — Conn. Rod Screw	1	764	391486	Starter Assy. — Vertical Pull	1
32	92296	Screw — Connecting Rod	1	765	299947	Housing — Vertical Pull Starter	1
33	296676	Valve — Exhaust	1	766	280022	Pulley — Rope (small)	1
34	296677	Valve — Intake	1	767	231048	Pin — Small Rope Pulley (7/16" long)	1
35	260552	Spring — Intake Valve	1	768	299948	Pulley and Gear Assy. — Starter	1
36	26478	Spring — Exhaust Valve	1	769	66734	Rope — Vertical Pull Starter	1
40	93312	Retainer — Valve Spring used w/valves w/groove in stem	1	771	299961	Clip — Vertical Pull Starter	1
45	230173	Tappet — Valve	1	774	280121	Insert — Starter Handle	1
46	210453	Gear — Cam	1	775	280036	Grip — Starter Rope	1
47	294652	Oil Slinger Gear and Bracket	1	776	222049	Guide — Rope	1
52	*270345	Gasket — Intake Elbow	1	777	390066	Spring — Vertical Pull Starter	1
54	93485	Screw — Intake Elbow Mtg.	1	778	280021	Cover — Vert. Pull Starter Pulley	1
65	93587	Screw — Vert. Pull Starter Mtg.	1	842	270920	Seal — Oil Filler Cap	1
74	93490	Screw	1	847	392055	Tube Assy. — Oil Fill	1
188	93585	Screw — Fuel Tank and Starter Mtg.	1	851	221798	Terminal — Ignition Cable	1
200	68388	Blade — Governor	1	869	210879	Seat — Intake Valve (Standard)	1
265	22372	Clamp — Casing	1	870	210879	Seat — Exhaust Valve (Std.)	1
267	93469	Screw — Clamp Mtg.	1	871	63709	Guide — Exhaust Valve	1
284	93572	Screw — Clamp Mtg.	1				

\*Included in Gasket Set — Part No. 298989.



Ref. No.	Part No.	Description	No. Used
209	261419	Spring — Governor	1
356	298479	Wire — Ground	1
382	93545	Screw — Choke Link Cover	1
390	261015	Spring — Diaphragm	1
392	260455	Spring — Fuel Pump Diaphragm	1
394	391681	Diaphragm — Carburetor	1
396	270571	Gasket — Choke Link Cover	1
397	211678	Cover — Choke Link	1
432	221377	Cap — Spring	1
529	67838	Grommet — Breather	1
534	93374	Screw — Air Cleaner	1
535	270579	Element — Air Cleaner	1
536	390055	Cleaner Assembly — Air	1
611	297219	Pipe — Fuel (long)	1
612	296811	Pipe — Fuel (short)	1
617	270344	Seal — Fuel Intake Tube	1
620	299974	Plate — Carburetor Control	1
621	297472	Switch — Stop	1
634	270167	Washer — Throttle Shaft (Felt)	1
643	221321	Cup — Air Cleaner	1
674	93447	Screw — Tank to Bracket	1
681	299060	Needle Valve Kit	1



## BRIGGS & STRATTON CARBURETOR ASSEMBLY MODEL 93508-0195-01 FOR 21" HAND PROPELLED MODEL 16310

Ref. No.	Part No.	Description	No. Used
11	230802	Tube — Breather	1
95	93499	Screw — Throttle Valve Mounting	1
96	211203	Valve — Throttle	1
108	280178	Valve — Choke	1
116	280203	Seal — O-Ring	1
125	394591	Carburetor Assembly	1
131	394588	Shaft and Lever Throttle	1
141	68908	Shaft — Choke	1
151	93524	Screw — Machine Rd. Hd.	1
152	260746	Spring — Throttle Adj.	1
163	270816	Gasket — Air Cleaner Mtg.	1
180	393113	Tank Assembly — Fuel	1
181	298425	Cap — Fuel Tank	1
187	393001	Pipe — Fuel	1
190	93440	Screw — Fuel Tank Mounting	1
201	260878	Link — Governor	1
209	260875	Spring — Governor For 3400 to 3600 RPM Top Speed Set-No Load	1

Ref. No.	Part No.	Description	No. Used
356	298479	Wire — Ground	1
382	93864	Screw — Choke Link Cover	1
392	261016	Spring — Diaphragm	1
394	299637	Diaphragm — Carburetor	1
396	270571	Gasket — Choke Link Cover	1
397	211678	Cover — Choke Link	1
529	67838	Grommet — Breather	1
534	93374	Screw — Air Cleaner	1
535	270579	Element — Air Cleaner	1
536	390055	Cleaner Assembly — Air	1
617	270344	Seal — Intake Tube	1
620	299974	Plate — Carburetor Control	1
621	297472	Switch — Stop	1
634	270167	Washer — Throttle Shaft (Felt)	1
643	221321	Cup — Air Cleaner	1
674	93158	Screw — Tank to Bracket	1
681A	393451	Needle Valve Kit	1



# IDENTIFICATION AND ORDERING

## MODEL AND SERIAL NUMBERS

The Mower has two identification numbers: a model number and a serial number. The two numbers are stamped on a decal which is located on the mower housing between the rear wheels. In any correspondence concerning the mower, supply model and serial numbers to assure that correct information and replacement parts are obtained.

To order replacement parts from an Authorized TORO Service Dealer, supply the following information:

1. Model and serial numbers of the mower.
2. Part number, description, and quantity of part(s) desired.

**Note:** Do not order by reference number if a parts catalog is being used; use the PART NUMBER.

## The Toro Promise

### A ONE YEAR LIMITED WARRANTY

*The Toro Company promises to repair your TORO Product if defective in materials or workmanship. The following time periods from the date of purchase apply:*

Residential Product . . . . .	1 Year
Residential Products Used Commercially . . . . .	45 Days

*The costs of parts and labor are included, but the customer pays the transportation costs. Just return any residential product to an Authorized TORO Service Dealer or TORO Distributor.*

Should you feel your TORO Product is defective and wish to rely on The Toro Promise, the following procedure is recommended:

1. Contact any Authorized TORO Service Dealer, TORO Master Service Dealer, or TORO Distributor (the Yellow Pages of your telephone directory is a good reference source).
2. He will either instruct you to return the product to him or recommend another Authorized TORO Service outlet which might be more convenient.
3. Bring the product along with your original sales slip, or other evidence of purchase date, to the service dealer.
4. The servicing dealer will inspect the unit, advise you whether the product is defective and, if so, make all repairs necessary to correct the defect without extra charge to you.

If for any reason you are dissatisfied with the dealer's analysis of the defect or the service performed, you may contact us.

Write:

TORO Consumer Service Department  
8111 Lyndale Avenue South  
Minneapolis, Minnesota 55420

The above remedy of product defects through repair by an Authorized TORO Service Dealer is the purchaser's sole remedy for any defect.

THERE IS NO OTHER EXPRESS WARRANTY. ALL IMPLIED WARRANTIES OF MERCHANTABILITY AND

FITNESS FOR USE ARE LIMITED TO THE DURATION OF THE EXPRESS WARRANTY.

Some states do not allow limitations on how long an implied warranty lasts, so the above limitation may not apply to you.

This warranty applies only to parts or components which are defective and does not cover repairs necessary due to normal wear, misuse, accidents, or lack of proper maintenance. Regular, routine maintenance of the unit to keep it in proper operating condition is the responsibility of the owner.

All warranty repairs reimbursable under The Toro Promise must be performed by an Authorized TORO Service Dealer using Toro approved replacement parts.

Repairs or attempted repairs by anyone other than an Authorized TORO Service Account are not reimbursable under The Toro Promise. In addition, these unauthorized repair attempts may result in additional malfunctions, the correction of which is not covered by warranty.

THE TORO COMPANY IS NOT LIABLE FOR INDIRECT, INCIDENTAL OR CONSEQUENTIAL DAMAGES IN CONNECTION WITH THE USE OF THE PRODUCT INCLUDING ANY COST OR EXPENSE OF PROVIDING SUBSTITUTE EQUIPMENT OR SERVICE DURING PERIODS OF MALFUNCTION OR NON-USE.

Some states do not allow the exclusion or limitation of incidental or consequential damages, so the above limitation or exclusion may not apply to you.

This warranty gives you specific legal rights, and you may also have other rights which vary from state to state.

## COUNTRIES OTHER THAN THE UNITED STATES OR CANADA

Customers who have purchased TORO products exported from the United States or Canada should contact their TORO Distributor (Dealer) to obtain guarantee policies for your country, province or state. If for any reason

you are dissatisfied with your Distributor's service or have difficulty obtaining guarantee information, contact the TORO importer. If all other remedies fail, you may contact us at The Toro Company.

## MAINTENANCE RECORD

[illegible]

[illegible]