



# Rail Ramp Conversion Kit

## For Trans Pro 100

Model No. 04246

Form No. 3328-621

### Installation Instructions

1. Secure tube assembly mounting brackets to square holes in each side of trailer with (4) carriage bolts, flat washers and locknuts (Fig. 1). Position tube assemblies so small cross tubes are to the rear.

**Note:** On trailers with serial numbers prior to 220000001, all tube assembly mounting holes are not in sides of trailer and will have to mounted as follows:

- Secure upper rear hole in tube assembly mounting bracket to top rear square hole in side of trailer.
- Position tube assembly so it is parallel to top of trailer.

- Using tube assembly mounting brackets as templates, locate, mark and drill (3) .390" dia. holes in side of trailer.
  - Secure tube assembly mounting brackets to side of trailer with (3) 3/8-16 x 3/4" capscrews (in place of carriage bolts), flat washers and locknuts.
  - Repeat procedure on opposite side of trailer.
2. Mount a load ramp to the rear of each tube assembly with a 3/6-16 x 2-1/2" lg. capscrow, spacer, washer and locknut (Fig. 1).

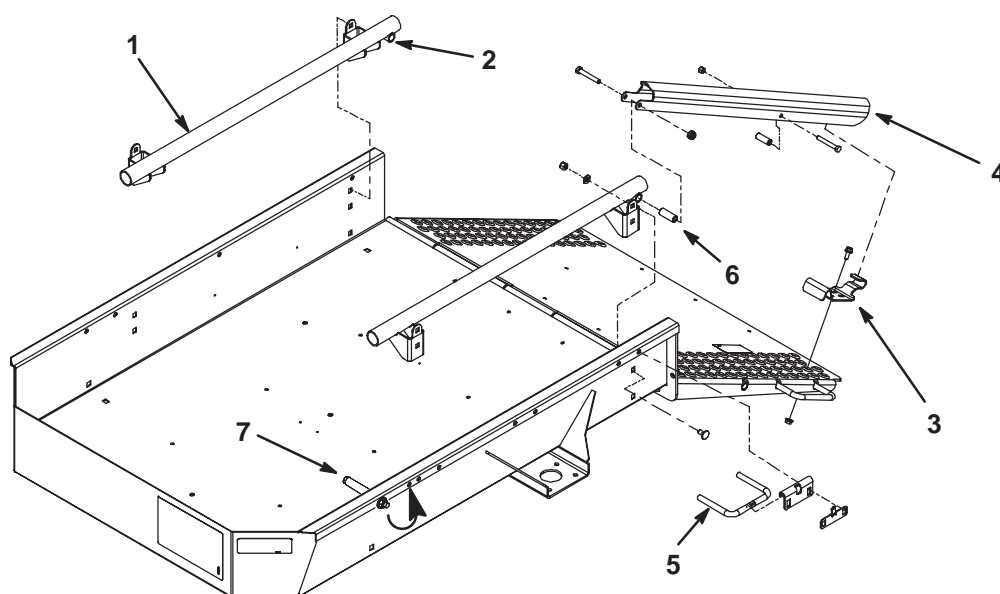


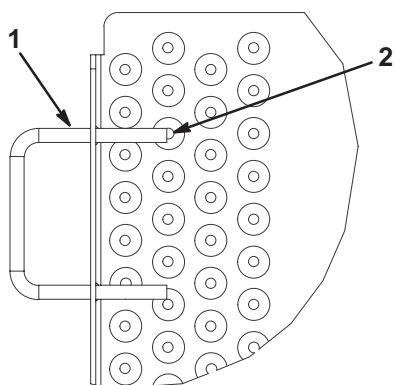
Figure 1

- |                  |                    |              |                 |
|------------------|--------------------|--------------|-----------------|
| 1. Tube assembly | 3. Locking bracket | 5. Wheel rod | 7. Trailer stop |
| 2. Cross tube    | 4. Load ramp       | 6. Spacer    |                 |

3. Position a locking bracket onto each side of ramp so they align with underside of load ramps, engage with coated pins in load ramps and aligns with holes in ramp (Fig. 1 & 3). Only one set of mounting holes is used per locking bracket.

4. Loosely mount each locking bracket to ramp with 5/16-18 x 3/4" lg. flange head screws and flange nuts (Fig. 1 & 3).

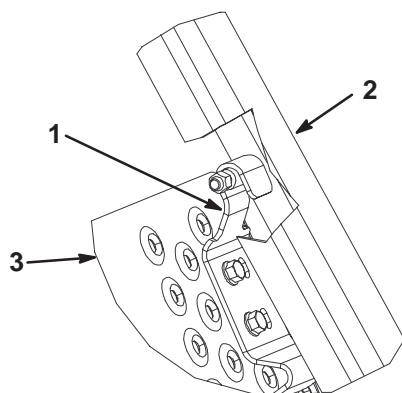
**Note:** If ramp handle interferes with mounting fastener of locking bracket, grind off end of handle to expose hole, as required (Fig. 2). Touch up paint.



**Figure 2**

1. Ramp handle                      2. Grind here

5. Raise and lock ramp. Adjust locking brackets so they are engaged on pins and tighten flange screws and nuts (Fig. 1 & 3).



**Figure 3**

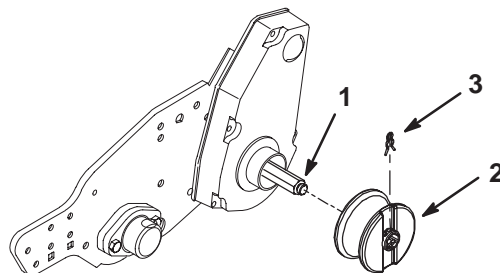
1. Locking bracket                      3. Ramp  
2. Load ramps

6. Remove fasteners securing trailer stops to each side of trailer and move backward to next set of holes and re-install (Fig. 1).  
7. Remove existing wheel rods and brackets from each side of trailer (Fig. 1).  
8. Mount new smaller wheel rods to front and rear sets of mounting holes in each side of trailer, using brackets and fasteners removed (Fig. 1).

**Note:** On trailers with serial numbers prior to 220000001, (2) new rod brackets, part no. 105-5395 and (2) new retaining clips, part no. 99-6204 must be purchased to replace existing components on trailer.

**Note:** When trailering only one greensmower, mount wheel rods to middle set of mounting holes in trailer.

9. Remove existing standard transport wheels from wheel shafts on greensmower (if so equipped).



**Figure 4**

1. Wheel shaft (L.H. shown)                      3. Wheel clip  
2. Wheel

10. Insert a wheel onto each shaft and secure with a wheel clip (Fig. 4).