



Rail Ramp Conversion Kit

Trans Pro 100 Tow Behind Trailer

Model No. 04246

Parts Catalog

Ordering Replacement Parts

To order replacement parts, please supply: the part number, the quantity, and the description of each part desired.

Understanding Reference Numbers

Each identified part in an illustration has a reference number. The reference number for a part also appears in the parts list, along with other information about the part.

This catalog uses two special reference number formats, one to indicate parts in a service assembly and another to indicate the quantity of a given part in an illustration.

Service Assembly Reference Numbers

Parts in service assemblies have reference numbers in the form **a:b**. The **a** represents the reference number of the entire service assembly and the **b** represents a sequential number unique to each part within the service assembly.

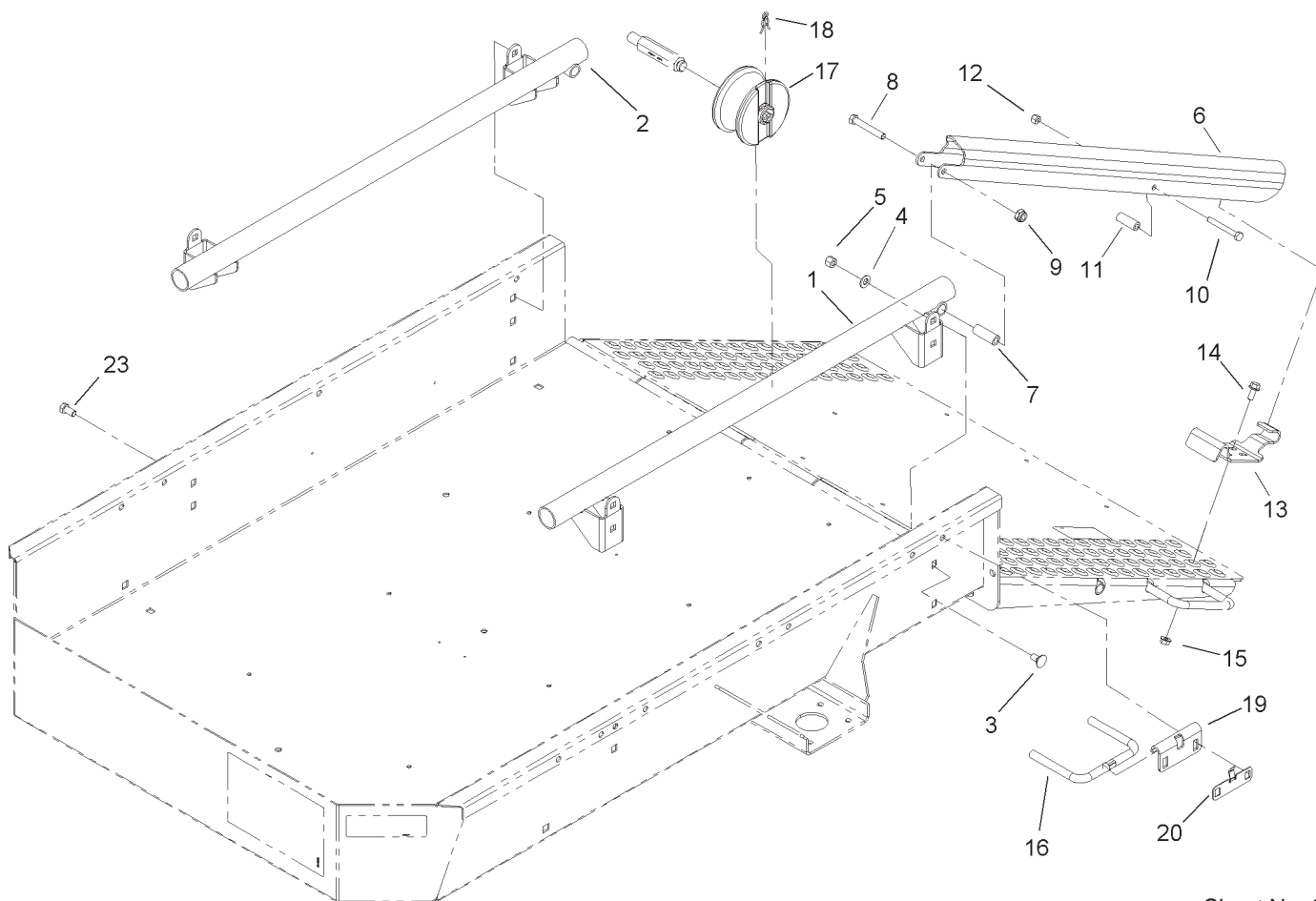
For example, a wheel assembly might be identified by reference number **6**, the tire by **6:1**, the valve by **6:2**, and the wheel by **6:3**. When you order the assembly identified by reference number **6**, you receive all parts identified by reference numbers **6:1**, **6:2**, and **6:3**. However, you may also order any part individually.

Reference numbers of this type appear in illustrations and in part lists.

Reference Numbers Indicating Quantity

In an illustration, if a reference number indicates more than one part, the reference number has the form **nX y**. The **n** represents the quantity of the part, the **X** is the multiplication symbol, and the **y** represents the reference number.

For example, in an illustration, the reference number **2X 37** means that two of the parts identified by reference number **37** are indicated.



Sheet No.:0

Rail Ramp Conversion Kit Assembly

Ref. No.	Part No.	Qty.	Description
1	106-5313-01	1	LH Tube ASM
2	106-5314-01	1	RH Tube ASM
3	3231-1	8	Screw-CARR
4	3256-24	8	Washer-Flat
5	3296-39	8	Nut-Lock, NI
6	106-5316-01	2	Bracket-Ramp
7	95-6448	2	Spacer
8	323-12	2	Screw-HH
9	3296-44	2	Nut-Lock, NI
10	322-12	2	Screw-HH
11	106-5317	2	Hose-Fuel
12	3296-29	2	Nut-Lock, NI
13	106-5315	2	Bracket-Lock
14	3234-5	4	Screw
15	32128-25	4	Nut-Flange
16	105-5393	4	Rod-T railer, Small
17	106-5353	4	Wheel ASM
18	99-6204	4	Clip-Retaining
19	105-5395	1	Bracket-Rod
20	106-5354	1	Spring-Latch
23	323-4	6	Screw-HH

Ref. No.	Part No.	Qty.	Description