



Multi-Pro[®] 1250 Turf Sprayer

Model No. 41106—230000001 and Up

Parts Catalog

Ordering Replacement Parts

To order replacement parts, please supply: the part number, the quantity, and the description of each part desired.

Understanding Reference Numbers

Each identified part in an illustration has a reference number. The reference number for a part also appears in the parts list, along with other information about the part.

This catalog uses two special reference number formats, one to indicate parts in a service assembly and another to indicate the quantity of a given part in an illustration.

Service Assembly Reference Numbers

Parts in service assemblies have reference numbers in the form **a:b**. The **a** represents the reference number of the entire service assembly and the **b** represents a sequential number unique to each part within the service assembly.

For example, a wheel assembly might be identified by reference number **6**, the tire by **6:1**, the valve by **6:2**, and the wheel by **6:3**. When you order the assembly identified by reference number **6**, you receive all parts identified by reference numbers **6:1**, **6:2**, and **6:3**. However, you may also order any part individually.

Reference numbers of this type appear in illustrations and in part lists.

Reference Numbers Indicating Quantity

In an illustration, if a reference number indicates more than one part, the reference number has the form **nX y**. The **n** represents the quantity of the part, the **X** is the multiplication symbol, and the **y** represents the reference number.

For example, in an illustration, the reference number **2X 37** means that two of the parts identified by reference number **37** are indicated.

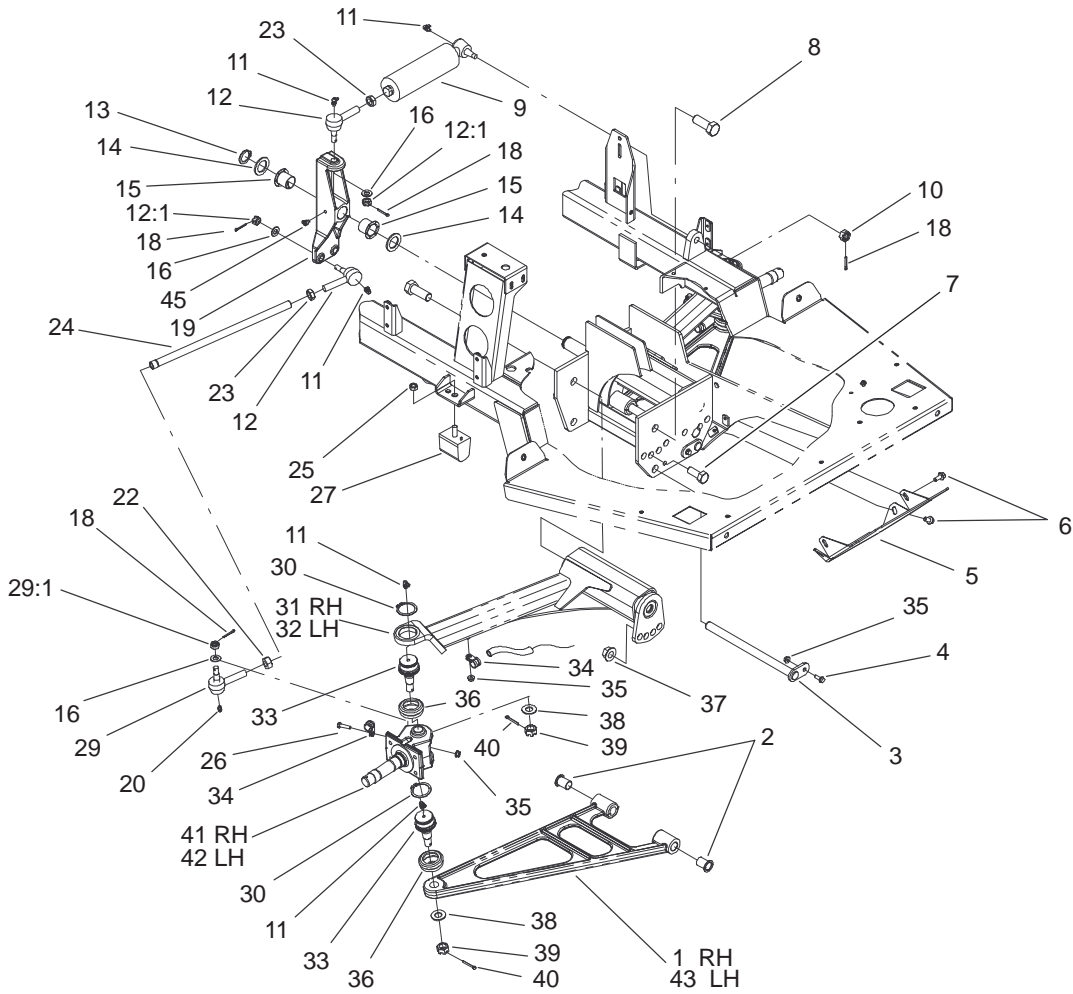
Contents

Description	Page	Description	Page
Front Suspension Assembly	4	Spray Controls	44
Steering Cylinder Assembly No. 100–8278	5	Spray System	46
Engine Cover Assembly	6	Transaxle Case Assembly	
Seat Support Assembly	8	Transaxle Assembly No. 104–9078	48
Brake and Accelerator Pedal Assembly	9	Transaxle Gear Shaft Assembly	
Master Cylinder Assembly No. 94–3800	10	Transaxle Assembly No. 104–9078	49
Rear Fender and Battery Mount Assembly	11	Countershaft Assembly	
Right Hand Boom Mount Asm No. 106–4960 ..	12	Transaxle Assembly No. 104–9078	50
Left Hand Boom Mount Assembly No. 106–4961	13	Shift Fork Assembly	
Fresh Water Tank Assembly	14	Transaxle Assembly No. 104–9078	51
Fresh Water Tank Assembly No. 100–8438 ...	15	Differential Gear Assembly	
Shifter Assembly	16	Transaxle No. 104–9078	52
Parking Brake and Console Assembly	17	Vehicle Electrical Schematic	53
Front Wheel Assembly	18	Vehicle Hydraulic Schematic	54
Front Brake Assembly No. 100–8285	19	Spray System Electrical Schematic	55
Transaxle Installation Assembly	20	Spray System Flow Diagram	56
Rear Wheel Assembly	21	Crankshaft Assembly	
Rear Brake Assembly No. 93–7125 (Right)		Kohler CH20S–64647	57
and 93–7126 (Left)	22	Crankcase Assembly	
Driveshaft Assembly No. 98–2918	23	Kohler CH20S–64647	58
Engine Installation Assembly	24	Oil Pan / Lubrication Assembly	
Gearbox Assembly No. 99–0663	26	Kohler CH20S–64647	59
Drive Pulley Assembly No. 100–8289	27	Head / Valve / Breather Assembly	
Steering Pump Assembly No. 100–8302	28	Kohler CH20S–64647	60
Driver Clutch Assembly No. 100–8288	29	Ignition / Electrical Assembly	
Pump Installation Assembly	30	Kohler CH20S–64647	61
Hydraulic Brake Line Assembly	31	Blower Housing and Baffle Assembly	
Tank and Saddle Assembly	32	Kohler CH20S–64647	62
Spray Tank Assembly No. 104–9020	33	Starting System	
Spray Tank Lid Assembly No. 94–7088	34	Kohler CH20S–64647	63
Throttle Linkage Assembly	35	Fuel System Assembly	
Exhaust Assembly	36	Kohler CH20S–64647	64
Electrical Panel Assembly	37	Engine Controls	
Hydraulic Hose Routing Assembly	38	Kohler CH20S–64647	65
Steering Control Assembly No. 92–3502	39	Air Intake / Filtration Assembly	
Pump Assembly No. 104–9170	40	Kohler CH20S–64647	66
Tank and Saddle Assembly	42	Exhaust Assembly	
		Kohler CH20S–64647	67

Part Description Abbreviations

Part descriptions in this catalog may include the following abbreviations.

Abbreviation	Meaning	Abbreviation	Meaning
AR	as required	HYD	hydraulic
ASM	assembly	INC	incorporated
CARR	carriage	LH	left hand
DEG	degrees	NI	nylon insert
FH	flat head	PPH	Phillips pan head
GA	gauge	PTH	Phillips truss head
HF	hex flange	PTO	power take off
HH	hex head	RH	right hand
HHF	hex head flange	SFH	slotted fillister head
HLH	hex lag head	SHH	slotted hex head
HJ	hex jam	SQH	square head
HOC	height-of-cut	SHWH	slotted hex washer head
HS	hex socket	SPH	slotted pan head
HSBH	hex socket button head	SRH	slotted round head
HSFH	hex socket flat head	STD	standard
HSH	hex socket head	TAP	self tapping
HWH	hex washer head	TTH	Torx truss head
HWHTF	hex washer head thread forming	WH	wing head

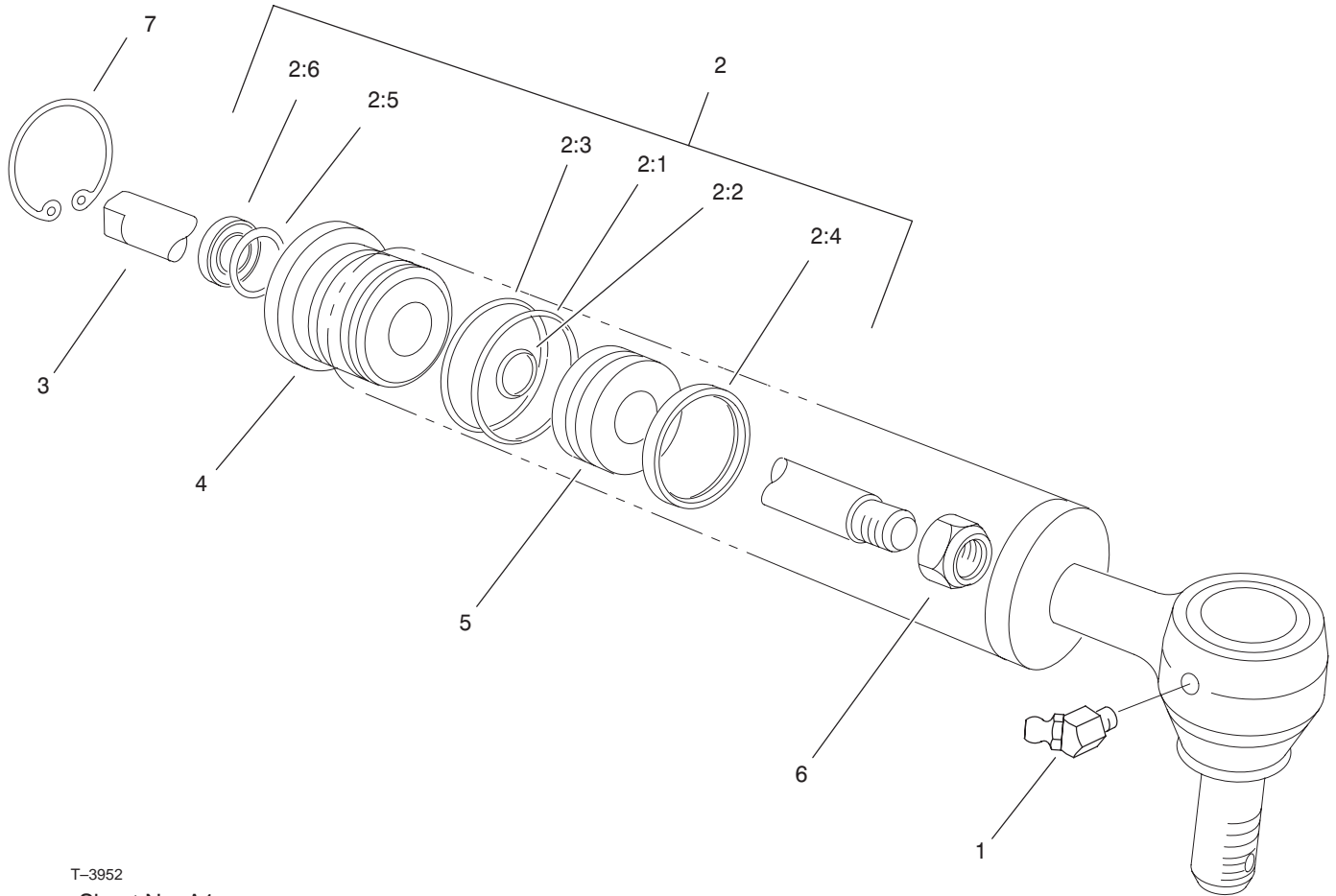


Sheet No.:2

Front Suspension Assembly

Ref. No.	Part No.	Qty.	Description
1	100-6744-03	1	RH A-Arm ASM
2	100-8541	4	Bushing-A-Arm
3	100-8544	2	Pivot Pin ASM
4	3234-4	2	Screw-HHF
5	100-7060-03	1	Plate-Skid
6	3234-5	4	Screw
7	327-4	2	Screw-HH
8	328-24	4	Screw-HH
9	100-8278	1	Cylinder-Steering
10	32136-13	1	Nut-SHH
11	302-60	8	Fitting-Grease
12	112772	3	Joint-Ball, RH
12:1	915031	1	Nut
13	100-6785	1	Ring-Retaining
14	3-6781	2	Washer-Thrust
15	256-318	2	Bearing-Nyliner
16	3256-25	5	Washer-Flat
18	3272-11	6	Pin-Cotter
19	100-6774-03	1	Pivot-Steering
20	302-5	2	Fitting-Grease
22	3218-21	2	Nut-Jam
23	3220-11	3	Nut-Jam
24	100-8534-03	2	Tie Rod-Steering
25	48-9520	2	Nut
26	321-6	2	Screw-HH
27	87-3470	2	Bumper-Axle, Rear

Ref. No.	Part No.	Qty.	Description
29	112771	2	Joint-Ball, LH
29:1	915031	1	Nut
30	32151-104	4	Ring-Retaining, External
31	100-8414	1	RH Axle ASM
32	100-8413	1	LH Axle ASM
33	87-1430	4	Joint-Ball
34	2412-134	4	R-Clamp
35	32128-33	6	Nut-HF
36	87-2420	4	Seal-Joint, Ball
37	32128-50	2	Nut-Flange
38	3256-27	4	Washer-Flat
39	32136-2	4	Nut-SHH
40	3272-17	4	Pin-Cotter
41	100-6738-03	1	Spindle-RH
42	100-6739-03	1	Spindle-LH
43	100-6745-03	1	LH A-Arm ASM
45	302-11	1	Fitting-Lube, 45°



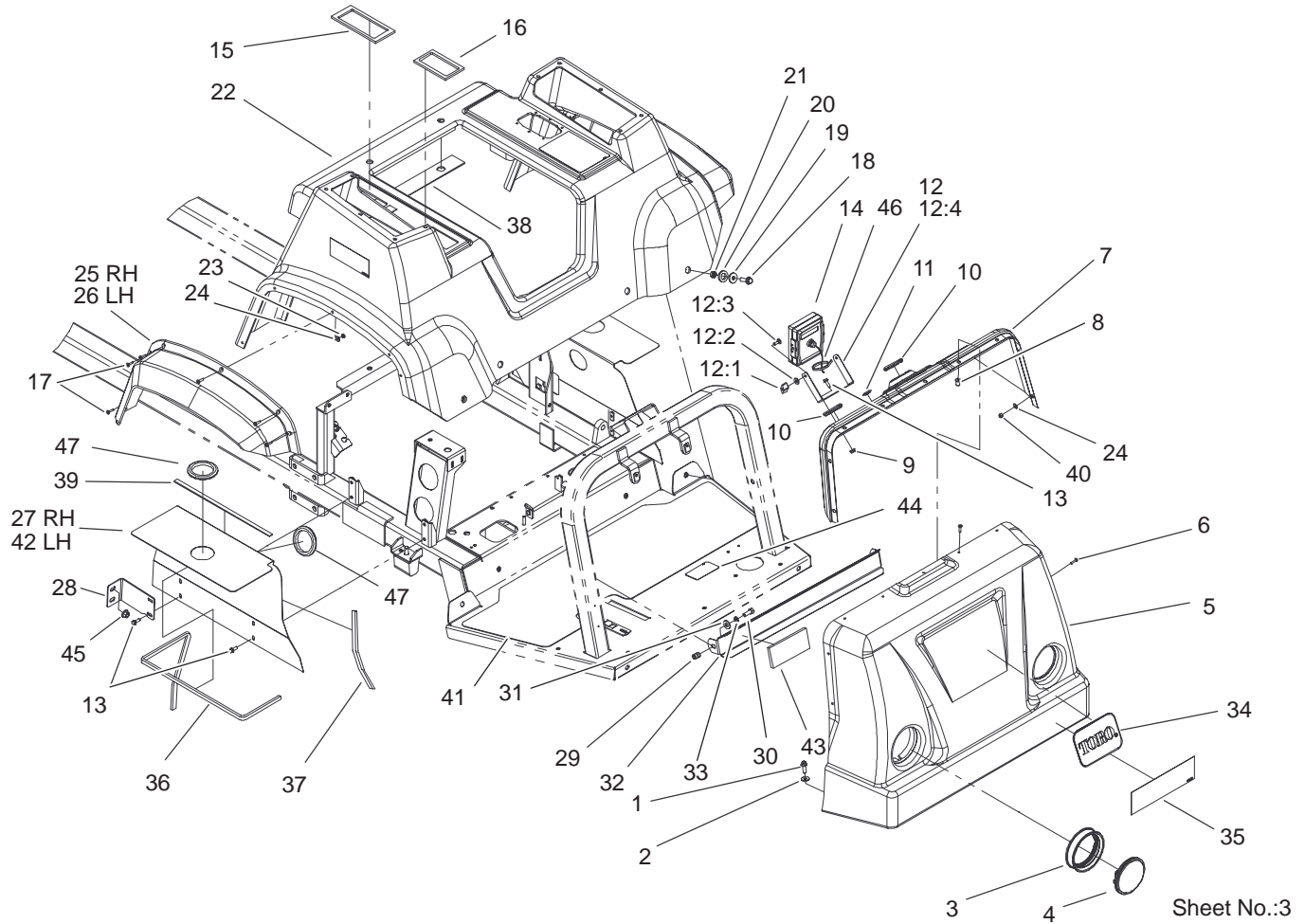
T-3952
Sheet No.:A1

Steering Cylinder Assembly No. 100-8278

Ref. No.	Part No.	Qty.	Description
1	302-60	1	Fitting-Grease
2	107-1552	1	Seal Kit
☆2:1		1	O-Ring
☆2:2		1	O-Ring
☆2:3		1	Seal-Back Up
☆2:4		1	Seal-Psp
☆2:5		1	Seal-Rod
☆2:6		1	Seal-Dust
☆3		1	Shaft
☆4		1	Head
☆5		1	Piston
☆6		1	Nut
7	94-3612	1	Ring-Retaining

Ref. No.	Part No.	Qty.	Description

☆ Not serviced separately

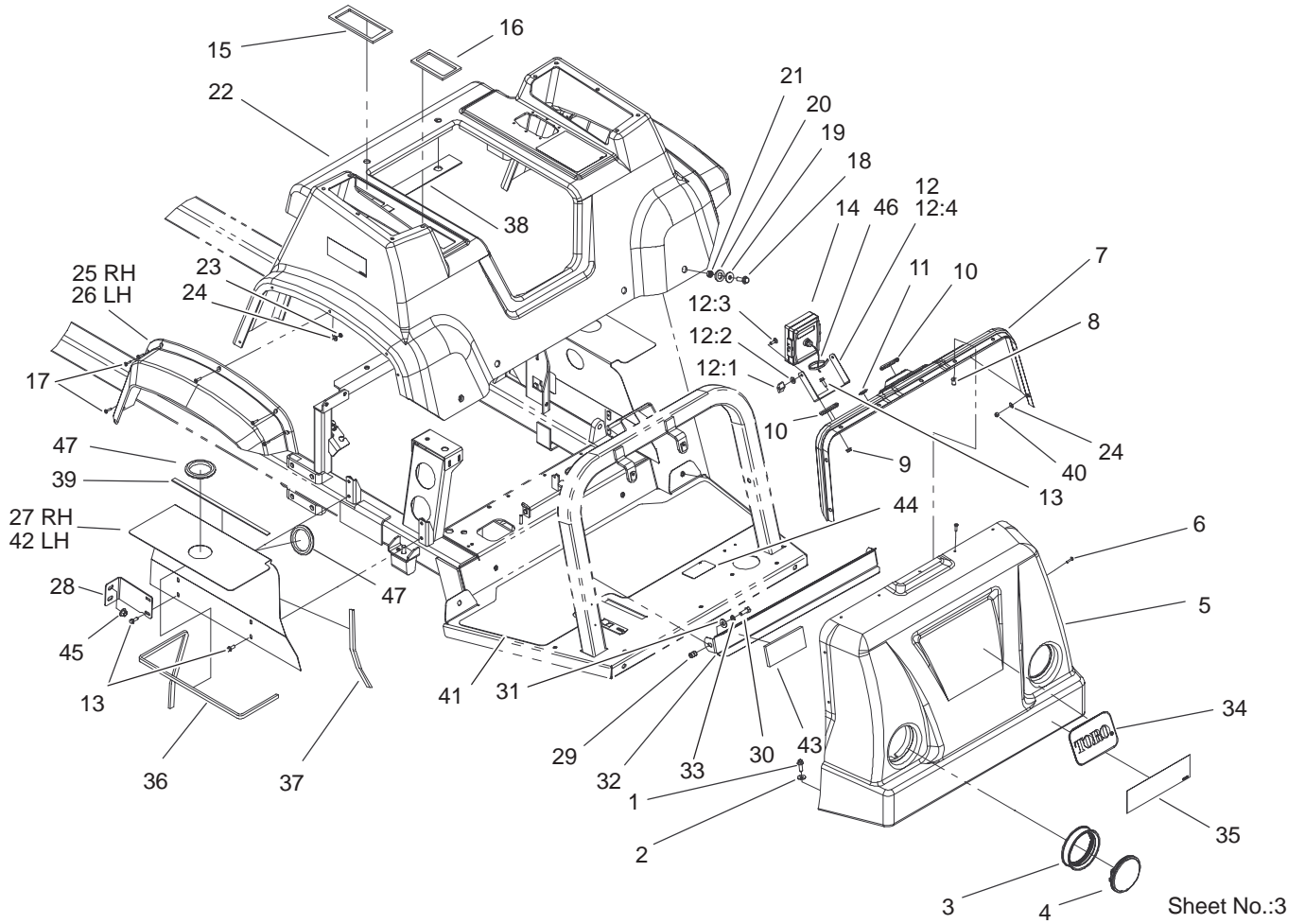


Sheet No.:3

Engine Cover Assembly

Ref. No.	Part No.	Qty.	Description
1	3234-17	5	Screw-HHF
2	3256-3	5	Washer-Flat
3	99-7311	2	Mount-Headlight
4	99-7310	2	Headlight
5	100-8281	1	Hood-Front, Console
6	3250-25	9	Screw-PPH
7	100-6777	1	Dash Panel ASM
8	100-8450	15	Nut-Well
9	32128-33	2	Nut-HF
10	40764	2	Grommet
11	94-7290	1	Plug-Hole
12	100-6735	1	Monitor Mounting Bracket Kit
12:1	99-0667	2	Knob
12:2	99-0730	2	Washer - Rubber
12:3	106-4868	2	Screw-CARR
12:4	99-0576	1	Bracket
13	3234-4	10	Screw-HHF
14	104-8991	1	Monitor-Spray
15	100-8436	1	Seal-Foam
16	100-8437	1	Seal-Foam
17	3250-13	12	Screw-PPH
18	3234-24	6	Screw-HHF
19	356308	6	Washer-Special
20	100-8468	6	Washer-Rubber
21	100-8464	6	Spacer

Ref. No.	Part No.	Qty.	Description
22	100-6776	1	Seat Base W/Decals
23	3217-26	12	Nut-Hex
24	3256-49	16	Washer-Flat
25	94-7074	1	Flare-Fender, RH
26	94-7075	1	Flare-Fender, LH
27	100-8443-03	1	Panel-Shield RH
28	100-8623-03	2	Bracket-Support, Engine Cover
29	92-3788	2	Insert
30	323-6	2	Screw-HH
31	3256-4	2	Washer-Flat
32	100-6731-03	1	Shield-Head Light
33	3253-21	2	Washer-Lock
34	62-5550	1	Decal
35	100-8392	1	Decal
36	100-8423	2	Trim-Shield, Top
37	100-8444	2	Trim-Shield, Front And Rear
38	100-8463	1	Seal-Foam
39	100-8499	2	Seal-Foam
40	3296-21	4	Nut-Lock, NI
41	100-8622	1	Tread-Floor
42	100-8448-03	1	Panel-Shield, LH
43	106-4872	2	Pad-Foam, Headlight
44	100-8619	1	Decal-Boom Switch
45	32128-43	2	Nut-Flange

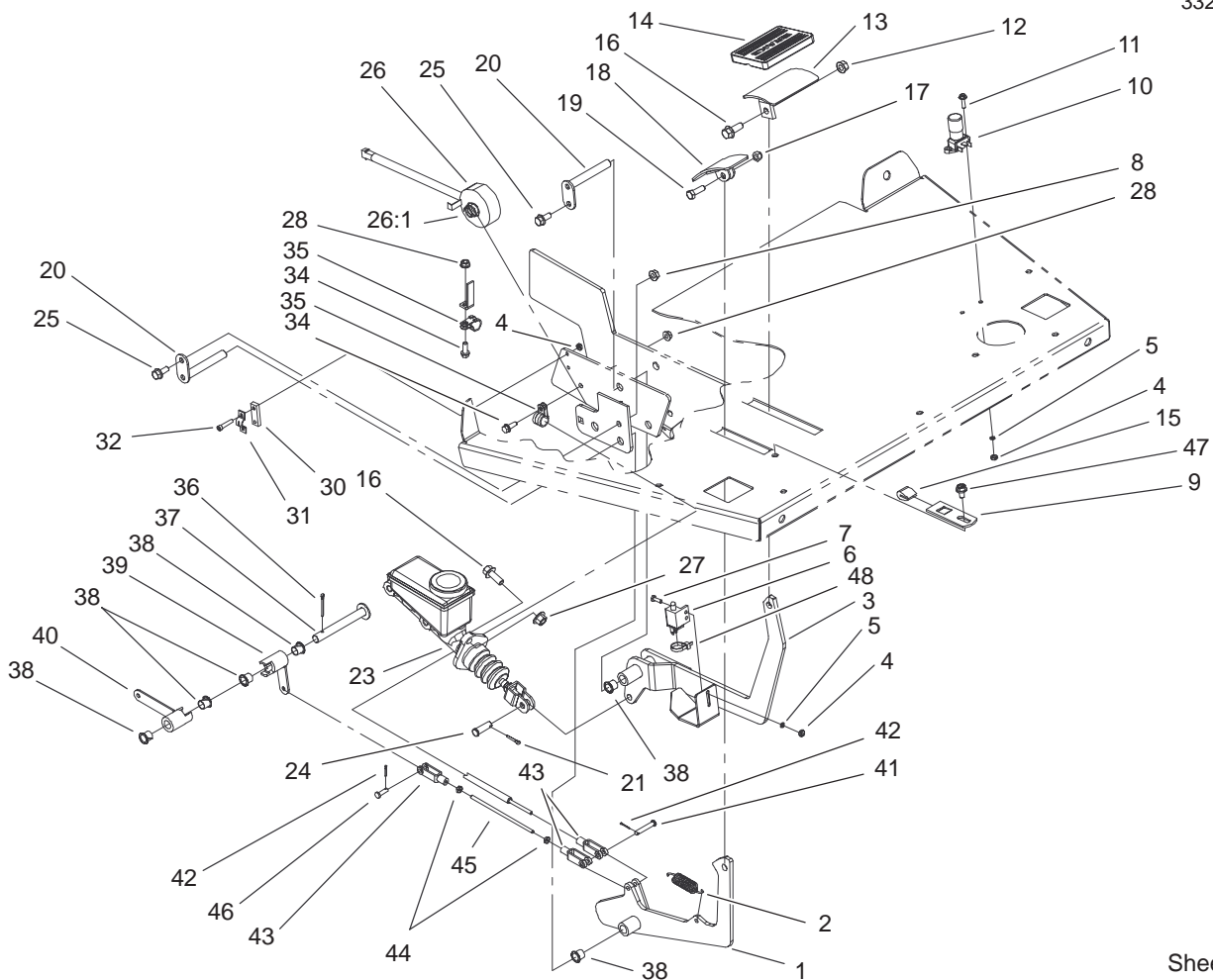


Sheet No.:3

Engine Cover Assembly (Continued)

Ref. No.	Part No.	Qty.	Description
46	3290-379	1	Tie-Cable
47	237-164	4	Grommet

Ref. No.	Part No.	Qty.	Description

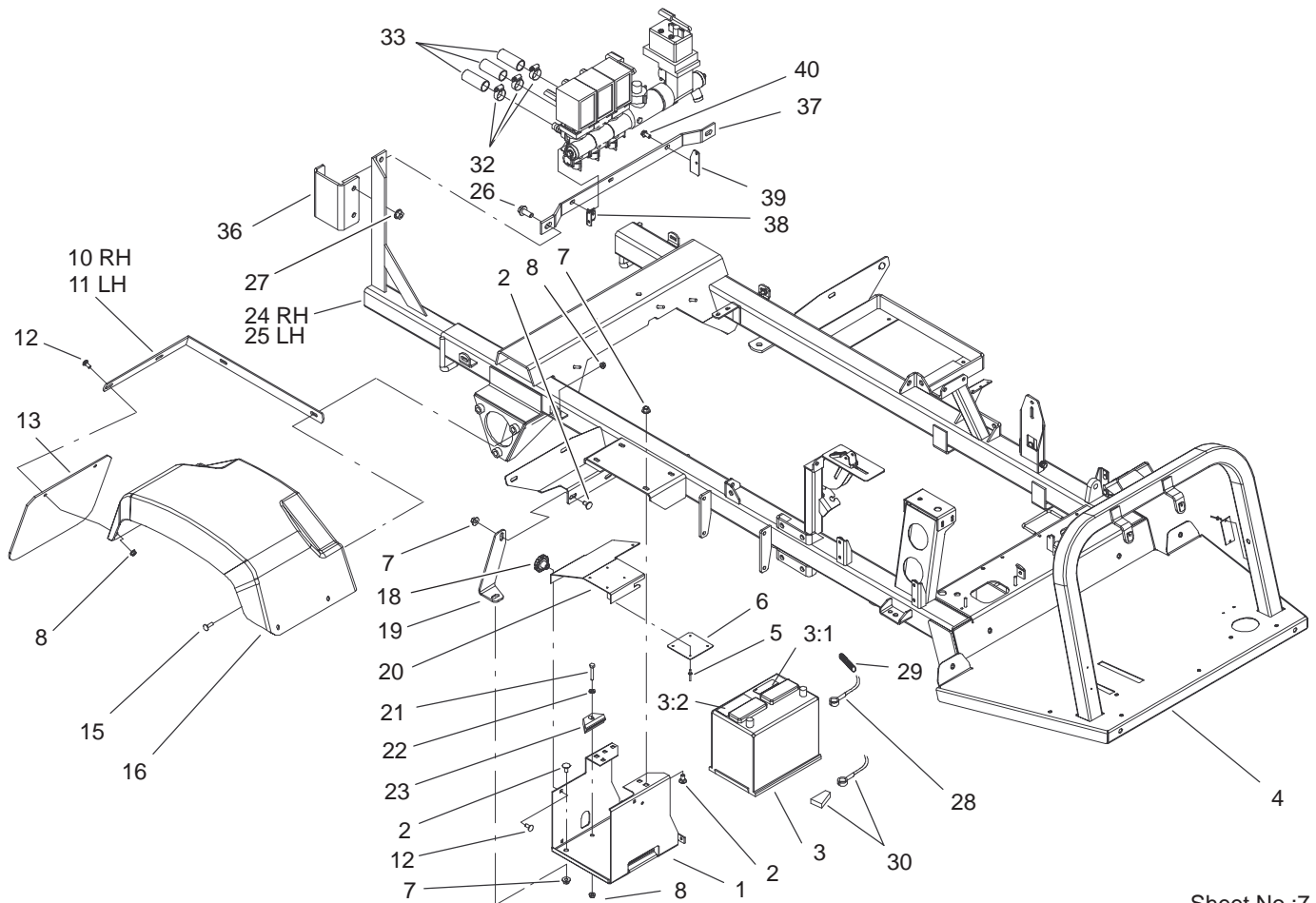


Sheet No.:6

Brake and Accelerator Pedal Assembly

Ref. No.	Part No.	Qty.	Description
1	100-8367-03	1	Accelerator-Lever
2	67-1450	1	Spring-Idler, Deck
3	100-8553-03	1	Brake-Lever
4	3217-26	6	Nut-Hex
5	3253-17	4	Washer-Lock/Sp
6	92-0305	1	Switch
7	3290-134	2	Screw
8	32128-20	2	Nut-HF
9	104-8791-03	1	Plate-Pedal Stop
10	94-7170	1	Switch-Floor
11	32105-13	2	Screw-SHH
12	32128-21	1	Nut-HF
13	100-8422-03	1	Bracket-Pedal
14	7-3900	1	Pad-Brake
15	100-6702	3	Stop-Lever, Pedal
16	3234-11	3	Screw-HHF
17	32153-3	1	Nut-Lock
18	93-8969-03	1	Pedal
19	322-5	1	Screw-HH
20	100-8554	2	Pin-Pivot
21	3272-10	1	Pin-Cotter
23	94-3800	1	Master Cylinder ASM
24	283-2	1	Pin-Clevis
25	3234-5	2	Screw
26	99-8090	1	Magnet ASM
26:1	93-6601	1	Spring-Compression

Ref. No.	Part No.	Qty.	Description
27	32128-43	2	Nut-Flange
28	32128-33	2	Nut-HF
30	100-8561	1	Plate-Spacer
31	100-8560	1	Bracket-Throttle Cable
32	3274-81	2	Screw-HSH
34	3234-4	2	Screw-HHF
35	2412-134	2	R-Clamp
36	3272-12	1	Pin-Cotter
37	100-8517	1	Pivot Pin ASM
38	256-257	8	Flange-Nyliner
39	100-8515	1	Arm-Actuator, Short
40	100-8512	1	Arm-Actuator, Long
41	283-66	1	Pin-Clevis
42	3272-1	2	Pin-Cotter
43	282-28	3	Clevis-Adjustable
44	3219-14	3	Nut-Hex
45	100-8562	1	Rod-Threaded
46	283-67	1	Pin-Clevis
47	3234-28	1	Screw-HHF
48	3290-379	1	Tie-Cable



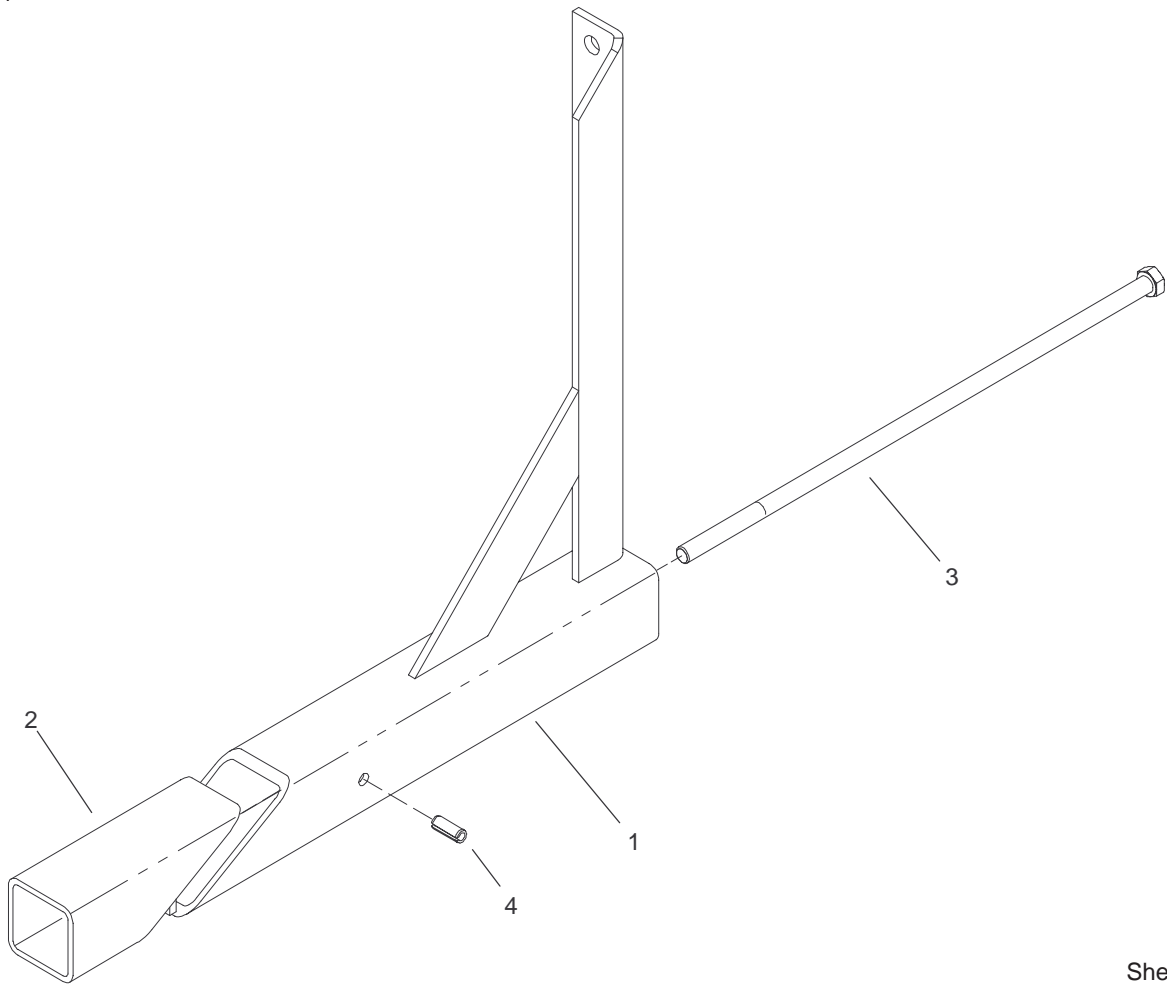
Sheet No.:7

Rear Fender and Battery Mount Assembly

Ref. No.	Part No.	Qty.	Description
1	87-5120-03	1	Bracket-Holder, Battery
2	3231-1	4	Screw-CARR
3	55-7290	1	Battery (Dry)
3:1	26-7170	1	Decal-Battery, Wisco
3:2	26-7180	1	Decal-Battery
4	100-8339-03	1	Mainframe ASM
5	3269-27	4	Rivet-Snap
6	87-7620	1	Shield-Terminal, Battery
7	32128-43	4	Nut-Flange
8	32128-20	13	Nut-HF
10	100-8246-03	1	Mount-Fender, RH
11	100-8245-03	1	Mount-Fender, LH
12	3230-1	10	Bolt-CARR
13	100-8259	2	Guard-Splash
15	3230-2	4	Bolt-CARR
16	93-6498	2	Fender-Rear
18	19-4050	2	Knob
19	100-8201-03	1	Support-Battery
20	87-5130-03	1	Cover-Battery
21	322-9	1	Screw-HH
22	3256-23	1	Washer-Flat
23	66-2490	1	Retainer-Battery
24	106-4960	1	RH Boom Mount ASM
25	106-4961	1	LH Boom Mount ASM

Ref. No.	Part No.	Qty.	Description
26	3234-32	4	Screw-HHF
27	32128-49	6	Nut-HHF
28	99060	1	Cable-Ground
*28:1	106-4915	1	Cap-Protective, Blue
29	104-8742	1	Conduit-Cable, Battery
30	100-8439	1	Cable-Battery, Positive
32	2412-129	3	Clamp-Hose
33	41340	3	Hose-Boom, Left And Right
36	100-8431-03	2	Bracket-Mounting, Boom
37	100-8434-03	1	Bar-Valve Mounting
38	100-8432-03	2	Bracket-Boom Valve ASM
39	100-8433-03	1	Bracket-Control Valve ASM
40	3234-5	3	Screw

* Not illustrated

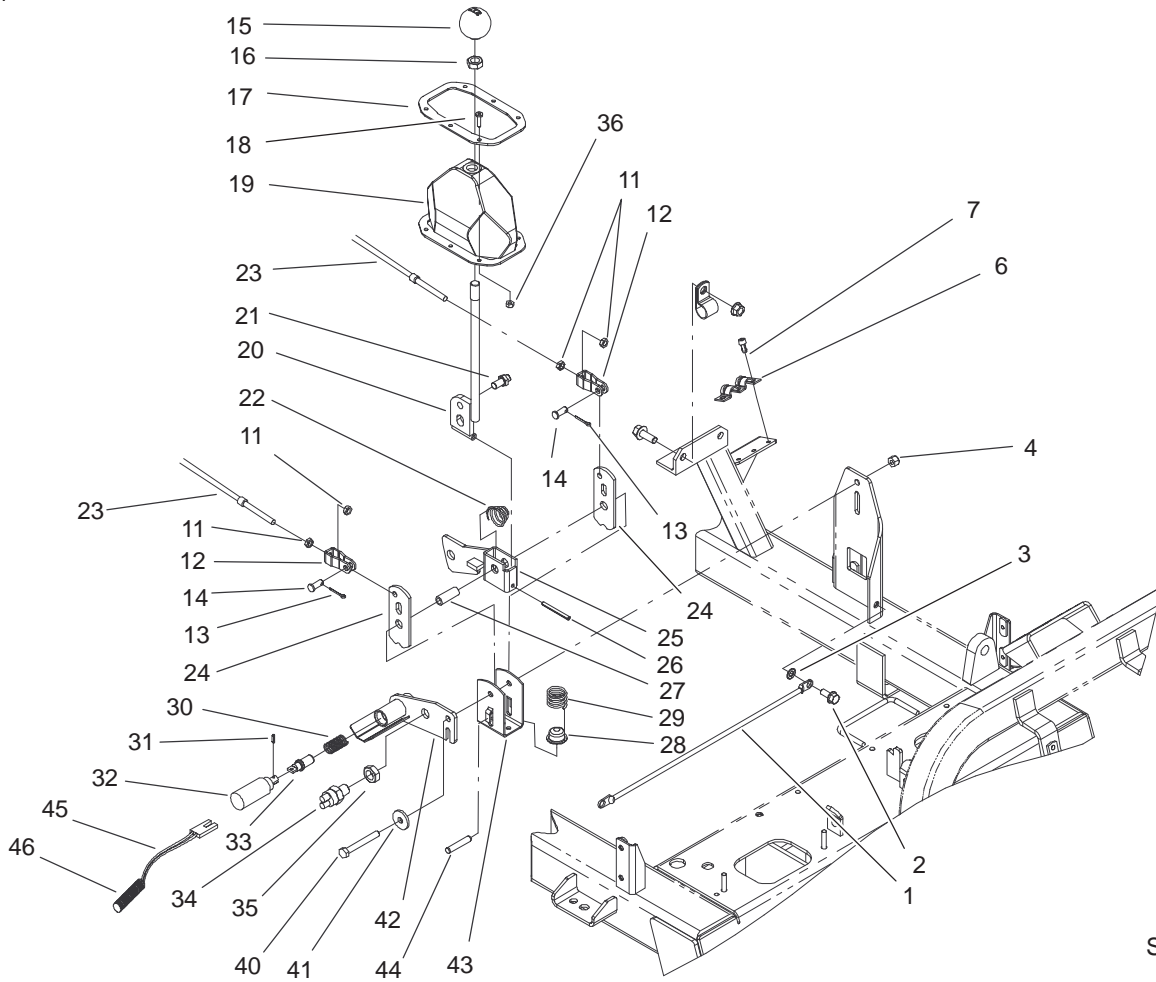


Sheet No.:A3

Right Hand Boom Mount Assembly No. 106-4960

Ref. No.	Part No.	Qty.	Description
1	42222-03	1	RH Boom Mount ASM
2	42223-03	1	Wedge-Tube ASM
3	42199	1	Bolt
4	32121-41	1	Pin-Roll

Ref. No.	Part No.	Qty.	Description

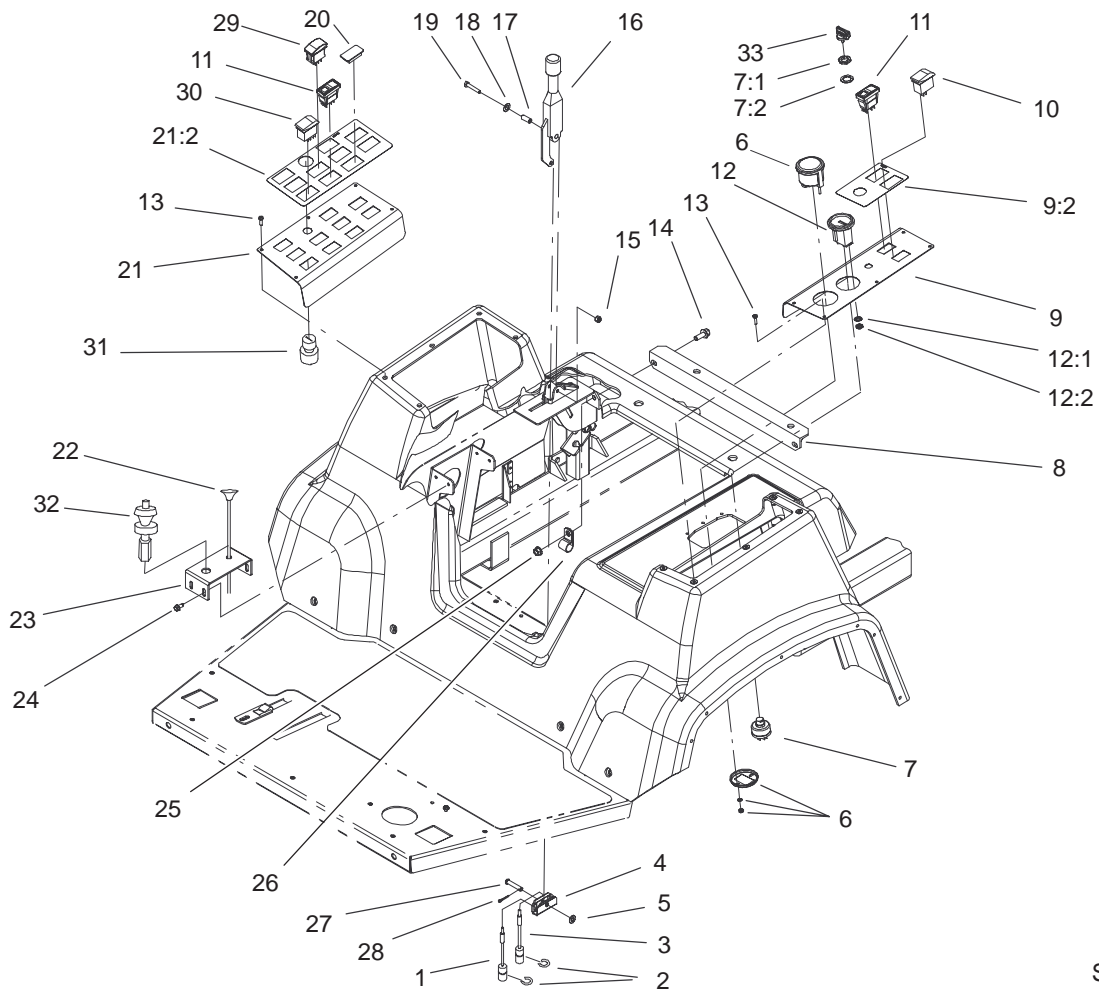


Sheet No.:9

Shifter Assembly

Ref. No.	Part No.	Qty.	Description
1	42617	1	Cable-Ground
2	3234-5	1	Screw
3	3255-8	1	Washer-Lock
4	3296-29	1	Nut-Lock, NI
6	87-4960	1	Clamp-Cable
7	65-5220	3	Screw-Forming, Thread
11	3220-1	4	Nut-Jam
12	87-2310	2	Clevis-Cable
13	3272-6	2	Pin-Cotter
14	283-62	2	Pin-Clevis
15	87-6720	1	Knob-Shift
16	3218-18	1	Nut-Jam
17	87-3760-03	1	Plate-Boot, Shift
18	3250-13	6	Screw-PPH
19	87-8620	1	Shift Boot ASM
20	87-2040	1	Shift Lever ASM
21	87-3650	1	Pin-Shift
22	87-2900	1	Spring-Compression
23	100-8359	2	Cable-Shift, R/I
24	87-3540	2	Link-Shift
25	100-6749	1	Shifter Bracket ASM
26	32121-48	1	Pin-Spring
27	87-2520	1	Tube-Pivot
28	87-3530	1	Button-Shifter
29	87-3660	1	Spring-Compression

Ref. No.	Part No.	Qty.	Description
30	100-6754	1	Spring-Compression
31	32121-7	1	Pin-Spring
32	100-6741	1	Solenoid
33	100-6746	1	Pin-Shift Limiter
34	83-1890	1	Switch-Ball
35	3220-11	1	Nut-Jam
36	3296-2	6	Nut-Lock
40	322-12	1	Screw-HH
41	356303	1	Washer
42	100-6747	1	Solenoid Mount ASM
43	87-3520	1	Clevis
44	3290-507	1	Pin-Dowel
45	100-6751	1	Harness-Shift Limiter
46	100-7072	1	Protector-Wire

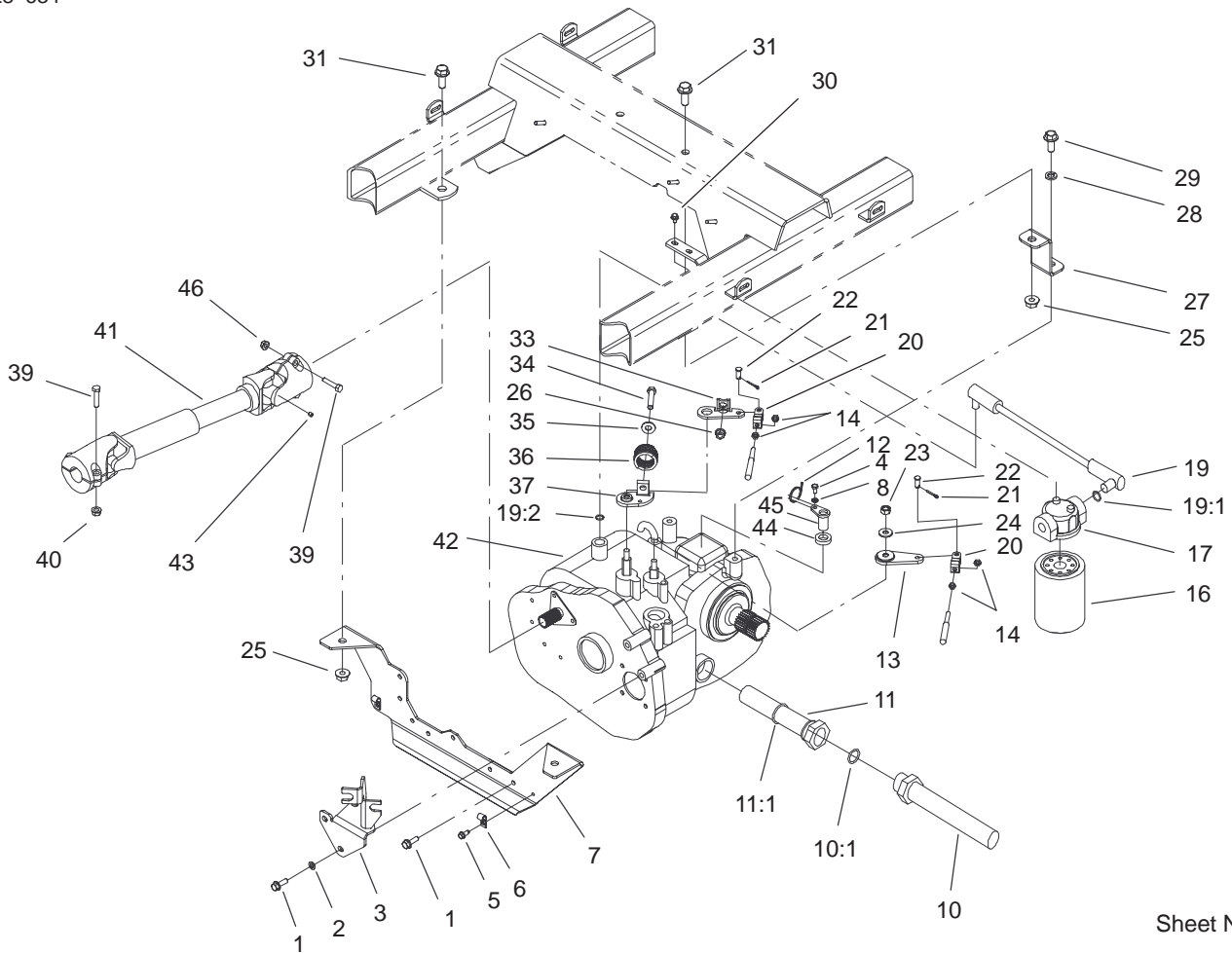


Sheet No.:11

Parking Brake and Console Assembly

Ref. No.	Part No.	Qty.	Description
1	87-8240	1	Cable-Brake
2	32120-47	2	Ring-Retaining, External
3	100-8261	1	Cable-Park Brake, RH
4	87-3480	1	Bracket-Equalizer, Cable
5	3256-23	1	Washer-Flat
6	42610	1	Voltmeter
7	83-0020	1	Switch-Starter
7:1	218-461	1	Nut-HH
7:2	3254-5	1	Washer-Tooth
8	100-8532-03	1	Seatbox-Angle
9	100-8452	1	Vehicle Control Panel ASM
9:2	100-8470	1	Decal-Controls
10	100-8469	1	Switch-Rocker
11	104-9007	2	Switch-Rocker
12	66-2950	1	Gauge-Hourmeter
12:1	3255-20	2	Washer-Lock
12:2	3217-25	2	Nut-Hex
13	3250-25	10	Screw-PPH
14	3234-11	2	Screw-HHF
15	3296-42	1	Nut-Lock, NI
16	87-2710	1	Lever-Brake
17	87-4710	1	Spacer-Brake, Parking

Ref. No.	Part No.	Qty.	Description
18	3290-477	1	Washer-Curved
19	321-9	1	Screw-HH
20	99-7420	5	Plug-Hole
21	100-8505	1	Spray Control Panel ASM
21:2	100-8489	1	Decal-Spray Control
22	41697	1	Choke-Control
23	100-8385-03	1	Bracket-Throttle Speed
24	32144-10	4	Screw-HWH
25	32128-21	2	Nut-HF
26	2412-81	2	Clamp
27	94-3829	1	Pin-Clevis
28	3272-6	1	Pin-Cotter
29	100-1535	1	Switch
30	100-8490	3	Switch-Dpdt
31	94-5245	1	Switch-Key
32	100-8384	1	Throttle Speed Control ASM
33	63-8360	1	Key-Ignition

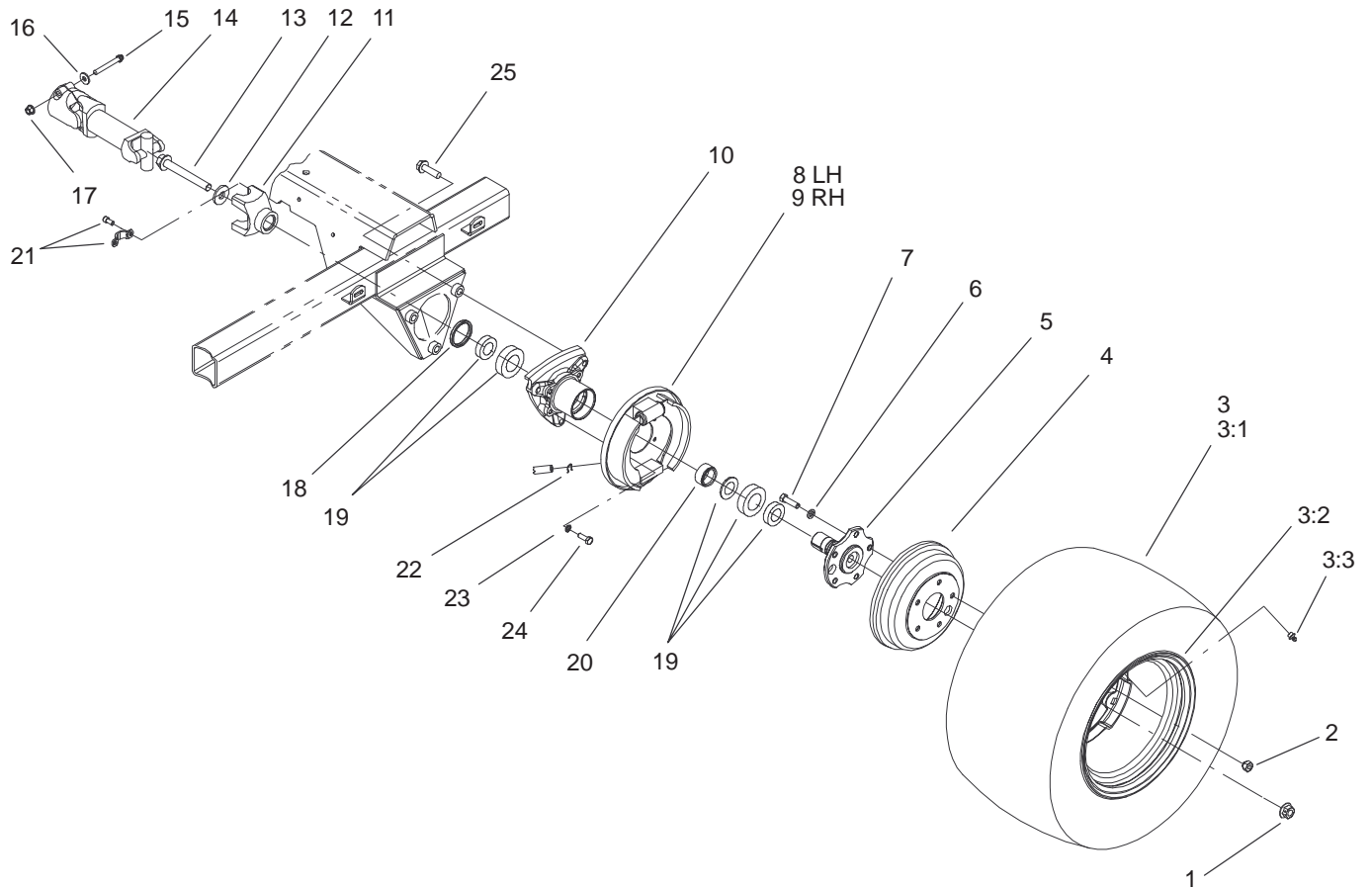


Sheet No.:13

Transaxle Installation Assembly

Ref. No.	Part No.	Qty.	Description
1	33104-025	10	Screw-HHF
2	3253-4	10	Washer-Lock
3	100-8303-03	1	Mount-Cable
4	33113-012	1	Screw-HH
5	32144-10	2	Screw-HWH
6	2412-89	2	Clamp
7	100-8531-03	1	Transaxle-Mount
8	48-8020	1	Washer-Spring
10	100-8250	1	Hose-Suction
10:1	237-81	1	O-Ring
11	87-3990	1	Strainer-Transaxle
11:1	237-123	1	O-Ring
12	3290-379	1	Tie-Cable
13	87-7960	1	Lever-Shift
14	3220-1	4	Nut-Jam
16	54-0110	1	Filter-Oil, Transmission
17	87-8780	1	Head-Filter
19	100-8254	1	Hose-Axle Return
19:1	237-79	1	O-Ring
19:2	237-42	1	O-Ring
20	87-2310	2	Clevis-Cable
21	3272-6	2	Pin-Cotter
22	283-62	2	Pin-Clevis
23	48-9520	2	Nut
24	80-6990	2	Washer-Hardened

Ref. No.	Part No.	Qty.	Description
25	32128-49	2	Nut-HHF
26	32128-21	1	Nut-HF
27	100-8220-03	2	Strap-Transaxle Mount
28	3253-7	2	Washer-Lock
29	33106-030	2	Screw-HHF
30	3234-33	2	Screw-HHF
31	3234-32	4	Screw-HHF
33	87-8250	1	Plate-Arm, Shift
34	323-10	1	Screw-HH
35	3256-4	1	Washer-Flat
36	87-6910	1	Spring-Compression
37	87-7970	1	Arm-Shift
39	322-7	4	Screw-HH
40	3296-29	4	Nut-Lock, NI
41	100-8293	1	Drive Shaft-Input
42	104-9078	1	Transaxle
43	3245-32	1	Screw-HS
44	92-3735	1	Oil Seal-Sensor
45	85-4350	1	Sensor-Geartooth

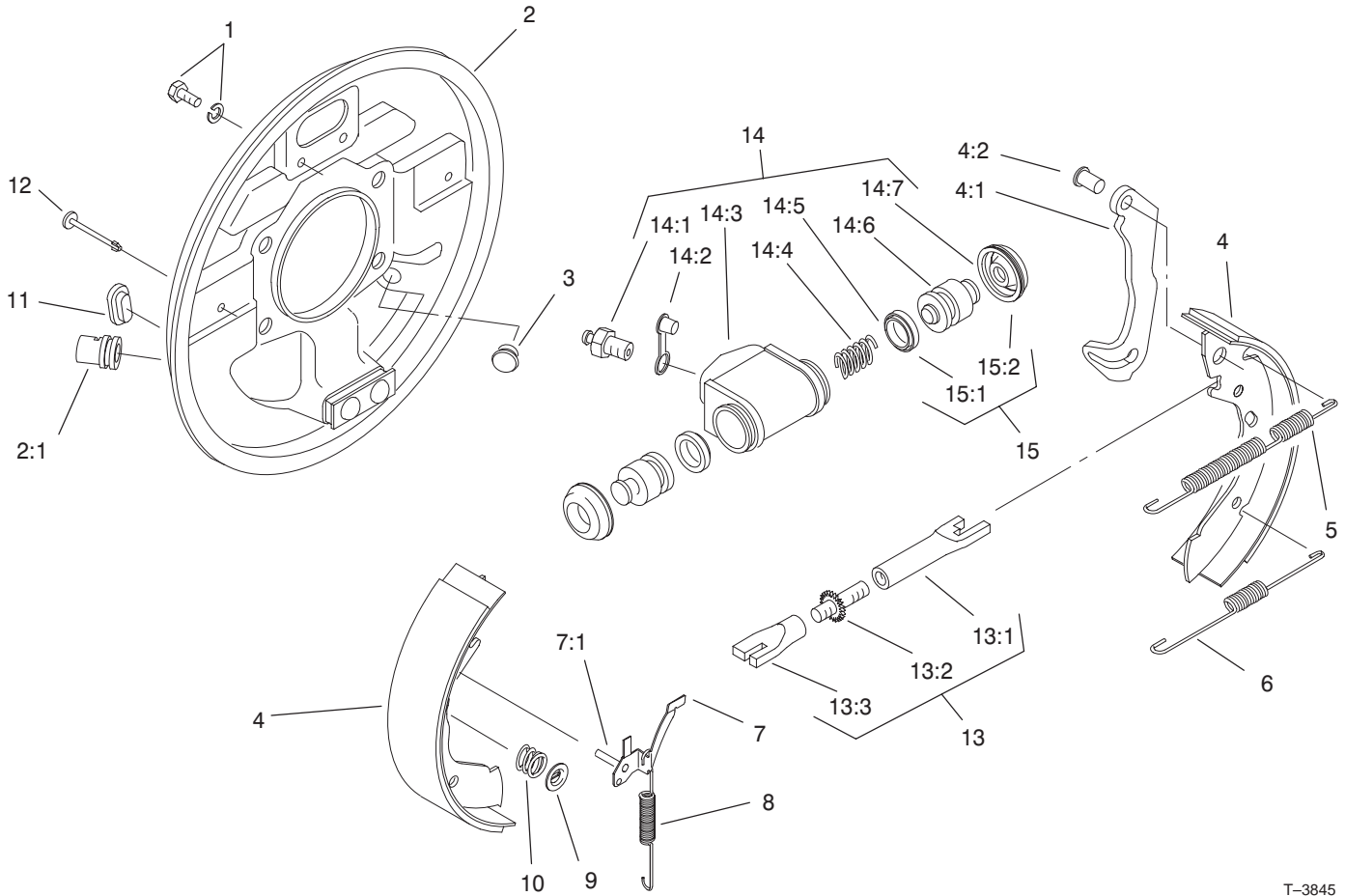


Sheet No.:14

Rear Wheel Assembly

Ref. No.	Part No.	Qty.	Description
1	105-1764	2	Nut-Flange, Side Lock
2	321077	10	Nut-Wheel
3	87-5370	2	Rear Tire And Wheel ASM
3:1	87-6740	1	Tire-Rear
3:2	87-6750	1	Wheel
3:3	232-27	1	Stem-Valve
4	93-7128	2	Drum-Brake
5	105-1717-03	2	Axle-Stub
6	3253-6	10	Washer-Lock
7	87-2080	10	Bolt-Hex, TAP
8	93-7126	1	LH Rear Brake ASM
9	93-7125	1	RH Rear Brake ASM
10	87-2240-03	2	Housing-Axle
11	92-4190	2	Yoke
12	104-9216	2	Washer-Hardened
13	105-1763	2	Screw-Hfh
14	98-2918	2	Driveshaft ASM
15	98-2939	4	Screw-Cap
16	80-6990	4	Washer-Hardened
17	32128-36	4	Nut-HF
18	87-3590	2	Seal-Bearing
19	87-1970	2	Bearing
20	87-4060	2	Spacer-Bearing, Wheel
21	92-4189	2	Strap And Bolt Kit

Ref. No.	Part No.	Qty.	Description
22	87-3310	2	Clip-Cable, Brake
23	3253-21	8	Washer-Lock
24	323-6	8	Screw-HH
25	3234-22	6	Screw-HHF



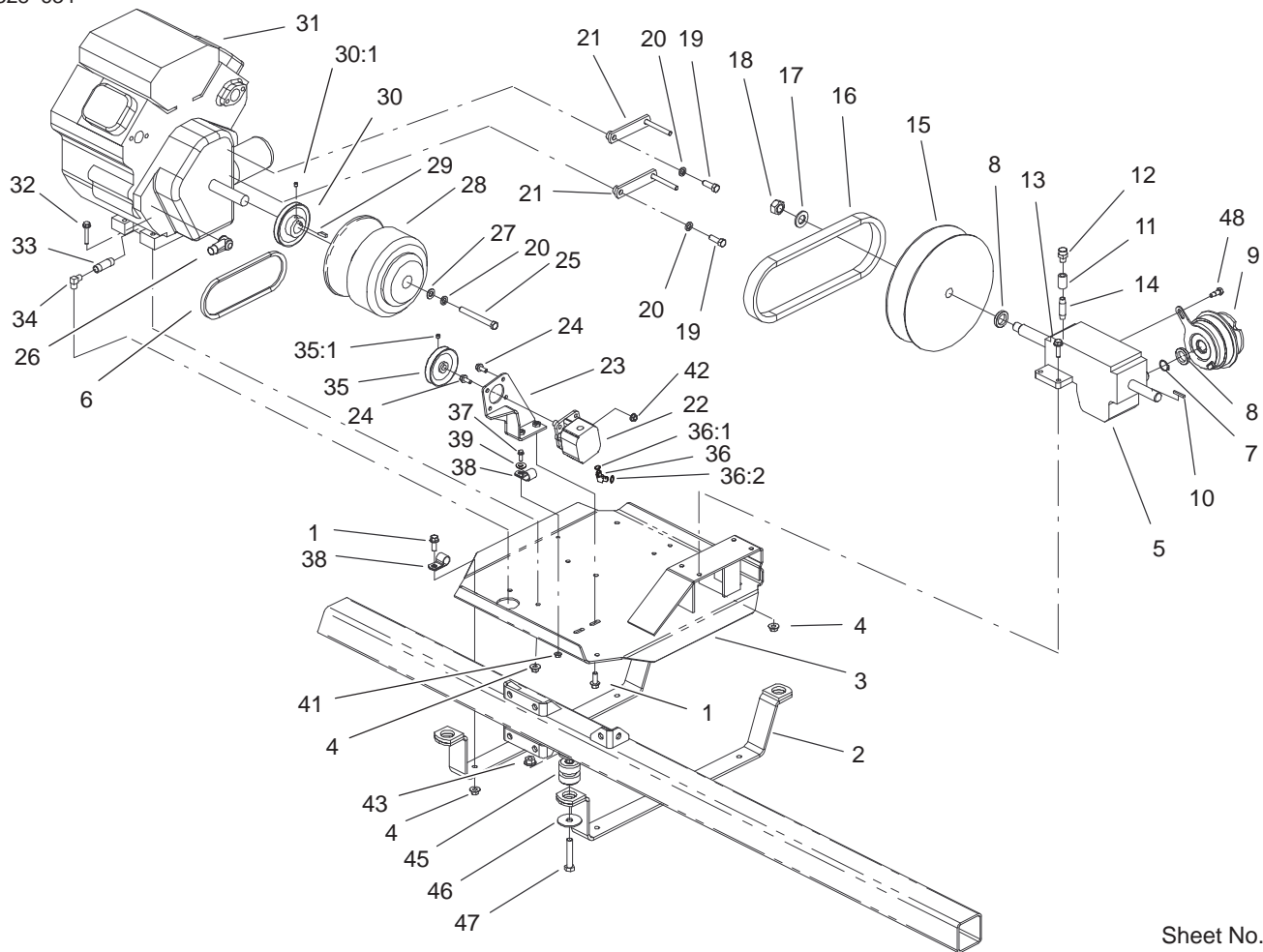
T-3845
Sheet No.:A7

Rear Brake Assembly No. 93-7125 (Right) and 93-7126 (Left)

Ref. No.	Part No.	Qty.	Description
1	92-4135	2	Bolt-Set
2	92-4136	1	LH Backplate ASM
2	92-4100	1	RH Backplate ASM
☆2:1		1	Guide-Pipe
3	92-4146	1	Plunger ASM
4	92-4143	1	Lined Shoe Kit
☆4:1		1	Lever-Operating
☆4:2		1	Pin
5	92-4147	1	Spring-Shoe Ret, Upper LH
5	92-4148	1	Spring-Shoe Ret, Upper RH
6	92-4149	1	Spring-Shoe Ret, Lower
7	92-4124	1	RH Pawl Lever ASM
7	92-4123	1	LH Pawl Lever ASM
☆7:1		1	Pin-Pawl
8	92-4150	1	Spring-Adjuster, LH
8	92-4151	1	Spring-Adjuster, RH
9	92-4131	2	Washer-Hold Down, Shoe
10	92-4152	2	Spring-Hold Down, Shoe
11	92-4134	1	Plug-Inspection

Ref. No.	Part No.	Qty.	Description
12	92-4133	2	Pin-Hold Down, Shoe
13	92-4144	1	LH Adjuster ASM
13	92-4145	1	RH Adjuster ASM
☆13:1		1	Pushrod-Female
☆13:2		1	Bolt-Adjuster
☆13:3		1	Sleeve-Adjuster
14	92-4140	1	LH Wheel Cylinder ASM
14	92-4141	1	RH Wheel Cylinder ASM
14:1	92-4137	1	Screw-Bleed
14:2	92-4114	1	Cap-Screw, Bleed
☆14:3		1	Body
☆14:4		1	Spring
☆14:5		2	Seal-'I' Type
☆14:6		2	Piston
☆14:7		2	Cover-Dust
15	92-4142	1	Seal Kit
☆15:1		2	Seal-'I' Type
☆15:2		2	Cover-Dust

☆ Not serviced separately

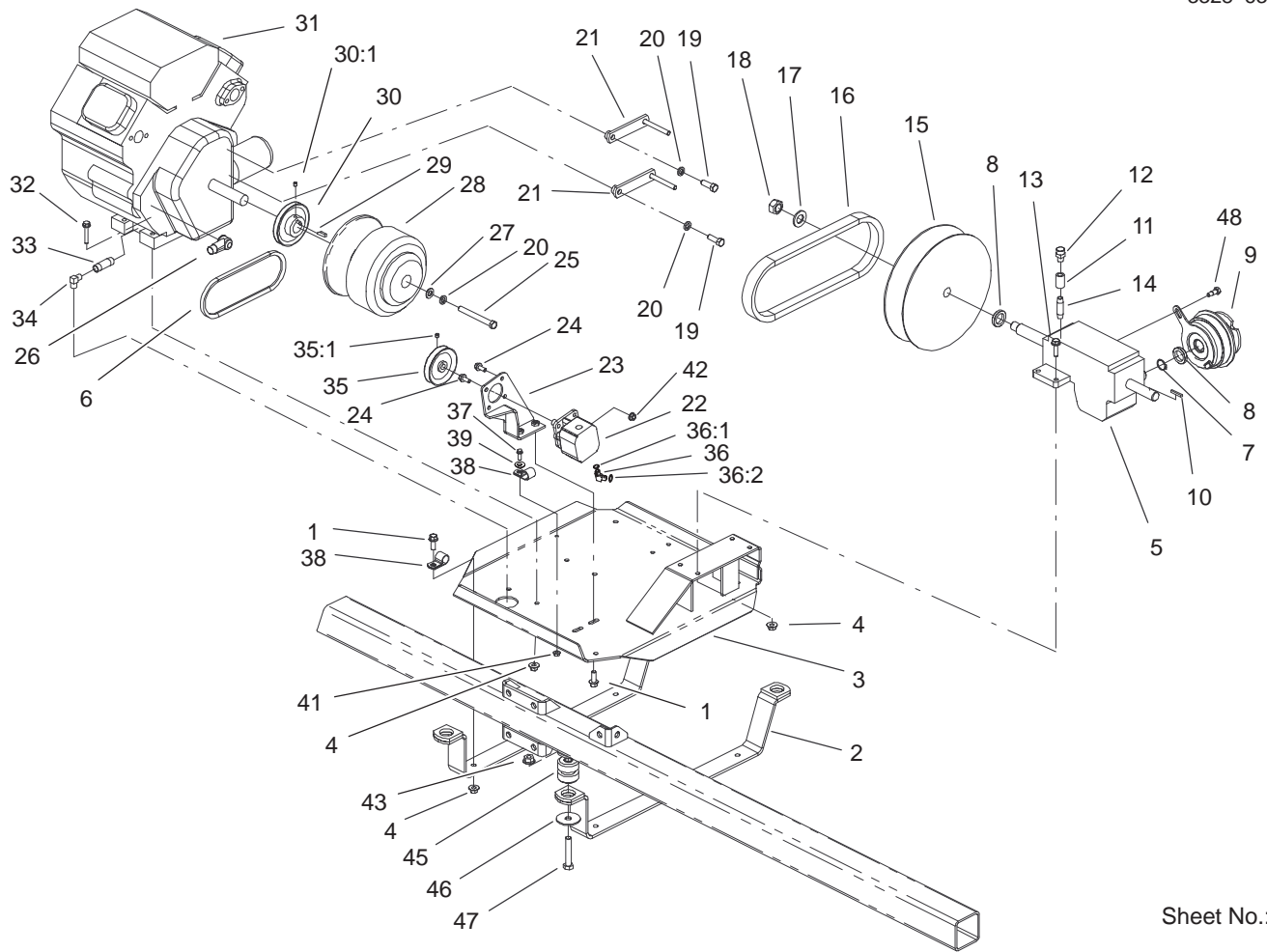


Sheet No.:15

Engine Installation Assembly

Ref. No.	Part No.	Qty.	Description
1	3234-11	6	Screw-HHF
2	100-8377-03	2	Strap-Support, Engine
3	100-8357-03	1	Plate-Mounting, Engine
4	32128-43	12	Nut-Flange
5	99-0663	1	Gearbox-Pump Drive
6	100-8372	1	Belt-Steering
7	32151-36	1	Ring-Retaining
8	100-8390	2	Spacer
9	100-8290	1	Clutch-Electric, Pump Drive
10	92-0049	1	Key-Square
11	106-4869	1	Pipe-Coupling
12	100-6931	1	Breather
13	3234-24	4	Screw-HHF
14	104-8766	1	Nipple
15	100-8289	1	Drive Pulley ASM
16	99-0735	1	Belt-Cvt
17	3256-28	1	Washer-Flat
18	100-8486	1	Nut-Locking, LH
19	324-5	2	Screw-HH
20	3253-6	3	Washer-Lock
21	100-8373	2	Belt Guide ASM
22	100-8302	1	Pump-Steering
23	100-8368-03	1	Bracket-Pump, Steering

Ref. No.	Part No.	Qty.	Description
24	322-4	4	Screw-HH
25	3212-16	1	Screw-HH
26	104-8798	1	Boot-Terminal
27	3256-25	1	Washer-Flat
28	100-8288	1	Clutch-Driver
29	100-8260	1	Key-Shaft
30	92-0488	1	Pulley-Pump, Power Steering
30:1	3246-2	1	Screw-Set, HSH
31	99-0819	1	Engine-Kohler, Ps-64647
32	3234-19	4	Screw-HHF
33	92-3647	1	Nipple
34	95023	1	Elbow-90°
35	100-8371	1	Pulley-Pump, Power Steering
35:1	3246-2	1	Screw-Set, HSH
36	100-8255	1	Fitting-90° Suction
36:1	237-80	1	O-Ring
36:2	237-177	1	O-Ring
37	3234-4	1	Screw-HHF
38	2412-81	3	Clamp
39	3256-22	1	Washer-Flat
41	32128-33	1	Nut-HF
42	32128-20	4	Nut-HF

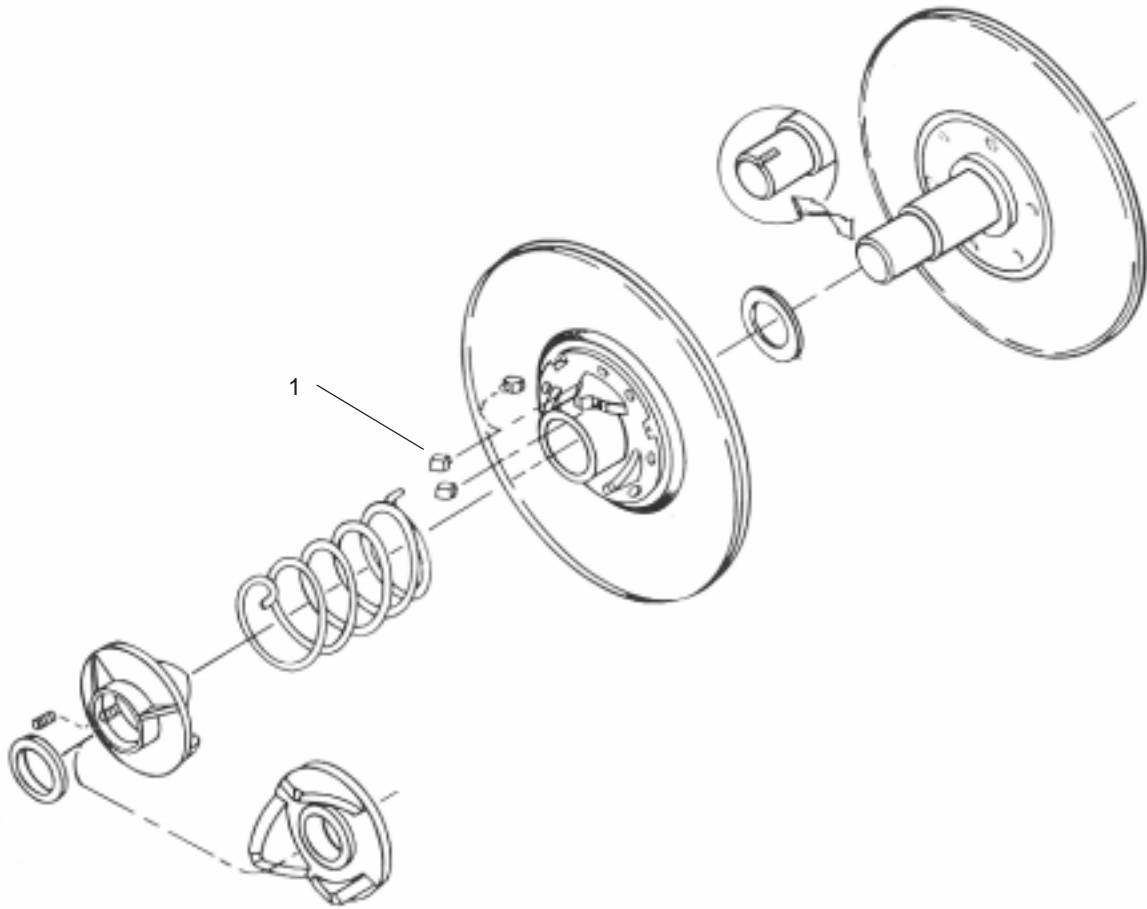


Sheet No.:15

Engine Installation Assembly (Continued)

Ref. No.	Part No.	Qty.	Description
43	32128-49	4	Nut-HHF
45	87-4970	4	Engine Mount ASM
46	41985	4	Special-Washer
47	325-11	4	Screw-HH
48	59-5400	1	Bolt-Shoulder

Ref. No.	Part No.	Qty.	Description

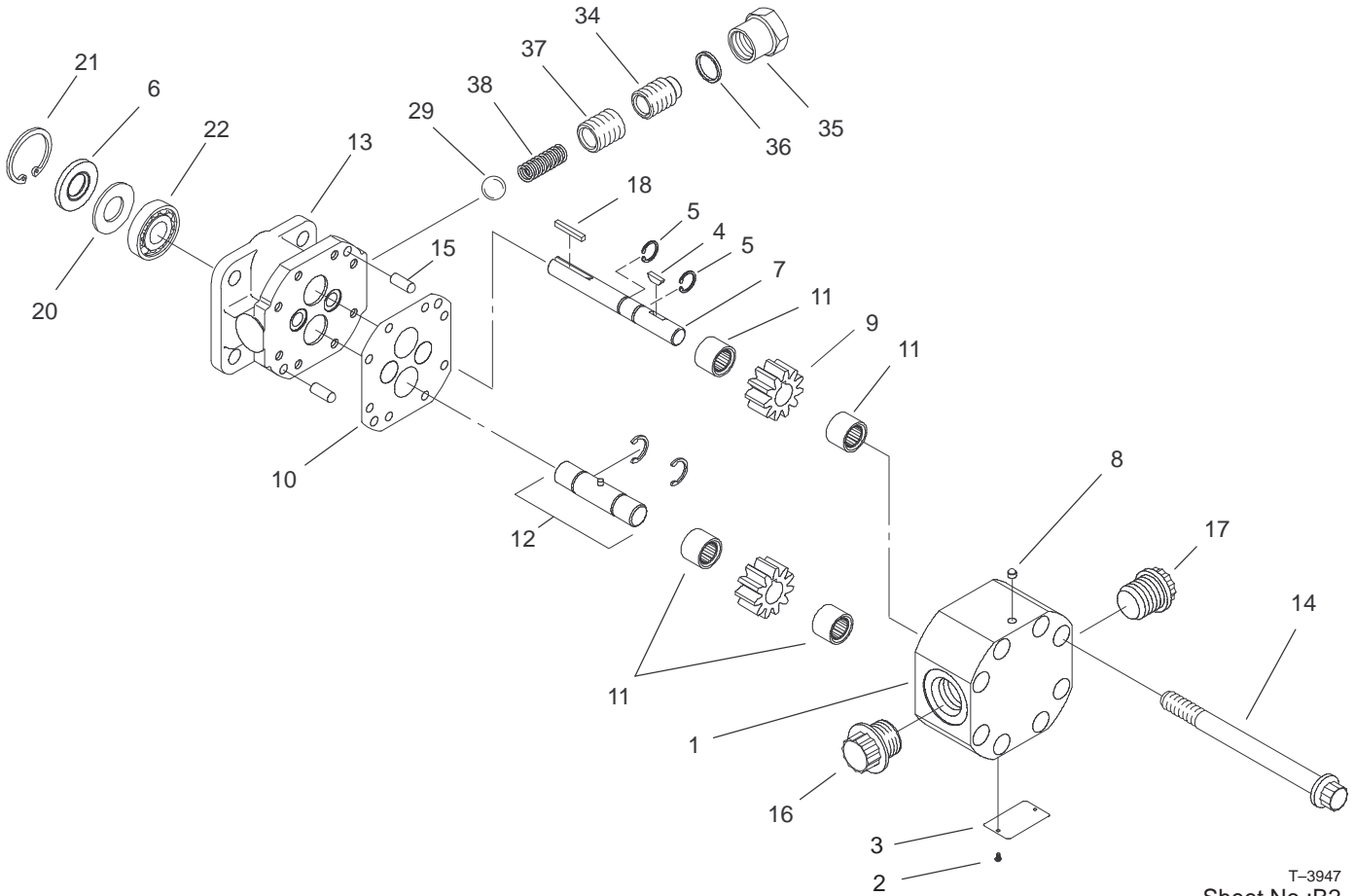


T-3950
Sheet No.:B1

Drive Pulley Assembly No. 100-8289

Ref. No.	Part No.	Qty.	Description
1	104-1683	6	Button

Ref. No.	Part No.	Qty.	Description



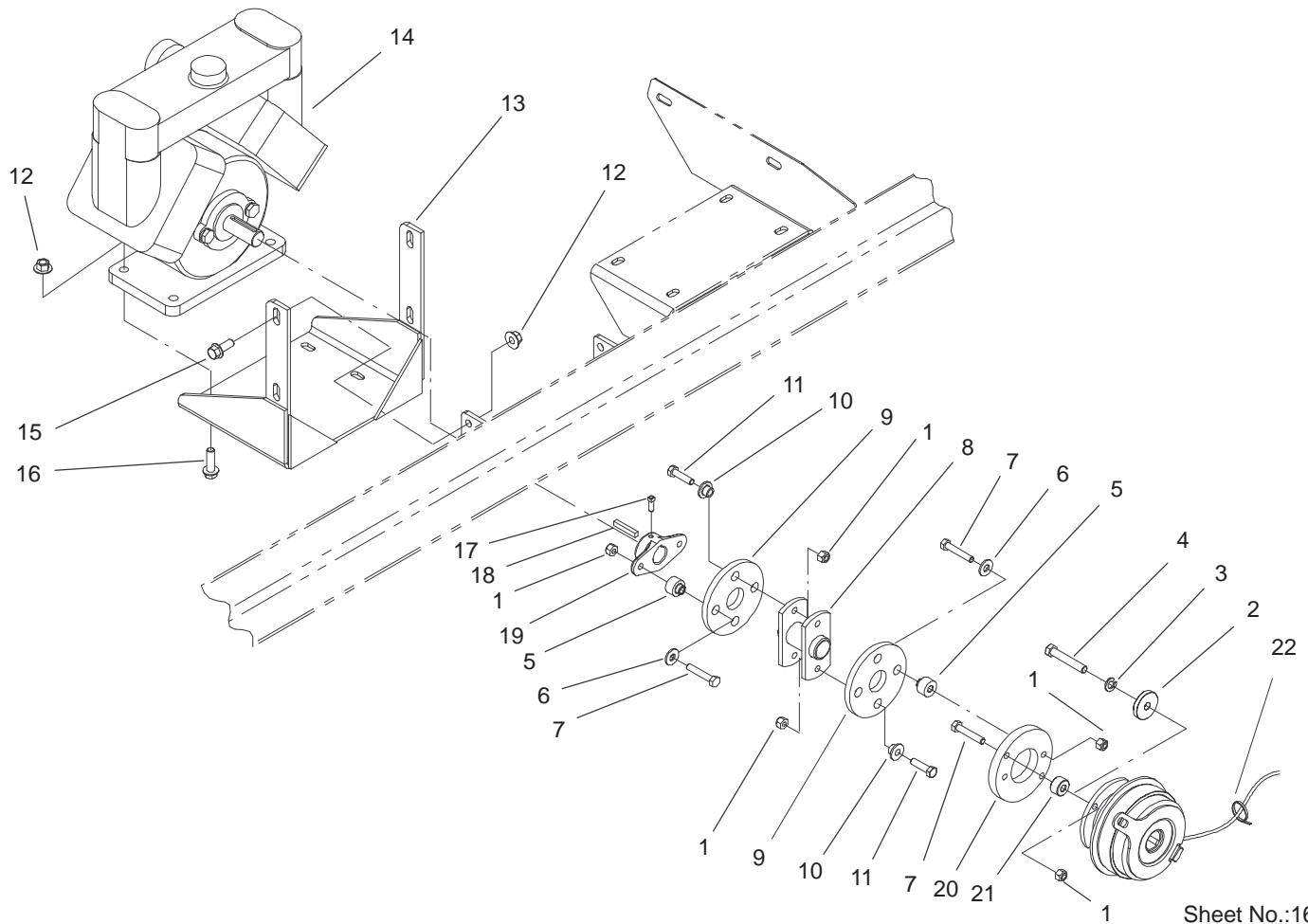
T-3947
Sheet No.:B2

Steering Pump Assembly No. 100-8302

Ref. No.	Part No.	Qty.	Description
☆1		1	Housing
☆2		2	Screw
☆3		1	Name Plate
4	100-8270	1	Key
5	106-6851	2	Ring-Retaining
6	100-8275	1	Seal
7	106-6852	1	Shaft-Drive
8	100-8269	1	Plug-Beta
9	106-6853	1	Gear
10	106-6854	1	Gasket Kit
11	106-6855	4	Bearing-Needle
12	106-6856	1	Shaft-Idler
☆13		1	Stator
14	100-8268	8	Screw
15	100-8265	2	Pin-Shear
☆16		1	Plug
☆17		1	Plug
18	92-3876	1	Key-Shaft
20	92-2186	1	Spacer
21	106-6857	1	Ring-Retaining
22	92-2191	1	Bearing-Ball
29	100-8273	1	Ball-Steel
34	100-8272	1	Screw
35	92-2184	1	Valve-Relief, Hex Cap
36	92-2180	1	Gasket-Copper

Ref. No.	Part No.	Qty.	Description
37	92-3870	1	Spring
38	92-3871	1	Spring

☆ Not serviced separately

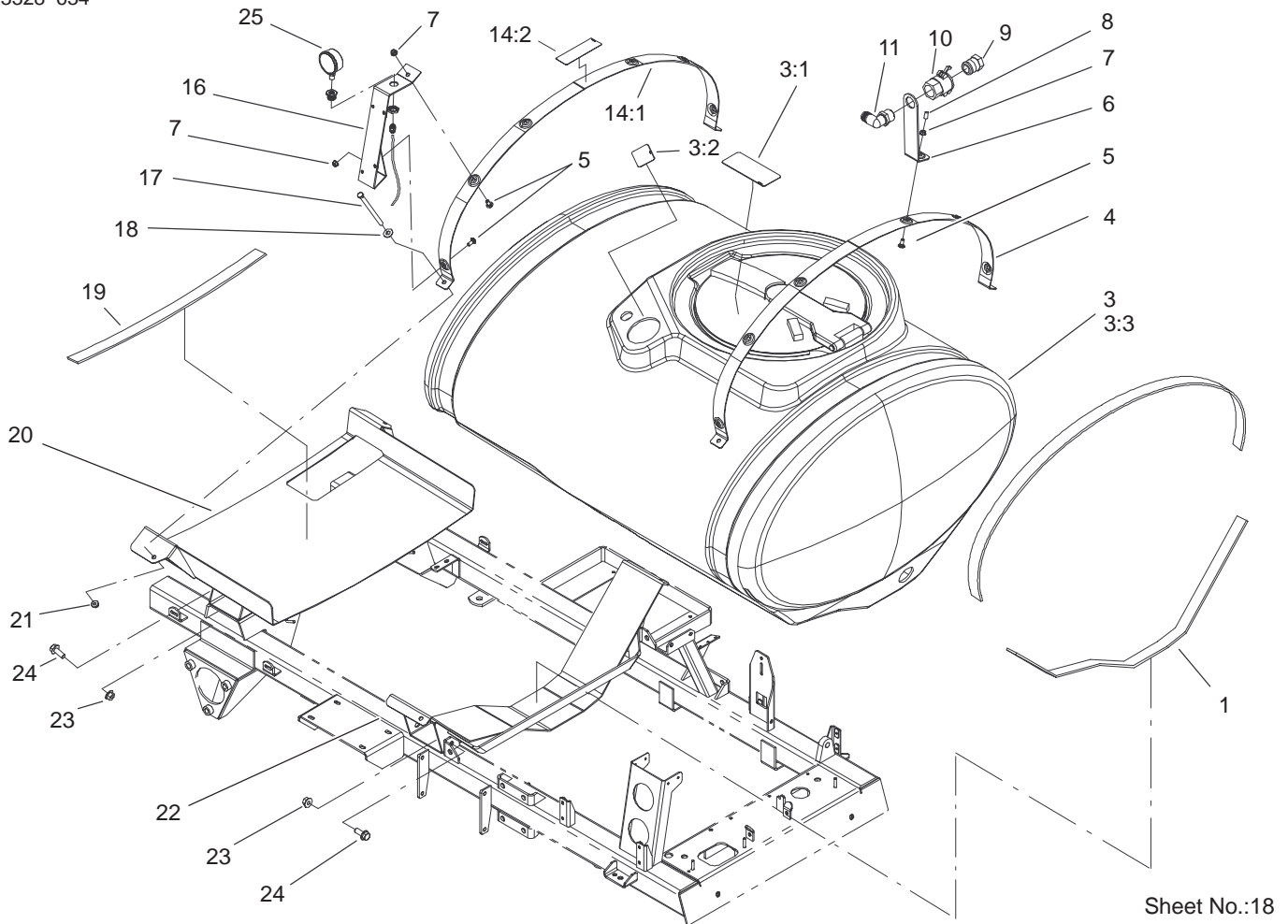


Sheet No.:16

Pump Installation Assembly

Ref. No.	Part No.	Qty.	Description
1	3296-29	10	Nut-Lock, NI
2	100-8391	1	Retainer-Electric Clutch
3	3253-5	1	Washer-Lock
4	3211-10	1	Screw-HH
5	27-6590	4	Spacer-Coupling, Rubber
6	3256-3	4	Washer-Flat
7	322-9	6	Screw-HH
8	80-6950-03	1	Coupler-Drive
9	100-8471	2	Coupling-Rubber
10	104-8774	4	Spacer-Coupling
11	322-6	4	Screw-HH
12	32128-43	8	Nut-Flange
13	100-8477-03	1	Pump Mounting Bracket ASM
14	104-9170	1	Pump Assembly (See pg. 40-41 for breakdown)
15	3234-11	4	Screw-HHF
16	3234-24	4	Screw-HHF
17	3241-5	2	Screw-Set
18	67-7490	1	Key-Square
19	93-2589	1	Hub-Pump
20	100-8435	1	Adapter-Clutch

Ref. No.	Part No.	Qty.	Description
21	104-8763	2	Spacer
22	3290-379	1	Tie-Cable



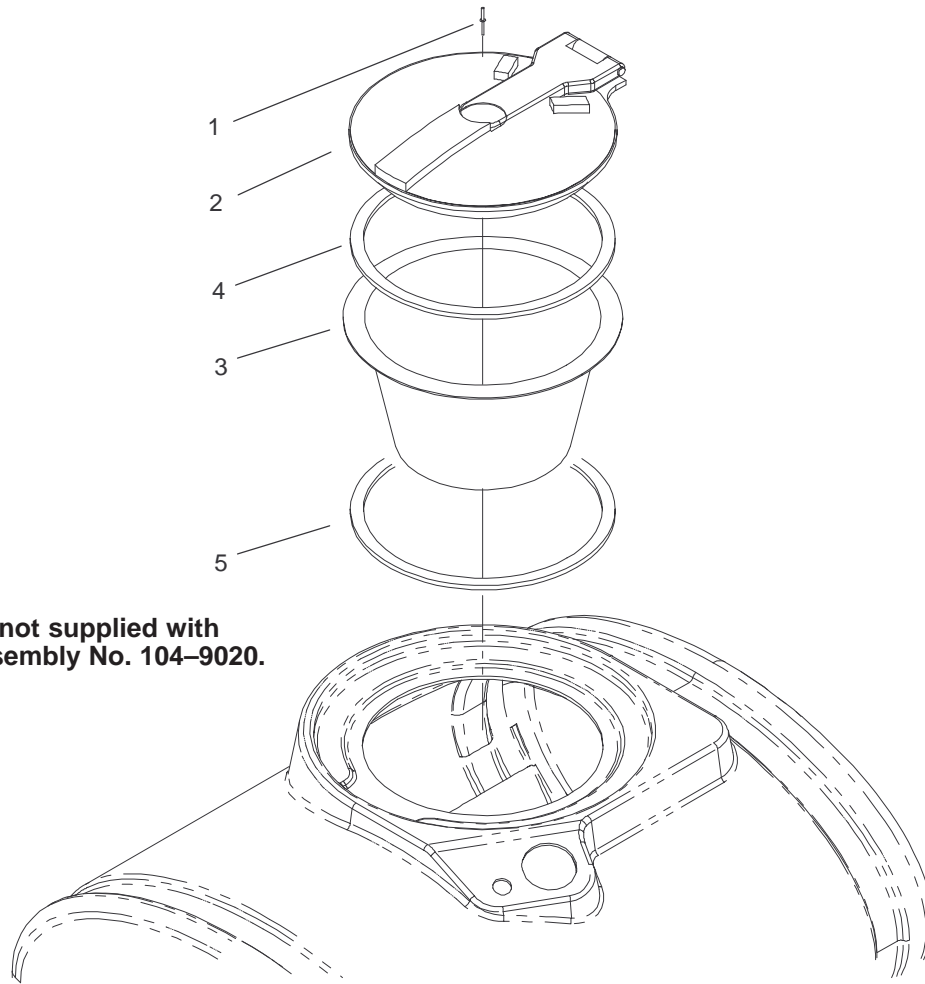
Sheet No.:18

Tank and Saddle Assembly

Ref. No.	Part No.	Qty.	Description	Ref. No.	Part No.	Qty.	Description
1	100-8573	2	Foam-Saddle, Front	21	104-8301	4	Nut-Flange, NI
3	104-9053	1	160 Gallon Tank ASM	22	100-8565-03	1	Front-Saddle
3:1	100-6836	1	Decal-Tank Drain	23	32128-49	4	Nut-HHF
3:2	93-0688	1	Decal	24	3234-32	4	Screw-HHF
☆3:3		1	160 Gallon Spray Tank ASM	25	100-8576	1	Gauge-Pressure
4	100-8575-03	1	Band-Tank				
5	3230-1	3	Bolt-CARR				
6	100-6778-03	1	Bracket-Anti-Siphon				
7	32128-20	3	Nut-HF				
8	42452	1	Cap-Protective				
9	41316	1	Adapter-Quick				
10	100-6779	1	Coupling-Female				
11	41140	1	Elbow				
14	100-7006	1	Tank Band ASM				
14:2	87-0570	1	Decal-Electric Shock				
☆15		1	Tank Fitting Kit (See pg.42 for breakdown)				
16	100-8479-03	1	Tee Mounting Bracket ASM				
17	100-8528	4	Screw-HH				
18	3256-4	4	Washer-Flat				
19	100-8574	3	Foam-Saddle, Right Rear				
20	100-8569-03	1	Rear-Saddle				

☆ Not serviced separately

* Not illustrated



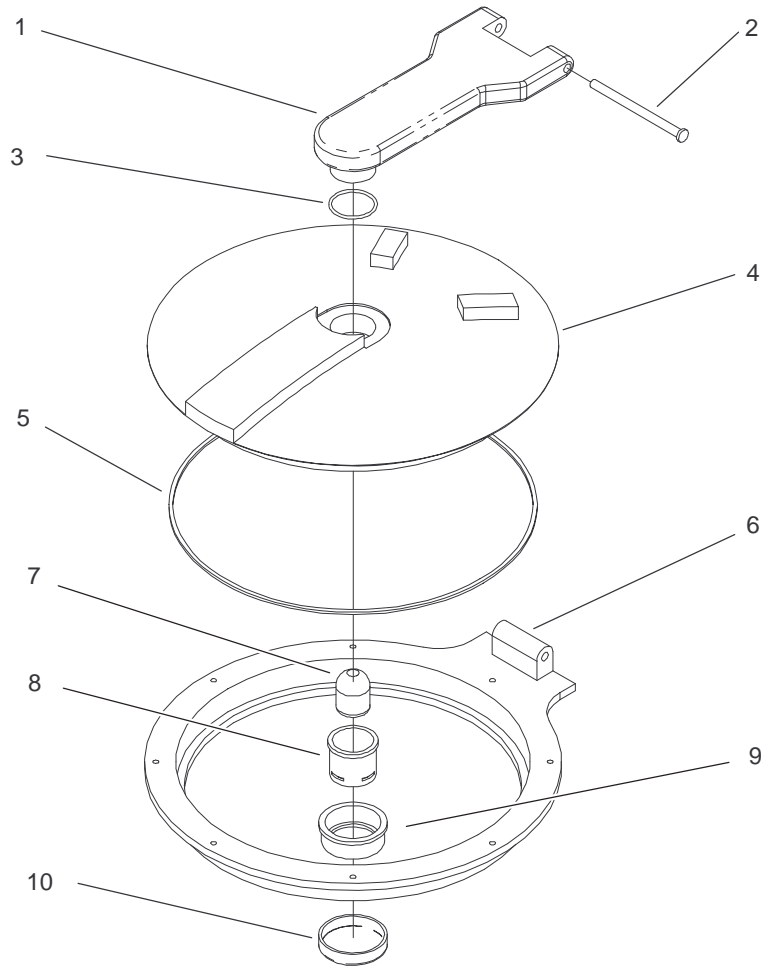
Note: Item 5 is not supplied with Spray Tank Assembly No. 104-9020.

Sheet No.:B5

Spray Tank Assembly No. 104-9020

Ref. No.	Part No.	Qty.	Description
1	93-0833	8	Rivet
2	94-7088	1	Tank Lid ASM
3	104-9051	1	Basket-Strainer
4	106-4991	1	Seal-Lid
5	104-9004	1	Seal-Basket, Strainer

Ref. No.	Part No.	Qty.	Description

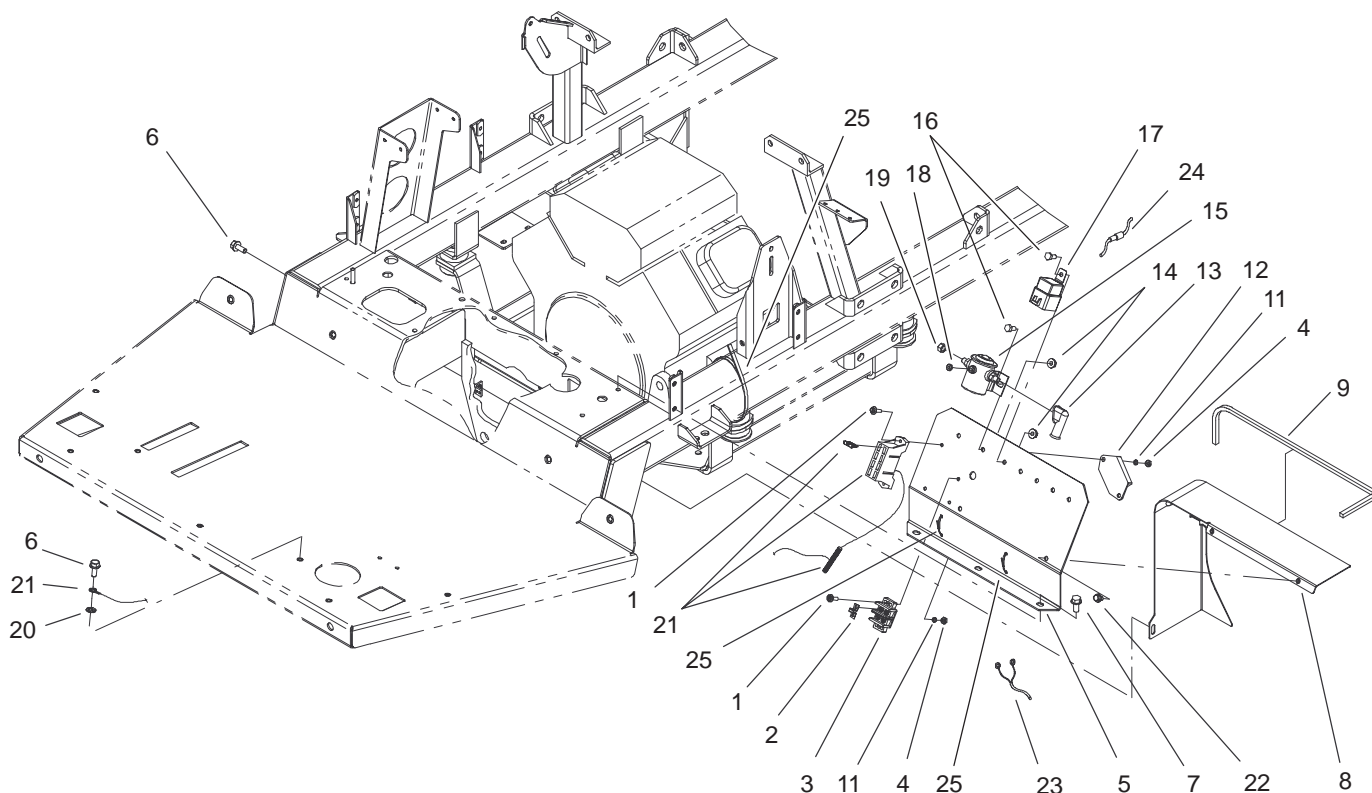


Sheet No.:ZZ

Spray Tank Lid Assembly No. 94-7088

Ref. No.	Part No.	Qty.	Description
1	94-7205	1	Arm-Swivel
2	94-7213	1	Pin-Pivot
3	94-7206	1	O-Ring
4	94-7207	1	Lid
5	94-7208	1	Gasket
6	94-7211	1	Ring
7	94-7209	1	Plunger
8	94-7210	1	Body
9	94-7212	1	Nut
10	94-7214	1	Cap

Ref. No.	Part No.	Qty.	Description



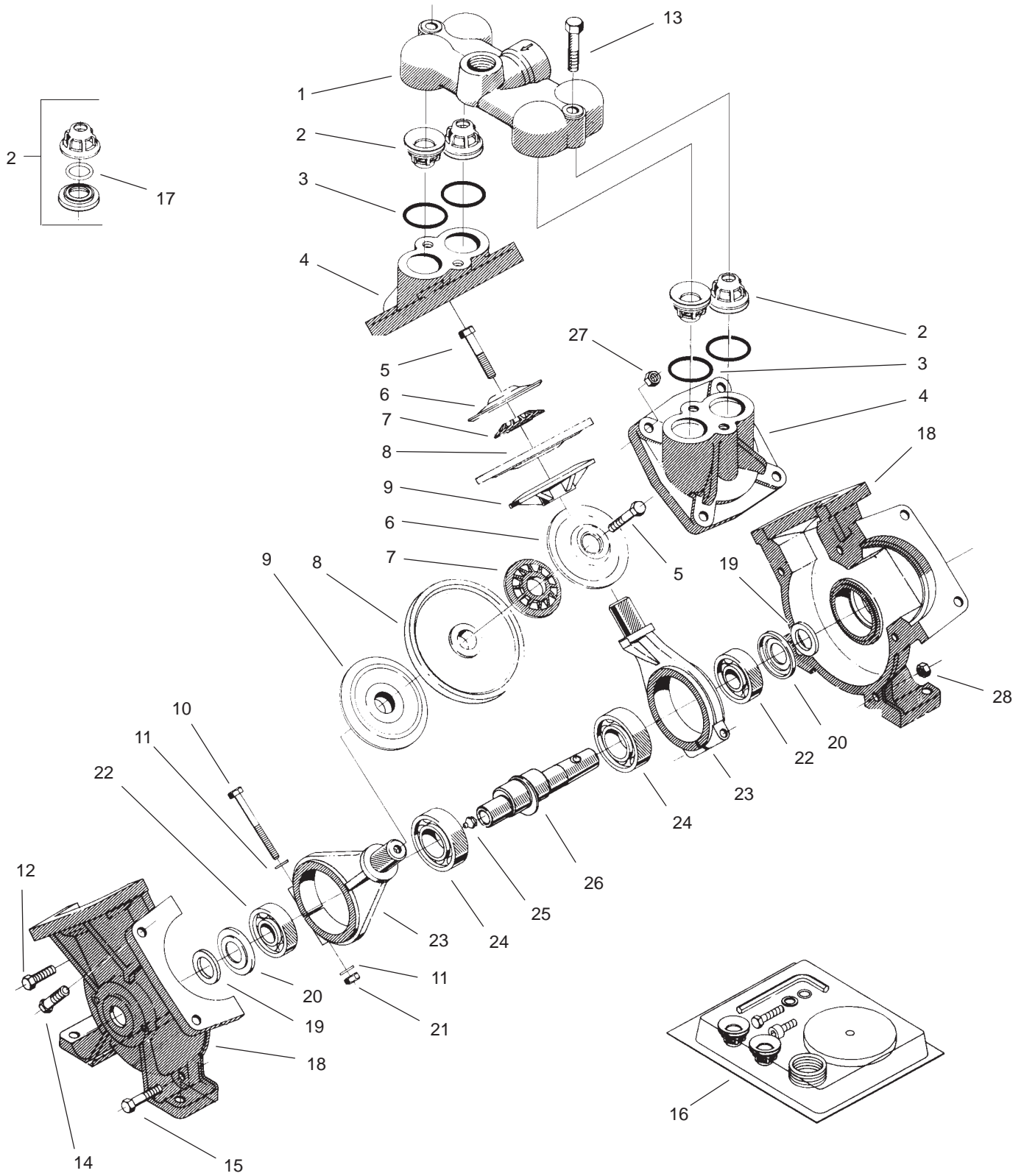
Sheet No.:21

Electrical Panel Assembly

Ref. No.	Part No.	Qty.	Description
1	32105-13	4	Screw-SHH
2	42863	1	Strip-Jumper
3	42862	1	Terminal Block-Ground
4	3217-26	4	Nut-Hex
5	100-8441-03	1	Panel-Electrical
6	3234-5	3	Screw
7	32144-70	3	Screw-HH
8	100-7025-03	1	Shield Front Heat ASM
9	100-7027	1	Trim
11	3253-17	4	Washer-Lock/Sp
12	99-3703	1	Module-Cruise
13	92-0034	3	Boot-Terminal
14	32128-33	7	Nut-HF
15	94-7079	1	Solenoid-Accessory
16	321-3	7	Screw-HH
17	70-1480	5	Relay
18	3219-14	1	Nut-Hex
19	3219-2	2	Nut-Hex
20	3255-8	2	Washer-Lock
21	104-8872	1	Harness-Wire, Main Vehicle
22	3234-26	2	Screw
23	104-8937	1	Harness-Wire, Spray System

Ref. No.	Part No.	Qty.	Description
24	104-9054	3	Holder-Fuse
25	3290-379	3	Tie-Cable

Pump Assembly No. 104-9170



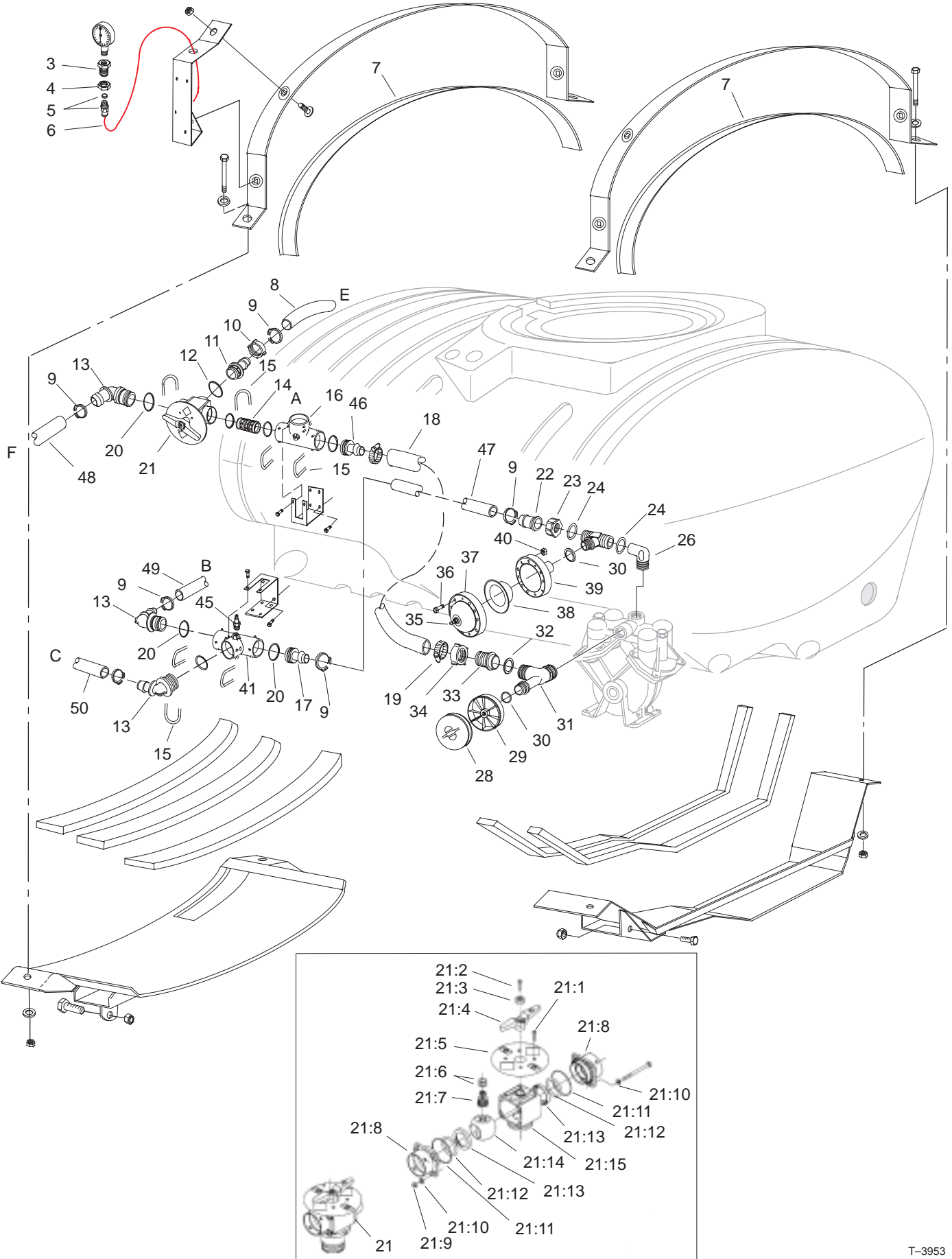
Pump Assembly No. 104-9170 (Continued)

Ref. No.	Part No.	Qty.	Description
1	100-8306	1	Chamber- Valve
†2	100-8307	4	Valve
†3	100-6652	4	O-Ring
4	100-8309	2	Cover-Diaphragm
†5	100-8310	2	Bolt
†6	100-8311	2	Washer
†7	100-8312	2	Washer-Nylon
†8	100-8313	2	Diaphragm
9	100-8314	2	Disc-Back, Diaphragm
10	100-8315	2	Bolt
11	100-8316	4	Washer-Lock
12	100-8317	3	Bolt
13	100-8335	2	Bolt
14	100-8319	8	Bolt
15	100-8320	2	Bolt
16	100-8337	1	Pump Kit (Parts included shown with †)
17	100-8336	4	O-Ring, Poly
18	100-8323	2	Casing-Pump
19	99-0868	2	Felt-Seal
20	100-8325	2	Plate-Dust
21	100-8326	2	Nut
22	100-8327	2	Bearing-Ball
23	100-8328	2	Rod-Connecting
24	100-8329	2	Bearing-Ball
25	99-0873	1	Fitting-Grease
26	104-9052	1	Crankshaft-Keyed
27	100-8334	8	Nut
28	100-8333	5	Nut

Ref. No.	Part No.	Qty.	Description

† Parts included in Pump Kit 100-8337

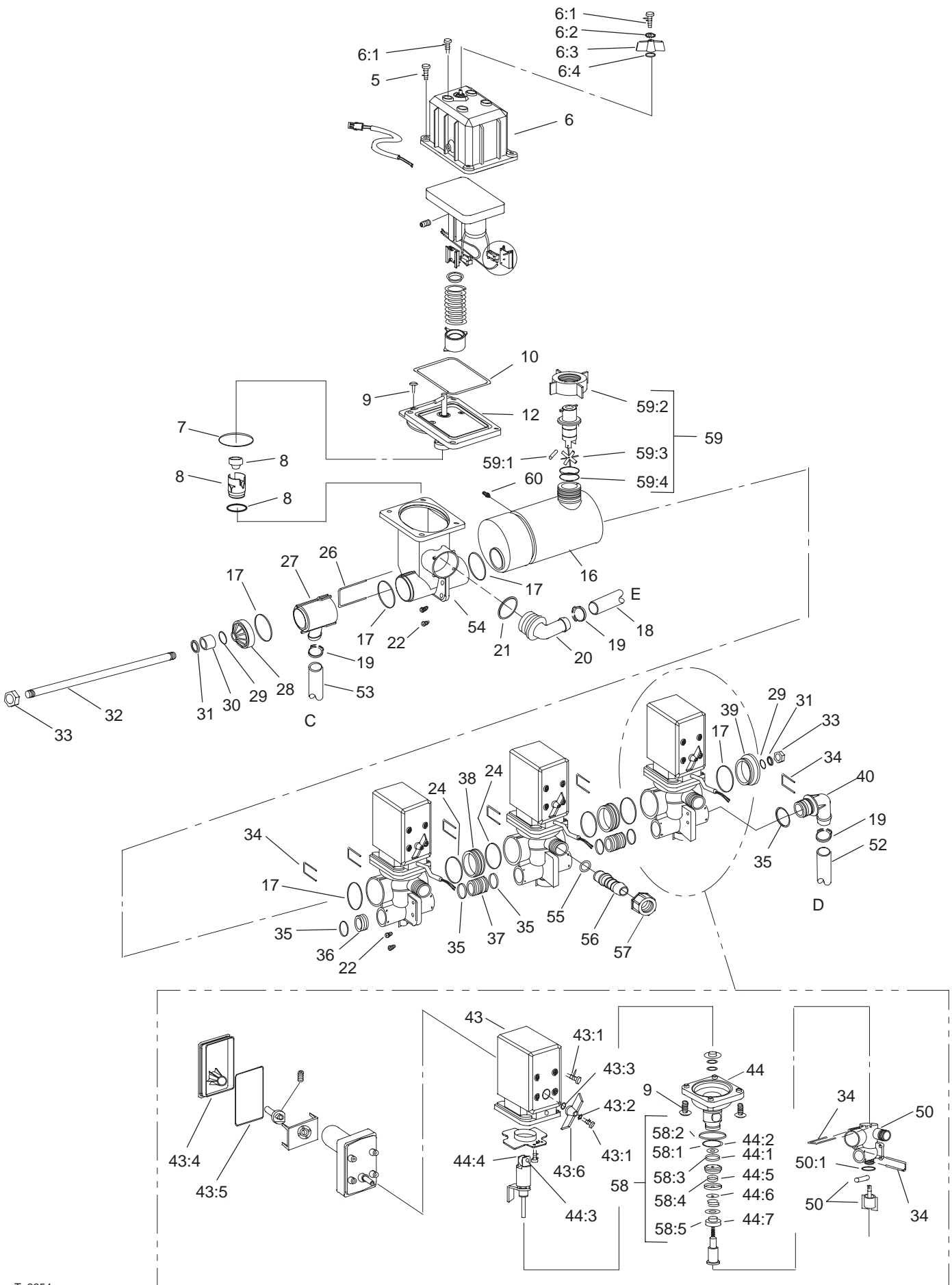
Tank and Saddle Assembly



Tank and Saddle Assembly (Continued)

Ref. No.	Part No.	Qty.	Description	Ref. No.	Part No.	Qty.	Description
3	100-8665	1	Reducer	47	104-8712	1	Hose
4	100-8666	1	Nut	48	104-8908	1	Hose
5	100-8667	1	Coupler	49	104-8710	1	Hose
6	104-8989	1	Tube	50	106-1318	1	Hose
7	104-8781	2	Strap-Insulator				
8	104-8711	1	Hose				
9	99-0782	6	Clamp-Hose				
10	100-8669	1	Nut				
11	100-8670	1	Hosebarb				
12	100-8671	1	O-Ring				
13	106-4933	3	Hosebarb				
14	106-4947	1	Connector				
15	100-8635	7	Fork				
16	100-6704	1	Tee				
17	106-4932	1	Hosebarb				
18	100-8484	1	Hose				
19	41327	2	Clamp				
20	100-8637	1	O-Ring				
21	100-8673	1	Valve Agitation ASM				
21:1	100-8689	4	Screw-Plastic				
21:2	100-8688	1	Screw-Plastic				
21:3	100-8682	1	Button-Black				
21:4	100-8683	1	Handle-Valve				
21:5	100-8684	1	Disc				
21:6	100-8685	2	O-Ring				
21:7	100-8686	1	Spindle-Valve				
21:8	100-8687	2	Cover-End, Valve				
21:9	48-7900	4	Nut-Lock				
21:10	100-8692	8	Washer				
21:11	100-8693	2	O-Ring				
21:12	100-8694	2	O-Ring				
21:13	100-8695	2	Seat-Ball				
21:14	100-8697	1	Ball-Valve, 3-Way				
21:15	100-8696	1	Housing-Valve, 3-Way				
22	99-0781	1	Hosebarb				
23	99-0769	1	Nut				
24	100-6655	2	Gasket				
25	100-8699	1	Tee				
26	100-8698	1	Elbow				
28	99-0899	1	Diaphragm-Damper, Suction				
29	100-6600	1	Housing-Damper, Suction				
30	100-6656	2	O-Ring				
31	100-8681	1	Tee				
32	100-8680	1	Seal				
33	100-8679	1	Hosebarb				
34	100-8678	1	Nut				
35	99-0895	1	Valve-Air				
36	48-7730	12	Bolt				
37	99-0896	1	Damper-Pressure, Upper				
38	99-0897	1	Diaphragm-Damper, Pressure				
39	99-0898	1	Damper-Pressure, Lower				
40	48-7930	12	Nut				
41	100-8675	1	Tee				
45	100-7045	1	Plug				
46	106-4936	1	Hosebarb				

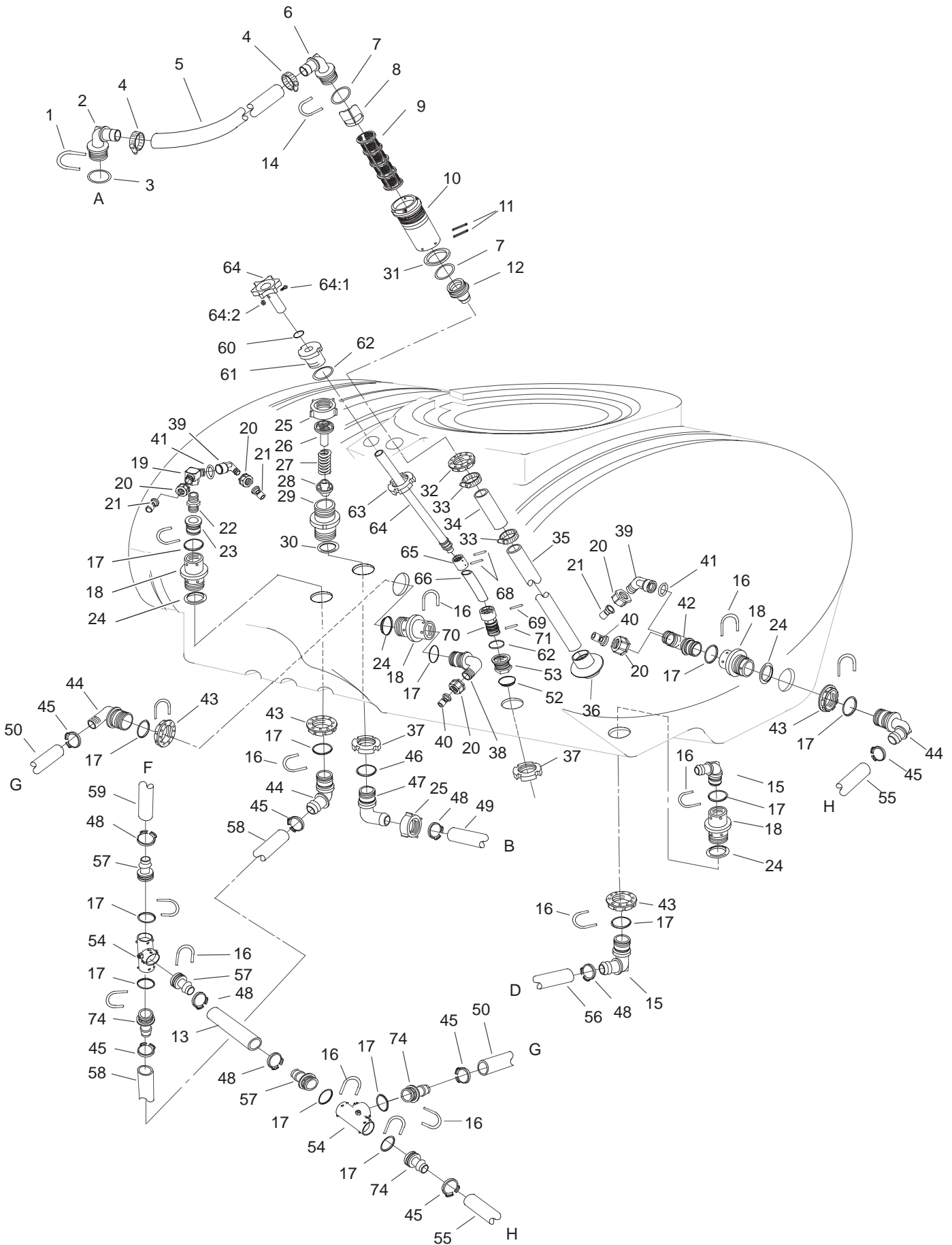
Spray Controls



Spray Controls (Continued)

Ref. No.	Part No.	Qty.	Description	Ref. No.	Part No.	Qty.	Description
5	100-6918	4	Screw-Plastic	55	100-6645	3	O-Ring
6	100-6902	1	Rate Control Motor ASM	56	106-5112	3	Hosebarb
6:1	100-6876	20	Screw	57	99-0850	3	Nut
6:2	100-6877	4	Washer-Lock	58	100-6883	3	Seal Kit-Boom Section Valve
6:3	100-6903	1	Handgrip	58:1	100-8653	5	O-Ring
6:4	100-6880	4	O-Ring	58:2	100-6882	9	O-Ring
7	100-6904	1	O-Ring	58:3	100-6879	3	O-Ring
8	100-6905	1	Repair Kit	58:4	100-6878	3	O-Ring
9	100-6917	16	Screw-Plastic	58:5	100-6881	3	Cone
10	100-6901	1	Gasket	59	100-6900	1	Flow Sensor ASM
12	100-6899	1	Rate Valve Spindle Section ASM	59:1	100-6906	1	Shaft-Rotor
16	100-6920	1	Housing-Flowmeter	59:2	100-8678	1	Nut
17	100-6892	5	O-Ring	59:3	100-6919	1	Rotor-Flowmeter
18	104-8711	1	Hose	59:4	100-8653	5	O-Ring
19	99-0782	3	Clamp-Hose	60	100-8674	1	Coupler
20	100-6898	1	Hosebarb				
21	100-8671	1	O-Ring				
22	100-6916	6	Screw-Plastic				
24	100-6646	4	O-Ring				
26	100-6907	1	Fork				
27	100-6908	1	T-Piece				
28	100-6913	1	Cover				
29	100-6887	5	O-Ring				
30	100-6897	1	Bushing				
31	100-6634	2	Washer				
32	100-6909	1	Rod				
33	100-6894	2	Nut				
34	100-6885	9	Fork				
35	100-6882	9	O-Ring				
36	100-6891	1	Endcap				
37	100-6890	2	Joiner				
38	100-6896	2	Joiner				
39	100-6915	1	Endcap				
40	100-6893	1	Hosebarb				
43	100-6923	3	Boom Valve Motor ASM				
43:1	100-6876	20	Screw				
43:2	100-6877	4	Washer-Lock				
43:3	100-6880	4	O-Ring				
43:4	100-6874	3	Cover-Housing, Valve				
43:5	100-6912	3	Cover-Seal				
43:6	100-6875	3	Handgrip				
44	100-6899	3	Boom Valve Spindle Section ASM				
44:1	100-8653	5	O-Ring				
44:2	100-6882	9	O-Ring				
44:3	100-6911	3	Roller-Pin				
44:4	100-6910	3	Roller-Bearing				
44:5	100-6879	3	O-Ring				
44:6	100-6878	3	O-Ring				
44:7	100-6881	3	Cone				
50	100-6888	3	Boom Valve Manifold ASM				
50:1	100-6887	1	O-Ring				
52	104-9037	1	Hose				
53	104-8713	1	Hose				
54	100-6914	1	Housing-Valve, Rate Control				

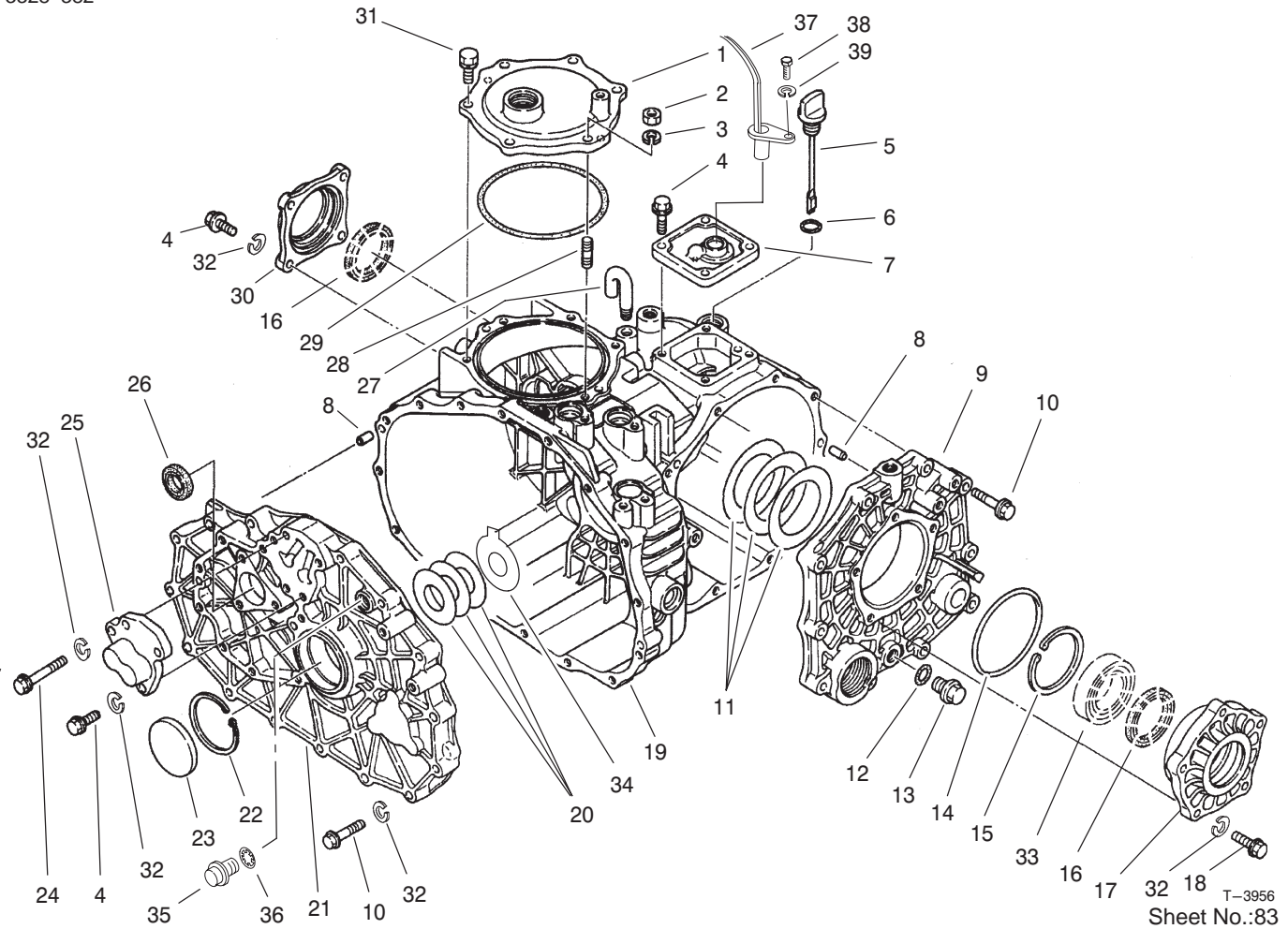
Spray System



Spray System (Continued)

Ref. No.	Part No.	Qty.	Description	Ref. No.	Part No.	Qty.	Description
1	100-8635	1	Fork	57	106-4935	3	Hosebarb
2	106-4946	1	Hosebarb	58	104-9043	1	Hose
3	100-8637	1	O-Ring	59	104-8908	1	Hose
4	41327	2	Clamp-Hose	60	100-6643	1	O-ring
5	100-8483	1	Hose	61	106-1240	1	Bulkhead
6	106-4952	1	Hosebarb-Red	62	100-6658	2	O-Ring
7	100-8640	1	O-Ring	63	99-0758	1	Ringnut
8	100-8641	1	Vane-Screen	64	100-8655	1	Tube-Drain
9	100-8642	AR	50 Mesh-Screen Suction, Blue	64:1	104-9046	1	Bolt
*	100-6992	AR	80 Mesh-Screen Suction, Red	64:2	104-9047	1	Nut-Lock
*	100-6991	AR	30 Mesh-Screen Suction, Green	65	100-8657	1	Connector
10	100-8643	1	Housing-Filter	66	100-8658	1	Tube-Flex
11	100-8644	2	Pin-Expansion	68	100-8661	1	Pin
12	106-4942	1	Hosebarb	69	100-8660	1	Pin
13	104-9039	1	Hose	70	100-8662	1	Screw-Drain
14	100-8636	1	Fork	71	100-8663	1	Pin
15	106-4945	2	Hosebarb	74	106-4939	3	Hosebarb
16	100-6708	14	Fork				
17	100-6712	14	O-Ring/Gasket				
18	106-4896	4	Bulkhead				
19	100-6723	1	Tee				
20	99-0766	5	Nut				
21	100-6705	3	Nozzle				
22	100-6722	1	Nipple				
23	106-4943	1	Adapter				
24	100-6710	4	Gasket-Bulkhead				
25	100-8678	2	Nut				
26	100-6724	1	Seat-Valve				
27	100-6725	1	Spring				
28	100-6726	1	Cone-Valve				
29	100-6727	1	Housing-Relief, Valve				
30	100-6652	1	Gasket				
31	100-8646	1	Gasket-Bulkhead				
32	100-8647	1	Nut				
33	26392	2	Clamp-Hose				
34	100-8649	1	Hose-Suction				
35	100-6990	1	Tube-Suction				
36	100-6714	1	Foot-Tube, Suction				
37	99-0761	2	Ringnut				
38	106-4944	2	Elbow				
39	99-0768	1	Elbow				
40	100-6706	2	Nozzle				
41	100-6653	2	O-Ring				
42	100-6707	1	Tee				
43	100-6713	4	Nut				
44	106-4940	3	Hosebarb				
45	99-0755	6	Clamp-Hose				
46	100-6646	1	O-Ring				
47	106-4949	1	Hosebarb				
48	99-0782	5	Clamp-Hose				
49	104-8710	1	Hose				
50	104-8704	1	Hose				
52	100-8659	1	Gasket-Bulkhead				
53	100-8664	1	Bulkhead				
54	104-9041	2	Tee				
55	104-8706	1	Hose				
56	104-9037	1	Hose				

* Not illustrated

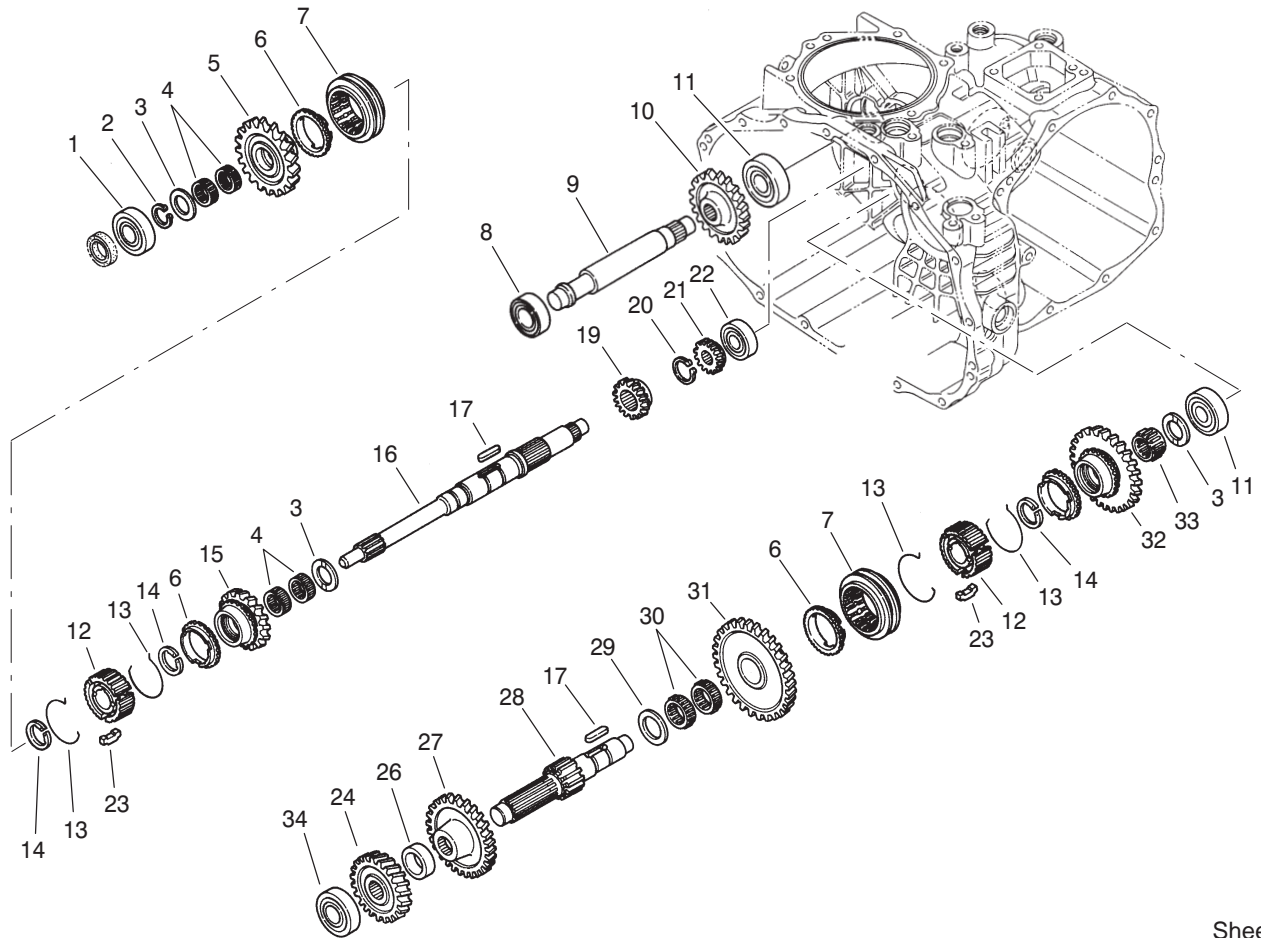


Transaxle Case Assembly Transaxle Assembly No. 104-9078

Ref. No.	Part No.	Qty.	Description
1	100-8595	1	Cover-PTO
2	48-7930	1	Nut
3	92-0762	1	Washer-Spring
4	33114-025	11	Screw-HH
5	92-0662	1	Cap-Oil
6	92-0788	1	O-Ring
7	92-0810	1	Cover-Upper, Sensor
8	92-0765	4	Pin-Parallel
9	92-0653	1	Cover-Side
10	33114-040	25	Screw-HH
11	92-0809	1	Set-Shim
12	92-0787	1	O-Ring
13	92-0773	1	Plug-Drain
14	92-0789	1	O-Ring
15	92-0760	1	Ring-Snap
16	92-0793	2	Seal-Oil
17	92-0654	1	Carrier-Differential
18	48-7730	5	Screw-HH
19	92-0651	1	Case-Transmission
20	100-4460	1	Shim Set
21	100-4461	1	Plate-Center
22	92-0759	1	Ring-Snap
23	92-0807	1	Cap-Sealing
24	48-7560	1	Bolt-HH

Ref. No.	Part No.	Qty.	Description
25	92-0706	1	Shaft-Fork
26	92-0791	1	Seal-Oil
27	92-0743	1	Breather-Air
28	92-0804	1	Stud
29	92-0790	1	O-Ring
30	92-0655	1	Cover-Seal, Axle
31	92-0796	5	Bolt
32	3253-4	42	Washer-Lock
33	92-0775	2	Bearing
34	100-4465	1	Shim (W/Tab)
35	100-6924	1	Plug
36	100-6925	1	Packing
37	85-4350	1	Sensor-Geartooth
38	48-7610	1	Screw
39	48-8020	1	Washer-Spring
*99	100-6928	1	Bolt
*99	100-8594	1	Cover-Input Shaft

* Not illustrated

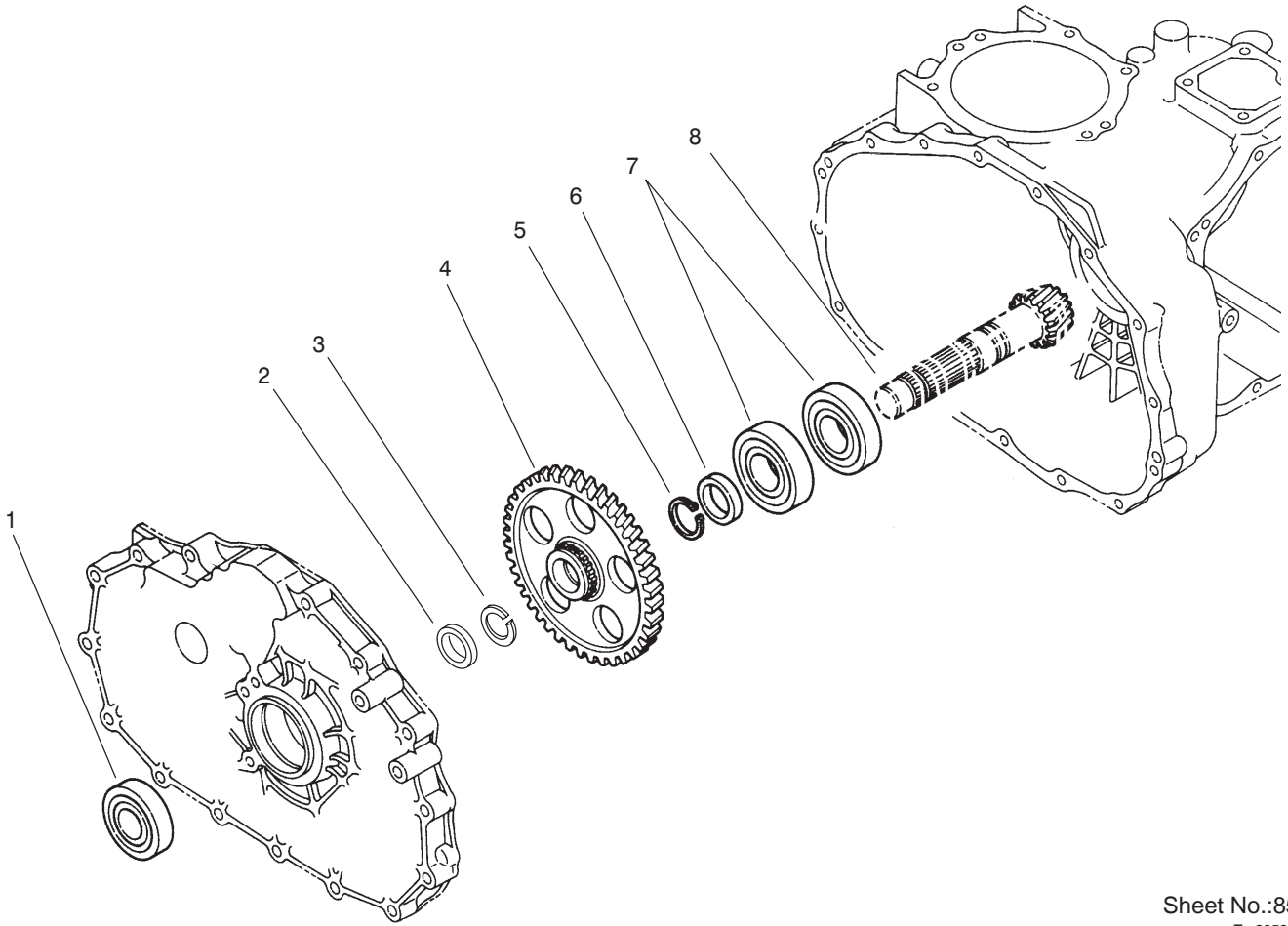


Sheet No.:84
T-3957

Transaxle Gear Shaft Assembly Transaxle Assembly No. 104-9078

Ref. No.	Part No.	Qty.	Description
1	251-8	1	Bearing-Ball
2	92-0753	1	Ring-Snap
3	92-0740	3	Washer-Thrust
4	92-0781	4	Bearing-Needle
5	100-8597	1	Gear-Main, 36 Tooth
6	92-0667	3	Ring-Synchro
7	92-0668	2	Shifter-Synchro
8	251-346	2	Bearing-Ball
9	100-8602	1	Shaft-Idler, Rev
10	92-0684	1	Gear-Reverse, 33 Tooth
11	92-0778	2	Bearing
12	92-0664	2	Hub-Synchro
13	92-0666	4	Spring-Synchro
14	92-0763	3	Ring-Snap
15	100-8598	1	Gear-Main, 20 Tooth
16	100-8596	1	Shaft-Main
17	92-0772	2	Key
19	92-0671	1	Gear-Main, 22 Tooth
20	92-0754	1	Ring-Snap
21	92-0673	1	Gear-Main, 14 Tooth
22	92-0650	1	Bearing
23	92-0665	6	Key-Synchro

Ref. No.	Part No.	Qty.	Description
24	92-0676	1	Gear-Reduction, 32 Tooth
26	100-8601	1	Collar
27	92-0819	1	Gear-Reduction, 40 Tooth
28	92-0674	1	Shaft-Reduction
29	92-0682	1	Washer-Thrust
30	92-0681	2	Bearing-Needle
31	100-8599	1	Gear-Red, 25 Tooth
32	100-8600	1	Gear-Red, 47 Tooth
33	92-0782	1	Bearing-Needle
34	105-7985	1	Bearing



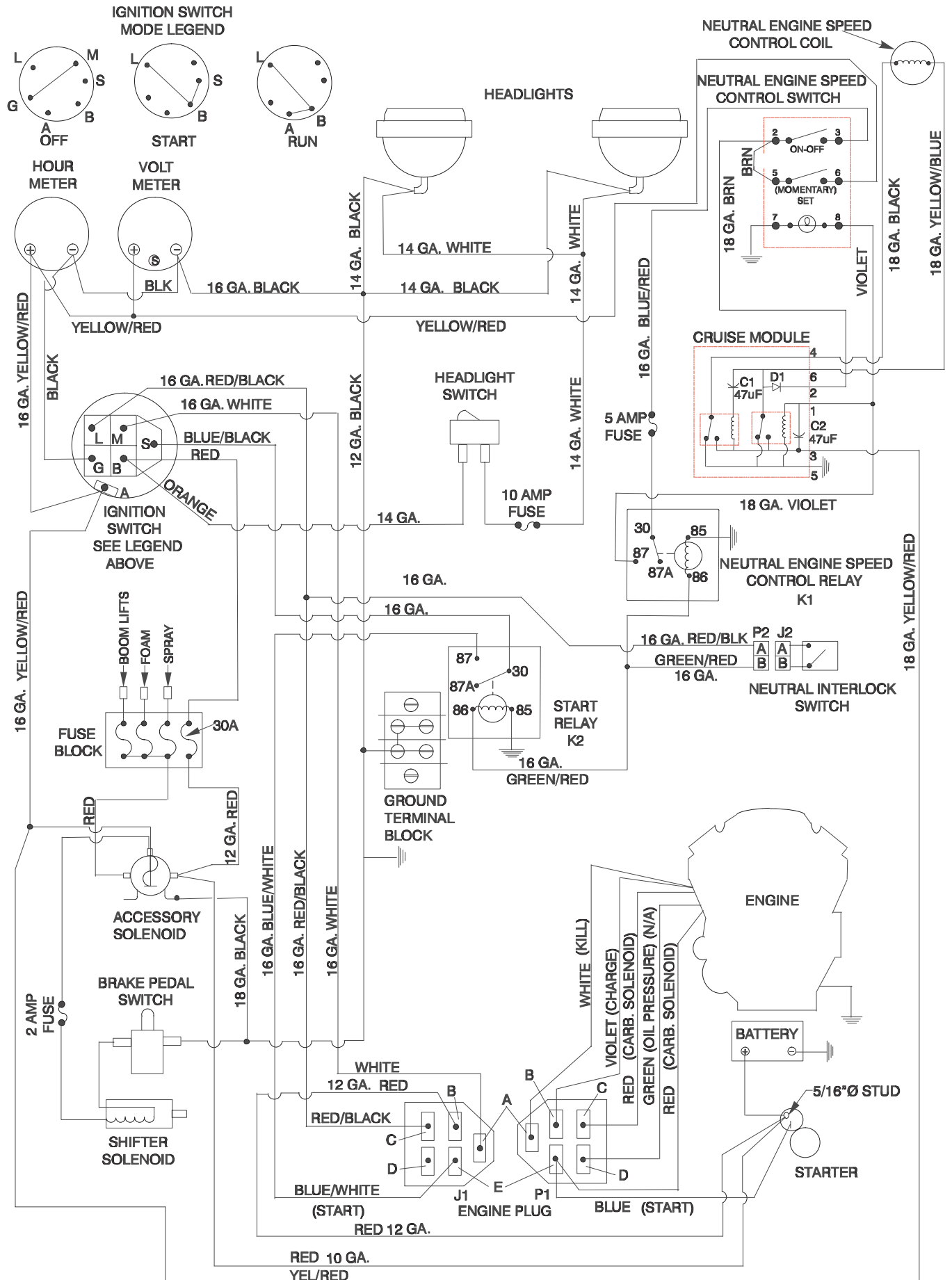
Sheet No.:85
T-3958

Countershaft Assembly Transaxle Assembly No. 104-9078

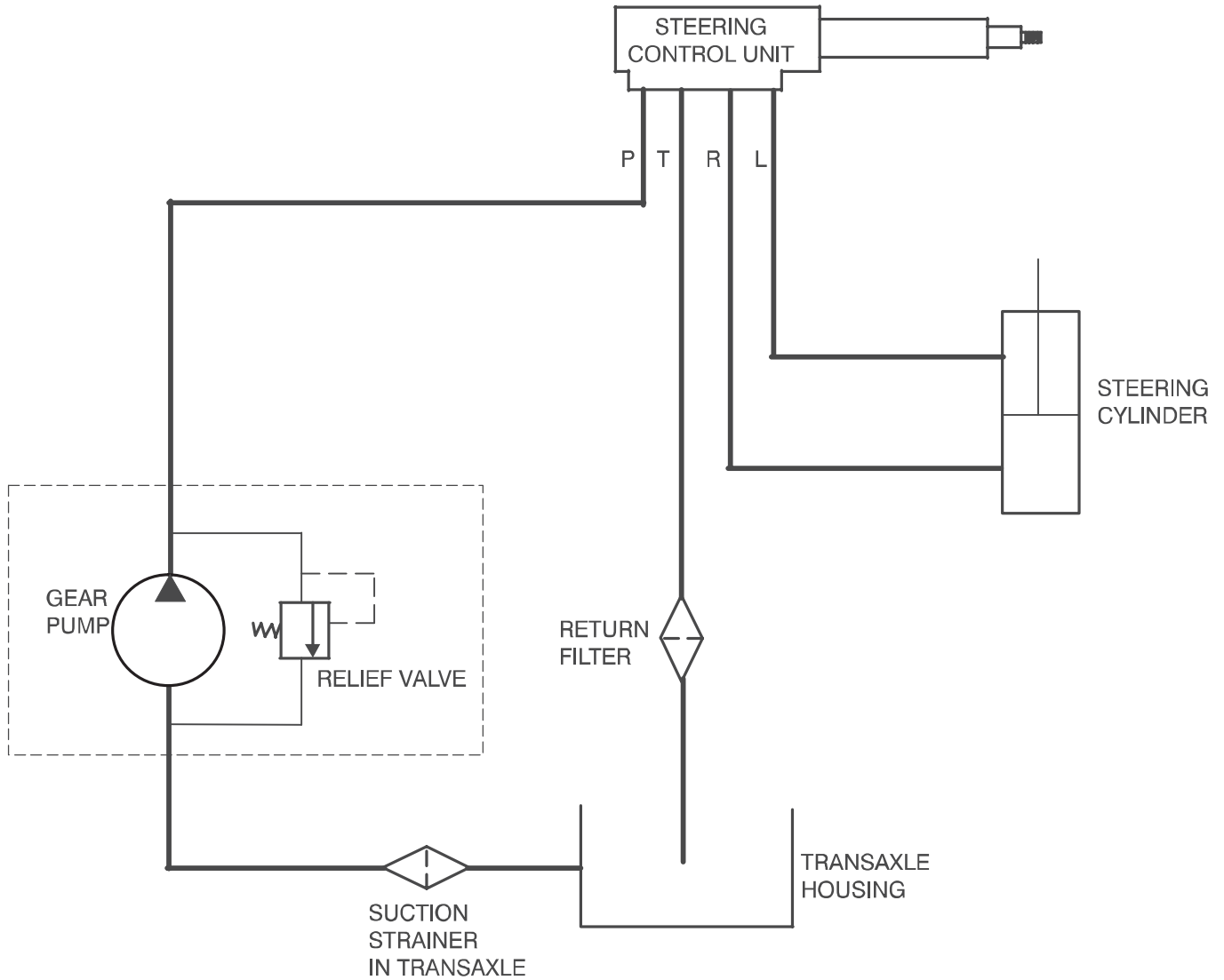
Ref. No.	Part No.	Qty.	Description
1	92-0712	1	Bearing-Ball
2	92-0716	1	Collar
3	92-0764	1	Ring-Snap
4	100-8603	1	Gear-Count
5	92-0755	1	Ring-Snap
6	92-0713	1	Collar
7	92-0714	2	Bearing
8	92-0710	1	Gear-Ring

Ref. No.	Part No.	Qty.	Description

Vehicle Electrical Schematic

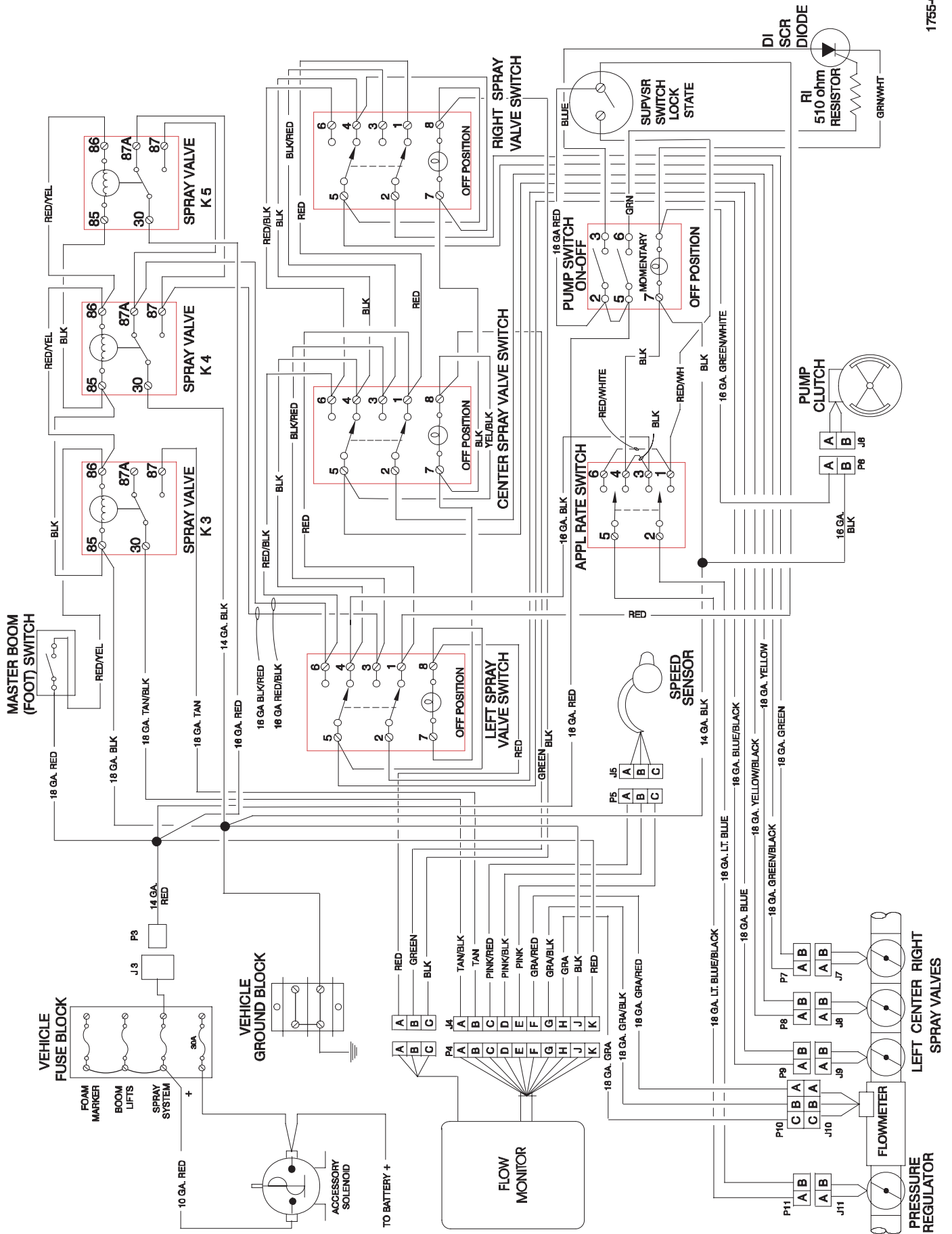


Vehicle Hydraulic Schematic



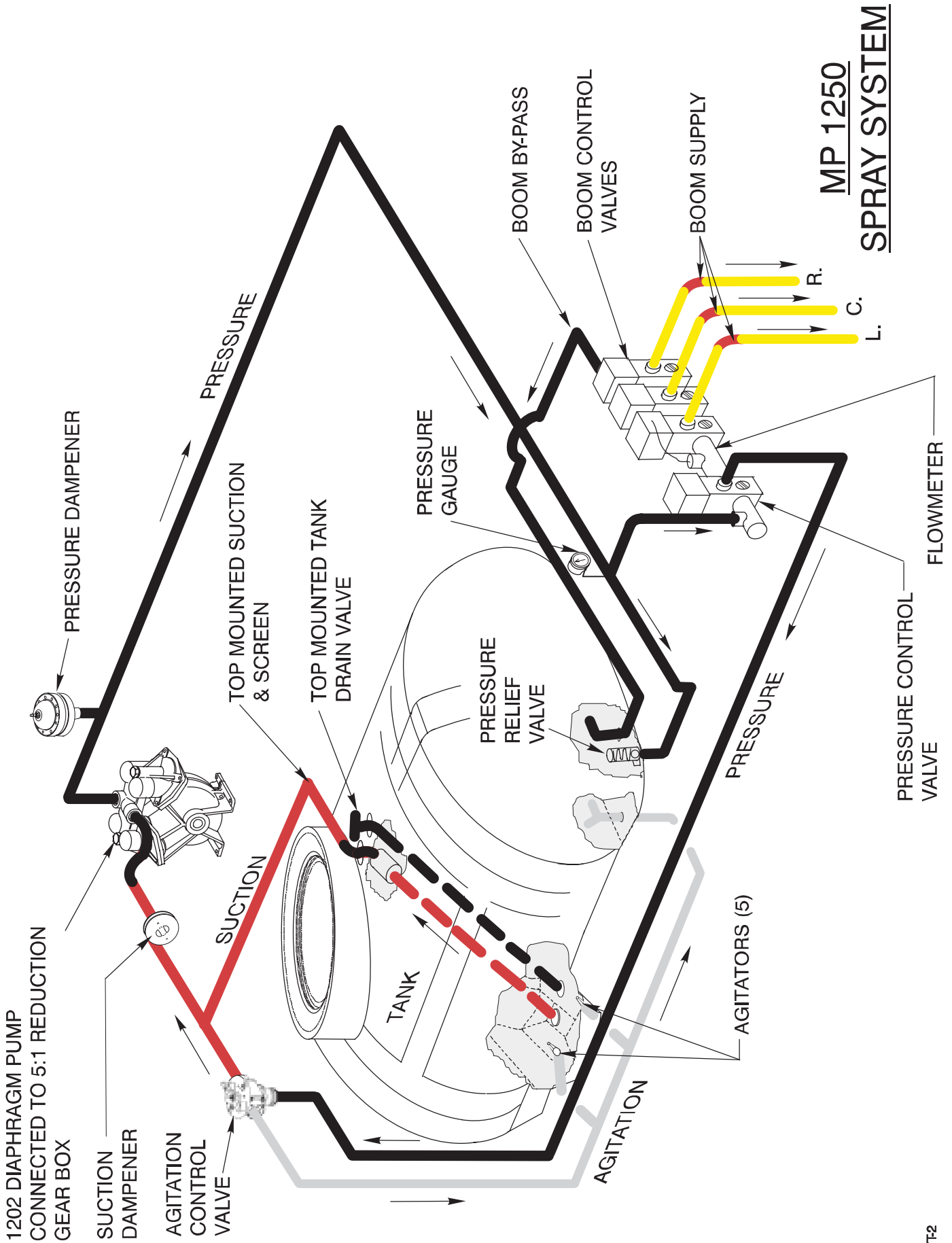
T = TANK
L = WORKING PRESSURE
R = WORKING PRESSURE
P = PRESSURE

Spray System Electrical Schematic

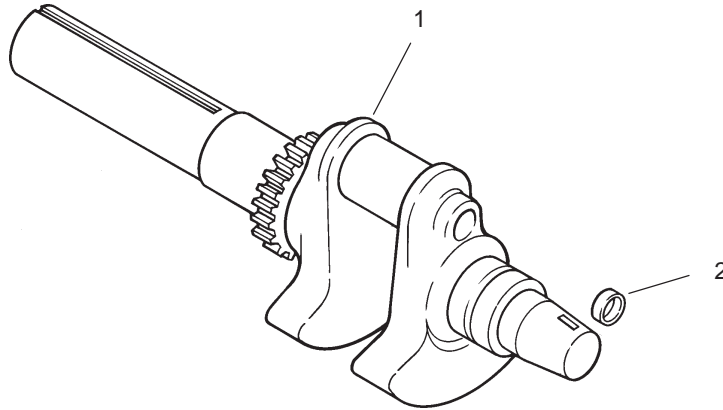


1755-CE

Spray System Flow Diagram



MP 1250
SPRAY SYSTEM

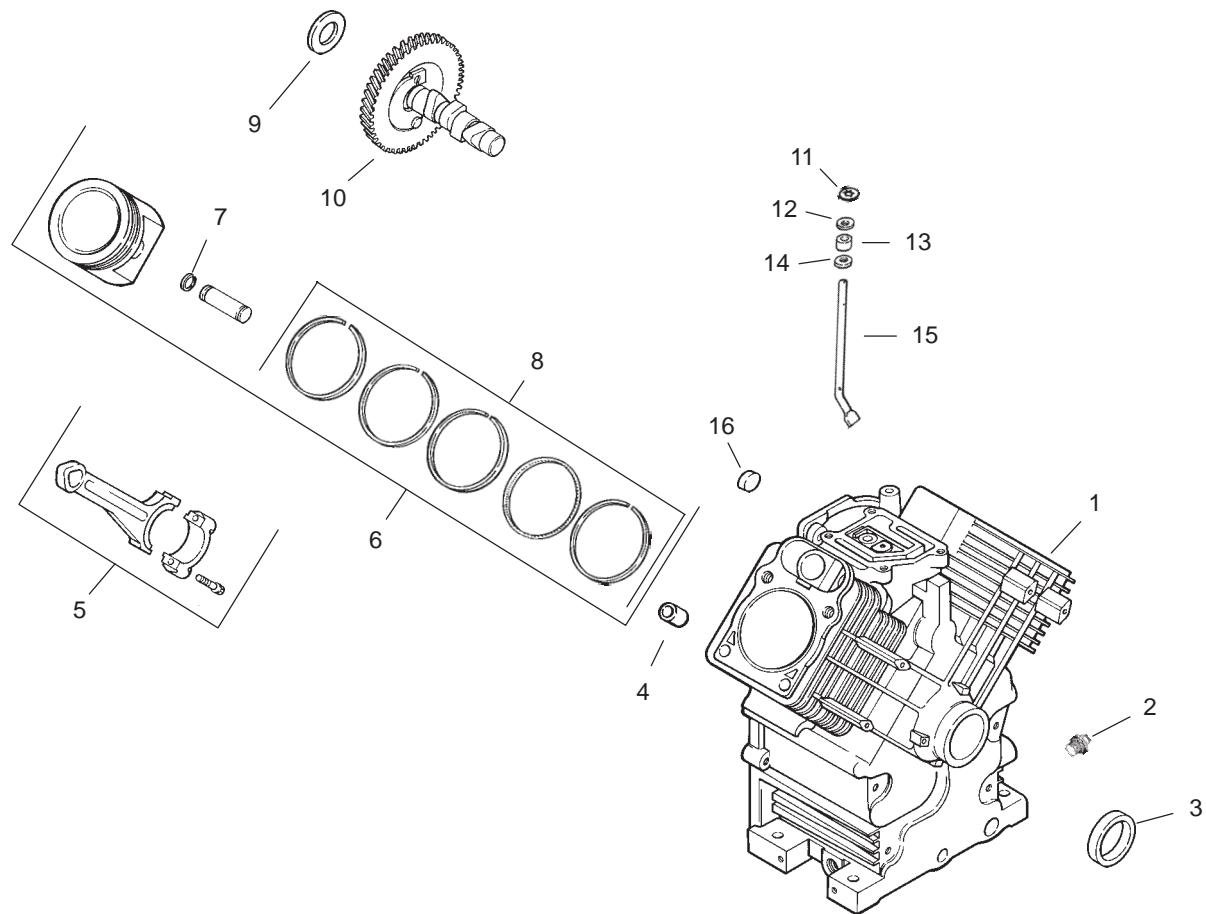


Crankshaft Assembly Kohler CH20S-64647

Ref. No.	Part No.	Qty.	Description
1	24 014 103-S	2	Crankshaft (Includes 2)
2	52 139 09-S	1	Plug, cup

Ref. No.	Part No.	Qty.	Description

Obtain Parts from Kohler

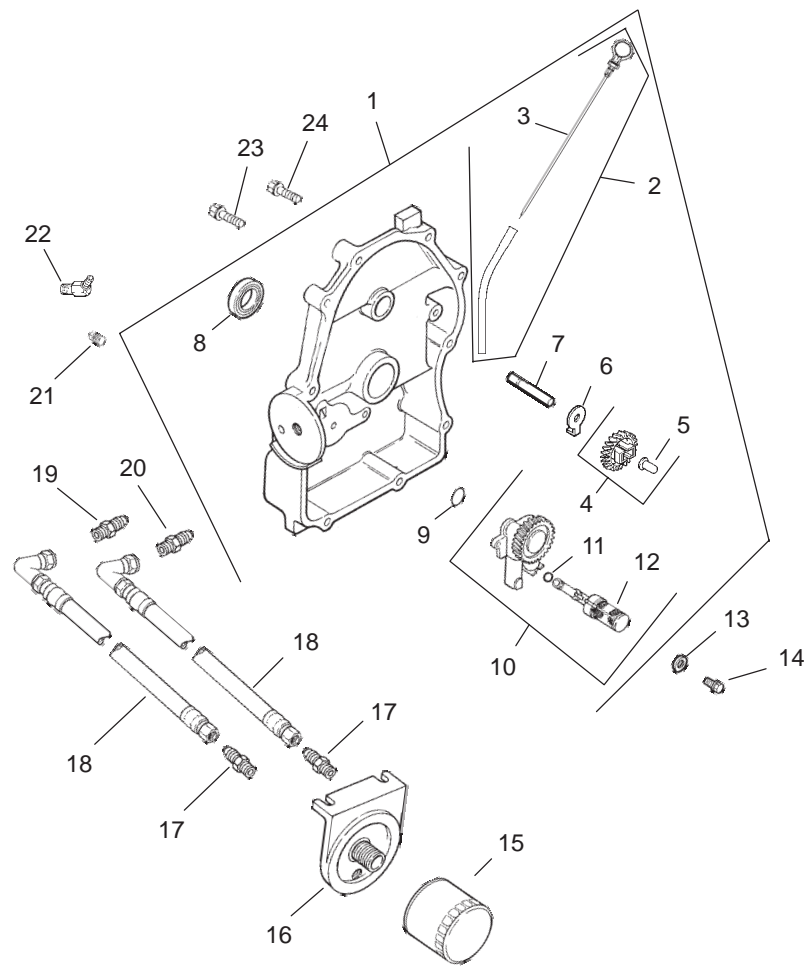


Crankcase Assembly Kohler CH20S-64647

Ref. No.	Part No.	Qty.	Description
1		1	Cylinder Block (Use Miniblock 24 782 15)
2	25 139 57-S	2	Plug, sq. hd. 3/8
3	24 032 01-S	1	Seal, front oil
4	24 380 13-S	6	Pin, locating
5	24 067 13-S	2	Connecting Rod (Std.)
	24 067 14-S	2	Connecting Rod (.25)
6	24 874 17-S	2	Piston w/Ring Set (Std.) (Includes 7,8)
	24 874 14-S	2	Piston w/Ring Set (.08)
	24 874 18-S	2	Piston w/Ring Set (.25)
	24 874 19-S	2	Piston w/Ring Set (.50)
7	24 018 01-S	4	Retainer, piston pin
8	24 108 11-S	2	Ring Set (Std. & .08)
	24 108 12-S	2	Ring Set (.25)
	24 108 13-S	2	Ring Set (.50)
9	12 422 09-S	A/R	Shim, camshaft-red
	12 422 13-S	A/R	Shim, camshaft-black
	12 422 07-S	A/R	Shim, camshaft-white
	12 422 08-S	A/R	Shim, camshaft-blue
	12 422 10-S	A/R	Shim, camshaft-yellow
	12 422 11-S	A/R	Shim, camshaft-green
	12 422 12-S	A/R	Shim, camshaft-gray

Ref. No.	Part No.	Qty.	Description
10	24 012 10-S	1	Camshaft
11	24 018 09-S	1	Ring, retainer
12	M-931010-S	1	Washer, plain 9 mm
13	28 032 09-S	1	Seal, governor cross shaft
14	24 468 15-S	1	Washer, plain 1/4
15	24 144 33-S	1	Shaft, governor cross
16	52 139 09-S	1	Plug, cup

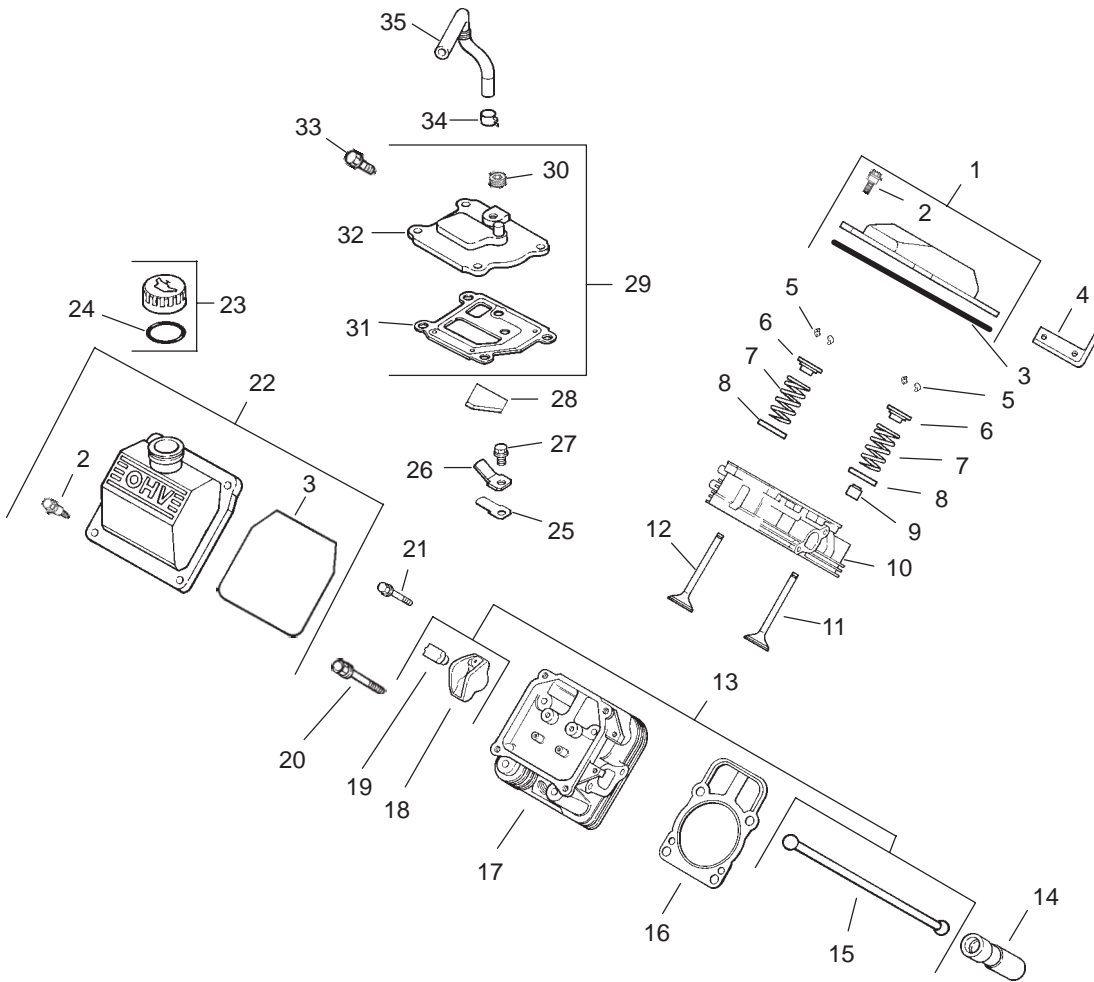
Obtain Parts from Kohler



Oil Pan / Lubrication Assembly Kohler CH20S-64647

Ref. No.	Part No.	Qty.	Description	Ref. No.	Part No.	Qty.	Description
1	24 009 96-S	1	Plate, closure asm (Includes 2-12, 19, 20, 22)	18	24 326 46-S	2	Hose, oil
2	24 755 121-S	3	Kit, dipstick w/tube (Includes 3)	19	24 294 08-S	1	Fitting, connector
3	24 038 10-S	1	Dipstick	20	24 294 09-S	1	Fitting, connector
4	24 043 12-S	5	Kit, governor gear (Includes 5)	21	25 155 11-S	1	Connector, hose 45
5	12 380 01-S	1	Pin, governor regulating	22	24 086 16-S	9	Screw, hex. flange M8x1.25x45
6	52 448 02-S	1	Tab, locking	23	24 086 17-S	1	Screw, hex. flange M8x1.25x45
7	12 144 02-S	1	Shaft, governor gear			2	Not Illustrated Tie, wire
8	52 032 08-S	1	Seal, oil (PTO end)		25 454 03-S		
9	24 153 08-S	1	O-Ring				
10	24 393 37-S	1	Oil pump assembly (Includes 11,12)				
11	24 153 01-S	1	O-Ring, oil pick-up				
12	24 381 04-S	1	Tube, oil pick-up				
13	M-631005-S	2	Washer, plain 6 mm				
14	M-645025-S	2	Screw, hex. flange M6x1.0x25				
15	52 050 02-S	1	Filter, oil				
16	25 029 01-S	1	Adapter, remote filter				
17	52 155 03-S	2	Connector, hose				

Obtain Parts from Kohler

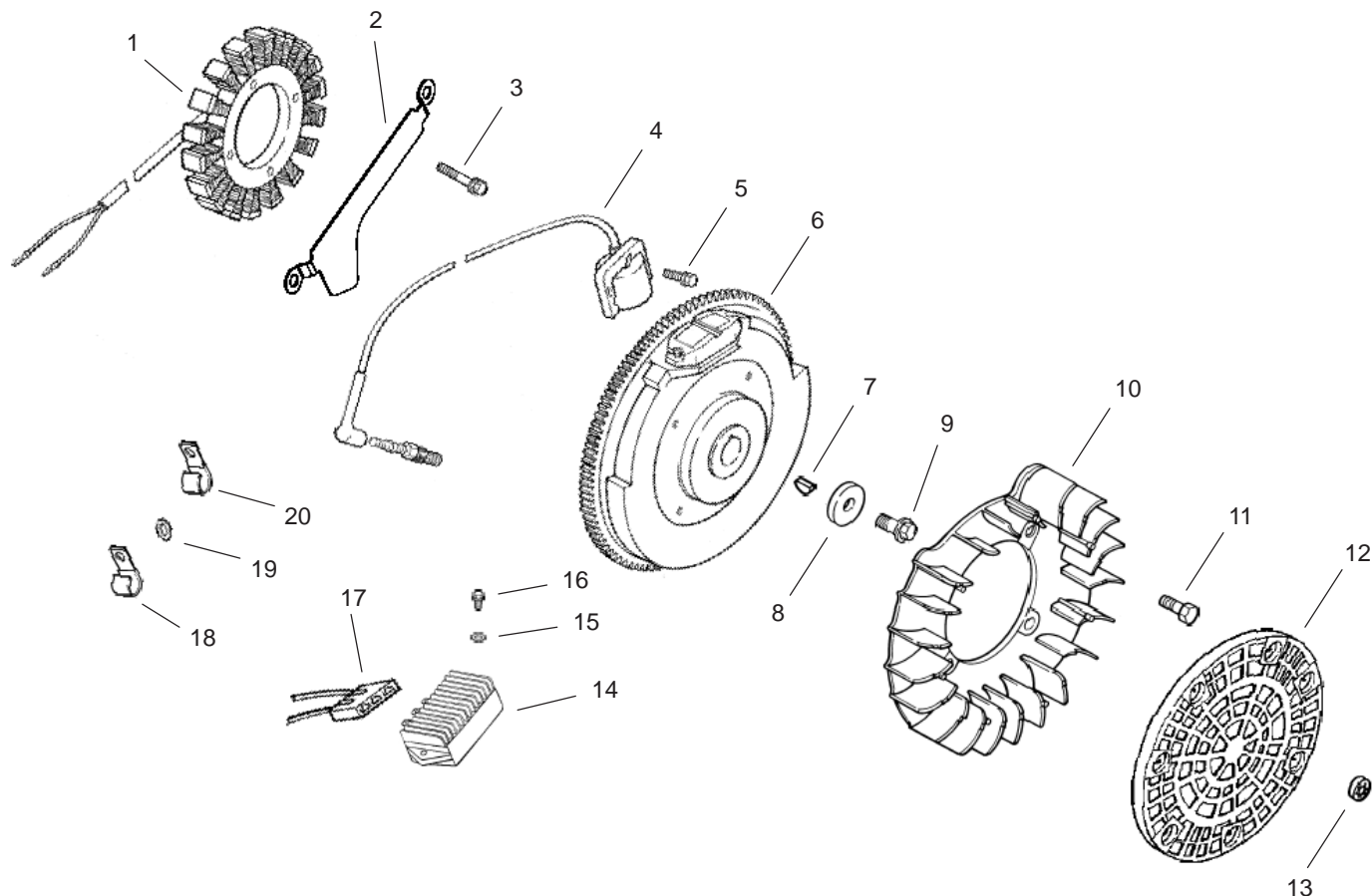


Head / Valve / Breather Assembly Kohler CH20S-64647

Ref. No.	Part No.	Qty.	Description
1	24 755 74-S	1	Kit, valve cover – plain (Includes 2,3)
2	24 086 32-S	4	Screw, shoulder
3	24 153 23-S	1	O-Ring, valve cover
4	24 445 01-S	1	Strap, lifting
5	12 755 03-S	4	Kit, retainer
6	12 173 01-S	4	Cap, valve spring
7	24 089 02-S	4	Spring, valve
8	235011-S	4	Retainer, spring
9	66 032 05-S	2	Seal, valve stem
10	24 318 68-S	1	Head assembly, #1 cylinder
11	24 017 01-S	2	Valve, intake (Std.)
	24 017 02-S	2	Valve, intake (.25)
12	24 016 01-S	2	Valve, exhaust (Std.)
	24 016 02-S	2	Valve, exhaust (.25)
13	24 755 66-S	1	Kit, valve train (Includes 15,18,19)
14	25 351 01-S	4	Lifter, valve
15	24 411 05-S	4	Rod, push
16	24 041 08-S	2	Gasket, cylinder head
17	24 318 71-S	1	Head assembly, #2 cylinder
18	25 186 01-S	4	Arm, rocker

Ref. No.	Part No.	Qty.	Description
19	24 599 01-S	4	Pivot, rocker arm
22	12 086 16-S	8	Screw, hex. flange M10x1.5x90
21	M-640034-S	4	Screw, hex. flange M6x1.0x34
22	24 559 03-S	1	Kit, fuel pump/valve cover (Includes 2,3)
23	24 755 46-S	1	Kit, oil fill cap (Includes 24)
24	25 153 02-S	1	O-Ring
25	24 402 03-S	1	Reed, breather
26	12 018 01-S	1	Retainer, breather reed
27	M-545010-S	1	Screw, hex. flange M5x0.8x10
28	24 050 01-S	1	Filter, breather
29	24 033 01-S	1	Kit, breather (Includes 30-32)
30	25 139 60-S	1	Plug, allen head 1/8 pipe
31	24 041 23-S	1	Gasket, breather
32	24 096 86-S	1	Cover, breather
33	M-645020-S	4	Screw, hex. flange
34	25 237 14-S	1	Clamp, breather
35	24 326 26-S	1	Hose, breather

Obtain Parts from Kohler

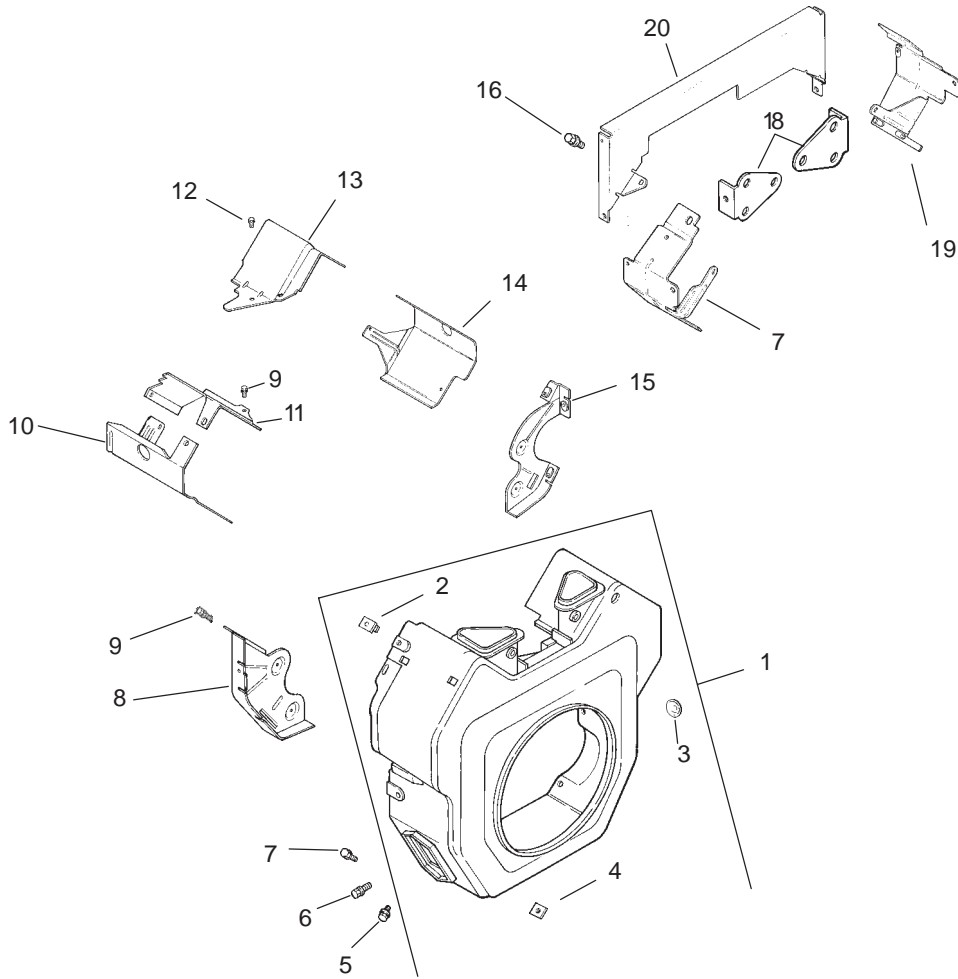


Ignition / Electrical Assembly Kohler CH20S-64647

Ref. No.	Part No.	Qty.	Description
1	28 085 02-S	1	Kit, stator w/connectors (Includes 17)
2	24 126 71-S	1	Bracket, stator wire
3	M-545030-S	2	Screw, hex. cap M5x0.8x30
4	24 584 01-S	2	Module, ignition
5	M-545020-S	4	Screw, hex. flange M5x0.8x20
6	24 025 01-S	1	Flywheel
7	X-42-15-S	1	Key
8	12 468 03-S	1	Washer, plain 3/8
9	12 086 14-S	1	Screw, hex. flange M10x1.5x46
10	24 157 01-S	1	Fan
11	25 086 47-S	4	Bolt, shoulder M6x1.0x16
12	24 162 03-S	1	Screen, grass
13	24 018 03-S	1	Retainer, grass screen
14	25 403 05-S	1	Rectifier-regulator 20 amp
15	X-25-92-S	2	Washer, plain 3/16
16	24 086 18-S	2	Screw, phillips hd. 11-16x7/8
17	236602-S	1	Connector, body

Ref. No.	Part No.	Qty.	Description
18	235173-S	1	Clip, cable
19	X-25-63-S	1	Washer, plain 1/4
20	48 154 02-S	1	Clip, cable
21	12 132 06-S	2	Spark Plug
			Not Illustrated
	24 518 12-S	1	Lead, black (5-12 ga. insulated grip barrel eyelet terminals)
	24 176 72-S	1	Harness, wiring
	X-22-11-S	1	Washer, lock 1/4 (for ground screw & wire)
	25 454 03-S	2	Tie, wire

Obtain Parts from Kohler

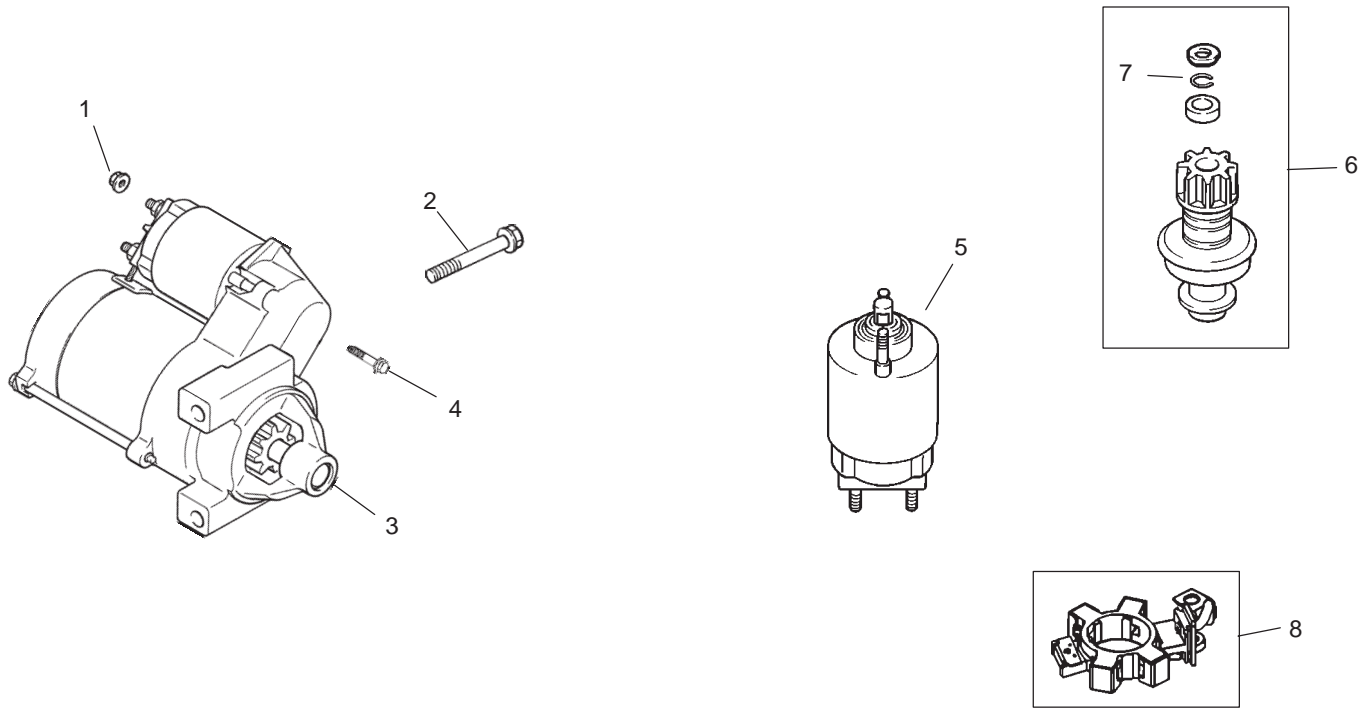


Blower Housing and Baffle Assembly Kohler CH20S-64647

Ref. No.	Part No.	Qty.	Description
1	24 027 175-S	1	Housing, blower (Includes 2-4)
2	24 100 02-S	2	Nut, plastic
3	25 139 16-S	1	Plug, button 9/16
4	24 100 01-S	3	Nut, plastic
5	M-551016-S	1	Screw, hex. flange M5x0.8x16
6	M-545016-S	3	Screw, hex. flange M5x0.8x16
7	M-545020-S	4	Screw, hex. flange M5x0.8x20
8	24 146 16-S	1	Plate, backing #2 side
9	M-645016-S	6	Screw, hex. flange M6x1.0x16
10	24 063 20-S	1	Baffle, cylinder barrel #2 side
11	24 063 17-S	1	Baffle, valley - #2 side
12	M-545010-S	2	Screw, hex. flange M5x0.8x10
13	24 063 59-S	1	Baffle, valley - #1 side
14	24 063 58-S	1	Baffle, cylinder barrel #1 side
15	24 146 20-S	1	Plate, backing

Ref. No.	Part No.	Qty.	Description
			#1 side
16	M-639010-S	4	Screw, hex. flange M6x1.0x10
17	24 063 13-S	1	Baffle, ducted air # 2 side
18	24 126 04-S	2	Bracket, support
19	24 063 12-S	1	Baffle, ducted air #1 side
			Not Illustrated
	24 113 12-S	1	Decal, HP

Obtain Parts from Kohler

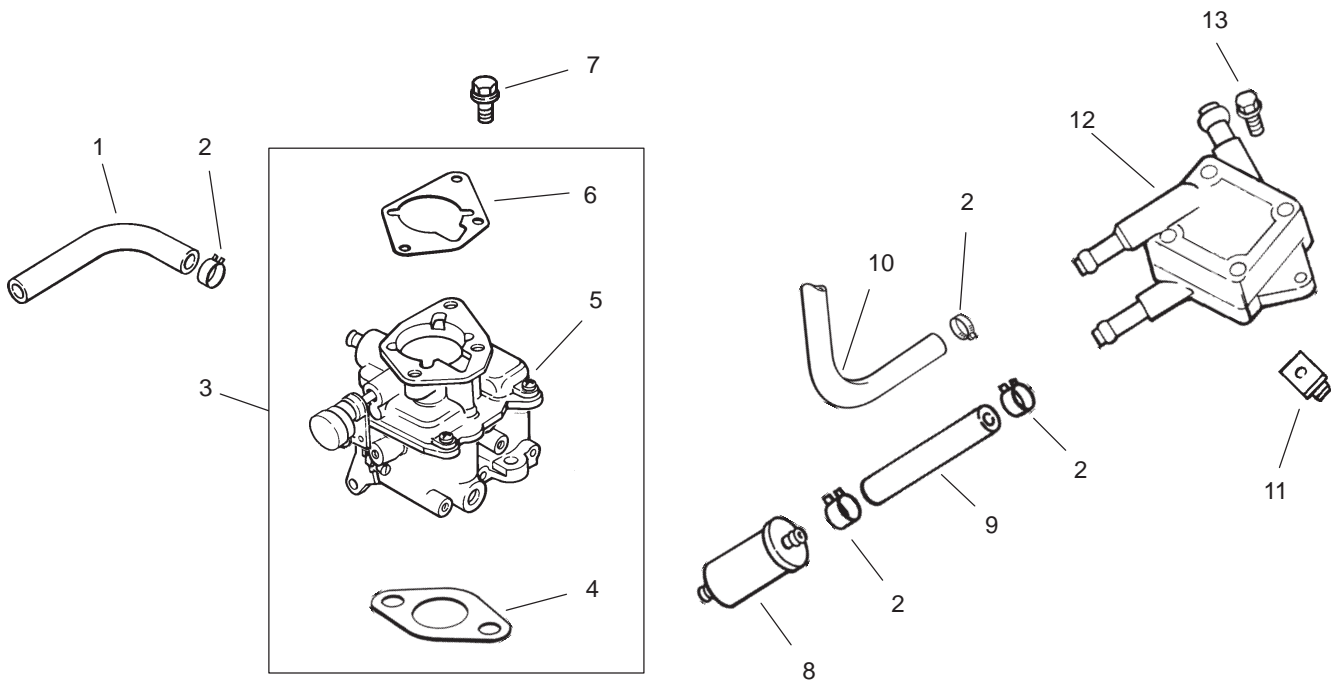


Starting System Kohler CH20S-64647

Ref. No.	Part No.	Qty.	Description
1	M-841080-S	1	Nut, hex flange M8x1.25
2	M-839080-S	2	Screw, hex. flange M8x1.25x80
3	24 098 09-S	1	Starter, solenoid shift asm (Includes 4-18)
4	25 086 113-S	3	Screw, ext. torx hd.
5	25 435 05-S	4	Kit, solenoid (Includes 4)
6	25 755 33-S	7	Kit, pinion drive (Includes 7)
7	25 141 05-S	1	Ring
8	25 221 01-S	1	Kit, brush

Ref. No.	Part No.	Qty.	Description

Obtain Parts from Kohler

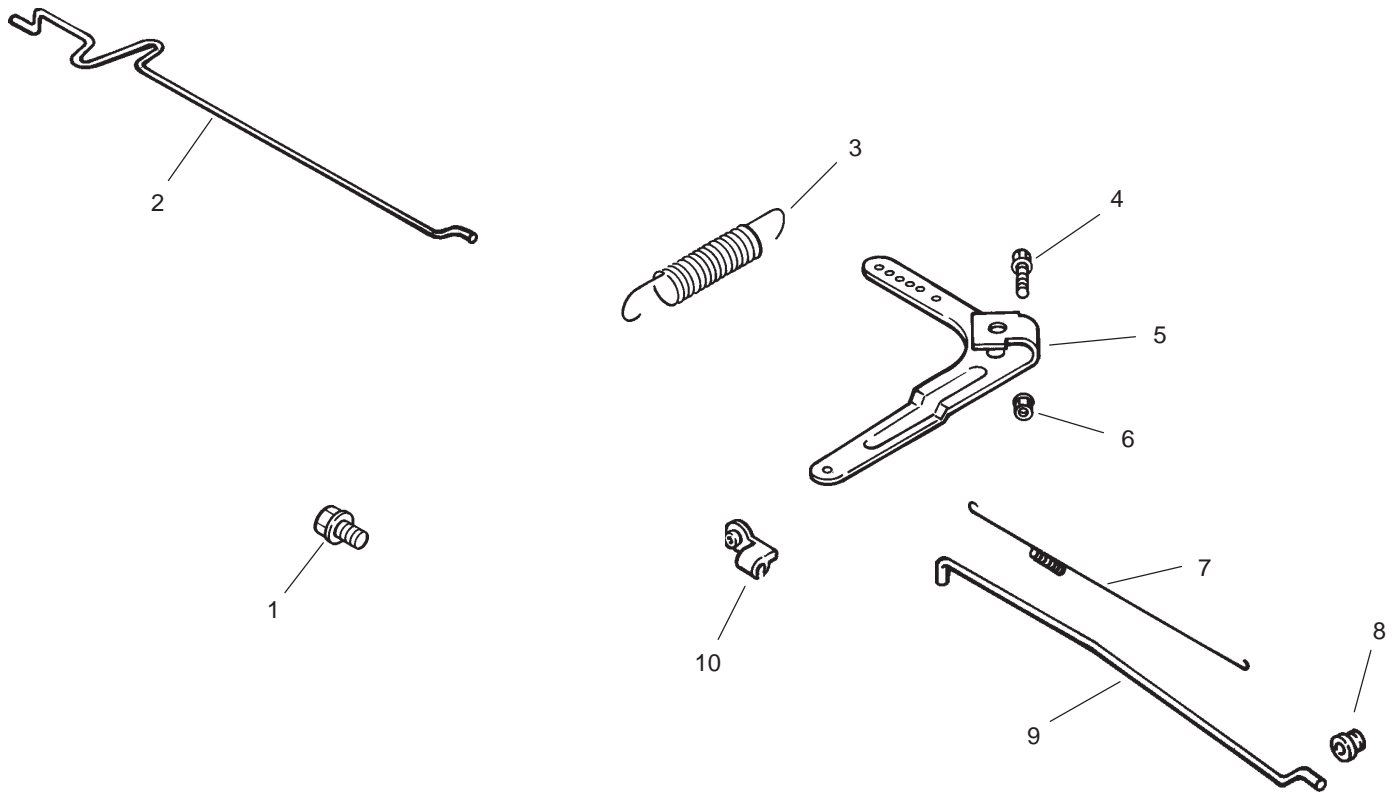


Fuel System Assembly Kohler CH20S-64647

Ref. No.	Part No.	Qty.	Description
1	25 353 32-S	1	Line, fuel 9-1/2
2	25 237 14-S	6	Clamp, hose
3	24 853 33-S	1	Kit, carburetor w/gasket (Includes 4-6)
4	24 041 06-S	1	Gasket, air cleaner base
5		1	Carburetor assembly (Includes 24 75701-S, 24 757 02-S, 24 757 03-S, 24 757 07-S, 24 757 08-S & 24 757 09-S) 2405333 (For information only not available separately)
6	24 041 17-S	1	Gasket, carburetor
7	M-651030-S	2	Screw, hex. flange M6x1.0x30
8	24 050 02-S	1	Filter, fuel
9	25 353 15-S	1	Line, fuel 3-1/2
10	24 353 02-S	1	Line, fuel 15-1/2
11	24 100 01-S	2	Nut, plastic

Ref. No.	Part No.	Qty.	Description
12	24 393 16-S	1	Pump, fuel
13	24 086 12-S	2	Screw, hex. cap M6x1.7x18
	24 755 125-S	1	Not Illustrated Kit, high altitude w/gaskets
	24 757 01-S	1	Kit, solenoid repair
	24 757 02-S	1	Kit, float repair
	24 757 03-S	1	Kit, carburetor repair
	24 757 07-S	1	Kit, choke repair
	24 757 08-S	1	Kit, repair - accelerator pump seal
	24 757 09-S	1	Kit, repair - accelerator pump diaphragm

Obtain Parts from Kohler



Engine Controls Kohler CH20S-64647

Ref. No.	Part No.	Qty.	Description
1	M-645016-S	4	Screw, hex. flange M6x1.0x16
2	24 079 21-S	1	Linkage, choke
3	24 089 15-S	1	Spring, governor
4	24 211 03-S	1	Bolt, rd. hd. sq. neck M6x1.0x25
5	24 090 33-S	1	Lever, governor
6	M-641060-S	1	Nut, hex. flange M6x1.0
7	24 089 01-S	1	Spring, linkage
8	25 158 08-S	1	Bushing, throttle linkage
9	24 079 01-S	1	Linkage, throttle
10	25 158 11-S	1	Bushing, linkage retaining
	25 454 03-S	1	Not Illustrated Tie, wire

Ref. No.	Part No.	Qty.	Description

Obtain Parts from Kohler

