



## REAR ATTACH-A-MATIC™ HITCH

PART NO. 95-4220

INSTALLATION  
INSTRUCTIONS

### Loose Parts

**Note:** Use the chart below to identify parts for assembly.

DESCRIPTION	QTY.	USE
Mounting bracket assembly	1	Assemble Attach-A-Matic™
Mounting bracket	2	
Lock nut .375-16	4	
Carriage bolt .375-16 x 3.5"	4	

### Assembling the Rear Attach-A-Matic™ Hitch

The rear Attach-A-Matic™ is mounted on the rear axle of the tractor.

1. Push one bolt upward through the rear hole on each side of the Attach-A-Matic™, then through a mounting bracket (Fig. 1).

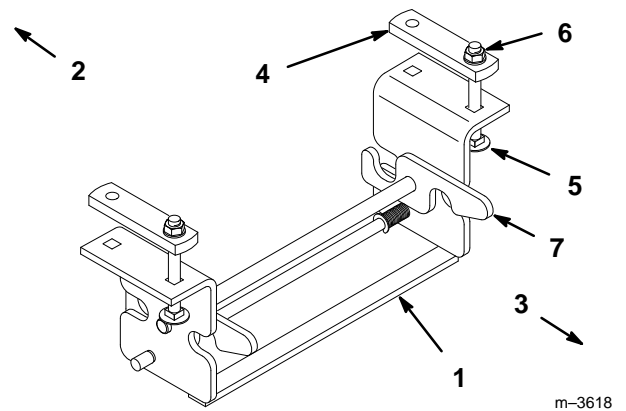
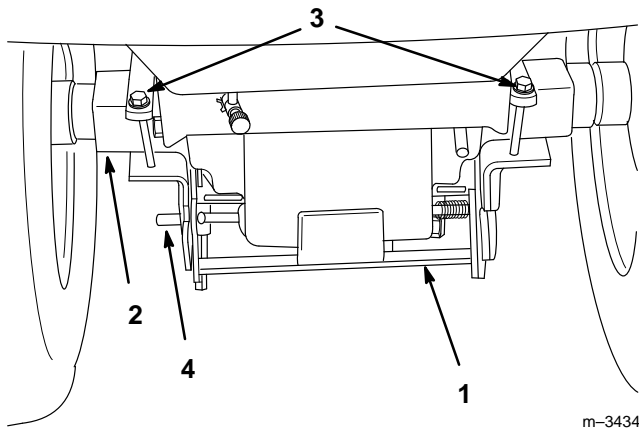


Figure 1

- |                            |                              |
|----------------------------|------------------------------|
| 1. Attach-A-Matic™         | 5. Carriage bolt .375 x 3.5" |
| 2. Facing front of tractor | 6. Lock nut                  |
| 3. Facing rear of tractor  | 7. Latch                     |
| 4. Mounting bracket        |                              |

2. Begin to thread a nut onto the end of the bolt (Fig. 1).

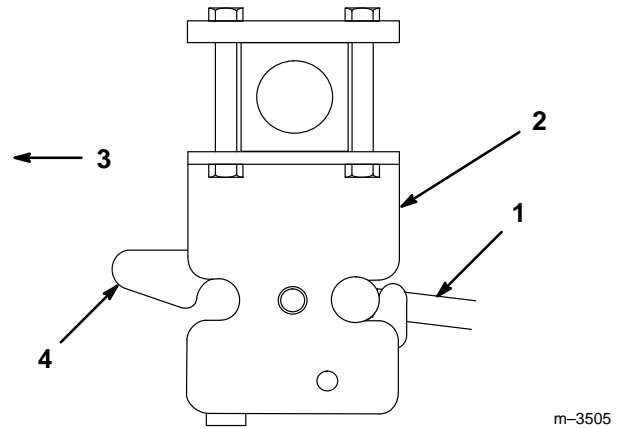
3. Place the Attach-A-Matic™ under the rear axle (Fig. 2), and rotate the mounting brackets over the top of the axle to hold the Attach-A-Matic™ in place.
4. Push the remaining two bolts upward through the front holes on the Attach-A-Matic™, then through the remaining holes on the mounting brackets. Thread a nut onto each bolt.



**Figure 2**

- |                    |                   |
|--------------------|-------------------|
| 1. Attach-A-Matic™ | 3. Mounting nuts  |
| 2. Axle housing    | 4. Release button |

5. Tighten the nuts evenly on the bolts to hold the Attach-A-Matic™ in place.
6. When mounting an attachment to the rear Attach-A-Matic™, press on the release button (Fig. 2) and open the latches. Place the attachment bar hitch into the Attach-A-Matic™, then close the latches (Fig. 3).



**Figure 3**

- |                         |          |
|-------------------------|----------|
| 1. Attachment bar hitch | 3. Rear  |
| 2. Rear Attach-A-Matic™ | 4. Latch |