



# Deluxe Seat Suspension Kit

## Groundsmaster® 3000/4000 Series

Model No. 30396

## Parts Catalog

### Ordering Replacement Parts

To order replacement parts, please supply: the part number, the quantity, and the description of each part desired.

### Understanding Reference Numbers

Each identified part in an illustration has a reference number. The reference number for a part also appears in the parts list, along with other information about the part.

This catalog uses two special reference number formats, one to indicate parts in a service assembly and another to indicate the quantity of a given part in an illustration.

### Service Assembly Reference Numbers

Parts in service assemblies have reference numbers in the form **a:b**. The **a** represents the reference number of the entire service assembly and the **b** represents a sequential number unique to each part within the service assembly.

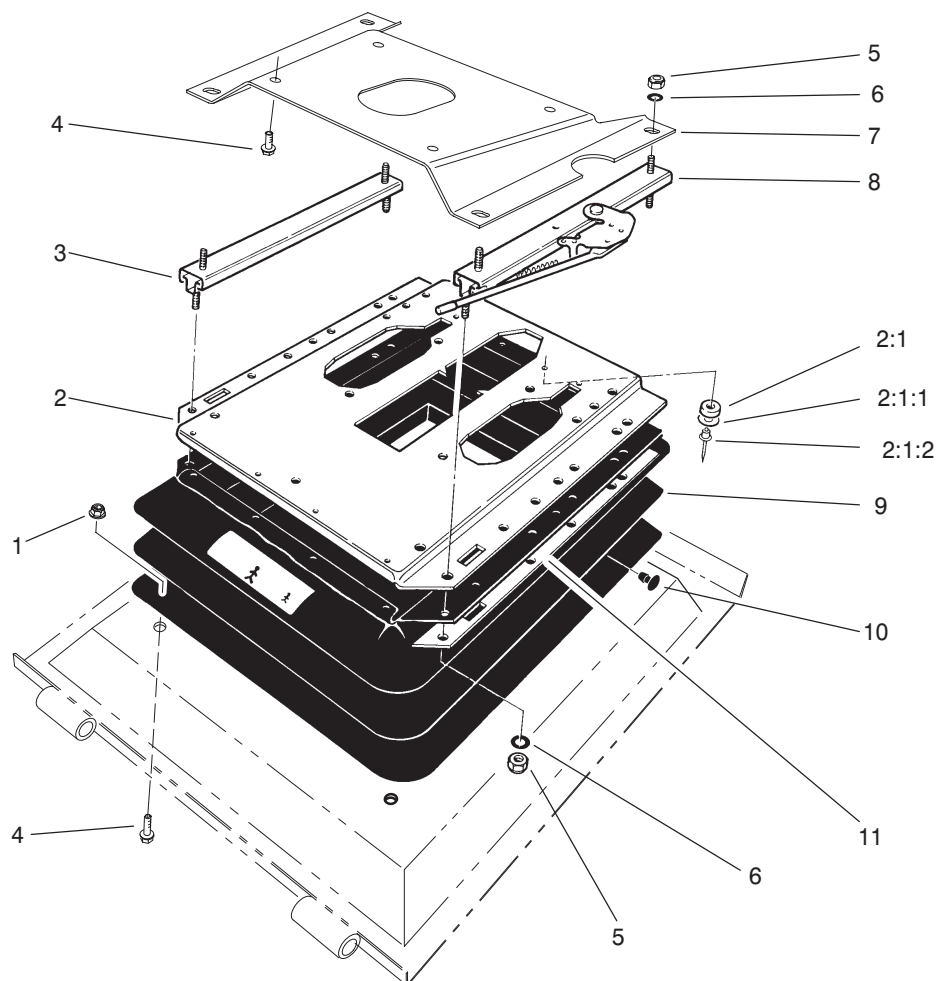
For example, a wheel assembly might be identified by reference number **6**, the tire by **6:1**, the valve by **6:2**, and the wheel by **6:3**. When you order the assembly identified by reference number **6**, you receive all parts identified by reference numbers **6:1**, **6:2**, and **6:3**. However, you may also order any part individually.

Reference numbers of this type appear in illustrations and in part lists.

### Reference Numbers Indicating Quantity

In an illustration, if a reference number indicates more than one part, the reference number has the form **nX y**. The **n** represents the quantity of the part, the **X** is the multiplication symbol, and the **y** represents the reference number.

For example, in an illustration, the reference number **2X 37** means that two of the parts identified by reference number **37** are indicated.

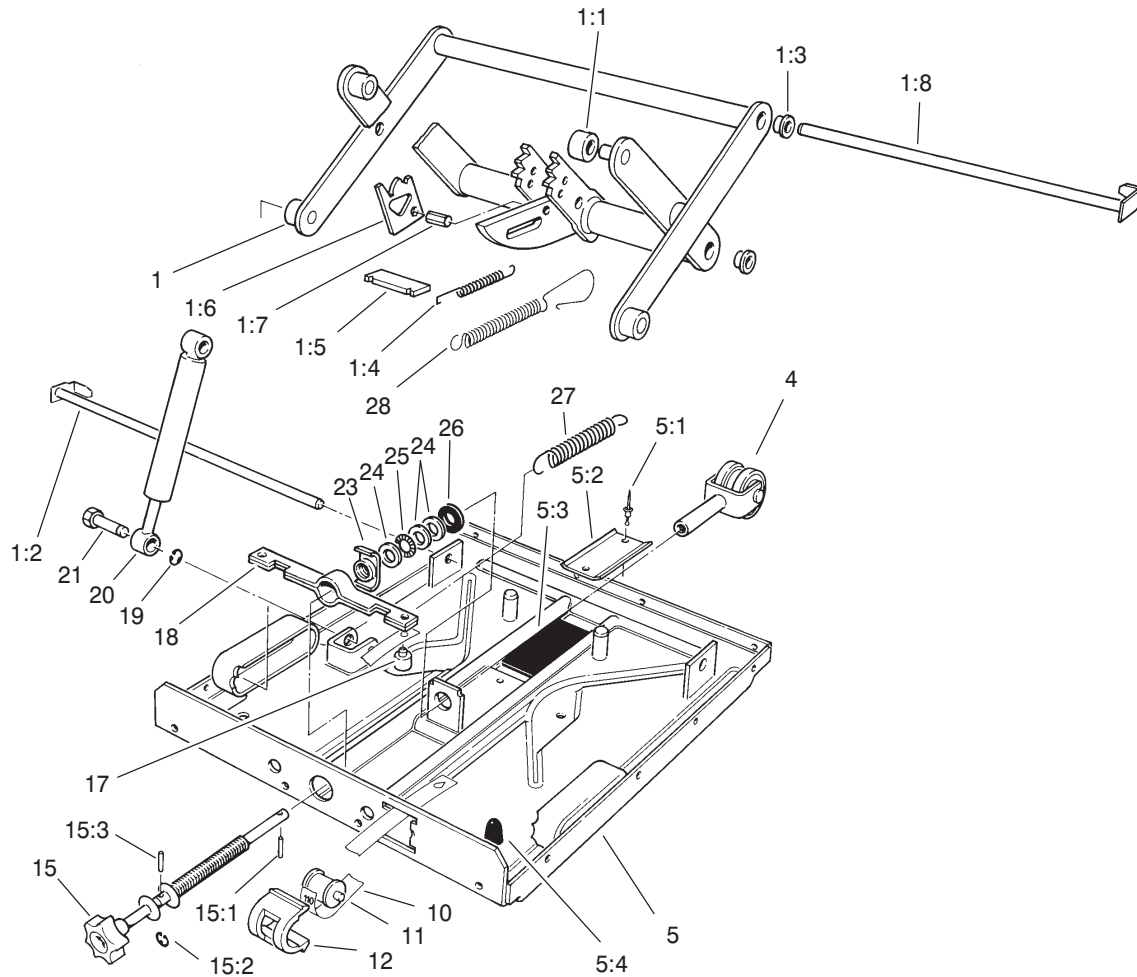


T-2264-2  
Sheet No.:0

## Suspension Kit Assembly

Ref. No.	Part No.	Qty.	Description
1	32128-44	4	Nut-Flange
2	71-2410	1	Plate-Upper Suspension
2:1	71-2400	2	Bumper Assembly
2:1:1	71-2380	2	Washer
2:1:2	71-2390	2	Rivet-Pop
3	66-8530	1	Adjuster
4	3234-17	8	Screw-HHF
5	3296-29	8	Nut-Lock
6	3256-23	8	Washer-Flat
7	93-5602	1	Bracket-Seat
8	66-8510	1	Adjuster and Handle Assembly
9	71-2420	1	Bellows-Rubber
10	39-5710	21	Plug
11	40-3890	2	Trim

Ref. No.	Part No.	Qty.	Description



T-0483  
Sheet No.:A1

## Seat Suspension Assembly

Ref. No.	Part No.	Qty.	Description	Ref. No.	Part No.	Qty.	Description
1	71-2200	1	Swing Arm ASM	18	71-2250	1	Bracket-Spring
1:1	40-4010	4	Roller	19	71-2330	2	Ring-Snap
1:2	71-2170	1	Pin	20	71-2340	1	Absorber-Shock
1:3	71-2180	4	Bearing	21	71-2320	2	Pin
1:4	40-4350	2	Spring-Coil	23	71-2270	1	Nut-Special
1:5	40-4360	1	Plate	24	40-4070	3	Washer
1:6	40-4380	2	Bracket-Release	25	40-4310	1	Bearing-Thrust, Needle
1:7	40-4370	1	Bolt	26	40-4060	1	Washer-Rubber
1:8	71-2190	1	Pin	27	71-2260	2	Spring
4	71-2290	1	Fork And Triple Bearing ASM	28	40-4340	1	Spring-Coil
5	71-2310	1	Plate-Suspension, Lower				
5:1	40-4090	2	Rivet				
5:2	40-4080	1	U-Track				
5:3	40-4120	1	Rubber				
5:4	71-2300	2	Bumper-Rubber				
10	71-2280	1	Band-Indicator, Weight				
11	40-4150	1	Roller				
12	40-4160	1	Guide-Sleeve				
15	71-2240	1	Knob ASM				
15:1	71-2210	1	Pin				
15:2	71-2230	1	Ring-Snap				
15:3	71-2220	1	Pin				
17	40-4230	1	Plug				

