



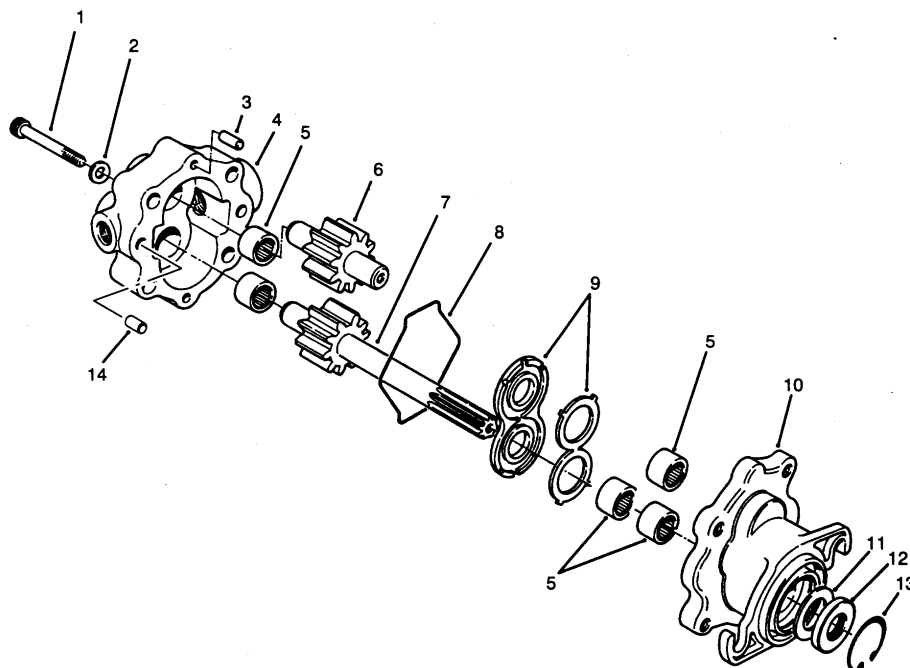
Customer Service Bulletin Commercial Business Group

Greensmaster® 3, 300, and 3000 Series

Model/Serial Range: **Model Number:** **Serial Numbers:**
ALL 00000-99999

Subject: **Availability of Reel Motor with O-Ring Case Seal.**

Improved Reel Motor (94-3506) includes an O-ring seal between the case halves for enhanced resistance to leakage. Previous motors use Shellac or Loctite® to seal the case, which is very dependent upon cleanliness and surface finish. The improved motor is available through your local Toro distributor as a direct replacement for past reel motors. However, a different fitting and hose position change is required at the center (#1) cutting unit location. Identify the style of fitting on your machine and install O-ring Face Seal Fitting (340-98) or 37° flare JIC Fitting (353-371) in the return port of the motor. Orient the fitting so the return hose makes a natural bend throughout the normal operating motion of the cutting unit.



T-1872

REEL MOTOR NO. 94-3506

Ref. No.	Part No.	Description	No. Used	Ref. No.	Part No.	Description	No. Used
1	354-50	Screw - Hex. Socket Hd.	4	9	74-3810	Load Plate Assembly	1
2	354-51	Washer	4	10	92-8795	Body Assembly (Incl. Ref. #5)	1
3	353-599	Pin - Dowel	2	†11		Spacer	1
4	94-3507	Cover Assembly (Incl. Ref. #5)	1	†12		Seal - Shaft	1
†5		Bearing - Needle	5	13	32151-41	Ring - Retaining	1
6	94-3509	Idler Gear Assembly	1	14	92-8796	Pin - Dowel	2
7	94-3508	Drive Shaft Assembly	1		92-8863	Repair Kit (Incl. Ref. #8 & 11-13)	1
8	354-46	Ring - Seal	1				