



Count on it.

Parts Catalog

Flex™ Tooth Rake

Sand Pro® 2040Z Traction Unit

Model No. 08716—Serial No. 314000001 and Up



Ordering Replacement Parts

To order replacement parts, please supply the part number, the quantity, and the description of each part desired.

Understanding Reference Numbers

Each identified part in an illustration has a reference number. The reference number for a part also appears in the parts list, along with other information about the part.

This catalog uses two special reference number formats, one to indicate parts in a service assembly and another to indicate the quantity of a given part in an illustration.

Service Assembly Reference Numbers

Parts in service assemblies have reference numbers in the form a:b. The a represents the reference number of the entire service assembly and the b represents a sequential number unique to each part within the service assembly.

For example, a wheel assembly might be identified by reference number 6, the tire by 6:1, the valve by 6:2, and the wheel by 6:3. When you order the assembly identified by reference number 6, you receive all parts identified by reference numbers 6:1, 6:2, and 6:3. However, you may also order any part individually. Reference numbers of this type appear in illustration and in parts lists.

Reference Numbers Indicating Quantity

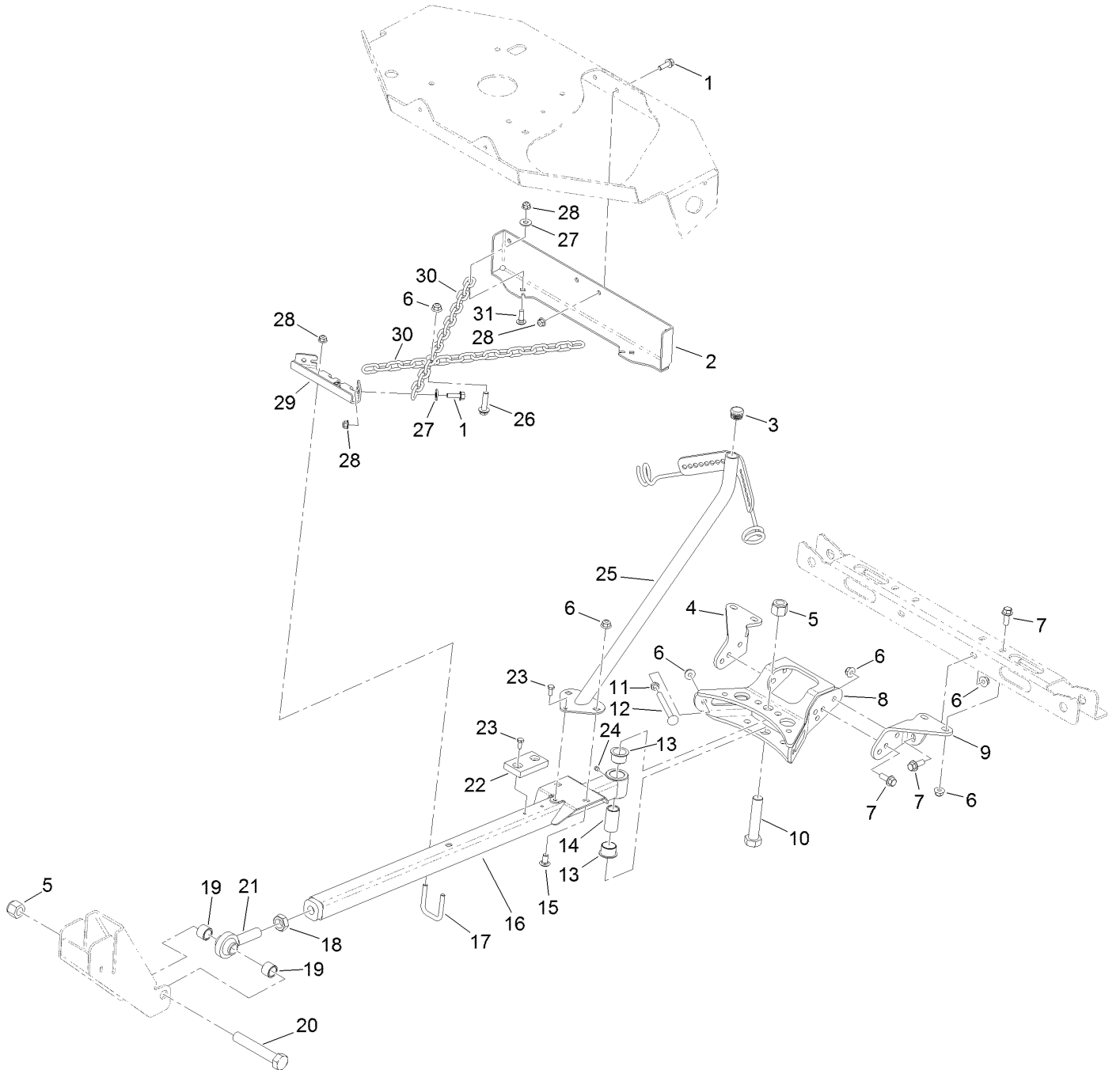
In an illustration, if a reference number indicates more than one part, the reference number has the form nX y. The n represents the quantity of the part, the X is the multiplication symbol, and the y represents the reference number.

For example, in an illustration, the reference number 2X 37 means that two of the parts identified by reference number 37 are indicated.

Contents

Drawbar Assembly..... 4
Rake Assembly..... 6
Attachments and Accessories 8

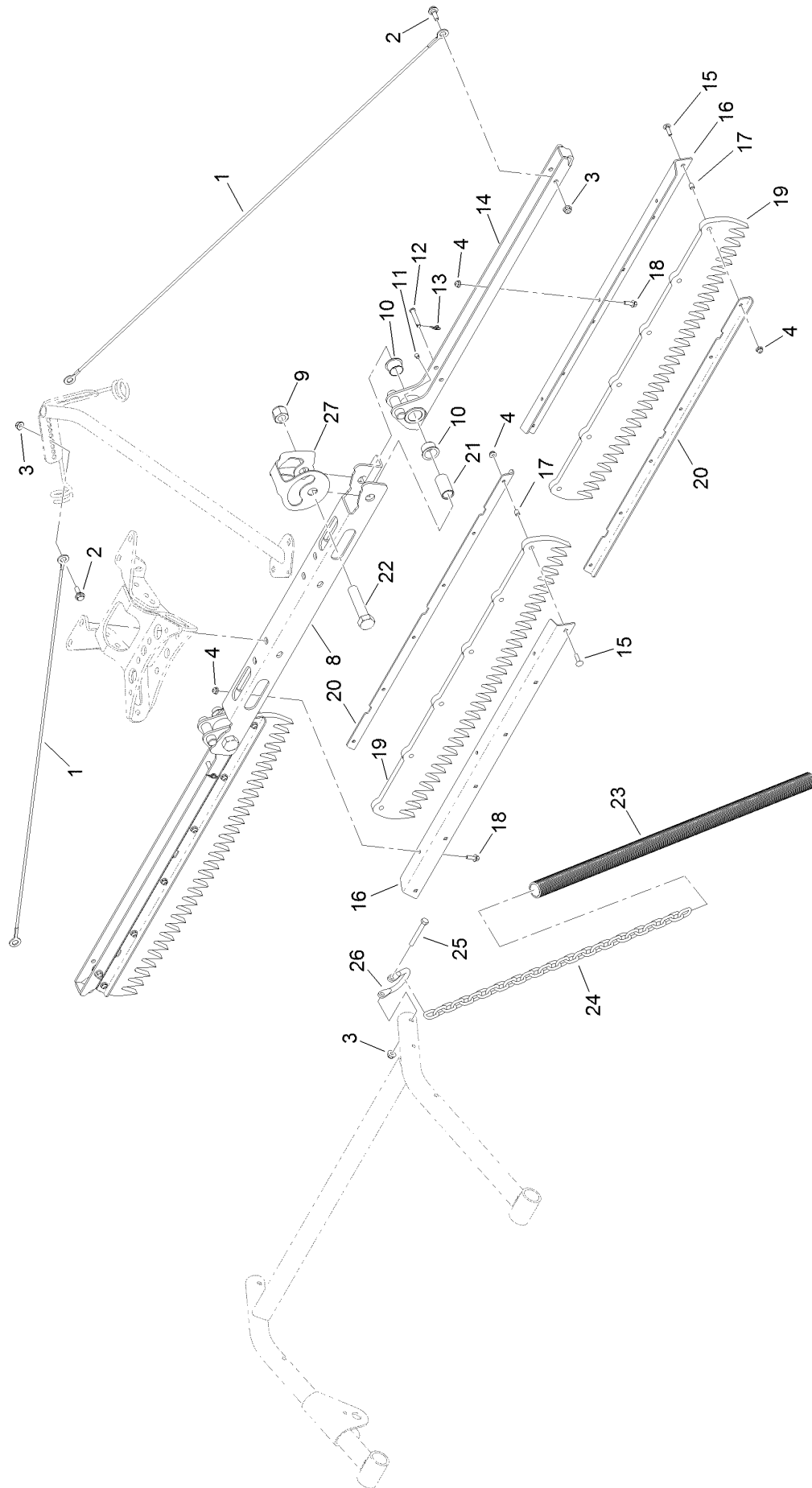
Drawbar Assembly



Drawbar Assembly (continued)

<i>Ref.</i>	<i>Part Number</i>	<i>Qty.</i>	<i>Description</i>	<i>Ref.</i>	<i>Part Number</i>	<i>Qty.</i>	<i>Description</i>
1	3234-29	6	Screw-HHF	16	125-5106-03	1	Drawbar
2	127-7883-01	1	Bracket-Stop, Hitch	17	301950	1	U-Bolt-Square
3	125-5128	1	Cap-End	18	3220-7	1	Nut-Jam
4	127-7864-03	1	Bracket-Center Groomer, RH	19	127-4138	2	Spacer
5	3296-51	2	Nut-Lock, NI	20	328-8	1	Screw-HH
6	104-8301	15	Nut-HF, NI	21	127-4139	1	Bearing-End, Rod
7	3234-42	10	Screw-HHF	22	93-9719	1	Block-Wear
8	127-7860-03	1	Pivot ASM	23	114-9291	3	Screw-HH,Thd Roll
9	127-7865-03	1	Bracket-Center Groomer, LH	24	302-59	1	Plug-EXT Hex Spl
10	328-5	1	Screw-HH	25	125-5112-03	1	Boom ASM
11	3218-3	2	Nut-Jam	26	3234-18	1	Screw-HHF
12	3231-34	2	Bolt-CARR, TAP	27	3256-3	4	Washer-Flat
13	127-0369	2	Bushing	28	104-8300	10	Nut-HF, NI
14	127-0360	1	Spacer	29	125-6476-03	1	Bracket-Stop, Tow
15	3231-21	2	Screw-CARR	30	125-5127	2	Chain-Proof, 18 Link
				31	3230-2	2	Bolt-CARR

Rake Assembly



Rake Assembly (continued)

<i>Ref.</i>	<i>Part Number</i>	<i>Qty.</i>	<i>Description</i>	<i>Ref.</i>	<i>Part Number</i>	<i>Qty.</i>	<i>Description</i>
1	125-5129	2	Cable	16	125-6488-03	3	Bracket-Groomer, Upper
2	116-1297	4	Screw-Shoulder	17	130-7842	18	Spacer
3	104-8300	6	Nut-HF, NI	18	3234-4	9	Screw-HHF
4	104-7201	27	Nut-HF, NI	19	125-6487	3	Trowel
8	121-8052-03	1	Beam-Hitch	20	125-6489-03	3	Bracket-Groomer, Lower
9	3296-51	2	Nut-Lock, NI	21	127-0360	2	Spacer
10	127-0369	4	Bushing	22	328-5	2	Screw-HH
11	302-59	2	Plug-EXT Hex Spl	23	127-7853	2	Sleeve-Chain
12	700280	2	Pin-Shear	24	125-5122	2	Chain-Proof, 30 Link
13	116-6639	2	Pin-Cotter, Locking	25	322-12	2	Screw-HH
14	121-8056-03	2	Mount-Groomer	26	125-2446	2	Shackle
15	3229-2	18	Screw-CARR	27	130-2618-03	2	Guard-Cable

Attachments and Accessories

For 08716 Flex Tooth Rake Sand Pro 2040Z Traction Unit

Product Name	Model/Part
Broom Finishing Kit.....	08719
Rubber Trowel Kit	130-2629

Notes:

Notes:

Notes:



Count on it.