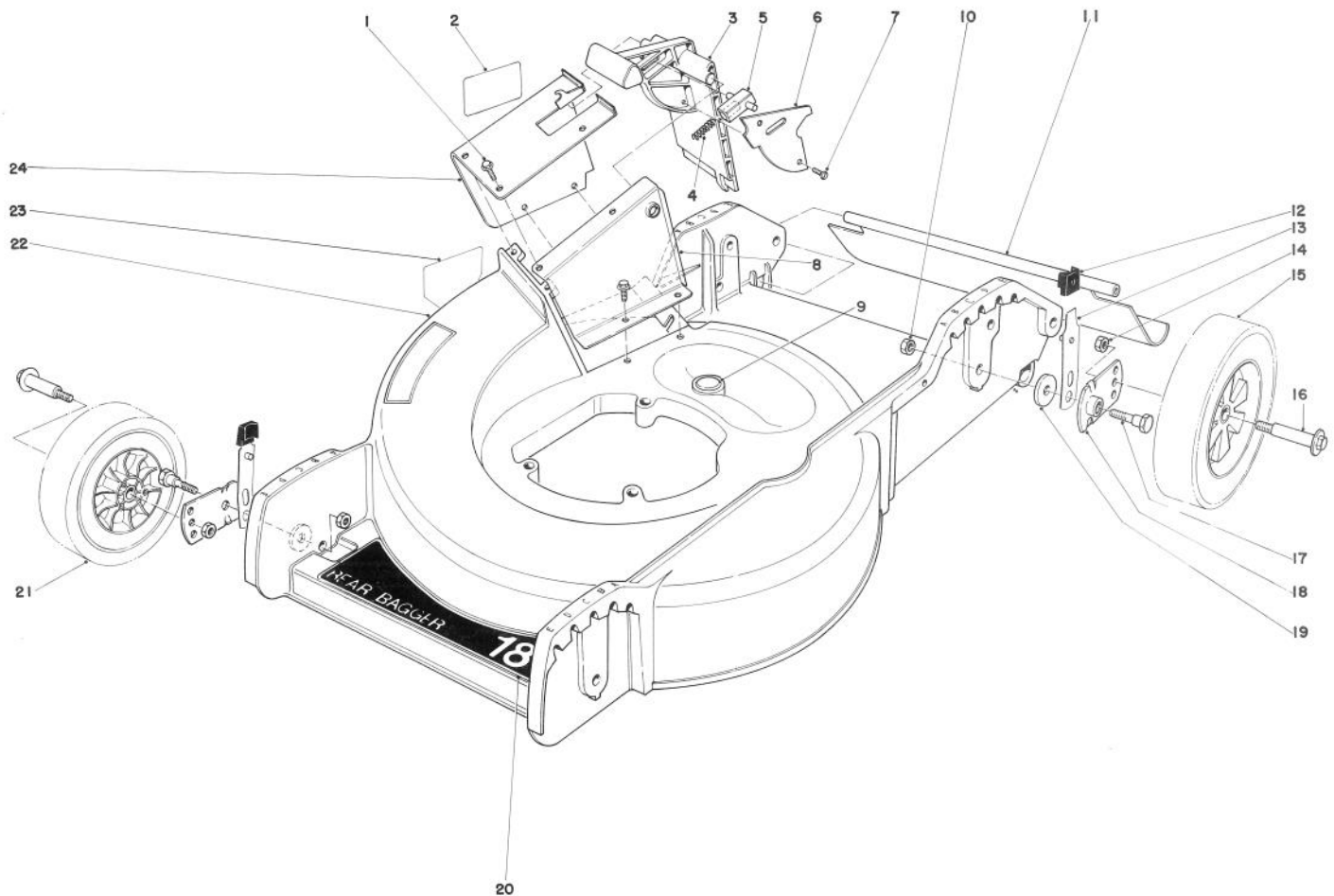


TORO®

MODEL NO. 20698 — 1000001 & UP

**PARTS
CATALOG****18" H.P. REAR BAGGER****HOUSING ASSEMBLY**

| Ref. No. | Part No. | Description | No. Used |
|----------|----------|---------------|----------|
| 1 | 12-3270 | Screw Special | 7 |
| 2 | 33-0460 | Decal Door | 1 |
| 3 | 33-0410 | Door Mulching | 1 |
| 4 | 33-0450 | Latch Spring | 1 |
| 5 | 33-0470 | Door Latch | 1 |
| 6 | 33-0440 | Door Cover | 1 |
| 7 | 32144-32 | Screw | 2 |
| 8 | 33-0430 | Inner Tunnel | 1 |
| 9 | 2410-54 | Plug | 1 |
| 10 | 32146-5 | Nut | 4 |
| 11 | 33-2380 | Rear Shield | 1 |
| 12 | 25-7740 | Arm Knob | 4 |
| 13 | 25-7890 | Spring Arm | 4 |

| Ref. No. | Part No. | Description | No. Used |
|----------|----------|-----------------------|----------|
| 14 | 32146-6 | Nut | 4 |
| 15 | 33-5600 | Wheel & Tire Assembly | 2 |
| 16 | 27-6230 | Wheel Bolt | 4 |
| 17 | 25-3440 | Pivot Screw | 4 |
| 18 | 33-0400 | Pivot Arm | 4 |
| 19 | 33-0390 | Pivot Washer | 4 |
| 20 | 40-2260 | Decal — Rear Bagger | 1 |
| 21 | 38-2650 | Wheel & Tire Assembly | 2 |
| 22 | 8-3529 | Housing | 1 |
| 23 | 39-5770 | Decal — Danger | 1 |
| 24 | 33-0420 | Tunnel — Outer | 1 |
| * | 11-0049 | Loose Parts | 1 |

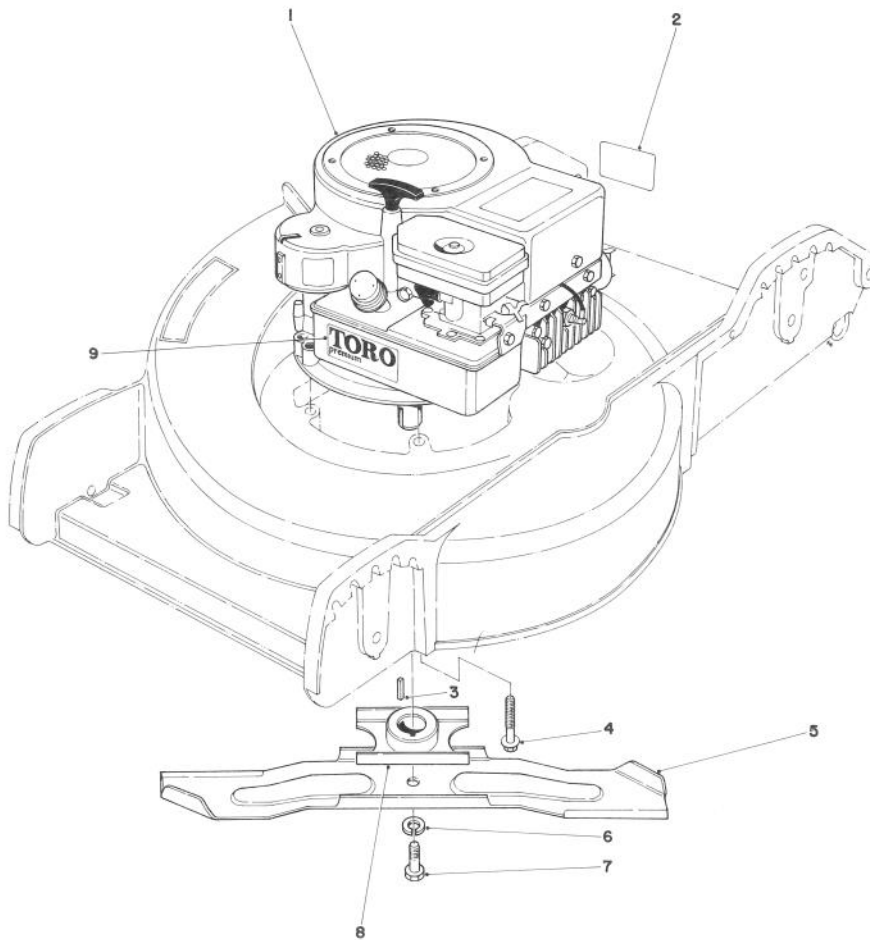
*Not Illustrated

COPYRIGHT © ALL RIGHTS RESERVED

The Toro Company — 1981

MINNEAPOLIS, MN 55420 — U.S.A.

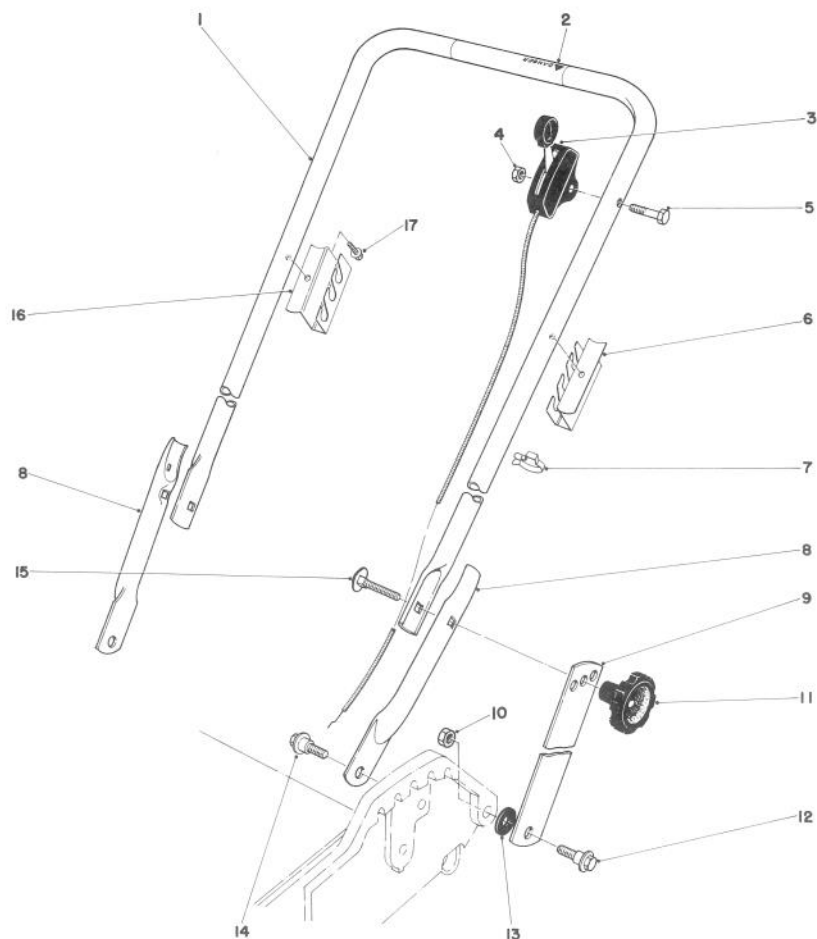
PRICE \$1.00



ENGINE ASSEMBLY

| Ref. No. | Part No. | Description | No. Used |
|----------|----------|---------------------|----------|
| 1 | 221-580 | Engine | 1 |
| 2 | 20-2710 | Decal — Maintenance | 1 |
| 3 | 27-8590 | Key Square | 1 |
| 4 | 11-0581 | Screw | 3 |
| 5 | 33-0490 | Blade | 1 |

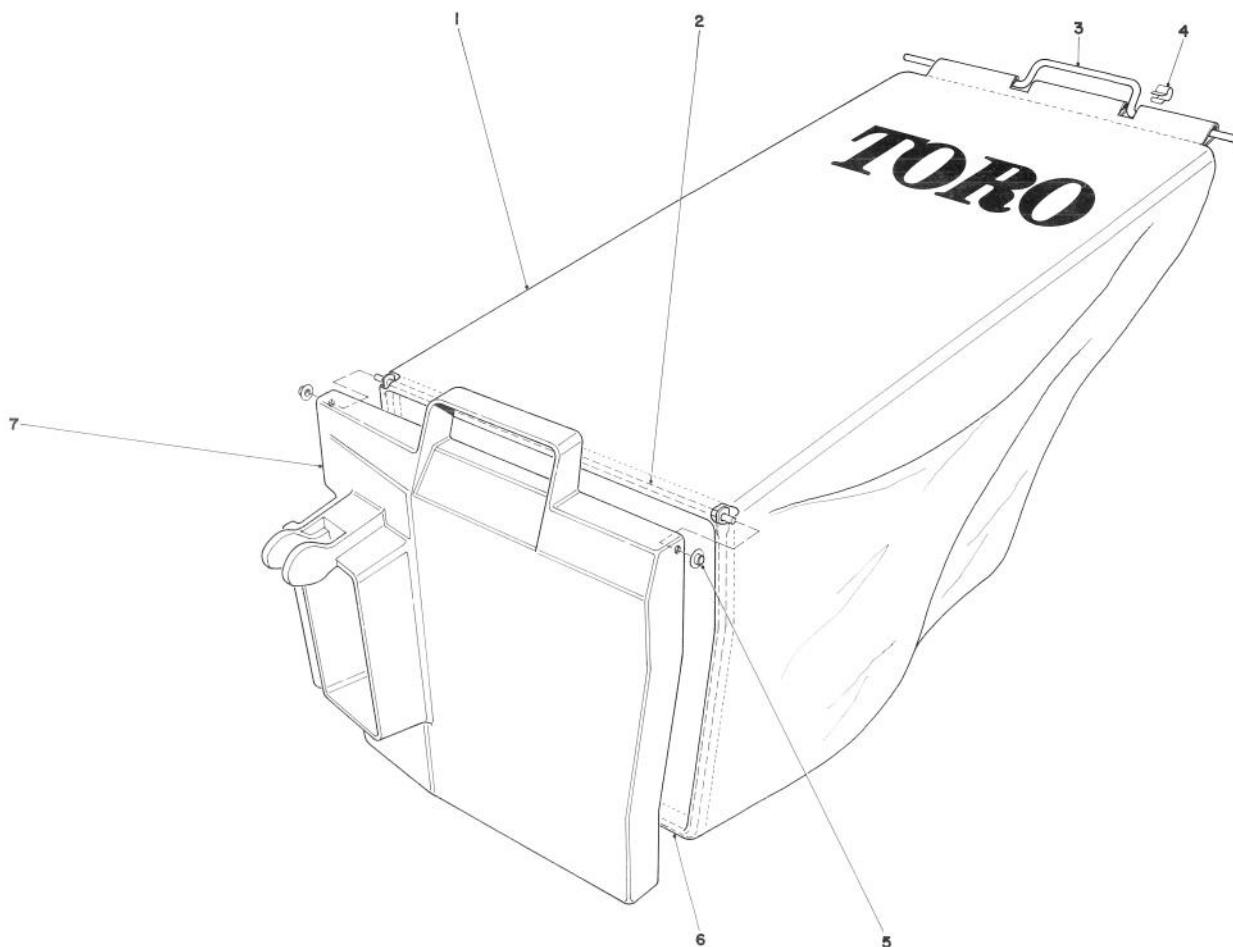
| Ref. No. | Part No. | Description | No. Used |
|----------|----------|----------------|----------|
| 6 | 3253-22 | Lockwasher | 1 |
| 7 | 3-5246 | Screw Special | 1 |
| 8 | 20-2750 | Blade Retainer | 1 |
| 9 | 40-2570 | Decal — Toro | 1 |



HANDLE ASSEMBLY

| Ref. No. | Part No. | Description | No. Used |
|----------|----------|------------------|----------|
| 1 | 33-0510 | Upper Handle | 1 |
| 2 | 29-6290 | Decal — Danger | 1 |
| 3 | 33-2531 | Throttle Control | 1 |
| 4 | 32146-17 | Locknut | 1 |
| 5 | 321-10 | Capscrew | 1 |
| 6 | 36-0730 | Support Bag L.H. | 1 |
| 7 | 218-465 | Clip | 1 |
| 8 | 33-0520 | Lower Handle | 2 |
| 9 | 33-0530 | Handle Latch | 2 |

| Ref. No. | Part No. | Description | No. Used |
|----------|----------|---------------------|----------|
| 10 | 32146-5 | Locknut | 2 |
| 11 | 19-4050 | Handle Knob | 2 |
| 12 | 27-7210 | Shoulder Screw | 2 |
| 13 | 3-3287 | Spacer Handle Latch | 2 |
| 14 | 5-2490 | Shoulder Screw | 2 |
| 15 | 17-9420 | Handle Screw | 2 |
| 16 | 36-0740 | Bag Support R.H. | 1 |
| 17 | 32104-76 | Screw | 2 |

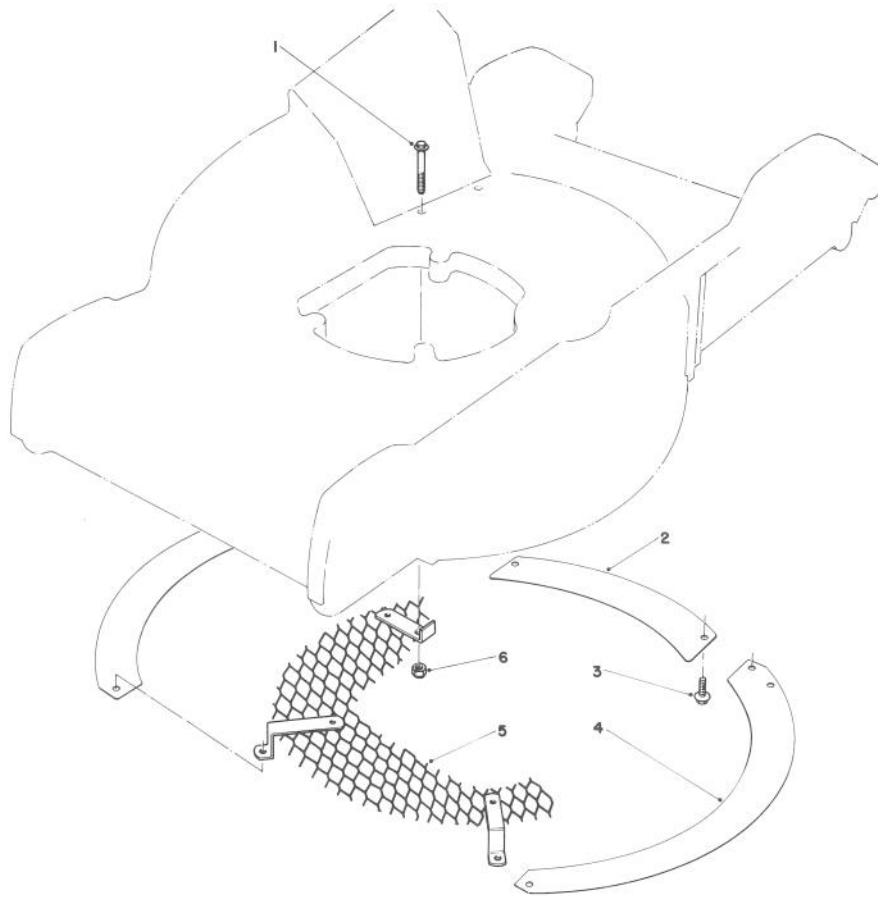


GRASS BAG ASSEMBLY

| Ref. No. | Part No. | Description | No. Used |
|----------|----------|-----------------|----------|
| 1 | 8-0659 | Bag | 1 |
| 2 | 33-2970 | Hinge | 1 |
| 3 | 33-2390 | Handle Bag | 1 |
| 4 | 3290-421 | Clip Bag Handle | 2 |

| Ref. No. | Part No. | Description | No. Used |
|----------|----------|---|----------|
| 5 | 3290-422 | Push Nut Washer Cap | 2 |
| 6 | 33-2240 | Frame Bag | 1 |
| 7 | 33-2980 | Door-Bag | 1 |
| * | 8-0669 | Grass Bag Assembly (Incl. Ref. #1-7) | 1 |

*Not Illustrated

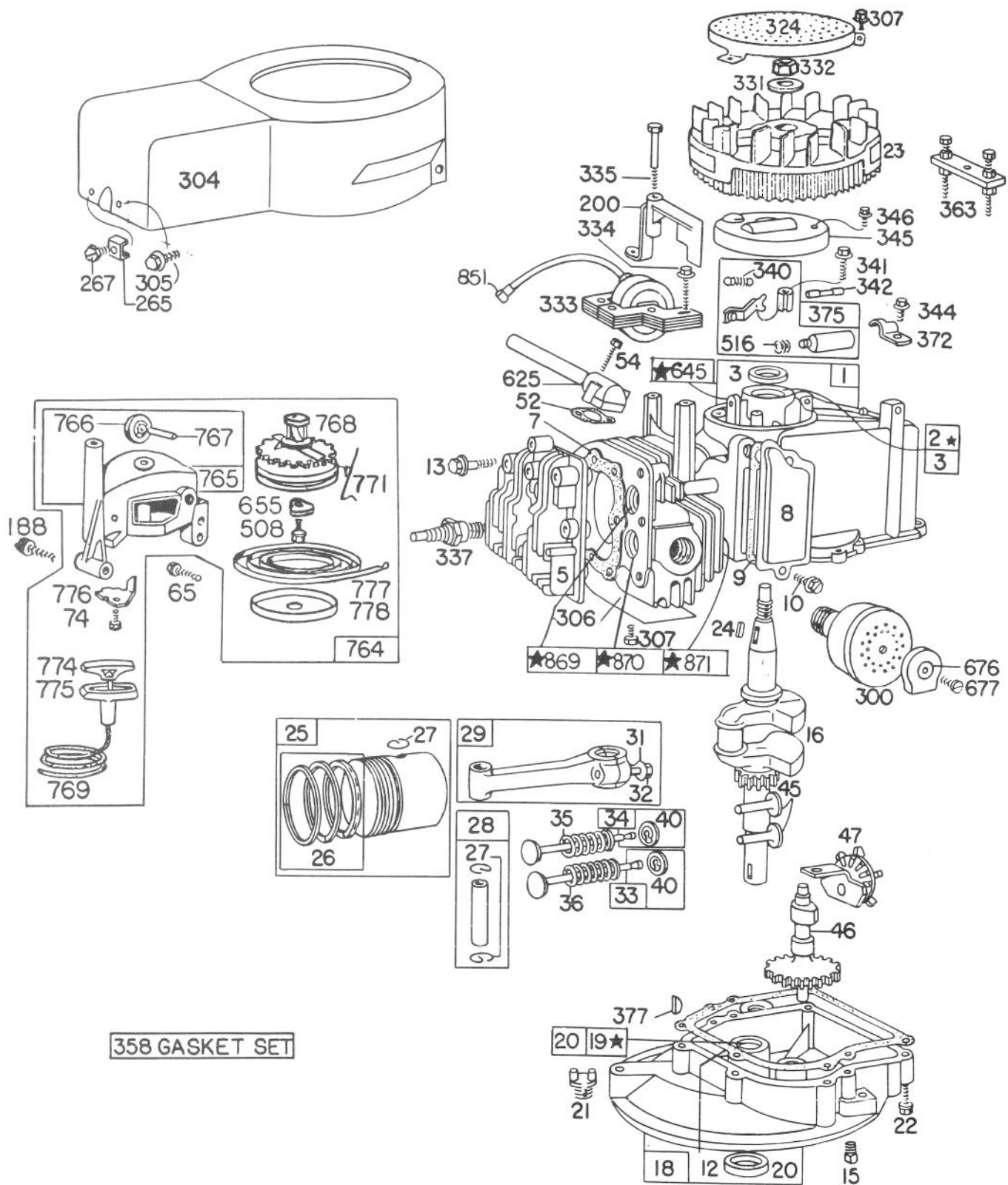


LEAF SHREDDER KIT NO. 59100 (optional)

| Ref. No. | Part No. | Description | No. Used |
|----------|----------|-------------|----------|
| 1 | 37-7470 | Screw | 1 |
| 2 | 37-7410 | Rear Baffle | 1 |
| 3 | 12-3270 | Screw | 4 |

| Ref. No. | Part No. | Description | No. Used |
|----------|----------|--------------|----------|
| 4 | 37-7400 | Outer Baffle | 2 |
| 5 | 37-7450 | Screen | 1 |
| 6 | 32146-17 | Locknut | 1 |

ENGINE BRIGGS & STRATTON MODEL NO. 92908-2054-01 ENGINE BRIGGS & STRATTON MODEL NO. 93508-0196-01



ENGINE BRIGGS & STRATTON MODEL NO. 92908-2054-01

ENGINE BRIGGS & STRATTON MODEL NO. 93508-0196-01

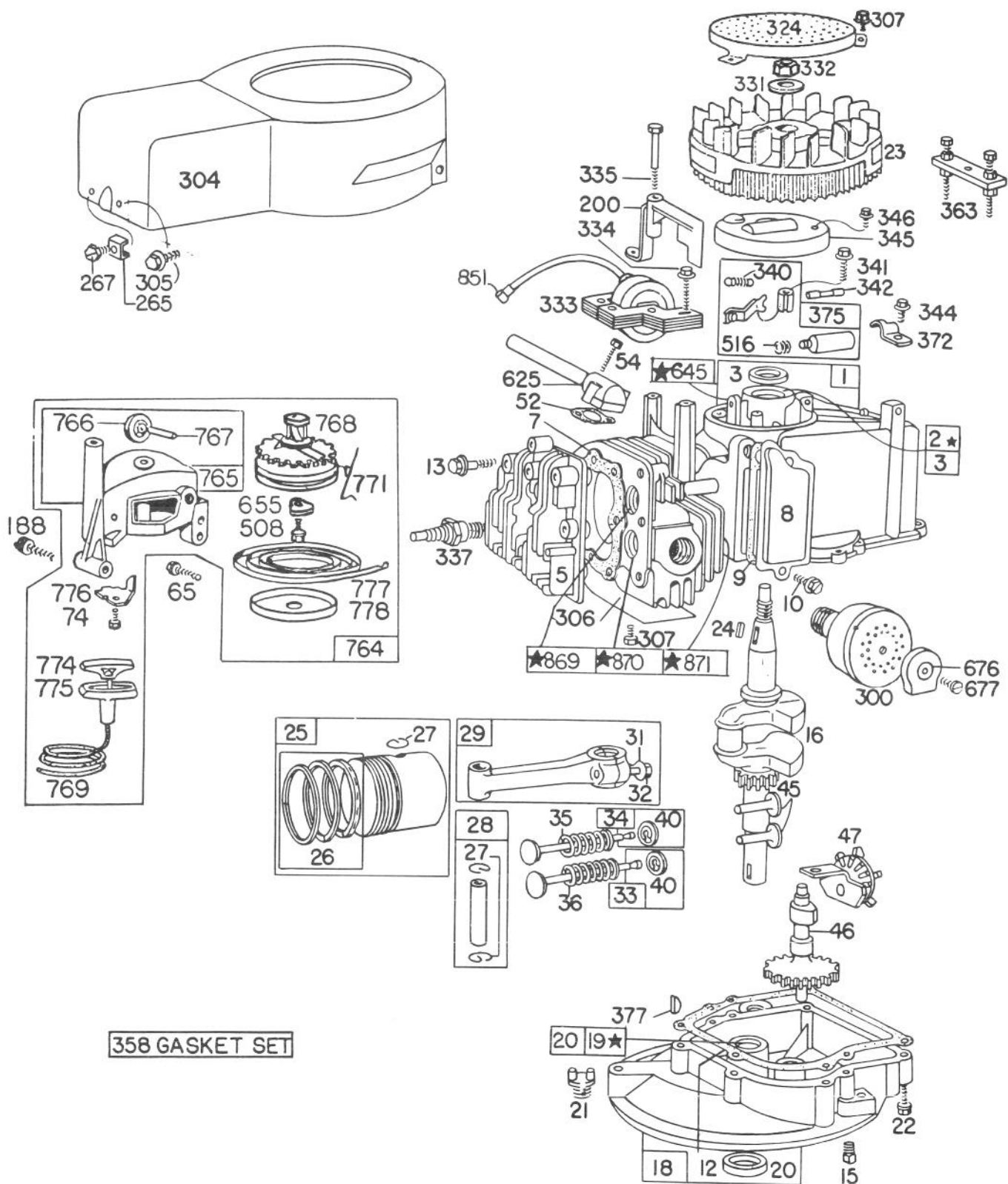
| Ref. No. | Part No. | Description | No. Used |
|----------|----------|---|----------|
| 1 | 298988 | Cylinder Assembly | 1 |
| 2 | 293708 | Bushing — Cylinder Note: Requires special tools for installation. | 1 |
| 3 | 89660 | Seal — Oil | 1 |
| 5 | 211479 | Head — Cylinder | 1 |
| 7 | *270341 | Gasket — Cylinder Head | 1 |
| 8 | 298383 | Breather — Valve Chamber | 1 |
| 9 | *270239 | Gasket — Valve Cover | 1 |
| 10 | 93394 | Screw — Breather and P.T.O. Gear Sump Cover (Ref. #86) Mtg. Sem | 1 |
| 12 | *270833 | Gasket — Crankcase — .015" thick (Standard) | 1 |
| | *270895 | Gasket — Crankcase — .005" thick | 1 |
| | *270896 | Gasket — Crankcase — .009" thick | 1 |
| 13 | 93111 | Screw — Cylinder Head (1-15/16" long) Note: 93772 Stud — Cylinder Head (2) 22963 Washer (2) Used on type Nos. 1438, 1597, 1602. | 1 |
| 15 | 91084 | Plug — Oil Drain (Square Head) | 1 |
| 16 | 261293 | Crankshaft | 1 |
| 18 | 390810 | Sump — Oil | 1 |
| 19 | 293709 | Bushing — Oil Sump Note: Requires Special Tools for Installation | 1 |
| 20 | 291841 | Seal — Oil | 1 |
| 21 | 66768 | Plug — Oil Filler | 1 |
| 22 | 93032 | Screw — Sump Mtg. Sem | 1 |
| 23 | 299982 | Flywheel — Magneto | 1 |
| 24 | 61760 | Key — Flywheel | 1 |
| 25 | 298904 | Piston Assy. — Standard | 1 |
| | 298905 | Piston Assy. — .010" O.S. | 1 |
| | 298906 | Piston Assy. — .020" O.S. | 1 |
| | 298907 | Piston Assy. — .030" O.S. | 1 |
| | | MODEL 92900 SERIES PISTON RING SETS: Note: For Chrome Piston Ring Set — standard size — order Part No. 299742. | 1 |
| 26 | 298982 | Ring Set — Standard Piston | 1 |
| | 298983 | Ring Set — .010" O.S. Piston | 1 |
| | 298984 | Ring Set — .020" O.S. Piston | 1 |
| | 298985 | Ring Set — .030" O.S. Piston | 1 |
| 27 | 26026 | Lock — Piston Pin | 1 |
| 28 | 298909 | Pin Assembly — Piston — Standard | 1 |
| | 298908 | Pin Assembly — Piston — .005" O.S. | 1 |

| Ref. No. | Part No. | Description | No. Used |
|----------|----------|--|----------|
| 29 | 294201 | Rod Assy. — Connecting Note: For Connecting Rod with .020" undersize Crank-pin Bore - order No. 296079 | 1 |
| 31 | 220756 | Lock — Conn. Rod Screw | 1 |
| 32 | 92296 | Screw — Connecting Rod | 1 |
| 33 | 296676 | Valve — Exhaust | 1 |
| 34 | 296677 | Valve — Intake | 1 |
| 35 | 260552 | Spring — Intake Valve | 1 |
| 36 | 26478 | Spring — Exhaust Valve | 1 |
| 40 | 93312 | Retainer — Valve Spring | 1 |
| 45 | 230173 | Tappet — Valve | 1 |
| 46 | 210453 | Gear — Cam | 1 |
| 47 | 294652 | Oil Slinger Gear and Bracket | 1 |
| 52 | *270345 | Gasket — Intake Elbow | 1 |
| 54 | 93485 | Screw — Intake Elbow Mtg. | 1 |
| 65 | 93587 | Screw — Vertical Pull Starter Mtg. | 1 |
| 74 | 93490 | Screw — Sem | 1 |
| 188 | 93585 | Screw — Fuel Tank and Starter Mtg. | 1 |
| 200 | 68388 | Blade — Governor | 1 |
| 265 | 22372 | Clamp — Casing | 1 |
| 267 | 93469 | Screw — Clamp Mtg. | 1 |
| 300 | 391435 | Muffler — Exhaust | 1 |
| 304 | 299983 | Housing — Blower | 1 |
| 305 | 93559 | Screw — Blower Housing Mtg. Sem | 1 |
| 306 | 221805 | Shield — Cylinder | 1 |
| 307 | 93490 | Screw — Cylinder Shield and Rotating Screen Mtg. Sem | 1 |
| 324 | 222063 | Screen — Rotating | 1 |
| 331 | 220865 | Washer — Flywheel | 1 |
| 332 | 92284 | Nut — Flywheel | 1 |
| 333 | 298502 | Armature — Magneto | 1 |
| 334 | 93381 | Screw — Armature Mtg. Sem | 1 |
| 335 | 93435 | Screw — Armature and Governor Blade Mtg. Sem | 1 |
| 337 | 298809 | Plug — Spark (with gasket) 1-1/2" high — (37-42 mm.) Note: Use Ignition Cable Terminal No. 221798. | 1 |
| 340 | 26018 | Spring — Breaker Arm | 1 |
| 341 | 93381 | Screw — Breaker Arm Mtg. Sem | 1 |
| 342 | 65704 | Plunger — Breaker Point | 1 |
| 344 | 93042 | Screw — Condenser Clamp Mtg. Sem | 1 |
| 345 | 220366 | Cover — Breaker Point and Condenser | 1 |
| 346 | 93014 | Screw — Dust Cover Mtg. | 1 |
| 358 | 298989 | Gasket Set | 1 |
| 363 | 19069 | Puller-Flywheel (Opt. Accessory) | 1 |

*Included in Gasket Set — Part No. 298989.

ENGINE BRIGGS & STRATTON MODEL NO. 92908-2054-01 (Continued)

ENGINE BRIGGS & STRATTON MODEL NO. 93508-0196-01 (Continued)

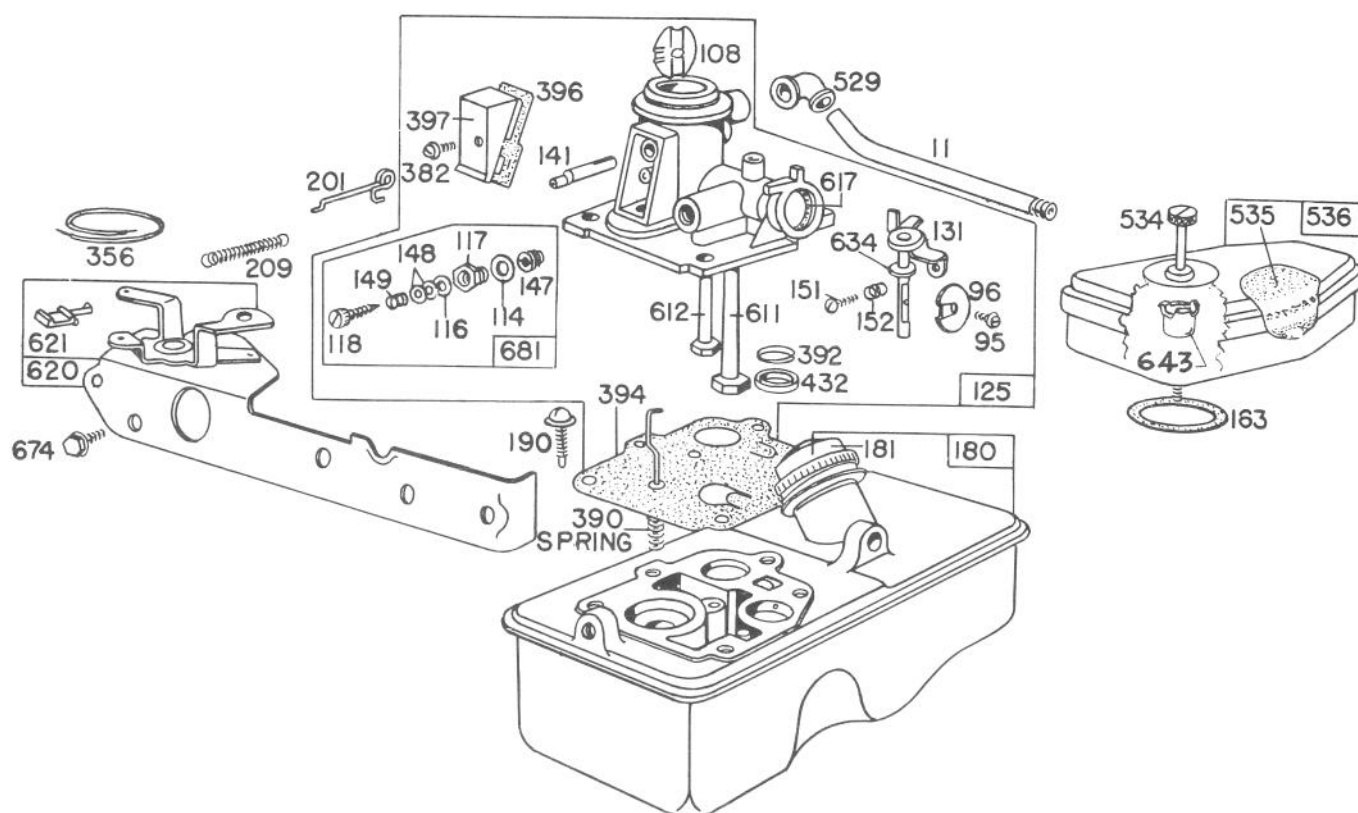


★NOTE-SPECIAL TOOLS REQUIRED FOR INSTALLING
SEE REPAIR INSTRUCTION MANUAL

ENGINE BRIGGS & STRATTON MODEL NO. 92908-2054-01 (Continued)
ENGINE BRIGGS & STRATTON MODEL NO. 93508-0196-01 (Continued)

| Ref. No. | Part No. | Description | No. Used |
|----------|----------|---|----------|
| 372 | 220477 | Clamp — Condenser | 1 |
| 375 | 294628 | Breaker Points and Condenser Set Note: 299061 Ignition Kit Includes: 294628 Point Set 65704 Plunger 61760 Key — Flywheel | 1 |
| 377 | 93065 | Key — Woodruff No. 6 | 1 |
| 508 | 93158 | Screw — Sem | 1 |
| 516 | 260374 | Spring Connector | 1 |
| 625 | 298775 | Tube — Fuel Intake | 1 |
| 645 | 23513 | Bushing — Plunger | 1 |
| 655 | 222057 | Anchor — Spring | 1 |
| 676 | 222522 | Deflector — Muffler | 1 |
| 677 | 93705 | Screw — Muffler Deflector | 1 |
| 764 | 299946 | Starter Assembly — Vertical Pull | 1 |
| 765 | 299947 | Housing — Vertical Pull Starter | 1 |
| 766 | 280022 | Pulley — Rope (Small) | 1 |
| 767 | 231048 | Pin — Small Rope Pulley (7/16" Long) | 1 |

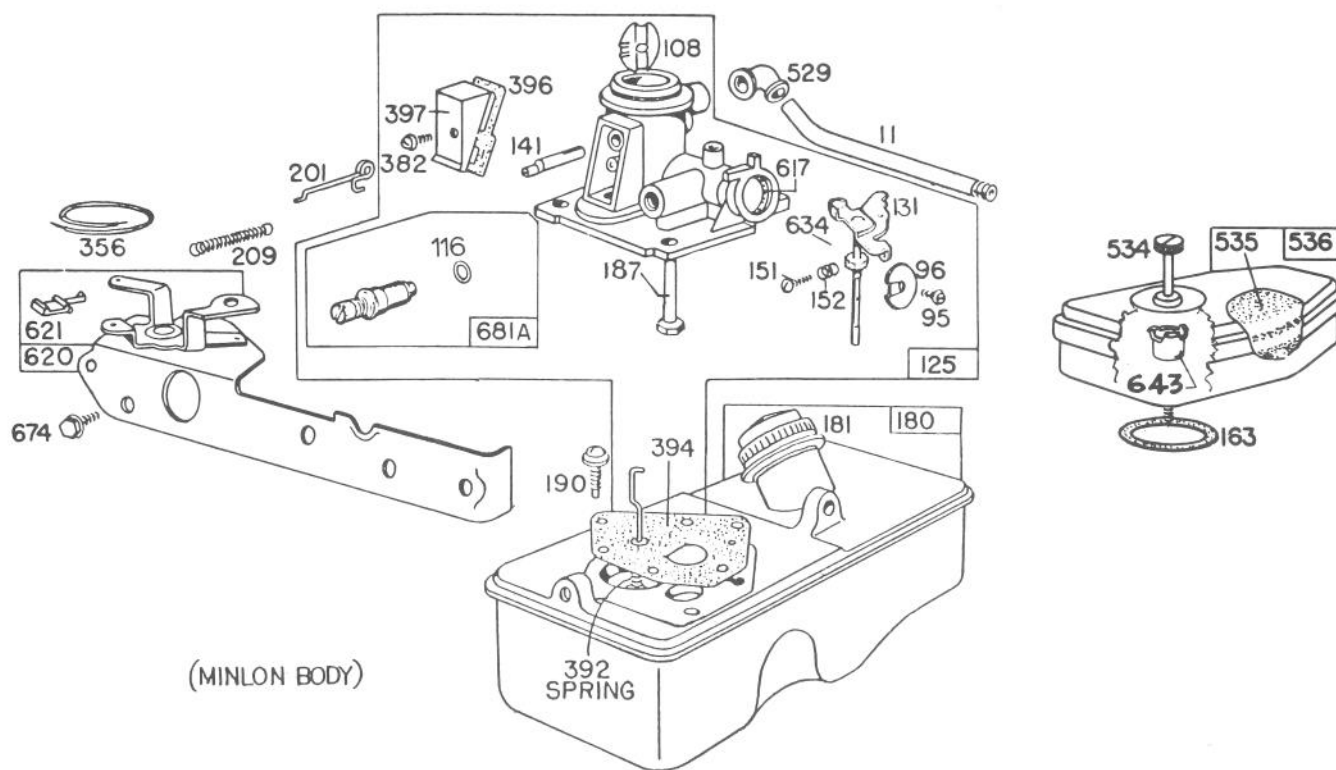
| Ref. No. | Part No. | Description | No. Used |
|----------|----------|---|----------|
| 768 | 299948 | Pulley and Gear Assembly — Starter | 1 |
| 769 | 66734 | Rope — Vertical Pull Starter | 1 |
| 771 | 299961 | Clip — Vertical Pull Starter | 1 |
| 774 | 280121 | Insert — Starter Handle | 1 |
| 775 | 280036 | Grip — Starter Rope | 1 |
| 776 | 222049 | Guide — Rope | 1 |
| 777 | 390066 | Spring — Vertical Pull Starter | 1 |
| 778 | 280021 | Cover — Vertical Pull Starter Pulley | 1 |
| 851 | 221798 | Terminal — Ignition Cable | 1 |
| 869 | 210879 | Seat — Intake Valve (Standard) Note: For installation and options see Repair Manual. | 1 |
| 870 | 211291 | Seat — Exhaust Valve (Standard) Note: For installation and options see Repair Manual. | 1 |
| 871 | 63709 | Guide — Exhaust Valve | 1 |



CARBURETOR ASSEMBLY BRIGGS & STRATTON MODEL NO. 92908-2054-01

| Ref. No. | Part No. | Description | No. Used |
|----------|----------|-------------------------------------|----------|
| 11 | 230802 | Tube — Breather | 1 |
| 95 | 93499 | Screw — Throttle Valve Mounting Sem | 1 |
| 96 | 211237 | Valve — Throttle | 1 |
| 108 | 298819 | Valve — Choke | 1 |
| 114 | 66594 | Gasket — Needle Valve Nut | 1 |
| 116 | 65978 | Packing — Needle Valve | 1 |
| 117 | 230590 | Nut — Needle Valve | 1 |
| 118 | 23433 | Valve — Needle | 1 |
| 125 | 390065 | Carburetor Assembly | 1 |
| 131 | 299977 | Shaft and Lever — Throttle | 1 |
| 141 | 68908 | Shaft — Choke | 1 |
| 147 | 230591 | Seat — Needle Valve | 1 |
| 148 | 22235 | Washer — Needle Valve | 2 |
| 149 | 26336 | Spring — Needle Valve | 1 |
| 151 | 93524 | Screw — Rd. Hd. — 5-40 x 1/2 | 1 |
| 152 | 260746 | Spring — Throttle Adj. | 1 |
| 163 | 270816 | Gasket — Air Cleaner Mtg. | 1 |
| 180 | 391694 | Tank Assembly — Fuel | 1 |
| 181 | 298425 | Cap — Fuel Tank | 1 |
| 190 | 93440 | Screw — Fuel Tank Mtg. | 1 |
| 201 | 261027 | Link — Governor | 1 |
| 209 | 261105 | Spring — Governor | 1 |

| Ref. No. | Part No. | Description | No. Used |
|----------|----------|--------------------------------|----------|
| 356 | 298479 | Wire — Ground | 1 |
| 382 | 93545 | Screw — Choke Link Cover | 1 |
| 390 | 261015 | Spring — Diaphragm | 1 |
| 392 | 260455 | Spring — Fuel Pump Diaphragm | 1 |
| 394 | 391681 | Diaphragm — Carburetor | 1 |
| 396 | 270571 | Gasket — Choke Link Cover | 1 |
| 397 | 211678 | Cover — Choke Link | 1 |
| 432 | 221377 | Cap — Spring | 1 |
| 529 | 67838 | Grommet Breather | 1 |
| 534 | 93374 | Screw — Air Cleaner | 1 |
| 535 | 270579 | Element — Air Cleaner | 1 |
| 536 | 390055 | Cleaner Assembly — Air | 1 |
| 611 | 297219 | Pipe — Fuel (long) | 1 |
| 612 | 296811 | Pipe — Fuel (short) | 1 |
| 617 | 270344 | Seal — Fuel Intake Tube | 1 |
| 620 | 299974 | Plate — Carburetor Control | 1 |
| 621 | 297472 | Switch — Stop | 1 |
| 634 | 270167 | Washer — Throttle Shaft (Felt) | 1 |
| 643 | 221321 | Cup — Air Cleaner | 1 |
| 674 | 93447 | Screw — Tank to Bracket | 1 |
| 681 | 299060 | Needle Valve Kit | 1 |



CARBURETOR ASSEMBLY BRIGGS & STRATTON MODEL NO. 93508-0196-01

| Ref. No. | Part No. | Description | No. Used |
|----------|----------|--|----------|
| 11 | 230802 | Tube — Breather | 1 |
| 95 | 93499 | Screw — Throttle Valve Mounting | 1 |
| 96 | 211203 | Valve — Throttle | 1 |
| 108 | 280178 | Valve — Choke | 1 |
| 116 | 280203 | Seal — O-Ring | 1 |
| 125 | 394591 | Carburetor Assembly | 1 |
| 131 | 394588 | Shaft and Lever Throttle | 1 |
| 141 | 68908 | Shaft — Choke | 1 |
| 151 | 93524 | Screw — Machine Rd. Hd. | 1 |
| 152 | 260746 | Spring — Throttle Adj. | 1 |
| 163 | 270816 | Gasket — Air Cleaner Mtg. | 1 |
| 180 | 393113 | Tank Assembly — Fuel | 1 |
| 181 | 298425 | Cap — Fuel Tank | 1 |
| 187 | 393001 | Pipe — Fuel | 1 |
| 190 | 93440 | Screw — Fuel Tank Mounting Sem | 1 |
| 201 | 260878 | Link — Governor | 1 |
| 209 | 260875 | Spring — Governor For 3400 to 3600 RPM Top Speed Set-No Load | 1 |

| Ref. No. | Part No. | Description | No. Used |
|----------|----------|--------------------------------|----------|
| 356 | 298479 | Wire — Ground | 1 |
| 382 | 93864 | Screw — Choke Link Cover | 1 |
| 392 | 261016 | Spring — Diaphragm | 1 |
| 394 | 299637 | Diaphragm — Carburetor | 1 |
| 396 | 270571 | Gasket — Choke Link Cover | 1 |
| 397 | 211678 | Cover — Choke Link | 1 |
| 529 | 67838 | Grommet — Breather | 1 |
| 534 | 93374 | Screw — Air Cleaner | 1 |
| 535 | 270579 | Element — Air Cleaner | 1 |
| 536 | 390055 | Cleaner Assembly — Air | 1 |
| 617 | 270344 | Seal — Intake Tube | 1 |
| 620 | 299974 | Plate — Carburetor Control | 1 |
| 621 | 297472 | Switch — Stop | 1 |
| 634 | 270167 | Washer — Throttle Shaft (Felt) | 1 |
| 643 | 221321 | Cup — Air Cleaner | 1 |
| 674 | 93158 | Screw — Tank to Bracket | 1 |
| 681A | 393451 | Needle Valve Kit | 1 |

IDENTIFICATION AND ORDERING

MODEL AND SERIAL NUMBERS

The Mower has two identification numbers: a model number and a serial number. The two numbers are stamped on a decal which is located on the mower housing between the rear wheels. In any correspondence concerning the mower, supply model and serial numbers to assure that correct information and replacement parts are obtained.

To order replacement parts from an Authorized TORO Service Dealer, supply the following information:

1. Model and serial numbers of the mower.
2. Part number, description, and quantity of part(s) desired.

Note: Do not order by reference number if a parts catalog is being used; use the PART NUMBER.

The Toro Promise

A ONE YEAR LIMITED WARRANTY

The Toro Company promises to repair your TORO Product if defective in materials or workmanship. The following time periods from the date of purchase apply:

| | |
|--|---------|
| Residential Product | 1 Year |
| Residential Products Used Commercially . . . | 45 Days |

The costs of parts and labor are included, but the customer pays the transportation costs. Just return any residential product to an Authorized TORO Service Dealer or TORO Distributor.

Should you feel your TORO Product is defective and wish to rely on The Toro Promise, the following procedure is recommended:

1. Contact any Authorized TORO Service Dealer, TORO Master Service Dealer, or TORO Distributor (the Yellow Pages of your telephone directory is a good reference source).
2. He will either instruct you to return the product to him or recommend another Authorized TORO Service outlet which might be more convenient.
3. Bring the product along with your original sales slip, or other evidence of purchase date, to the service dealer.
4. The servicing dealer will inspect the unit, advise you whether the product is defective and, if so, make all repairs necessary to correct the defect without extra charge to you.

If for any reason you are dissatisfied with the dealer's analysis of the defect or the service performed, you may contact us.

Write:

TORO Consumer Service Department
8111 Lyndale Avenue South
Minneapolis, Minnesota 55420

The above remedy of product defects through repair by an Authorized TORO Service Dealer is the purchaser's sole remedy for any defect.

THERE IS NO OTHER EXPRESS WARRANTY. ALL IMPLIED WARRANTIES OF MERCHANTABILITY AND

FITNESS FOR USE ARE LIMITED TO THE DURATION OF THE EXPRESS WARRANTY.

Some states do not allow limitations on how long an implied warranty lasts, so the above limitation may not apply to you.

This warranty applies only to parts or components which are defective and does not cover repairs necessary due to normal wear, misuse, accidents, or lack of proper maintenance. Regular, routine maintenance of the unit to keep it in proper operating condition is the responsibility of the owner.

All warranty repairs reimbursable under The Toro Promise must be performed by an Authorized TORO Service Dealer using Toro approved replacement parts.

Repairs or attempted repairs by anyone other than an Authorized TORO Service Account are not reimbursable under The Toro Promise. In addition, these unauthorized repair attempts may result in additional malfunctions, the correction of which is not covered by warranty.

THE TORO COMPANY IS NOT LIABLE FOR INDIRECT, INCIDENTAL OR CONSEQUENTIAL DAMAGES IN CONNECTION WITH THE USE OF THE PRODUCT INCLUDING ANY COST OR EXPENSE OF PROVIDING SUBSTITUTE EQUIPMENT OR SERVICE DURING PERIODS OF MALFUNCTION OR NON-USE.

Some states do not allow the exclusion or limitation of incidental or consequential damages, so the above limitation or exclusion may not apply to you.

This warranty gives you specific legal rights, and you may also have other rights which vary from state to state.

COUNTRIES OTHER THAN THE UNITED STATES OR CANADA

Customers who have purchased TORO products exported from the United States or Canada should contact their TORO Distributor (Dealer) to obtain guarantee policies for your country, province or state. If for any reason

you are dissatisfied with your Distributor's service or have difficulty obtaining guarantee information, contact the TORO importer. If all other remedies fail, you may contact us at The Toro Company.