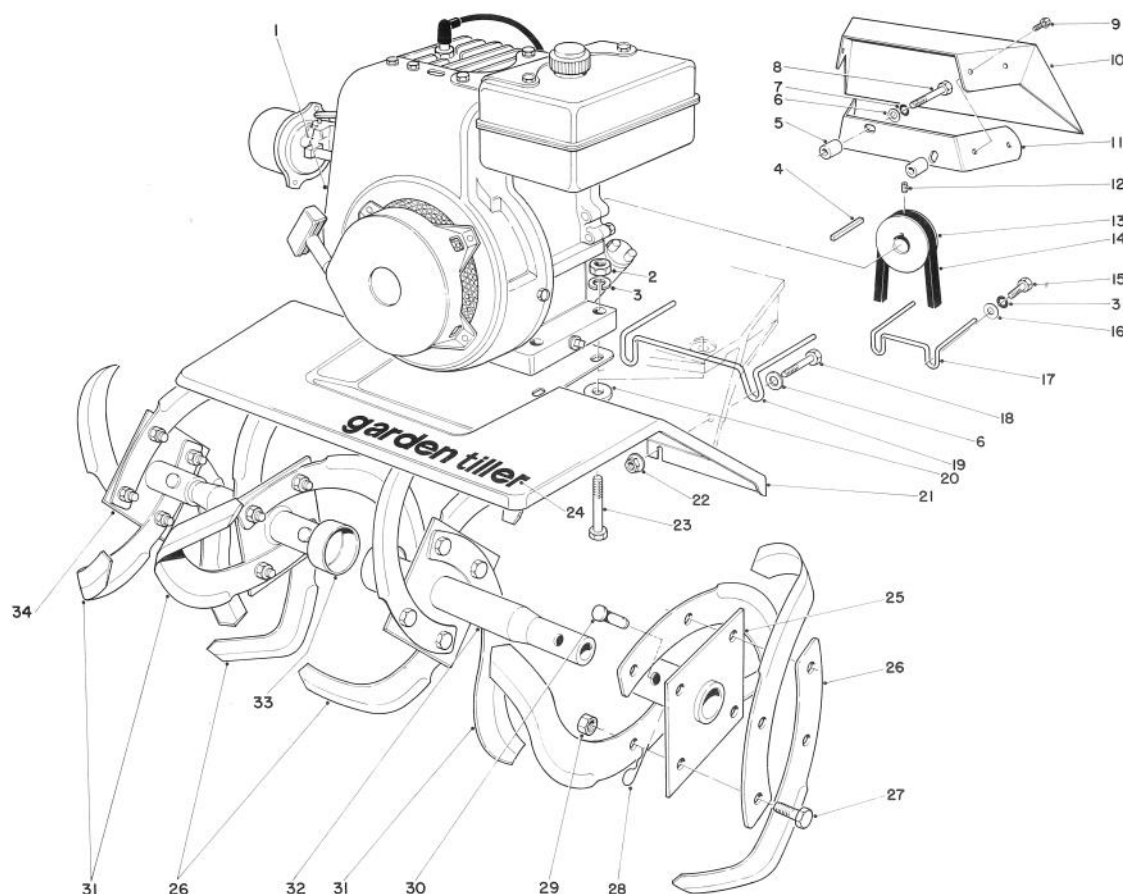
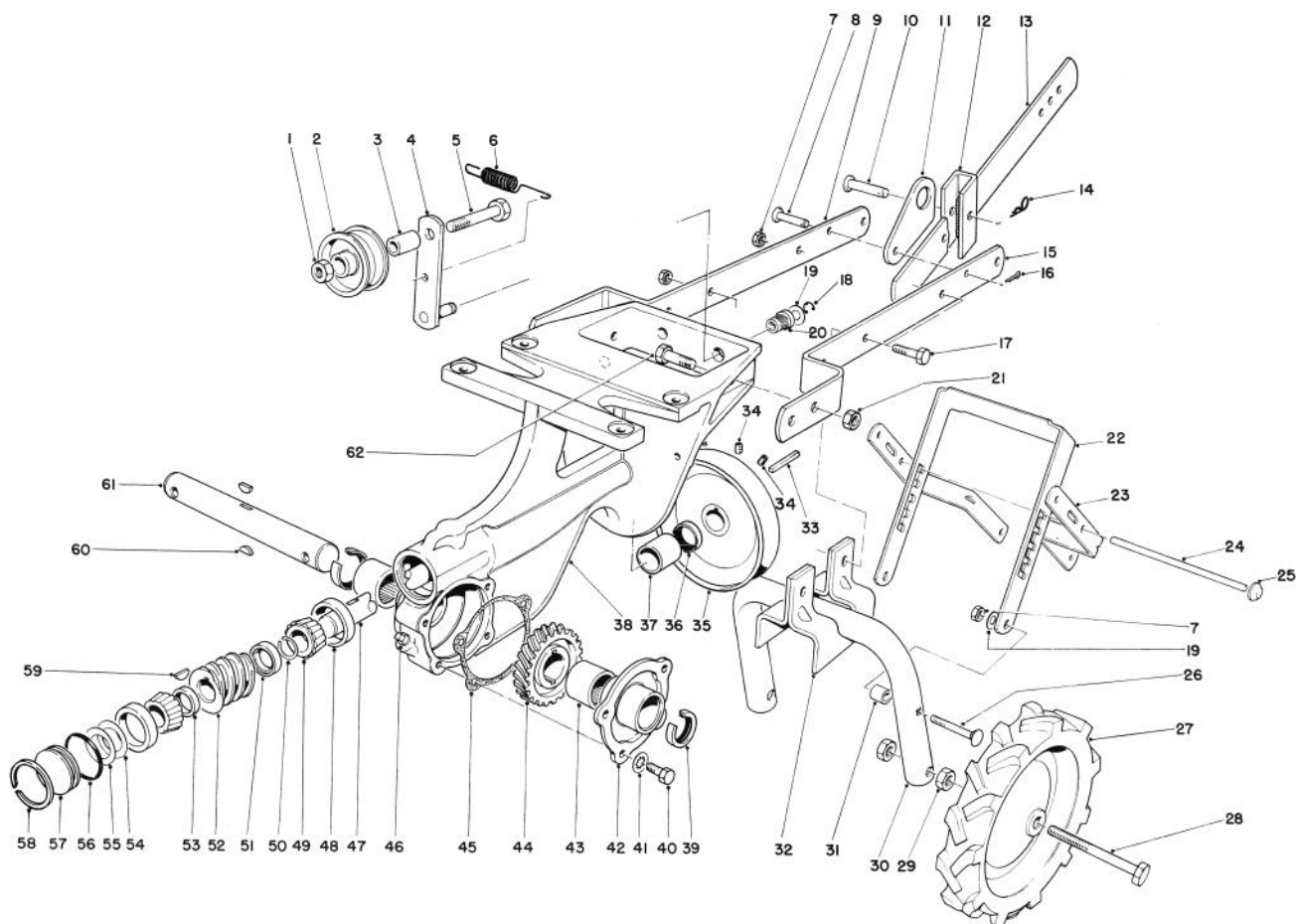


TORO®MODEL NO. 58007-1000001 THRU
2000001 & UP**PARTS
CATALOG****3.5 H.P. TILLER****TINE AND ENGINE ASSEMBLY**

Ref. No.	Part No.	Description	No. Used
1	221-510	Engine	1
2	3217-6	Nut	4
3	3253-4	Lockwasher	6
4	7-0036	Key	1
5	24-8990	Spacer	2
6	3256-22	Washer	4
7	3253-3	Lockwasher	2
8	321-11	Capscrew	2
9	32104-76	Screw Self Tapping	4
10	26-3670	Pulley Cover	1
11	26-3650	Strap — Belt Shield	1
12	3245-32	Hex Sprocket Set Screw	2
13	27-5820	Engine Pulley	1
14	26-3340	V-Belt	1
15	3210-3	Hex Hd. Capscrew	2
16	3256-23	Washer	2
17	26-3370	Belt Guide	1

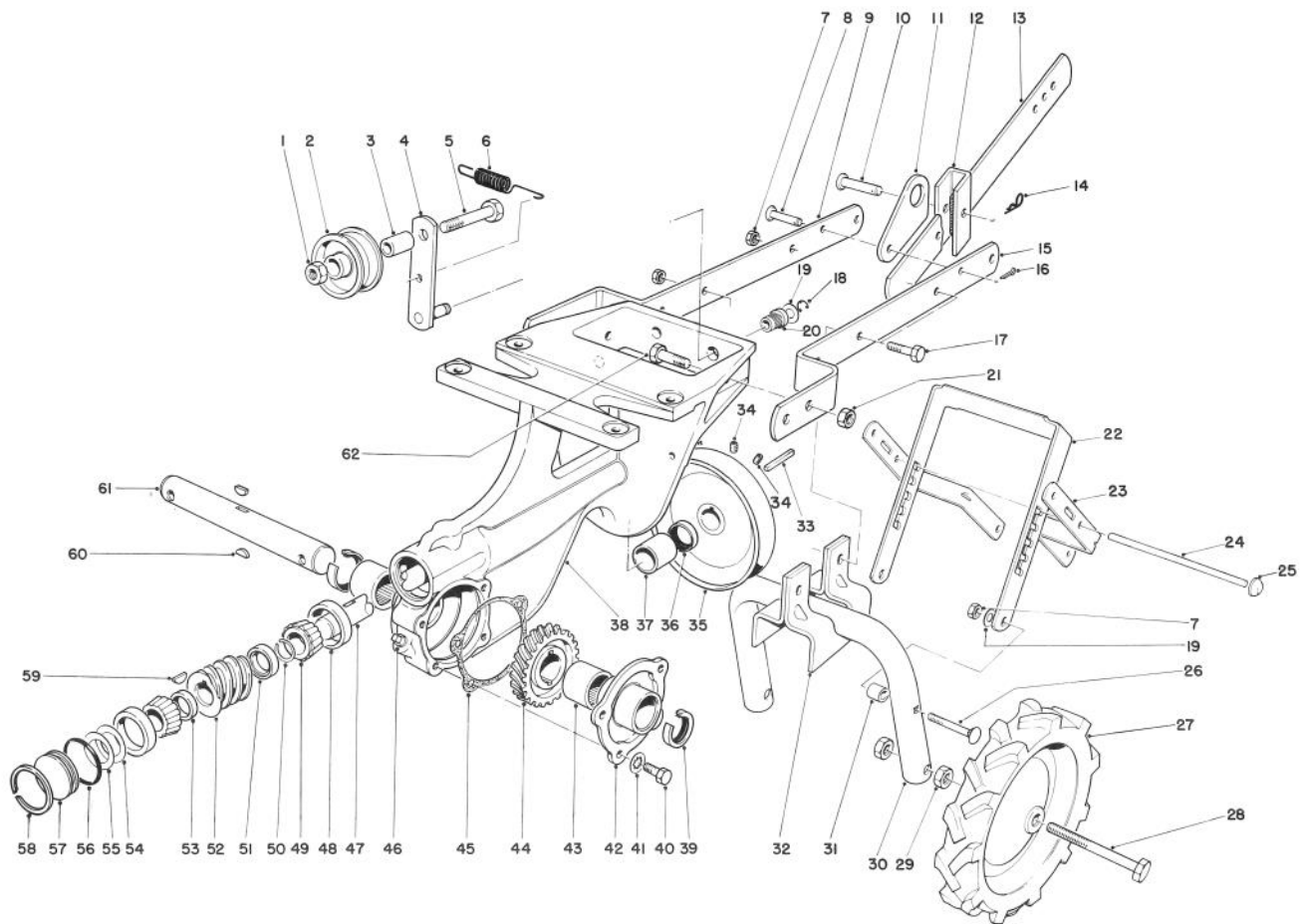
Ref. No.	Part No.	Description	No. Used
18	321-8	Capscrew	2
19	26-4030	Belt Guide — Worm Shaft	1
20	7-0081	Spacer	4
21	26-3660	Tine Shroud	1
22	32128-10	Flange Nut	2
23	322-11	Capscrew	4
24	17-8340	Decal — Garden Tiller	1
25	24-6960	Axle Assembly L.H. Outer	1
26	7-0103	Tine R.H.	8
27	323-7	Hex Hd. Capscrew	16
28	3290-250	Hair Pin Cotter	4
29	32149-10	Nut	16
30	7-2116	Tine Pin	4
31	7-0102	Tine L.H.	8
32	24-6970	Axle Assembly L.H. Inner	1
33	24-6950	Axle Assembly R.H. Inner	1
34	24-6940	Axle Assembly R.H. Outer	1



CHASSIS ASSEMBLY

Ref. No.	Part No.	Description	No. Used
1	32152-2	Locknut	1
2	7-0056	Pulley	1
3	5-2465	Spacer	1
4	26-7100	Idler Arm	1
5	323-12	Hex hd. Capscrew	1
6	26-3730	Spring Extension	1
7	32152-1	Locknut	5
8	283-14	Pin	1
9	26-3120	Drawbar R.H.	1
10	283-23	Pin	1
11	26-3750	Latch — Depth Gauge	1
12	26-3740	Bracket — Depth Gauge	1
13	26-3760	Depth Gauge	1
14	3290-255	Hair Pin Cotter	1
15	26-5850	Drawbar L.H.	1
16	3272-6	Cotter Pin	1
17	322-7	Capscrew	3
18	32120-35	Snap Ring	1
19	3256-23	Washer	3
20	7-0023	Idler Bearing	1
21	32149-10	Nut	4
22	26-3180	Lever Wheel Adjustment	1
23	26-3130	Handle Support	2

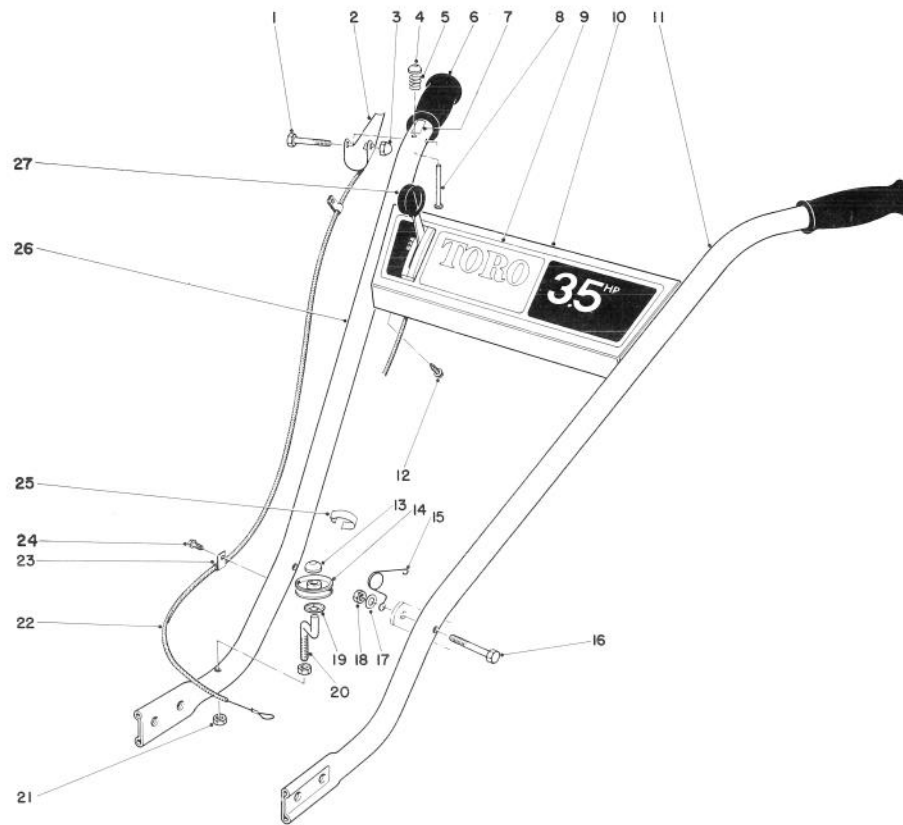
Ref. No.	Part No.	Description	No. Used
24	26-3230	Shaft — Wheel Adjustment	1
25	3290-390	Push On	2
26	3230-7	Carriage Bolt	2
27	26-3610	Wheel	2
28	26-3600	Wheel Bolt	2
29	32153-5	Locknut	4
30	26-3140	Axle Yoke	1
31	5-1537	Spacer	2
32	26-3150	Saddle Yoke	1
33	7-0036	Key	1
34	3241-5	Set Screw	2
35	26-3360	Pulley — Worm Shaft	1
36	253-84	Oil Seal	1
37	256-167	Bushing	1
38	26-2280	Chassis	1
39	7-0045	Oil Seal	2
40	3235-18	Hex Hd. Capscrew	4
41	3254-8	Lockwasher	4
42	7-0048	Cover	1
43	252-88	Needle Bearing	2
44	7-0047	Worm Wheel	1
45	7-0020	Gasket	1
46	281-1	Pipe Plug	1



CHASSIS ASSEMBLY (Continued)

Ref. No.	Part No.	Description	No. Used
47	7-0012	Worm Shaft	1
48	254-79	Bearing Cup	2
49	254-78	Bearing Cone	2
50	7-0013	Snap Ring	1
51	26-5800	Spacer Rear	1
52	7-0016	Worm Gear	1
53	7-0015	Spacer Front	1
54	23-7690	Shim (.010)	A/R

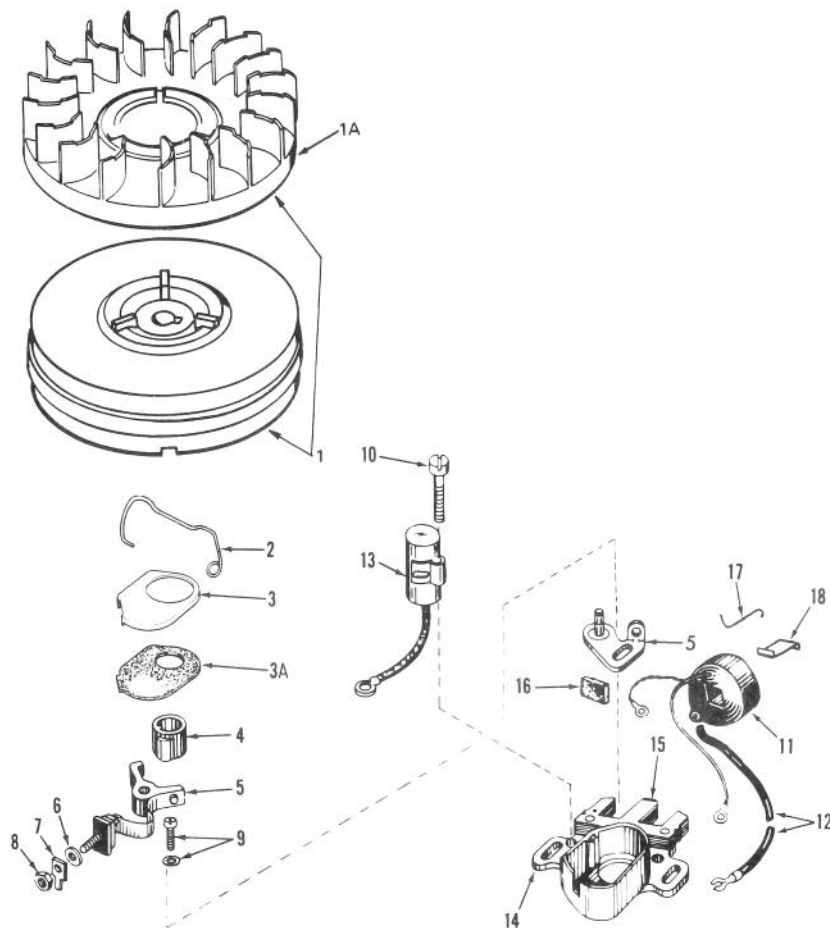
Ref. No.	Part No.	Description	No. Used
55	23-7700	Shim (.020)	A/R
56	237-71	"O" Ring	1
57	23-7710	Plug Tiller	1
58	7-0018	Snap Ring	1
59	3257-23	Woodruff Key	1
60	3257-33	Woodruff Key	2
61	7-0046	Shaft Worm Wheel	1
62	323-7	Capscrew	4



HANDLE ASSEMBLY

Ref. No.	Part No.	Description	No. Used
1	321-10	Capscrew	1
2	26-3630	Lift — Bail	1
3	32111-7	Nut — Acorn	1
4	32111-9	Cap Push-On	1
5	5-4723	Spring	1
6	235-20	Hand Grip	2
7	26-3710	Decal — Forward	1
8	26-3640	Pin — Lock In	1
9	26-3310	Decal — Escutcheon	1
10	17-9300	Escutcheon Panel	1
11	26-3380	L.H. Handle	1
12	32104-76	Self Tapping Screw	4
13	3290-396	Push On Cap	1
14	26-3490	Pulley Cable	1

Ref. No.	Part No.	Description	No. Used
15	26-3690	Spring — Torsion	2
16	322-10	Capscrew	2
17	3256-23	Washer Plain	2
18	32152-1	Nut — Top Deform	2
19	3290-395	Retainer — Push On	1
20	26-3470	Spindle Forward	1
21	32128-28	Nut	2
22	26-3450	Cable Assembly	1
23	2412-21	Clamp	2
24	32140-29	Self Tapping Screw	2
25	26-5890	Boden Clip	1
26	26-3440	Handle R.H.	1
27	26-3390	Throttle Control	1



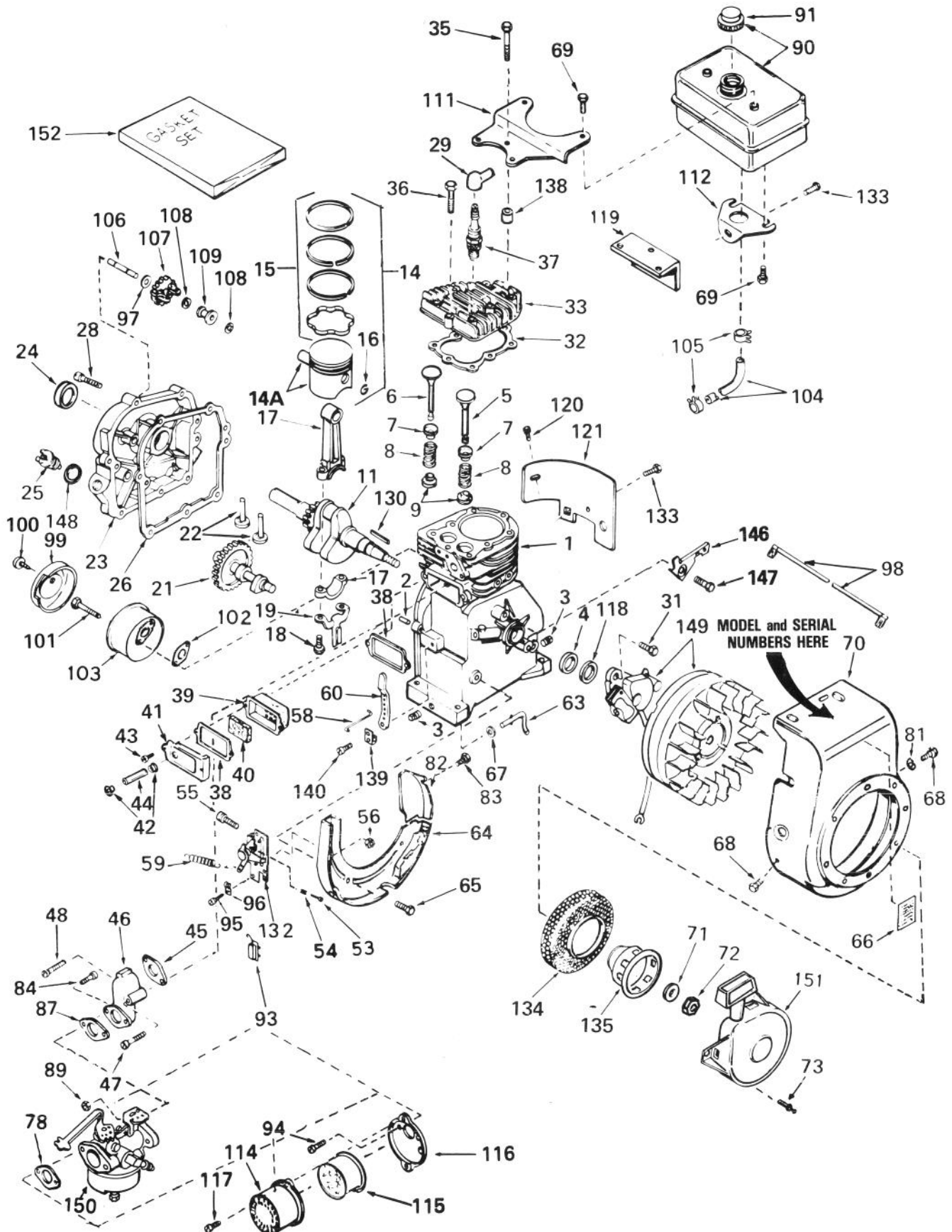
* MAGNETO NO. 611025

Ref. No.	Part No.	Description	No. Used
1	611024	Flywheel (Incl. Ref. #1A)	1
1A	610933	Fan, Blower	1
2	30551	Spring, Breaker Box Dust Cover	1
3	610947	Cover, Dust	1
3A	610955	Gasket, Dust Cover	1
4	30992	Cam, Breaker	1
5	30547A	Contact Assy., Breaker	1
6	610385	Washer, Terminal	1
7	33356	Tab, Ground Terminal	1
8	610408	Nut, Terminal	1
9	29181	Screw & Washer, Breaker	1

Ref. No.	Part No.	Description	No. Used
10	610593	Screw, Condenser	1
11	30560A	Coil Assy. (Incl. Ref. #12)	1
12	30554	Wire, Lead	1
13	30548B	Condenser	1
14	30545	Core & Plate	1
15	30561B	Stator Assy. (Incl. Ref. #2, 3, 3A, 5 thru 14 & 16 thru 18)	1
16	30549	Felt, Cam wiper	1
17	31311	Clip, Coil Locking	1
18	29629	Spring, Coil Wedge	1

*The complete magneto is not available as an assembly. The magneto number is shown for reference purposes only. Order component parts individually, as shown in parts list.

ENGINE TECUMSEH MODEL H35-45481N

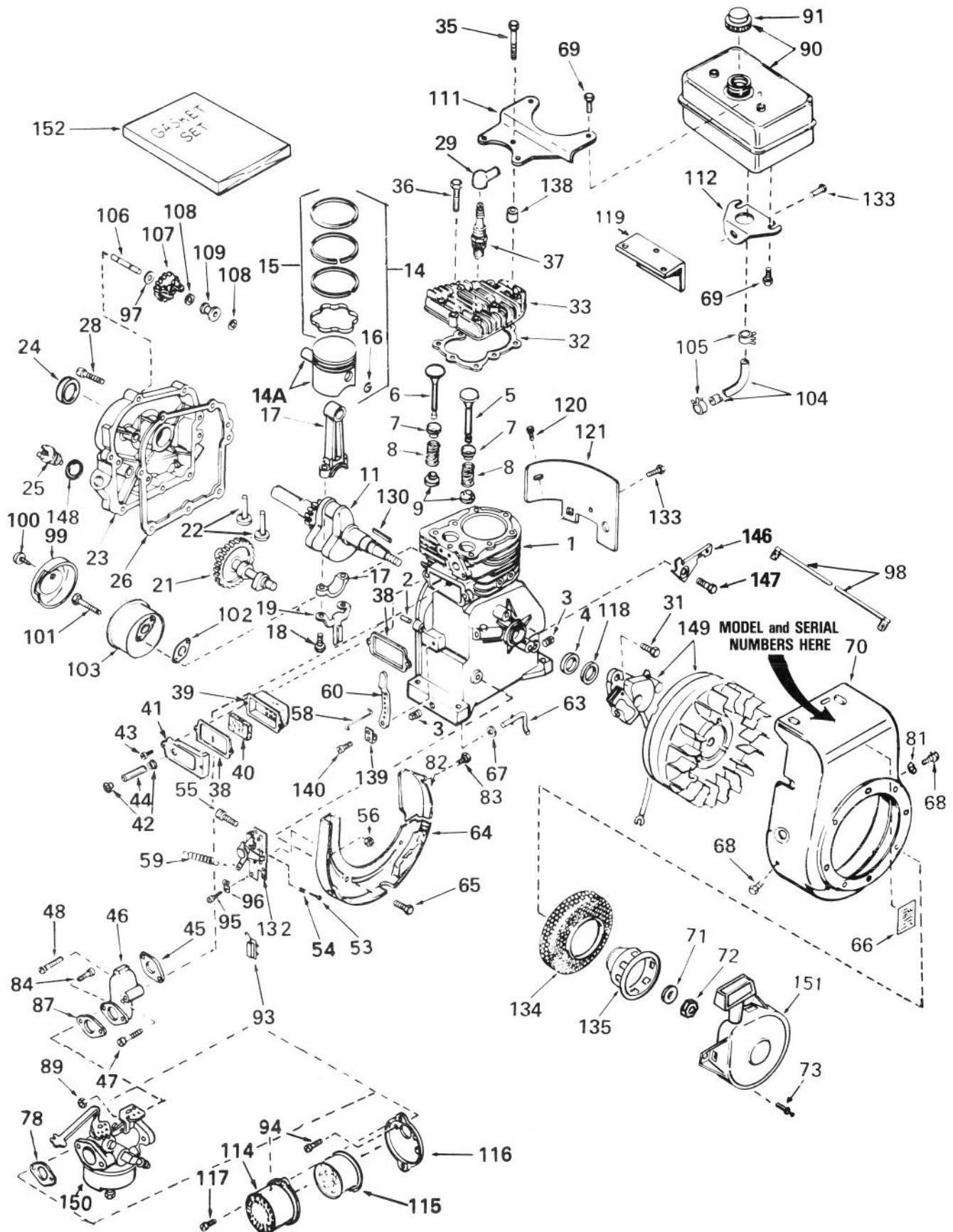


ENGINE TECUMSEH MODEL H35-45481N

Ref. No.	Part No.	Description	No. Used
1	34708	Cylinder Assembly (Incl. Ref. #2, 3 & 4)	1
2	26727	Pin, Dowel	2
3	27642	Plug, Sq. Hd. Pipe (Oil Drain)	2
4	32600	Seal, Oil	1
5	29314A	Valve, Intake (Std.) (Incl. Ref. #7, 8 & 9)	1
5	29315B	Valve, Intake (1/32" oversize) (Incl. Ref. #7, 8 & 9)	1
6	29313B	Valve, Exhaust (Std.) (Incl. Ref. #7, 8 & 9)	1
6	29315B	Valve, Exhaust (1/32" oversize) (Incl. Ref. #7, 8 & 9)	1
7	31671	Cap, Upper Valve Spring	2
8	31672	Spring, Valve	2
9	31673	Cap, Lower Valve Spring	2
11	34709	Crankshaft Assembly	1
14	34514	Piston, Pin & Ring Assy. (Std.) (Incl. Ref. #14A, 15 & 16)	1
14	34515	Piston, Pin & Ring Assy. (.010 oversize) (Incl. Ref. #14A, 15 & 16)	1
14	34516	Piston, Pin & Ring Assy. (.020 oversize) (Incl. Ref. #14A, 15 & 16)	1
14A	32538B	Piston & Pin Assy. (Incl. Ref. #16) (Std.)	1
14A	32548B	Piston & Pin Assy. (Incl. Ref. #16) (.010 oversize)	1
14A	32549B	Piston & Pin Assy. (Incl. Ref. #16) (.020 oversize)	1
15	28986	Ring Set, Piston (Std.)	1
15	28987	Ring Set, Piston (.010 oversize)	1
15	28988	Ring Set, Piston (.020 oversize)	1
16	20381	Ring, Piston Pin Retaining	2
17	30963B	Rod Assy., Connecting (Incl. Ref. #18 & 19)	1
18	32610A	Bolt, Connecting Rod	2
19	28594	Dipper, Oil	1
21	33149	Camshaft (Compression Release)	1
22	27241	Lifter, Valve	2
23	34773	Cover, Cylinder (Incl. Ref. #24, 25, 106 & 148)	1
24	26208	Seal, Oil	1
25	27625	Plug, Oil Filler (Incl. Ref. #148)	1
26	*27677	Gasket, Cylinder Cover	1
28	650488	Screw, Hex Hd.	7
29	610118	Cover, Spark Plug	1
31	650489	Screw, Hex Hd.	2

Ref. No.	Part No.	Description	No. Used
32	*29953B	Gasket, Cylinder Head	1
33	30579	Head, Cylinder	1
35	650694A	Screw, Hex Flange Hd.	5
36	6021A	Screw, Hex Flange Hd.	3
37	33636	Plug, Spark (Champion J-8 or equivalent) <u>Except for Canada</u>	1
37	34251 Canada	Resistor Spark Plug (Canadian Regulations require RJ-17LM resistor spark plug)	1
38	*27234	Gasket, Valve Spring Cover	2
39	27666	Breather Body & Valve Assy.	1
40	31410	Element, Breather	1
41	34146	Cover, Valve Spring	1
42	32446	Grommet, Breather Tube	2
43	650128	Screw, Fil. Hd.	2
44	32447	Tube, Breather	1
45	*26754	Gasket, Intake	1
46	28416	Pipe, Intake	1
47	650664	Screw, Fil. Hd.	1
48	30646	Screw, Fil. Hd.	1
53	650549	Screw, Fil. Hd.	1
54	31342	Spring, Compression	1
55	+650139	Screw, Fil. Hd.	2
56	+30322	Nut & Lockwasher Assy.	2
58	31858	Link, Governor-to-Throttle	1
59	31426	Spring, Extension	1
60	31510	Lever, Governor	1
63	31334	Rod, Governor	1
64	+33342	Baffle, Blower Housing	1
65	650561	Screw, Hex Washer Hd.	2
66	34374	Decal, Name & Instruction	1
67	28277	Washer, Flat	1
68	29212	Screw, Hex Hd.	2
69	650665	Screw, Hex Washer Hd. Self-tap	4
70	**33663B	Housing, Blower	1
71	650815	Washer, Belleville	1
72	650816	Nut, Flywheel	1
73		Rivet, Pop (Can be purchased locally)	4
78	*27272	Gasket, Air Cleaner	1
81	650168	Washer, Flat	1
82	33341	Baffle, Extension	1
83	650701	Screw, Hex Washer Hd. Self Drilling	1
84	6202	Screw, Hex Hd.	2
87	*26756	Gasket, Carburetor	1
89	29752	Nut & Lockwasher Assy.	2
90	34711	Tank Assy., Fuel (Incl. Ref. #69 & 91)	1
91	32387A	Cap, Fuel Tank	1
93	610973	Terminal Assy.	1

ENGINE TECUMSEH MODEL H35-45481N (Continued)



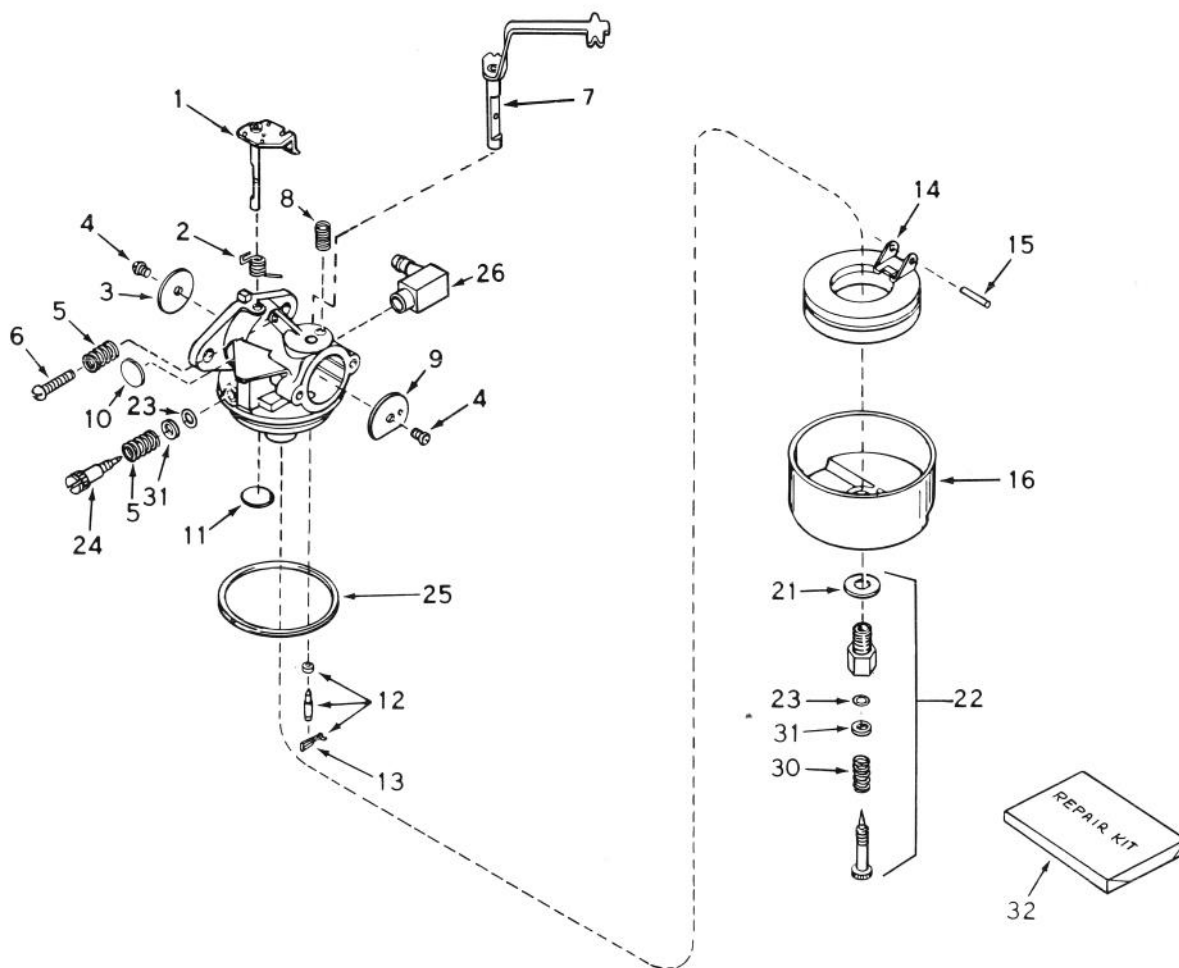
ENGINE TECUMSEH MODEL H35-45481N (Continued)

Ref. No.	Part No.	Description	No. Used
94	28820	Screw, Fil. Hd.	2
95	28942	Screw, Hex Washer Hd.	1
96	27793	Clip, Conduit	1
97	30590A	Washer, Flat	1
98	34231	Wire, Ground	1
99	30997	Cover, Muffler	1
100	650665	Screw, Hex Washer Hd. Self-tap	1
101	650493	Screw, Hex Hd.	2
102	*30081	Gasket, Muffler	1
103	30996	Muffler	1
104	30705	Line, Fuel	1
105	26460	Clamp, Fuel Line	2
106	30574	Shaft, Mechanical	1
107	30591	Gear Assy., Governor (Incl. Ref. #97)	1
108	29193	Ring, Retaining	2
109	30588A	Spool, Governor	1
111	28371B	Bracket, Fuel Tank — Upper	1
112	34182	Bracket, Fuel Tank — Lower	1
114	31715	Body, Air Cleaner	1
115	31700	Element, Air Cleaner	1
116	31708	Bracket, Air Cleaner	1
117	650152	Screw, Fil. Hd.	2
118	33876	Gasket, Stator	1
119	33344	Baffle, Heat	1

Ref. No.	Part No.	Description	No. Used
120	650128	Screw, Fil. Hd.	1
121	29745	Extension, Blower Housing	1
130	610961	Key, Flywheel	1
132	†33879A	Speed Control Assy. (Incl. Ref. #53 thru 56)	1
133	650561	Screw, Hex Washer Hd.	1
134	33668	Screen, Starter	1
135	34694	Cup, Starter	1
138	28212	Spacer	2
139	31335	Clamp, Governor Lever	1
140	650548	Screw, Hex Washer Hd.	1
146	34212	Bracket, Hold Down	1
147	30200	Screw, Hex Washer Hd. Self-tap	1
148	*29673	Gasket, Oil Filler	1
149	611025	Magneto (The complete magneto is not available as an assembly. The magneto number is shown for reference purposes only. Order component parts individually, as shown in parts list.)	1
150	631921	Carburetor (Incl. Ref. #87)	1
151	**590420	Starter Assy., Rewind	1
152	33233	Gasket Set (Incl. items marked *)	1

** In original production the starter is riveted to the blower housing. If either the starter or blower housing requires replacement, both will have to be ordered. Also order four (4) nuts illustrated to attach replacement starter to replacement blower housing.

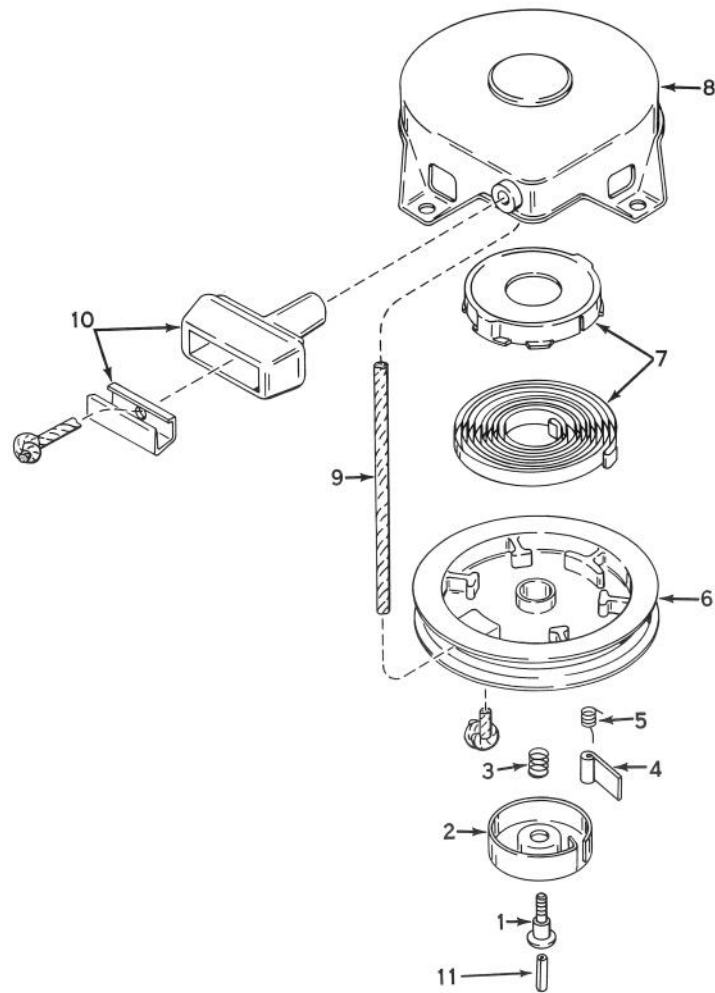
† In original production the speed control assembly is riveted to the blower housing baffle. Replacement speed control assembly includes screws and nuts for mounting. Replacement baffle has threaded holes.



CARBURETOR NO. 631921

Ref. No.	Part No.	Description	No. Used
1	631615	Shaft & Lever Assy., Throttle	1
2	631279	Spring, Throttle Return	1
3	631036	Shutter, Throttle	1
4	650506	Screw	2
5	630766	Spring, Idle Regulating Screw	2
6	650417	Screw, Idle Regulating	1
7	631919	Shaft & Lever Assy., Choke	1
8	630735	Spring, Choke Stop	1
9	31837	Shutter, Choke	1
10	*630748	Plug, Welch	1
11	*631027	Plug, Welch	1
12	*631021	Inlet Needle, Seat & Clip Assy. (Incl. Ref. #13)	1
13	631022	Clip, Inlet Needle	1

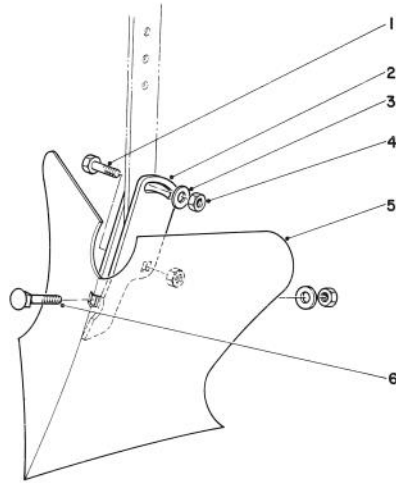
Ref. No.	Part No.	Description	No. Used
14	631023	Float, Carburetor	1
15	*631024	Shaft, Float	1
16	631867	Bowl, Float	1
21	27110	Gasket, Bowl-to-Body	1
22	*31839	Adjustment Screw Assy., Main (Incl. Ref. #21, 23, 30 & 31)	1
23	*630740	"O" Ring, Adjustment Screw	2
24	*631078	Screw, Idle Adjustment	1
25	*631028	Gasket, Bowl-to-Body	1
26	631775	Fitting, Fuel Inlet	1
30	630738	Spring, Main Adjustment Screw	1
31	630739	Washer, Flat	2
32	31840	Repair Kit (Incl. items marked *)	1



REWIND STARTER NO. 590420

Ref. No.	Part No.	Description	No. Used
1	590409A	Screw, Retainer	1
2	590410	Retainer, R.H.	1
3	590411	Spring, Brake	1
4	590148	Dog, Starter	1
5	590412	Spring, R.H. Dog	1
6	590413A	Pulley	1

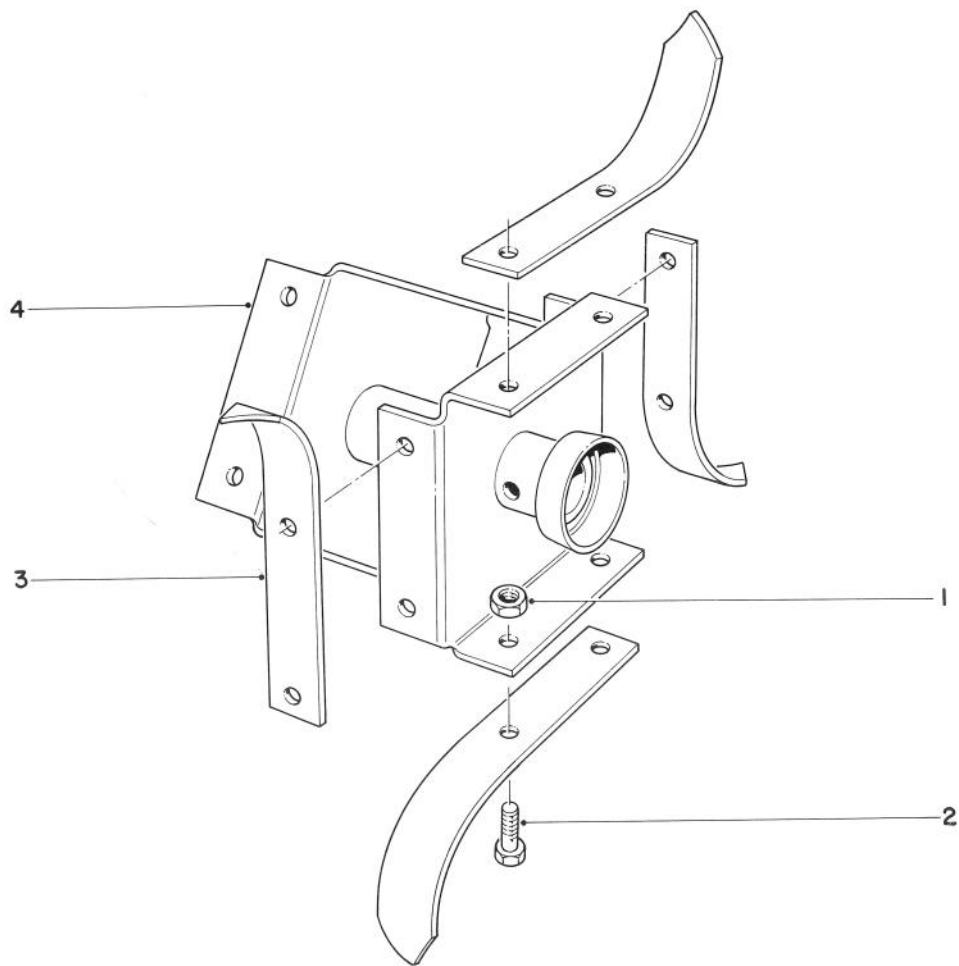
Ref. No.	Part No.	Description	No. Used
7	590414	Spring & Keeper Assy.	1
8	590415	Housing Assy., Starter (Incl. Ref. #1)	1
9	590451A	Rope, Starter	1
10	590387	Handle Assy., Starter	1
11	590459	Pin, Centering	1



8" FURROWING TOOL MODEL NO. 59008 (Optional)

Ref. No.	Part No.	Description	No. Used
1	323-7	Capscrew	2
2	7-1512	Clamp	2
3	3256-4	Washer	2

Ref. No.	Part No.	Description	No. Used
4	3217-7	Nut	3
5	7-1491	Shovel	1
6	3236-10	Carriage Bolt	1

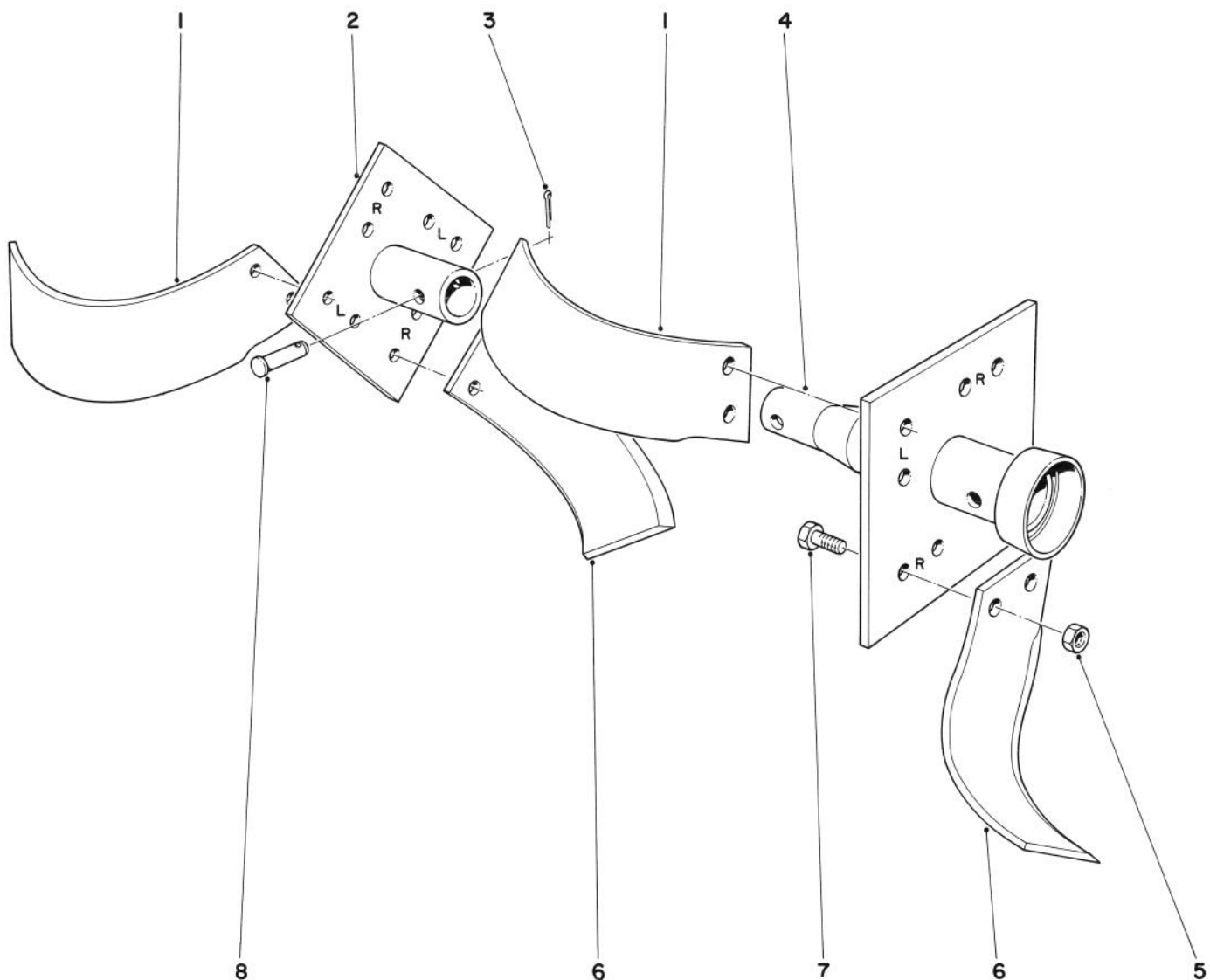


PICK TINE KIT MODEL NO. 17-8200 (Optional)

Ref. No.	Part No.	Description	No. Used
1	32152-2	Nut	32
2	323-4	Capscrew	32
3	17-8260	Pick Tine	16

Ref. No.	Part No.	Description	No. Used
4	18-8920	Axle Welded R.H.	1
*	17-8270	Axle Welded L.H.	1

*Not Illustrated



SLASHER TINE KIT MODEL NO. 17-8620 (Optional)

Ref. No.	Part No.	Description	No. Used
1	17-8660	Slasher Tine L.H.	8
2	17-9510	Outer Axle R.H.	1
*	17-8910	Outer Axle L.H.	1
3	3272-7	Cotter Pin	2
4	17-9500	Inner Axle R.H.	1

Ref. No.	Part No.	Description	No. Used
*	17-8900	Inner Axle L.H.	1
5	32152-2	Locknut	32
6	17-8650	Slasher Tine R.H.	8
7	323-7	Capscrew	32
8	7-2116	Tine Pin	2

*Not Illustrated

The Toro Promise

A ONE YEAR LIMITED WARRANTY

The Toro Company promises to repair your TORO Product if defective in materials or workmanship. The following time periods from the date of purchase apply:

Residential Product	1 Year
Residential Products Used Commercially . . .	45 Days

The costs of parts and labor are included, but the customer pays the transportation costs. Just return any residential product to an Authorized TORO Service Dealer or TORO Distributor.

Should you feel your TORO Product is defective and wish to rely on The Toro Promise, the following procedure is recommended:

1. Contact any Authorized TORO Service Dealer, TORO Master Service Dealer, or TORO Distributor (the Yellow Pages of your telephone directory is a good reference source).
2. He will either instruct you to return the product to him or recommend another Authorized TORO Service outlet which might be more convenient.
3. Bring the product along with your original sales slip, or other evidence of purchase date, to the service dealer.
4. The servicing dealer will inspect the unit, advise you whether the product is defective and, if so, make all repairs necessary to correct the defect without extra charge to you.

If for any reason you are dissatisfied with the dealer's analysis of the defect or the service performed, you may contact us.

Write:

TORO Consumer Service Department
8111 Lyndale Avenue South
Minneapolis, Minnesota 55420

The above remedy of product defects through repair by an Authorized TORO Service Dealer is the purchaser's sole remedy for any defect.

THERE IS NO OTHER EXPRESS WARRANTY. ALL IMPLIED WARRANTIES OF MERCHANTABILITY AND FITNESS FOR USE ARE LIMITED TO THE DURATION OF THE EXPRESS WARRANTY.

Some states do not allow limitations on how long an implied warranty lasts, so the above limitation may not apply to you.

This warranty applies only to parts or components which are defective and does not cover repairs necessary due to normal wear, misuse, accidents, or lack of proper maintenance. Regular, routine maintenance of the unit to keep it in proper operating condition is the responsibility of the owner.

All warranty repairs reimbursable under The Toro Promise must be performed by an Authorized TORO Service Dealer using Toro approved replacement parts.

Repairs or attempted repairs by anyone other than an Authorized TORO Service Account are not reimbursable under The Toro Promise. In addition, these unauthorized repair attempts may result in additional malfunctions, the correction of which is not covered by warranty.

THE TORO COMPANY IS NOT LIABLE FOR INDIRECT, INCIDENTAL OR CONSEQUENTIAL DAMAGES IN CONNECTION WITH THE USE OF THE PRODUCT INCLUDING ANY COST OR EXPENSE OF PROVIDING SUBSTITUTE EQUIPMENT OR SERVICE DURING PERIODS OF MALFUNCTION OR NON-USE.

Some states do not allow the exclusion or limitation of incidental or consequential damages, so the above limitation or exclusion may not apply to you.

This warranty gives you specific legal rights, and you may also have other rights which vary from state to state.

COUNTRIES OTHER THAN THE UNITED STATES OR CANADA

Customers who have purchased TORO products exported from the United States or Canada should contact their TORO Distributor (Dealer) to obtain guarantee policies for your country, province or state. If for any reason

you are dissatisfied with your Distributor's service or have difficulty obtaining guarantee information, contact the TORO importer. If all other remedies fail, you may contact us at The Toro Company.

PRODUCT CHANGES

In an effort to make improvements available to TORO owners as quickly as possible, minor changes are incorporated into Toro's products from time to time that do not become immediately shown in the Parts Catalog. If such a change apparently has been made in your unit, which is not reflected in your manual, see your TORO Distributor or his Authorized TORO Service Dealer for information and part numbers.

IDENTIFICATION AND ORDERING

Model and Serial Numbers

The tiller has two identification numbers: a model number and a serial number. The two numbers are stamped on a decal which is located on left rear side of tine shroud. In any correspondence concerning the tiller, supply model and serial numbers to assure that correct information and replacement parts are obtained.

To order replacement parts from an Authorized TORO Service Dealer, supply the following information.

1. Model and serial numbers of the tiller.
2. Part number, description, and quantity of part(s) desired.

Note: Do not order by reference number if a parts catalog is being used; use the PART NUMBER.

Keep Your TORO All Toro  ***Insist on Genuine Toro Parts***

MAINTENANCE RECORD

[illegible]