



Customer Bulletin

Commercial Products

Rotaries #14-65

September 28, 2023

Safety Rework—Cutting Deck Latch Replacement

Groundsmaster 3200, 3300, and 3310 Cutting Unit



Safety Alert



Note: Find the latest operator's manuals, service manuals, schematics, parts catalogs, and customer bulletins at www.Toro.com.

Bulletin Type

Safety Notice

Affected Units

Description	Model Number(s)	Serial Number(s)
60 inch, side discharge cutting unit	31970	405600000 through 412895019
60 inch, rear discharge cutting unit	31971	405600000 through 412890637
72 inch, side discharge cutting unit	31972	405600000 through 412884339
72 inch, rear discharge cutting unit	31973	405600000 through 412549718
60 inch, rear discharge cutting unit	31974	405600000 through 412893292
72 inch, rear discharge cutting unit	31975	405600000 through 414447177

Distribution

For Distributor and Customer Bulletin only

Attached Customer Bulletin may be copied to customers with affected product or instruct customers to access Service Bulletins at www.toro.com.

Situation

Immediate Attention Necessary

The cutting-unit service latch will not retain a vertical position if the cutting-unit lift arms become lowered.

Corrective Action

Replace the existing latch arm with the updated new latch arm (Part No. 147-0066) on all cutting units listed in the rework completion list.

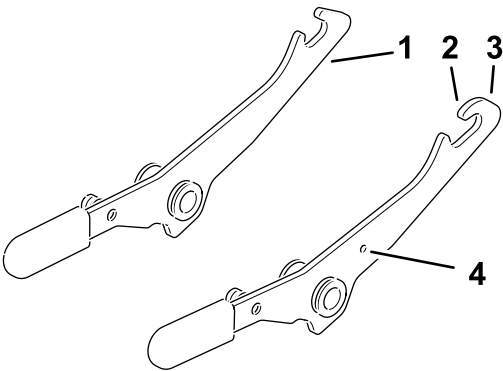


Figure 1

1. Existing latch arm

2. New shape to the hook
3. New latch arm

4. New hole for quick identification

Safety Awareness

Follow reasonable and customary safety precautions.

Parts

Currently available

Toro Part No.	Part Description	Quantity
147-0066	Latch arm	1

Parts Retention

Not applicable

Special Tools Required

Not applicable

References

Find the latest operator’s manuals, service manuals, schematics, parts catalogs, and customer bulletins at www.Toro.com.

Resource	Search Term
<i>Operator’s Manual</i>	Model and serial number for the machine.
<i>Service Manual</i>	Model and serial number for the machine.

Service Instructions

Replacing the Latch Arm

1. Order the new latch arm, Part No. 147-0066; refer to [Figure 2](#).
2. Park the machine on a level surface, engage the parking brake, lower the attachment, shut off the engine, and remove the key.
3. Remove the spring attached to the existing latch arm.
4. Remove the existing latch arm from the machine.
5. Install the new latch arm; refer to [Figure 2](#).

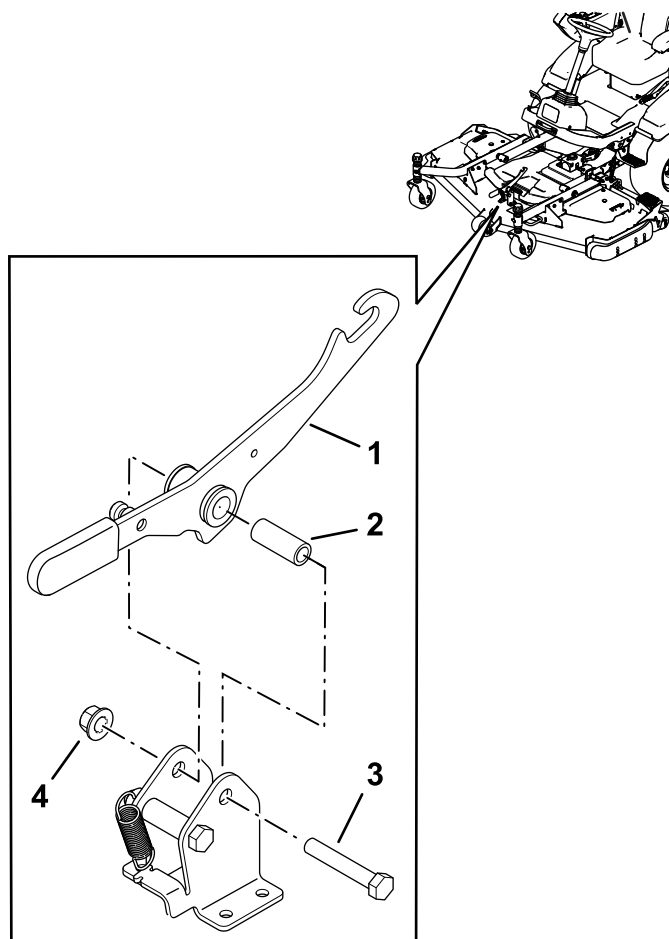


Figure 2

- | | |
|--------------|---------|
| 1. Latch arm | 3. Bolt |
| 2. Spacer | 4. Nut |

-
6. Install the spring to the new latch.
 7. Raise the mower deck into the maintenance position and lower it to ensure that the issue has been resolved.