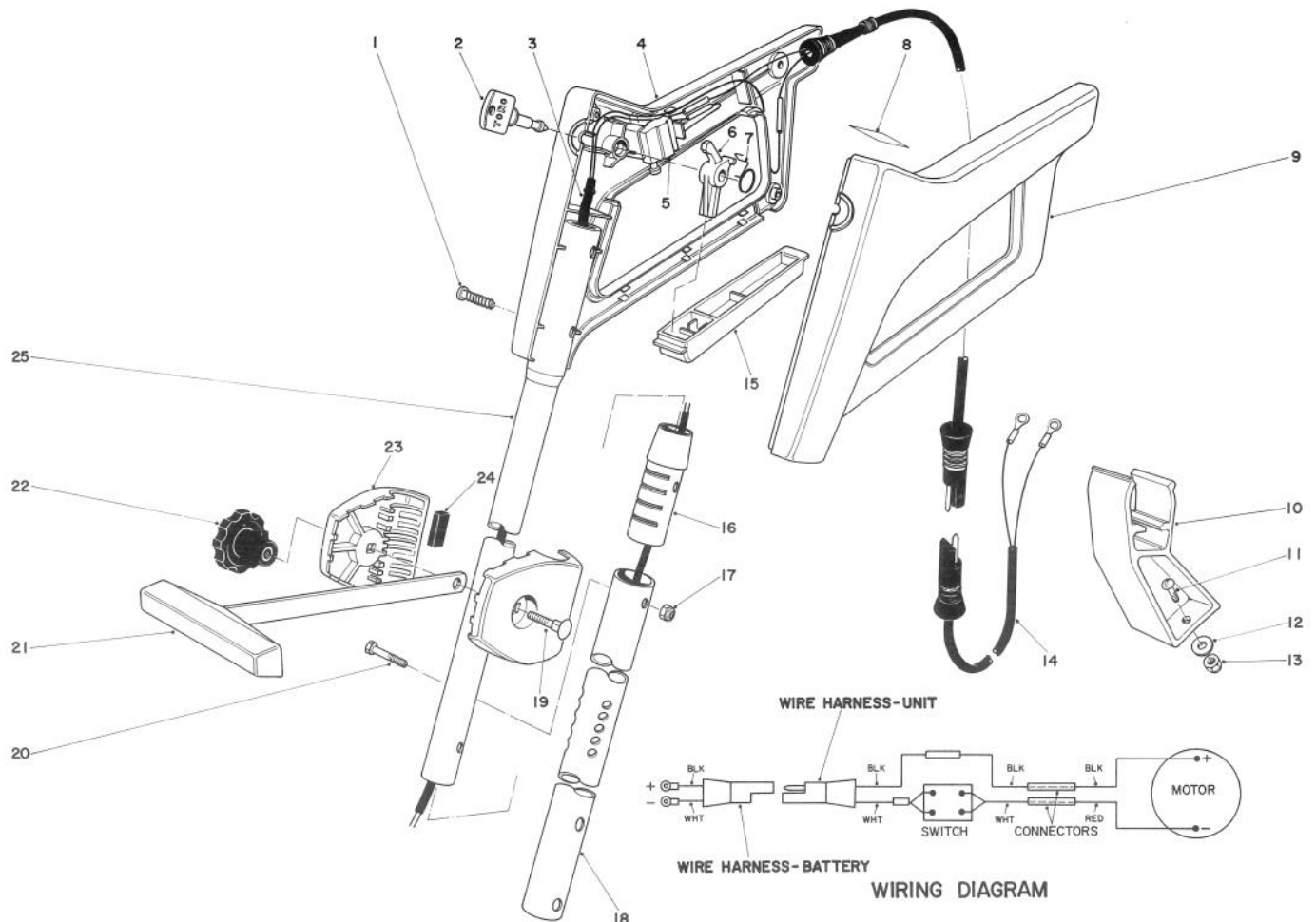


TORO®

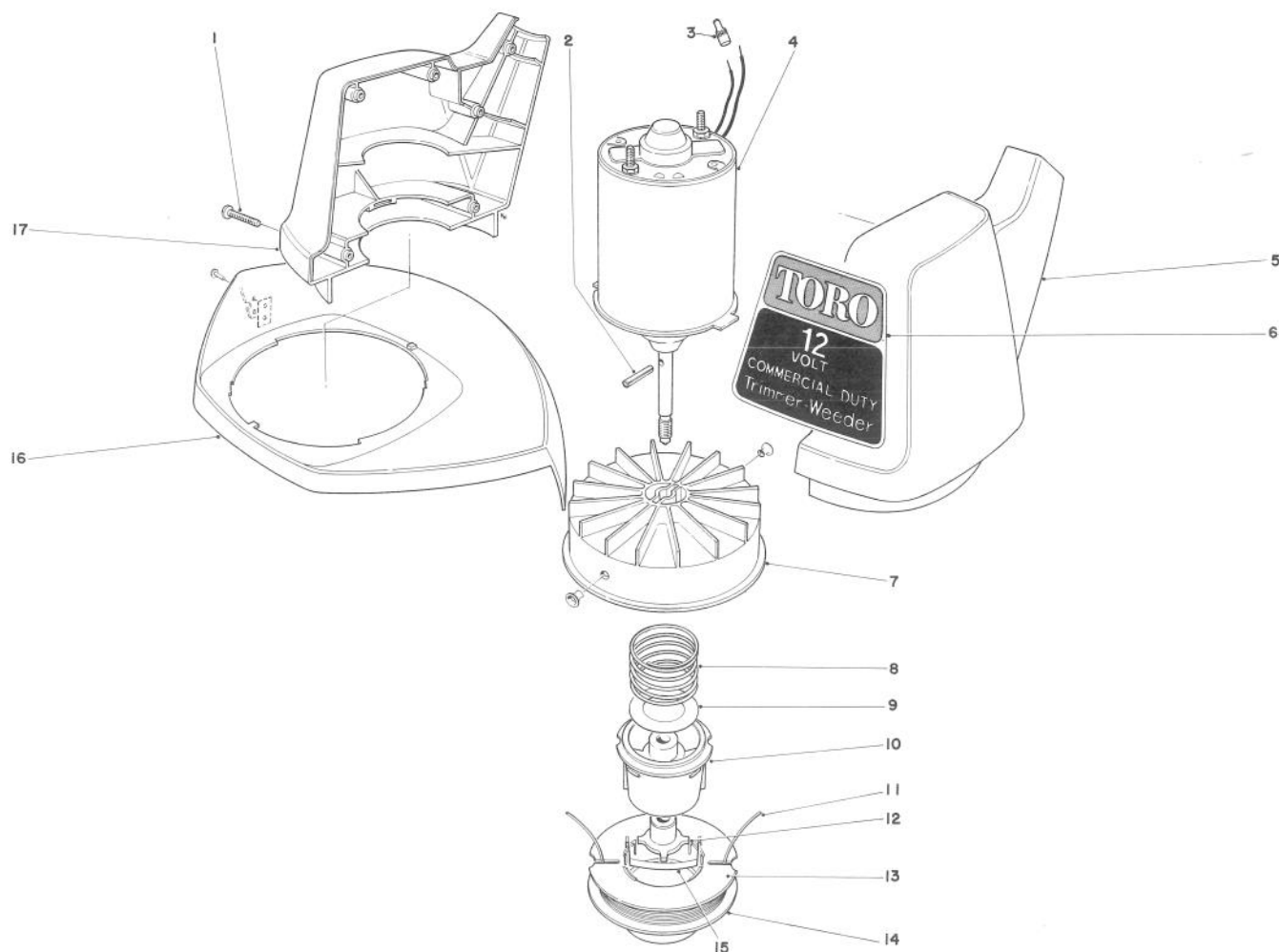
MODEL NO. 30950 — 100001 & UP

**PARTS
CATALOG****12 VOLT D.C. TORO TRIMMER**
COMMERCIAL DUTY**HANDLE ASSEMBLY**

Ref. No.	Part No.	Description	No. Used
1	32104-121	Screw	5
2	38-8310	Key	2
3	41-6700	Wire Harness — Unit	1
4	43-7650	Control Grip R.H.	1
5	36-8340	Switch	1
6	41-9870	Lockout	1
7	38-8330	Spring	1
8	41-5820	Decal — 12 Volt	1
9	43-7640	Control Grip L.H.	1
10	41-6520	Trimmer Clip	2
11	321-3	Screw	4
12	3256-16	Washer	4
13	3296-42	Locknut	4

Ref. No.	Part No.	Description	No. Used
*	3290-378	Cable Tie	2
14	41-6660	Wire Harness — Battery	1
15	42-2870	Switch Bar	1
16	33-9180	Tubing Sleeve	1
17	3296-12	Locknut	1
18	33-9140	Tubing — Lower	1
19	33-5790	Carriage Bolt	1
20	29-7440	Screw	1
21	33-9200	Tee Handle	1
22	19-4050	Handle Release Knob	1
23	33-9990	Clam Shell (Incl. Ref. #24)	2
24	29-7470	Rubber Insert	4
25	41-6430	Tubing — Upper	1

*Not Illustrated



MOTOR AND HOUSING ASSEMBLY

Ref. No.	Part No.	Description	No. Used
1	32104-120	Screw	6
2	32121-88	Spirol Pin	1
3	218-511	Connector	2
4	41-6710	Motor D.C.	1
5	29-7052	Motor Housing L.H.	1
6	41-5810	Decal — Commercial Duty	1
7	33-9240	Drum W/Eyelets	1
8	29-7130	Spring	1
9	3256-42	Washer	1
10	33-6230	Spool Core	1

Ref. No.	Part No.	Description	No. Used
11	33-7910	50', .065" Dia. Line In Coil	1
12	29-7140	Driver	1
13	29-7380	Empty Spool	1
14	29-7160	50', .065" Dia. Line Prewound On Spool	1
15	33-8940	Saddle Clip	1
16	33-9110	Shield (With Cut-Off Blade)	1
17	29-7062	Motor Housing R.H.	1
*	41-6720	Loose Parts Kit	1

*Not Illustrated

The Toro Promise

A ONE YEAR LIMITED WARRANTY ON COMMERCIAL PRODUCTS OTHER THAN WALK ROTARY MOWERS, TRIMMERS AND BLOWERS.

The Toro Company promises to repair any TORO Product if defective in materials or workmanship. The following time periods from the date of purchase apply:

Commercial Products	1 Year
Hevi-Duty Walk Rotary Mowers	90 Days
Trimmers and Blowers	90 Days

The costs of parts and labor are included, but the customer pays the transportation costs on walk rotary mowers, trimmers and blowers.

If you feel your TORO product is defective and wish to rely on The Toro Promise, the following procedure is recommended:

1. Contact your Authorized TORO Distributor or Commercial Dealer (the Yellow Pages of your telephone directory is a good reference source).
2. The TORO Distributor or Commercial Dealer will advise you on the arrangements that can be made to inspect and repair your product.
3. The TORO Distributor or Commercial Dealer will inspect the product and advise you whether the product is defective and, if so, make all repairs necessary to correct the defect without an extra charge to you.

If for any reason you are dissatisfied with the distributor's analysis of the defect or the service performed, you may contact us.

Write:

TORO Commercial Products Service Department
8111 Lyndale Avenue South
Minneapolis, Minnesota 55420

The above remedy of product defects through repair by an Authorized TORO Distributor or Commercial Dealer is the purchaser's sole remedy for any defect.

THERE IS NO OTHER EXPRESS WARRANTY. ALL IMPLIED WARRANTIES OF MERCHANTABILITY AND FITNESS FOR USE ARE LIMITED TO THE DURATION OF THE EXPRESS WARRANTY.

Some states do not allow limitations on how long an implied warranty lasts, so the above limitation may not apply to you.

This Warranty applies only to parts or components which are defective and does not cover repairs necessary due to normal wear, misuse, accidents, or lack of proper maintenance. Regular, routine maintenance of the unit to keep it in proper condition is the responsibility of the owner.

All warranty repairs reimbursable under the Toro Promise must be performed by an Authorized TORO Commercial Dealer or Distributor using Toro approved replacement parts.

Repairs or attempted repairs by anyone other than an Authorized TORO Distributor or Commercial Dealer are not reimbursable under the Toro Promise. In addition, these unauthorized repair attempts may result in additional malfunctions, the correction of which is not covered by warranty.

THE TORO COMPANY IS NOT LIABLE FOR INDIRECT, INCIDENTAL OR CONSEQUENTIAL DAMAGES IN CONNECTION WITH THE USE OF THE PRODUCT INCLUDING ANY COST OR EXPENSE OF PROVIDING SUBSTITUTE EQUIPMENT OR SERVICE DURING PERIODS OF MALFUNCTION OR NON-USE.

Some states do not allow the exclusion or limitation of incidental or consequential damages, so the above limitation or exclusion may not apply to you.

This warranty gives you specific legal rights, and you may also have other rights which vary from state to state.

COUNTRIES OTHER THAN THE UNITED STATES OR CANADA

Customers who have purchased TORO products exported from the United States or Canada should contact their TORO Distributor (Dealer) to obtain guarantee policies for your country, province or state. If for any reason you are dissatisfied with your Distributor's service or have difficulty obtaining guarantee information, contact

the TORO importer. If all other remedies fail, you may contact us at The Toro Company.

International Group
Service Department
One Corporate Center
7401 Metro Boulevard
Minneapolis, Minnesota 55435 U.S.A.

PRODUCT CHANGES

In an effort to make improvements available to TORO owners as quickly as possible, minor changes are incorporated into Toro's products from time to time that do not become immediately shown in the Parts Catalog. If such a change apparently has been made in your unit, which is not reflected in your manual, see your TORO Distributor or his Authorized TORO Service Dealer for information and part numbers.

IDENTIFICATION AND ORDERING

Model and Serial Numbers

The Trimmer has two identification numbers: a model number and a serial number. The two numbers are stamped on a plate which is located on the upper tubing below the handle. In any correspondence concerning the trimmer, supply model and serial numbers to assure that correct information and replacement parts are obtained.

To order replacement parts from an Authorized TORO Distributor, supply the following information:

1. Model and serial numbers of the trimmer.
2. Part number, description, and quantity of part(s) desired.

Note: Do not order by reference number if a parts catalog is being used; use the PART NUMBER.

Keep Your TORO All Toro  ***Insist on Genuine Toro Parts***

MAINTENANCE RECORD

[illegible]