



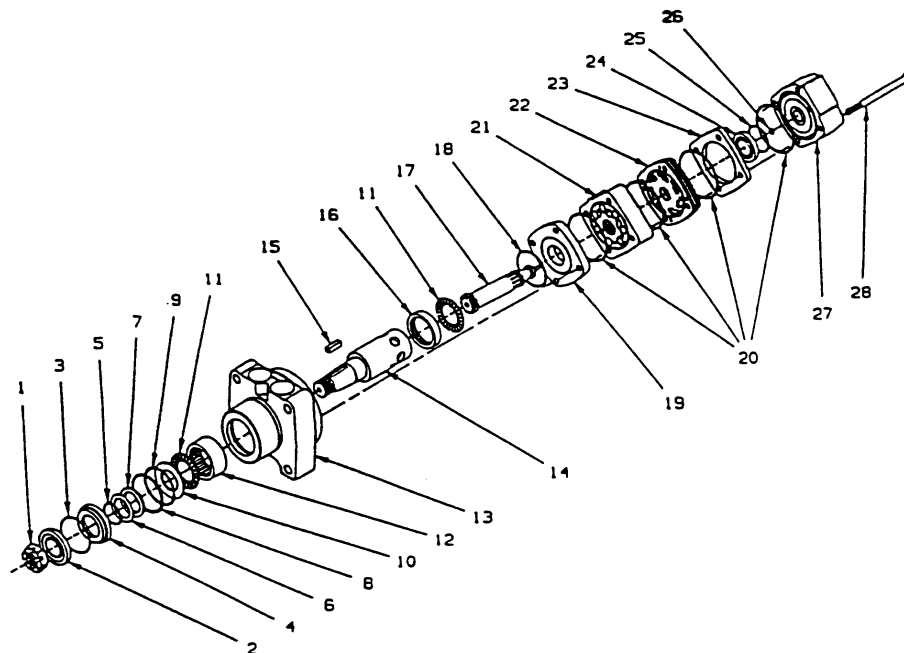
Customer Service Bulletin Commercial Business Group

Topdresser 2300

Model/Serial Range: **Model Number:** **Serial Numbers:**
 44501 00000-99999

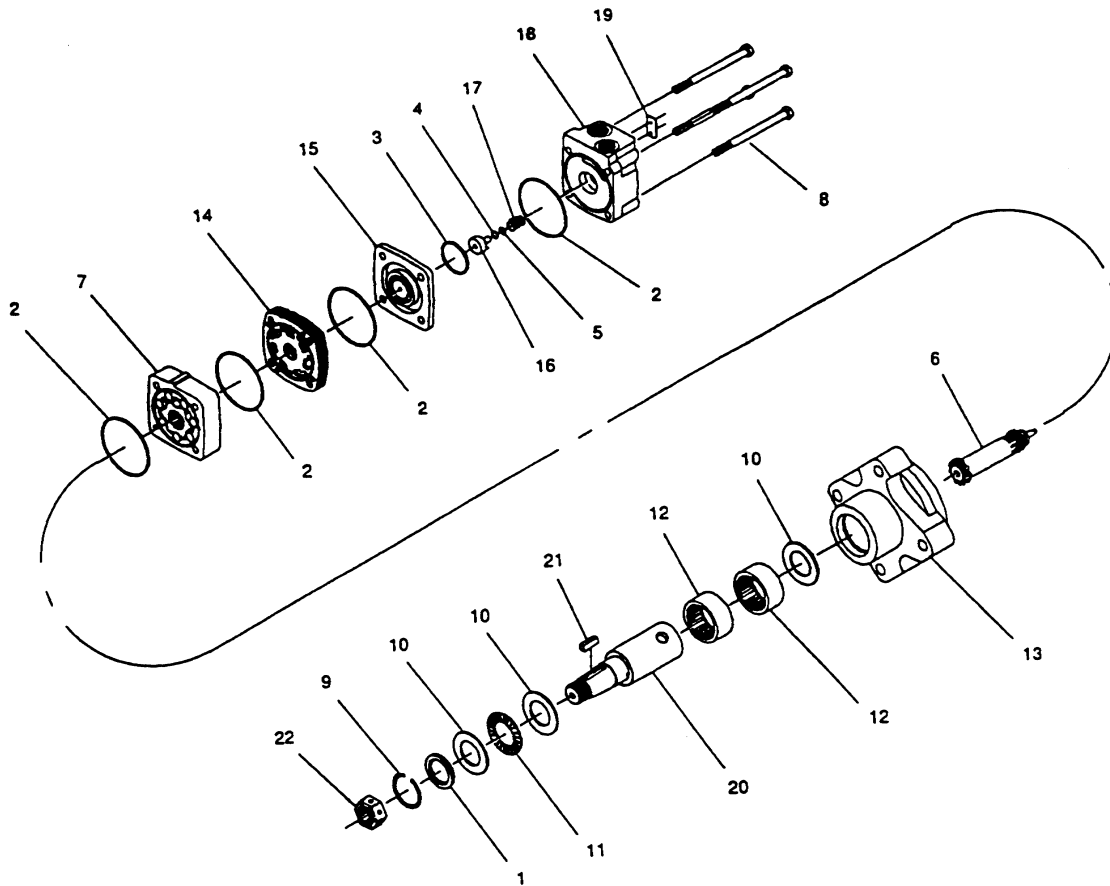
Subject: **Wheel Motor Parts List.**

If service to the wheel motor is required, identify the type of motor involved before ordering parts. The only visual difference between motors is the nut to attach the wheel hub. Motor (01-304-0510) has a Slotted Nut while Motor (01-304-0990) has a Pack Nut. The attached parts pages should be used to help determine the correct internal repair parts for either motor.



HYDRAULIC MOTOR NO. 01-304-0510

Ref. No.	Part No.	Description	No. Used	Ref. No.	Part No.	Description	No. Used
1.		Slotted Nut	1	21.	01-304-0780	Rotor Set	1
2.		Seal - Dust	1	22.	01-304-0730	Manifold	1
3.		Ring - Snap	1	23.		Commutator Plate	1
4.		Seal - Carrier	1	24.		Commutator	1
5.		Shim - Backup	1	25.		Seal - Commutator	1
6.		Seal - Backup	1	26.		Seal	1
7.		Seal - Shaft	1	27.	01-304-0750	End Cover	1
8.		Shim - Backup	1	28.	01-304-0790	Bolt Set	1
9.		Seal - Housing, High Press.	1	*	01-304-0900	Shaft Kit (Incl. Ref. #1, 14, 15)	1
10.		Thrust Washer	1	*	01-304-0560	Seal Kit (Incl. Ref. #2, 3, 5-9, 18, 20, 25, 26)	1
11.	01-304-0660	Thrust Bearing	2	*	01-304-0670	Seal Kit (Incl. Ref. #4, 10)	1
12.		Roller Bearing	1	*	01-304-0690	Housing/Bearing Kit (Incl. Ref. #12, 13, 16)	1
13.		Housing	1	*	01-304-0740	Commutator Set (Incl. Ref. #23, 24)	1
14.		Shaft	1				
15.		Key - Shaft	1				
16.		Roller Bearing	1				
17.	01-304-0770	Drive Link	1				
18.		Seal	1				
19.	01-304-0710	Divider Plate	1				
20.		Seal - Body	4				



HYDRAULIC MOTOR - NO. 01-304-0990

Ref. No.	Part No.	Description	No. Used
1		Shaft Seal	1
2		Body Seal	4
3		Commutator	1
4		Teflon Backup Seal	1
5		O-Ring Seal	1
*	01-304-1000	Seal Kit (Incl. #1 - 5)	1
6	01-304-1150	Drive Link	1
7	01-304-1160	Rotor Set	1
8	01-304-1170	Bolt Set (4)	1
9	01-304-1040	Snap Ring	1
10	01-304-1050	Thrust Washer	3
11	01-304-1060	Thrust Bearing	1
12	01-304-1070	Needle Bearing	2
13		Housing	1

Ref. No.	Part No.	Description	No. Used
*	01-304-1080	Housing Bearing Kit (Incl. #10,12,13)	1
14	01-304-1090	Manifold	1
15	01-304-1100	Commutator Assembly	1
16	01-304-1110	Endcover Piston	1
17	01-304-1120	Piston Spring	1
18		Endcover	1
*	01-304-1130	Endcover Kit (Incl. #2,4,5,16,17,18)	1
19		I.D. Tag Assembly	1
20		Shaft	1
21		Shaft Key	1
22		Pack Nut	1
*	01-304-1180	Shaft Kit (Incl. #20 - 22)	1