



Count on it.

Parts Catalog

Hand Spray Wand Kit

**2015 and After Multi Pro® 1750, Multi Pro®
WM or Multi Pro® 5800 Turf Sprayer**

Model No. 41118—Serial No. 415300000 and Up



Ordering Replacement Parts

To order replacement parts, please supply the part number, the quantity, and the description of each part desired.

Understanding Reference Numbers

Each identified part in an illustration has a reference number. The reference number for a part also appears in the parts list, along with other information about the part.

This catalog uses two special reference number formats, one to indicate parts in a service assembly and another to indicate the quantity of a given part in an illustration.

Service Assembly Reference Numbers

Parts in service assemblies have reference numbers in the form a:b. The a represents the reference number of the entire service assembly and the b represents a sequential number unique to each part within the service assembly.

For example, a wheel assembly might be identified by reference number 6, the tire by 6:1, the valve by 6:2, and the wheel by 6:3. When you order the assembly identified by reference number 6, you receive all parts identified by reference numbers 6:1, 6:2, and 6:3. However, you may also order any part individually. Reference numbers of this type appear in illustration and in parts lists.

Reference Numbers Indicating Quantity

In an illustration, if a reference number indicates more than one part, the reference number has the form nX y. The n represents the quantity of the part, the X is the multiplication symbol, and the y represents the reference number.

For example, in an illustration, the reference number 2X 37 means that two of the parts identified by reference number 37 are indicated.

Contents

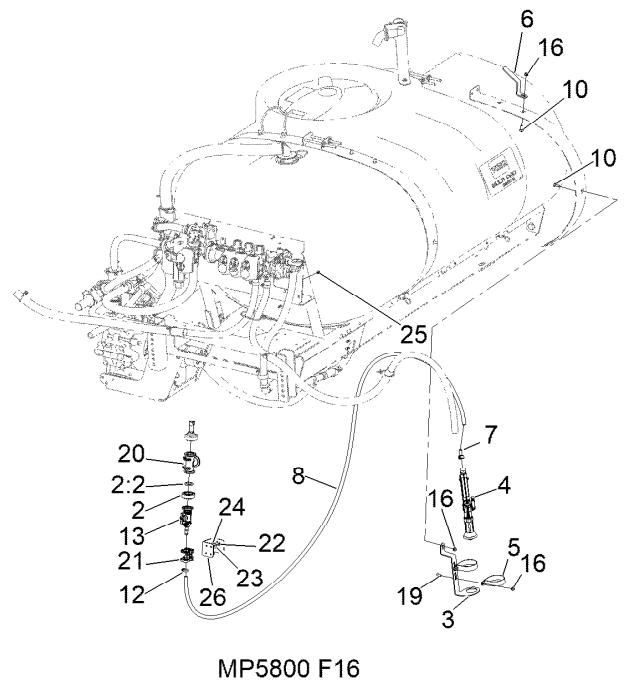
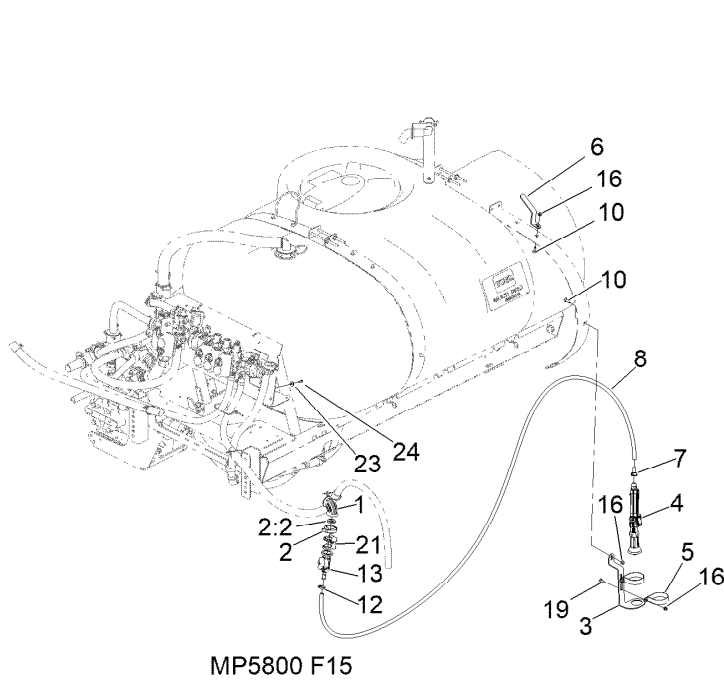
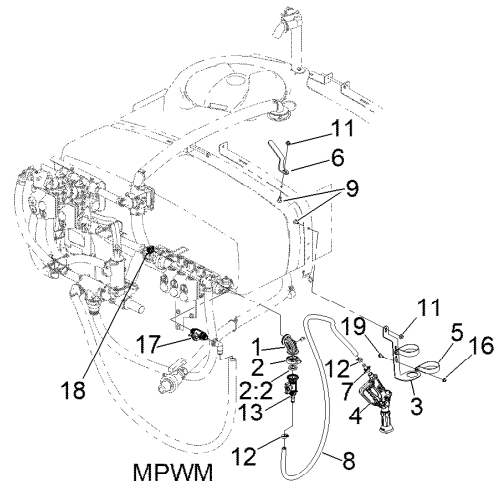
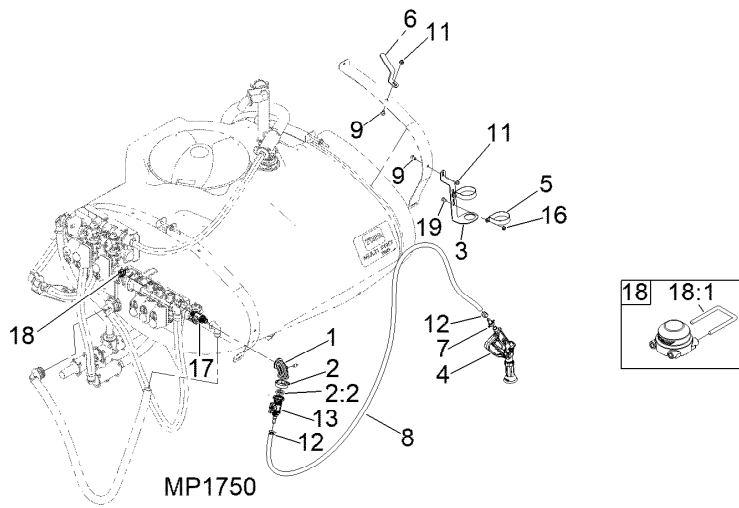
Hand Spray Wand Kit Assembly 4

Spray Wand Assembly N0. 161-4158..... 6

Hand Gun Valve Assembly No. 131-0260 7

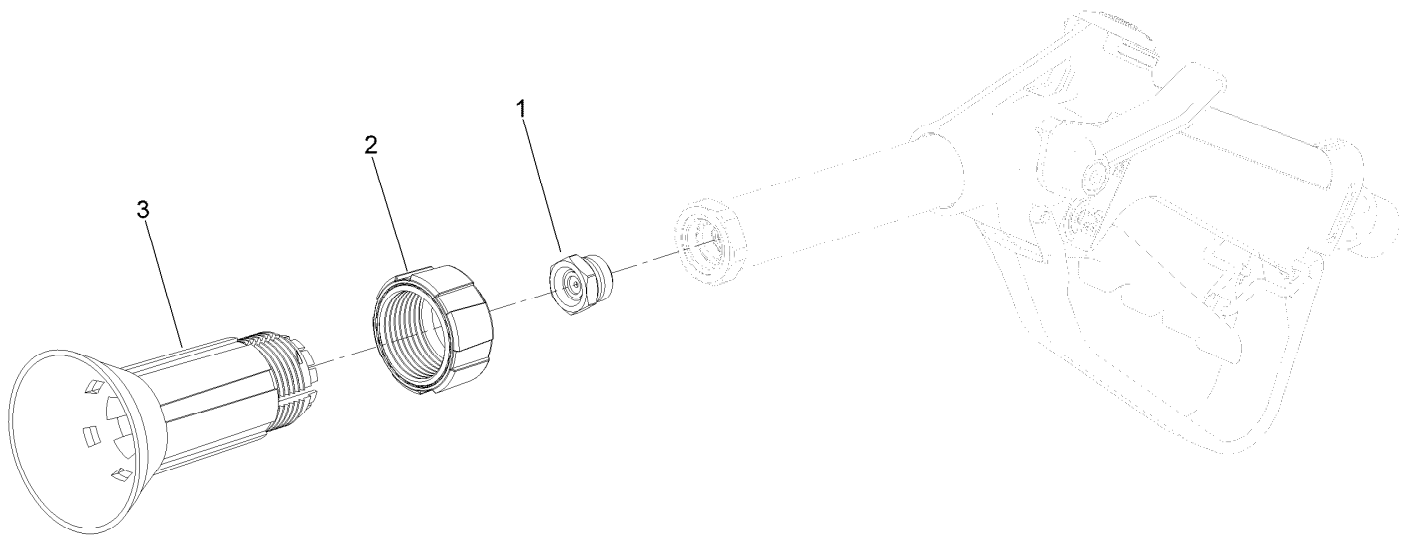
Shutoff Bypass Valve Assembly No. 131-5838 8

Hand Spray Wand Kit Assembly



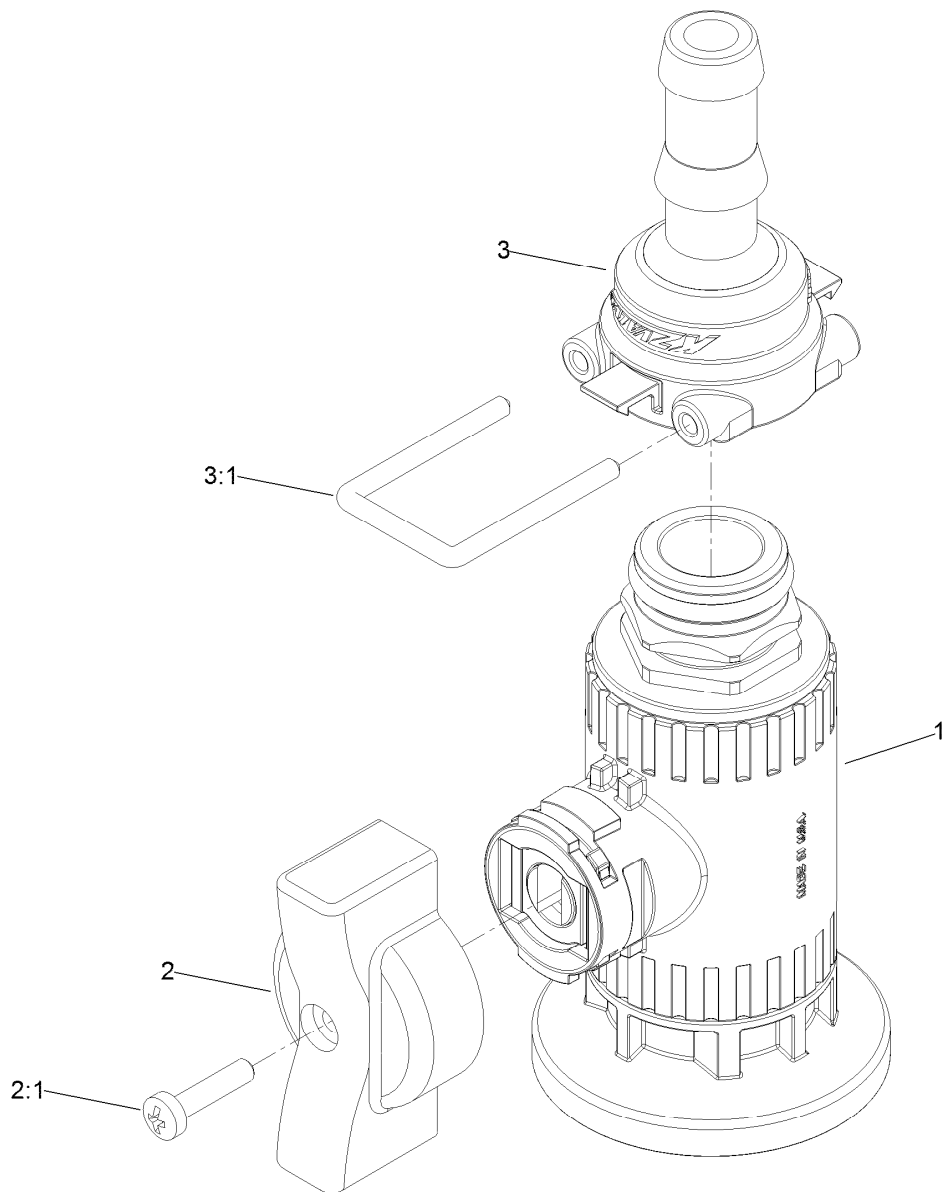
Hand Spray Wand Kit Assembly (continued)

<i>Ref.</i>	<i>Part Number</i>	<i>Qty.</i>	<i>Description</i>	<i>Ref.</i>	<i>Part Number</i>	<i>Qty.</i>	<i>Description</i>
1	131-3726	1	Fitting-Elbow, 90 DEG	13	131-0260	1	Hand Gun Valve ASM
2	127-9829	1	Clamp/Gasket Kit	16	104-8300	4	Nut-HF, NI
2:2	127-1145	1	Gasket-Flange	17	131-5838	1	Shutoff Bypass Valve ASM
3	161-4159-03	1	Bracket-Hand Spray Gun	18	127-9811	1	Fitting-Cap, Female
4	161-4158	1	Spray Wand, DIA 2.2 MM Nozzle	18:1	133-0398	1	Pin-Fork
5	120-8592	2	Clamp-R	19	3230-23	2	Bolt-CARR
6	40153-03	1	Hook-Hose	20	127-9834	1	Fitting-Tee
7	121-4982	1	Hosebarb-Spray Gun	21	132-4302	1	Mount-Valve
8	107-8751	1	Hose-Spray Gun	22	33113-012	4	Screw-HH
9	3231-21	2	Screw-CARR	23	88-7200	4	Washer-Flat
10	3230-2	2	Bolt-CARR	24	33113-016	4	Screw-HH
11	104-8301	2	Nut-HF, NI	25	33003-00	4	Nut-HF
12	2412-36	2	Clamp-Hose	26	133-0372-03	1	Mount-Bracket, Reel



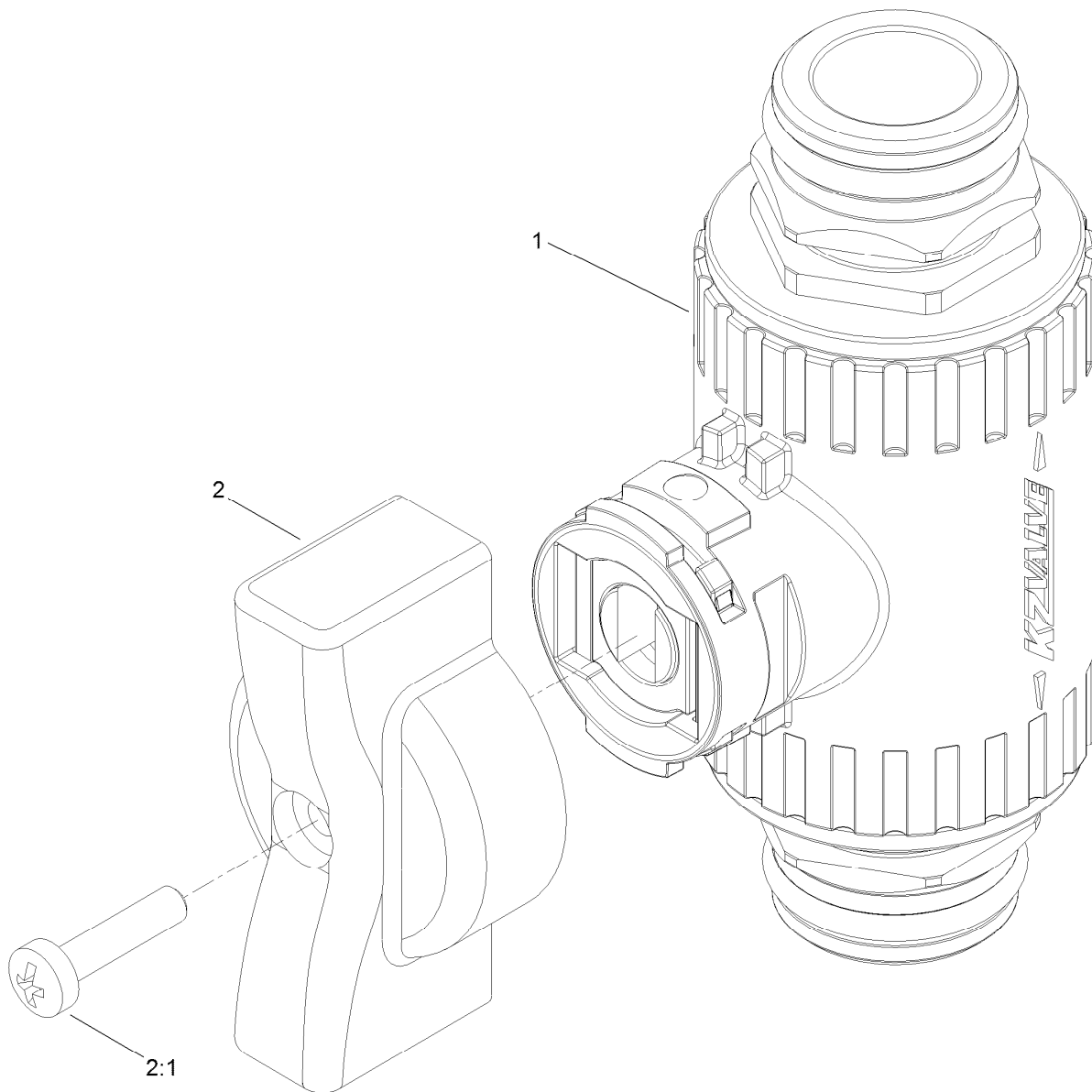
Spray Wand Assembly N0. 161-4158

<i>Ref.</i>	<i>Part Number</i>	<i>Qty.</i>	<i>Description</i>
1	161-4162	1	Nozzle Head
2	161-4164	1	Diffuser Ring Nut
3	161-4163	1	Diffuser



Hand Gun Valve Assembly No. 131-0260

Ref.	Part Number	Qty.	Description
1	131-0250	1	2-Way Valve On/Off Kit
2	131-0268	1	Hose Reel Handle Kit
2:1	131-0263	1	Screw-Handle
3	139-3088	1	Kit-Fitting, Qc 1/2" STR Barb
3:1	133-0398	1	Pin-Fork



Shutoff Bypass Valve Assembly No. 131-5838

<i>Ref.</i>	<i>Part Number</i>	<i>Qty.</i>	<i>Description</i>
1	131-0249	1	On/Off 2-Way Valve Kit
2	131-0267	1	Bypass Handle Kit
2:1	131-0263	1	Screw-Handle

Notes:

Notes:

Notes:



Count on it.