



Customer Service Bulletin Commercial Business Group

Multi Pro® 5500

April 29, 2002

<u>Model/Serial Range:</u>	<u>Model Number:</u>	<u>Serial Numbers:</u>
	41564	60101 - 210000281

Subject: Heat Related Turf Damage from a Stationary Vehicle

The heat from exhaust systems may stress the turf when the vehicle is stationary (engine running) for an extended period of time. This most often occurs when walk or hand spraying is required using optional accessories.

Reducing the engine speed (while the vehicle is stationary) to the lowest RPM possible while maintaining desired spray pressure should significantly reduce engine temperature and related turf heat stress.

An optional Extended Tailpipe Kit (106-1994) is also available for purchase to reduce heat related turf stress. The Kit contains a replacement tailpipe to redirect exhaust flow and heat shields to protect vehicle components. Installation instructions are included with each Kit.

Contact your local authorized Toro distributor if assistance is required.



Extended Tailpipe Kit

Multi Pro[®] 5500
Part No. 106-1994

Form No. 3328-136

Installation Instructions



Caution



If you leave the key in the ignition switch, someone could accidentally start the engine and seriously injure you or other bystanders.

Remove the key from the ignition and disconnect the wire(s) from the spark plug(s) before you do any maintenance. Set the wire(s) aside so that it does not accidentally contact the spark plug(s).

Important Always run engine at lowest RPM to reach desired spraying pressure.

Loose Parts

Description	Qty.
Tailpipe Shield (short)	1
Tailpipe	1
Muffler Clamp	7
Tailpipe Hanger	1
Capscrew	1
Special Washer	1
Locknut	1
Flatwasher	1
Tailpipe Lug	1
Tailpipe Shield (long)	1
Hose-Shield	1
Sta-Strap	2

1. Remove the two tailpipe muffler clamps at rear of muffler.
2. Remove the short angled tailpipe from muffler.
3. Install new extended tailpipe to end of muffler. Secure with two muffler clamps. Support with the existing tailpipe hanger and clamp (Fig. 1).

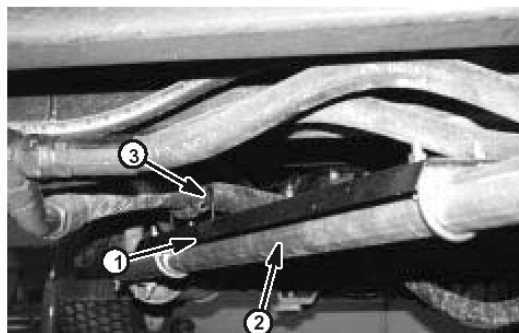


Figure 1

1. Tailpipe shield assembly (long)
2. Extended tailpipe
3. Wire support w/hose shield

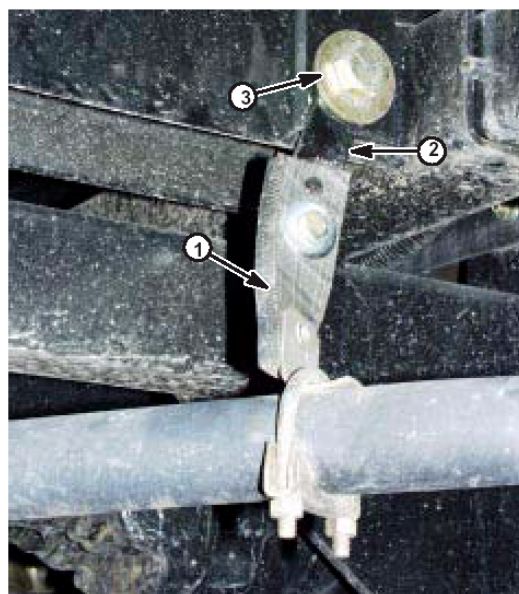


Figure 2

1. Tailpipe hanger strap
2. Tailpipe lug
3. Tank saddle bolt

© 2002 by The Toro Company
8111 Lyndale Avenue South
Bloomington, MN 55420-1196

4. Using the right rear bolt securing tank saddle to vehicle (Fig. 2), install tailpipe lug and new tailpipe hanger strap. Use the 5/16" bolt and special washer (against the rubber strap's second hole), and flat washer and locknut against the tailpipe lug (Fig. 2).
5. Install clamp and support the extended tailpipe with hanger strap. Secure with a muffler clamp (Fig. 2).
6. Install hose shield on wire support on top of long tailpipe shield. Secure with Sta-straps (Fig. 2).
7. Install the long tailpipe shield assembly under tank and beneath hydraulic hoses for the rear wheel motors (Fig. 1). Secure with two muffler clamps.

Note: Tailpipe shield assembly is to protect hoses from heat.

8. Install short tailpipe shield at rear of the tailpipe to protect strainer and supply hoses. Secure with two muffler clamps (Fig. 3).

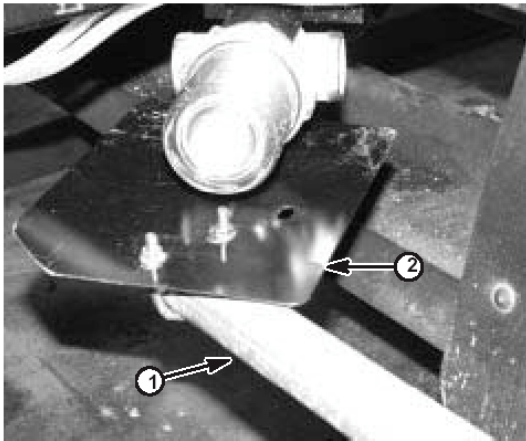


Figure 3

- | | |
|----------------------|----------------------------|
| 1. Extended tailpipe | 2. Tailpipe shield (short) |
|----------------------|----------------------------|