



Hitch Rework Kit

Z Master® 4000 Series Riding Mower

Model No. 161-6795

Installation Instructions

Store this document with the *Operator's Manual* for the machine.

Note: The current hitch decal does not inform the user that they need to install a front weight kit to operate the machine while using the hitch. This may not be outlined in the current operator's manual.

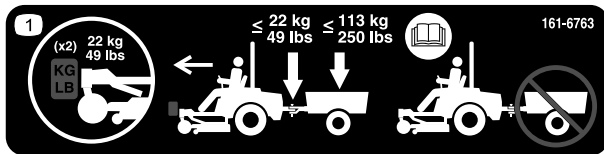
For any further questions, please contact your Authorized Toro Service Dealer or Authorized Toro Distributor.

Safety

Safety and Instructional Decals



Safety decals and instructions are easily visible to the operator and are located near any area of potential danger. Replace any decal that is damaged or missing.



decal161-6763

161-6763

1. Install a caster weight 22 kg (49 lb) to each caster wheel at the front of the machine; do not exceed a tongue weight of 22 kg (49 lb); do not exceed a gross towing weight of 113 kg (250 lb); read the *Operator's Manual*; do not tow without the front weights installed.

Loose Parts

Use the chart below to verify that all parts have been shipped.

Procedure	Description	Qty.	Use
1	Decal 161-6763	1	Install the decal.
	Addendum 3466-241	1	



1

Install the New Decal

Parts needed for this procedure:

1	Decal 161-6763
1	Addendum 3466-241

Procedure

1. Install decal 161-6763 over decal 147-7364.

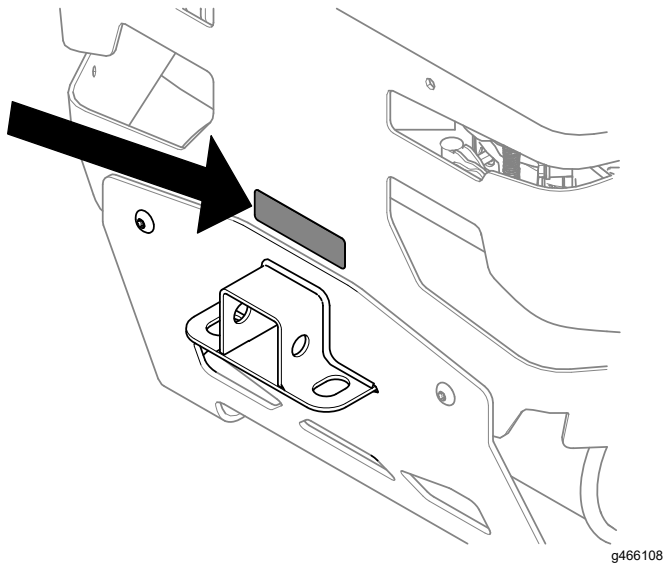


Figure 1