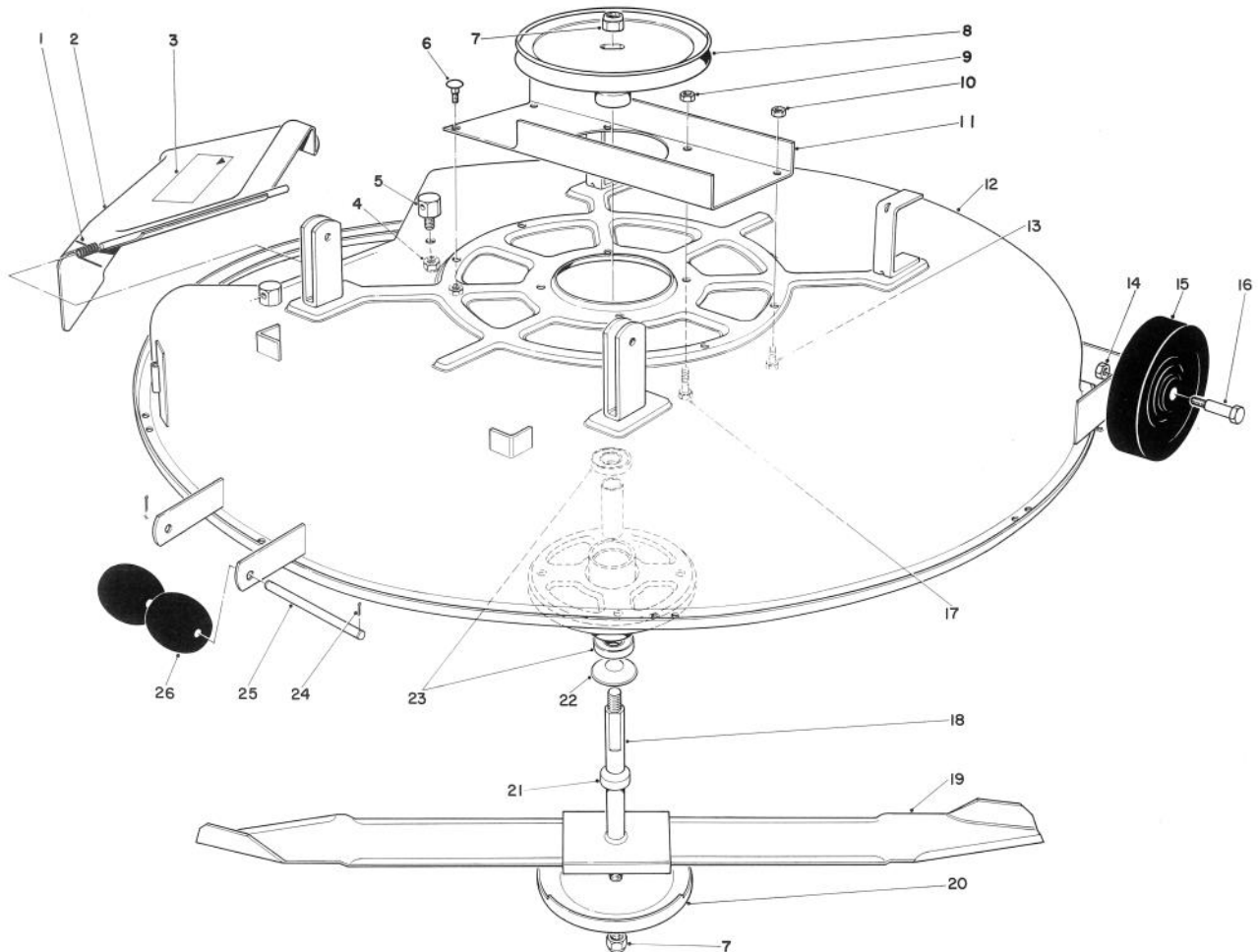




MODEL NO. 59130-1000001 & UP

**PARTS
CATALOG**
32" CUTTING DECK


Ref. No.	Part No.	Description	No. Used
1	28-8010	Spring	1
2	28-8190	Deflector Assembly (Incl. Ref. #3)	1
3	12-2890	Decal — Deflector Caution	1
4	32153-2	Stop Nut	1
5	28-7350	Pivot Post — Deflector	1
6	3229-11	Carriage Bolt	1
7	17-0980	Special Nut	2
8	28-8000	Pulley — Blade Drive	1
9	32152-1	Locknut	4
10	32153-4	Locknut	4
11	36-1290	Channel Reinforcement	1
12	39-5790	Cutter Deck	1
13	321-3	Capscrew	3

Ref. No.	Part No.	Description	No. Used
14	32146-6	Stop Nut	2
15	29-6010	Wheel	2
16	3-2652	Shoulder Bolt	2
17	322-5	Capscrew	4
18	28-4280	Spindle Assembly (Incl. Ref. #21-23)	1
19	33-4750	Blade	1
20	7-3522	Anti Scalp Cup	1
21	38-3180	Spacer	1
22	38-0470	Dust Cover	1
23	37-0200	Bearing	2
24	3272-11	Cotter Pin	2
25	7-0277	Shaft Roller	1
26	29-4820	Roller	2

IDENTIFICATION AND ORDERING

MODEL AND SERIAL NUMBERS

The 32" Cutting Deck has two identification numbers: a model number and a serial number. The two numbers are stamped on a decal which is located on the left top side of Cutter Deck. In any correspondence concerning the 32" Cutting Deck, supply model and serial numbers to assure that correct information and replacement parts are obtained.

To order replacement parts from an Authorized TORO Service Dealer, supply the following information:

1. Model and serial numbers of the mower.
2. Part number, description, and quantity of part(s) desired.

Note: Do not order by reference number if a parts catalog is being used; use the PART NUMBER.

The Toro Promise

A ONE YEAR LIMITED WARRANTY

The Toro Company promises to repair your TORO Product if defective in materials or workmanship. The following time periods from the date of purchase apply:

Residential Product	1 Year
Residential Products Used Commercially	45 Days

The costs of parts and labor are included, but the customer pays the transportation costs. Just return any residential product to an Authorized TORO Service Dealer or TORO Distributor.

Should you feel your TORO Product is defective and wish to rely on The Toro Promise, the following procedure is recommended:

1. Contact any Authorized TORO Service Dealer, TORO Master Service Dealer, or TORO Distributor (the Yellow Pages of your telephone directory is a good reference source).
2. He will either instruct you to return the product to him or recommend another Authorized TORO Service outlet which might be more convenient.
3. Bring the product along with your original sales slip, or other evidence of purchase date, to the service dealer.
4. The servicing dealer will inspect the unit, advise you whether the product is defective and, if so, make all repairs necessary to correct the defect without extra charge to you.

If for any reason you are dissatisfied with the dealer's analysis of the defect or the service performed, you may contact us.

Write:
TORO Consumer Service Department
8111 Lyndale Avenue South
Minneapolis, Minnesota 55420

The above remedy of product defects through repair by an Authorized TORO Service Dealer is the purchaser's sole remedy for any defect.

THERE IS NO OTHER EXPRESS WARRANTY. ALL IMPLIED WARRANTIES OF MERCHANTABILITY AND

FITNESS FOR USE ARE LIMITED TO THE DURATION OF THE EXPRESS WARRANTY.

Some states do not allow limitations on how long an implied warranty lasts, so the above limitation may not apply to you.

This warranty applies only to parts or components which are defective and does not cover repairs necessary due to normal wear, misuse, accidents, or lack of proper maintenance. Regular, routine maintenance of the unit to keep it in proper operating condition is the responsibility of the owner.

All warranty repairs reimbursable under The Toro Promise must be performed by an Authorized TORO Service Dealer using Toro approved replacement parts.

Repairs or attempted repairs by anyone other than an Authorized TORO Service Account are not reimbursable under The Toro Promise. In addition, these unauthorized repair attempts may result in additional malfunctions, the correction of which is not covered by warranty.

THE TORO COMPANY IS NOT LIABLE FOR INDIRECT, INCIDENTAL OR CONSEQUENTIAL DAMAGES IN CONNECTION WITH THE USE OF THE PRODUCT INCLUDING ANY COST OR EXPENSE OF PROVIDING SUBSTITUTE EQUIPMENT OR SERVICE DURING PERIODS OF MALFUNCTION OR NON-USE.

Some states do not allow the exclusion or limitation of incidental or consequential damages, so the above limitation or exclusion may not apply to you.

This warranty gives you specific legal rights, and you may also have other rights which vary from state to state.

COUNTRIES OTHER THAN THE UNITED STATES OR CANADA

Customers who have purchased TORO products exported from the United States or Canada should contact their TORO Distributor (Dealer) to obtain guarantee policies for your country, province or state. If for any reason you are dissatisfied with your Distributor's service or have difficulty obtaining guarantee information, contact

the TORO importer. If all other remedies fail, you may contact us at The Toro Company.

International Group
Service Department
One Corporate Center
7401 Metro Boulevard
Minneapolis, Minnesota 55435 U.S.A.