



# Electric Bed Lift Kit

## Workman® MDX Lithium Utility Vehicle

Model No. 08389

### Installation Instructions

# Installation

## Loose Parts

Use the chart below to verify that all parts have been shipped.

Procedure	Description	Qty.	Use
<b>1</b>	No parts required	—	Prepare the machine.
<b>2</b>	Outboard-lift bracket (short flanges)	1	Install the bed bracket.
	Inboard-lift bracket (long flanges)	1	
	Hex-head bolt (5/16 x 5-1/2 inches)	1	
	Flange nut (5/16 inch)	1	
<b>3</b>	Switch	1	Install the switch.
	Hex washer head screw (#10 x 3/4 inch)	2	
	Relay	2	
<b>4</b>	Lift actuator	1	Install the lift actuator.
	Clevis pin (3-1/2 inches)	1	
	Clevis pin (2-1/4 inches)	1	
	Hairpin	2	
	Hex-head bolt (1/2 x 5-1/2 inches)	1	
	Locknut (1/2 inch)	1	
<b>5</b>	No parts required	—	Remove the prop rod.
<b>6</b>	Foam pad	2	Install the foam pads.

**Note:** Determine the left and right sides of the machine from the normal operating position.



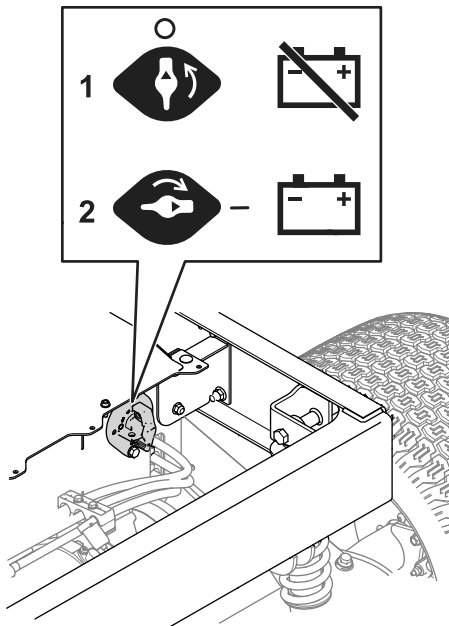
# 1

## Preparing the Machine

### No Parts Required

### Procedure

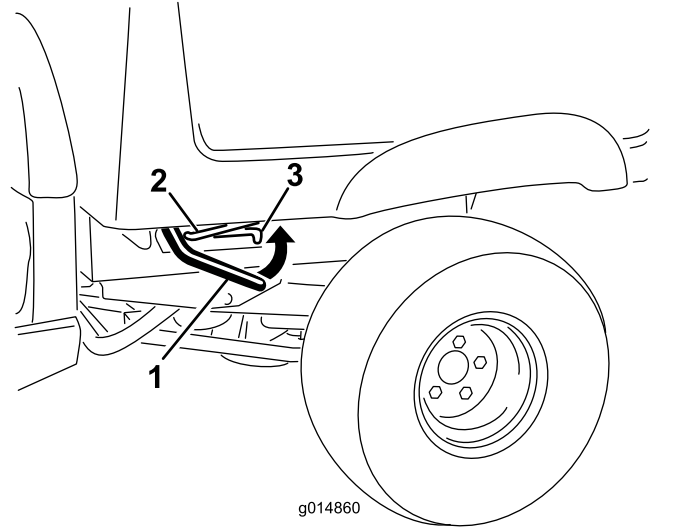
1. Park the machine on a level surface.
2. Engage the parking brake.
3. Shut off the machine and remove the key.
4. Turn the battery-disconnect switch to the OFF position ([Figure 1](#)).



**Figure 1**

1. Turn the switch to the OFF position to de-energize the machine electrically.
2. Turn the switch to the ON position to energize the machine electrically.

5. Lift the lever on either side of the cargo bed and lift the bed up ([Figure 2](#)).



**Figure 2**

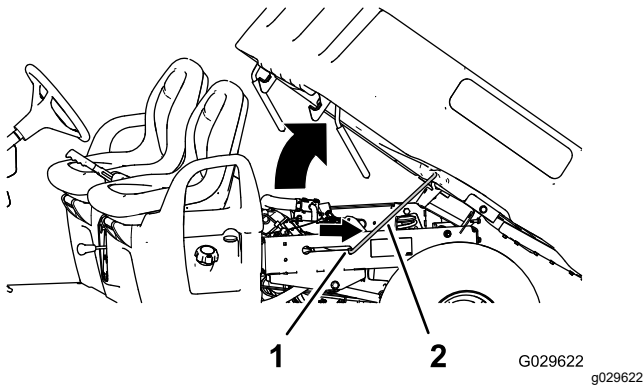
1. Lever
2. Prop rod
3. Detent slot

6. Pull the prop rod into the detent slot to secure the bed (Figure 3).

### ⚠ WARNING

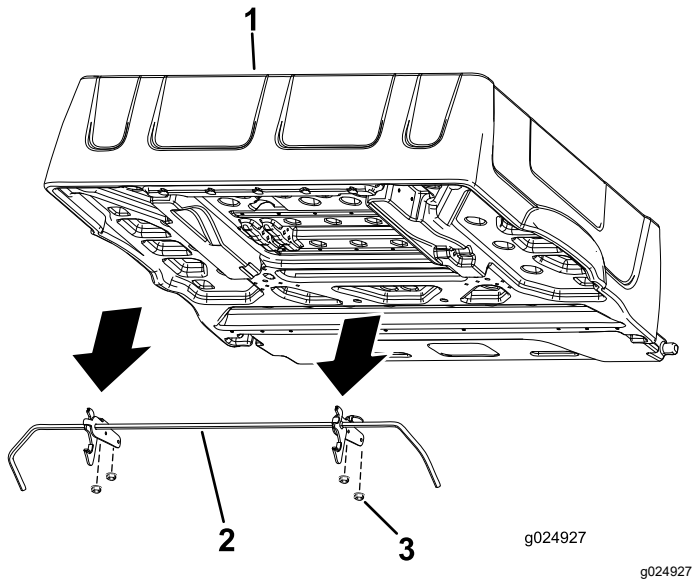
A raised bed could fall and injure persons that are working beneath it.

- Always use the prop rod to hold the bed up before working under the bed.
- Remove any load material from the bed before raising it.



1. Detent slot
2. Prop rod

7. Remove the 4 flange nuts securing the latch-rod brackets to the underside of the bed (Figure 4).



1. Bed
2. Latch rod
3. Flange nut

8. Remove and retain the latch rod and latches.

## 2

## Installing the Bed-Lift Brackets

Parts needed for this procedure:

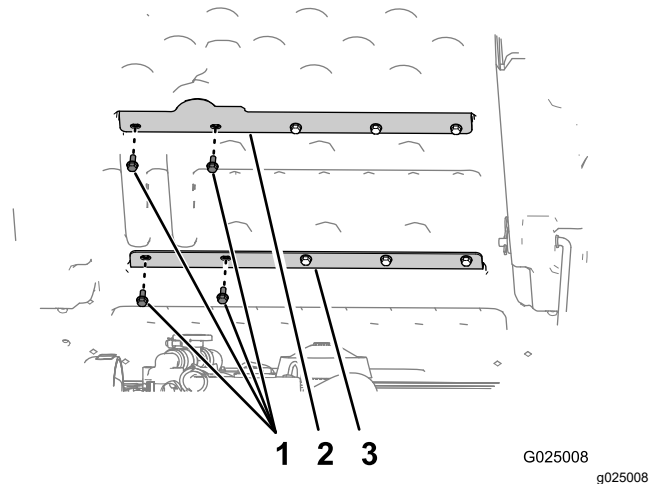
1	Outboard-lift bracket (short flanges)
1	Inboard-lift bracket (long flanges)
1	Hex-head bolt (5/16 x 5-1/2 inches)
1	Flange nut (5/16 inch)

### Procedure

Perform the bed bracket installation at the bottom side of the bed.

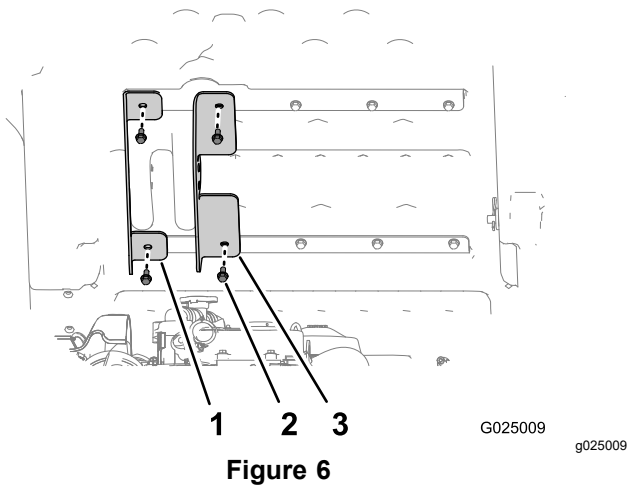
1. Remove the 2 left-most bolts (5/16 x 3/4 inch) that secure upper-bed brace to the bed (Figure 5).
2. Remove the 2 left-most bolts (5/16 x 3/4 inch) that secure lower-bed brace to the bed (Figure 5).

**Note:** Retain the 4 bolts for installation.



1. Bolts (5/16 x 3/4 inch)
2. Upper-bed brace
3. Lower-bed brace

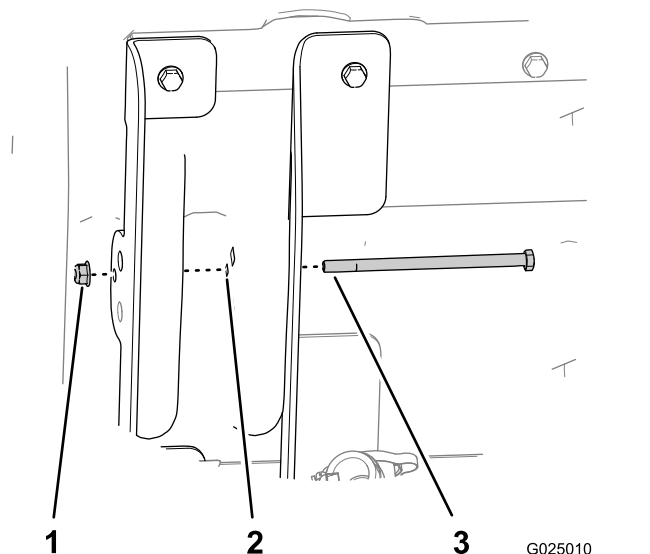
3. Align the left outboard-lift bracket (the bracket with the short flanges) to the outboard holes in the upper- and lower-bed braces (**Figure 6**).
4. Secure the outboard lift bracket to the bed using the 2 bolts that you removed in step 1, and hand-tighten the bolts (**Figure 6**).
5. Align the inboard-lift bracket (the bracket with the long flanges) to the inboard holes in the upper- and lower-bed braces (**Figure 6**).
6. Secure the inboard-lift bracket to the bed with the 2 bolts that you removed in step 2, and hand-tighten the bolts (**Figure 6**).



**Figure 6**

1. Outboard-lift bracket (short flanges)
2. Bolts (5/16 x 3/4 inch)
3. Inboard-lift bracket (long flanges)

7. Insert the hex-head bolt (5/16 x 5-1/2 inches) through the hole (8 mm or 5/16 inch) in the inboard-lift bracket (long flanges), bed structure, and the outboard bed-lift bracket (short flanges) as shown in **Figure 7**.
8. Secure the bolt with the flange nut (5/16 inch) hand-tight (**Figure 7**).



**Figure 7**

1. Locknut (5/16 inch)
2. Hole (8 mm or 5/16 inch)
3. Hex-head bolt (5/16 x 5-1/2 inches)

# 3

## Installing the Switch

Parts needed for this procedure:

1	Switch
2	Hex washer head screw (#10 x 3/4 inch)
2	Relay

### Procedure

1. Cut out the opening in the dashboard decal for the switch.
2. Install the switch connector through the opening in the dashboard.
3. Route the switch to the switch connector.
4. Ensure that the switch is oriented properly and install the switch into the dash.

**Note:** The switch should snap and lock into position.

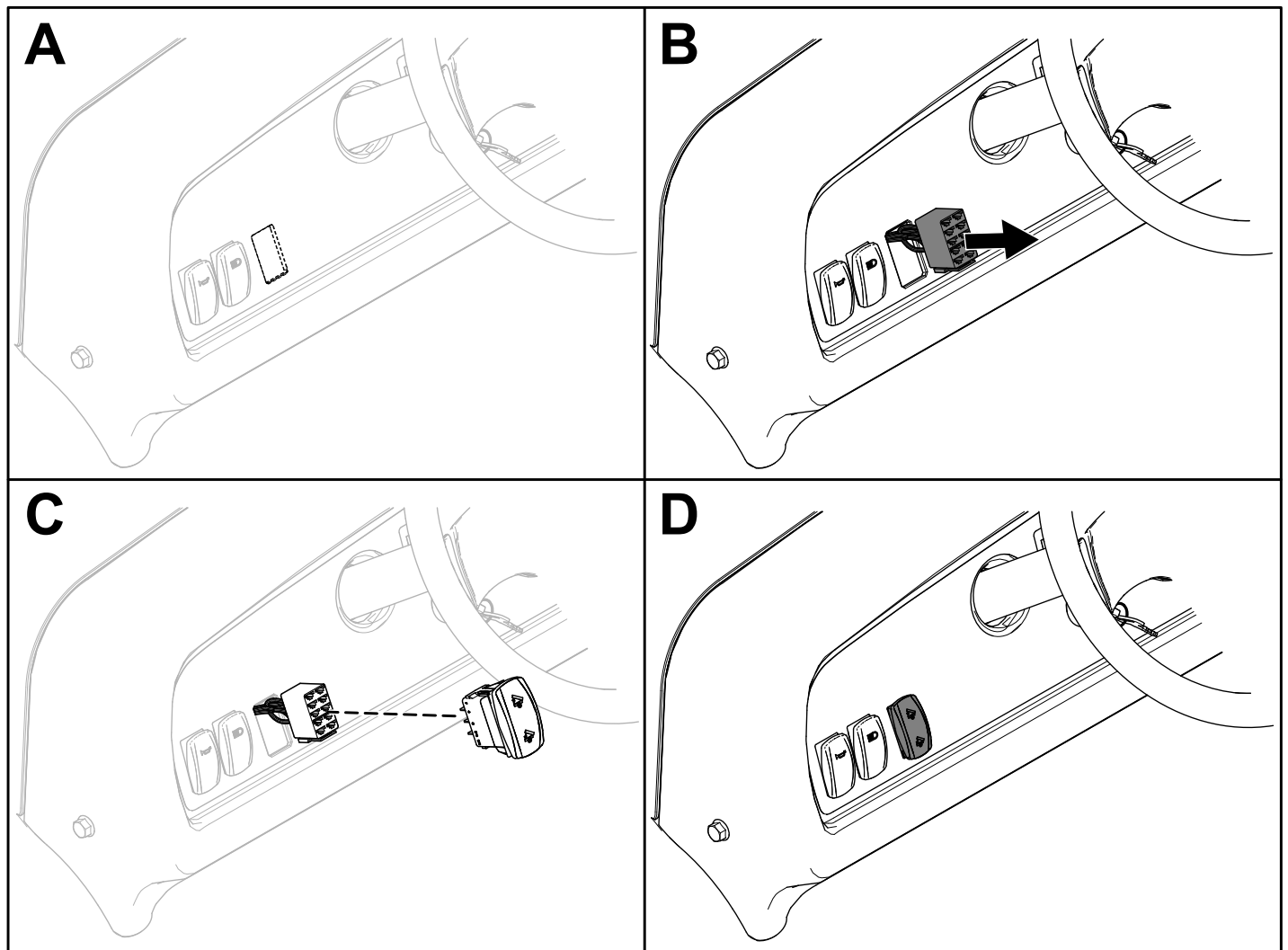
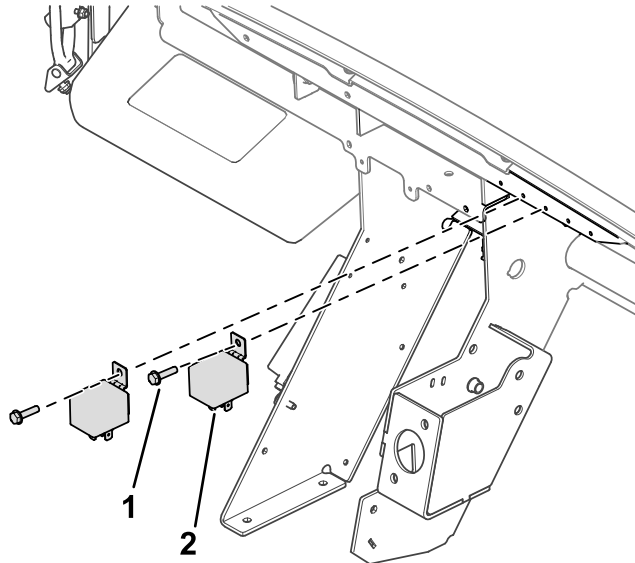


Figure 8

g446623

- Secure the relays to the back of the dash with 2 hex washer head screws (#10 x 3/4 inch).



**Figure 9**

g465068

- Hex washer head screw (#10 x 3/4 inch)

- Relay

# 4

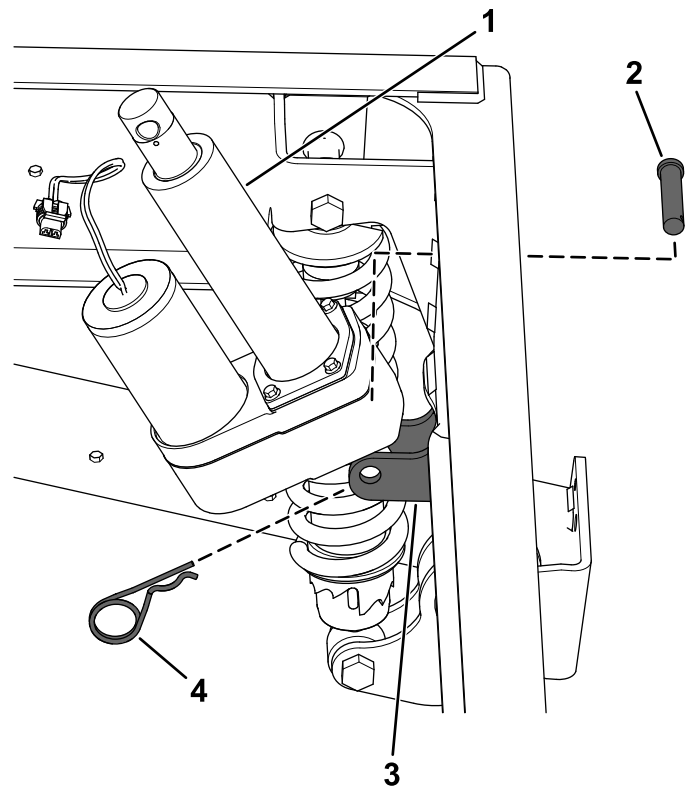
## Installing the Lift Actuator

### Parts needed for this procedure:

1	Lift actuator
1	Clevis pin (3-1/2 inches)
1	Clevis pin (2-1/4 inches)
2	Hairpin
1	Hex-head bolt (1/2 x 5-1/2 inches)
1	Locknut (1/2 inch)

### Procedure

- Align the hole in the lower-mount point for the lift actuator with the holes in the chassis-mount brackets (Figure 10).
- Secure the lift actuator to the chassis-mount brackets with the clevis pin (2-1/4 inches) and hairpin (Figure 10).



**Figure 10**

g446672

- Lift actuator
- Clevis pin (2-1/4 inches)
- Chassis-mount brackets
- Hairpin

3. Connect the 2-socket electrical connector of the rear wire harness of the machine to the 2-pin connector of the lift actuator (Figure 11).

**Note:** The 2-socket electrical connector of the rear wire harness is located on the back of the battery box, above the battery-disconnect switch.

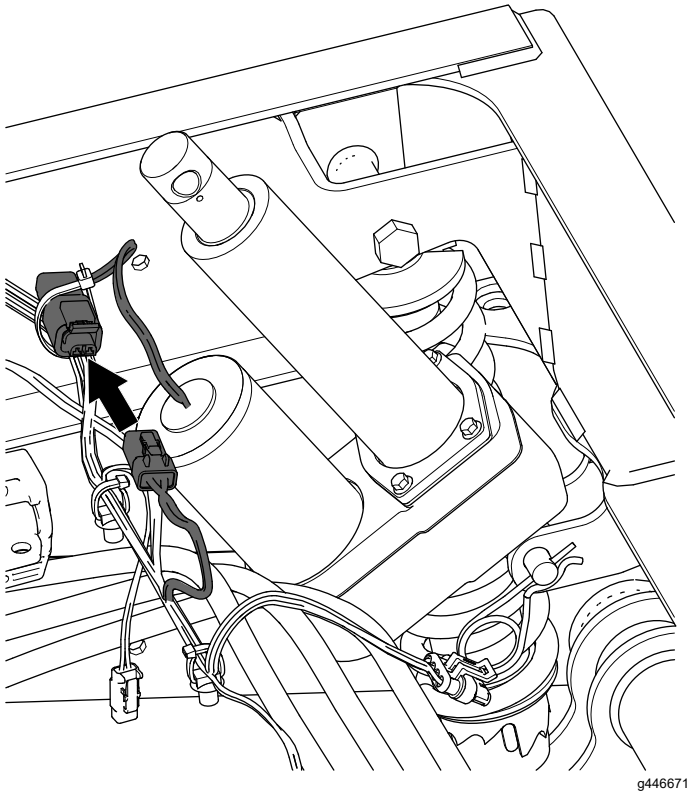


Figure 11

4. Turn the battery-disconnect switch to the ON position (Figure 1).
5. Press the bed-lift switch up to extend the actuator (Figure 8).

6. Press the up paddle on the bed-lift switch to extend the lift-actuator rod until the hole in the rod is aligned with the holes in the inboard and outboard-lift brackets (Figure 12).

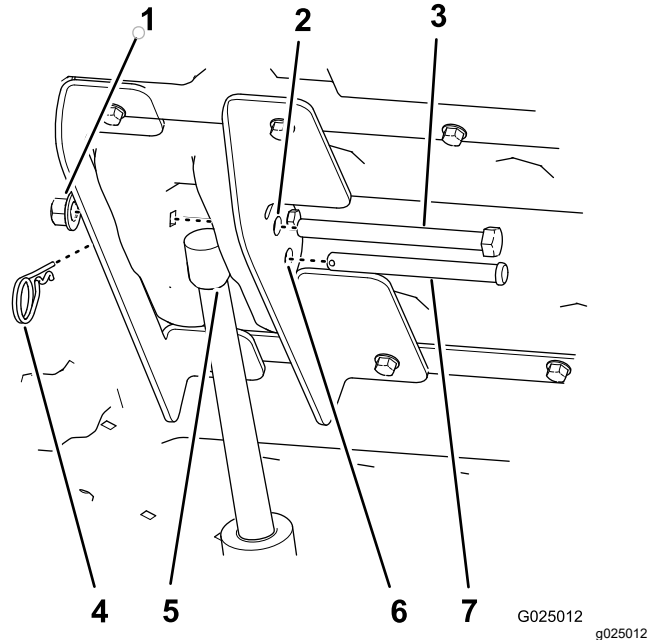


Figure 12

- |  |   |
|--|---|
| 1. Locknut (1/2 inch)                            | 5. Lift-actuator rod                          |
| 2. 12.7 mm (1/2 inch) hole for the hex-head bolt | 6. 12.7 mm (1/2 inch) hole for the clevis pin |
| 3. Hex-head bolt (1/2 x 5-1/2 inches)            | 7. Clevis pin (3-1/2 inches)                  |
| 4. Hairpin                                       |   |

7. Secure the lift-actuator rod to the lift brackets with the clevis pin (3-1/2 inches) and hairpin (Figure 12).
8. Tighten the 4 bolts (5/16 x 3/4 inch) that secure the inboard and outboard-lift brackets to the bed (Figure 6) to 15 to 16.6 N·m (133 to 147 in-lb).
9. Align the hex-head bolt (1/2 x 5-1/2 inches) through the remaining 12.7 mm (1/2 inch) holes in the inboard and outboard-lift brackets (Figure 12) and secure it with a locknut (1/2 inch) until the nut is snug.
10. Tighten the flange nut that secures the bolt (5/16 inch) until it is snug (Figure 7).

# 5

## Removing the Prop Rod

No Parts Required

### Procedure

#### ⚠ WARNING

A raised bed could fall and injure persons that are working beneath it.

- Always use the prop rod to hold the bed up before working under the bed.
  - Remove any load material from the bed before raising it.
1. Remove the hairpin and washer that secure the prop rod to the bottom of the bed (Figure 13).
  2. Slide the prop rod forward to remove it from the bracket on the frame (Figure 13).

**Note:** Retain the prop rod components for future use.

**Note:** If the electric box lift is ever removed, install the prop rod and latch rod again, using the existing fasteners and the prop-rod bracket.

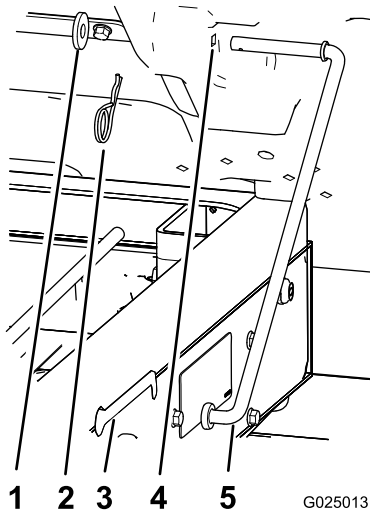


Figure 13

- |                 |             |
|-----------------|-------------|
| 1. Washer       | 4. Bed hole |
| 2. Hairpin      | 5. Prop rod |
| 3. Slot (frame) |             |



# 6

## Installing the Foam Pads

### Parts needed for this procedure:

2	Foam pad
---	----------

### Procedure

1. Clean the 2 areas of the frame (Figure 14) so that the adhesive on the foam pads adhere properly to the frame.

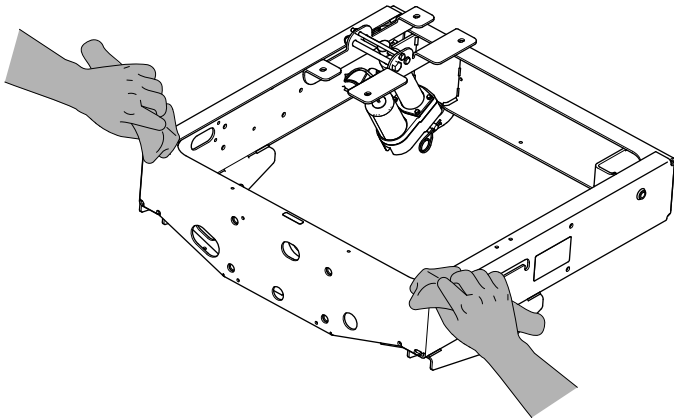


Figure 14

g468283

2. Remove the backing from the foam pads and adhere them as shown in Figure 15.

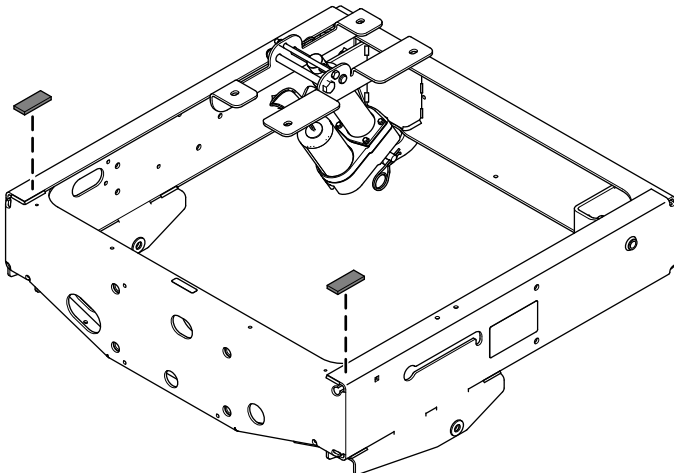


Figure 15

g468281

3. Fully lower the cargo bed and ensure that the cargo bed makes contact with the foam pads.
4. If the cargo bed does not make contact with the foam pads in both locations, loosen the 4 cargo bed hinge bolts (Figure 16).

Once the cargo bed makes contact with the foam pads, torque the 4 cargo bed hinge bolts to 37 to 44 N·m (27 to 33 ft-lb).

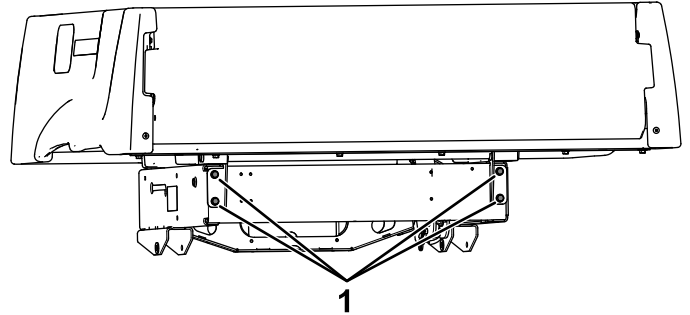


Figure 16

g468282

1. Hinge bolts

# Operation

## **⚠ WARNING**

Driving the machine with the cargo bed raised could cause the machine to tip or roll easier. You could damage the structure of the cargo bed if you operate the machine with the bed raised.

- Operate the machine when the cargo bed is down.
- After emptying the cargo bed, lower it.

## **⚠ WARNING**

The weight of the bed may be heavy. Hands or other body parts could be crushed.

Keep your hands and other body parts clear when lowering the bed.

**Important:** When you hear a ratcheting sound, the bed lift is completely extended or retracted. Do not continue pressing the switch.

## Raising the Bed

1. Turn the key switch to the ON position.
2. Push the top of the switch to raise the bed.

## Lowering the Bed

Push the bottom of the switch to lower the bed.

**Note:** The actuator may cause slight deformation to the bed after it is fully lowered and before the actuator clutch engages. Release the switch when you hear a ratcheting noise.

# Declaration of Incorporation

Model No.	Serial No.	Product Description	Invoice Description	General Description	Directive
08389	—	Electric Bed Lift Kit, Workman MDX Lithium Utility Vehicle	ELECTRIC LIFT KIT, MDX LI	Utility Vehicle	2006/42/EC, 2000/14/EC

Relevant technical documentation has been compiled as required per Part B of Annex VII of 2006/42/EC.

We will undertake to transmit, in response to requests by national authorities, relevant information on this partly completed machinery. The method of transmission shall be electronic transmittal.

This machinery shall not be put into service until incorporated into approved Toro models as indicated on the associated Declaration of Conformity and in accordance with all instructions, whereby it can be declared in conformity with all relevant Directives.

Certified:



Tom Langworthy  
Engineering Director  
8111 Lyndale Ave. South  
Bloomington, MN 55420, USA  
December 11, 2023

Authorized Representative:

Marcel Dutrieux  
Manager European Product Integrity  
Toro Europe NV  
Nijverheidsstraat 5  
2260 Oevel  
Belgium

# UK Declaration of Incorporation

Model No.	Serial No.	Product Description	Invoice Description	General Description	Regulation
08389	—	Electric Bed Lift Kit, Workman MDX Lithium Utility Vehicle	ELECTRIC LIFT KIT, MDX LI	Utility Vehicle	S.I. 2008 No. 1597, S.I. 2001 No. 1701

Relevant technical documentation has been compiled as required per Schedule 10 of S.I. 2008 No. 1597.

We will undertake to transmit, in response to requests by national authorities, relevant information on this partly completed machinery. The method of transmission shall be electronic transmittal.

This machinery shall not be put into service until incorporated into approved Toro models as indicated on the associated Declaration of Conformity and in accordance with all instructions, whereby it can be declared in conformity with all relevant Directives.

This declaration has been issued under the sole responsibility of the manufacturer.  
The object of the declaration is in conformity with relevant UK legislation.



Tom Langworthy  
Engineering Director  
8111 Lyndale Ave. South  
Bloomington, MN 55420, USA  
December 11, 2023

Authorized Representative:

Marcel Dutrieux  
Manager European Product Integrity  
Toro U.K. Limited  
Spellbrook Lane West  
Bishop's Stortford  
CM23 4BU  
United Kingdom