



Form No. 3467-211 Rev A

Count on it.

Parts Catalog

Conveyor and Swivel Kit

ProPass-200 Top Dresser

Model No. 44703



Ordering Replacement Parts

To order replacement parts, please supply the part number, the quantity, and the description of each part desired.

Understanding Reference Numbers

Each identified part in an illustration has a reference number. The reference number for a part also appears in the parts list, along with other information about the part.

This catalog uses two special reference number formats, one to indicate parts in a service assembly and another to indicate the quantity of a given part in an illustration.

Service Assembly Reference Numbers

Parts in service assemblies have reference numbers in the form a:b. The a represents the reference number of the entire service assembly and the b represents a sequential number unique to each part within the service assembly.

For example, a wheel assembly might be identified by reference number 6, the tire by 6:1, the valve by 6:2, and the wheel by 6:3. When you order the assembly identified by reference number 6, you receive all parts identified by reference numbers 6:1, 6:2, and 6:3. However, you may also order any part individually. Reference numbers of this type appear in illustration and in parts lists.

Reference Numbers Indicating Quantity

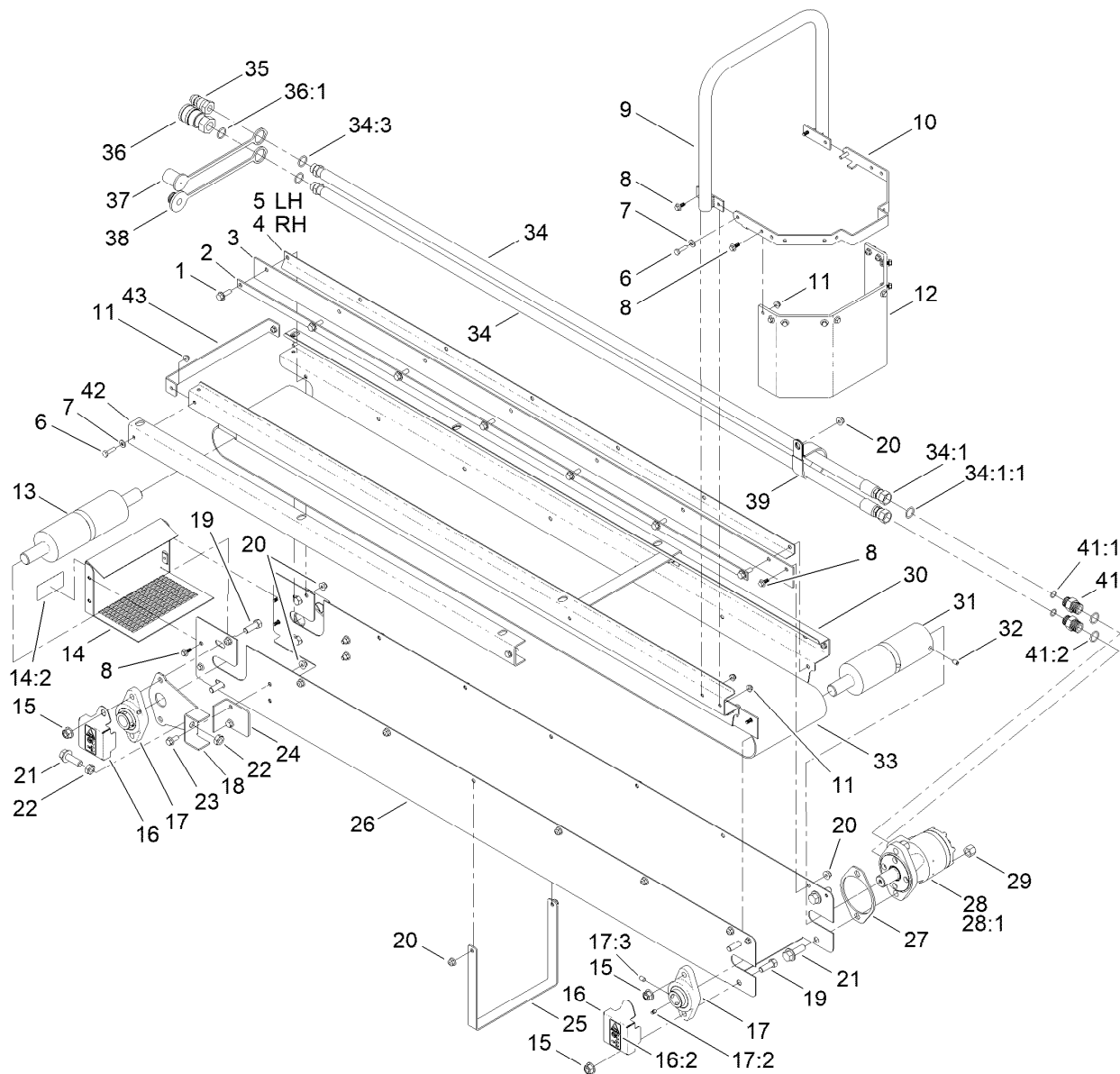
In an illustration, if a reference number indicates more than one part, the reference number has the form nX y. The n represents the quantity of the part, the X is the multiplication symbol, and the y represents the reference number.

For example, in an illustration, the reference number 2X 37 means that two of the parts identified by reference number 37 are indicated.

Contents

Cross Conveyor Assembly 4

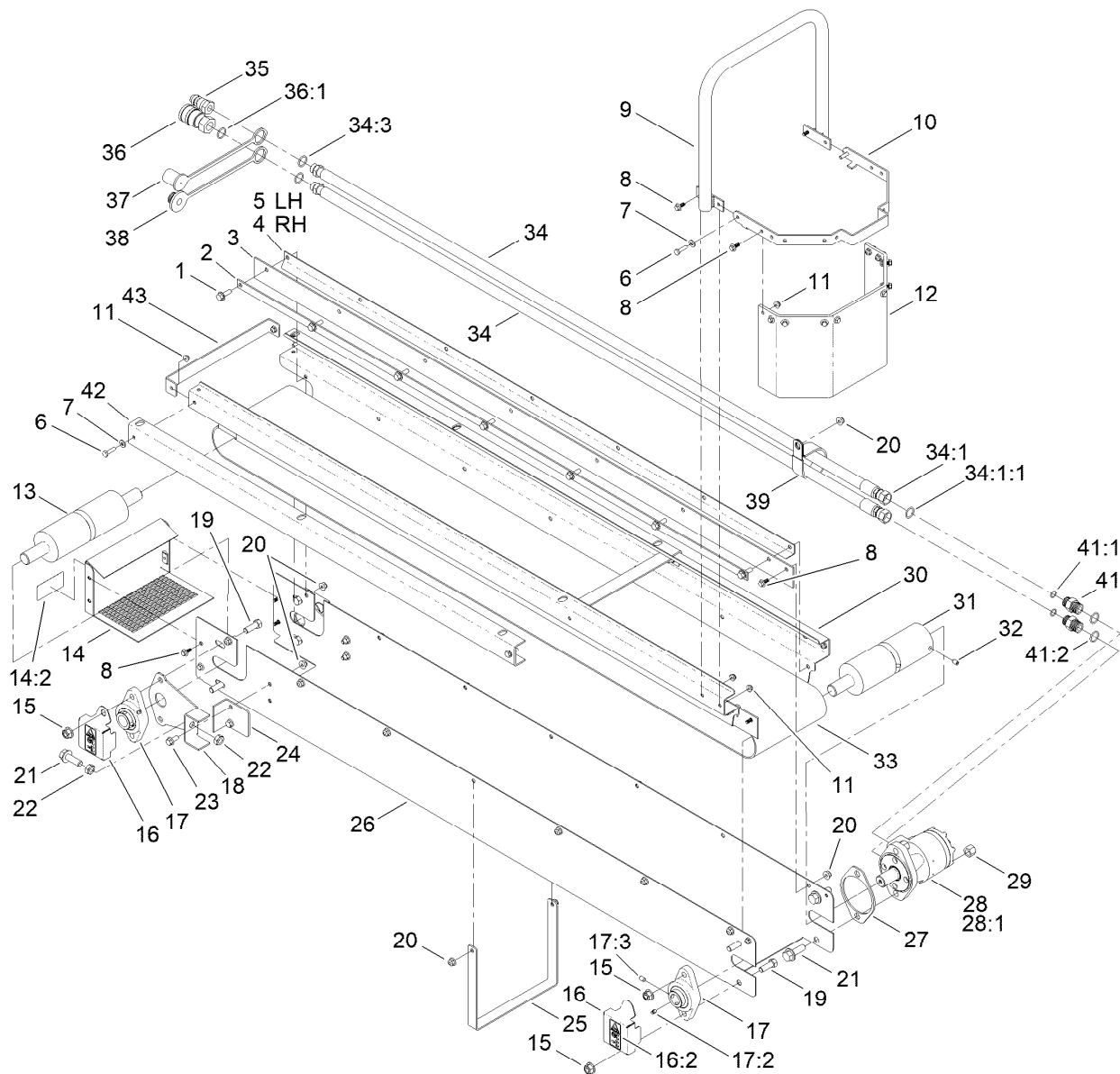
Swivel Assembly..... 6



Cross Conveyor Assembly

Ref.	Part Number	Qty.	Description	Ref.	Part Number	Qty.	Description
1	3234-29	14	Screw-HHF	16:2	119-6843	1	Decal-Warning, Entanglement
2	T36058025-01	2	Retainer-Seal	17	T60115160	3	2-Bolt Flange Bearing ASM
3	T0001-9897	2	Seal-Rubber	17:2	302-19	1	Fitting-Grease
4	T36058030-01	1	Backplate-RH	17:3	3246-17	1	Setscrew-HSH
5	T36058035-01	1	Backplate-LH	18	T36058055-01	2	Plate-Adjuster
6	321-6	6	Screw-HH	19	324-6	6	Screw-HH
7	3256-22	6	Washer-Flat	20	104-8300	18	Nut-HF, NI
8	99-6810	18	Screw-HHF	21	100-6116	4	Screw-HHF
9	T36058005-01	1	Handle	22	3218-5	4	Nut-Jam
10	T36058020-01	1	Strap-Deflector	23	3234-47	4	Screw-HHF
11	104-7201	20	Nut-HF, NI	24	T36058060-01	2	Stop-Adjuster
12	T36058015	1	Deflector-Rubber	25	T36058080-01	1	Bracket-Tending, Hose
13	T36058045	1	Roller-Idler	26	T36058135-01	1	Cover-Conveyor
14	119-6925	1	End Guard Decal ASM	27	T36058070-01	1	Plate-Spacer, Motor
14:2	119-6838	1	Decal-Warning, Conveyor	28	125-0118	1	Motor-Hydraulic
15	114-8417	6	Nut-HF, NI	28:1	120-9419	1	Kit-Seal
16	T36058065	3	Bearing Guard Decal ASM	29	3296-23	2	Nut-Lock, NI

● Not serviced separately

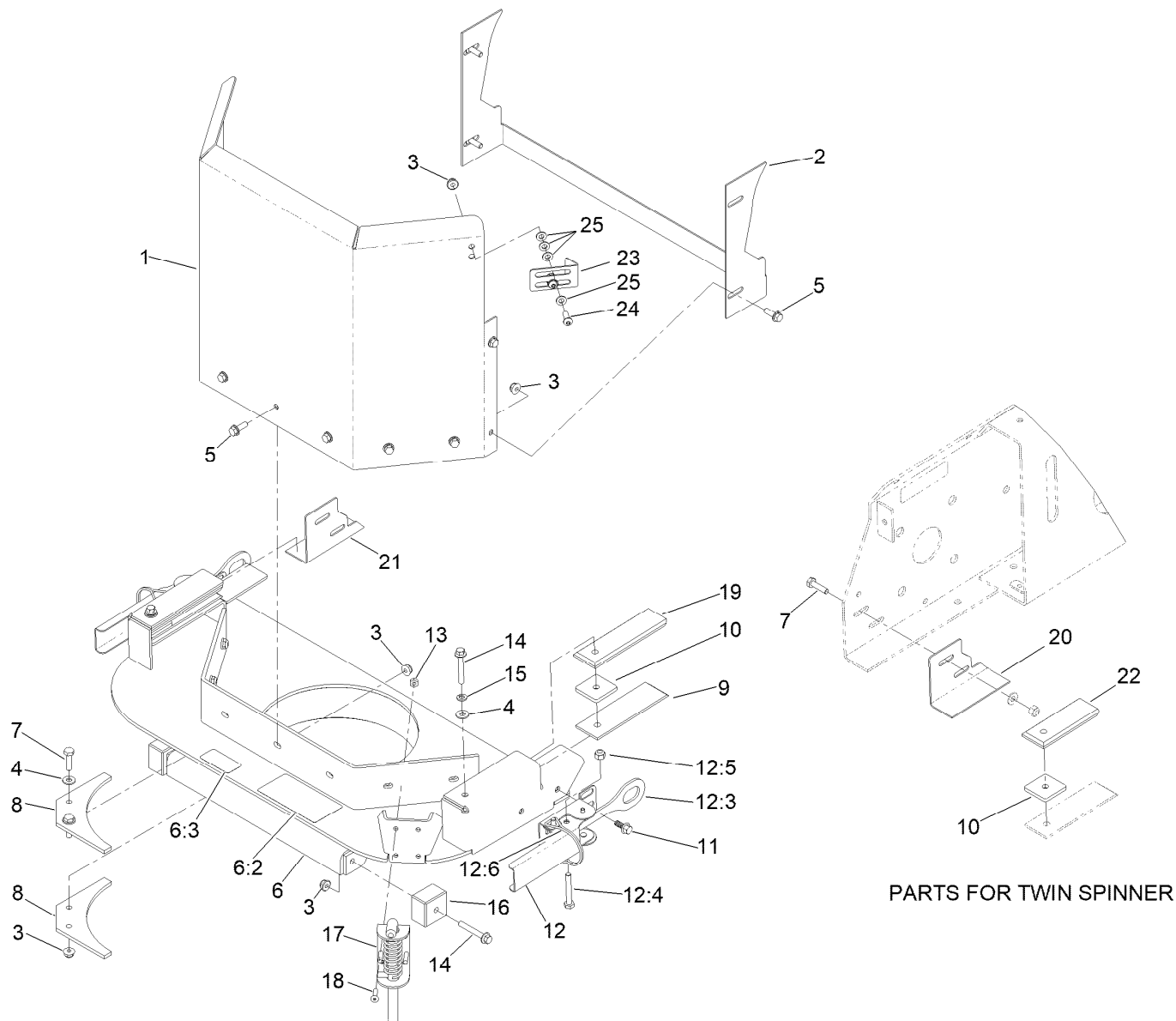


Cross Conveyor Assembly (continued)

Ref.	Part Number	Qty.	Description
30	T36058000-01	1	Pan-Belly, Conveyor
31	T0001-9199	1	Roller-Drive
32	3246-4	1	Screw-Set
33	T0001-9342	1	Belt-Pvc, 8 In (1-Ply)
34	120-0813	2	HYD Hose ASM
34:1		1	Fitting-Straight ●
34:1:1	237-79	1	O-Ring
34:3	237-79	1	O-Ring
35	98-4698	1	Male-Disconnect, Quick
36	98-4699	1	Female-Disconnect, Quick

Ref.	Part Number	Qty.	Description
36:1	100-4165	1	Seal Kit
37	T56152152	1	Cap-Connect, Quick
38	T56152150	1	Plug-Quick Connect
39	2412-102	1	Clamp-R
41	340-6	2	Fitting-Straight
41:1	237-30	1	O-Ring
41:2	237-80	1	O-Ring
42	T0003-0725-01	2	Channel-Doubler, Conveyor
43	T0003-0723-01	2	Brace-Conveyor

● Not serviced separately



PARTS FOR TWIN SPINNER

Swivel Assembly

Ref.	Part Number	Qty.	Description	Ref.	Part Number	Qty.	Description
1	145-7638-01	1	Guard-Swivel	12:5	3296-42	1	Nut-Lock, NI
2	T36058100-01	1	Guard-Sliding	12:6	100-1663	1	Pin-Hitch
3	104-7201	25	Nut-HF, NI	13	3296-2	4	Nut-Lock, NI
4	3256-22	10	Washer-Flat	14	32105-18	6	Screw-HHF
5	115-5103	11	Screw-HHF	15	3253-3	2	Washer-Lock
6	119-6926	1	Swivel Decal ASM	16	T36058105	4	Block-Swivel
6:2	119-6821	1	Decal-Cross Conveyor	17	T0001-3254	1	Latch Spring ASM
6:3	119-6810	1	Decal-Propass, Lift	18	119-6943	4	Screw-HSFH
7	321-6	12	Screw-HH	19	T36058115	2	Slide-Attachment, Upper
8	T36058090	8	Spacer-Swivel	20	T36058125-01	1	Doubler-Corner, Left
9	T36058110	2	Slide-Attachment, Lower	21	T36058130-01	1	Doubler-Corner, Right
10	T36058120	4	Spacer-Attachment	22	T0002-2016	2	Slide-Attachment, Twin Spinner
11	99-6810	4	Screw-HHF				
12	T36054750	2	Quick Attach Latch ASM	23	145-7634	1	Bracket-Sensor
12:3	T0002-1281-01	1	Hook ASM	24	3274-69	2	Screw-HSBH
12:4	321-10	1	Screw-HH	25	120-2886	8	Washer-Thrust

Notes:



Count on it.